

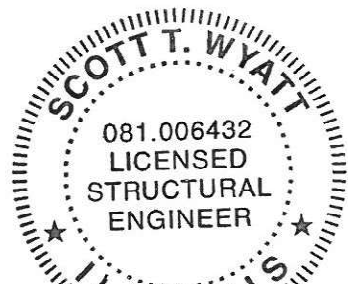
STATE OF ILLINOIS
DEPARTMENT OF TRANSPORTATION
**PROPOSED
HIGHWAY PLANS**

ROUTE FAI 39 (I-39/US 51)
SECTION (141-2HB-1)BDR
PROJECT NHPP-1JF3(913)
BRIDGE REHABILITATION
OGLE COUNTY, IL

F.A. RTE.	SECTION	COUNTY	TOTAL SHEETS	SHEET NO.
309	(17R-1VBR)BDR	WHITESIDE	22	1
		ILLINOIS	CONTRACT NO. 64P88	

INDEX OF SHEETS

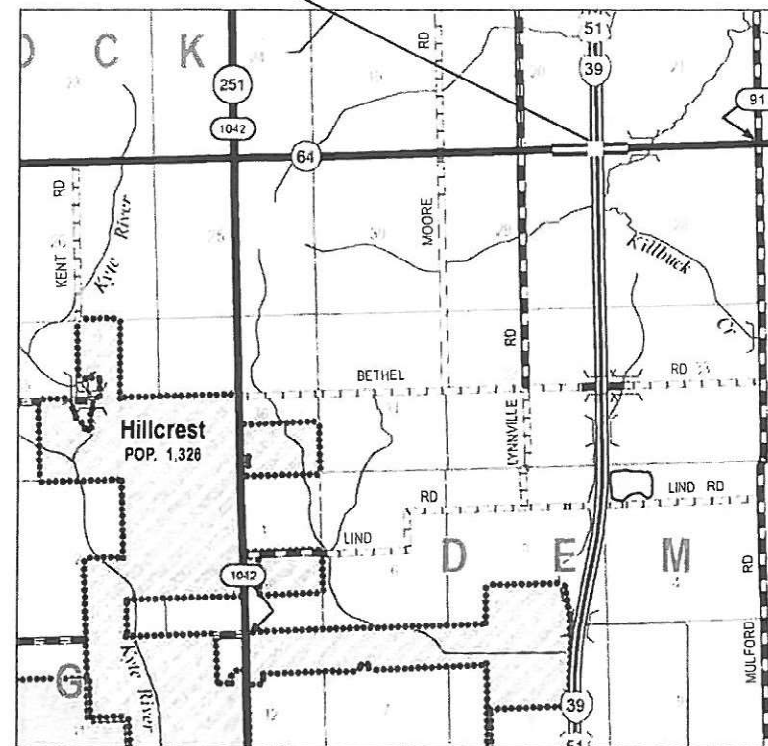
- 1 COVER SHEET
- 2 HIGHWAY STANDARDS AND GENERAL NOTES
- 3 - 4 SUMMARY OF QUANTITIES
- 5 - 12 MAINTINENCE OF TRAFFIC
- 13 GENERAL PLAN AND ELEVATION
- 14 TYPICAL SECTION
- 15 MEDIAN REPAIRS
- 16 JOINT REMOVAL DETAILS
- 17 JOINT REPLACEMENT DETAILS
- 18 JOINT SECTIONS
- 19 PREFORMED JOINT STRIP SEAL
- 20 BAR ASSEMBLY AND MECHANICAL SPLICER DETAILS
- 21 BARRIER REPAIRS
- 22 STEEL AND ABUTMENT REPAIRS



9/24/21
EXP. 11/30/21

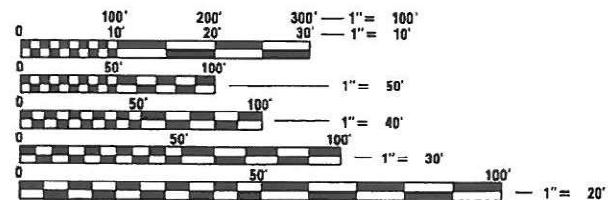
EXISTING STRUCTURE
SN 071-0055 A 2 SPAN STEEL BEAM
SUPERSTRUCTURE WITH CLOSED ABUTMENTS
AND MULTI COLUMN PIER.
BACK TO BACK LENGTH = 266'
OUT TO OUT WIDTH = 68'

C-92-035-21



LOCATION MAP

GROSS LENGTH = 265.83 FT. = 0.050 MILE
NET LENGTH = 265.83 FT. = 0.050 MILE



FULL SIZE PLANS HAVE BEEN PREPARED USING STANDARD
CONFORM TO STANDARD SCALES. IN MAKING MEASUREMENTS
ON REDUCED PLANS, THE ABOVE SCALES MAY BE USED.

J.U.L.I.E.
JOINT UTILITY LOCATION INFORMATION FOR EXCAVATION
1-800-892-0123
OR 811

PROJECT ENGINEER SCOTT WYATT, PE, SE
PROJECT MANAGER MAHMOUD ETEMADI, PE

CONTRACT NO. 64P88



exp 11/30/2021
Michael G. Buiting
For Maintenance of Traffic

STATE OF ILLINOIS
DEPARTMENT OF TRANSPORTATION
SUBMITTED October 17, 2021
[Signature]
REGIONAL ENGINEER
December 10, 2021
[Signature]
ENGINEER OF DESIGN AND ENVIRONMENT
December 10, 2021
[Signature]
DIRECTOR OF HIGHWAYS PROJECT IMPLEMENTATION 2

PRINTED BY THE AUTHORITY
OF THE STATE OF ILLINOIS

SUGGESTED MAINTENANCE OF TRAFFIC SEQUENCING

STATE HIGHWAY STANDARDS

000001-08	STANDARDS SYMBOLS, ABBREVIATIONS AND PATTERNS
001001-02	AREAS OF REINFORCEMENT BARS
001006	DECIMALS OF AN INCH AND OF A FOOT
482006-03	HMA SHOULDER ADJACENT TO RIGID PAVEMENT
606001-08	CONCRETE CURB TYPE B AND COMBINATION CURB AND GUTTER
606301-04	PC CONCRETE ISLANDS AND MEDIANS
701006-05	OFF-RD OPERATIONS, 2L, 2W, 15' TO 24" FROM PAVEMENT EDGE
701201-05	LANE CLOSURE, 2L, 2W, DAY ONLY, FOR SPEEDS > 45 MPH
701301-04	LANE CLOSURE, 2L, 2W, SHORT TIME OPERATIONS
701311-03	LANE CLOSURE, 2L, 2W, MOVING OPERATIONS-DAY ONLY
701326-04	LANE CLOSURE, 2L, 2W, FOR SPEEDS > 45 MPH
701331-05	LANE CLOSURE, 2L, 2W, WITH RUN-AROUND, FOR SPEEDS > 45 MPH
701901-08	TRAFFIC CONTROL DEVICES
780001-05	TYPICAL PAVEMENT MARKINGS
782006-01	GUARDRAIL AND BARRIER WALL REFLECTOR MOUNTING DETAILS

PRESTAGE

INSTALL CONSTRUCTION TRAFFIC CONTROL SIGNS, DRUMS AND BARRICADES FOR PRE-STAGE CONSTRUCTION. WITH THE EXCEPTION OF THE W6-3 (2-WAY TRAFFIC) SIGNS, PHYSICAL SIGN LOCATIONS DO NOT CHANGE DURING STAGE 1 AND STAGE 2 UNLESS OTHERWISE DIRECTED BY THE ENGINEER.

REMOVE MEDIAN CURB, GUTTER, AND ISLAND PAVEMENT.

MILL MEDIAN AND SHOULDERS, AND PLACE HOT-MIX ASPHALT SHOULDERS, 9".

COORDINATE WITH THE ENGINEER IF EXISTING GUARDRAIL NEEDS TO BE REMOVED TO FACILITATE SHOULDER CONSTRUCTION. AREAS WHERE GUARDRAIL IS REMOVED MUST BE PROTECTED IN ACCORDANCE WITH IDOT STANDARD TRAFFIC CONTROL AND PROTECTION MEASURES TO THE SATISFACTION OF THE ENGINEER. COST INCLUDED IN ITEMS "EXCAVATING AND GRADING EXISTING SHOULDER" AND "HOT-MIX ASPHALT SHOULDERS, 9"".

STAGE 1

REMOVE EXISTING PERMANENT PAVEMENT MARKINGS.

INSTALL PROTECTIVE PLATES OVER NORTH SIDE DECK DRAINS.

CHANGE TRAFFIC CONTROL SIGNS FOR STAGE 1 ROADWAY TRAVEL LANES.

INSTALL TEMPORARY PAVEMENT MARKINGS FOR STAGE 1 ROADWAY TRAVEL LANES.

INSTALL DRUM TAPERS AND BARRICADES FOR STAGE 1 ROADWAY TRAVEL LANES.

STAGE 2

CHANGE TRAFFIC CONTROL SIGNS FOR STAGE 2 ROADWAY TRAVEL LANES.

REMOVE STAGE 1 TEMPORARY PAVEMENT MARKINGS.

INSTALL PROTECTIVE PLATES OVER SOUTH SIDE DECK DRAINS.

MOVE DRUM TAPERS & BARRICADES TO STAGE 2 ROADWAY TRAVEL LANES.

INSTALL TEMPORARY PAVEMENT MARKINGS FOR STAGE 2 ROADWAY TRAVEL LANES.

POST STAGE

CHANGE CONSTRUCTION TRAFFIC CONTROL SIGNS, DRUMS AND BARRICADES FOR POST STAGE CONSTRUCTION.

CONSTRUCT CURB, GUTTER, AND ISLAND PAVEMENT.

REMOVE PROTECTIVE PLATES FROM DECK DRAINS.

REMOVE REMAINING STAGE 1 AND 2 TEMPORARY PAVEMENT MARKINGS.

INSTALL PERMANENT PAVEMENT MARKINGS.

REMOVE ALL REMAINING CONSTRUCTION SIGNS, BARRICADES, AND DRUMS.

HMA

Location and Mixture Use(s):	Shoulders	
	Surface	All Lower Lifts
Lift Thickness	2"	3.5' / 2 Lifts
PG	PG 58-28	PG 58-28
Design Air Voids	4.0 @ NG50	4.0 @ NG50
Mixture Composition (Gradation Mixture)	IL 8.5, or 9.5FG	IL 19.0
Friction Aggregate	D	N/A
Mix Weight	112	N/A
Quality Management Program	QC/QA	QC/QA
Sublot Size	N/A	N/A
Material Transfer Device	N/A	N/A

MAINTENANCE OF TRAFFIC GENERAL NOTES

- THE MAINTENANCE OF TRAFFIC CONTROL (MOT) PLANS SHALL SERVE AS A GUIDE FOR SAFE DIVERSION OF TRAFFIC DURING EXECUTION OF THIS CONTRACT. HOWEVER, THE CONTRACTOR MAY MODIFY THE MOT PLANS TO MEET CONSTRUCTION NEEDS, BUT NOT AT THE EXPENSE OF PUBLIC SAFETY OR CONVENIENCE. ANY CHANGES TO THE MOT PLANS SHALL BE SUBMITTED TO THE ENGINEER FOR APPROVAL.
- THE ENGINEER SHALL BE INFORMED 48 HOURS IN ADVANCE OF ANY PROPOSED CHANGE TO THE MOT PLANS.
- ALL EXISTING PAVEMENT MARKINGS IN CONFLICT WITH THE MAINTENANCE OF TRAFFIC STRIPING SHALL BE REMOVED TO THE LIMITS SHOWN IN THE PLANS.
- ALL TEMPORARY PAVEMENT MARKING WHICH CONFLICTS WITH THE NEXT STAGE OR FINAL STRIPING SHALL BE REMOVED TO THE LIMITS SPECIFIED IN THE PLANS AND IN THE SCHEDULES OF PAVEMENT MARKING.
- ALL TRAFFIC CONTROL DEVICES USED FOR THE MAINTENANCE OF TRAFFIC, AS DETAILED ON THE PLANS OR HIGHWAY STANDARD, SHALL BE REFLECTORIZED PRIOR TO INSTALLATION AND CLEANED AS SPECIFIED IN THE MAINTENANCE OF TRAFFIC SPECIAL PROVISIONS OR AS DIRECTED BY THE ENGINEER.
- ALL DRUMS, VERTICAL PANELS AND BARRICADES ADJACENT TO THE EDGE OF TRAVELED WAY SHALL BE EQUIPPED WITH BI-DIRECTIONAL STEADY-BURNING LIGHTS.
- ALL EXISTING SIGNS WITHIN MAINTENANCE OF TRAFFIC LIMITS WHICH ARE OBSCURED BY OR INTERFERE WITH CONSTRUCTION OPERATIONS AND MAINTENANCE OF TRAFFIC, SHALL BE COVERED OR REMOVED BY THE CONTRACTOR UNLESS SPECIFIED IN THE PLANS OR WHEN DIRECTED BY THE ENGINEER. THIS WORK SHALL BE IN ACCORDANCE WITH ARTICLE 107.25 OF THE IDOT STANDARD SPECIFICATIONS.
- A FULL DEPTH SAWCUT WILL BE REQUIRED BETWEEN PAVEMENT, CURB AND/OR GUTTER TO REMAIN AND PAVEMENT, CURB AND/OR GUTTER TO BE REMOVED PRIOR TO BEGINNING OF REMOVAL WORK. COST TO BE INCLUDED WITH APPLICABLE REMOVAL ITEMS.
- AS AN ADDITIONAL SOURCE OF INFORMATION IF NEEDED, ORIGINAL CONSTRUCTION SECTION NUMBER FOR STRUCTURE NUMBER 071-0055 IS 141-2HB-1.
- THE CONTRACTOR SHALL CONTACT THE IDOT DISTRICT 2 ENGINEER AT (815)284-2271 A MINIMUM OF 72 HOURS IN ADVANCE OF BEGINNING WORK.

PAY ITEMS FOR MAINTENANCE OF TRAFFIC WORK

ITEM "TRAFFIC CONTROL AND PROTECTION, STANDARD 701201" IS INTENDED FOR THE MATERIAL, EQUIPMENT AND LABOR NECESSARY FOR THE INSTALLATION, MAINTENANCE AND RELOCATION OF SIGNS, DRUMS, LIGHTS, PANELS, AND REFLECTORS NECESSARY TO MAINTAIN SAFE TRAFFIC FLOW DURING PRE-STAGE AND POST-STAGE CONSTRUCTION IN ACCORDANCE WITH IDOT STANDARD 701201.

ITEM "TRAFFIC CONTROL AND PROTECTION, STANDARD 701326" IS INTENDED FOR THE MATERIAL, EQUIPMENT AND LABOR NECESSARY TO MAINTAIN TRAFFIC CONTROL AND PROTECTION FOR PRE-STAGE AND POST-STAGE CONSTRUCTION DROP-OFF AND OPEN AREAS DURING TIMES WHEN CONTRACTOR IS NOT ENGAGING IN CONSTRUCTION OPERATIONS.

ITEM "TRAFFIC CONTROL SURVEILLANCE" IS INTENDED FOR THE MATERIAL, EQUIPMENT AND LABOR NECESSARY TO MAINTAIN TRAFFIC CONTROL AND PROTECTION FOR PRE-STAGE AND POST-STAGE CONSTRUCTION DROP-OFF AND OPEN AREAS DURING TIMES WHEN CONTRACTOR IS NOT ENGAGING IN CONSTRUCTION OPERATIONS.

ITEM "TRAFFIC CONTROL AND PROTECTION, STANDARD 701331" IS INTENDED FOR THE MATERIAL, EQUIPMENT AND LABOR NECESSARY FOR THE INSTALLATION, MAINTENANCE AND RELOCATION OF SIGNS, DRUMS, LIGHTS, PANELS, AND REFLECTORS NECESSARY TO MAINTAIN SAFE TRAFFIC FLOW DURING STAGED CONSTRUCTION IN ACCORDANCE WITH IDOT STANDARD 701331.

ITEM "PAVEMENT MARKING REMOVAL-WATER BLASTING" IS INTENDED FOR THE MATERIAL, EQUIPMENT AND LABOR NECESSARY TO REMOVE PERMANENT PAVEMENT MARKINGS AND TEMPORARY PAVEMENT MARKING TAPE TO THE LIMITS SPECIFIED IN THE PLANS.

ITEM "PAVEMENT MARKING TAPE" IS INTENDED FOR THE MATERIAL, EQUIPMENT AND LABOR NECESSARY TO PLACE AND MAINTAIN TEMPORARY PAVEMENT MARKING TAPE OF THE TYPE, SIZE AND LIMITS SPECIFIED IN THE PLANS, SPECIFICATIONS, AND IDOT STANDARD 780001.

ITEM "MODIFIED URETHANE PAVEMENT MARKING" IS INTENDED FOR THE MATERIAL, EQUIPMENT AND LABOR NECESSARY TO PLACE PERMANENT PAVEMENT MARKINGS OF THE TYPE AND TO THE LIMITS SPECIFIED IN THE PLANS, SPECIFICATIONS AND IDOT STANDARD 780001.

MODEL - Default FILE NAME - C:\p203\proj\hnt\004\100142_1\W04_S\01-0855\Submittals\10-11-21\2 2081-1-D-Plt-MOT NOTES.dgn

HAMILTON CONSULTING ENGINEERS, INC.
 3230 Executive Drive, Joliet, Illinois 60431
 Ph: (815) 730-3444 Fax: (815) 730-6703
 LICENSE NO. 184-002005
 © 2020 HAMILTON CONSULTING ENGINEERS, INC.

USER NAME = scottw	DESIGNED -	REVISED -
PLOT SCALE = 100.0000 /in.	DRAWN - DWS	REVISED -
PLOT DATE = 10/11/2021	CHECKED -	REVISED -
	DATE -	REVISED -

**STATE OF ILLINOIS
DEPARTMENT OF TRANSPORTATION**

**IL 64 CROSSING I-39 (EXIT 104)
GENERAL NOTES / CONSTRUCTION SEQUENCE**

SCALE: NONE SHEET OF SHEETS STA. TO STA.

F.A.I. RTE.	SECTION	COUNTY	TOTAL SHEETS	SHEET NO.
39	(141-2HB-1)BDR	OGLE		2
CONTRACT NO. 64P88				
ILLINOIS FED. AID PROJECT				

90% FED ZOE1
10% STATE 0047

90% FED ZOE1
10% STATE 0047

CODE NO.	ITEM	UNIT	TOTAL QUANTITY
20200600	EXCAVATING AND GRADING EXISTING SHOULDER	UNIT	25
44000500	COMBINATION CURB AND GUTTER REMOVAL	FOOT	1,326
44003100	MEDIAN REMOVAL	SQ FT	330
44003510	MEDIAN REMOVAL PARTIAL DEPTH	SQ FT	4502
44004250	PAVED SHOULDER REMOVAL	SQ YD	172
48203033	HOT-MIX ASPHALT SHOULDERS, 9"	SQ YD	2,507
50102400	CONCRETE REMOVAL	CU YD	11
50104000	BRIDGE RAIL REMOVAL	FOOT	526
50300300	PROTECTIVE COAT	SQ YD	1869
50800205	REINFORCING BARS EPOXY COATED	POUND	6406
50800515	BAR SPLICERS	EACH	32
50300255	CONCRETE SUPERSTRUCTURE	CU YD	65
52000110	PREFORMED JOINT STRIP SEAL	FOOT	137
60625600	ISLAND PAVEMENT (6")	SQ YD	37
60608700	COMB CONC C & G, TY M-6.06 (ABUTTING EXISTING PAVEMENT)	FOOT	1,326

CODE NO.	ITEM	UNIT	TOTAL QUANTITY
67000400	ENGINEER'S FIELD OFFICE, TYPE A	CAL MO	2
67100100	MOBILIZATION	L SUM	1
70100200	TRAFFIC CONTROL AND PROTECTION, STANDARD 701331	EACH	1
70100450	TRAFFIC CONTROL AND PROTECTION, STANDARD 701201	L SUM	1
70100500	TRAFFIC CONTROL AND PROTECTION, STANDARD 701326	L SUM	1
70103815	TRAFFIC CONTROL SURVEILLANCE	CAL DA	14
70307120	TEMPORARY PAVEMENT MARKING - LINE 4" - TYPE IV TAPE	FOOT	11,176
* 78000100	MODIFIED URETHANE PAVEMENT MARKING - LETTERS AND SYMBOLS	SQ FT	94
* 78000200	THERMOPLASTIC PAVEMENT MARKING - LINE 4",	FOOT	6,482
* X0326961	REMOVAL AND DISPOSAL OF LEAD BASED PAINT	L SUM	1
78300202	PAVEMENT MARKING REMOVAL - WATER BLASTING	SQ FT	1,459
X5030250	BRIDGE DECK GROOVING (LONGITUDINAL)	SQ YD	1,048
X7030005	TEMPORARY PAVEMENT MARKING REMOVAL	SQ FT	3,832
* Z0007101	CONTAINMENT AND DISPOSAL OF LEAD PAINT CLEANING RESIDUES NO, 1	L SUM	1
Z0010501	CLEANING AND PAINTING STEEL BRIDGE, No. 1	L SUM	1
Z0012142	BRIDGE DECK SCARIFICATION 2 1/4"	SQ YD	1368
Z0029090	DIAMOND GRINDING (BRIDGE SECTION)	SQ YD	1340

*= SPECIALTY ITEM

MODEL: Default
FILE NAME: \\kpf.com\ids\bridge\2100142\DOT_Work Order #4 SN 071-0055\02_Design (MS)\071-0055_03_Summary of Quantities SHt.1.dgn

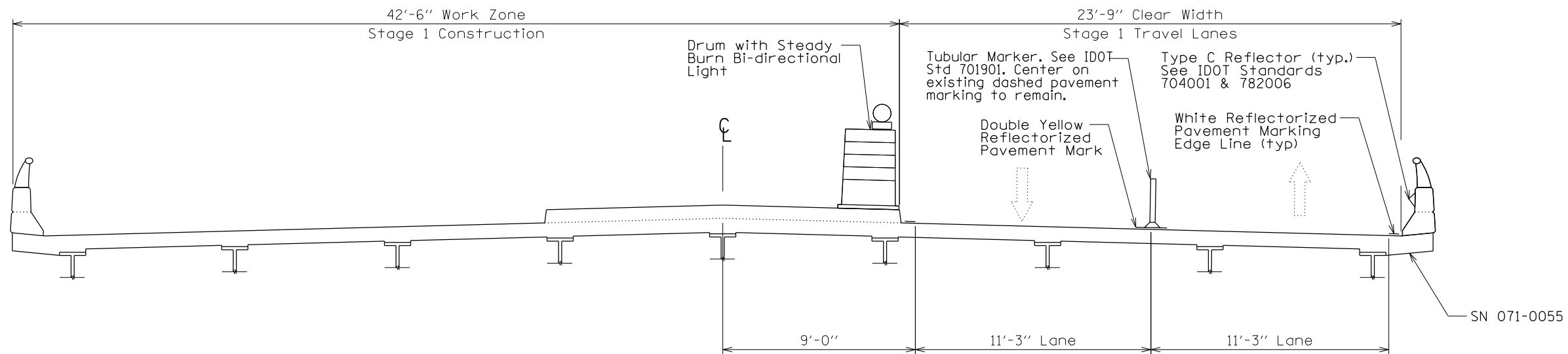


USER NAME =	DESIGNED -	REVISED -
	CHECKED -	REVISED -
PLOT SCALE =	DRAWN -	REVISED -
PLOT DATE =	CHECKED -	REVISED -

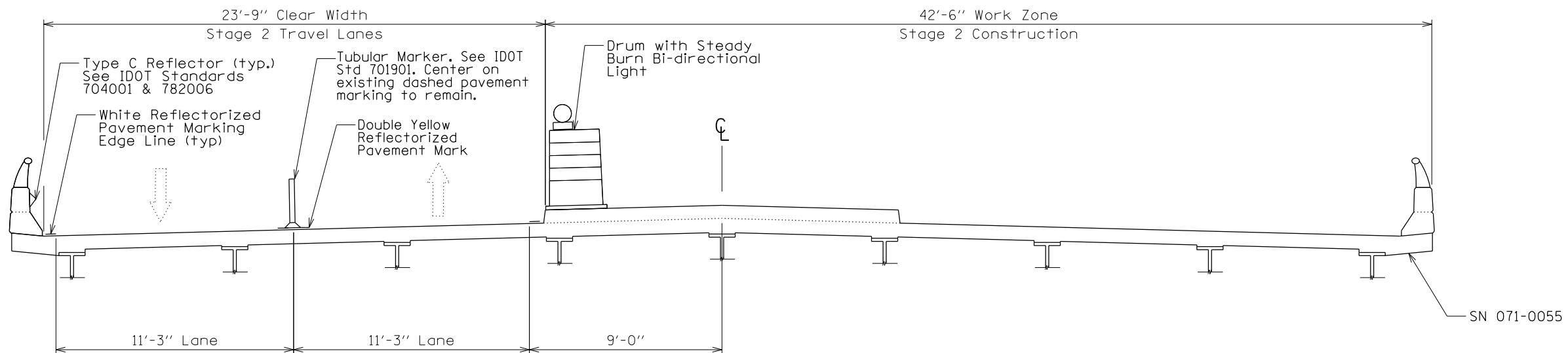
STATE OF ILLINOIS
DEPARTMENT OF TRANSPORTATION

SN 071-0055 IL 64 CROSSING I-39 (EXIT 104)
SUMMARY OF QUANTITIES

F.A. RTE.	SECTION	COUNTY	TOTAL SHEETS	SHEET NO.
39	(141-2HB-1)BD	OGLE	22	3
CONTRACT NO. 64P88				
(ILLINOIS) FED. AID PROJECT				



STAGE 1



STAGE 2

MODEL: D:\p1\h\...
 FILE NAME: E:\projects\Miscellaneous\20911-1\CAD\1-39_Exit_104_MOTIS_20911-1D-91-MOT-SEC.dwg
 3230 Executive Drive, Joliet, Illinois 60431
 Ph: (815) 730-3444 Fax: (815) 730-6703
 LICENSE NO. 184-003005
 © 2020 HAMILTON CONSULTING ENGINEERS, INC.

HAMILTON CONSULTING ENGINEERS, INC.

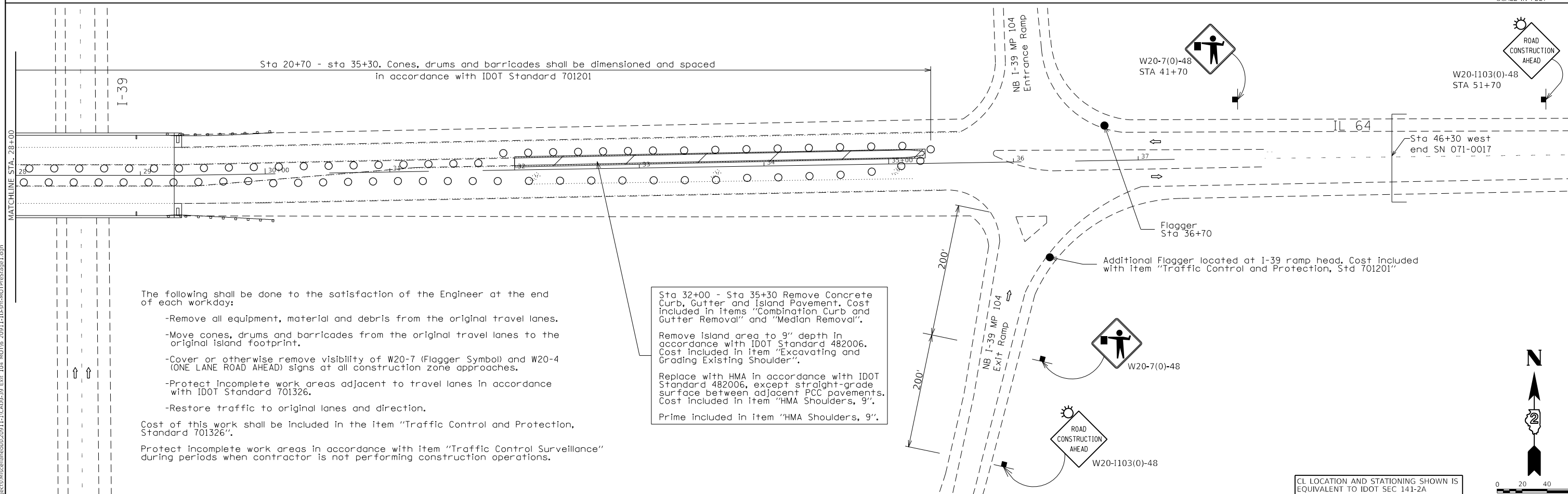
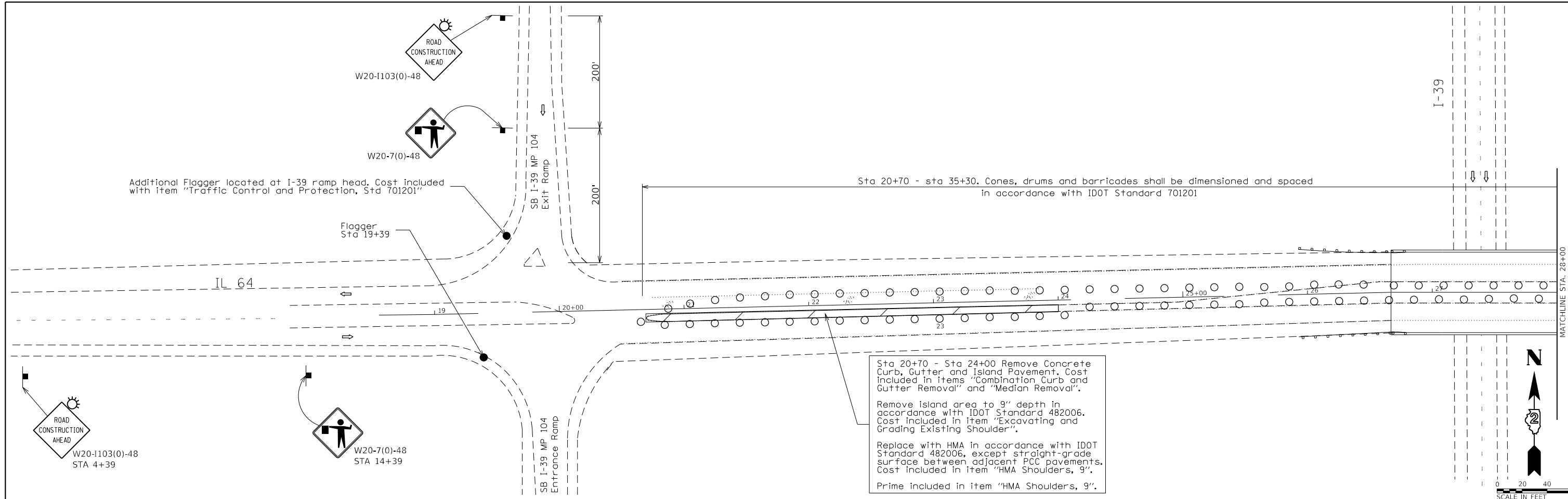
USER NAME = mibulding	DESIGNED - MGB	REVISED -
	DRAWN - MGB	REVISED -
PLOT SCALE = 600,0000' / in.	CHECKED -	REVISED -
PLOT DATE = 10/11/2021	DATE -	REVISED -

**STATE OF ILLINOIS
DEPARTMENT OF TRANSPORTATION**

**IL 64 CROSSING I-39 (EXIT 104)
STAGING TYPICAL SECTION**

SCALE: NTS SHEET 4 OF SHEETS STA. TO STA.

F.A.I. RTE.	SECTION	COUNTY	TOTAL SHEETS	SHEET NO.
39	(141-2HB-1)BDR	OGLE	22	5
CONTRACT NO. 64P88				
ILLINOIS FED. AID PROJECT				



The following shall be done to the satisfaction of the Engineer at the end of each workday:

- Remove all equipment, material and debris from the original travel lanes.
- Move cones, drums and barricades from the original travel lanes to the original island footprint.
- Cover or otherwise remove visibility of W20-7 (Flagger Symbol) and W20-4 (ONE LANE ROAD AHEAD) signs at all construction zone approaches.
- Protect incomplete work areas adjacent to travel lanes in accordance with IDOT Standard 701326.
- Restore traffic to original lanes and direction.

Cost of this work shall be included in the item "Traffic Control and Protection, Standard 701326".

Protect incomplete work areas in accordance with item "Traffic Control Surveillance" during periods when contractor is not performing construction operations.

Sta 32+00 - Sta 35+30 Remove Concrete Curb, Gutter and Island Pavement. Cost included in items "Combination Curb and Gutter Removal" and "Median Removal".

Remove island area to 9" depth in accordance with IDOT Standard 482006. Cost included in item "Excavating and Grading Existing Shoulder".

Replace with HMA in accordance with IDOT Standard 482006, except straight-grade surface between adjacent PCC pavements. Cost included in item "HMA Shoulders, 9".

Prime included in item "HMA Shoulders, 9".

Sta 20+70 - Sta 24+00 Remove Concrete Curb, Gutter and Island Pavement. Cost included in items "Combination Curb and Gutter Removal" and "Median Removal".

Remove island area to 9" depth in accordance with IDOT Standard 482006. Cost included in item "Excavating and Grading Existing Shoulder".

Replace with HMA in accordance with IDOT Standard 482006, except straight-grade surface between adjacent PCC pavements. Cost included in item "HMA Shoulders, 9".

Prime included in item "HMA Shoulders, 9".

HAMILTON CONSULTING ENGINEERS, INC.
 3230 Executive Drive, Joliet, Illinois 60431
 Ph: (815) 730-3444 Fax: (815) 730-6703
 IL LICENSE NO. 184-003005
 © 2020 HAMILTON CONSULTING ENGINEERS, INC.

USER NAME = mibulitg	DESIGNED -	REVISED -
PLOT SCALE = 80.0000 ' / in.	DRAWN -	REVISED -
PLOT DATE = 10/11/2021	CHECKED -	REVISED -
	DATE -	REVISED -

STATE OF ILLINOIS
 DEPARTMENT OF TRANSPORTATION

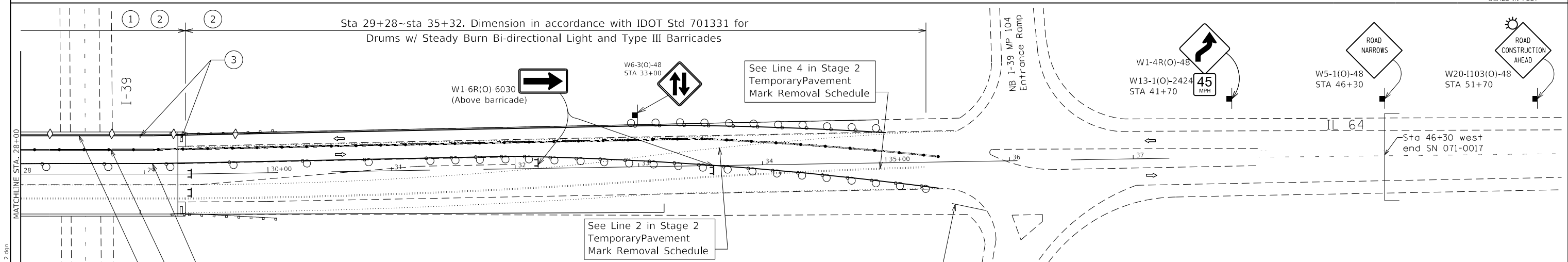
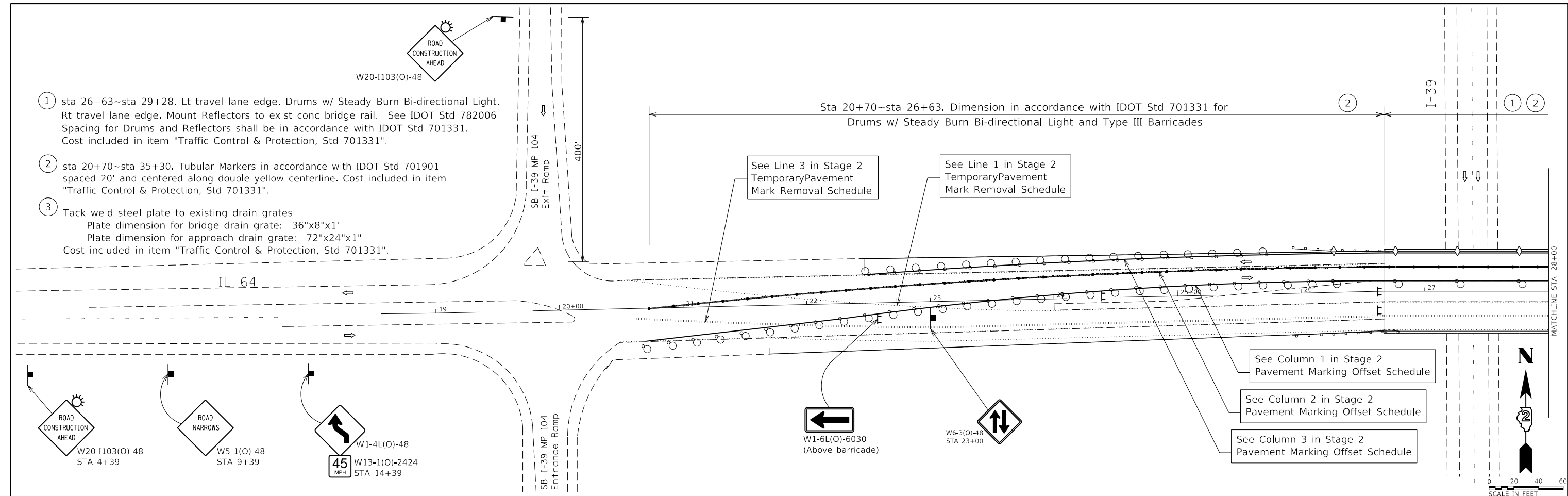
IL 64 CROSSING I-39 (EXIT 104)
 MAINTENANCE OF TRAFFIC PLAN PRE-STAGE PHASE 1 CONSTRUCTION

SCALE: SHEET OF SHEETS STA. TO STA.

F.A.I. RTE.	SECTION	COUNTY	TOTAL SHEETS	SHEET NO.
39	(141-2HB-1)BDR	OGLE	22	6
CONTRACT NO. 64P88				
ILLINOIS FED. AID PROJECT				

MODEL: D:\mft\p...
 FILE NAME: E:\projects\Miscellaneous\200111-1\CD\0139 Exit 104\NOTES_200111-1D-01-MOTR\Phase1.dwg
 PROJECT: Miscellaneous\200111-1\CD\0139 Exit 104\NOTES_200111-1D-01-MOTR\Phase1.dwg

- ① sta 26+63~sta 29+28. Lt travel lane edge. Drums w/ Steady Burn Bi-directional Light. Rt travel lane edge. Mount Reflectors to exist conc bridge rail. See IDOT Std 782006 Spacing for Drums and Reflectors shall be in accordance with IDOT Std 701331. Cost included in item "Traffic Control & Protection, Std 701331".
- ② sta 20+70~sta 35+30. Tubular Markers in accordance with IDOT Std 701901 spaced 20' and centered along double yellow centerline. Cost included in item "Traffic Control & Protection, Std 701331".
- ③ Tack weld steel plate to existing drain grates
Plate dimension for bridge drain grate: 36"x8"x1"
Plate dimension for approach drain grate: 72"x24"x1"
Cost included in item "Traffic Control & Protection, Std 701331".



Column	1	2	3	Column	1	2	3
Station	Right Edgeline	Centerline Dbl Yellow	Left Edgeline	Station	Right Edgeline	Centerline Dbl Yellow	Left Edgeline
20+70	22.5' rt	0.0' lt		29+28	9.0' lt	20.3' lt	31.6' lt
22+00	14.8' rt	9.0' lt		30+00	9.0' lt	20.3' lt	31.6' lt
22+46	10.2' rt	11.6' lt	22.5' lt	31+00	9.0' lt	20.3' lt	31.6' lt
23+00	4.7' rt	14.1' lt	25.4' lt	32+00	9.0' lt	20.3' lt	31.6' lt
24+00	3.2' lt	17.9' lt	29.2' lt	33+00	4.8' lt	20.3' lt	31.6' lt
25+00	7.9' lt	20.0' lt	31.3' lt	34+00	3.6' rt	18.5' lt	30.7' lt
26+00	9.0' lt	20.3' lt	31.6' lt	35+00	15.3' rt	8.9' lt	22.5' lt
26+63	9.0' lt	20.3' lt	31.6' lt	35+30	22.5' rt	4.3' lt	
28+00	9.0' lt	20.3' lt	31.6' lt				
TOTAL LENGTH				1462'	2920'	1254'	

Line	Description	Begin Station	End Station	Length	Area
1	Stage 1 Left Edge Line	20+70	23+50	280'	93 sf
2	Stage 1 Left Edge Line	32+50	35+30	280'	93 sf
3	Stage 1 Double Yellow CL	20+70	23+50	560'	187 sf
4	Stage 1 Double Yellow CL	34+00	35+30	260'	87 sf
TOTAL				1380'	460 sf

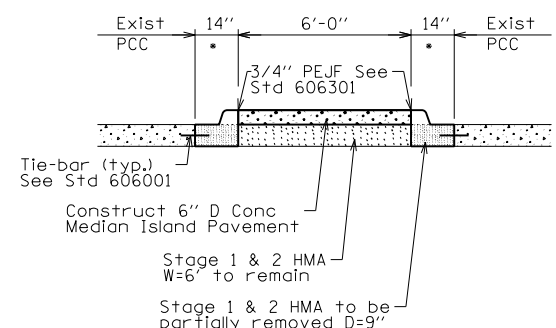
HAMILTON CONSULTING ENGINEERS, INC.
3230 Executive Drive, Joliet, Illinois 60431
Ph: (815) 730-3444 Fax: (815) 730-6703
E LICENSE NO. 184-003005
© 2020 HAMILTON CONSULTING ENGINEERS, INC.

USER NAME = mibulding	DESIGNED -	REVISED -
PLOT SCALE = 80.0000' / in.	DRAWN -	REVISED -
PLOT DATE = 10/11/2021	CHECKED -	REVISED -
	DATE -	REVISED -

STATE OF ILLINOIS DEPARTMENT OF TRANSPORTATION

IL 64 CROSSING I-39 (EXIT 104) MAINTENANCE OF TRAFFIC PLAN STAGE 2
SCALE: SHEET OF SHEETS STA. TO STA.

F.A.I. RTE. 39	SECTION (141-2HB-1)BDR	COUNTY OGLE	TOTAL SHEETS 22	SHEET NO. 10
ILLINOIS FED. AID PROJECT			CONTRACT NO. 64P88	



Construct 6" D Conc Median Island Pavement
 Stage 1 & 2 HMA W=6' to remain
 Stage 1 & 2 HMA to be partially removed D=9"

MEDIAN TYPICAL SECTION

Sta 20+70-24+00 and Sta 32+00-35+30

NOTE: Cost of PEJF and Tie-bars shall be included in Items "Island Pavement (6")" and "Combination Conc C & G, Ty M6.06"

•Combination Concrete Curb & Gutter Type M-6.06

Sta 20+70 - sta 35+30. Cones, drums and barricades shall be dimensioned and spaced in accordance with IDOT Standard 701201

Sta 20+70 - Sta 24+00 Place Median Pavement (6") adjacent to Comb C & G above remaining stage 1 and 2 HMA pavement in original island area. Construct to dimensions shown in original construction section 141-2A, and in accordance with IDOT Standard 606301. Cost included in item "Island Pavement (6)".

See Median Typical Section

Sta 20+70 - Sta 24+00 Remove existing 9" stage 1 and 2 HMA in original island area 14" wide x 9" deep adjacent to the existing PCC pavement. Cost included in item "Paved Shoulder Removal".

Place Concrete Curb and Gutter in original island area adjacent to existing PCC pavement to dimensions shown in original construction section 141-2A, and in accordance with IDOT Standard 606001. Cost included in item "Comb Conc Curb & Gutter, Type M-6.06 (Abutting Existing Pavement)".

See Median Typical Section.

Additional Flagger located at I-39 ramp head. Cost included with item "Traffic Control and Protection, Std 701201"

Sta 20+70 - sta 35+30. Cones, drums and barricades shall be dimensioned and spaced in accordance with IDOT Standard 701201

Sta 32+00 - Sta 35+30 Place Median Pavement (6") adjacent to Comb C & G above remaining stage 1 and 2 HMA pavement in original island area. Construct to dimensions shown in original construction section 141-2A, and in accordance with IDOT Standard 606301. Cost included in item "Island Pavement (6)".

See Median Typical Section

Sta 32+00 - Sta 35+30 Remove existing 9" stage 1 and 2 HMA in original island area 14" wide x 9" deep adjacent to the existing PCC pavement. Cost included in item "Paved Shoulder Removal".

Place Concrete Curb and Gutter in original island area adjacent to existing PCC pavement to dimensions shown in original construction section 141-2A, and in accordance with IDOT Standard 606001. Cost included in item "Comb Concrete Curb & Gutter, Type M-6.06 (Abut Exist Pavement)".

See Median Typical Section.

The following shall be done to the satisfaction of the Engineer at the end of each workday:

- Remove all equipment, material and debris from the original travel lanes.
- Move cones, drums and barricades from the original travel lanes to the original island footprint.
- Cover or otherwise remove visibility of W20-7 (Flagger Symbol) and W20-4 (ONE LANE ROAD AHEAD) signs at all construction zone approaches.
- Protect incomplete work areas adjacent to travel lanes in accordance with IDOT Standard 701326.
- Restore traffic to original lanes and direction.

Cost of this work shall be included in the item "Traffic Control and Protection, Standard 701201".

Protect incomplete work areas in accordance with item "Traffic Control Surveillance" during periods when contractor is not performing construction operations.

CL LOCATION AND STATIONING SHOWN IS EQUIVALENT TO IDOT SEC 141-2A

MODEL: D:\p\h\c\Projects\Miscellaneous\20911-1-1\CD\01-39_Exit_104_MOT11_20911-1-1D-ent-MOTPostStage.dgn

HAMILTON CONSULTING ENGINEERS, INC.
 3230 Executive Drive, Joliet, Illinois 60431
 Ph: (815) 730-3444 Fax: (815) 730-6703
 IL LICENSE NO. 184-003005
 © 2020 HAMILTON CONSULTING ENGINEERS, INC.

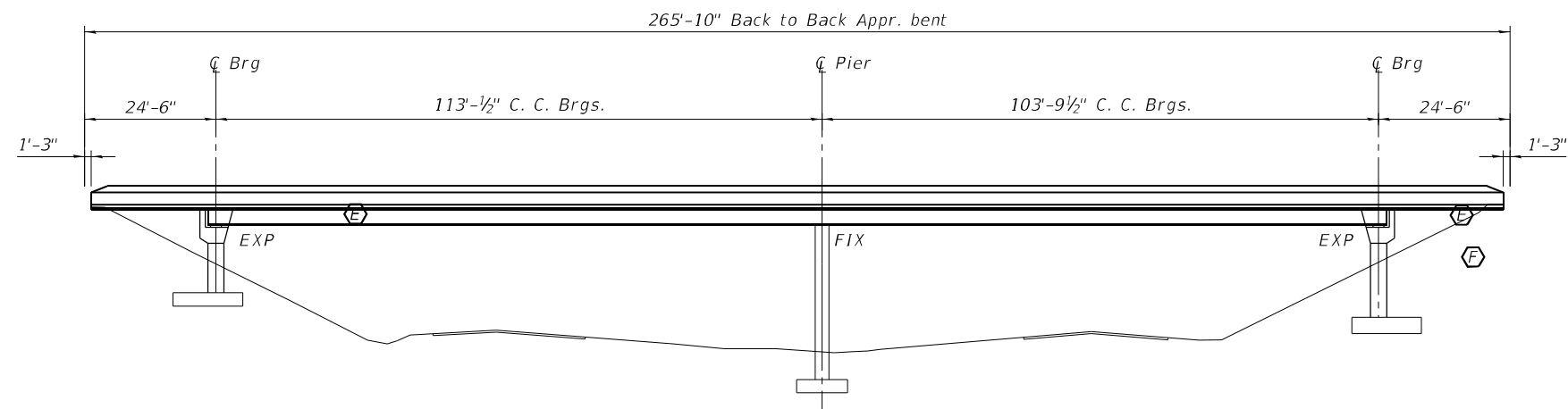
USER NAME = mibulitg	DESIGNED -	REVISED -
PLOT SCALE = 80.0000' / in.	DRAWN -	REVISED -
PLOT DATE = 10/11/2021	CHECKED -	REVISED -
	DATE -	REVISED -

STATE OF ILLINOIS DEPARTMENT OF TRANSPORTATION

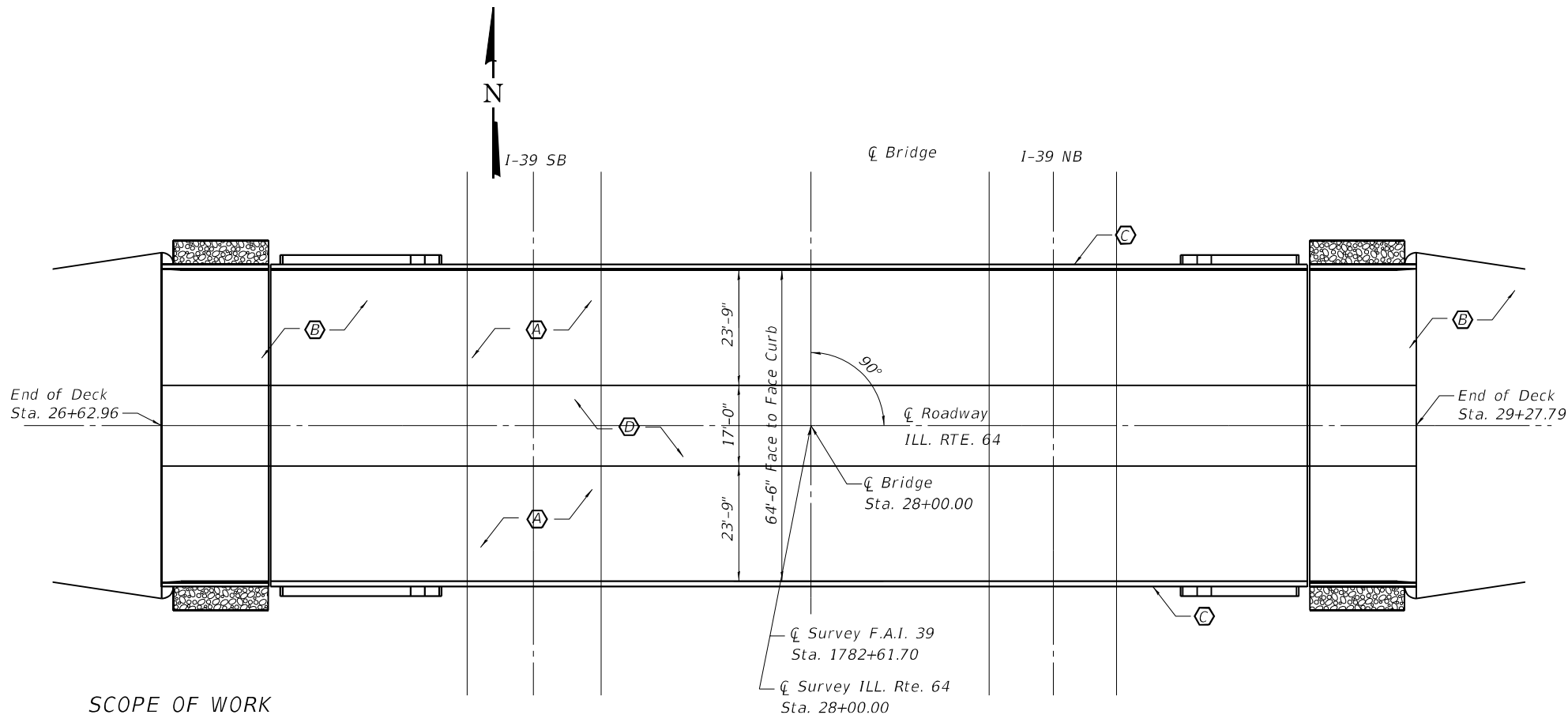
IL 64 CROSSING I-39 (EXIT 104) MAINTENANCE OF TRAFFIC PLAN POST-STAGE CONSTRUCTION

F.A.I. RTE.	SECTION	COUNTY	TOTAL SHEETS	SHEET NO.
39	(141-2HB-1)BDR	OGLE	22	11
CONTRACT NO. 64P88				
ILLINOIS FED. AID PROJECT				

SCALE: SHEET OF SHEETS STA. TO STA.



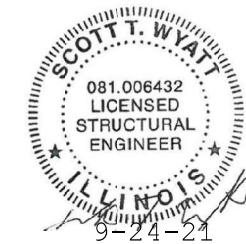
ELEVATION



PLAN

SCOPE OF WORK

- A Remove existing 2 1/4" microsilica concrete overlay, replace with 2 1/2" microsilica overlay, diamond grind 1/4".
- B Remove and replace Preformed Joint Strip Seals and Silicone Joint Seals at abutments.
- C Barrier rail improvements.
- D Median repairs
- E Clean and paint beam ends
- F Abutment repairs.



EXP 11-30-22

TOTAL BILL OF MATERIAL

ITEM	UNIT	TOTAL
Concrete Removal	Cu. Yd.	11
Concrete Superstructure	Cu. Yd.	65
Bridge Deck Microsilica Concrete Overlay 2 1/2"	Sq. Yd.	1368
Bridge Deck Scarification 2 1/4"	Sq. Yd.	1368
Silicone Joint Sealer 1"	Foot	136
Preformed Joint Strip Seal	Foot	136
Bar Splicers	Each	32
Polymer Concrete	Cu. Ft.	25
Reinforcement Bars, Epoxy Coated	Pound	6406
Cleaning and Painting Steel Bridge No. 1	L. Sum	1
Structural Repair of Concrete <= 5"	Sq. Ft.	262
Diamond Grinding (Bridge Section)	Sq. Yd.	1340
Bridge Deck Grooving (Longitudinal)	Sq. Yd.	1048
Containment and Disposal of Lead Paint Cleaning Residues, No. 1	L. Sum	1

The Structure Number shall remain SN 071-0055.

Plan dimensions and details relative to the existing plans are subject to nominal construction variations. The Contractor shall field verify existing dimensions and details affecting new construction and make necessary approved adjustments prior to construction or ordering materials. Such variations shall not be cause for additional compensation for a change in scope of the work, however, the Contractor will be paid for the quantity actually furnished at the unit price bid for the work.

Prior to pouring the new concrete overlay, all heavy or loose rust, loose mill scale, and other loose or potentially detrimental foreign material shall be removed from the surfaces in contact with concrete. Tightly adhered paint may remain unless otherwise noted. Removal shall be accomplished by methods that will not damage the steel and the cost will be included in the pay item covering removal of the existing concrete.

Reinforcement bars designated (E) shall be epoxy coated.

Existing reinforcement bars extending into the removal area shall be cleaned, straightened and incorporated into the new construction. Any reinforcement bars that are damaged during concrete removal shall be repaired with an approved bar splicer anchorage system. Cost included with Concrete Removal.

Joint openings shall be adjusted according to Article 520.04 of the Standard Specifications when the deck is poured at an ambient temperature other than 50° F.

Traffic will be maintained using temporary signalization.

The contact surfaces of the existing steel may contain lead. The Contractor shall take appropriate precautions for "Cleaning and Painting Existing Steel Structures"

Cleaning and painting existing steel shall be as specified in the Special Provision for "Cleaning and Painting Existing Steel Structures" as specified below:

Existing structural steel where shown on the plans shall be cleaned per the requirements of near white blast cleaning (SPPC-SP-10).

A minimum of one (1) high volume air monitors will be required to monitor air quality during dust producing operations. See special provisions.

The cleaned area of the structural steel shall be primed per the requirement of "paint system 1-0Z/E/U."

The final finish coat shall be "interstate green, munsell No. 7.5G 4/8."

The SSPC-QP1 and SSPC-QP2 certifications will be required for this project.

MODEL: Default
 FILE NAME: \\kpff.com\dis\Bridges\2100142 (IDOT Work Order #4 SN 071-0055)\02_Design (MS)\071-0055_13_Plan & Elevation.dgn
 12/7/2021 1:16:05 PM

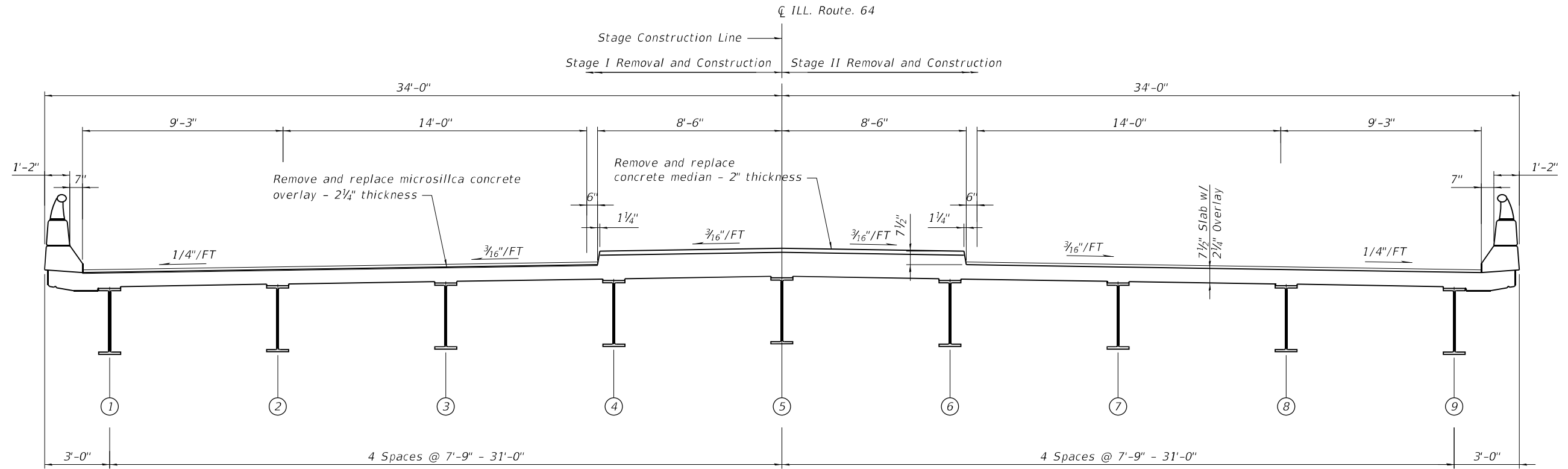


USER NAME =	DESIGNED -	REVISED -
PLOT SCALE =	CHECKED -	REVISED -
PLOT DATE =	DRAWN -	REVISED -
	CHECKED -	REVISED -

STATE OF ILLINOIS
 DEPARTMENT OF TRANSPORTATION

SN 071-0055 IL 64 CROSSING I-39 (EXIT 104)
 PLAN AND ELEVATION

F.A. RTE.	SECTION	COUNTY	TOTAL SHEETS	SHEET NO.
39	(141-2HB-1BD)	OGLE	22	13
CONTRACT NO. 64P88				
ILLINOIS FED. AID PROJECT				



DECK CROSS SECTION
(LOOKING EAST)

MODEL: Default
FILE NAME: \\kpf.com\dis\Bridges\2100142 (IDOT Work Order #4 SN 071-0055)\02_Design (MS)\071-0055_14_Typical Section.dgn

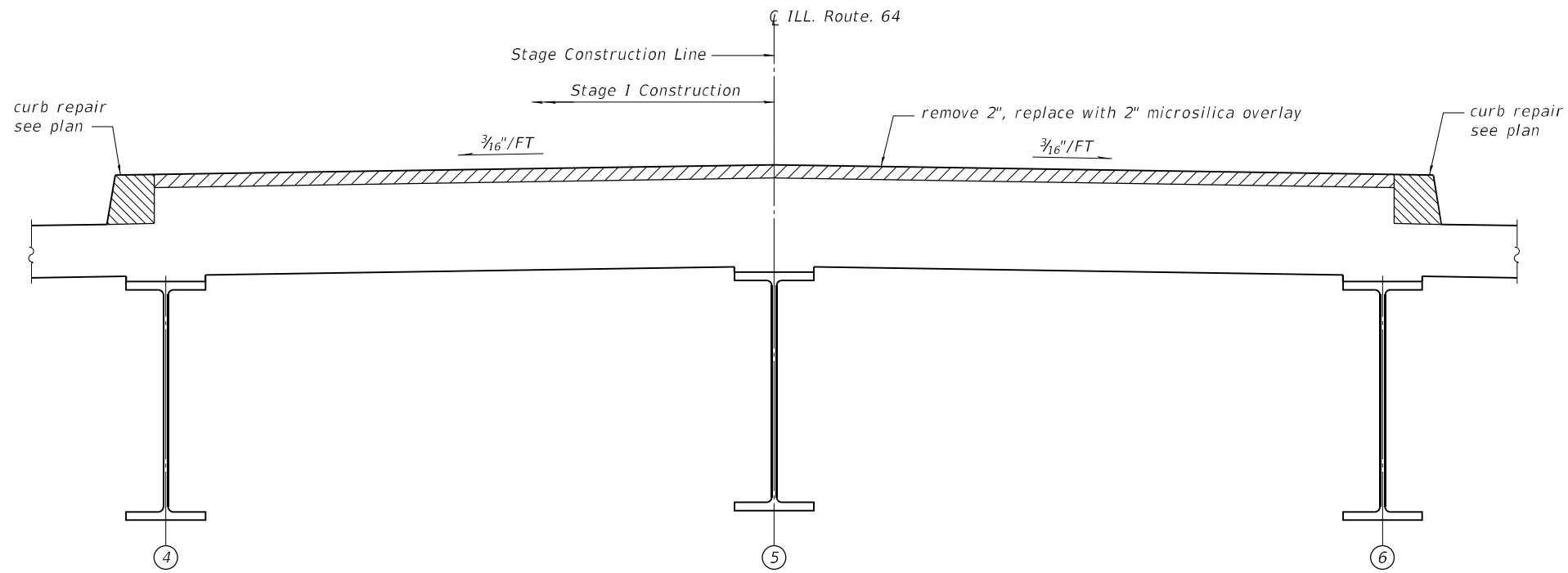
kpff
1500 Sherman Ave, Suite 1020
Evanston, IL 60201
847-859-7790
www.kpff.com

USER NAME =	DESIGNED -	REVISED -
PLOT SCALE =	CHECKED -	REVISED -
PLOT DATE =	DRAWN -	REVISED -
	CHECKED -	REVISED -

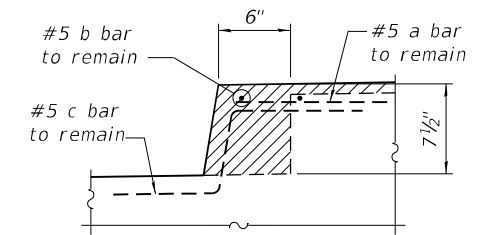
STATE OF ILLINOIS
DEPARTMENT OF TRANSPORTATION

SN 071-0055 IL 64 CROSSING I-39 (EXIT 104)
TYPICAL SECTION

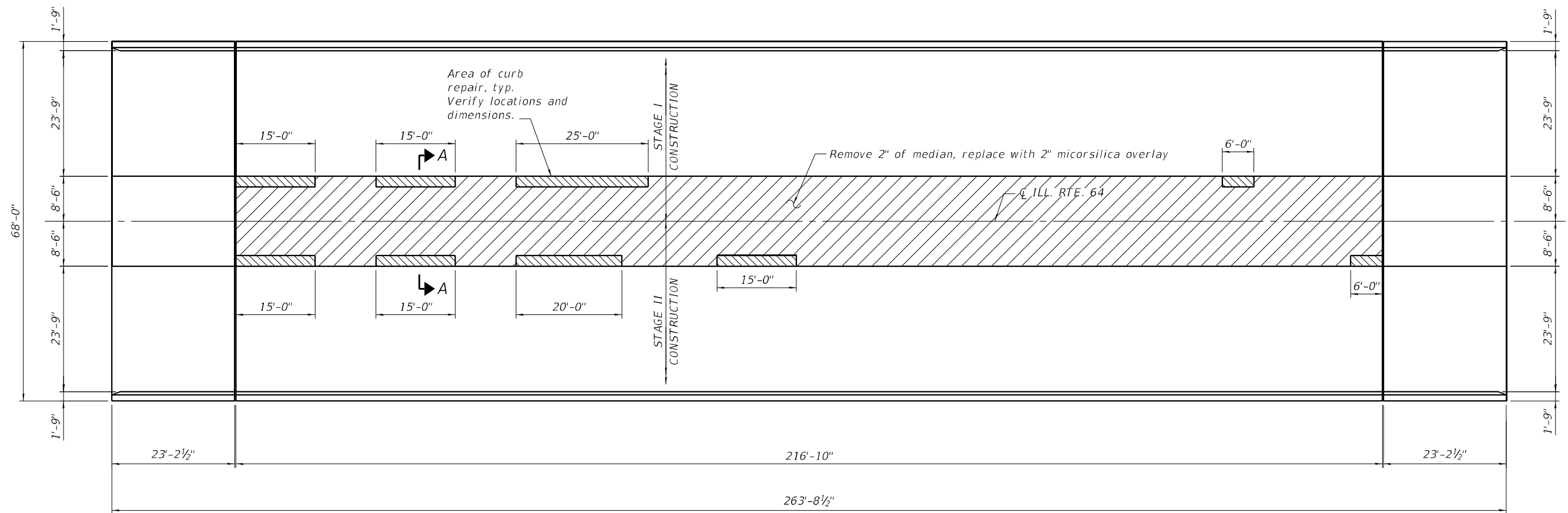
F.A. RTE.	SECTION	COUNTY	TOTAL SHEETS	SHEET NO.
39	(141-2HB-1BD)	OGLE	22	14
CONTRACT NO. 64P88				
ILLINOIS FED. AID PROJECT				



SECTION A-A



CURB REPAIR DETAIL



PLAN



MODEL: Default
 FILE NAME: \\kpf.com\dfs\Bridges\2100142 (IDOT Work Order #4 SN 071-0055)\02_Design (MS)\071-0055\15_Median Repairs.dgn

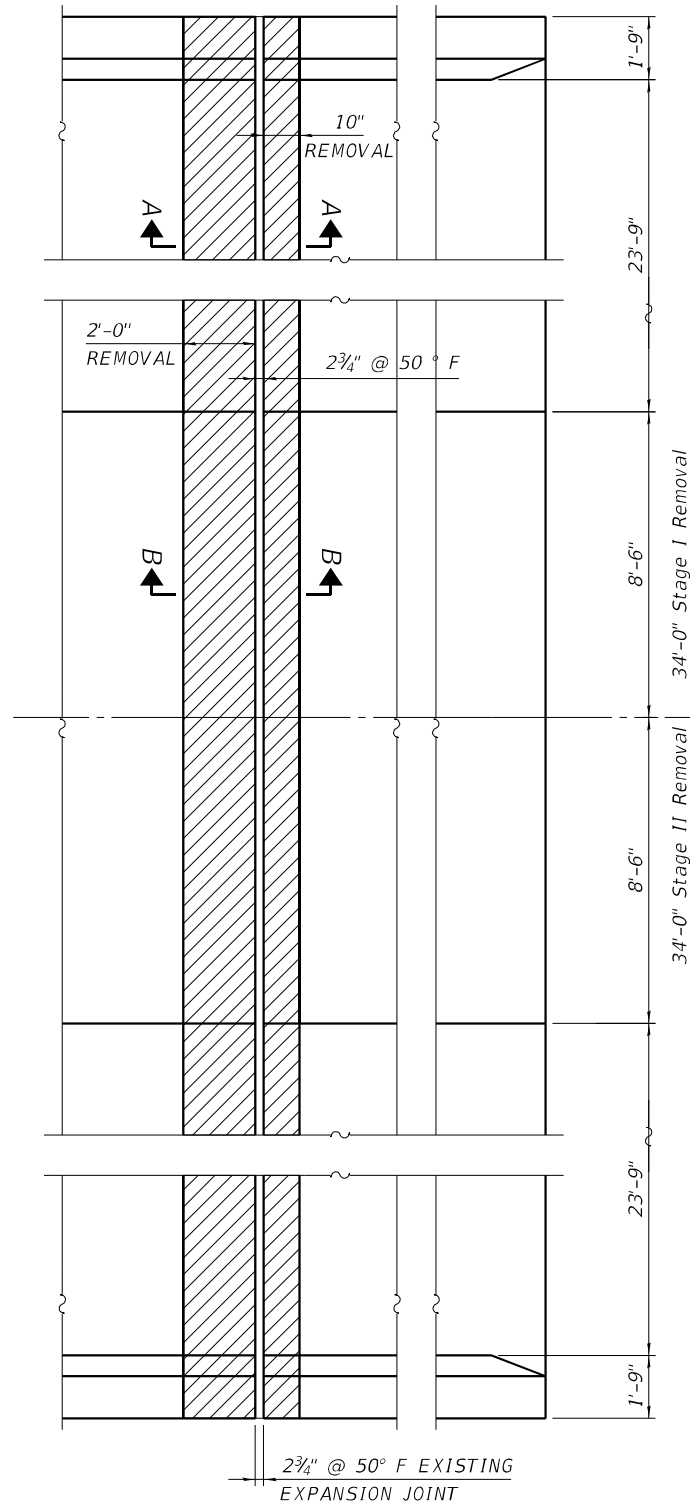
kpf
 1500 Sherman Ave, Suite 1020
 Evanston, IL 60001
 847-859-7790
 www.kpf.com

USER NAME =	DESIGNED -	REVISED -
PLOT SCALE =	CHECKED -	REVISED -
PLOT DATE =	DRAWN -	REVISED -
	CHECKED -	REVISED -

STATE OF ILLINOIS
 DEPARTMENT OF TRANSPORTATION

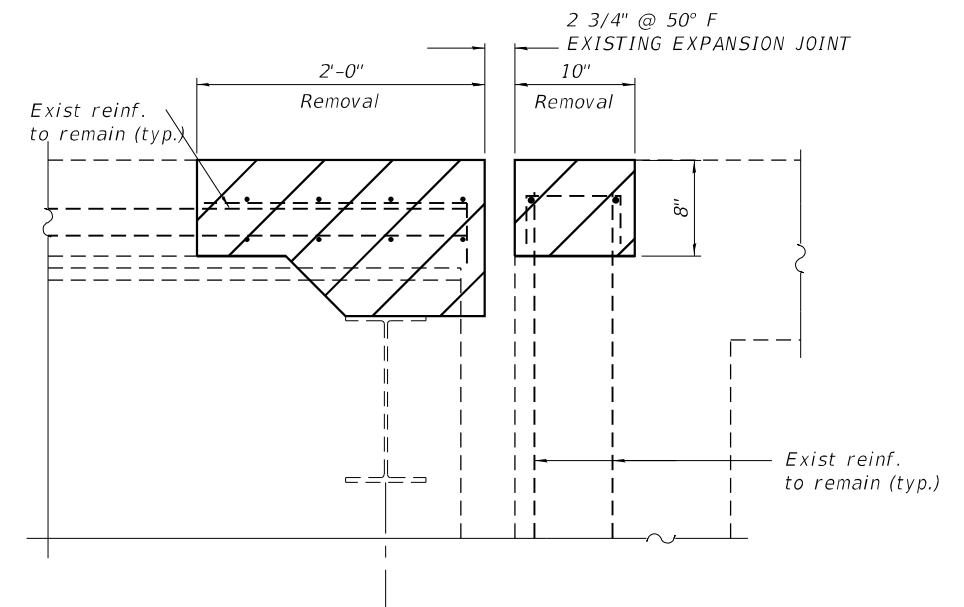
SN 071-0055 IL 64 CROSSING I-39 (EXIT 104)
 MEDIAN REPAIRS

F.A. RTE.	SECTION	COUNTY	TOTAL SHEETS	SHEET NO.
39	(141-2HB-1BD)	OGLE	22	15
CONTRACT NO. 64P88				
ILLINOIS FED. AID PROJECT				

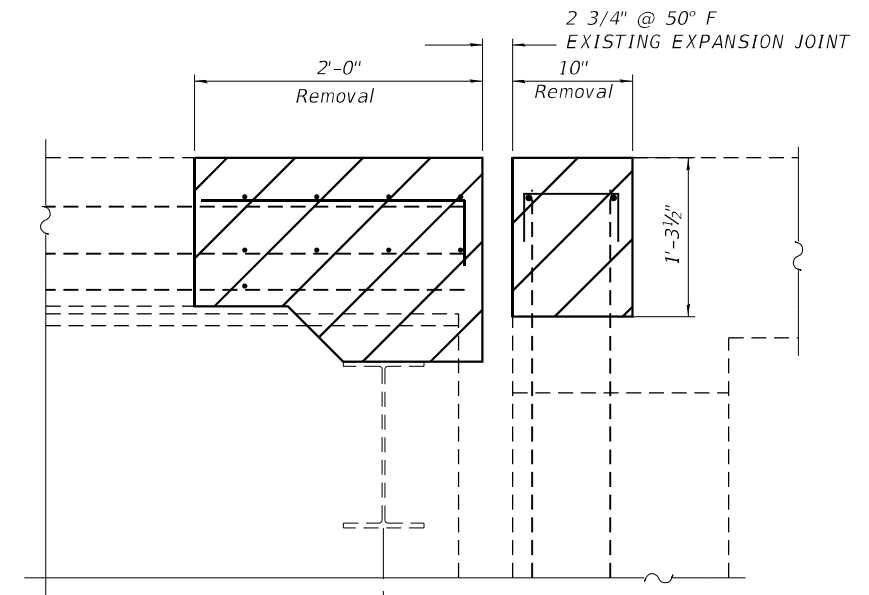


REMOVAL PLAN

E. ABUT.
W. ABUT. SIMILAR



SECTION A-A



ϕ Brg.

SECTION B-B

MODEL: Default
FILE NAME: \\kpf.com\dfs\Bridges\2100142 (DOT Work Order #4 SN 071-0055)\02_Design (MS)\071-0055_16_Joint Removal Details.dgn

kpff
1500 Sherman Ave, Suite 1020
Evanston, IL 60201
847-859-7790
www.kpff.com

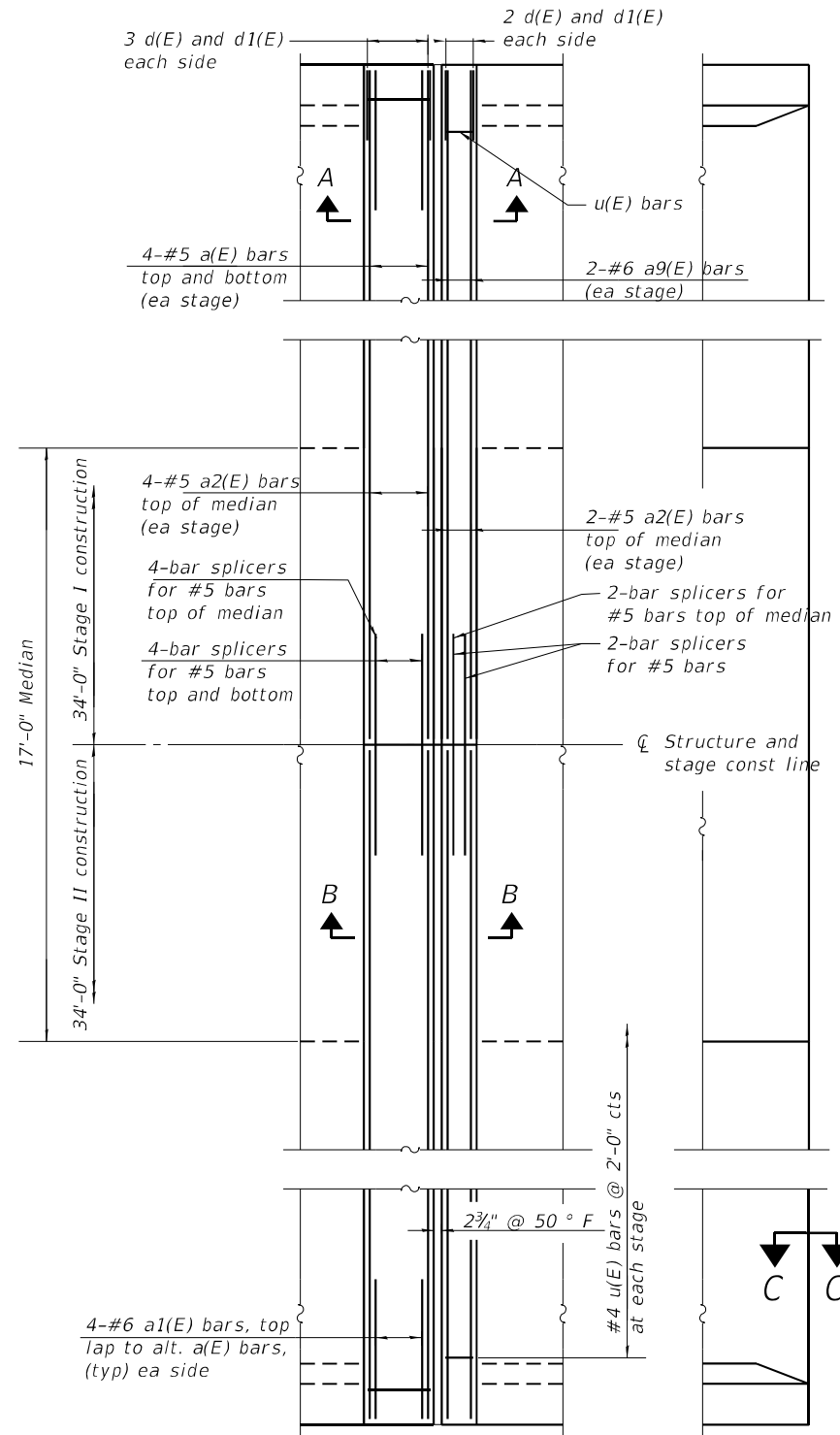
USER NAME =	DESIGNED -	REVISED -
PLOT SCALE =	CHECKED -	REVISED -
PLOT DATE =	DRAWN -	REVISED -
	CHECKED -	REVISED -

STATE OF ILLINOIS
DEPARTMENT OF TRANSPORTATION

SN 071-0055 IL 64 CROSSING I-39 (EXIT 104)
JOINT REMOVAL DETAILS

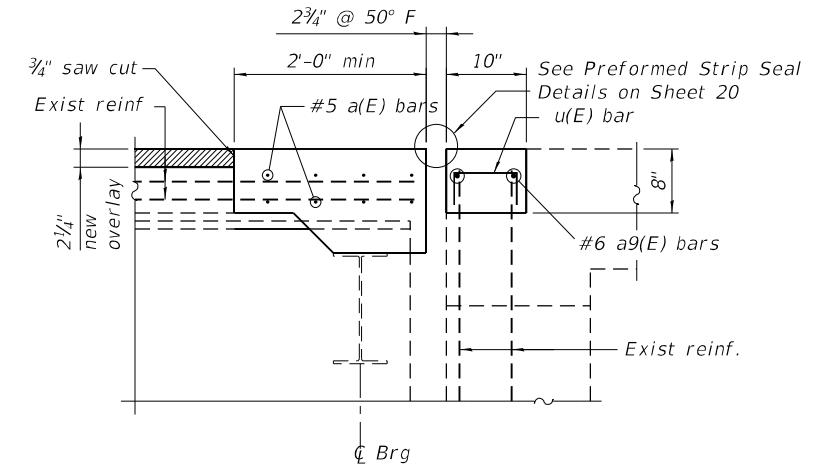
F.A. RTE.	SECTION	COUNTY	TOTAL SHEETS	SHEET NO.
39	(141-2HB-1BD)	OGLE	22	16
CONTRACT NO. 64P88				
ILLINOIS FED. AID PROJECT				

MODEL: Default
 FILE NAME: \\kpf.com\dis\Bridges\2100142 (IDOT Work Order #4 SN 071-0055)\02_Design (MS)\071-0055_17_Joint Replacement Details.dgn

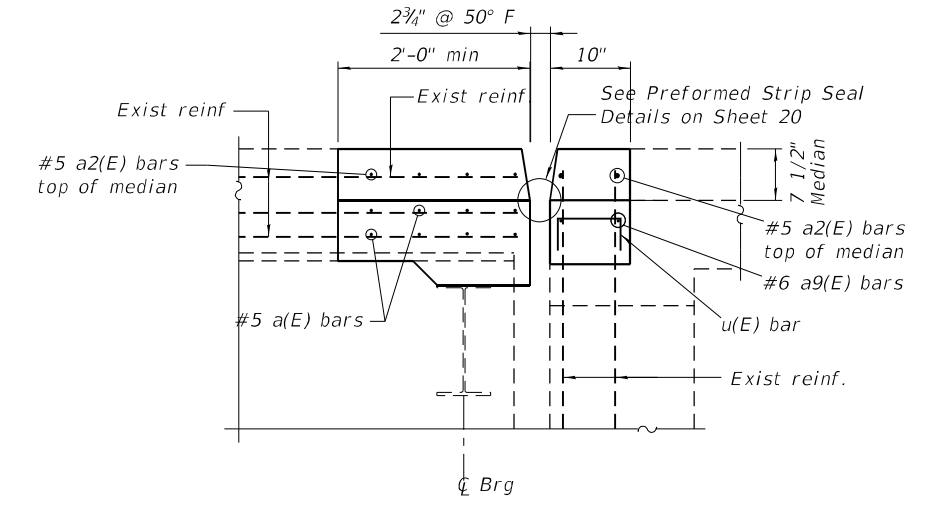


REPLACEMENT PLAN

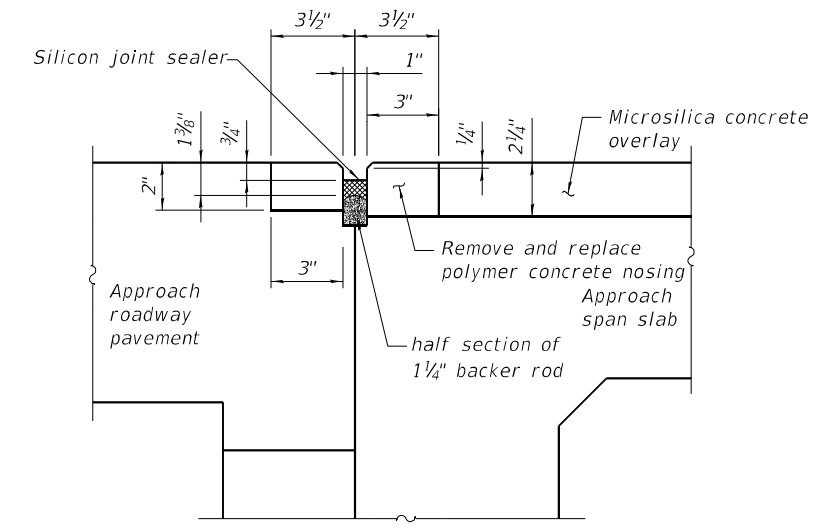
E. ABUT.
 (W. ABUT. SIMILAR)



SECTION A-A



SECTION B-B



SECTION C-C

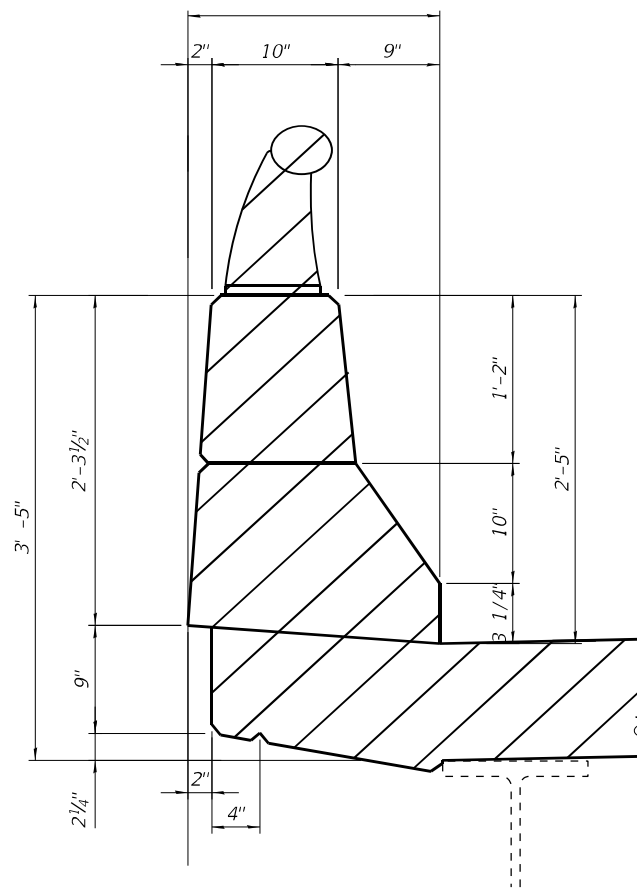
kpf
 1500 Sherman Ave, Suite 1020
 Evanston, IL 60201
 847-859-7790
 www.kpf.com

USER NAME =	DESIGNED -	REVISED -
PLOT SCALE =	CHECKED -	REVISED -
PLOT DATE =	DRAWN -	REVISED -
	CHECKED -	REVISED -

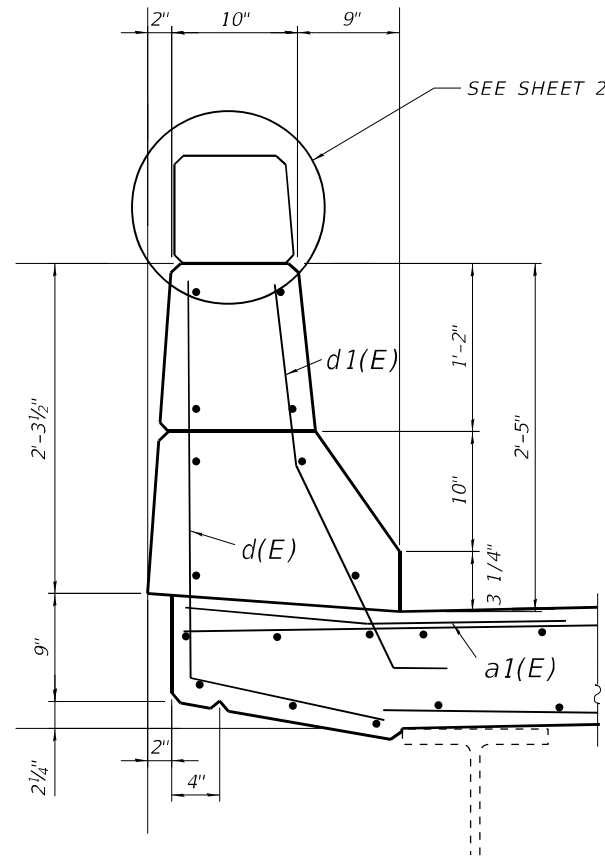
STATE OF ILLINOIS
 DEPARTMENT OF TRANSPORTATION

SN 071-0055 IL 64 CROSSING I-39 (EXIT 104)
 JOINT REPLACEMENT DETAILS

F.A. RTE.	SECTION	COUNTY	TOTAL SHEETS	SHEET NO.
39	(141-2HB-1BD)	OGLE	22	17
CONTRACT NO. 64P88				
ILLINOIS FED. AID PROJECT				



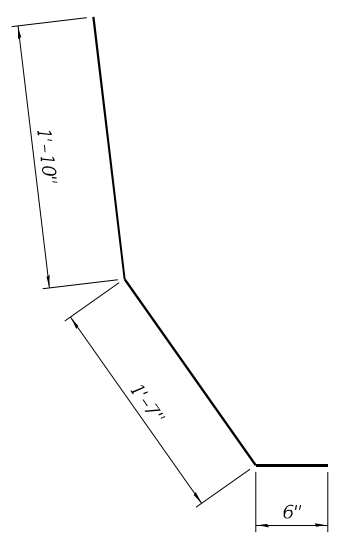
SECTION THOROUGH BRIDGE PARAPET



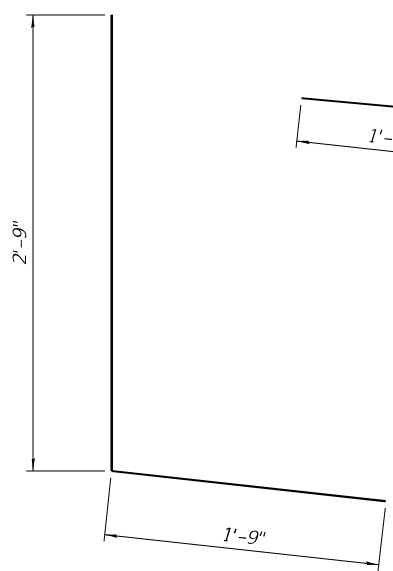
EXISTING BARRIER SECTION

BILL OF MATERIAL
(TWO ABUTMENTS AND BARRIERS)

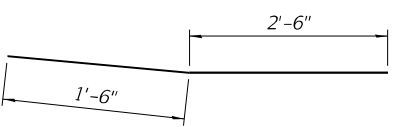
Bar	No.	Size	Length	Shape
a(E)	32	5	33'-6"	—
a1(E)	8	6	4'-0"	—
a2(E)	24	5	8'-2"	—
a3(E)	16	4	22'-10"	—
a4(E)	8	4	17'-10"	—
a5(E)	32	4	18'-5"	—
a6(E)	16	4	20'-1"	—
a7(E)	32	4	16'-5"	—
a8(E)	8	4	16'-7"	—
a9(E)	8	6	33'-6"	—
d(E)	20	4	5'-6"	L
d1(E)	20	5	3'-11"	L
v(E)	1064	5	1'-10"	L
u(E)	68	4	1'-7"	□
u1(E)	532	4	1'-7"	□
Concrete Removal			Cu. Yd	11
Concrete Superstructure			Cu. Yd	65
Bar Splicers			Each	26
Reinforcing Bars, Epoxy Coated			Pound	6406



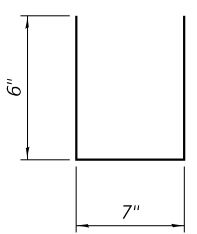
BAR d1(E)



BAR d(E)



BAR a1(E)



BAR u(E)

MODEL: Default
FILE NAME: \\kpff.com\dis\Bridges\2100142 (IDOT Work Order #4 SN 071-0055)\02_Design (MS)\071-0055_18_Joint Sections.dgn

kpff
1500 Sherman Ave, Suite 1020
Evanston, IL 60201
847-859-7790
www.kpff.com

USER NAME =	DESIGNED -	REVISED -
PLOT SCALE =	CHECKED -	REVISED -
PLOT DATE =	DRAWN -	REVISED -
	CHECKED -	REVISED -

STATE OF ILLINOIS
DEPARTMENT OF TRANSPORTATION

SN 071-0055 IL 64 CROSSING I-39 (EXIT 104)
JOINT SECTIONS AND DETAILS

F.A. RTE.	SECTION	COUNTY	TOTAL SHEETS	SHEET NO.
39	(141-2HB-1BD)	OGLE	22	18
CONTRACT NO. 64P88				
ILLINOIS FED. AID PROJECT				

Notes:

The strip seal shall be made continuous and shall have a minimum thickness of 1/4". The configuration of the strip seal shall match the configuration of the locking edge rails. Open or "webbed" strip seal gland configurations are not permitted. The gland shall be sized for a maximum rated movement of 4 inches.

The locking edge rails depicted are configured for typical applications and are conceptual only. The actual configuration of the locking edge rails and matching strip seal may vary from manufacturer to manufacturer provided they fit the application and meet the minimum anchorage shown. Flanged edge rails, however, will not be allowed. Locking edge rails may exceed the 4 1/2" maximum depth provided the anchorage system is revised according to the manufacturer's recommendation.

The manufacturer's recommended installation methods shall be followed.

All steel components shall be galvanized after fabrication according to Article 520.03 of the Standard Specifications.

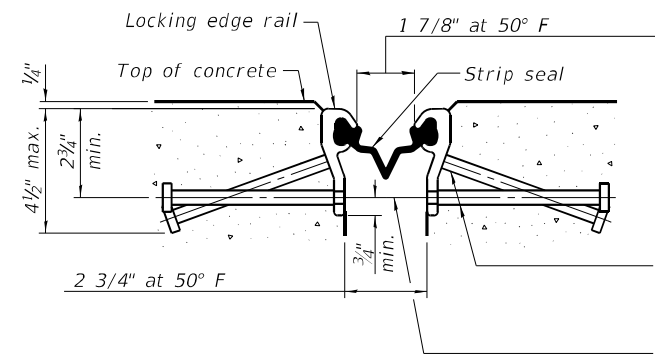
The Maximum space between locking edge rail segments shall be 3/16" and sealed with a suitable sealant; however, any rail joint within 10' measured perpendicular to the face of the curb or parapet shall be welded as shown in the locking edge rail splice detail.

The top surface of sidewalk sliding plates shall have a raised pattern according to ASTM A786.

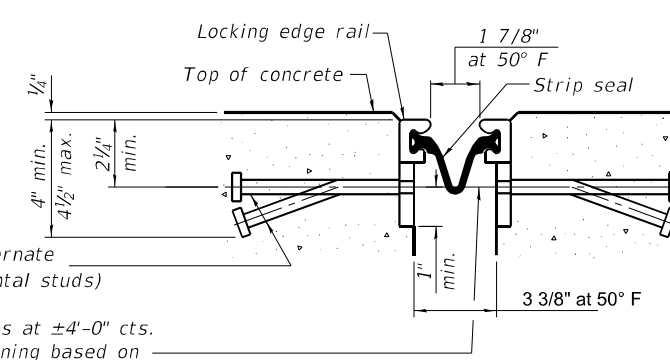
Cost of parapet sliding plates, sidewalk sliding plates, embedded plates, anchorage studs, and expansion anchors included with Preformed Joint Strip Seal.

39" constant slope barrier shown, 44" constant slope barrier similar as noted.

The concrete opening below the strip seal will vary based on the locking edge rail chosen by the Contractor. Deck and parapet lengths shown elsewhere in the plans are dimensioned to the concrete opening, not the joint opening, and are based on the rolled locking edge rail. If the Contractor elects to use a different locking edge rail, dimensional adjustments may be required. One exception to this would be the strip seal joint at the end of the precast bridge approach slab. For these cases the pavement connector length shall be adjusted, not the length of the bridge approach slab.



SHOWING ROLLED RAIL JOINT

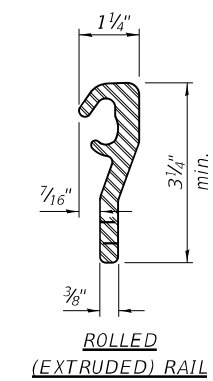


SHOWING WELDED RAIL JOINT

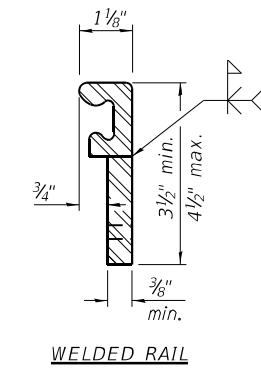
* 5/8" Ø x 6" studs @ 6" cts. (alternate angled/bent studs with horizontal studs)
 3/8" Ø threaded rods in 7/16" Ø holes at ±4'-0" cts. for holding the proper joint opening based on the temperature during the deck pour. Place to miss studs. All rods shall be burned, or sawed off flush with the plates after concrete is set.

SECTION A-A

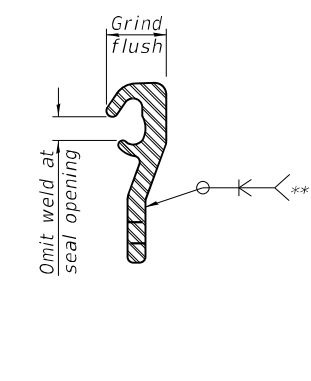
* Granular or solid flux filled headed studs conforming to Article 1006.32 of the Std. Specs., automatically end welded.



ROLLED (EXTRUDED) RAIL



WELDED RAIL



LOCKING EDGE RAIL SPLICE

The inside of the locking edge rail groove shall be free of weld residue. Rolled rail shown, welded rail similar.

LOCKING EDGE RAILS

** Back gouge not required if complete joint penetration is verified by mock-up.

MODEL: Default
 FILE NAME: \\kpf.com\dis\Bridges\2100142 (IDOT Work Order #4 SN 071-0055)\02_Design (MS)\071-0055_19_Prefomed Joint Strip Seal.dgn

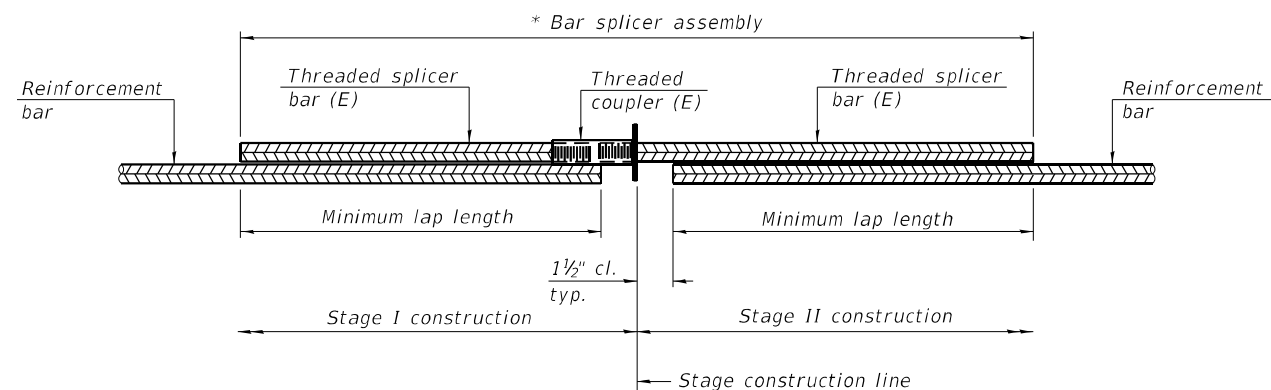


USER NAME =	DESIGNED -	REVISED -
CHECKED -	REVISED -	
PLOT SCALE =	DRAWN -	REVISED -
PLOT DATE =	CHECKED -	REVISED -

STATE OF ILLINOIS
 DEPARTMENT OF TRANSPORTATION

SN 071-0055 IL 64 CROSSING I-39 (EXIT 104)
 PREFORMED JOINT STRIP SEAL

F.A. RTE.	SECTION	COUNTY	TOTAL SHEETS	SHEET NO.
39	(141-2HB-1)BD	OGLE	22	19
CONTRACT NO. 64P88				



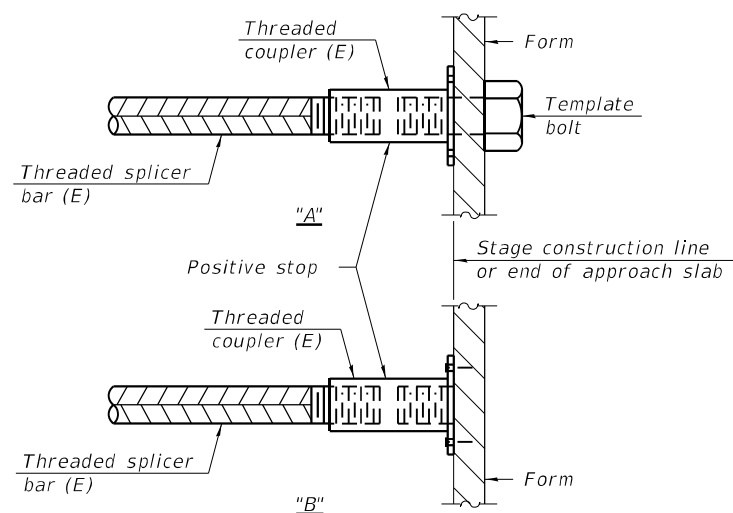
STANDARD BAR SPLICER ASSEMBLY PLAN

(All components shall be provided from one supplier)

Threaded splicer bar length = min. lap length + 1 1/2" + thread length

* Epoxy not required on Bar Splicer Assembly components used in conjunction with black bars.

Location	Bar size	No. assemblies required	Minimum lap length
Deck	#5	16	3'-6"
Abutment	#6	4	4'-0"
Median	#5	12	3'-6"

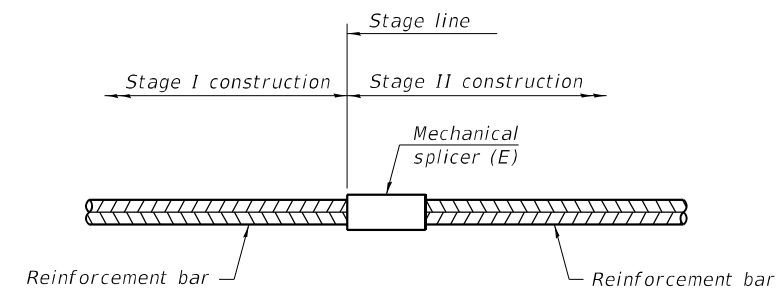


INSTALLATION AND SETTING METHODS

"A" : Set bar splicer assembly by means of a template bolt.

"B" : Set bar splicer assembly by nailing to wood forms or cementing to steel forms.

(E) : Indicates epoxy coating.



STANDARD MECHANICAL SPLICER

Location	Bar size	No. assemblies required

Notes:
 Splicer bars shall be deformed with threaded ends and have a minimum 60 ksi yield strength.
 All reinforcement shall be lapped and tied to the splicer bars.
 Bar splicer assemblies shall be epoxy coated according to the requirements for reinforcement bars. See Section 508 of the Standard Specifications.
 See approved list of bar splicer assemblies and mechanical splicers for alternatives.

MODEL: Default
 FILE NAME: \\kpf.com\dis\Bridges\2100142 (IDOT Work Order #4 SN 071-0055)\02_Design (MS)\071-0055 20_Bar Splices.dgn



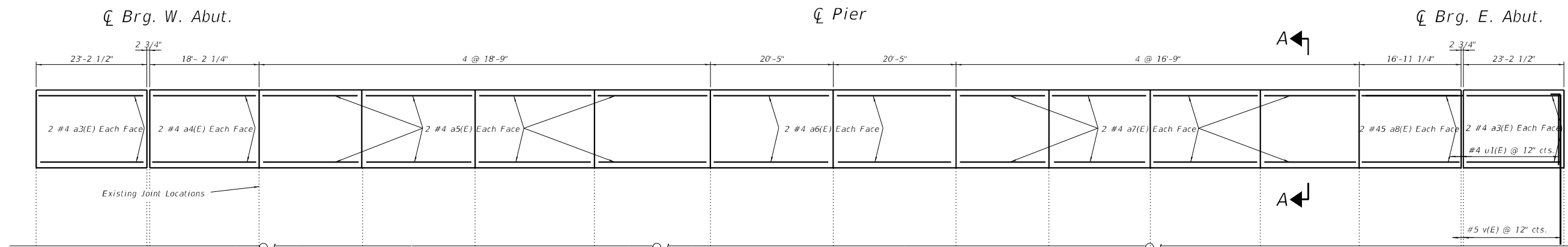
1500 Sherman Ave, Suite 1020
 Evanston, IL 60201
 847-859-7790
 www.kpff.com

USER NAME =	DESIGNED -	REVISED -
PLOT SCALE =	CHECKED -	REVISED -
PLOT DATE =	DRAWN -	REVISED -
	CHECKED -	REVISED -

STATE OF ILLINOIS
 DEPARTMENT OF TRANSPORTATION

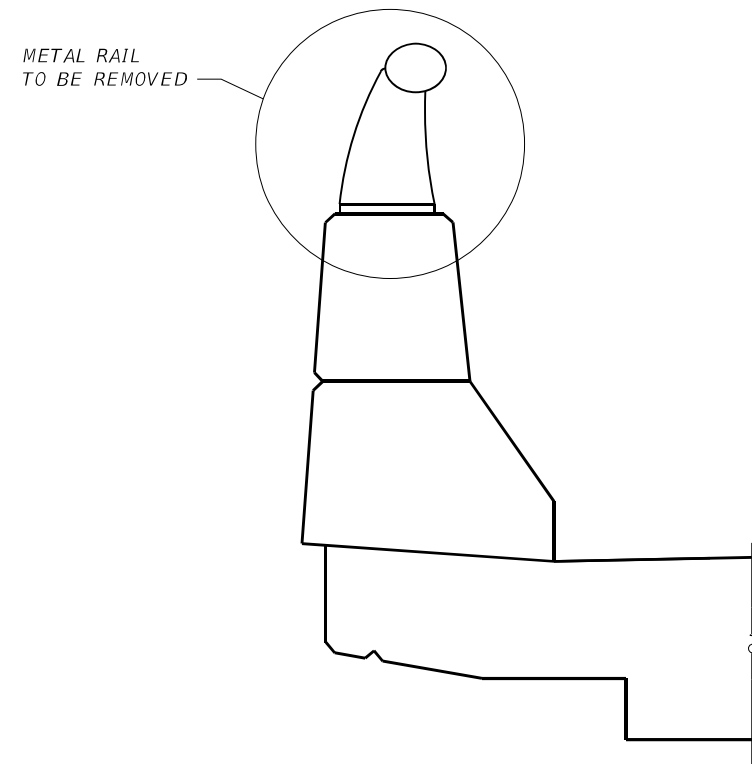
SN 071-0055 IL 64 CROSSING I-39 (EXIT 104)
 BAR SPLICES

F.A. RTE.	SECTION	COUNTY	TOTAL SHEETS	SHEET NO.
39	(141-2HB-1BD)	OGLE	22	20
CONTRACT NO. 64P88				
ILLINOIS FED. AID PROJECT				

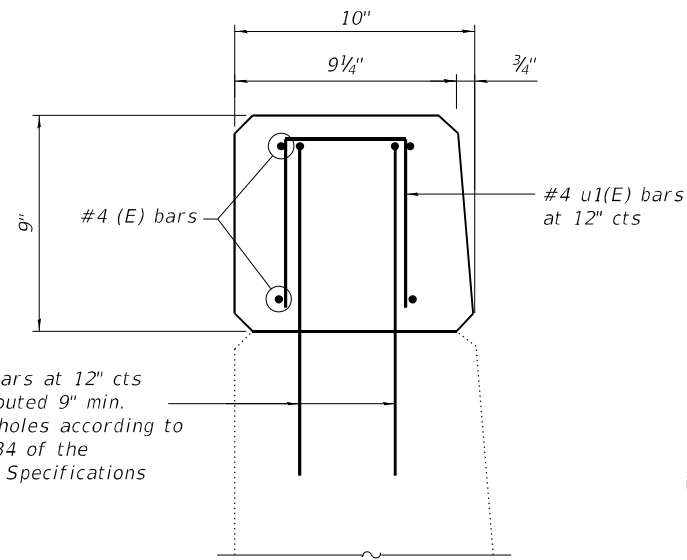


If the anchorage section of the approach guardrail conflicts with the barrier improvements, it shall be removed during rail removal and replaced after the barrier concrete has cured. Cost included with Remove Barrier Rail.

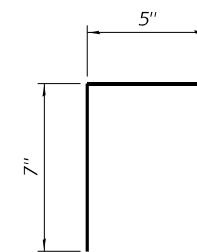
**INSIDE ELEVATION NORTH BARRIER
(SOUTH SIMILAR)**



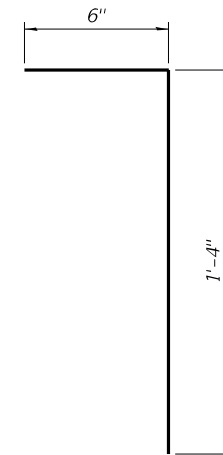
EXISTING BARRIER SECTION



SECTION A-A



BAR u1(E)



BAR v(E)

MODEL: Default
FILE NAME: \\kpff.com\dis\Bridges\2100142 (DOT Work Order #4 SN 071-0055)\02_Design (MS)\071-0055_21_Barrier Improvements.dgn
11/19/2021 7:22:13 PM

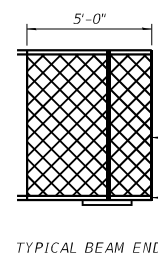


USER NAME =	DESIGNED -	REVISED -
PLOT SCALE =	CHECKED -	REVISED -
PLOT DATE =	DRAWN -	REVISED -
	CHECKED -	REVISED -

STATE OF ILLINOIS
DEPARTMENT OF TRANSPORTATION

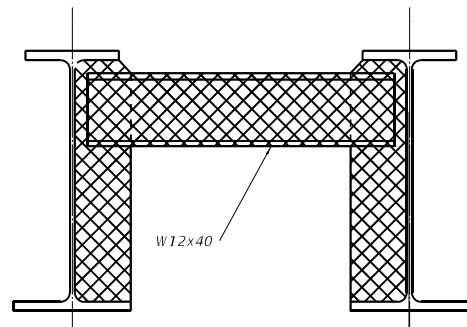
SN 071-0055 IL 64 CROSSING I-39 (EXIT 104)
BARRIER IMPROVEMENTS

F.A. RTE.	SECTION	COUNTY	TOTAL SHEETS	SHEET NO.
39	(141-2HB-1BD)	OGLE	22	21
CONTRACT NO. 64P88				
ILLINOIS FED. AID PROJECT				



48" Deep Plate Girder
1 3/4" x 16" Bot. Fl.

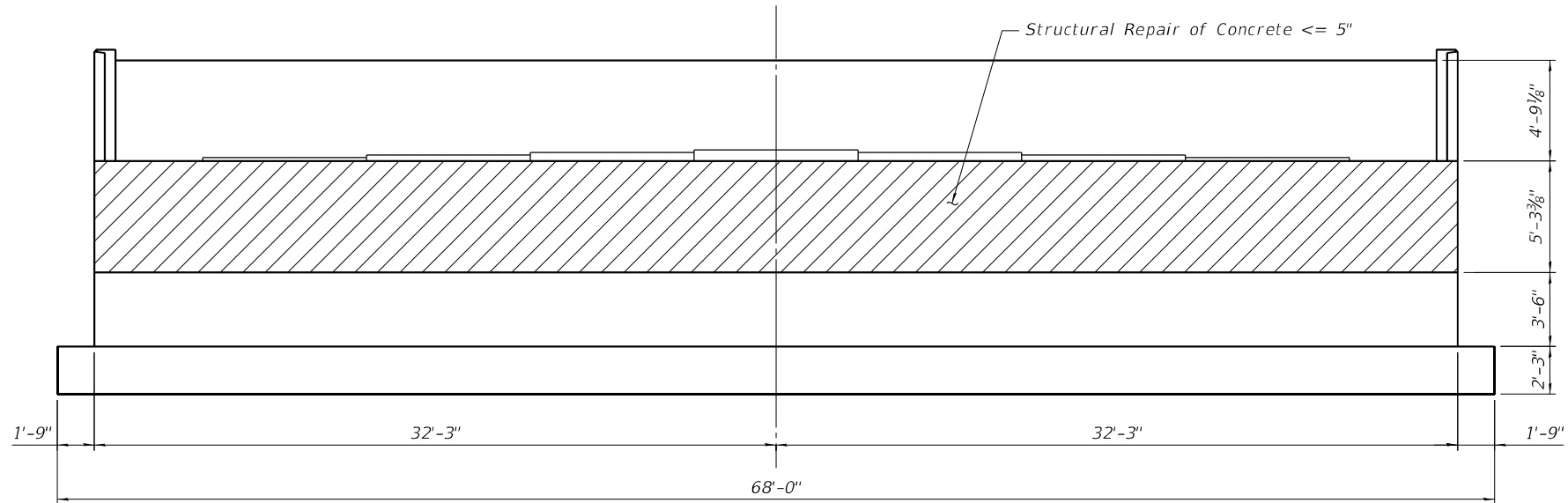
TYPICAL BEAM END



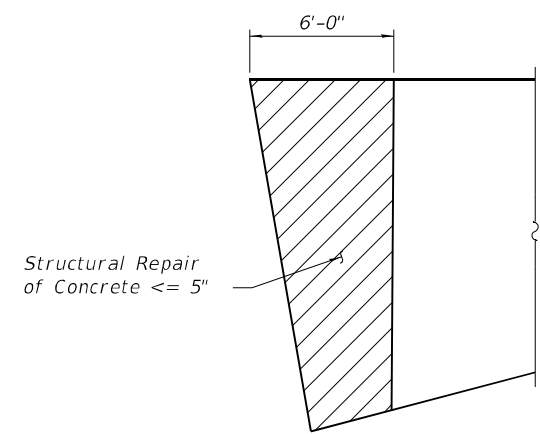
W12x40

ELEVATION

Clean and Paint end diaphragm at Abutments.
Clean and Paint 5'-0" from the end of Beams at abutments.
All exposed faces for both members.



EAST ABUTMENT



SOUTH WINGWALL

MODEL: Default
FILE NAME: \\kpf.com\dis\Bridges\2100142 (DOT Work Order #4 SN 071-0055)\02_Design (MS)\071-0055 22_Steel and Abutment Repairs.dgn



USER NAME =	DESIGNED -	REVISED -
PLOT SCALE =	CHECKED -	REVISED -
PLOT DATE =	DRAWN -	REVISED -
	CHECKED -	REVISED -

STATE OF ILLINOIS
DEPARTMENT OF TRANSPORTATION

SN 071-0055 IL 64 CROSSING I-39 (EXIT 104)
STEEL AND ABUTMENT REPAIRS

F.A. RTE.	SECTION	COUNTY	TOTAL SHEETS	SHEET NO.
39	(141-2HB-1BD)	OGLE	22	22
CONTRACT NO. 64P88				
ILLINOIS FED. AID PROJECT				