

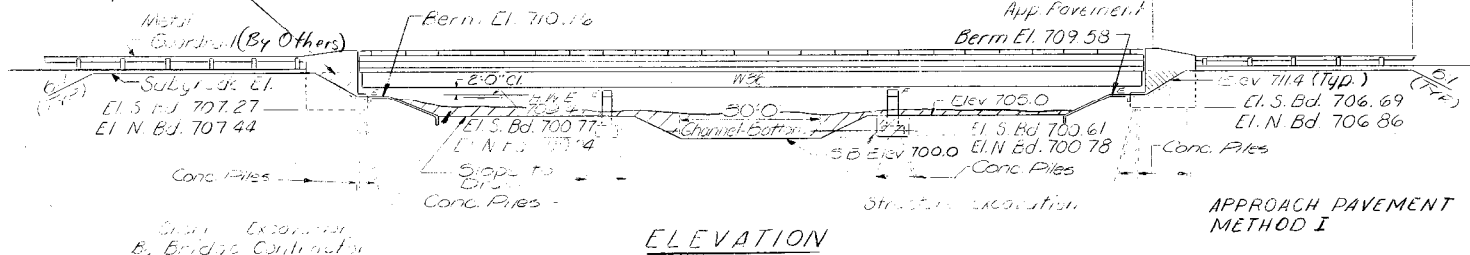
B.M. #43A R.I. SPIKE IN FENCE CORNER 330' RT
STA 711.25 ELEV. 710.05

STATE OF ILLINOIS

ROUTE NO.	SECTION	COUNTY	TOTAL SHEETS	SHEET NO.
FAI 55	57-2B-2	MCLEAN	64	10

SHEET NO. 1
17 SHEETS

This portion of Embankment backfill
by Bridge Contractor after abutment
is in place



ELEVATION

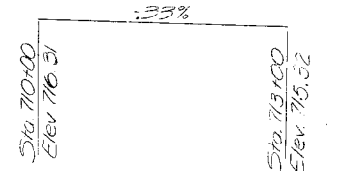
Conc. Piles
Slope to Ch.
Conc. Piles
Struct. Excavation
Approach Pavement Method I

DESIGN STRESSES

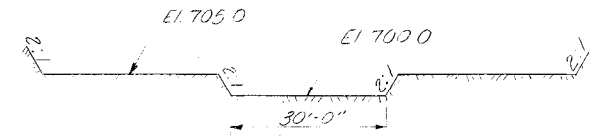
R=1200 psi Super
R=1400 psi Curb, F-rampet & Sid
F=20000 psi Struc. & Reinf
V=75 psi Flyp
n=10
Design Sp. in. concrete 1969 ILL. (as applicable)
LOADING HS20-44 & ALT.
Allowance for future wearing surface 25#/sq. ft.

WATERWAY INFORMATION

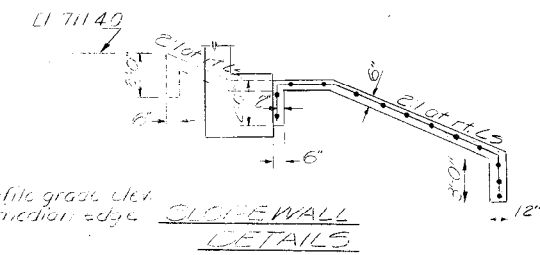
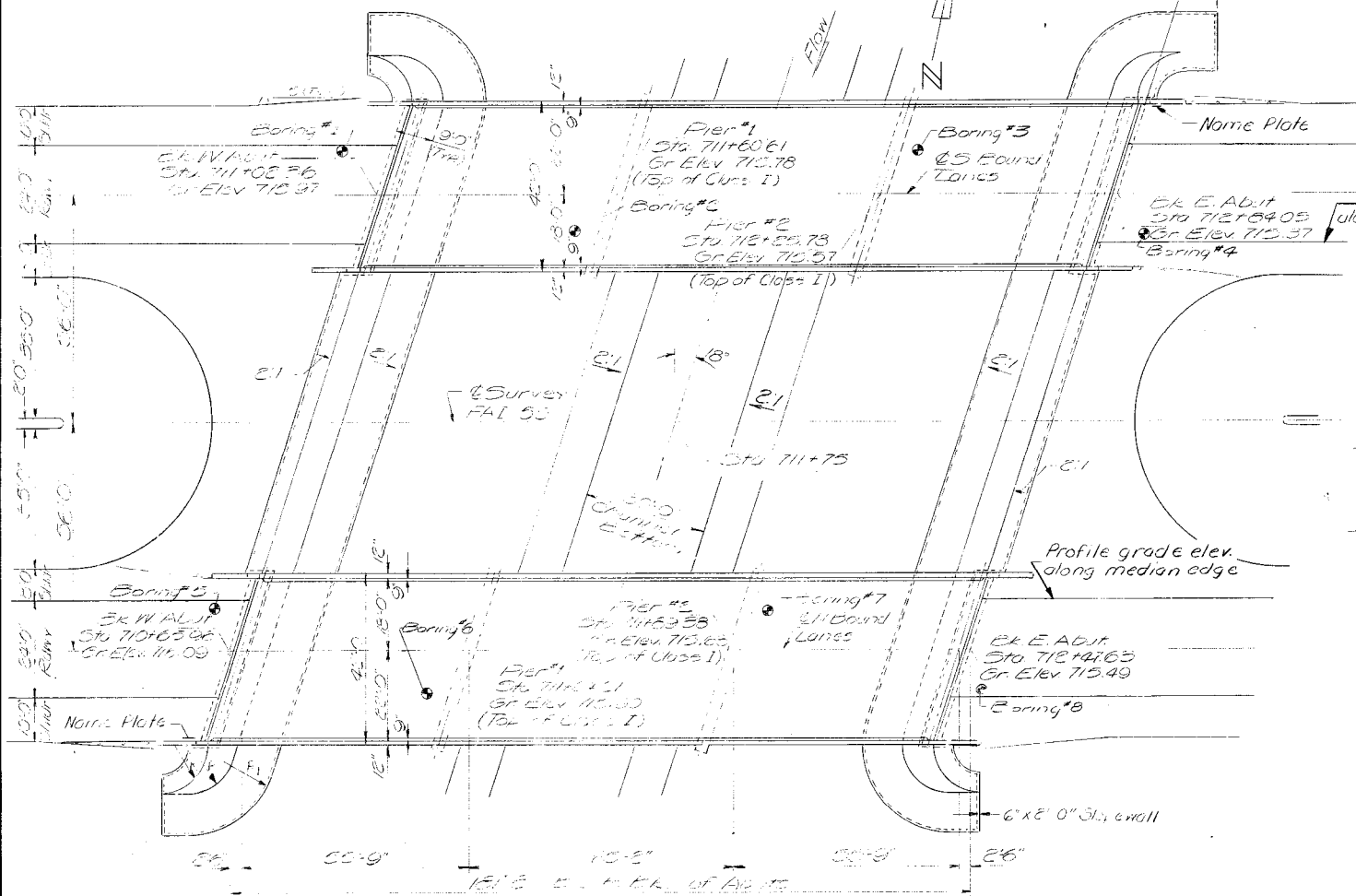
Drainage Area 17280 Acres
Character Cultivated, Pasture
Road Opening 816 Sq. Ft.
Proposed Opening 816 Sq. Ft.
Q50 4060 cfs
Low Water Elevation 700.5



PROPOSED PROFILE
FAI RTE 55
(at median edge)
Top 1 1/2" Class I Surfacing - Waterproofing



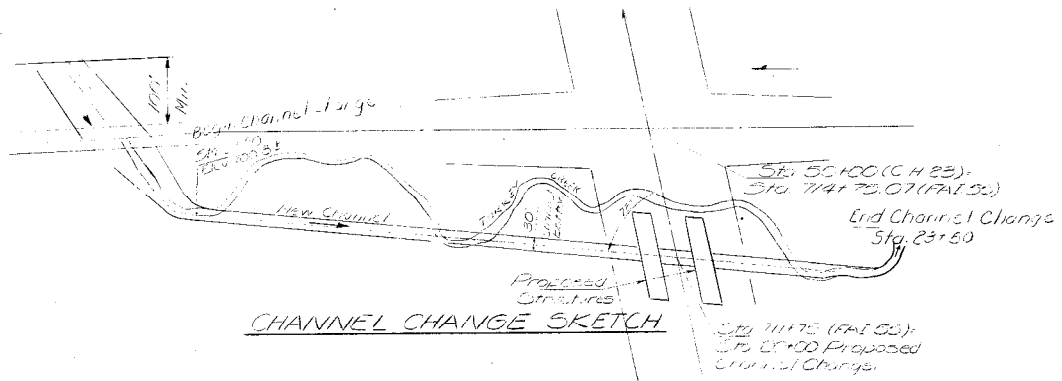
PROPOSED CHANNEL



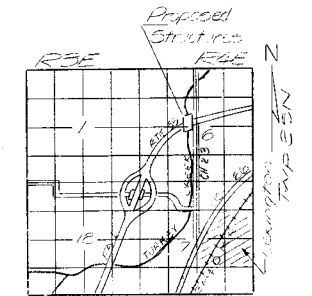
SLOPE WALL
DETAILS

STATION 711+75
BUILT BY
STATE OF ILLINOIS
FAI RTE 55 SEC. 57-2B-2
FA PROJ. I-55-5 (36)
LOADING HS20 & ALT.

NAME PLATE
See Std 2113



CHANNEL CHANGE SKETCH



LOCATION SKETCH

PROJ. I-55-5 (36)117
GENERAL PLAN ELEVATION
FAI RTE 55 over TURKEY CR
FAI RTE 55 SEC. 57-2B-2
MCLEAN COUNTY
STA. 711+75

DESIGNED	19-11
CHECKED	EXAMINED
DRAWN	PASSED
CHECKED	APPROVED

W. Abut
R=12'-0"
R₁=22'-3"

E. Abut
R=12'-0"
R₁=21'-3"

**DETAILS OF BRIDGE APPROACHES
FOR FEDERAL AID INTERSTATE ROUTES**

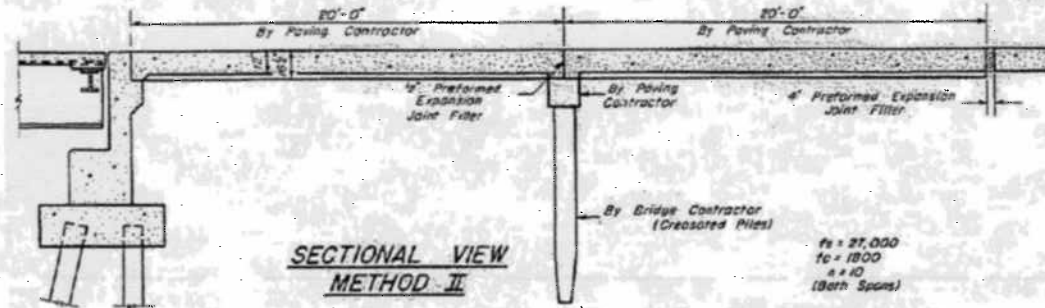
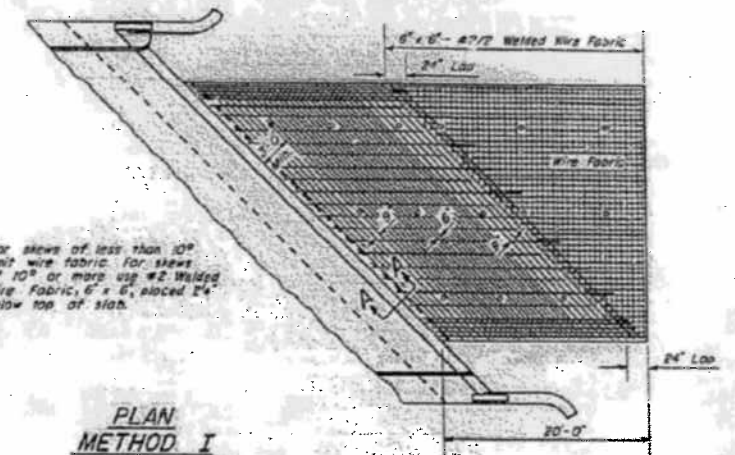
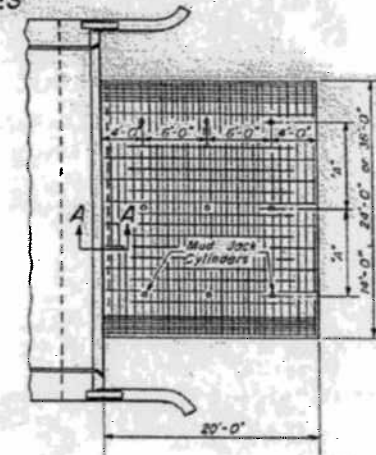
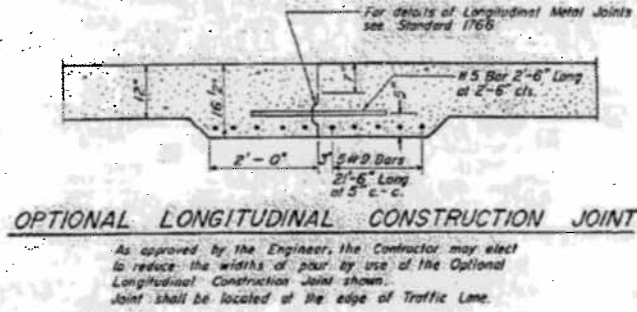
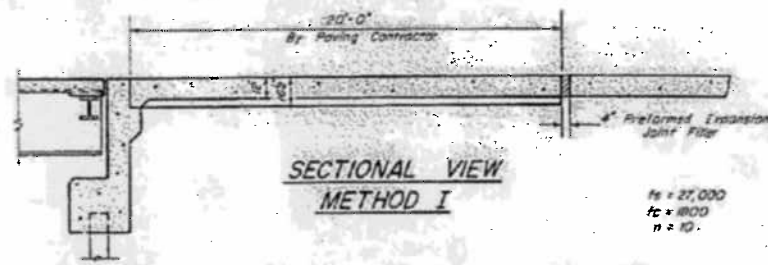
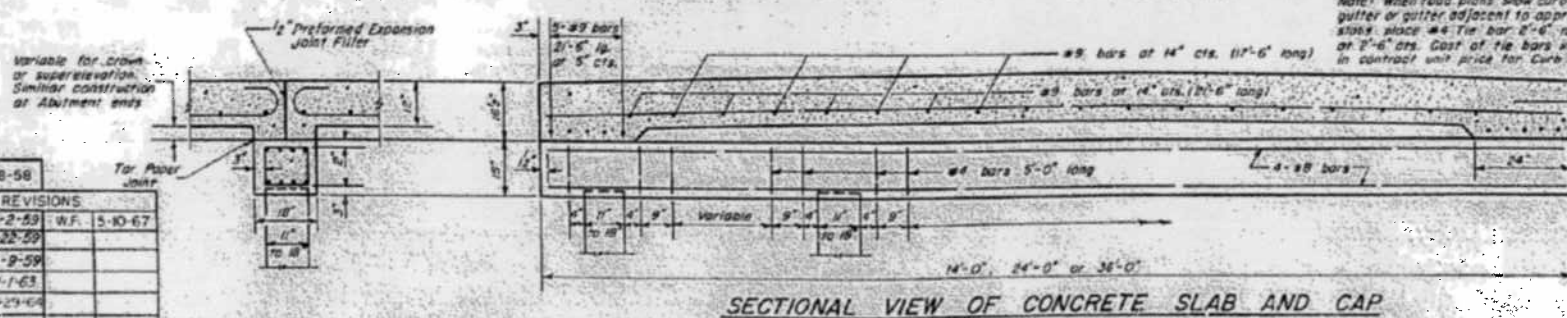
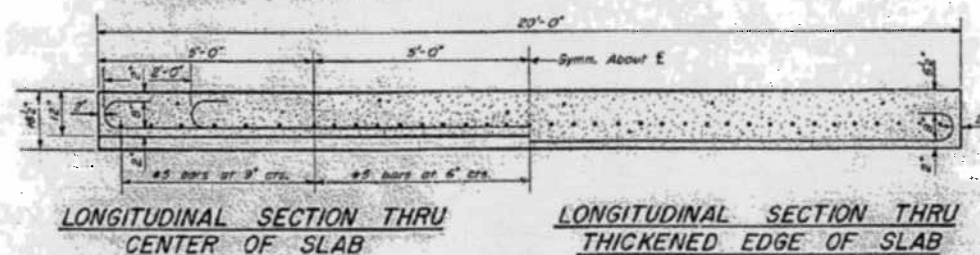
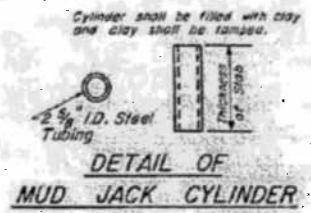
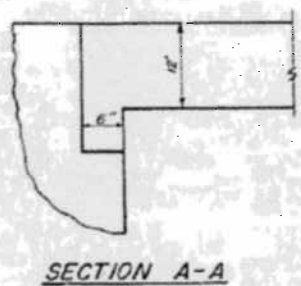
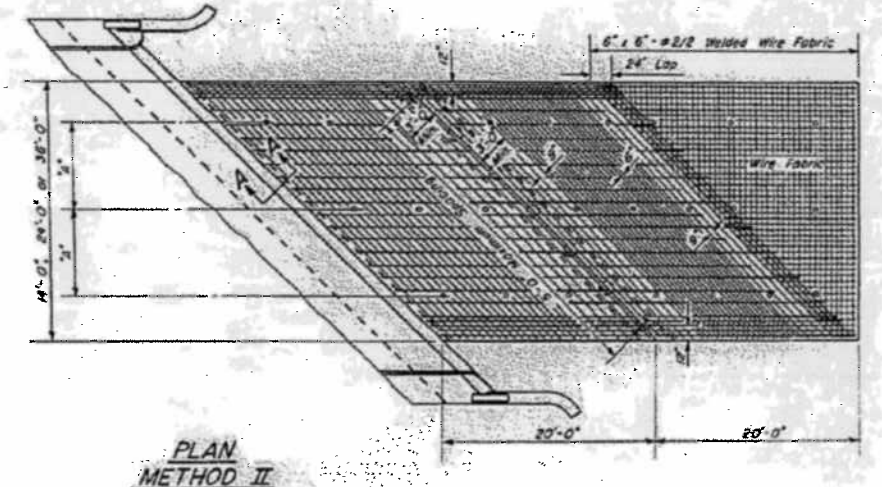
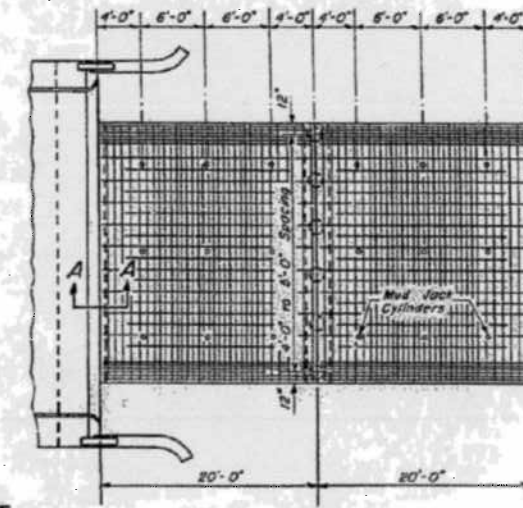
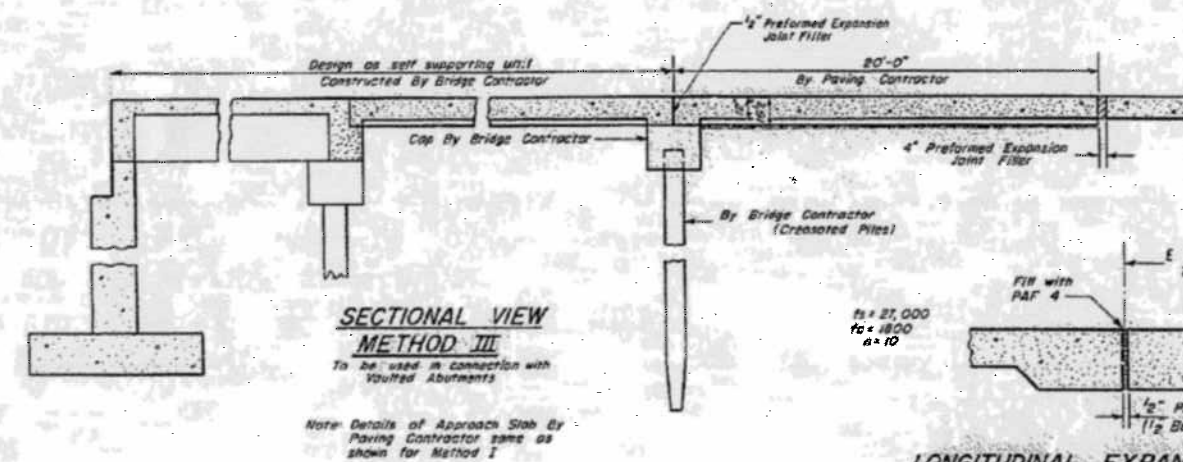


TABLE OF "A" DIMENSIONS

Width of Approach Slab	Dimension "A" (Spacing of Mud Jack Cylinders)
14'	6'-0"
24'	8'-0"
36'	2 Spaces at 8'-0"

Expanded metal weighing not less than 75 Lbs. per 100 sq. ft. or a welded bar mat weighing not less than 75 Lbs. per 100 sq. ft. having members of equal size in both directions and spaced not over 8" apart may be used instead of the #2 Welded Wire Fabric, 6' x 6', provided the expanded metal or bar mat is furnished at no additional cost to the State.



GENERAL NOTES

The slab or slabs will be paid for at the contract unit price for PORTLAND CEMENT CONCRETE PAVEMENT (16'-12"-16'-12"). The concrete cap will be paid for at the contract unit price for CLASS X CONCRETE.

Reinforcement Bars will be paid for at the contract unit price for REINFORCEMENT BARS, except as noted.

The Welded Wire Fabric, Mud Jack Cylinders and Preformed Expansion Joint Filler shall be included in the unit price bid for PORTLAND CEMENT CONCRETE PAVEMENT (16'-12"-16'-12").

Preformed Expansion Joint Filler shall conform to Section 129 of the Standard Specifications.

Width of Bridge Approach Slab pours shall be determined before the reinforcement bars are fabricated.

The Contractor shall, after completion of the finishing operations, mark the location of the Mud Jack Cylinders.

STATE OF ILLINOIS
DEPARTMENT OF PUBLIC WORKS AND BUILDINGS
DIVISION OF HIGHWAYS

ISSUED 12-18-58

REVISED	BY	DATE
WAS	2-2-59	W.F. 5-10-67
CET	6-22-59	
WAS	12-9-59	
W.F.	10-1-63	
KHW	7-23-64	
W.F.	10-28-64	

PASSED May 10 1967
ENGINEER OF BRIDGE AND TRAFFIC STRUCTURES

APPROVED May 10 1967
ENGINEER OF DESIGN