

STATE OF ILLINOIS
DEPARTMENT OF TRANSPORTATION

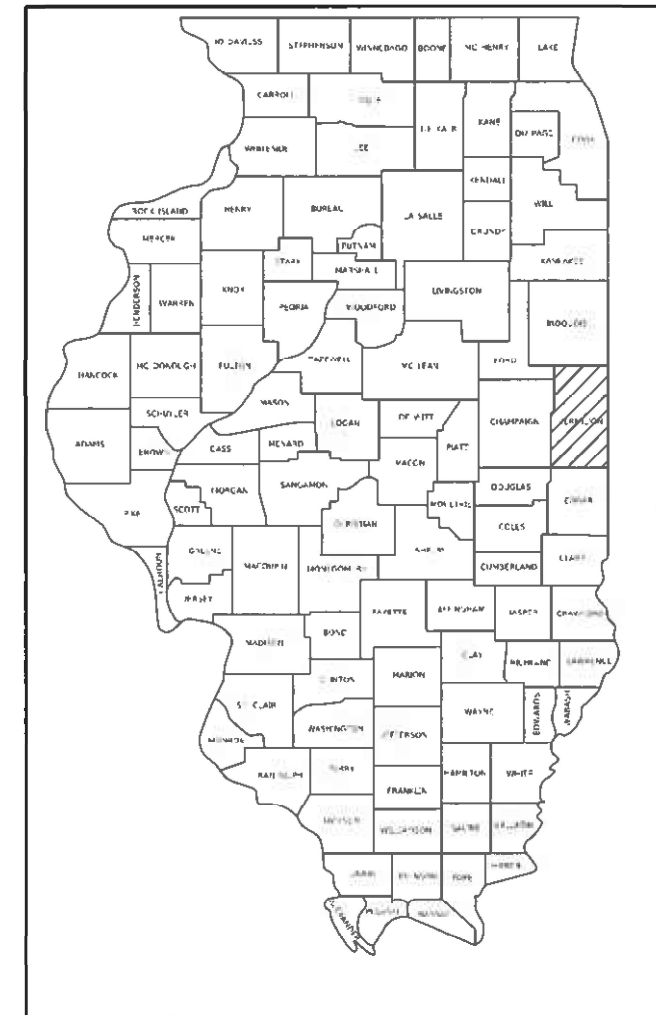
F.A. RITE	SECTION	COUNTY	TOTAL SHEETS	SHEET NO.
VAR	D5 HSIP GR 2020-1	VERMILION	10	1
		ILLINOIS	CONTRACT NO. 70D89	

FOR INDEX OF SHEETS, SEE SHEET NO. 2
FOR LOCATION MAPS, SEE SHEET NO. 3
FOR SUMMARY OF QUANTITIES, SEE SHEET NO. 4-5

PROPOSED HIGHWAY PLANS

VARIOUS ROUTES
SECTION D5 HSIP GR 2020-1
PROJECT HSIP-DUFQ(766)
VERMILION COUNTY
GUARDRAIL &
GUARDRAIL END-SECTION REPLACEMENT

D-95-034-19

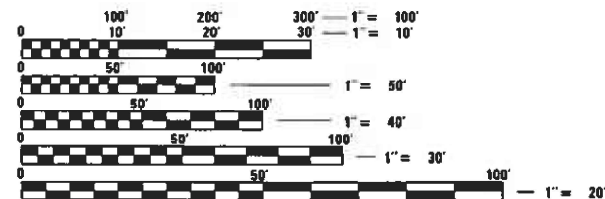


C-95-039-19



ROADWAY CLASSIFICATION
OTHER PRINCIPLE ARTERIAL

DESIGN DESIGNATION
NA



FULL SIZE PLANS HAVE BEEN PREPARED USING STANDARD ENGINEERING SCALES. REDUCED SIZED PLANS WILL NOT CONFORM TO STANDARD SCALES. IN MAKING MEASUREMENTS ON REDUCED PLANS, THE ABOVE SCALES MAY BE USED.

J.U.L.I.E.
JOINT UTILITY LOCATION INFORMATION FOR EXCAVATORS
1-800-892-0123
OR 811

PROJECT ENGINEER: JASON STULTS
PROJECT MANAGER: JOSEPH GRAZIANO
DESIGNERS: BRANDON SCHULTZ & XINYU SUN
PHONE NUMBER: (217)-465-4181
CONTRACT NO. 70D89

STATE OF ILLINOIS
DEPARTMENT OF TRANSPORTATION

SUBMITTED 10/14/2021
Kensil A. Garnett
REGIONAL ENGINEER

December 10, 2021
[Signature]
ENGINEER OF DESIGN AND ENVIRONMENT

December 10, 2021
Stephen M. [Signature]
DIRECTOR OF HIGHWAYS PROJECT IMPLEMENTATION

PRINTED BY THE AUTHORITY
OF THE STATE OF ILLINOIS

INDEX OF SHEETS

<u>SHEET NO.</u>	<u>DESCRIPTION</u>
1	COVER SHEET
2	INDEX OF SHEETS
2	LIST OF HIGHWAY STANDARDS
2	GENERAL NOTES
3	LOCATION MAPS
4-5	SUMMARY OF QUANTITIES
6-9	SCHEDULE OF QUANTITIES
10	DETAIL FOR MOUNTING TRAFFIC BARRIER TERMINAL TYPE 6A (MODIFIED)

LIST OF HIGHWAY STANDARDS

<u>STANDARD NO.</u>	<u>NAME OF STANDARD</u>
000001-08	STANDARD SYMBOLS, ABBREVIATIONS AND PATTERNS
001006	DECIMAL OF AN INCH AND OF A FOOT
630001-12	STEEL PLATE BEAM GUARDRAIL
630301-09	SHOULDER WIDENING FOR TYPE 1 (SPECIAL) GUARDRAIL TERMINALS
631011 10	TRAFFIC BARRIER TERMINAL, TYPE 2
631031-17	TRAFFIC BARRIER TERMINAL, TYPE 6
631032-09	TRAFFIC BARRIER TERMINAL, TYPE 6A
701001-02	OFF-RD OPERATIONS, 2L, 2W, MORE THAN 15' (4.5m) AWAY
701006-05	OFF-RD OPERATIONS, 2L, 2W, 15' (4.5m) TO 24" (600mm) FROM PAVEMENT EDGE
70101-05	OFF-RD OPERATIONS, MULTILANE, 15' (4.5m) TO 24" (600mm) FROM PAVEMENT EDGE
701106-02	OFF-RD OPERATIONS, MULTILANE, MORE THAN 15' (4.5) AWAY
701201-05	LANE CLOSURE, 2L, 2W, DAY ONLY, FOR SPEEDS ≥ 45 MPH
701301-04	LANE CLOSURE, 2L, 2W, SHORT TIME OPERATIONS
701501-06	URBAN LANE CLOSURE, 2L, 2W, UNDIVIDED
701601-09	URBAN LANE CLOSURE, MULTILANE, 1W OR 2W WITH NONTRAVERSABLE MEDIAN
701606-10	URBAN SINGLE LANE CLOSURE, MULTILANE, 2W WITH MOUNTABLE MEDIAN
701801-06	SIDEWALK, CORNER OR CROSSWALK CLOSURE
701901-08	TRAFFIC CONTROL DEVICES
720001-01	SIGN PANEL MOUNTING DETAILS
720006-04	SIGN PANEL ERECTION DETAILS
720011-01	METAL POSTS FOR SIGNS, MARKERS & DELINEATORS
725001 01	OBJECT AND TERMINAL MARKERS
728001-01	TELESCOPING STEEL SIGN SUPPORT
729001-01	APPLICATIONS OF TYPES A & B METAL POSTS (FOR SIGNS & MARKERS)
731001-01	BASE FOR TELESCOPING STEEL SIGN SUPPORT
782006-01	GUARDRAIL AND BARRIER WALL REFLECTOR MOUNTING DETAILS

GENERAL NOTES

G.N.-100A
ELECTRONIC FILES AND/OR ELECTRONIC SURVEY INFORMATION INCLUDING CADD FILES WILL NOT BE AVAILABLE TO THE CONTRACTOR.

G.N.-G30-SPL
THE GUARDRAIL TO BE REPLACED ON THIS CONTRACT OCCURS AT VARIOUS LOCATIONS THROUGHOUT VERMILION COUNTY. IT WILL BE THE CONTRACTOR'S RESPONSIBILITY TO DETERMINE WHAT TYPE OF MATERIAL THE GUARDRAIL POSTS WILL BE DRIVEN INTO. THIS WORK WILL NOT BE PAID FOR SEPARATELY, BUT WILL BE CONSIDERED INCIDENTAL TO THE VARIOUS GUARDRAIL PAY ITEMS INCLUDED IN THE PLANS.

COMMITMENTS

THERE ARE NO COMMITMENTS FOR THIS CONTRACT.

MODEL: I:\MODEL\MHFE
FILE NAME: P:\Public\paw_beaufay.com\FW\DOT\Documents\DOT_Offices\District_5\Projects\0570089\CADD\DATA\CAD\Faces\0570089\paw_beaufay-gennotes.dwg

USER NAME = eaglinga	DESIGNED -	REVISED -
	DRAWN -	REVISED -
PLOT SCALE = 40,0000 * / in.	CHECKED -	REVISED -
PLOT DATE = 10/14/2021	DATE -	REVISED -

**STATE OF ILLINOIS
DEPARTMENT OF TRANSPORTATION**

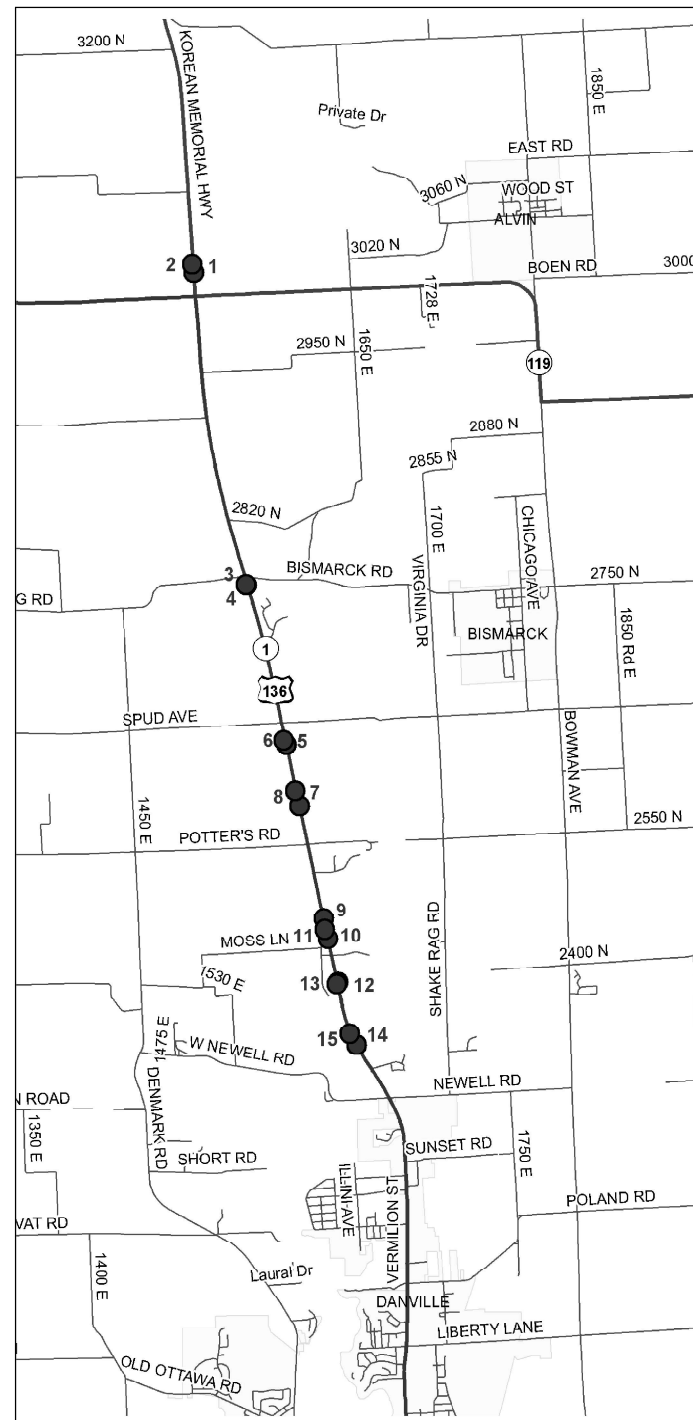
**INDEX OF SHEETS, LIST OF HIGHWAY STANDARDS,
GENERAL NOTES**

SCALE: SHEET 1 OF 1 SHEETS STA. TO STA.

F.A. RTE.	SECTION	COUNTY	TOTAL SHEETS	SHEET NO.
VAR	D5 HSIP GR 2020-1	VERMILION	10	2
CONTRACT NO. 70D89				
ILLINOIS FED. AID PROJECT				

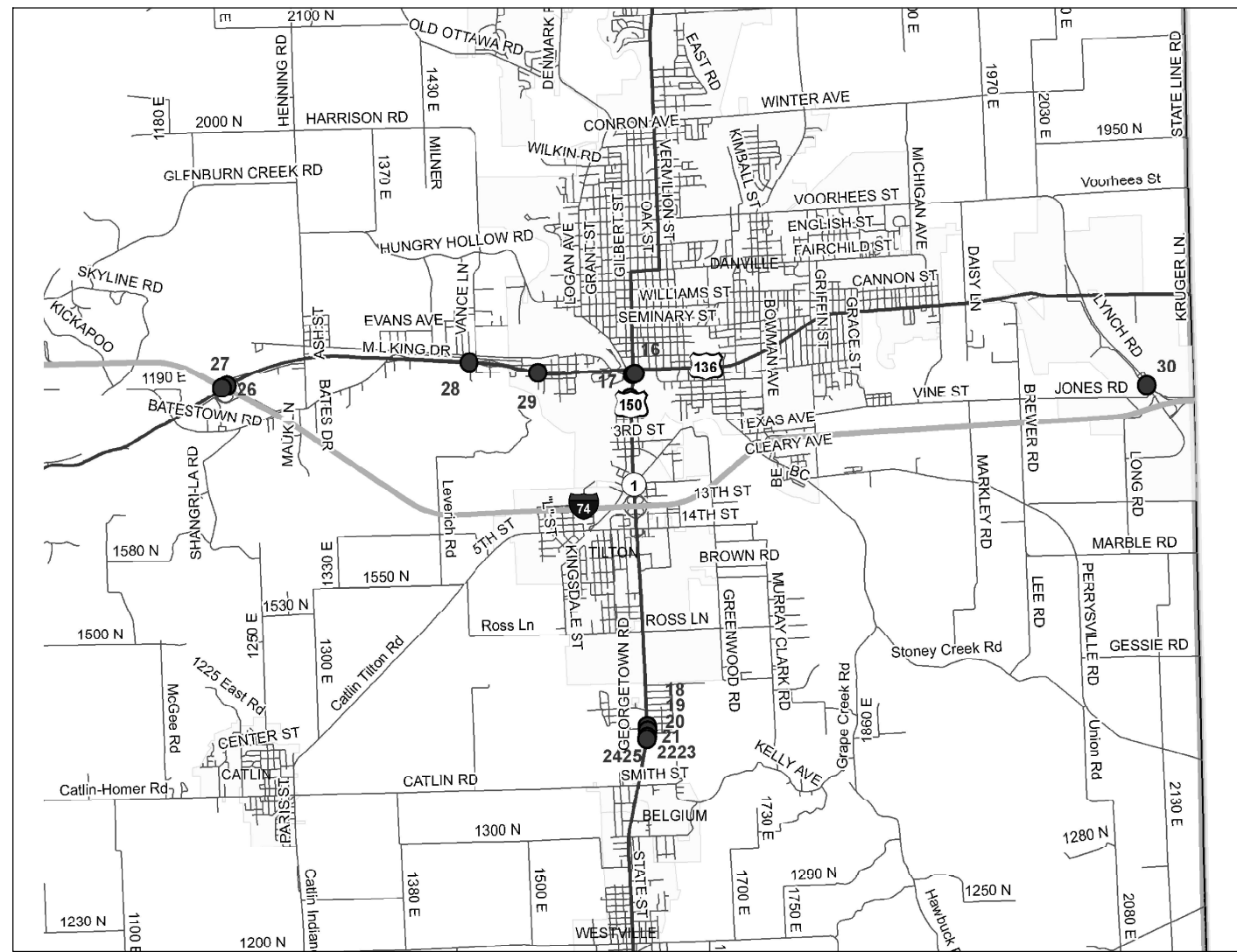
LOCATION MAPS

NORTH SECTION

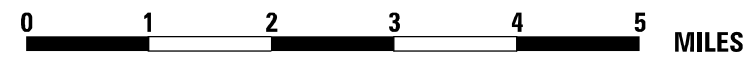


TOWNSHIPS:
SOUTH ROSS, BLOUNT, NEWELL

CENTRAL SECTION



TOWNSHIPS:
DANVILLE



● GUARDRAIL REPLACEMENT LOCATION

MODEL: I:\MODEL\MAPS
FILE NAME: p:\pub\cpx\beadby.com\PIV\DOT\Documents\DOT_Offices\Dir\drct_5\Project\05700989\CADD\data\CAD\Access\05700989\pht-location_maps.dgn

USER NAME = eaglinga	DESIGNED -	REVISED -
	DRAWN -	REVISED -
PLOT SCALE = 40,0000 * / in.	CHECKED -	REVISED -
PLOT DATE = 10/14/2021	DATE -	REVISED -

STATE OF ILLINOIS
DEPARTMENT OF TRANSPORTATION

LOCATION MAPS

SCALE: SHEET 1 OF 1 SHEETS STA. TO STA.

F.A. RTE.	SECTION	COUNTY	TOTAL SHEETS	SHEET NO.
VAR	D5 HSIP GR 2020-1	VERMILION	10	3
CONTRACT NO. 70D89				
ILLINOIS FED. AID PROJECT				

SUMMARY OF QUANTITIES

(SHEET 1 OF 2)

LOCATION OF WORK:	VARIOUS ROUTES VERMILION COUNTY URBAN 2 & 4 LANE	VARIOUS ROUTES VERMILION COUNTY RURAL 2 LANE
FUNDING BREAKOUT:	90% FEDERAL 10% STATE	90% FEDERAL 10% STATE
CONSTRUCTION TYPE CODE:	0021	0021

CODE NO	ITEM	UNIT	TOTAL QUANTITY	QUANTITY	QUANTITY
20400800	FURNISHED EXCAVATION	CU YD	200.0	70.0	130.0
25000210	SEEDING, CLASS 2A	ACRE	0.5	0.25	0.25
25000400	NITROGEN FERTILIZER NUTRIENT	POUND	25.0	9.0	16.0
25000500	PHOSPHORUS FERTILIZER NUTRIENT	POUND	25.0	9.0	16.0
25000600	POTASSIUM FERTILIZER NUTRIENT	POUND	25.0	9.0	16.0
25100115	MULCH, METHOD 2	ACRE	0.5	0.25	0.25
28000250	TEMPORARY EROSION CONTROL SEEDING	POUND	104.0	36.0	68.0
63000001	STEEL PLATE BEAM GUARDRAIL, TYPE A, 6 FOOT POSTS	FOOT	4,912.5	1,887.5	3,025.0
63100045	TRAFFIC BARRIER TERMINAL, TYPE 2	EACH	3.0	3.0	0.0
63100085	TRAFFIC BARRIER TERMINAL, TYPE 6	EACH	2.0	2.0	0.0
63100167	TRAFFIC BARRIER TERMINAL, TYPE 1 (SPECIAL) TANGENT	EACH	26.0	9.0	17.0
63200310	GUARDRAIL REMOVAL	FOOT	7,068.0	2,976.0	4,092.0

* SPECIALTY ITEM

MODEL: I:\MODEL\MAME
 FILE NAME: p:\u\c\paw\beadefy.com\FW\DOT\Documents\DOT\offices\Dir\dir_5\Project\0570B89\CAD\DATA\CAD\Faces\0570B89\pt-500.dgn

USER NAME = eaglinga	DESIGNED -	REVISED -
	DRAWN -	REVISED -
PLOT SCALE = 40,0000 * / in.	CHECKED -	REVISED -
PLOT DATE = 10/14/2021	DATE -	REVISED -

**STATE OF ILLINOIS
DEPARTMENT OF TRANSPORTATION**

SUMMARY OF QUANTITIES

SCALE: SHEET 1 OF 2 SHEETS STA. TO STA.

F.A. RTE.	SECTION	COUNTY	TOTAL SHEETS	SHEET NO.
VAR	D5 HSIP GR 2020-1	VERMILION	10	4
CONTRACT NO. 70D89				
ILLINOIS FED. AID PROJECT				

SUMMARY OF QUANTITIES

(SHEET 2 OF 2)

LOCATION OF WORK:	VARIOUS ROUTES VERMILION COUNTY URBAN 2 & 4 LANE	VARIOUS ROUTES VERMILION COUNTY RURAL 2 LANE
FUNDING BREAKOUT:	90% FEDERAL 10% STATE 0021	90% FEDERAL 10% STATE 0021
CONSTRUCTION TYPE CODE:		

CODE NO	ITEM	UNIT	TOTAL QUANTITY	QUANTITY	QUANTITY
67100100	MOBILIZATION	L SUM	1.0	0.3	0.7
72501000	TERMINAL MARKER - DIRECT APPLIED	EACH	26.0	9.0	17.0
78200005	GUARDRAIL REFLECTORS, TYPE A	EACH	92.0	37.0	55.0
X0326696	SIGN AND POST	EACH	2.0	2.0	0.0
X6310176	TRAFFIC BARRIER TERMINAL, TYPE 2 (SPECIAL)	EACH	3.0	0.0	3.0
X6310188	TRAFFIC BARRIER TERMINAL, TYPE 6A (MODIFIED)	EACH	2.0	0.0	2.0
X6330725	STIFF PLATE BEAM GUARDRAIL (SHORT RADIUS)	FOOT	75.0	12.5	62.5
X7010216	TRAFFIC CONTROL AND PROTECTION (SPECIAL)	L SUM	1.0	0.3	0.7

* SPECIALTY ITEM

MODEL: \\MODEL\MNMF
 FILE NAME: \\u:\caw\bea\fy.com\FW\DOT\Documents\DOT Office\District 5\Project\0570089\CAD\DATA\CAD\Faces\0570089\pt-500.dgn

USER NAME = eaglinga	DESIGNED -	REVISED -
	DRAWN -	REVISED -
PLOT SCALE = 40,0000 * / in.	CHECKED -	REVISED -
PLOT DATE = 10/14/2021	DATE -	REVISED -

**STATE OF ILLINOIS
DEPARTMENT OF TRANSPORTATION**

SUMMARY OF QUANTITIES

SCALE: SHEET 2 OF 2 SHEETS STA. TO STA.

F.A. RTE.	SECTION	COUNTY	TOTAL SHEETS	SHEET NO.
VAR	D5 HSIP GR 2020-1	VERMILION	10	5
CONTRACT NO. 70D89				
ILLINOIS FED. AID PROJECT				

SCHEDULE OF QUANTITIES

(SHEET 1 OF 4)

GUARDRAIL SCHEDULE

LOCATION	ROUTE	URBAN/ RURAL	LATITUDE	LONGITUDE	SLD	DIR	LANE	DESCRIPTION	63200310	63000001		78200005	X6330725	
									GR REM	SPBGR TY A 6 FT		GR REF TY A	SPBGR (SR)	
									FOOT	APPR	DEP	EACH	APPR	DEP
1	FAP 332	RURAL	40.302282	-87.658078	13.01	NB	DL	Appr (SN: 092-0198)	163.3	62.5		2.0		
2	FAP 332	RURAL	40.303251	-87.658301	12.94	SB	DL	Appr (SN: 092-0198)	164.5	62.5		2.0		
3*	FAP 332	RURAL	40.265233	-87.651384	15.59	SB	DL	Appr (At Entrance)	690.3		612.5	9.0	12.5	
4*	FAP 332	RURAL	40.265338	-87.651455	15.58	SB	DL	Dep (At Entrance)	124.5		50.0	2.0		12.5
5*	FAP 332	RURAL	40.246221	-87.645920	16.94	NB	DL	SN: 092-2027	414.8		312.5	6.0		
6*	FAP 332	RURAL	40.246779	-87.646336	16.90	SB	DL	SN: 092-2027	199.7		100.0	3.0		37.5
7*	FAP 332	RURAL	40.239020	-87.644201	17.44	NB	DL	SN: 092-8304	602.2		500.0	8.0		
8*	FAP 332	RURAL	40.240757	-87.644766	17.32	SB	DL	SN: 092-8304	714.7		612.5	9.0		
9*	FAP 332	RURAL	40.225675	-87.640965	18.37	NB	DL	S of Seton Hill Rd	314.6		212.5	4.0		
10*	FAP 332	RURAL	40.223259	-87.640387	18.56	NB	DL	SN: 092-8010	376.4		275.0	5.0		
11*	FAP 332	RURAL	40.224358	-87.640827	18.48	SB	DL	SN: 092-8010	326.8		225.0	5.0		
12*	FAP 332	URBAN	40.218043	-87.638990	18.92	NB	DL	Dep (SN: 092-0205)	598.0		537.5	8.0		12.5
13*	FAP 332	URBAN	40.217824	-87.639270	18.94	SB	DL	Appr (SN: 092-0205)	490.0		400.0	7.0		
14*	FAP 332	URBAN	40.210601	-87.636469	19.46	NB	DL	SN: 092-8011	252.8		150.0	4.0		
15*	FAP 332	URBAN	40.211992	-87.637484	19.35	SB	DL	SN: 092-8011	677.1		575.0	9.0		
16	FAP 332	URBAN	40.123812	-87.635278	0.03	NB	DL	Dep (SN: 092-0036)	74.3		50.0	2.0		
17*	FAP 332	URBAN	40.120402	-87.636229	26.07	SB	DL	Dep (SN: 092-0036)	193.0		137.5	3.0		
18	FAP 332	URBAN	40.073335	-87.634785	29.34	NB	DL	N of Forrest St at Hegeler	17.0					
19	FAP 332	URBAN	40.073318	-87.634752	29.35	NB	DL	N of Forrest St at Hegeler	17.0					
20	FAP 332	URBAN	40.073095	-87.634738	29.36	NB	DL	N of Forrest St at Hegeler	29.0					
21	FAP 332	URBAN	40.073446	-87.634752	29.33	NB	DL	N of Forrest St at Hegeler	30.0					
22	FAP 332	URBAN	40.072811	-87.634735	29.39	NB	DL	N of Lete St at Hegeler	112.0					
23	FAP 332	URBAN	40.071989	-87.634785	29.43	NB	DL	S of Lete St at Hegeler	140.0					
24	FAP 332	URBAN	40.071581	-87.634872	29.46	NB	DL	S of Lete St at Hegeler	108.0					
25	FAP 332	URBAN	40.071480	-87.634900	29.47	NB	DL	S of Lete St at Hegeler	11.0					
26	FAP 729	URBAN	40.123667	-87.710998	0.04	EB	DL	Dep (SN: 092-0051)	2.0		12.5	1.0		
27	FAU 7052	URBAN	40.123407	-87.711976	0.61	WB	DL	Dep (SN: 092-0051)	2.0		12.5	1.0		
28	FAP 729	URBAN	40.126109	-87.666029	0.83	WB	DL	Dead end stop @ Withner Street	31.0					
29	FAP 729	URBAN	40.124301	-87.653229	3.14	EB	DL	E of Avenue "F"	79.0					
30*	FAP 729	URBAN	40.120030	-87.540213	9.73	SB	DL	N of I-74 WB On Ramp	112.4		12.5	2.0		
SUB TOTALS =									7067.4	4912.5		92.0	75.0	
RURAL TOTALS =									4091.8	3025.0		55.0	62.5	
URBAN TOTALS =									2975.6	1887.5		37.0	12.5	
PROJECT TOTALS =									7067.4	4912.5		92.0	75.0	
RURAL TOTALS ROUNDED =									4092.0	3025.0		55.0	62.5	
URBAN TOTALS ROUNDED =									2976.0	1887.5		37.0	12.5	
PROJECT TOTALS ROUNDED =									7068.0	4912.5		92.0	75.0	

Notes:

*Guardrail plan quantities intended to match existing guardrail quantities.
 Location 12: 12.5 ft of SPBG (Short Radius) shall connect to 37.5 ft of SPBG Type A adjacent to private entrance, Type 2 shall terminate.
 Locations 16, and 17: 25 ft of SPBG connected to parapet wall shall remain in place.
 Locations 28 and 29: See sign schedule for additional work.

MODEL: \\MODEL\MMF8
 FILE NAME: \\PUB\ecw\beadby.com\PIV\DOT\Documents\DOT\iffact\Dir\dtd\5\Project\0570889\CAD\DATA\CAD\Faces\0570889\pt-sched.dgn

USER NAME = eaglinga	DESIGNED -	REVISED -
DRAWN -	REVISED -	
PLOT SCALE = 40,0000 */ in.	CHECKED -	REVISED -
PLOT DATE = 10/14/2021	DATE -	REVISED -

**STATE OF ILLINOIS
DEPARTMENT OF TRANSPORTATION**

SCHEDULE OF QUANTITIES		
SCALE:	SHEET 1 OF 4 SHEETS	STA. TO STA.

F.A. RTE.	SECTION	COUNTY	TOTAL SHEETS	SHEET NO.
VAR	D5 HSIP GR 2020-1	VERMILION	10	6
CONTRACT NO. 70DB9				
ILLINOIS FED. AID PROJECT				

SCHEDULE OF QUANTITIES

(SHEET 2 OF 4)

GUARDRAIL SCHEDULE (CONTINUED)

LOCATION	ROUTE	UREAN/ RURAL	LATITUDE	LONGITUDE	SLD STA	DIR	LANE	DESCRIPTION	63100045		63100085	63100167		72501000	X6310176		X6310188
									TBT TYPE 2		TBT TYPE 6	TBT TY 1 (SPL) TAN		TERM MARK - DA	TBT TYPE 2 SPL		TBT TY 6A
									APPR	DEP		APPR	DEP		APPR	DEP	Modified
									EACH	EACH	EACH		EACH	EACH		EACH	
1	FAP 332	RURAL	40.302282	-87.658078	13.01	NB	DL	Appr (SN: 092-0198)						1.0			1.0
2	FAP 332	RURAL	40.303251	-87.658301	12.94	SB	DL	Appr (SN: 092-0198)						1.0			1.0
3*	FAP 332	RURAL	40.265233	-87.651384	15.59	SB	DL	Appr (At Entrance)						1.0			
4*	FAP 332	RURAL	40.265338	-87.651455	15.58	SB	DL	Dep (At Entrance)						1.0	1.0		
5*	FAP 332	RURAL	40.246221	-87.645920	16.94	NB	DL	SN: 092-2027					1.0	1.0			2.0
6*	FAP 332	RURAL	40.246779	-87.646336	16.90	SB	DL	SN: 092-2027					1.0			1.0	
7*	FAP 332	RURAL	40.239020	-87.644201	17.44	NB	DL	SN: 092-8304					1.0	1.0			2.0
8*	FAP 332	RURAL	40.240757	-87.644766	17.32	SB	DL	SN: 092-8304					1.0	1.0			2.0
9*	FAP 332	RURAL	40.225675	-87.640965	18.37	NB	DL	S of Seton Hill Rd					1.0	1.0			2.0
10*	FAP 332	RURAL	40.223259	-87.640387	18.56	NB	DL	SN: 092-8010					1.0	1.0			2.0
11*	FAP 332	RURAL	40.224358	-87.640827	18.48	SB	DL	SN: 092-8010					1.0	1.0			2.0
12*	FAP 332	URBAN	40.218043	-87.638990	18.92	NB	DL	Dep (SN: 092-0205)	1.0	1.0							
13*	FAP 332	URBAN	40.217824	-87.639270	18.94	SB	DL	Appr (SN: 092-0205)		1.0							1.0
14*	FAP 332	URBAN	40.210601	-87.636469	19.46	NB	DL	SN: 092-8011					1.0	1.0			2.0
15*	FAP 332	URBAN	40.211992	-87.637484	19.35	SB	DL	SN: 092-8011					1.0	1.0			2.0
16	FAP 332	URBAN	40.123812	-87.635278	0.03	NB	DL	Dep (SN: 092-0036)						1.0			1.0
17*	FAP 332	URBAN	40.120402	-87.636229	26.07	SB	DL	Dep (SN: 092-0036)						1.0			1.0
18	FAP 332	URBAN	40.073335	-87.634785	29.34	NB	DL	N of Forrest St at Hegeler									
19	FAP 332	URBAN	40.073318	-87.634752	29.35	NB	DL	N of Forrest St at Hegeler									
20	FAP 332	URBAN	40.073095	-87.634738	29.36	NB	DL	N of Forrest St at Hegeler									
21	FAP 332	URBAN	40.073446	-87.634752	29.33	NB	DL	N of Forrest St at Hegeler									
22	FAP 332	URBAN	40.072811	-87.634735	29.39	NB	DL	N of Lete St at Hengeler									
23	FAP 332	URBAN	40.071989	-87.634785	29.43	NB	DL	S of Lete St at Hegeler									
24	FAP 332	URBAN	40.071581	-87.634872	29.46	NB	DL	S of Lete St at Hegeler									
25	FAP 332	URBAN	40.071480	-87.634900	29.47	NB	DL	S of Lete St at Hegeler									
26	FAP 729	URBAN	40.123667	-87.710998	0.04	EB	DL	Dep (SN: 092-0051)		1.0							
27	FAU 7052	URBAN	40.123407	-87.711976	0.61	WB	DL	Dep (SN: 092-0051)		1.0							
28	FAP 729	URBAN	40.126109	-87.666029	0.83	WB	DL	Dead end stop @ Withner Street									
29	FAP 729	URBAN	40.124301	-87.653229	3.14	EB	DL	E of Avenue "F"									
30*	FAP 729	URBAN	40.120030	-87.540213	9.73	SB	DL	N of I-74 WB On Ramp					1.0	1.0			2.0
SUB TOTALS =									3.0	2.0		26.0		26.0		3.0	2.0
RURAL TOTALS =												17.0		17.0		3.0	2.0
URBAN TOTALS =									3.0	2.0		9.0		9.0			
PROJECT TOTALS =									3.0	2.0		26.0		26.0		3.0	2.0

Notes:

*Guardrail plan quantities intended to match existing guardrail quantities.

Location 12: 12.5 ft of SPBG (Short Radius) shall connect to 37.5 ft of SPBG Type A adjacent to private entrance, Type 2 shall terminate.

Locations 16, and 17: 25 ft of SPBG connected to parapet wall shall remain in place.

Locations 28 and 39: See sign schedule for additional work.

MODEL: I:\MODEL\MMF5
 FILE: MMF5_Plan\Subcontractor\70DB89\CADD\DATA\CAD\Faces\0570DB89.rvt
 PROJECT: I:\PROJECTS\DOT\Office\Drawings\70DB89.rvt
 PROJECT: I:\PROJECTS\DOT\Office\Drawings\70DB89.rvt

USER NAME = eaglinga PLOT SCALE = 40,0000 * / in. PLOT DATE = 10/14/2021	DESIGNED - DRAWN - CHECKED - DATE -	REVISED - REVISED - REVISED - REVISED -	STATE OF ILLINOIS DEPARTMENT OF TRANSPORTATION	SCHEDULE OF QUANTITIES	F.A. RTE. SECTION COUNTY TOTAL SHEETS SHEET NO.
			SCALE:	SHEET 2 OF 4 SHEETS	STA. TO STA.
			ILLINOIS	VERMILION	10 7 CONTRACT NO. 70DB89

SCHEDULE OF QUANTITIES

(SHEET 3 OF 4)

EARTHWORK SCHEDULE

LOCATION	ROUTE	UREAN/ RURAL	LATITUDE	LONGITUDE	SLD STA	DIR	LANE	DESCRIPTION	20400800		25000210		25000400		25000500		25000600		25100115		28000250	
									FURNISHED EX		SEED CL 2A		NIT FERT NUT		PHOS FERT NUT		POT FERT NUT		MULCH METH 2		TEMP EROS CONT SEED	
									Appr	Dep	Appr	Dep	Appr	Dep	Appr	Dep	Appr	Dep	Appr	Dep	Appr	Dep
CU YD		ACRE		POUND		POUND		POUND		ACRE		POUND										
1	FAP 332	RURAL	40.302282	-87.658078	13.01	NB	DL	Appr (SN: 092-0198)	7.5		0.01		0.9		0.9		0.9		0.01		4.0	
2	FAP 332	RURAL	40.303251	-87.658301	12.94	SB	DL	Appr (SN: 092-0198)	7.5		0.01		0.9		0.9		0.9		0.01		4.0	
3	FAP 332	RURAL	40.265233	-87.651384	15.59	SB	DL	Appr (At Entrance)	7.5		0.01		0.9		0.9		0.9		0.01		4.0	
4	FAP 332	RURAL	40.265338	-87.651455	15.58	SB	DL	Dep (At Entrance)		7.5		0.01		0.9		0.9		0.9		0.01		4.0
5	FAP 332	RURAL	40.246221	-87.645920	16.94	NB	DL	SN: 092-2027	7.5	7.5	0.01	0.01	0.9	0.9	0.9	0.9	0.9	0.9	0.01	0.01	4.0	4.0
6	FAP 332	RURAL	40.246779	-87.646336	16.90	SB	DL	SN: 092-2027	7.5		0.01		0.9		0.9		0.9		0.01		4.0	
7	FAP 332	RURAL	40.239020	-87.644201	17.44	NB	DL	SN: 092-8304	7.5	7.5	0.01	0.01	0.9	0.9	0.9	0.9	0.9	0.9	0.01	0.01	4.0	4.0
8	FAP 332	RURAL	40.240757	-87.644766	17.32	SB	DL	SN: 092-8304	7.5	7.5	0.01	0.01	0.9	0.9	0.9	0.9	0.9	0.9	0.01	0.01	4.0	4.0
9	FAP 332	RURAL	40.225675	-87.640965	18.37	NB	DL	S of Seton Hill Rd	7.5	7.5	0.01	0.01	0.9	0.9	0.9	0.9	0.9	0.9	0.01	0.01	4.0	4.0
10	FAP 332	RURAL	40.223259	-87.640387	18.56	NB	DL	SN: 092-8010	7.5	7.5	0.01	0.01	0.9	0.9	0.9	0.9	0.9	0.9	0.01	0.01	4.0	4.0
11	FAP 332	RURAL	40.224358	-87.640827	18.48	SB	DL	SN: 092-8010	7.5	7.5	0.01	0.01	0.9	0.9	0.9	0.9	0.9	0.9	0.01	0.01	4.0	4.0
12	FAP 332	URBAN	40.218043	-87.638990	18.92	NB	DL	Dep (SN: 092-0205)														
13	FAP 332	URBAN	40.217824	-87.639270	18.94	SB	DL	Appr (SN: 092-0205)	7.5		0.01		0.9		0.9		0.9		0.01		4.0	
14	FAP 332	URBAN	40.210601	-87.636469	19.46	NB	DL	SN: 092-8011	7.5	7.5	0.01	0.01	0.9	0.9	0.9	0.9	0.9	0.9	0.01	0.01	4.0	4.0
15	FAP 332	URBAN	40.211992	-87.637484	19.35	SB	DL	SN: 092-8011	7.5	7.5	0.01	0.01	0.9	0.9	0.9	0.9	0.9	0.9	0.01	0.01	4.0	4.0
16	FAP 332	URBAN	40.123812	-87.635278	0.03	NB	DL	Dep (SN: 092-0036)														
17	FAP 332	URBAN	40.120402	-87.636229	26.07	SB	DL	Dep (SN: 092-0036)		7.5		0.01		0.9		0.9		0.9		0.01		4.0
18	FAP 332	URBAN	40.073335	-87.634785	29.34	NB	DL	N of Forrest St at Hegeler														
19	FAP 332	URBAN	40.073318	-87.634752	29.35	NB	DL	N of Forrest St St at Hegeler														
20	FAP 332	URBAN	40.073095	-87.634738	29.36	NB	DL	N of Forrest St at Hegeler														
21	FAP 332	URBAN	40.073446	-87.634752	29.33	NB	DL	N of Forrest St at Hegeler														
22	FAP 332	URBAN	40.072811	-87.634735	29.39	NB	DL	N of Lete St at Hegeler														
23	FAP 332	URBAN	40.071989	-87.634785	29.43	NB	DL	S of Lete St at Hegeler														
24	FAP 332	URBAN	40.071581	-87.634872	29.46	NB	DL	S of Lete St at Hegeler														
25	FAP 332	URBAN	40.071480	-87.634900	29.47	NB	DL	S of Lete St at Hegeler														
26	FAP 729	URBAN	40.123667	-87.710998	0.04	EB	DL	Dep (SN: 092-0051)														
27	FAU 7052	URBAN	40.123407	-87.711976	0.61	WB	DL	Dep (SN: 092-0051)														
28	FAP 729	URBAN	40.126109	-87.666029	0.83	WB	DL	Dead end stop @ Withner Street														
29	FAP 729	URBAN	40.124301	-87.653229	3.14	EB	DL	E of Avenue "F"														
30	FAP 729	URBAN	40.120030	-87.540213	9.73	SB	DL	N of I-74 WB On Ramp	7.5	7.5	0.01	0.01	0.9	0.9	0.9	0.9	0.9	0.9	0.01	0.01	4.0	4.0
SUB TOTALS =									195.0		0.3		23.4		23.4		23.4		0.3		104.0	
RURAL TOTALS =									127.5		0.2		15.3		15.3		15.3		0.2		68.0	
URBAN TOTALS =									67.5		0.1		8.1		8.1		8.1		0.1		36.0	
PROJECT TOTALS =									195.0		0.3		23.4		23.4		23.4		0.3		104.0	
RURAL TOTALS ROUNDED =									130.0		0.25		16.0		16.0		16.0		0.25		68.0	
URBAN TOTALS ROUNDED =									70.0		0.25		9.0		9.0		9.0		0.25		36.0	
PROJECT TOTALS ROUNDED =									200.0		0.50		25.0		25.0		25.0		0.50		104.0	

MODEL: \\MODEL\MHFS
 FILE: \\MAILS_PUB\Public\paw_becadefy.com\FW\DOT\Documents\DOT_Offices\Dir\drct_5\Project\05700989\CADD\Drawings\CD\Process\05700989\p1-cs-schedule.dgn

USER NAME = eaglinga	DESIGNED -	REVISED -
	DRAWN -	REVISED -
PLOT SCALE = 40,0000 * / in.	CHECKED -	REVISED -
PLOT DATE = 10/14/2021	DATE -	REVISED -

**STATE OF ILLINOIS
DEPARTMENT OF TRANSPORTATION**

SCHEDULE OF QUANTITIES

SCALE: SHEET 3 OF 4 SHEETS STA. TO STA.

F.A. RTE.	SECTION	COUNTY	TOTAL SHEETS	SHEET NO.
VAR	D5 HSIP GR 2020-1	VERMILION	10	8
ILLINOIS FED. AID PROJECT			CONTRACT NO. 70D89	

SCHEDULE OF QUANTITIES

(SHEET 4 OF 4)

SIGN AND POST SCHEDULE

LOCATION	ROUTE	URBAN/ RURAL	LATITUDE	LONGITUDE	SLD STA	DIR	LANE	DESCRIPTION	SIGN TYPE	X0326696
										SIGN AND POST EACH
28	FAP 729	URBAN	40.126109	-87.666029	0.83	EB	DL	Dead end stop @ Withner Street	W 1-7 Two-Direction Large Arrow Sign	1.0
29	FAP 729	URBAN	40.124301	-87.653229	3.14	EB	DL	E of Avenue "F"	W 1-6 One-Direction Large Arrow Sign	1.0
										RURAL TOTAL =
										0.0
										URBAN TOTAL =
										2.0
										PROJECT TOTAL =
										2.0

MODEL: \\MODEL\MAME
 FILE: MAME: \\MAME\paw\ibc\paw\bea\by.com\FW\DOT\Documents\DOT\Office\Dir\dir: S:\Project\0570089\CAD\data\CAD\Process\0570089\st-schedule.qxd

USER NAME = eaglinga	DESIGNED -	REVISED -
	DRAWN -	REVISED -
PLOT SCALE = 40,0000 * / in.	CHECKED -	REVISED -
PLOT DATE = 10/14/2021	DATE -	REVISED -

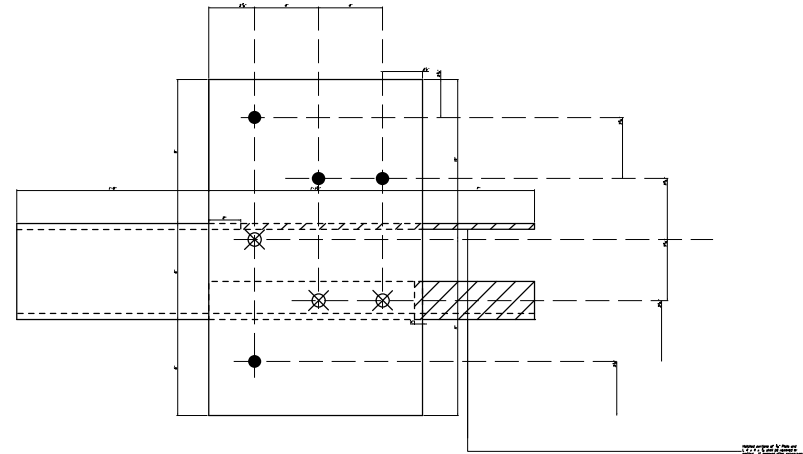
**STATE OF ILLINOIS
DEPARTMENT OF TRANSPORTATION**

SCHEDULE OF QUANTITIES

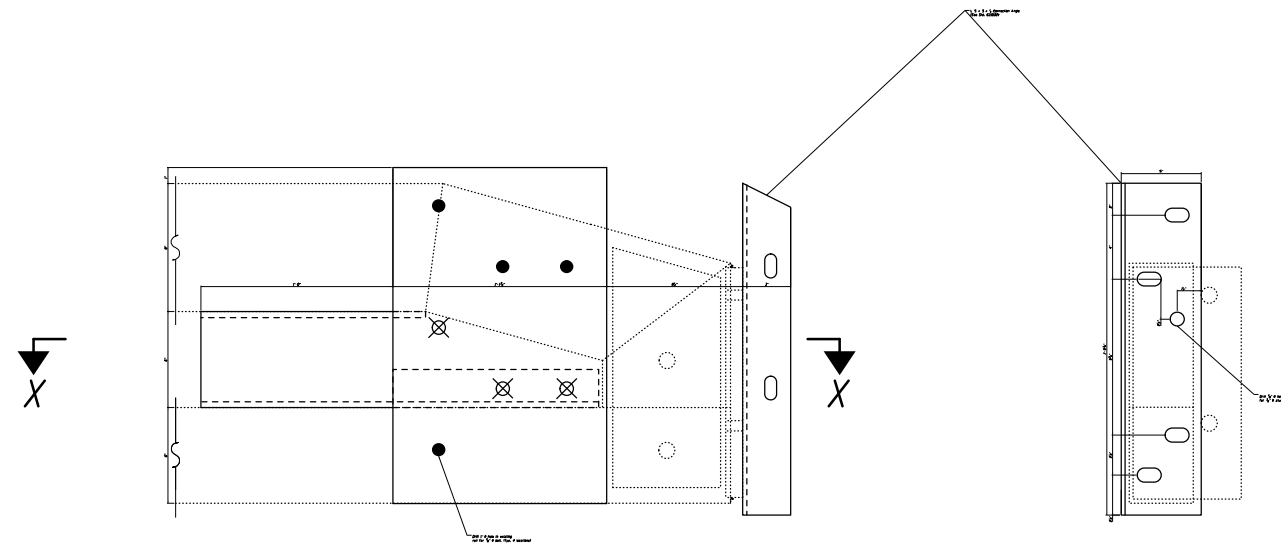
SCALE: SHEET 4 OF 4 SHEETS STA. TO STA.

F.A. RTE.	SECTION	COUNTY	TOTAL SHEETS	SHEET NO.
VAR	D5 HSIP GR 2020-1	VERMILION	10	9
CONTRACT NO. 70DB9				
ILLINOIS FED. AID PROJECT				

OPTION 1

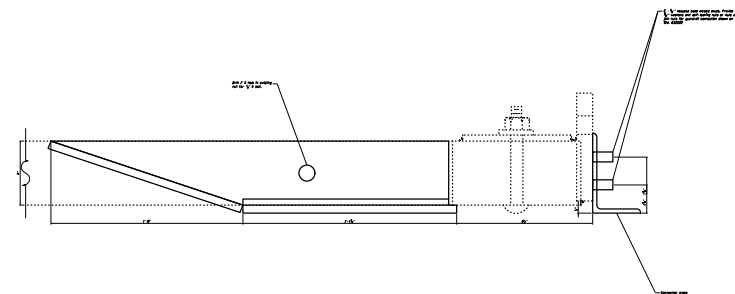


GUARDRAIL CONNECTION PLATE ASSEMBLY



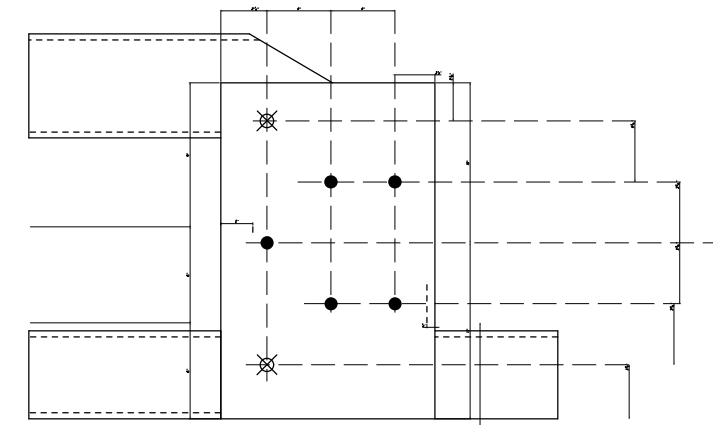
END OF RAIL DETAILS

END VIEW

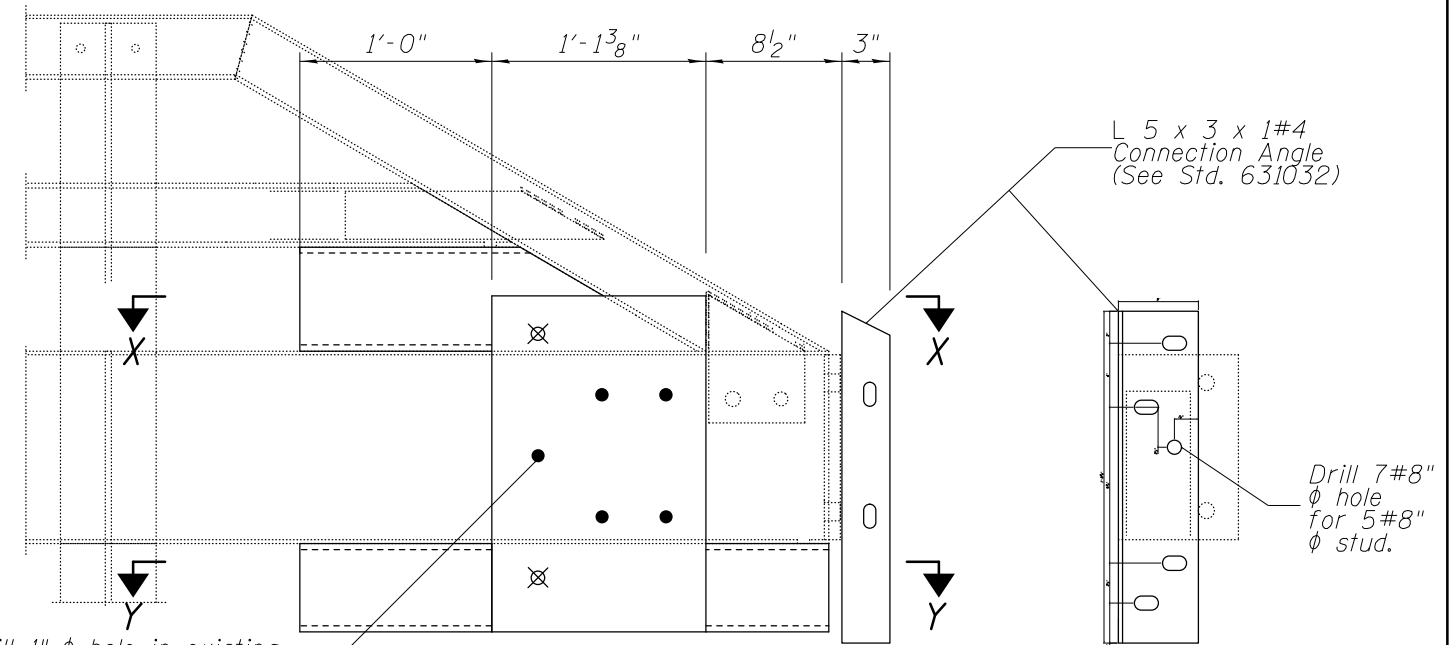


SECTION X-X

OPTION 2



GUARDRAIL CONNECTION PLATE ASSEMBLY

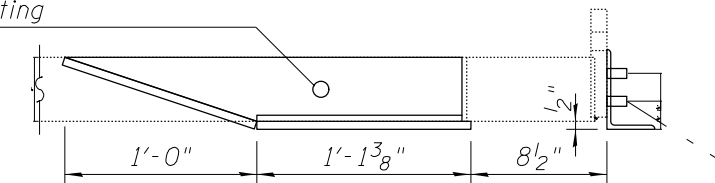


Drill 1" ϕ hole in existing rail for 7/8" ϕ bolt. (Typ. 5 locations)

END OF RAIL DETAILS

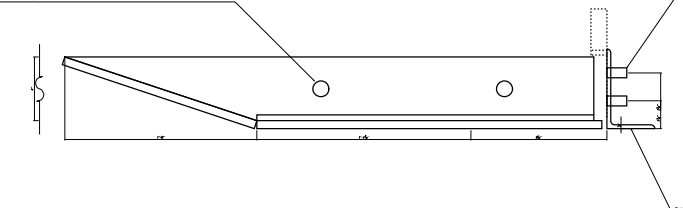
END VIEW

Drill 1" ϕ hole in existing rail for 7/8" ϕ bolt.



SECTION X-X

Drill 1" ϕ hole in existing rail for 7/8" ϕ bolt.



SECTION Y-Y

ϕ - 5#8" reduced base welded studs. Provide 4 - 5#8" washers and self-locking nuts or nuts and jam nuts for guardrail connection shown on Std. 631032

FILE NAME =	USER NAME = eeglino	DESIGNED -	REVISED -
p:\1\1dot-pw.bentley.com\PWIDOT\Documents\IDOT Offices\District 5\Projects\D570D89\CDRAWING\ASheets\D570D89-sht-details.dgn		DRAWN -	REVISED -
\$MODELNAME\$	PLOT SCALE = 2.0000' / in.	CHECKED -	REVISED -
	PLOT DATE = 10/14/2021	DATE -	REVISED -

**STATE OF ILLINOIS
DEPARTMENT OF TRANSPORTATION**

**TRAFFIC BARRIER TERMINAL TYPE 6A
(MODIFIED) MOUNTING DETAILS**

SCALE: SHEET 1 OF 1 SHEETS STA. TO STA.

F.A. RTE.	SECTION	COUNTY	TOTAL SHEETS	SHEET NO.
VAR	D5 HSIP GR 2020-1	VERMILION	10	10
CONTRACT NO. 70D89				
ILLINOIS FED. AID PROJECT				