

STATE OF ILLINOIS
DEPARTMENT OF TRANSPORTATION

F.A.P.	SECTION	COUNTY	TOTAL SHEETS	SHEET NO.
42	(110,111,112,113)CJS-1	BOND	7	1
ILLINOIS		CONTRACT NO. 76P21		

FOR INDEX OF SHEETS, SEE SHEET NO. 2

BRIDGE OMISSION

STRUCTURE NO.	LENGTH
003-0049	140 FT.

TRAFFIC DATA

LOCATION	SALE BARN AVE. TO AIRPORT AVE.
2020 ADT	3400 (ESTIMATED)
2040 ADT	3900 (ESTIMATED)
MU%	9.7
SU%	6.1

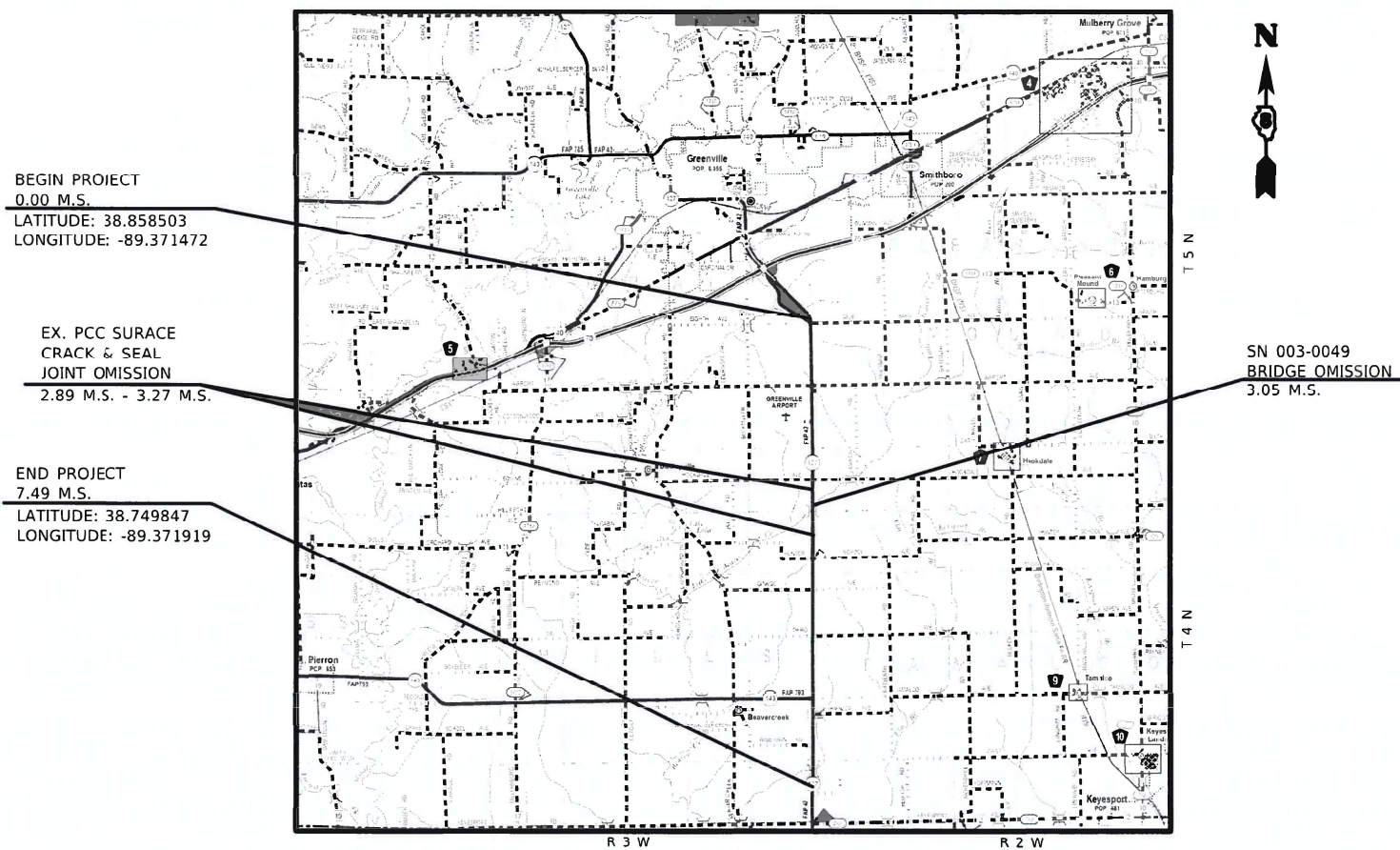
LOCATION	AIRPORT AVE. TO TAMALCO AVE.
2020 ADT	2900 (ESTIMATED)
2040 ADT	3300 (ESTIMATED)
MU%	11.4
SU%	4.6

LOCATION	TAMALCO AVE. TO KEYSPORT RD.
2020 ADT	3300 (ESTIMATED)
2040 ADT	3800 (ESTIMATED)
MU%	9.2
SU%	4.0

PROPOSED HIGHWAY PLANS

FAP ROUTE 42 (IL 127)
SECTION (110,111,112,113)CJS-1
CRACK & JOINT SEALING
BOND COUNTY

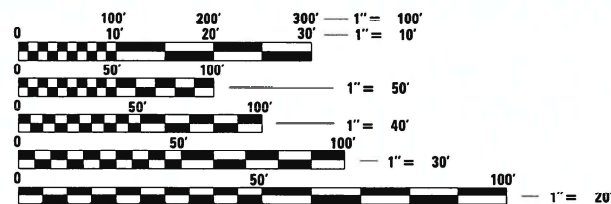
C-98-057-21



LOCATION MAP

GROSS LENGTH = 39,547.0 FT. = 7.49 MILE
NET LENGTH = 37,540.6 FT. = 7.11 MILE

NOT TO SCALE



FULL SIZE PLANS HAVE BEEN PREPARED USING STANDARD ENGINEERING SCALES. REDUCED SIZED PLANS WILL NOT CONFORM TO STANDARD SCALES. IN MAKING MEASUREMENTS ON REDUCED PLANS, THE ABOVE SCALES MAY BE USED.

J.U.L.I.E.
JOINT UTILITY LOCATION INFORMATION FOR EXCAVATORS
1-800-892-0123
OR 811

PROJECT ENGINEER: BILLIE OWEN (618)346-3209
PROJECT MANAGER: PHILLIP FREIMUTH (618)346-3194

CONTRACT NO. 76P21

STATE OF ILLINOIS
DEPARTMENT OF TRANSPORTATION

SUBMITTED *Oct 22, 2021*
Keith Roberts
REGIONAL ENGINEER

December 10, 2021
[Signature]
ENGINEER OF DESIGN AND ENVIRONMENT

December 10, 2021
[Signature]
DIRECTOR OF HIGHWAYS PROJECT IMPLEMENTATION

PRINTED BY THE AUTHORITY
OF THE STATE OF ILLINOIS

INDEX OF SHEETS

1. COVER
2. INDEX OF SHEETS, HIGHWAY STANDARDS, GENERAL NOTES & COMMITMENTS
3. SUMMARY OF QUANTITIES
4. LOCATION MAP
5. EXISTING TYPICAL SECTIONS
6. SCHEDULE OF QUANTITIES
7. CRACK AND JOINT SEALING DETAILS

HIGHWAY STANDARDS

000001-08	STANDARD SYMBOLS, ABBREVIATIONS AND PATTERNS
001006	DECIMAL OF AN INCH AND OF A FOOT
701001-02	OFF-RD OPERATIONS, 2L, 2W, MORE THAN 15' (4.5m) AWAY
701006-05	OFF-RD OPERATIONS, 2L, 2W, 15' (4.5M) TO 24" (600MM) FROM PAVEMENT EDGE
701301-04	LANE CLOSURE, 2L, 2W SHORT TERM OPERATIONS
701306-04	LANE CLOSURE, 2L, 2W, SLOW MOVING OPERATIONS DAY ONLY, FOR SPEEDS ≥ 45 MPH
701311-03	LANE CLOSURE, 2L, 2W, SLOW MOVING OPERATIONS - DAY ONLY
701901-08	TRAFFIC CONTROL DEVICES
780001-05	TYPICAL PAVEMENT MARKINGS

GENERAL NOTES

1. UTILITIES KNOWN TO HAVE FACILITIES WITHIN THE PROJECT AREA ARE AS FOLLOWS:

UTILITY	ABOVE GROUND	BELOW GROUND
AMEREN ILLINOIS - (GAS & ELECTRIC)	X	X
AT&T ILLINOIS (COMMUNICATIONS)	X	
BOND MADISON WATER COMPANY (WATER)		X
ENABLE MIDSTREAMS PARTNER - (SANITARY SEWER)		X
FRONTIER COMMUNICATIONS (COMMUNICATIONS)	X	X
CITY OF GREENVILLE (WATER & SANITARY SEWER)		X
MARATHON PIPE LINE LLC (PIPELINE)		X
PLAINES MARKETING, LP (PIPELINE)		X
SOUTHWESTERN ELECTRIC COOPERATIVE, INC. (ELECTRIC)	X	X
TC ENERGY (PIPELINE)		X

2. NO SURVEY WAS PERFORMED FOR THIS PROJECT AND THE PLANS WERE CREATED USING MICROFILM AND FIELD MEASUREMENTS.
3. ALL TURF AREAS DISTURBED BY THE CONTRACTOR SHALL BE SEEDED WITH THE APPROPRIATE EROSION CONTROL AS DIRECTED BY THE ENGINEER AT THE CONTRACTOR'S EXPENSE.
4. ANY RAISED REFLECTIVE PAVEMENT MARKERS ENCOUNTERED SHALL BE LEFT IN PLACE. ROUTING SHALL BE GAPPED WHERE RAISED REFLECTIVE PAVEMENT MARKERS ARE ENCOUNTERED SO AS TO LEAVE THEM FUNCTIONAL.
5. THE RESIDENT ENGINEER/TECHNICIAN SHALL DETERMINE THE EXACT LOCATION WHERE CRACKS ARE TO BE ROUTED AND FILLED.
6. ESTIMATED CRACK FILLING APPLICATION RATE IS 0.40 LB/FT.
7. CONCRETE SECTIONS WILL NOT BE TREATED FOR CRACK AND JOINT SEAL.
8. QUANTITIES OF PAINT PAVEMENT MARKING 4" YELLOW - 23385 FT, 4" WHITE - 760 FT AND LETTERS AND SYMBOLS - 31.2 SQ FT (2 @ 15.6 SQ FT) HAVE BEEN ESTIMATED FOR DAMAGE OF CENTERLINE, EDGELINE AND LEFT-TURN LANE ARROWS.
9. ALL PROPOSED PAVEMENT MARKING SHALL BE PLACED IN THE SAME LOCATION AS EXISTING AS DIRECTED BY THE ENGINEER.
10. ALL STRUCTURES ARE OMITTED FROM THIS CONTRACT.
11. NO OVERNIGHT LANE CLOSURES WILL BE ALLOWED ON THIS PROJECT.
12. CHANGEABLE MESSAGE SIGNS ARE INCLUDED TO BE PLACED AT BOTH ENDS OF THE PROJECT 7 DAYS PRIOR TO CONSTRUCTION AS DIRECTED BY THE ENGINEER.

COMMITMENTS

NONE

MODEL: #MODELNAME\$
 FILE NAME: P:\GIS\Draw Bentley.com\FW\DOT\Documents\DOT Offices\District 8\Projects\0876P21\CAD\Drawings\CAD\Drawings\0876P21-1-1-1.dgn

REV. - MS

USER NAME = murrayda	DESIGNED - _____	REVISED - _____	STATE OF ILLINOIS DEPARTMENT OF TRANSPORTATION	INDEX OF SHEETS, HIGHWAY STANDARDS GENERAL NOTES & COMMITMENTS	F.A.P.	SECTION	COUNTY	TOTAL SHEETS	SHEET NO.
DRAWN - _____	REVISED - _____	42			(110,111,112,113)CJ5-1	BOND	7	2	
PLOT SCALE = 100.2375' / in.	CHECKED - _____	REVISED - _____			CONTRACT NO. 76P21				
PLOT DATE = 10/19/2021	DATE - _____	REVISED - _____			ILLINOIS FED. AID PROJECT				
				SCALE: _____	SHEET 1	OF 1	SHEETS	STA. _____	TO STA. _____

CRACK AND JOINT SEAL SCHEDULE

MILE STATION TO MILE STATION			CENTERLINE CRACK	EDGELINE CRACK	LONGITUDINAL CRACK	TRANSVERSE CRACKS	CRACK ROUTING	CRACK FILLING
			FOOT	FOOT	FOOT	FOOT	FOOT	POUND
0.00	-	2.89	15259		3052	4860	23171	9268
3.27	-	3.65	2006				2006	803
3.65	-	7.35	19499		1949	7992	29440	11776
7.35	-	7.49	760	760	304	108	1932	773
SUBTOTAL:							56549	22619
SUBTOTAL(20%):							11309	4523
TOTAL:							67858	27142

NOTE: 2.89 M.S. TO 3.27 M.S. INCLUDES CONCRETE AND BRIDGE OMISSION

MODEL: \\MODEL\MAME
 FILE NAME: \\pub\caw\bea\by.com\FW\DOT\Documents\DOT Office\Dir\dr. 8\Project\087621\CAD\Draws\CAD\checkst\087621_caw\ba.dwg

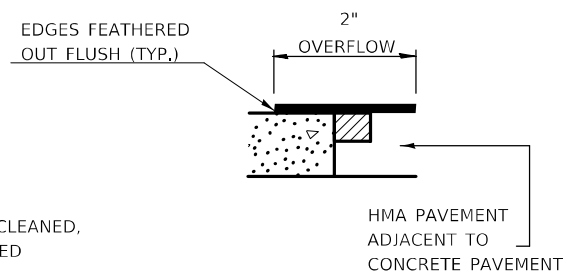
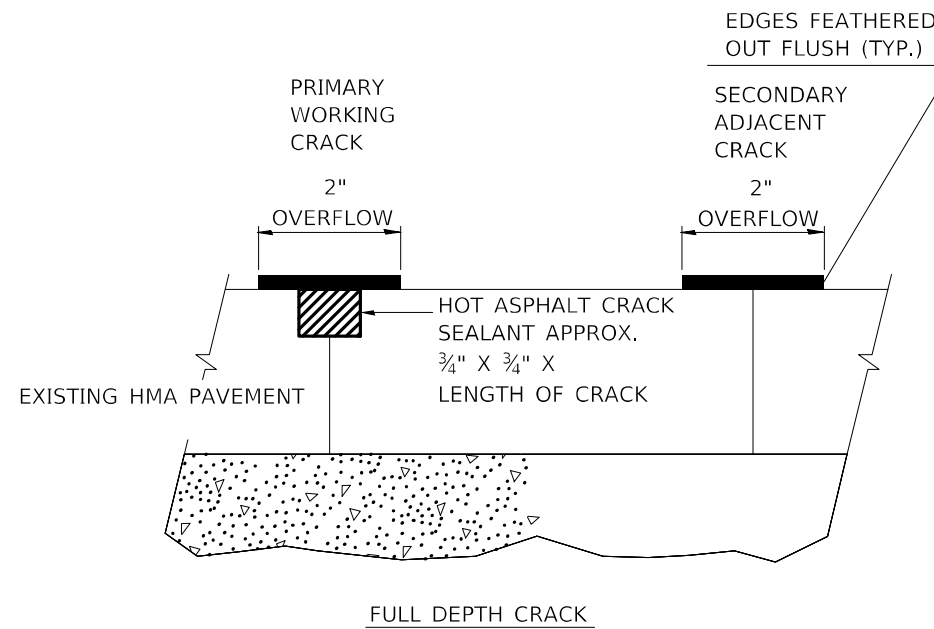
USER NAME = murrayda	DESIGNED - _____	REVISED - _____
	DRAWN - _____	REVISED - _____
PLOT SCALE = 100.2375' / in.	CHECKED - _____	REVISED - _____
PLOT DATE = 10/19/2021	DATE - _____	REVISED - _____


**STATE OF ILLINOIS
DEPARTMENT OF TRANSPORTATION**

SCHEDULE OF QUANTITIES

SCALE: _____ SHEET 1 OF 1 SHEETS STA. _____ TO STA. _____

F.A.P.	SECTION	COUNTY	TOTAL SHEETS	SHEET NO.
42	(110,111,112,113)CJS-1	BOND	7	6
CONTRACT NO. 76P21				
ILLINOIS FED. AID PROJECT				



 ROUTED, CLEANED, AND SEALED

CRACK & JOINT SEALING DETAILS
NOT TO SCALE

MODEL: I:\MODEL\MRF5
FILE NAME: p:\pub\cra\bea\pav.com\FW\DOT\Documents\DOT_office\Dir\dir_8\Project\087621\CAD\data\CAD\sheet\087621_cra_ba.dgn

USER NAME = murrayda	DESIGNED - _____	REVISED - _____
	DRAWN - _____	REVISED - _____
PLOT SCALE = 100,2375' / in.	CHECKED - _____	REVISED - _____
PLOT DATE = 10/19/2021	DATE - _____	REVISED - _____

**STATE OF ILLINOIS
DEPARTMENT OF TRANSPORTATION**

CRACK AND JOINT SEALING DETAILS

SCALE: _____ SHEET 1 OF 1 SHEETS STA. _____ TO STA. _____

F.A.P.	SECTION	COUNTY	TOTAL SHEETS	SHEET NO.
42	(110,111,112,113)CJ5-1	BOND	7	7
CONTRACT NO. 76P21				
ILLINOIS FED. AID PROJECT				