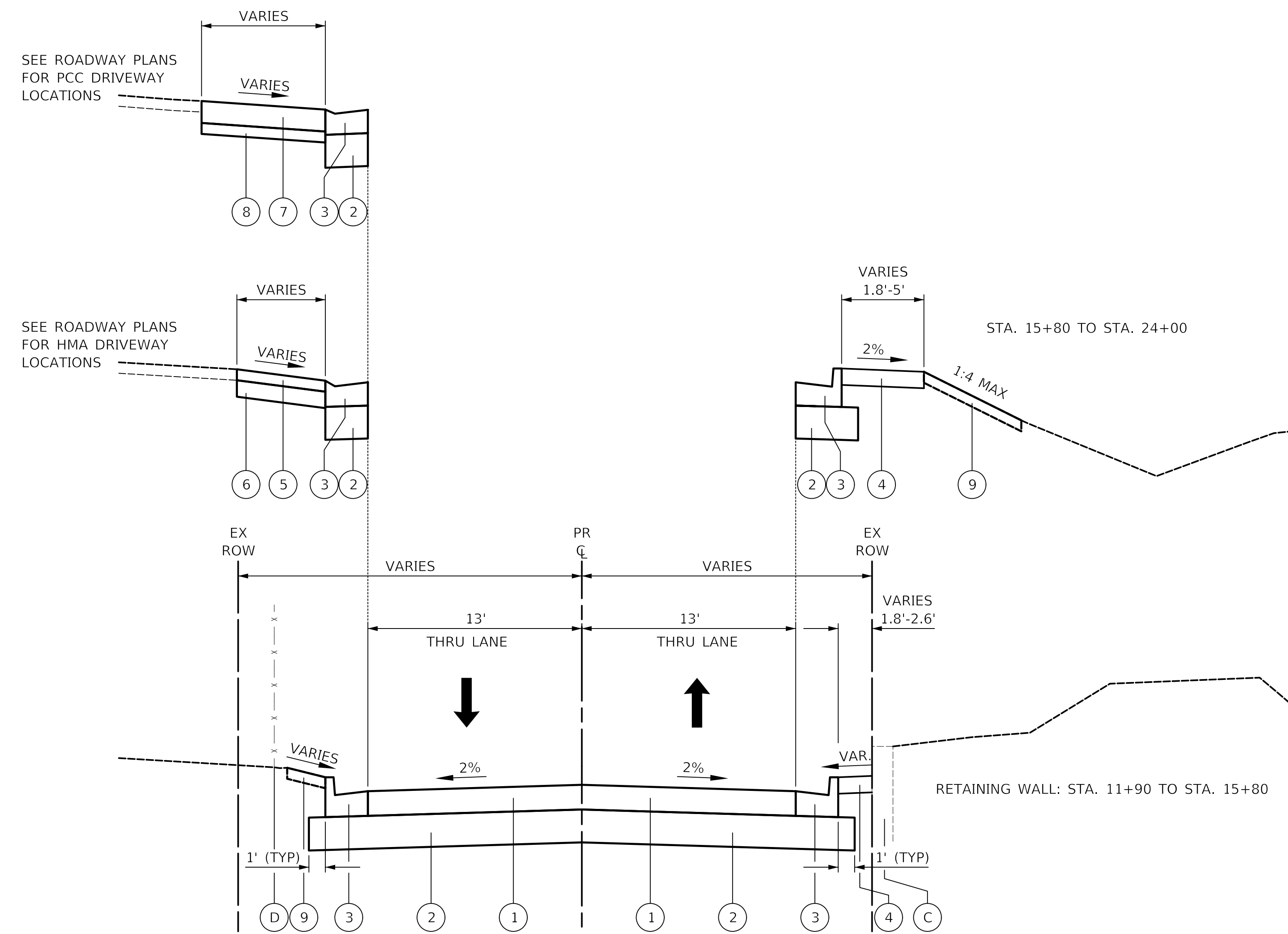


PROVISO DRIVE - PROPOSED TYPICAL SECTION

STA. 24+00 TO STA. 35+50

LEGEND

- ⊖ EXISTING RETAINING WALL
- ⊖ EXISTING FENCE
- ① PORTLAND CEMENT CONCRETE PAVEMENT 8 1/2" (JOINTED)
- ② AGGREGATE SUBGRADE IMPROVEMENT 12"
- ③ COMBINATION CONCRETE CURB AND GUTTER, TYPE B-6.24
- ④ AGGREGATE SHOULDERS, TYPE B 6"
- ⑤ HOT-MIX ASPHALT DRIVEWAY PAVEMENT, 3"
- ⑥ AGGREGATE BASE COURSE, TYPE B 6"
- ⑦ PORTLAND CEMENT CONCRETE DRIVEWAY PAVEMENT, 8"
- ⑧ AGGREGATE BASE COURSE, TYPE B 4"
- ⑨ TOPSOIL FURNISH AND PLACE, 4" SODDING OR SEEDING, CLASS 2A
- ⊖ GEOTECHNICAL FABRIC FOR GROUND STABILIZATION



PROVISO DRIVE - PROPOSED TYPICAL SECTION

STA. 11+90 TO STA. 24+00

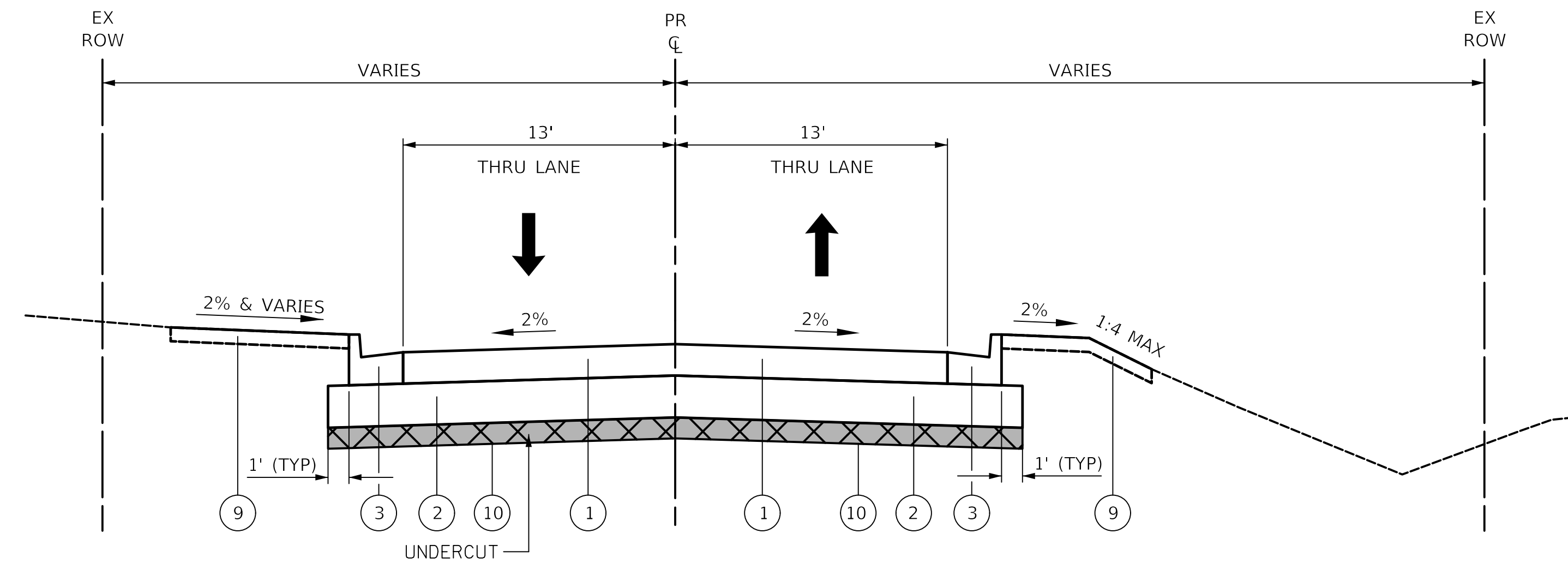
SEE ROADWAY PLANS FOR PCC DRIVEWAY LOCATIONS

SEE ROADWAY PLANS FOR HMA DRIVEWAY LOCATIONS

HOT-MIX ASPHALT MIXTURE REQUIREMENTS		
MIXTURE TYPE	AIR VOIDS @ NDES	QMP
PROPOSED HOT-MIX ASPHALT DRIVEWAY PAVEMENT 3"		
HOT-MIX ASPHALT SURFACE COURSE, MIX "D", N50 (IL 9.5 mm); 3" (IN 2 LIFTS)	4% @ 50 GYR.	LR-1030-2
TEMPORARY PAVEMENT		
HOT-MIX ASPHALT SURFACE COURSE, IL-9.5, MIX "D", N70; 2"	4% @ 70 GYR.	LR-1030-2
HOT-MIX ASPHALT BINDER COURSE, IL-19.0, N70; 8"	4% @ 70 GYR.	LR-1030-2
CLASS D PATCHES		
CLASS D PATCH (HMA BINDER IL-19.0 mm)	4% @ 70 GYR.	LR-1030-2
QMP DESIGNATION: QUALITY CONTROL/QUALITY ASSURANCE (QC/QA)		

NOTES:

- THE UNIT WEIGHT TO CALCULATE ALL HOT-MIX ASPHALT SURFACE MIXTURES IS 112 LB/SY-IN.
- THE "AC TYPE" FOR POLYMERIZED HMA MIXES SHALL BE "SBS/SBR PG 76-22" AND FOR NON-POLYMERIZED HMA THE "AC-TYPE" SHALL BE "PG 64-22" UNLESS MODIFIED BY RECLAIMED MATERIALS SPECIFICATIONS.
- PC CONCRETE TEMPORARY PAVEMENT SHALL CONSIST OF CLASS PV CONCRETE MEETING THE REQUIREMENTS OF ARTICLE 1020 OF THE STANDARD SPECIFICATIONS, PCC PAVEMENT 6" THICK. TEMPORARY PCC PAVEMENT DOES NOT REQUIRE DOWEL BARS.



PROVISO DRIVE - PROPOSED TYPICAL SECTION

STA. 35+50 TO STA. 38+50

NOTE: TRANSVERSE PIPE UNDERDRAINS SHALL BE PROVIDED AT THE LOCATIONS SHOWN ON THE DRAINAGE AND UTILITY PLANS AND AS DIRECTED BY THE ENGINEER.

PLOT DRIVER = #PLOTDRVL\$
PEN TABLE = #PENITBL\$
FILE NAME = ...3428-shr-typicoa102.dgn



USER NAME = nem	DESIGNED - NEM	REVISED - 01/07/22
PLOT SCALE = 1:8000' / in.	DRAWN - NEM	REVISED -
PLOT DATE = 1/7/2022	CHECKED - DNM	REVISED -
	DATE - \$DATE	REVISED -

STATE OF ILLINOIS
DEPARTMENT OF TRANSPORTATION

PROVISO DRIVE PROPOSED TYPICAL SECTIONS			
SCALE:	SHEET 1 OF 1 SHEETS	STA.	TO STA.

F.A.U. RTE.	SECTION	COUNTY	TOTAL SHEETS	SHEET NO.
1014	18-00035-00-PV	COOK	82	11
CONTRACT NO. 61G71			ILLINOIS FED. AID PROJECT	