

STATE OF ILLINOIS
DEPARTMENT OF TRANSPORTATION

F.A. RTE.	SECTION	COUNTY	TOTAL SHEETS	SHEET NO.
*	D7 PATCHING 2022-2	MACON	8	1
		ILLINOIS	CONTRACT NO. 74A77	

* F.A.P 712, F.A.U. 7464

FOR INDEX OF SHEETS, SEE SHEET NO. 2

ADT = 10,200 (2019)

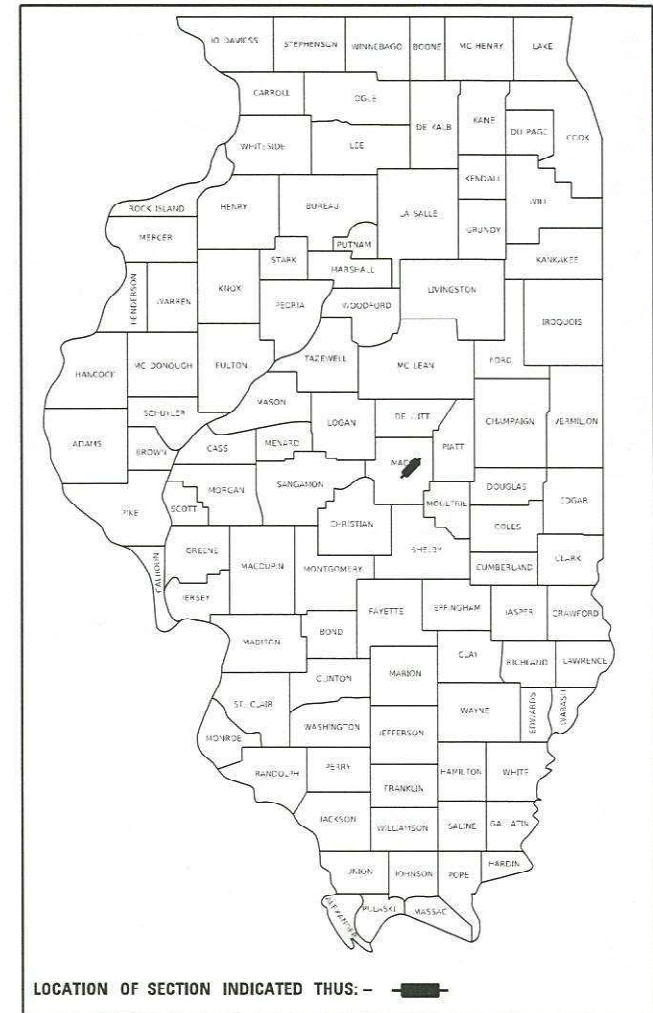
D-97-108-21

PROPOSED HIGHWAY PLANS

F.A.P ROUTE 712, F.A.U. ROUTE 7464 (IL 48)
SECTION D7 PATCHING 2022-2

CLASS A PATCHING
MACON COUNTY

C-97-177-21

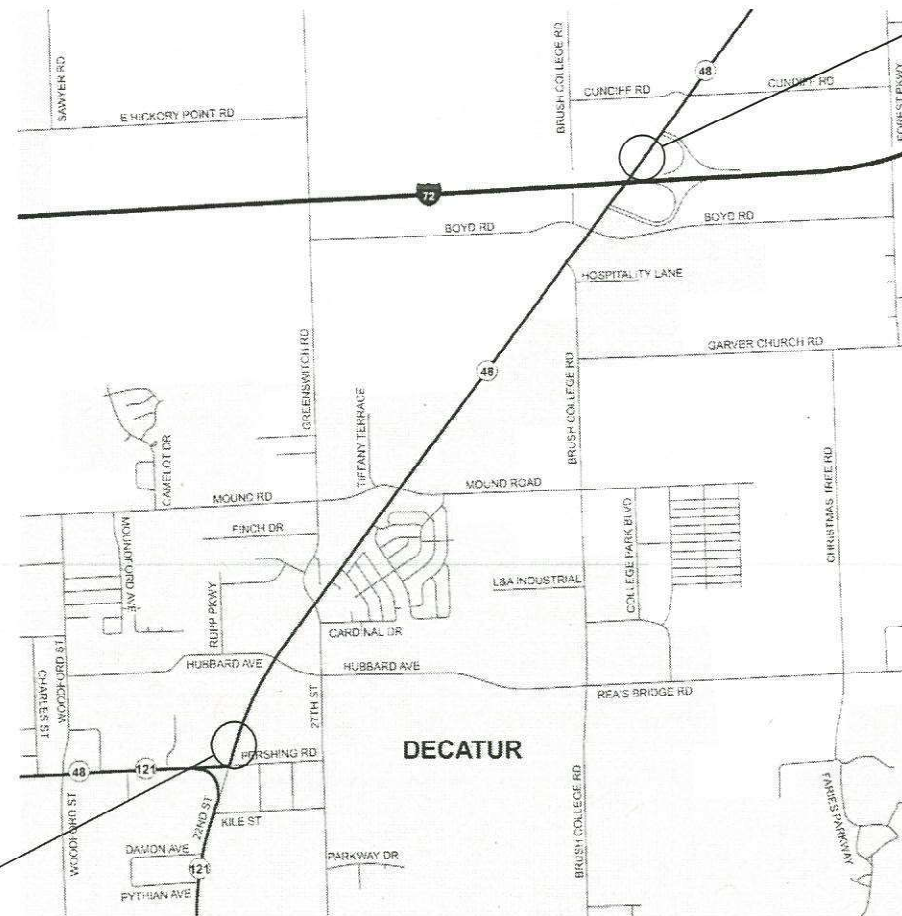


STATION EQUATIONS:

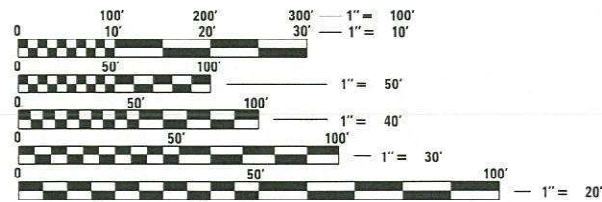
STA. 202 + 86.71 (BK) = STA. 126 + 96.71 (AH)

STA. 208 + 77.88 (BK) = STA. 28 + 06.10 (AH)

PROJECT ENDS:
STA. 56 + 50



PROJECT BEGINS:
STA. 161 + 00



FULL SIZE PLANS HAVE BEEN PREPARED USING STANDARD ENGINEERING SCALES. REDUCED SIZED PLANS WILL NOT CONFORM TO STANDARD SCALES. IN MAKING MEASUREMENTS ON REDUCED PLANS, THE ABOVE SCALES MAY BE USED.

J.U.L.I.E.
JOINT UTILITY LOCATION INFORMATION FOR EXCAVATORS
1-800-892-0123
OR 811

PROJECT ENGINEER: DEBRA BARRETT
PROJECT MANAGER: JACQUELYN SEALS
PHONE: 217-342-8248
CONTRACT NO. 74A77

GROSS LENGTH = 15,211.78 FT. = 2.88 MILE
NET LENGTH = 15,211.78 FT. = 2.88 MILE

STATE OF ILLINOIS
DEPARTMENT OF TRANSPORTATION

SUBMITTED NOVEMBER 4 20 21
Jeffrey P. Myrland
REGIONAL ENGINEER

December 10 20 21
[Signature]
ENGINEER OF DESIGN AND ENVIRONMENT

December 10 20 21
Stephen M. Fair
DIRECTOR OF HIGHWAYS PROJECT IMPLEMENTATION

PRINTED BY THE AUTHORITY
OF THE STATE OF ILLINOIS

INDEX OF SHEETS

GENERAL NOTES

THIS PROJECT IS LOCATED ON ILL 48 FROM 0.1 MI NORTH OF I-72 TO PERSHING ROAD IN DECATUR IN MACON COUNTY. THE WORK INCLUDED IN SECTION D7 PATCHING 2022-2 CONSISTS OF PAVEMENT PATCHING, TRAFFIC CONTROL, AND ANY OTHER WORK NECESSARY TO COMPLETE THIS PROJECT.

THE ACTUAL LOCATIONS OF PAVEMENT PATCHING AND FINAL QUANTITIES SHALL BE DETERMINED BY THE ENGINEER IN THE FIELD.

PATCHING REINFORCEMENT AND ALL TIE BARS WILL BE #6 REBAR.

THE COST OF RAISED REFLECTIVE PAVEMENT MARKER REMOVAL IS INCLUDED IN THE COST OF CLASS A PATCHING (SPECIAL), TYPE I-IV, 11"-13".

DETECTOR LOOPS REMOVED OR DAMAGED DUE TO PATCHING WILL BE REPLACED IN KIND AND PAID FOR AS DETECTOR LOOP, TYPE I. SAW CUTS WILL BE INCLUDED IN THE COST.

SHEET NO. ITEM

1	COVER SHEET
2	GENERAL NOTES, INDEX OF SHEETS & LIST OF STANDARDS
3	SUMMARY OF QUANTITIES
4-5	PATCHING SCHEDULES
6-7	CLASS A PATCHES (SPECIAL) DETAILS
8	DISTRICT 7 DETECTOR LOOP DETAIL

THE FOLLOWING STANDARDS ARE A PART OF THESE PLANS AND ARE INCLUDED AFTER SHEET NO. 8:

STANDARD NO. DESCRIPTION

000001-08	STANDARD SYMBOLS, ABBREVIATIONS AND PATTERNS
001001-02	AREAS OF REINFORCEMENT BARS
001006	DECIMAL OF AN INCH AND OF A FOOT
420001-10	PAVEMENT JOINTS
442001-04	CLASS A PATCHES
701101-05	OFF-ROAD OPERATIONS, MULTILANE, 15' (4.5M) TO 24" (600MM) FROM PAVEMENT EDGE
701106-02	OFF-ROAD OPERATIONS, MULTILANE, MORE THAN 15' (4.5 M) AWAY
701601-09	URBAN LANE CLOSURE, MULTILANE, 1W OR 2W WITH NONTRAVERSABLE MEDIAN
701701-10	URBAN LANE CLOSURE, MULTILANE INTERSECTION
701901-08	TRAFFIC CONTROL DEVICES
886001-01	DETECTOR LOOP INSTALLATIONS
886006-01	TYPICAL LAYOUTS FOR DETECTION LOOPS
420701-03	PAVEMENT WELDED WIRE REINFORCEMENT

MODEL: Default
 FILE: Macos:prj\illscsw_bentley.com\PROJECTS\Documents\DOT_Offices\District_7\Projects\74A77\CADD\39\CAD\Sheets\074A77-5b-genote.dgn

REV. - MS

* F.A.P 712, F.A.U. 7464

	USER NAME = steffenmk	DESIGNED -	REVISED -	STATE OF ILLINOIS DEPARTMENT OF TRANSPORTATION	INDEX OF SHEETS & GENERAL NOTES	F.A. RTE.	SECTION	COUNTY	TOTAL SHEETS	SHEET NO.
		DRAWN -	REVISED -			*	D7 PATCHING 2022-2	MACON	8	2
	PLOT SCALE = 100.0000' / in.	CHECKED -	REVISED -							
	PLOT DATE = 11/4/2021	DATE -	REVISED -		SCALE:					
					SHEET	OF	SHEETS	STA.	TO	STA.
										ILLINOIS STATE ONLY PROJECT

100% STATE
URBAN

100% STATE
URBAN

SUMMARY OF QUANTITIES			TOTAL QUANTITIES	CONSTRUCTION TYPE CODE		
CODE NO	ITEM	UNIT		0006		
44213000	PATCHING REINFORCEMENT	SO YD	2099.8	2099.8		
44213200	SAW CUTS	FOOT	6060	6060		
44213204	TIE BARS 3/4"	EACH	381	381		
67100100	MOBILIZATION	L SUM	1	1		
70102630	TRAFFIC CONTROL AND PROTECTION, STANDARD	L SUM	1	1		
	701601					
70102635	TRAFFIC CONTROL AND PROTECTION, STANDARD	L SUM	1	1		
	701701					
70107025	CHANGEABLE MESSAGE SIGN	CAL DA	28	28		
* 88600100	DETECTOR LOOP, TYPE I	FOOT	183	183		
X1700054	CLASS A PATCHES, TYPE I, 13 INCH (SPECIAL)	SO YD	8	8		
X1700055	CLASS A PATCHES, TYPE II, 13 INCH (SPECIAL)	SO YD	157.2	157.2		
X1700056	CLASS A PATCHES, TYPE III, 13 INCH (SPECIAL)	SO YD	16	16		
X4420563	CLASS A PATCHES, TYPE I, 11 INCH (SPECIAL)	SO YD	132	132		
X4420565	CLASS A PATCHES, TYPE II, 11 INCH (SPECIAL)	SO YD	430.6	430.6		

SUMMARY OF QUANTITIES			TOTAL QUANTITIES	CONSTRUCTION TYPE CODE		
CODE NO	ITEM	UNIT		0006		
X4420569	CLASS A PATCHES, TYPE III, 11 INCH (SPECIAL)	SO YD	72.7	72.7		
X4420571	CLASS A PATCHES, TYPE IV, 11 INCH (SPECIAL)	SO YD	923.3	923.3		
X4420587	CLASS A PATCHES, TYPE IV, 13 INCH (SPECIAL)	SO YD	360	360		

* SPECIALTY ITEM

MODEL: Default
 FILE NAME: p:\project-aw-beadby.com\FW\DOT\Documents\DOT Office\Director_T\Projects\7A77\CAD\DATA\CAD\PROJECTS\DOT\7A77-48-500.dgn

USER NAME = steffenmk	DESIGNED -	REVISED -
	DRAWN -	REVISED -
PLOT SCALE = 100,0000' / in.	CHECKED -	REVISED -
PLOT DATE = 11/4/2021	DATE -	REVISED -

STATE OF ILLINOIS
DEPARTMENT OF TRANSPORTATION

SUMMARY OF QUANTITES

SCALE: SHEET OF SHEETS STA. TO STA.

* F.A.P 712, F.A.U. 7464

F.A. RTE.	SECTION	COUNTY	TOTAL SHEETS	SHEET NO.
-	D7 PATCHING 2022-2	MACON	8	3
			CONTRACT NO. 74A77	
		ILLINOIS FED. AID PROJECT		

PATCHING SCHEDULE CONT.					X4420563 CLASS A PATCHES, TY I, 11 INCH (SPECIAL)								X4420565 CLASS A PATCHES, TY II, 11 INCH (SPECIAL)		X4420569 CLASS A PATCHES, TY III, 11 INCH (SPECIAL)		X4420571 CLASS A PATCHES, TY IV, 11 INCH (SPECIAL)		X1700054 CLASS A PATCHES, TY I, 13 INCH (SPECIAL)		X1700055 CLASS A PATCHES, TY II, 13 INCH (SPECIAL)		X1700056 CLASS A PATCHES, TY III, 13 INCH (SPECIAL)		X4420587 CLASS A PATCHES, TY IV, 13 INCH (SPECIAL)		44213204 TIE BARS, 3/4"		44213000 PATCHING REINFORCEMENT		44213200 SAW CUTS	
PATCH NUMBER	LANE	STATION	LENGT	WIDTH	TYPE 1	TYPE 2	TYPE 3	TYPE 4	TYPE 1	TYPE 2	TYPE 3	TYPE 4	EACH	SQ YD	FOOT																	
			H	FOOT	SQ YD	SQ YD	SQ YD	SQ YD	SQ YD	SQ YD	SQ YD	SQ YD				SQ YD																
101	SBPL	135+80	6.0	6.0	4.0									4.0	24.0																	
102	SBPL	135+65	6.0	6.0	4.0									4.0	24.0																	
103	SBPL	135+20	6.0	6.0	4.0									4.0	24.0																	
104	SBPL	129+80	15.0	6.0		10.0								10.0	42.0																	
105	SBLTL	127+50	10.0	12.0						13.3				13.3	44.0																	
106	SBPL	127+50	10.0	12.0						13.3				13.3	44.0																	
107	SBDL	127+50	10.0	12.0						13.3				13.3	44.0																	
STA EQ 126+96.71 BK = 202+86.71 AH																																
108	SBLTL	199+55	120.0	12.0								160.0	39	160.0	264.0																	
109	SBDL	197+91	6.0	6.0				4.0						4.0	36.0																	
110	SBDL	197+85	6.0	12.0						8.0				8.0	36.0																	
111	SBDL	195+90	6.0	12.0						8.0				8.0	36.0																	
112	SBDL	174+25	6.0	12.0						8.0				8.0	36.0																	
113	SBDL	172+85	10.0	12.0						13.3				13.3	44.0																	
114	SBDL	172+60	12.0	12.0							16.0			16.0	48.0																	
115	SBDL	168+25	6.0	12.0						8.0				8.0	36.0																	
116	SBPL	168+25	6.0	12.0						8.0				8.0	36.0																	
117	SBDL	164+35	6.0	12.0						8.0				8.0	36.0																	
118	SBDL	162+55	6.0	12.0						8.0				8.0	36.0																	
119	SBPL	162+55	6.0	12.0						8.0				8.0	36.0																	
120	SBDL	161+40	80.0	12.0								106.7	26	106.7	184.0																	
121	SBDL	160+30	30.0	12.0								40.0	9	40.0	84.0																	

TOTAL:	132.0	430.6	72.7	923.3	8.0	157.2	16.0	360.0	381.0	2099.8	6060.0
--------	-------	-------	------	-------	-----	-------	------	-------	-------	--------	--------

MODEL: Default
 FILE NAME: p:\ultra-cw-beadby.com\FW\DOT\Documents\DOT Office\District 7\Projects\74A77\CADD\DATA\CAD\patches\DOT74A77-ep-sec-schedule.com

* F.A.P 712, F.A.U. 7464

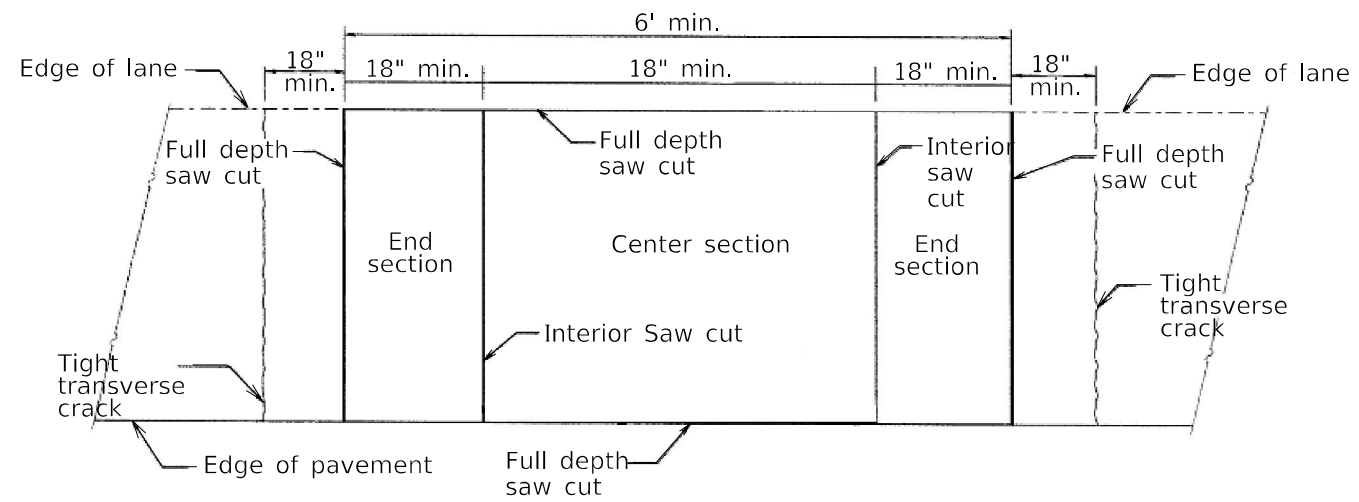
USER NAME = steffnmk	DESIGNED -	REVISED -
	DRAWN -	REVISED -
PLOT SCALE = 100,0000' / in.	CHECKED -	REVISED -
PLOT DATE = 11/4/2021	DATE -	REVISED -

**STATE OF ILLINOIS
DEPARTMENT OF TRANSPORTATION**

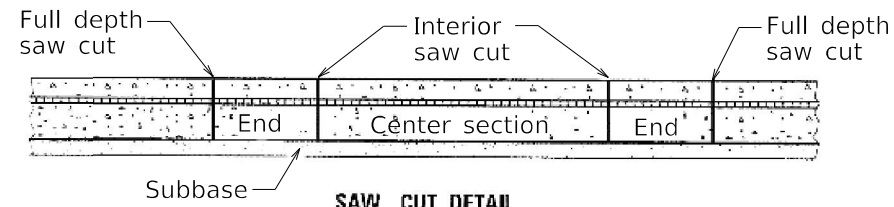
**SCHEDULE OF QUANTITIES
CLASS A PATCHES (SPECIAL)**

SCALE: SHEET OF SHEETS STA. TO STA.

F.A. RTE.	SECTION	COUNTY	TOTAL SHEETS	SHEET NO.
-	D7 PATCHING 2022-2	MACON	8	5
			CONTRACT NO. 74A77	
		ILLINOIS	FED. AID PROJECT	



PAVEMENT SAWING DETAIL



SAW CUT DETAIL

GENERAL NOTES

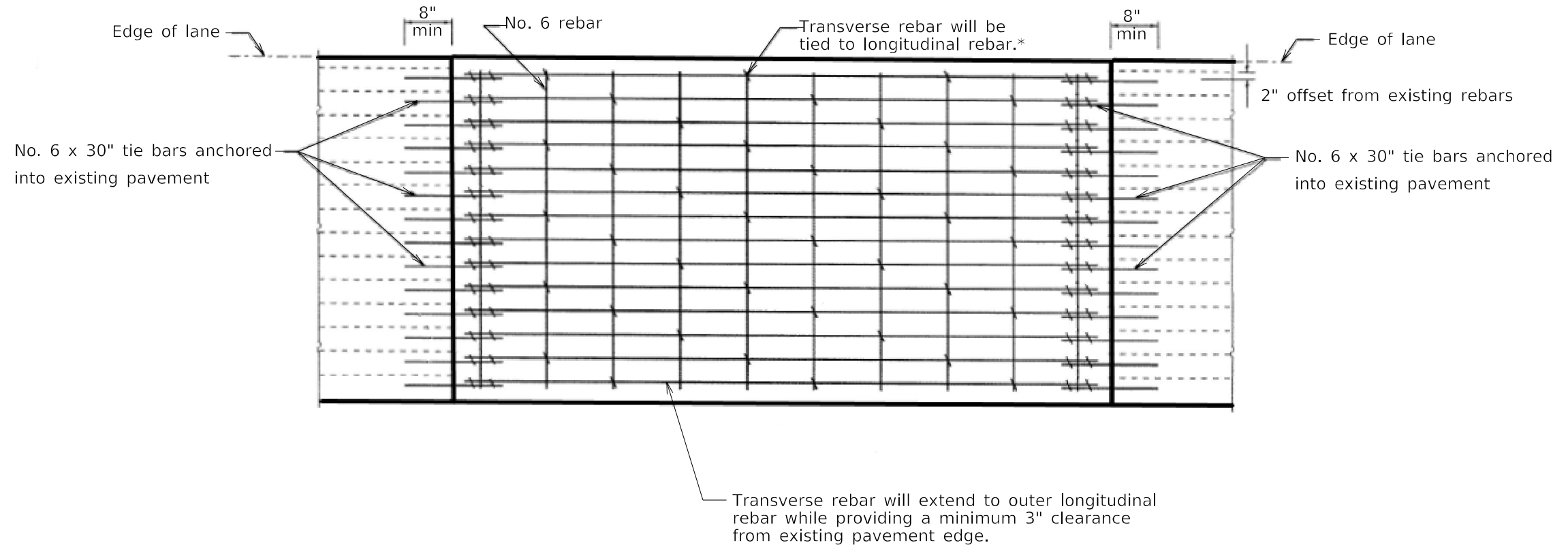
Interior saw cuts will be included in the cost of "CLASS A PATCHES (SPECIAL)."

When patching two adjacent lanes in one operation, the longitudinal joint shall be a longitudinal sowed joint as detailed on Standard 442001-04, however, the groove may be either preformed or sowed.

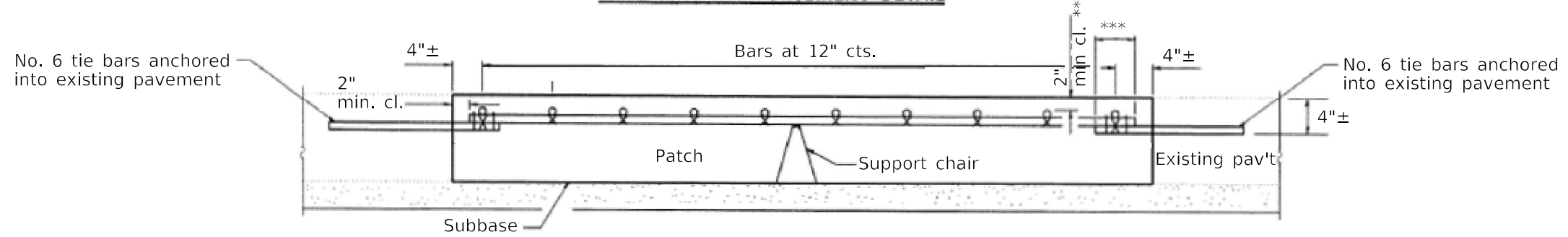
MODEL: Default
 FILE NAME: p:\ulldet-pw-bentley.com\PIV\DOT\Documents\DOT Office\District 7\Projects\74A77\CADD\DATA\CAD\PROJECTS\74A77-SP\LOCAL\1.dgn

* F.A.P 712, F.A.U. 7464

USER NAME = steffenmk	DESIGNED -	REVISED -	STATE OF ILLINOIS DEPARTMENT OF TRANSPORTATION	CLASS A PATCHES (SPECIAL)			F.A. RTE.	SECTION	COUNTY	TOTAL SHEETS	SHEET NO.
	DRAWN -	REVISED -					-	D7 PATCHING 2022-2	MACON	8	6
PLOT SCALE = 100,0000' / in.	CHECKED -	REVISED -		SCALE: SHEET OF SHEETS STA. TO STA.			CONTRACT NO. 74A77				
PLOT DATE = 11/4/2021	DATE -	REVISED -					ILLINOIS	FED. AID PROJECT			



PAVEMENT REINFORCEMENT DETAIL



PATCHING DETAIL

- * Every 3rd intersection must be tied.
- ** When the minimum clearance cannot be obtained with the transverse bar on top then the transverse rebar shall be tied to the bottom of the longitudinal rebar.
- *** Minimum lap length is 18"

GENERAL NOTES

The #6 tie bars to be drilled & grouted into the existing pavement shall be included in the cost of "CLASS A PATCHES (SPECIAL)."

MODEL: Default
FILE NAME: p:\project-pw-bentley.com\p\id\dot\documents\dot\office\dir\dir\7\project\74A77\CADD\DATA\CAD\PROJECTS\ID74A77-SP\REINFORC.DGN

* F.A.P 712, F.A.U. 7464

USER NAME = steffemk	DESIGNED -	REVISED -	STATE OF ILLINOIS DEPARTMENT OF TRANSPORTATION	CLASS A PATCHES (SPECIAL)			F.A. RTE.	SECTION	COUNTY	TOTAL SHEETS	SHEET NO.
PLOT SCALE = 100,0000' / in.	DRAWN -	REVISED -					-	D7 PATCHING 2022-2	MACON	8	7
PLOT DATE = 11/4/2021	CHECKED -	REVISED -		SCALE: SHEET OF SHEETS STA. TO STA.			CONTRACT NO. 74A77				
	DATE -	REVISED -					ILLINOIS FED. AID PROJECT				

