

INDEX OF SHEETS

01-21-2022 LETTING ITEM 084

- 1 COVER SHEET
- 2 GENERAL NOTES, SUMMARY OF QUANTITIES AND RATES OF APPLICATION
- 3 ROADWAY TYPICAL SECTIONS
- 4 PLAN AND PROFILE
- 5 GENERAL PLAN AND ELEVATION
- 6-7 STRUCTURE PLANS
- 8 CROSS SECTIONS

UTILITIES

ENERGY:

ComEd
PUBLIC RELOCATION DEPT 630-437-4855
ILLINOIS DAMAGE: ILLINOISDAMAGE@USICLLC.COM

COMMUNICATIONS:

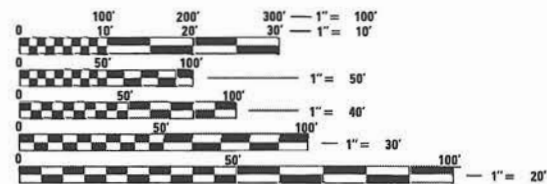
Frontier Telephone
KALIN HINSHAW 815-895-1515

HIGHWAY STANDARDS

- 000001-08 STANDARD SYMBOLS, ABBREVIATIONS AND PATTERNS
- 001006 DECIMAL OF AN INCH AND OF A FOOT
- 280001-07 TEMPORARY EROSION CONTROL SYSTEMS
- 515001-04 NAME PLATE FOR BRIDGES
- 630111-01 WEAK POST GUARDRAIL ATTACHED TO CULVERT
- 701006-05 OFF-RD OPERATIONS, 2L, 2W, 15'(4.5 m) TO 24" (600 mm) FROM PAVEMENT EDGE
- 701306-04 LANE CLOSURE, 2L, 2W, SLOW MOVING OPERATIONS DAY ONLY, FOR SPEEDS > 45 MPH
- 701901-08 TRAFFIC CONTROL DEVICES
- 720011-01 METAL POSTS FOR SIGNS, MARKERS & DELINEATORS
- 728001-01 TELESCOPING STEEL SIGN SUPPORT
- 729001-01 APPLICATIONS OF A & B METAL POSTS (FOR SIGNS & MARKERS)
- B.L.R. 21-9 TYPICAL APPLICATION OF TRAFFIC CONTROL DEVICES FOR CONSTRUCTION ON RURAL LOCAL HIGHWAYS

TRAFFIC DATA

CH 48 (FAS 40) YALE BRIDGE RD
FUNCTIONAL CLASSIFICATION - MAJOR COLLECTOR
2017 ADT = 675
DESIGN SPEED = 50 MPH



FULL SIZE PLANS HAVE BEEN PREPARED USING STANDARD ENGINEERING SCALES. REDUCED SIZED PLANS WILL NOT CONFORM TO STANDARD SCALES. IN MAKING MEASUREMENTS ON REDUCED PLANS, THE ABOVE SCALES MAY BE USED.

J.U.L.I.E.
JOINT UTILITY LOCATION INFORMATION FOR EXCAVATION
1-800-892-0123
OR 811

HLC PROJECT NO. 7710
HLC FIELD BOOK NO. XXX



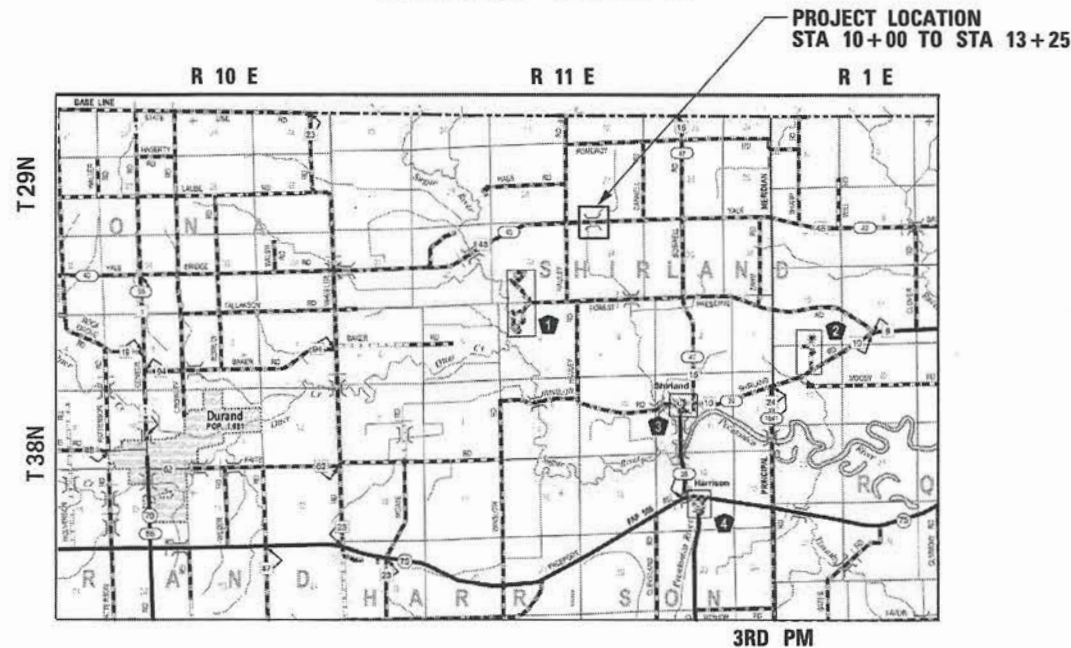
Anthony R. Fortin
ANTHONY R. FORTIN, P.E.
LICENSE EXPIRES 2/28/22
DATE 9/8/21

STATE OF ILLINOIS
DEPARTMENT OF TRANSPORTATION

**PLANS FOR PROPOSED
DRAINAGE IMPROVEMENTS**

**FAS 40 (YALE BRIDGE RD) CH 48 OVER
BRANCH OF SUGAR CREEK
WINNEBAGO COUNTY
SHIRLAND TOWNSHIP**

SECTION 19-00671-00-BR
PROJECT NO. DYWB(744)
JOB NO. C-92-044-20
CONTRACT NO. 85715



LOCATION MAP

TOTAL LENGTH = 325 FT = 0.062 MILES

RTE.	SECTION	COUNTY	TOTAL SHEETS	SHEET NO.
40	19-00671-00-BR	WINNEBAGO	8	1
	SHIRLAND TWP	ILLINOIS		



LOCATION OF SECTION INDICATED THUS: -

APPROVED Sep 8 2021
Anthony R. Fortin
COUNTY ENGINEER

PASSED November 4 2021
Tony Barretta
DISTRICT TWO ENGINEER OF
LOCAL ROADS AND STREETS

Releasing For
Bid Based on
Limited Review November 4 2021
Margaret Ahmed
DEPUTY DIRECTOR OF HIGHWAYS
REGION TWO ENGINEER

STATE OF ILLINOIS
DEPARTMENT OF TRANSPORTATION

**CHASTAIN
& ASSOCIATES LLC**
CONSULTING ENGINEERS
DECATUR (217) 422-8544
SCHAUMBURG (773) 714-0050
ROCKFORD (815) 489-0050
184-001397

THE PROPOSED IMPROVEMENT CONSISTS OF THE REPLACEMENT OF A R.C. BOX CULVERT (SN 101-5162) UNDER YALE BRIDGE ROAD LOCATED 0.33 MILES EAST OF HAULY ROAD AND 2 1/2 MILES NORTH OF SHIRLAND, IL.

GENERAL NOTES

- ALL CONSTRUCTION SHALL BE DONE IN ACCORDANCE WITH THE DETAILS IN THE PLANS, THE SPECIAL PROVISIONS INCLUDED IN THE CONTRACT DOCUMENTS, AND THE LATEST EDITION OF THE STATE OF ILLINOIS "STANDARD SPECIFICATIONS FOR ROAD AND BRIDGE CONSTRUCTION", THE "SUPPLEMENTAL SPECIFICATIONS AND RECURRING SPECIAL PROVISIONS", THE STANDARD SPECIFICATIONS FOR TRAFFIC CONTROL ITEMS, THE "MANUAL OF UNIFORM TRAFFIC CONTROL DEVICES FOR STREETS AND HIGHWAYS", THE "MANUAL OF TEST PROCEDURES FOR MATERIALS", AND THE "STANDARD SPECIFICATIONS FOR WATER AND SEWER MAIN CONSTRUCTION IN ILLINOIS".
- BEFORE STARTING ANY EXCAVATION, THE CONTRACTOR SHALL CALL "J.U.L.I.E" AT 1-800-892-0123 FOR FIELD LOCATION OF BURIED ELECTRIC, TELEPHONE, GAS AND OTHER FACILITIES AT LEAST 48 HOURS PRIOR TO BEGINNING CONSTRUCTION.
- LOCATIONS OF PUBLIC OR PRIVATE UTILITIES SHOWN ON THE PLANS ARE APPROXIMATE AND THE COUNTY DOES NOT GUARANTEE THEIR ACCURACY. THE CONTRACTOR SHALL HAVE THE RESPECTIVE UTILITY COMPANIES FIELD LOCATE ALL THEIR FACILITIES PRIOR TO BEGINNING CONSTRUCTION. THE CONTRACTOR SHALL ALSO VERIFY THE DEPTHS OF THE EXISTING UTILITIES IF NECESSARY. ANY RELOCATION OR LOWERING OF UTILITIES SHALL BE COORDINATED BY THE CONTRACTOR IN SUCH A MANNER TO NOT IMPEDE PROJECT PROGRESS.
- THE CONTRACTOR SHALL BE RESPONSIBLE FOR THE PROTECTION OF ALL UNDERGROUND OR SURFACE UTILITIES EVEN THOUGH THEY MAY NOT BE SHOWN ON THE PLANS. ANY UTILITY THAT IS DAMAGED DURING CONSTRUCTION SHALL BE REPAIRED OR REPLACED AT THE CONTRACTOR'S EXPENSE TO THE SATISFACTION OF THE ENGINEER.
- THE CONTRACTOR SHALL NOTIFY THE COUNTY AT LEAST 48 HOURS IN ADVANCE OF BEGINNING WORK AND COORDINATE ALL CONSTRUCTION OPERATIONS WITH THE ENGINEER.
- THE CONTRACTOR SHALL PROTECT AND CAREFULLY PRESERVE ALL SECTION OR SUBSECTION MONUMENTS OR PROPERTY OR REFERENCE MARKERS UNTIL THE OWNERS, HIS AGENT OR AN AUTHORIZED SURVEYOR HAS WITNESSED OR OTHERWISE REFERENCED THE LOCATIONS.
- MAINTAINING DRAINAGE: IT SHALL BE THE CONTRACTOR'S RESPONSIBILITY TO MAINTAIN DRAINAGE FLOWS AT ALL TIMES DURING THE PERFORMANCE OF THE WORK. THE CONTRACTOR SHALL SUPPLY A PLAN AS A SUBMITTAL REVIEW FOR EACH LOCATION THAT WILL MAINTAIN FLOWS THAT MEET ALL LOCAL, STATE AND FEDERAL REGULATIONS AND NOT CAUSE ANY DAMAGE UPSTREAM OR TO ANY ADJACENT DRAINAGE WATERSHED. THE PLAN SHALL BE SEALED BY A REGISTERED PROFESSIONAL ENGINEER IN THE STATE OF ILLINOIS. THE PLAN MUST BE SUBMITTED AT LEAST TWO WEEKS PRIOR TO START OF ANY CULVERT WORK. COST OF MAINTAINING DRAINAGE FLOWS SHALL BE INCIDENTAL TO THE CONTRACT.
- CONTRACTOR SHALL NOT SCALE DIMENSIONS FROM THE CONTRACT PLANS FOR CONSTRUCTION PURPOSES. SCALES, IF SHOWN ARE FOR INFORMATION ONLY.
- THE CONTRACTOR SHALL SUBMIT FOR APPROVAL, THE PROPOSED CONCRETE TRUCK WASHOUT LOCATION. RUNOFF FROM WASH AREAS SHALL BE CONTAINED IN DESIGNATED AREAS SO THAT RUNOFF DOES NOT REACH THE DITCH OR DRAINAGE SYSTEMS.
- PLAN DIMENSIONS AND DETAILS RELATIVE TO EXISTING STRUCTURES HAVE BEEN TAKEN FROM FIELD MEASUREMENTS AND AS-BUILT PLANS. IT SHALL BE THE CONTRACTOR'S RESPONSIBILITY TO VERIFY SUCH DIMENSIONS AND DETAILS IN THE FIELD AND MAKE NECESSARY APPROVED ADJUSTMENTS PRIOR TO CONSTRUCTION OR ORDERING THE MATERIALS.
- ALL WORK SHALL BE COMPLETED WITHIN COUNTY RIGHT-OF-WAY WITH NO EQUIPMENT OR MATERIAL STORAGE ON PRIVATE PROPERTY.
- THE CONTRACTOR'S OPERATIONS AND TEMPORARY STORAGE ACTIVITIES SHALL BE LIMITED TO THE WORK AREA AND/OR CONSTRUCTION LIMITS.
- COORDINATE ANY REQUIRED SIGN REMOVAL WITH THE COUNTY ONE (1) WEEK PRIOR TO CONSTRUCTION.
- NO CHANNEL GRADING OR CULVERT CONSTRUCTION ACTIVITIES WILL BE ALLOWED IN STANDING WATER OR DURING PERIODS OF HIGH FLOWS AND EXCESSIVE CHANNEL FLOW VELOCITIES.
- SAW CUTTING SHALL BE PERFORMED AT LOCATIONS DESIGNATED ON THE PLANS, OR AS DIRECTED BY THE ENGINEER, AND SHALL BE CONSIDERED INCLUDED IN THE COST OF APPLICABLE PAY ITEMS. CLEANING AND REMOVAL OF ANY AND ALL SAW CUT DEBRIS SHALL ALSO BE INCLUDED. TRAFFIC IS TO BE MAINTAINED FOR THE DURATION OF THE PROJECT.
- THE FOLLOWING BMPs SHALL BE IMPLEMENTED TO CONTROL RESIDUAL CONCRETE, CONCRETE SEDIMENTS, AND RINSE WATER:
 - TEMPORARY CONCRETE WASHOUT FACILITIES SHALL BE CONSTRUCTED FOR RINSING OUT CONCRETE TRUCKS. SIGNS SHALL BE INSTALLED DIRECTING CONCRETE TRUCK DRIVERS WHERE DESIGNATED WASHOUT FACILITIES ARE LOCATED.
 - THE CONTRACTOR SHALL HAVE THE LOCATION OF TEMPORARY CONCRETE WASHOUT FACILITIES APPROVED BY THE RESIDENT ENGINEER.
 - ALL TEMPORARY CONCRETE WASHOUT FACILITIES ARE TO BE INSPECTED BY THE CONTRACTOR AFTER EACH USE AND ALL SPILLS MUST BE REPORTED TO THE RESIDENT ENGINEER AND CLEANED UP IMMEDIATELY.
 - CONCRETE WASTE SOLIDS/LIQUIDS SHALL BE DISPOSED OF PROPERLY.

SUMMARY OF QUANTITIES
CONSTRUCTIN TYPE CODE: 0010

Code Number	Pay Item	Unit	Total
20200100	Earth Excavation (Roadway)	Cu. Yd.	451
20700220	Porous Granular Embankment	Cu. Yd.	156
25000200	Seeding, Class 2	Acre	0.23
25000400	Nitrogen Fertilizer Nutrient	Pound	20
25000500	Phosphorus Fertilizer Nutrient	Pound	20
25000600	Potassium Fertilizer Nutrient	Pound	20
25100630	Erosion Control Blanket	Sq. Yd.	1089
28000305	Temporary Ditch Checks	Foot	100
28000400	Perimeter Erosion Barrier	Foot	552
28100107	Stone Riprap, Class A4	Sq. Yd.	22
28200200	Filter Fabric	Sq. Yd.	22
35101400	Aggregate Base Course, Type B	Ton	541
40600275	Bituminous Materials (Prime Coat)	Pound	3360
40600290	Bituminous Materials (Tack Coat)	Pound	182
40603080	Hot-mix Asphalt Binder Course, IL-19.0, N50	Ton	185
40604050	Hot-mix Asphalt Surface Course, IL-9.5, Mix "C", N50	Ton	93
48101200	Aggregate Shoulders, Type B	Ton	97
50100100	Removal of Existing Structures	Each	1
50200100	Structure Excavation	Cu. Yd.	200
50800105	Reinforcement Bars	Pound	36,240
50800205	Reinforcement Bars, Epoxy Coated	Pound	1120
51500100	Name Plates	Each	1
54003000	Concrete Box Culverts	Cu. Yd.	172.8
△ 63000003	Steel Plate Beam Guardrail, Type A, 9 Foot Posts	Foot	250
△ 63000054	Weak Post Guardrail Attached to Culvert Case 5	Foot	60
△ 63100167	Traffic Barrier Terminal Type 1 (Special) Tangent	Each	4
63200310	Guardrail Removal	Foot	440
67100100	Mobilization	L Sum	1
△ 72501000	Terminal Marker-Direct Applied	Each	4
X0900064	Membrane Waterproofing System For Buried Structures	Sq. Yd.	147
X7010216	Traffic Control And Protection (Special)	L Sum	1
20013798	Construction Layout	L Sum	1

△ SPECIALTY ITEMS

RATES OF APPLICATION

ITEMS	RATE OF APPLICATION
AGGREGATE BASE COURSE	= 2.05 TONS/ CU YD
RIPRAP	= 1.5 TONS/ CU YD
PORTLAND CEMENT	= 8% BY WEIGHT
BITUMINOUS MATERIALS (TACK COAT)	= 0.025 LB/50 FT
BITUMINOUS MATERIALS (PRIME COAT)	= 0.25 TO 0.50 GAL/50 YD AT 8.2 TO 8.35 LB/GAL

GUARDRAIL SCHEDULE

ITEM NO.	DESCRIPTION	LOCATION	QUANTITY
63000003	STEEL PLATE BEAM GUARDRAIL, TYPE A, 9 FOOT POSTS	STA 12+04.3 LT TO STA 13+29.3 LT	125 FT
		STA 10+16.3 RT TO STA 11+41.3 RT	125 FT
		TOTAL	250 FT
63000054	WEAK POST GUARDRAIL ATTACHED TO CULVERT CASE V	STA 11+75.2 LT TO STA 12+05.2 LT	30 FT
		STA 11+40.8 RT TO STA 11+70.8 RT	30 FT
		TOTAL	60 FT
63100167	TRAFFIC BARRIER TERMINAL, TYPE 1 (SPECIAL) TANGENT	STA 9+68.7 RT	1 EACH
		STA 11+41.4 LT	1 EACH
		STA 12+17.8 RT	1 EACH
		STA 13+76.1 LT	1 EACH
		TOTAL	4 EACH

FILES

USER NAME =	DESIGNED - TO	REVISED -
PLOT SCALE =	DRAWN - ORG	REVISED -
PLOT DATE =	CHECKED - TO	REVISED -
	DATE - 02/23/2021	REVISED -



DECATUR (217) 422-8544
SCHAUMBURG (773) 714-0050
ROCKFORD (815) 489-0050
184-001397

GENERAL NOTES, SUMMARY OF QUANTITIES AND RATES OF APPLICATION

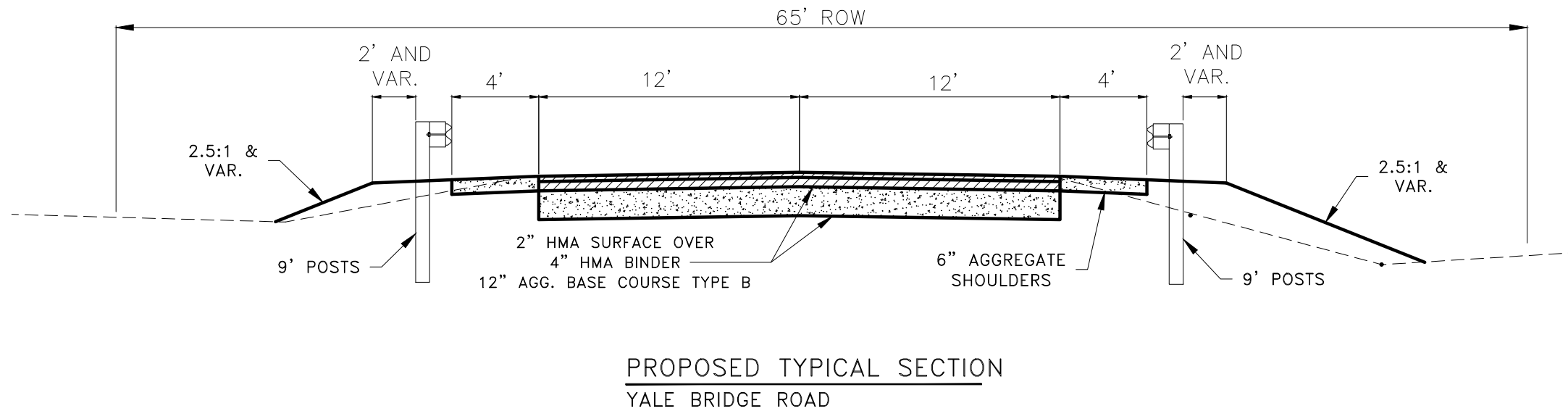
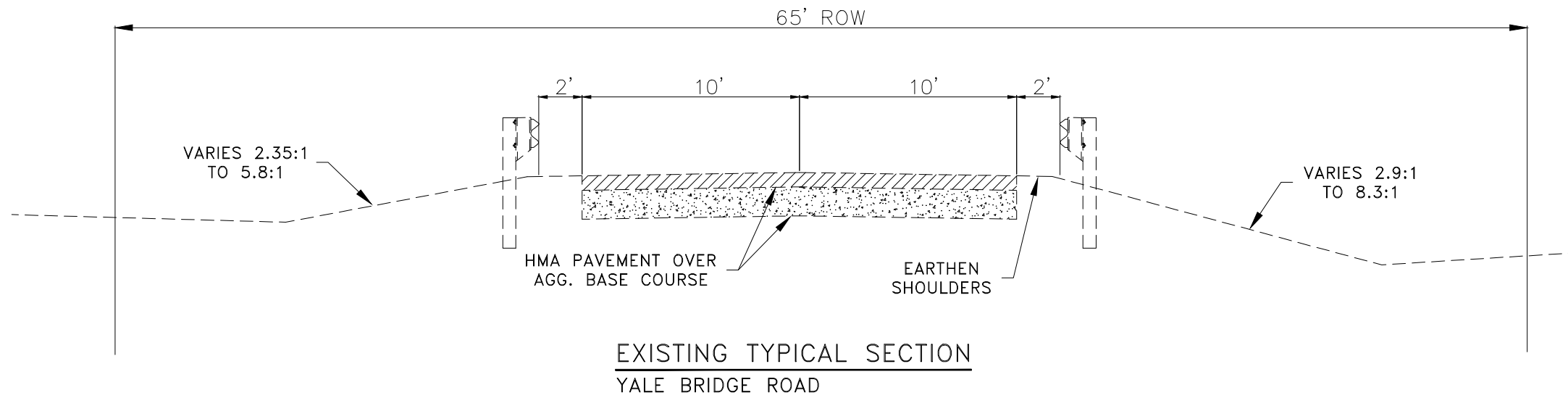
SCALE: SHEET NO. OF SHEETS STA. TO STA.

RTE.	SECTION	COUNTY	TOTAL SHEETS	SHEET NO.
40	19-00671-00-BR	WINNEBAGO	8	2
PROJECT 7710 ILLINOIS			CONTRACT NO. 85715	

DATE	
BY	
PLAN	
NO.	
NOTE BOOK	
NO.	
SURVEYED	
PLOTTED	
ALIGNED & CHECKED	
CONTRACTOR'S NAME	
NO.	

DATE	
BY	
PROFILE	
NO.	
NOTE BOOK	
NO.	
SURVEYED	
PLOTTED	
GRADINGS CHECKED	
STRUCTURE NOTATIONS CHECKED	
NO.	

MODEL:Default
FILE NAME:R:\Prj\County\7110 Winnebago County - Yale Bridge Rd Culvert\CADD\CADD Civil\7110 WORKING DRAWING.DWG



MIXTURE TABLE

MIXTURE USE:	4.0" HMA BINDER	2.0" HMA SURFACE
PG	PG 64-22	PG 64-22
DESIGN AIR VOIDS	4.0% @ N50	4.0% @ N50
MIX COMP (GRADATION)	IL 19.0	IL 9.5
FRICTION AGGREGATE		MIX C
QUALITY MANAGEMENT PROGRAM	QC/QA	QC/QA

= sbrandau	DESIGNED -	REVISED -
	DRAWN -	REVISED -
PLOT SCALE = 40,000'/in	CHECKED -	REVISED -
PLOT DATE = 12/29/2022	DATE -	REVISED -

CHASTAIN & ASSOCIATES LLC
CONSULTING ENGINEERS

6832 STALTER DRIVE, SUITE 100
ROCKFORD, IL 61108
PHONE: 815-489-0050
FAX: 815-489-0050
WWW.CHASTAINENGINEERS.COM

SCALE:	SHEET	OF	SHEETS	STA.	TO STA.
--------	-------	----	--------	------	---------

TYPICAL SECTIONS

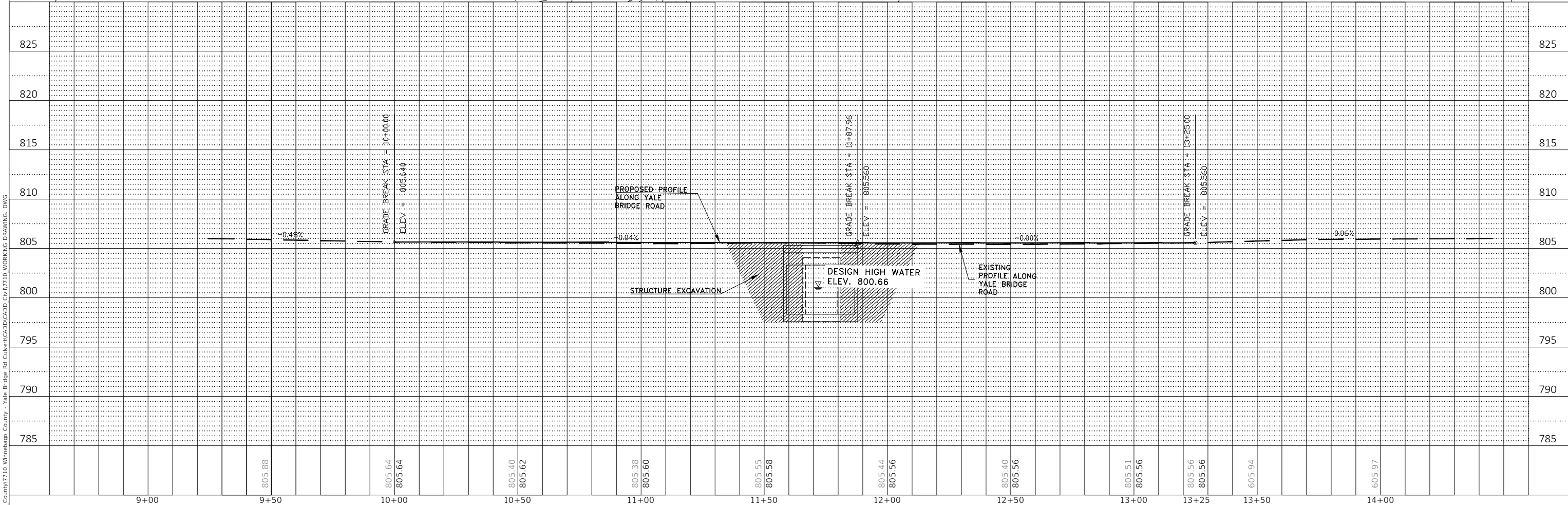
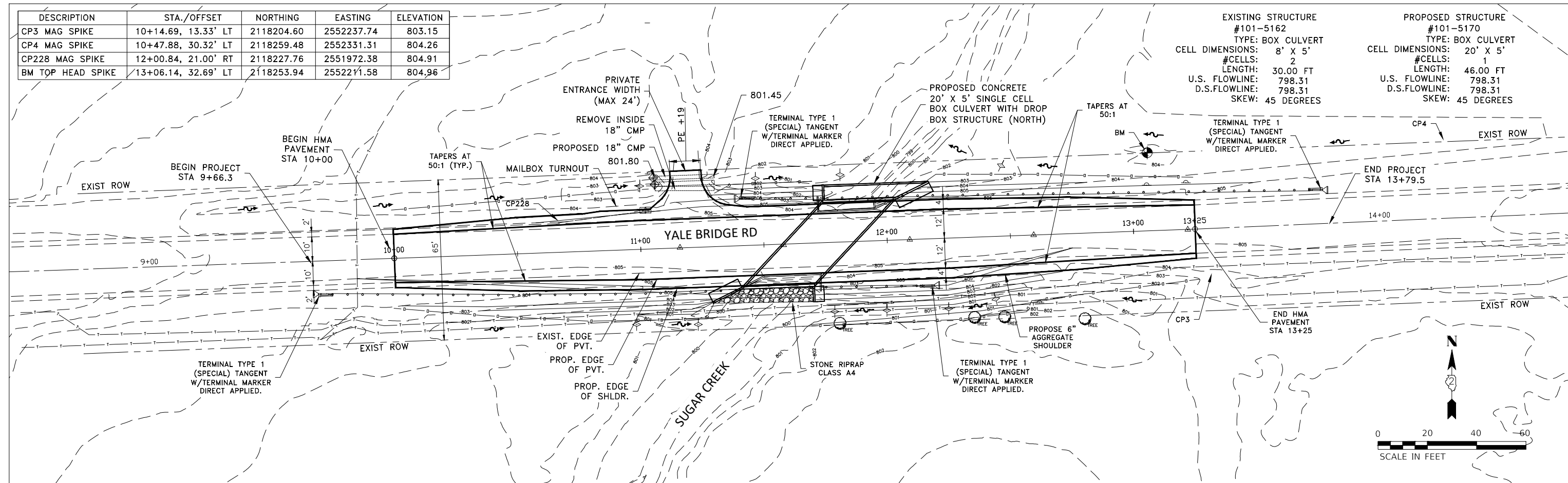
RTE.	SECTION	COUNTY	TOTAL SHEETS	SHEET NO.
48	19-00671-00-BR	WINNEBAGO	8	3
CONTRACT NO. 85715				
ILLINOIS FED. AID PROJECT				

DESCRIPTION	STA./OFFSET	NORTHING	EASTING	ELEVATION
CP3 MAG SPIKE	10+14.69, 13.33' LT	2118204.60	2552237.74	803.15
CP4 MAG SPIKE	10+47.88, 30.32' LT	2118259.48	2552331.31	804.26
CP228 MAG SPIKE	12+00.84, 21.00' RT	2118227.76	2551972.38	804.91
BM TOP HEAD SPIKE	13+06.14, 32.69' LT	2118253.94	2552211.58	804.96

EXISTING STRUCTURE	PROPOSED STRUCTURE
#101-5162	#101-5170
TYPE: BOX CULVERT	TYPE: BOX CULVERT
CELL DIMENSIONS: 8' X 5'	CELL DIMENSIONS: 20' X 5'
#CELLS: 2	#CELLS: 1
LENGTH: 30.00 FT	LENGTH: 46.00 FT
U.S. FLOWLINE: 798.31	U.S. FLOWLINE: 798.31
D.S. FLOWLINE: 798.31	D.S. FLOWLINE: 798.31
SKEW: 45 DEGREES	SKEW: 45 DEGREES

DATE	
BY	
PLAN	
NO.	
DATE	
BY	
PROFILE	
NO.	

DATE	
BY	
PROFILE	
NO.	
DATE	
BY	
PLAN	
NO.	



MODEL:Default
FILE NAME:R:\Pj\County7710 Winnebago County - Yale Bridge Rd Culvert\CADD\CADD Civil\7710 WORKING DRAWING.DWG

DESIGNED -	REVISD -
DRAWN -	REVISD -
CHECKED -	REVISD -
DATE -	REVISD -

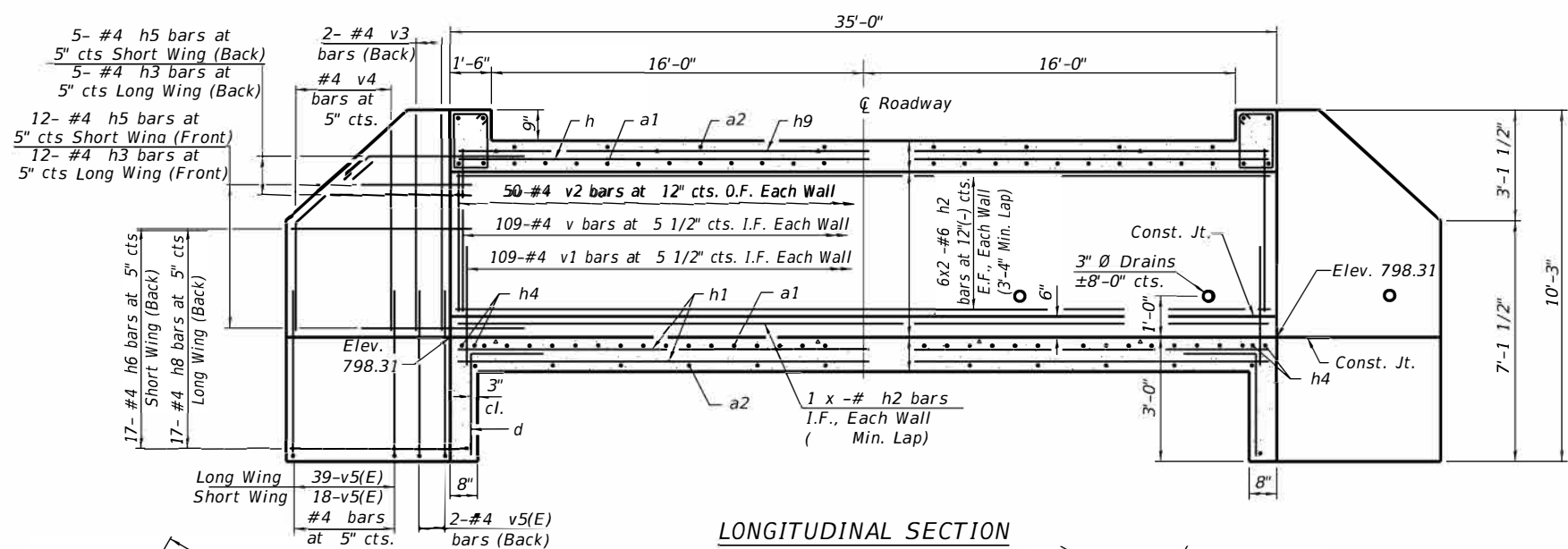
CHASTAIN & ASSOCIATES LLC
CONSULTING ENGINEERS

6832 STALTER DRIVE, SUITE 100
ROCKFORD, IL 61108
PHONE: 815-489-0050
FAX: 815-489-0050
WWW.CHASTAINENGINEERS.COM

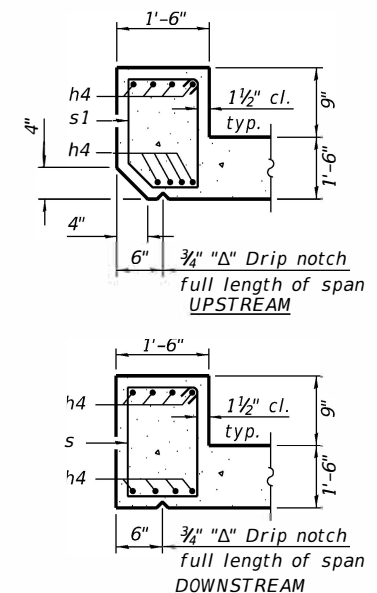
PLAN & PROFILE

SCALE: SHEET OF SHEETS STA. TO STA.

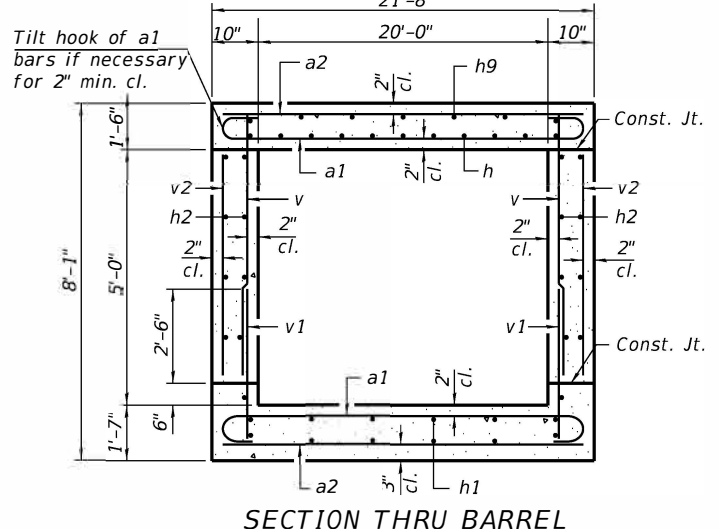
ROUTE	SECTION	COUNTY	TOTAL SHEETS	SHEET NO.
48	19-00671-00-BR	WINNEBAGO	8	4
ILLINOIS FED. AID PROJECT			CONTRACT NO. 85715	



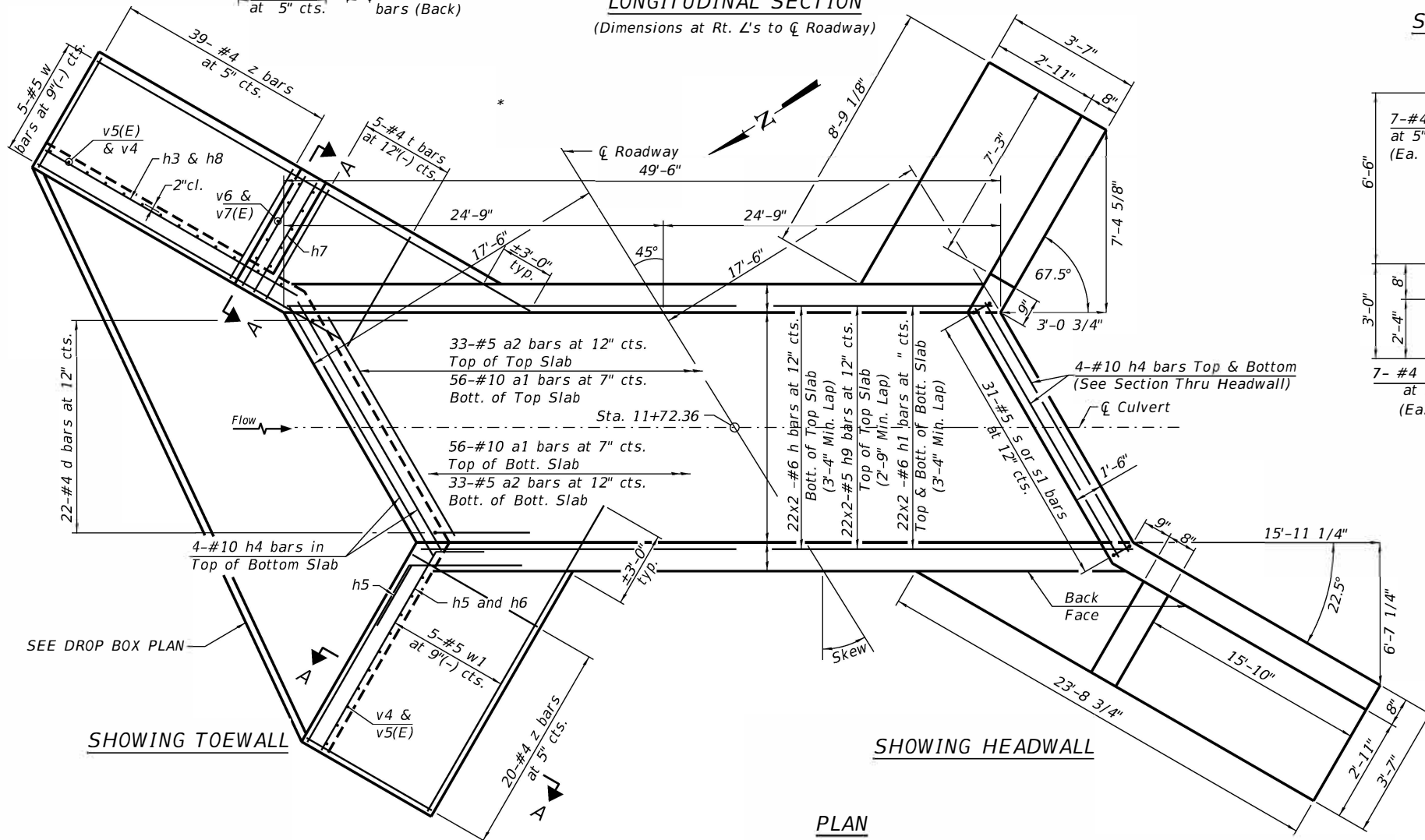
LONGITUDINAL SECTION
(Dimensions at Rt. L's to C Roadway)



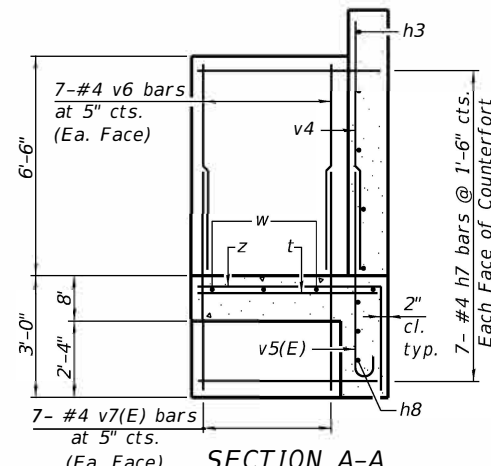
SECTION THRU HEADWALL



SECTION THRU BARREL



PLAN



SECTION A-A

Showing long wing with counterfort. Omit counterfort at short wing.

FIELD CUTTING DIAGRAM

Order bars shown full length. Cut as shown and use remainder of bars in opposite wingwall.

BILL OF MATERIAL

Bar No.	Size	Length	Shape
a1	112 #10	33'-0"	[U]
a2	66 #5	30'-2"	[—]
d	44 #4	4'-5"	[L]
h	44 #6	26'-5"	[—]
h1	88 #6	26'-5"	[—]
h2	48 #6	26'-5"	[—]
h3	34 #4	9'-6"	[—]
h4	24 #10	30'-3"	[—]
h5	34 #4	4'-3"	[—]
h6	34 #4	7'-8"	[—]
h7	28 #4	3'-3"	[—]
h8	34 #4	17'-0"	[—]
h9	44 #5	26'-0"	[—]
h10	36 #4	24'-8"	[—]
s	31 #5	7'-5"	[O]
s1	31 #5	7'-4"	[O]
t	10 #4	3'-3"	[—]
v	218 #4	4'-4"	[—]
v1	218 #4	5'-9"	[—]
v2	100 #4	4'-3"	[—]
v3	8 #4	7'-0"	[—]
v4	57 #4	10'-0"	[—]
v5(E)	236 #4	6'-5"	[U]
v6	28 #4	6'-3"	[—]
v7(E)	28 #4	6'-0"	[—]
v8	114 #4	3'-10"	[—]
w	5 #5	46'-6"	[—]
w1	10 #5	11'-6"	[—]
w2	20 #5	24'-6"	[—]
z	118 #4	5'-11"	[L]
z1	75 #4	9'-8"	[L]
z2	38 #4	9'-8"	[L]
Concrete Box Culverts			Cu. Yd. 172.8
Reinforcement Bars			Pound 36,240
Reinforcement Bars, Epoxy Coated			Pound 1120
Membrane Waterproofing			Sq. Yd 147
Pourus Gran. Embank.			CU YD 156

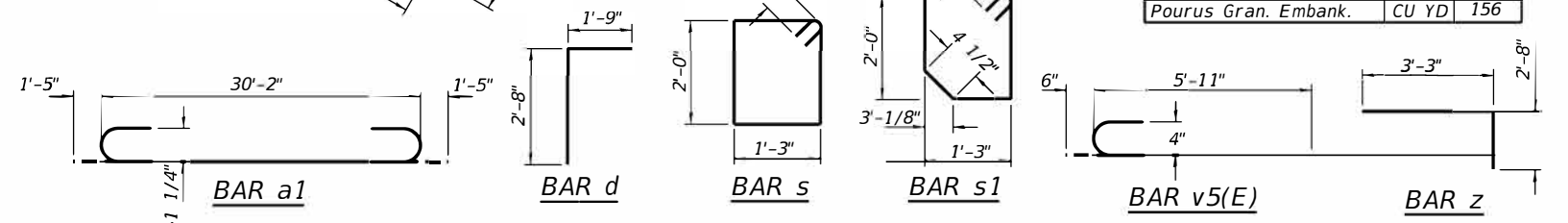
Notes:
Bars indicated thus 12 x 4-#5 etc. indicates 12 lines of bars with 4 lengths per line.
At the Contractor's option, a longer v1 bar may be ordered to replace the v bar.
No reduction in quantities shall be made for this substitution.

TSA-SC-LT-LS 2-17-2017

CHASTAIN & ASSOCIATES LLC
CONSULTING ENGINEERS

DECATUR (317) 422-8544
SCHAUMBURG (773) 714-0050
ROCKFORD (815) 489-0050
184-001397

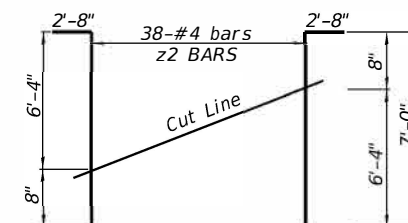
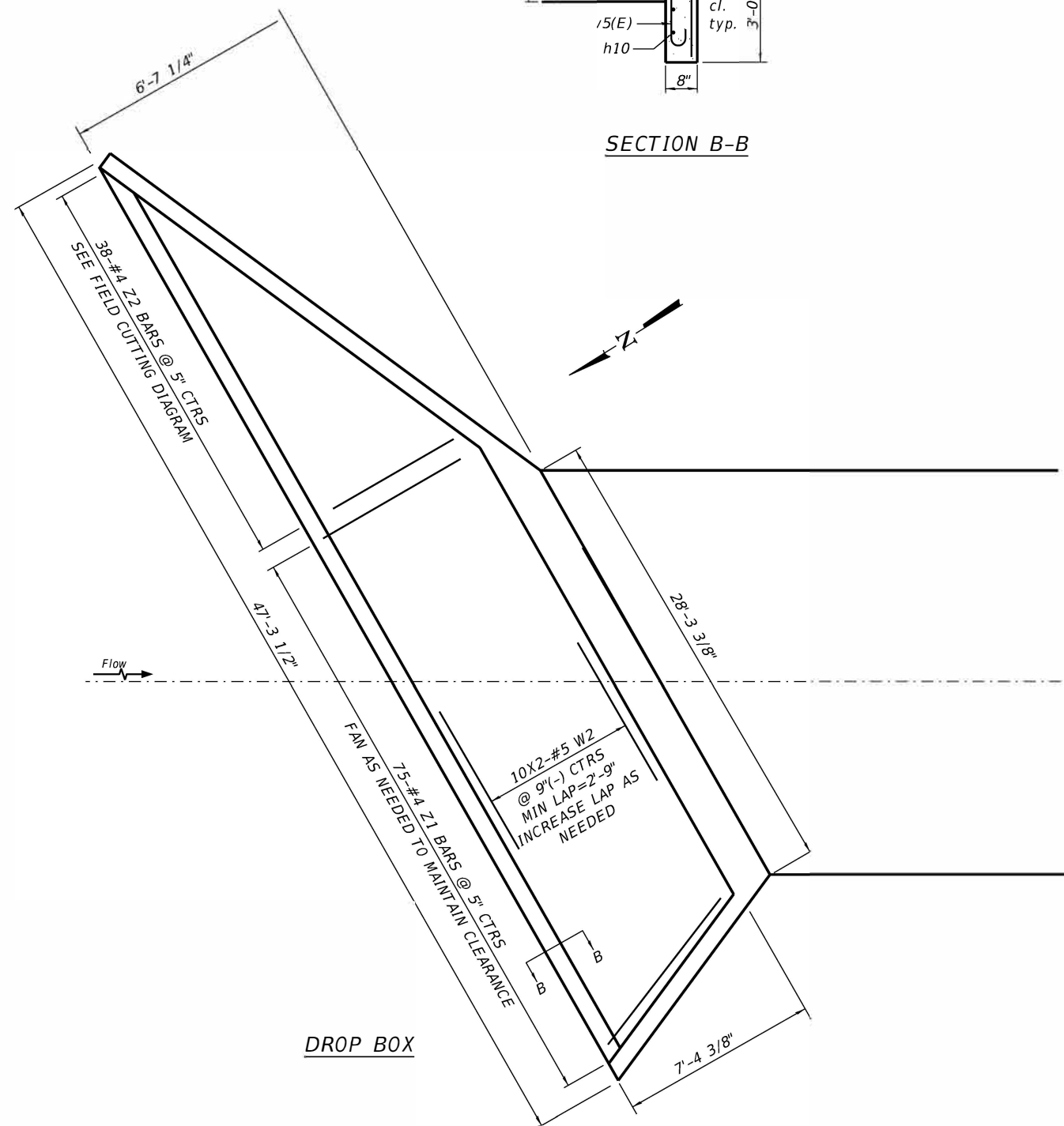
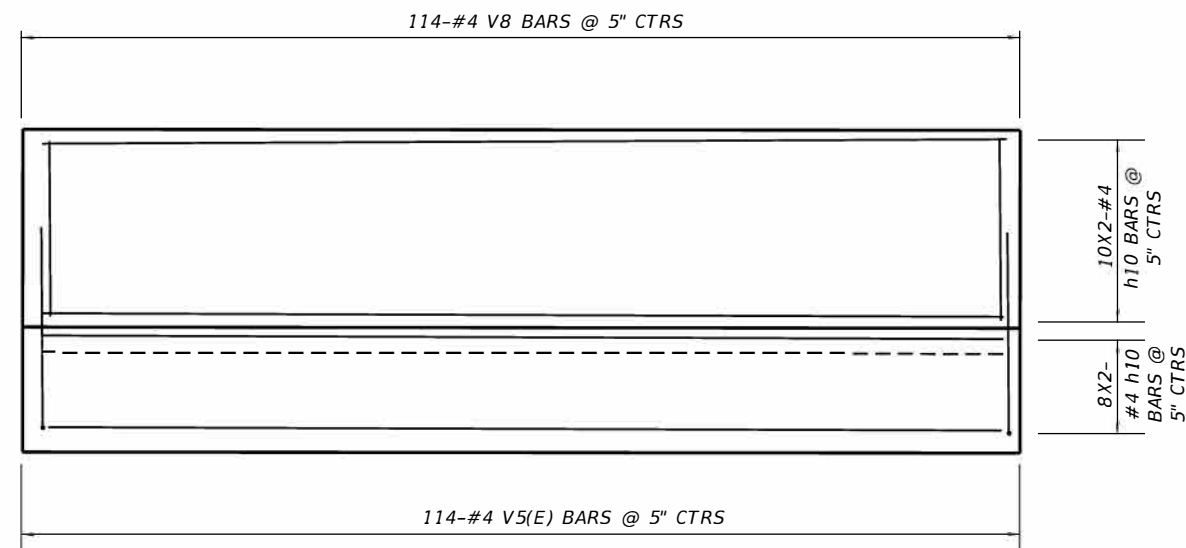
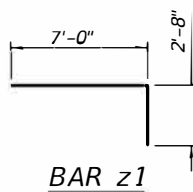
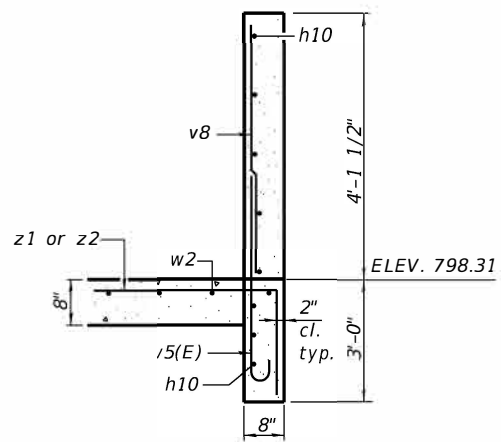
CULVERT DETAILS



USER NAME =	DESIGNED - TO	REVISED -
	DRAWN - ORG	REVISED -
PLOT SCALE =	CHECKED - TO	REVISED -
PLOT DATE =	DATE - 07/23/2020	REVISED -

RTE.	SECTION	COUNTY	TOTAL SHEETS	SHEET NO.
40	19-00671-00-BR	WINNEBAGO	8	6
PROJECT ILLINOIS			CONTRACT NO. 85715	

SCALE: SHEET NO. OF SHEETS STA. TO STA.



FIELD CUTTING DIAGRAM
Order bars full length. Cut as shown and discard remainder.

8FILES

USER NAME =	DESIGNED - TO	REVISED -
DRAWN - ORG	CHECKED - TO	REVISED -
PLOT SCALE =	DATE - 07/23/2020	REVISED -
PLOT DATE =		

CHASTAIN & ASSOCIATES LLC
CONSULTING ENGINEERS

DECATUR (817) 422-8544
SCHAUMBURG (773) 714-0050
ROCKFORD (815) 489-0050
184-001397

CULVERT DETAILS

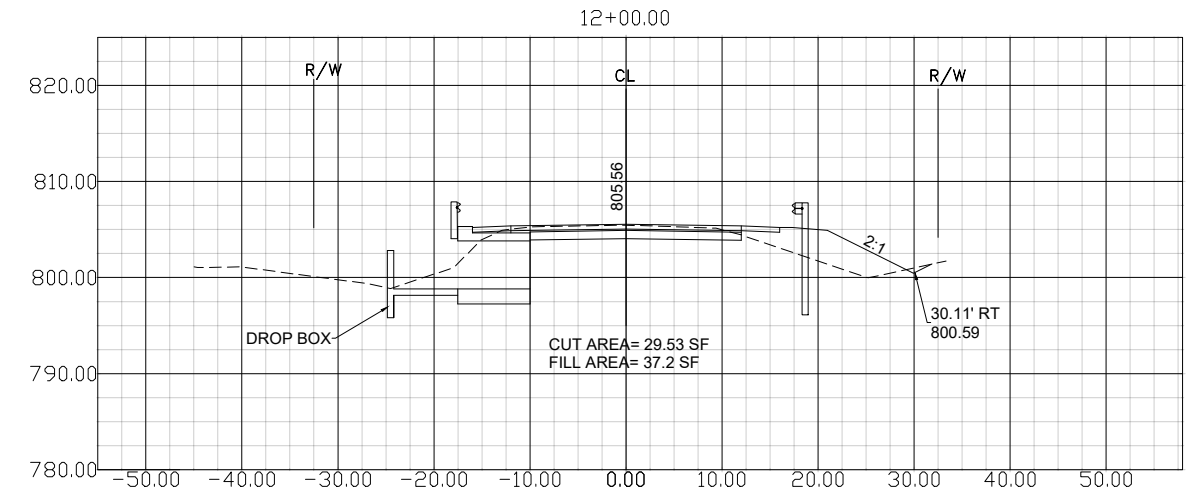
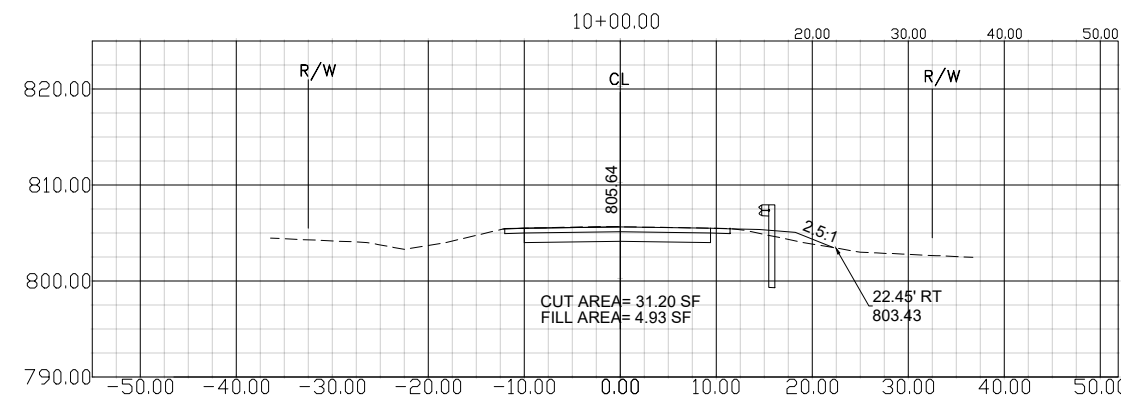
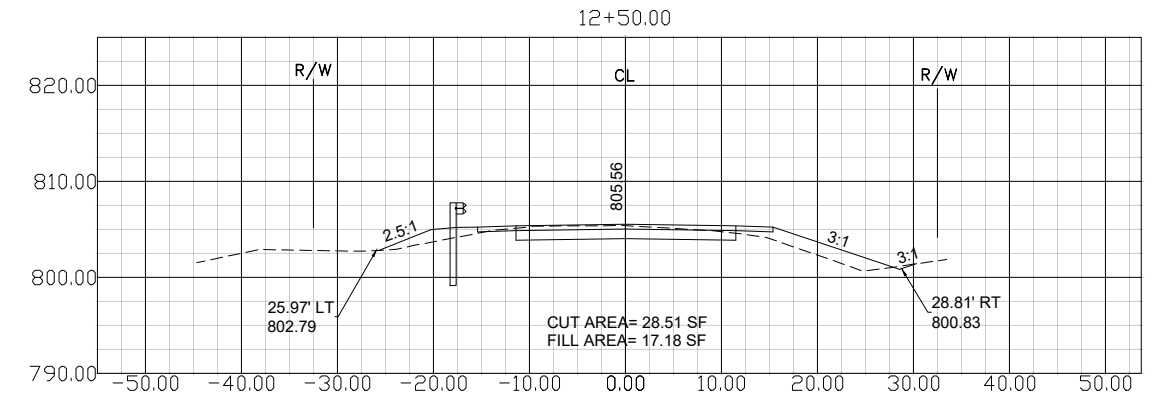
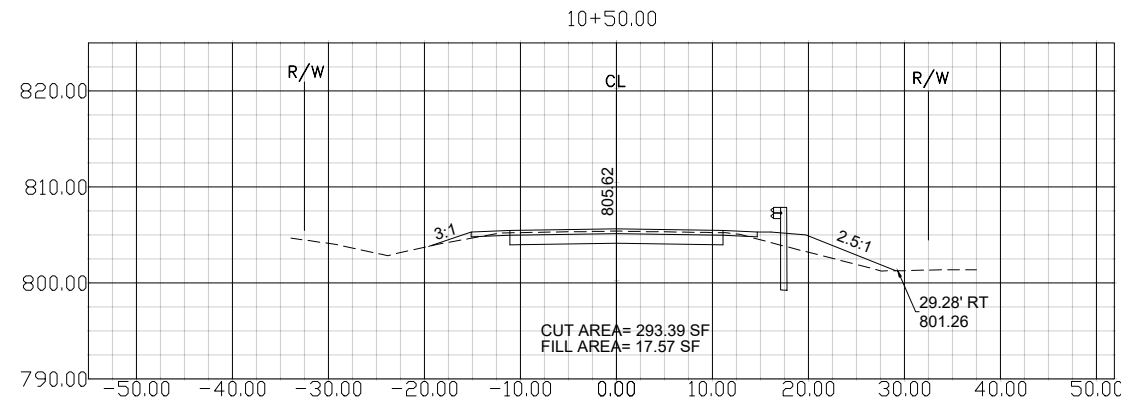
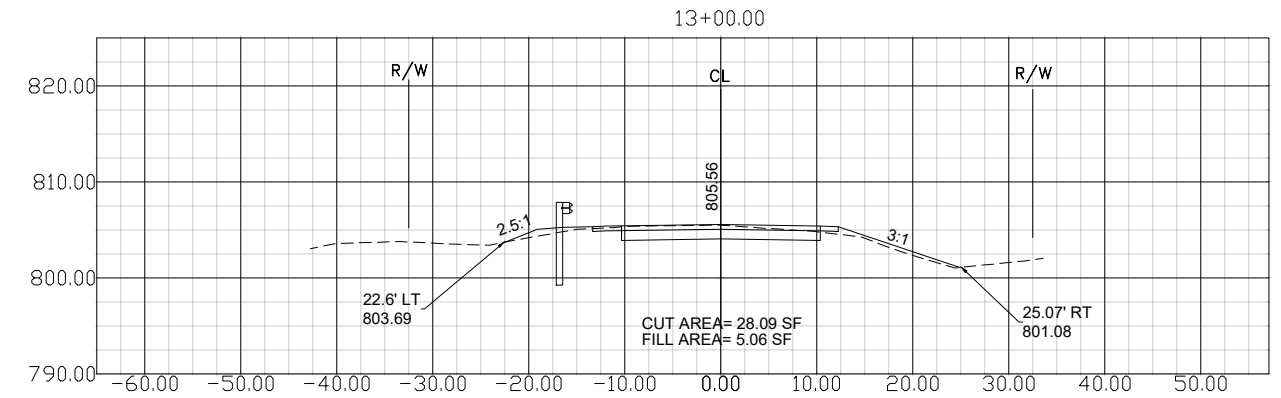
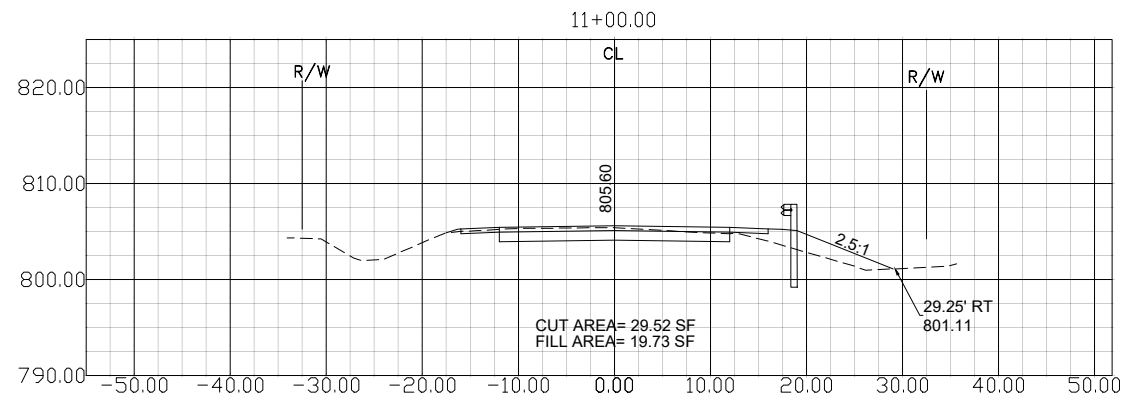
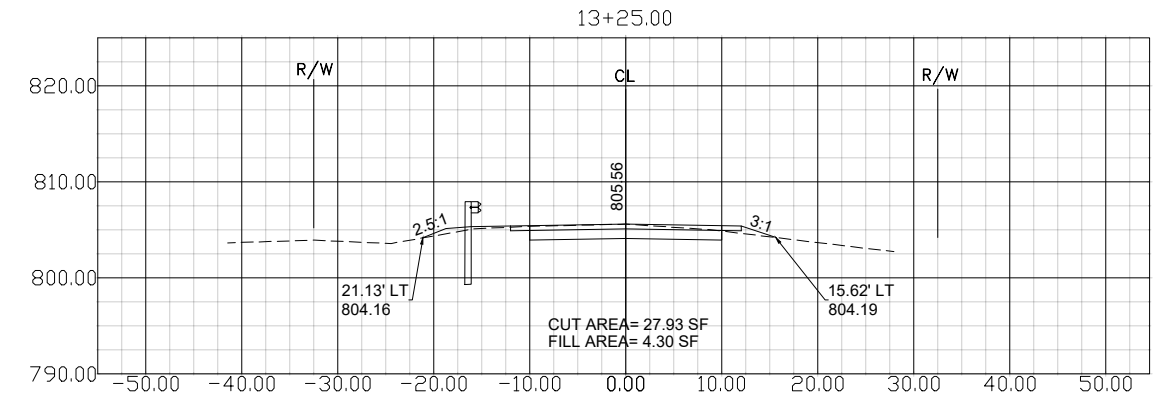
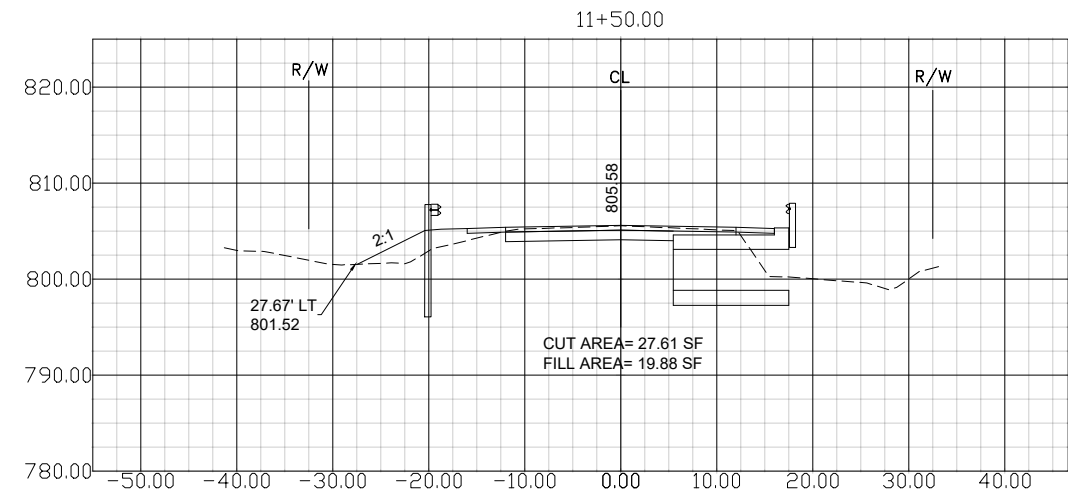
SCALE: SHEET NO. OF SHEETS STA. TO STA.

ROUTE	SECTION	COUNTY	TOTAL SHEETS	SHEET NO.
40	1900671-00-BR	WINNEBAGO	8	7
PROJECT ILLINOIS			CONTRACT NO. 85715	

DATE	
BY	
SURVEYED	
BLUOLDED	
ALIGNED & CHECKED	
CONVERTED TO DATUM	
NO. _____	
PLAN	
NOTE BOOK	
NO. _____	

DATE	
BY	
SURVEYED	
BLUOLDED	
GRADES CHECKED	
STRUCTURE NOTATIONS CHECKED	
NO. _____	
PROFILE	
NOTE BOOK	
NO. _____	

MODEL:Default
FILE NAME:R:\Prj County7710 Winnebago County - Yale Bridge Rd Culvert\CADD\CADD Civil\7710 WORKING DRAWING.DWG



DESIGNED -	REVISIONS -
DRAWN -	REVISIONS -
CHECKED -	REVISIONS -
DATE -	REVISIONS -
DESIGNED -	REVISIONS -
DRAWN -	REVISIONS -
CHECKED -	REVISIONS -
DATE -	REVISIONS -

CHASTAIN & ASSOCIATES LLC
CONSULTING ENGINEERS

6832 STALTER DRIVE, SUITE 100
ROCKFORD, IL 61108
PHONE: 815-489-0050
FAX: 815-489-0050
WWW.CHASTAINENGINEERS.COM

CROSS SECTIONS

SCALE: SHEET OF SHEETS STA. TO STA.

RTE.	SECTION	COUNTY	TOTAL SHEETS	SHEET NO.
40	19-00871-00-BR	WINNEBAGO	8	8
ILLINOIS FED. AID PROJECT			CONTRACT NO. 85715	