

STATE OF ILLINOIS  
DEPARTMENT OF TRANSPORTATION

FOR INDEX OF SHEETS, SEE SHEET NO. 2

PROJECT IS LOCATED WITHIN WILMINGTON TOWNSHIP AND RICH TOWNSHIP, AND THE VILLAGES OF RICHTON PARK, MATTESON.

TRAFFIC DATA

INTERSTATE-57

ADT = 60900 (2019)

POSTED SPEED LIMIT = 70 MPH

INTERSTATE-55

ADT = 53300 (2019)

POSTED SPEED LIMIT = 70 MPH

PROPOSED  
HIGHWAY PLANS

ROUTES: FAI 55 & FAI 57 (55, I-57)  
SECTION: 2021-138-BP

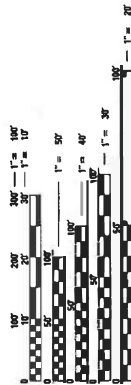
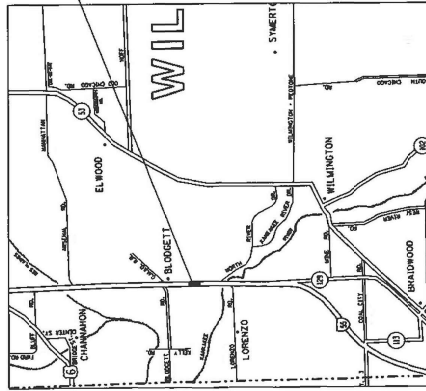
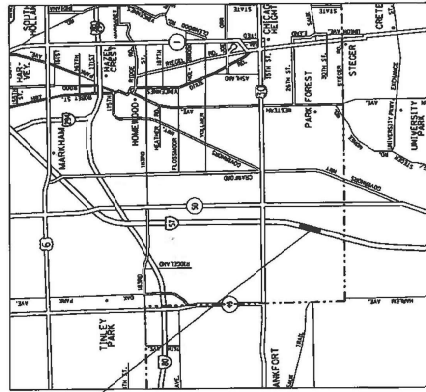
PROJECT: NHPP-PUQP (908)

BRIDGE PAINTING  
COOK & WILL COUNTY

C-91-012-22

LOCATION 1  
SN 018-0058  
I-57 SB AT RR

LOCATION 2  
SN 018-0058  
I-57 NB AT RR



FULL SIZE PLANS HAVE BEEN PREPARED USING STANDARD ENGINEERING SCALES. REDUCED SIZED PLANS WILL NOT CONFORM TO STANDARD SCALES. IN MAKING MEASUREMENTS ON REDUCED PLANS, THE ABOVE SCALES MAY BE USED.

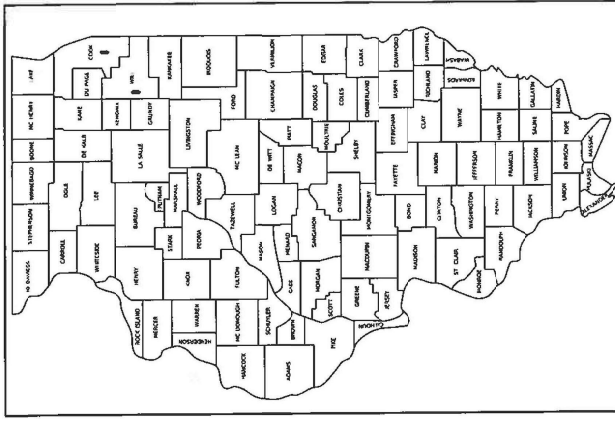
J.L.L.L.E.  
JOINT UTILITY LOCATION INFORMATION FOR EXCAVATORS  
1-800-892-0123  
OR 811

PROJECT ENGINEER: RODRIGO LEDEZMA (847) 705-4580  
PROJECT MANAGER: J. ALAIN MIDY (847) 221-3056

CONTRACT NO. 62P56

VAR. RITE	SECTION	COUNTY	SHEET
	2021-138-BP	ILLINOIS	34
* 34 of 1 = 35 TOTAL SHEET			
		CONTRACT NO.	62P56

D-91-021-22



LOCATION OF SECTION INDICATED THIS: —

STATE OF ILLINOIS  
DEPARTMENT OF TRANSPORTATION

SUBMITTED October 18, 2021  
Open Roads  
REGIONAL ENGINEER

December 10, 2021  
ENGINEER OF RECORD AND SUPERVISOR  
Stephen McCall  
DIRECTOR OF HIGHWAYS PROJECT IMPLEMENTATION 2

PRINTED BY THE AUTHORITY  
OF THE STATE OF ILLINOIS

### INDEX OF SHEETS

COVER SHEET	INDEX OF SHEETS, STATE STANDARDS AND GENERAL NOTES	SUMMARY OF QUANTITIES
1	INDEX OF SHEETS, STATE STANDARDS AND GENERAL NOTES	
2	SUMMARY OF QUANTITIES	
3	EXISTING BRIDGE PLANS (SN 016-0048)	
4 - 9	EXISTING BRIDGE PLANS (SN 016-0049)	
10 - 15	EXISTING BRIDGE PLANS (SN 099-0005)	
16 - 19	EXISTING BRIDGE PLANS (SN 099-0286)	
20 - 23	EXISTING BRIDGE PLANS (SN 099-0304)	
24 - 29	ENTRANCE AND EXIT RAMP CLOSURE DETAILS (TC-08)	
30	TRAFFIC CONTROL DETAILS FOR FREEWAY SINGLE & MULTI-LANE WEAVE (TC-09)	
31	TRAFFIC CONTROL AND PROTECTION FOR SIDE ROADS, INTERSECTIONS, AND DRIVEWAYS (TC-10)	
32	TRAFFIC CONTROL AND PROTECTION AT TURN BAYS (TO REMAIN) OPEN TO TRAFFIC (TC-14)	
33	TRAFFIC CONTROL DETAILS FOR FREEWAY SHOULDER CLOSURES AND PARTIAL RAMP CLOSURES (TC-17)	

### GENERAL PAINT NOTES

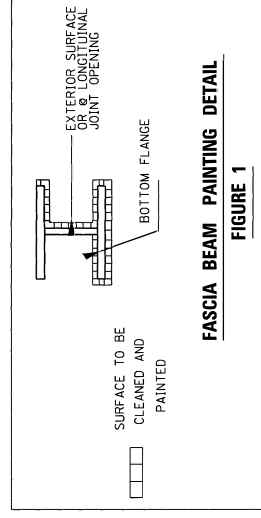
- CLEANING AND PAINTING OF THE EXISTING STRUCTURAL STEEL SHALL BE AS SPECIFIED IN THE SPECIAL PROVISION FOR "CLEANING AND PAINTING EXISTING STEEL STRUCTURES".
- ALL ITEMS (SUCH AS, BUT NOT LIMITED TO: CONDUITS, BRACKETS, AND DECK DRAINS) ATTACHED TO OUTSIDE OF THE FASCIA BEAMS SHOULD BE CLEANED AND PAINTED.
- FOR STRUCTURES NO. SN 016-0048 & SN 016-0049: ALL BEAM ENDS, BEARINGS AND OTHER STRUCTURAL STEEL WITHIN FIVE (5) FT. MEASURED ALONG THE BEAM OF EITHER SIDE OF ALL DECK JOINTS, SHALL BE CLEANED PER NEAR WHITE BLAST CLEANING SSPC-SP10. THE EXTERIOR SURFACES AND TOP AND BOTTOM OF THE BOTTOM FLANGE OF THE FASCIA BEAMS OUTSIDE THE DECK JOINTS FOR THE LENGTH OF THE BRIDGE (SEE FIGURE 1) SHALL BE CLEANED PER NEAR WHITE BLAST CLEANING SSPC-SP10.
- FOR STRUCTURE NO. SN 099-0005: ALL BEAMS, BEARINGS AND OTHER STRUCTURAL STEEL WITHIN 5 FEET MEASURED ALONG NORTH ABUTMENT AND WITHIN 10 FEET MEASURED ALONG SOUTH ABUTMENT), SHALL BE CLEANED PER NEAR WHITE BLAST CLEANING SSPC-SP10.
- FOR STRUCTURE NO. SN 099-0286: ALL BEAMS, BEARINGS AND OTHER STRUCTURAL STEEL WITHIN 8 FEET (MEASURED ALONG NORTH AND SOUTH ABUTMENTS), SHALL BE CLEANED PER NEAR WHITE BLAST CLEANING SSPC-SP10.
- FOR STRUCTURE NO. SN 099-0304: ALL BEAMS, BEARINGS AND OTHER STRUCTURAL STEEL WITHIN 5 FEET (MEASURED ALONG NORTH AND SOUTH ABUTMENTS), SHALL BE CLEANED PER NEAR WHITE BLAST CLEANING SSPC-SP10.
- THESE AREAS SHALL BE PAINTED ACCORDING TO THE REQUIREMENTS OF PAINT SYSTEM 1 -0Z/E/U. THE COLOR OF THE FINAL FINISH COAT FOR ALL INTERIOR STEEL SURFACES SHALL BE GRAY, MUNSELL NO 5B 7/1. A MINIMUM OF 1 AIR MONITOR AT 016-0048 AND 016-0049 WILL BE REQUIRED TO MONITORE ABRASIVE BLASTING OPERATIONS. SEE SPECIAL PROVISIONS FOR "CONTAINMENT AND DISPOSAL OF LEAD PAINT CLEANING RESIDUE".

### STATE STANDARDS

STANDARD NO.	DESCRIPTION
701011-04	OFF-ROAD MOVING OPERATION 2L, 2W, DAY ONLY
701011-05	OFF-ROAD OPERATIONS, MULTILANE, 15' TO 24" FROM PAVEMENT EDGE
701400-09	APPROACH TO LANE CLOSURE, FREEWAY/EXPRESSWAY
701401-13	LANE CLOSURE, FREEWAY/EXPRESSWAY
701411-09	LANE CLOSURE, MULTILANE, AT ENTRANCE OR EXIT RAMP FOR SPEEDS > 45MPH
701428-01	TRAFFIC CONTROL SETUP AND REMOVAL, FREEWAY/EXPRESSWAY
701446-11	TWO LANE CLOSURE, FREEWAY/EXPRESSWAY
701901-08	TRAFFIC CONTROL DEVICES

### GENERAL NOTES

- BEFORE STARTING ANY EXCAVATION, THE CONTRACTOR SHALL CALL "JULIE," AT (800) 892-0123 OR 811 FOR FIELD LOCATIONS OF BURIED ELECTRIC, TELEPHONE AND GAS UTILITIES. 48 HOUR NOTIFICATION IS REQUIRED.
- THE CONTRACTOR SHALL COORDINATE CONSTRUCTION ACTIVITIES WITH UTILITY COMPANIES, TOWNSHIP OF WILMINGTON, RICH AND VILLAGES OF RICHTON PARK & MATTHEWS.
- PLAN DIMENSIONS AND DETAILS RELATIVE TO EXISTING PLANS ARE SUBJECT TO NOMINAL CONSTRUCTION VARIATIONS. THE CONTRACTOR SHALL FIELD VERIFY EXISTING DIMENSIONS AND DETAILS AFFECTING NEW CONSTRUCTION AND MAKE NECESSARY ADJUSTMENTS OR CORRECTIONS PRIOR TO OPENING OF AN EXCAVATION. SUCH CORRECTIONS SHALL BE MADE FOR PROTECTIVE WORKING CONDITIONS IN THE SCOPE OF THE WORK. HOWEVER, THE CONTRACTOR WILL BE PAID FOR THE QUANTITY ACTUALLY FURNISHED BASED AT THE UNIT PRICE BID FOR THE WORK.
- THE CONTRACTOR WILL NOT BE ALLOWED TO SET UP A YARD OR FIELD OFFICE ON STATE PROPERTY WITHOUT WRITTEN PERMISSION FROM THE DEPARTMENT.
- THE CONTRACTOR SHALL CONTACT THE DISTRICT ONE TRAFFIC CONTROL SUPERVISOR AT KALPANKANNAN-HOSADUR@ILLINOIS.GOV FOR ARTERIALS AND (847)705-4151 FOR EXPRESSWAYS A MINIMUM OF 72 HOURS IN ADVANCE OF BEGINNING WORK.
- THESE PLANS HAVE BEEN PREPARED FROM NOTES RECEIVED FROM THE BUREAU OF MAINTENANCE BRIDGE INSPECTORS.
- IT SHALL BE THE CONTRACTOR'S RESPONSIBILITY TO PROTECT AND MAINTAIN THE EXISTING BRIDGE LIGHTING AT ANY LOCATIONS THAT LIGHTING IS ENCOUNTERED ADJACENT TO AN AREA TO BE CLEANED AND PAINTED.
- THE CONTRACTOR SHALL BE REQUIRED TO PROVIDE ACCESS TO ABUTTING PROPERTY AT ALL TIMES DURING THE CONSTRUCTION OF THIS PROJECT.
- WHEN ARTIFICIAL LIGHTING IS UTILIZED IN NIGHTTIME OPERATIONS, THE CONTRACTOR SHALL EXERCISE THE HIGHEST PRECAUTIONS PREVENTING ADVERSE VISIBILITY TO THE ADJACENT PUBLIC AND ADJACENT RESIDENTIAL AREAS.
- THE CONTRACTOR SHALL REQUEST AND GAIN THE APPROVAL FROM THE ILLINOIS DEPARTMENT OF TRANSPORTATION'S EXPRESSWAY TRAFFIC OPERATIONS ENGINEER AT WWW.IDOTILCS.COM TWENTY FOUR (24) HOURS IN ADVANCE OF ALL DAILY LANE, RAMP AND SHOULDER CLOSURES. THIS ADVANCE NOTIFICATION IS CALCULATED BASED ON WORKWEEK OF MONDAY THROUGH FRIDAY AND SHALL NOT INCLUDE WEEKENDS OR HOLIDAYS.
- THE CONTRACTOR SHALL TAKE NECESSARY PRECAUTIONS WHEN WORKING NEAR THE ABUTMENTS IF ELECTRICAL JUNCTIONS BOXES AND ATTACHED CONDUITS ARE PRESENT.
- DO NOT SCALE PLANS FOR CONSTRUCTION DIMENSIONS.
- TC-22 TO BE USE ONLY FOR ARTERIAL.



INDEX OF SHEETS, STATE STANDARDS GENERAL NOTES AND GENERAL PAINT NOTES		STATE OF ILLINOIS DEPARTMENT OF TRANSPORTATION		DESIGNED -		REVISED -	
VAR. SITE	SECTION	COUNTY	TOTAL SHEET	USER NAME	DESIGNED	REVISION	REVISION
VAR.	VAR.	VAR.	SHEETS	PROJECT	CHECKED	CHECKED	CHECKED
SCALE:		SHEET		DATE		DATE	
	2021-138-RP	WARREN	62756	10/13/24			
		ILLINOIS	62756	10/13/24			
		ILLINOIS	62756	10/13/24			

REV-SEP

SUMMARY OF QUANTITIES		CONSTRUCTION TYPE CODE		SUMMARY OF QUANTITIES		CONSTRUCTION TYPE CODE		
CODE NO	ITEM	UNIT	URBAN TOTAL QUANTITIES	0047 BRIDGE 1 016-0048 30% FED. STATE 10% STATE COOK	0047 BRIDGE 2 016-0049 30% FED. STATE 10% STATE COOK	0047 BRIDGE 3 099-0005 30% FED. STATE 10% STATE COOK	0047 BRIDGE 4 099-0286 30% FED. STATE 10% STATE COOK	0047 BRIDGE 5 099-0304 30% FED. STATE 10% STATE COOK
67000400	ENGINEER'S FIELD OFFICE, TYPE A	CAL MO	12	2.4	2.4	2.4	2.4	2.4
67100100	MOBILIZATION	L SUM	1	0.2	0.2	0.2	0.2	0.2
X5060603	CONTAINMENT AND DISPOSAL OF NON-LEAD PAINT CLEANING RESIDUES NO. 3	L SUM	1		1			
X5060604	CONTAINMENT AND DISPOSAL OF NON-LEAD PAINT CLEANING RESIDUES NO. 4	L SUM	1			1		
X5060605	CONTAINMENT AND DISPOSAL OF NON-LEAD PAINT CLEANING RESIDUES NO. 5	L SUM	1				1	
XT011015	TRAFFIC CONTROL AND PROTECTION (EXPRESSWAYS)	L SUM	1	0.2	0.2	0.2	0.2	0.2
Z007101	CONTAINMENT AND DISPOSAL OF LEAD PAINT CLEANING RESIDUES NO. 1	L SUM	1					
Z007102	CONTAINMENT AND DISPOSAL OF LEAD PAINT CLEANING RESIDUES NO. 2	L SUM	1		1			
Z0010501	CLEANING AND PAINTING STEEL BRIDGE NO. 1	L SUM	1					
Z0010502	CLEANING AND PAINTING STEEL BRIDGE NO. 2	L SUM	1		1			
Z0010503	CLEANING AND PAINTING STEEL BRIDGE NO. 3	L SUM	1					
Z0010504	CLEANING AND PAINTING STEEL BRIDGE NO. 4	L SUM	1					
Z0010505	CLEANING AND PAINTING STEEL BRIDGE NO. 5	L SUM	1					
Z0048665	RAILROAD PROTECTIVE LIABILITY INSURANCE	L SUM	1	0.25	0.25	0.25	0.25	0.25
Z0076600	TRAINEES	HOURS	500					
Z0076604	TRAINEES - TRAINING PROGRAM GRADUATE	HOURS	500					

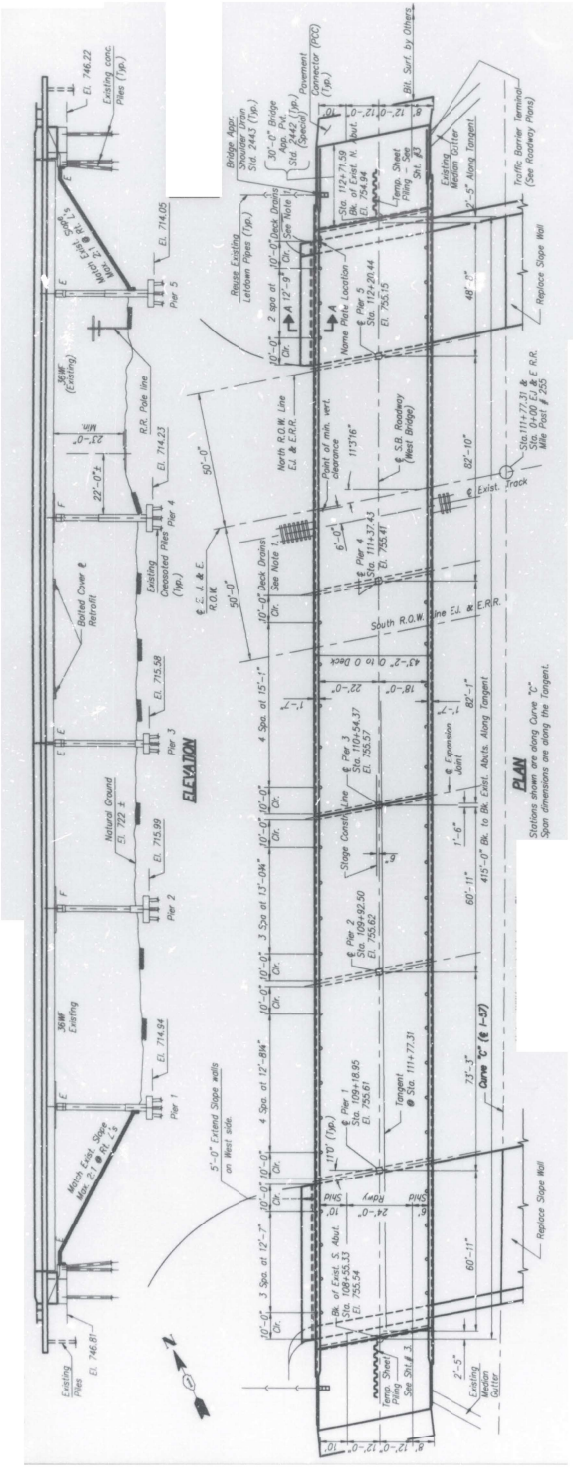
STATE OF ILLINOIS  
DEPARTMENT OF TRANSPORTATION

FILE NAME: USER NAME: DESIGNED: REVISIONS: 0042  
 PLOT SCALE: 1/8" = 1'-0" CHECKED: DATE: 07/20/2008

SCALE: SHEET NO. OF SHEETS TO STA. SUMMARY OF QUANTITIES SHEETS TO STA. CONTRACT NO. 62P56

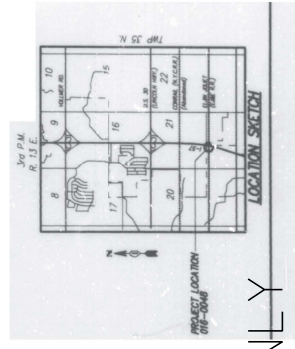
0042 TOTAL SHEETS 0042

FOR INFORMATION ONLY



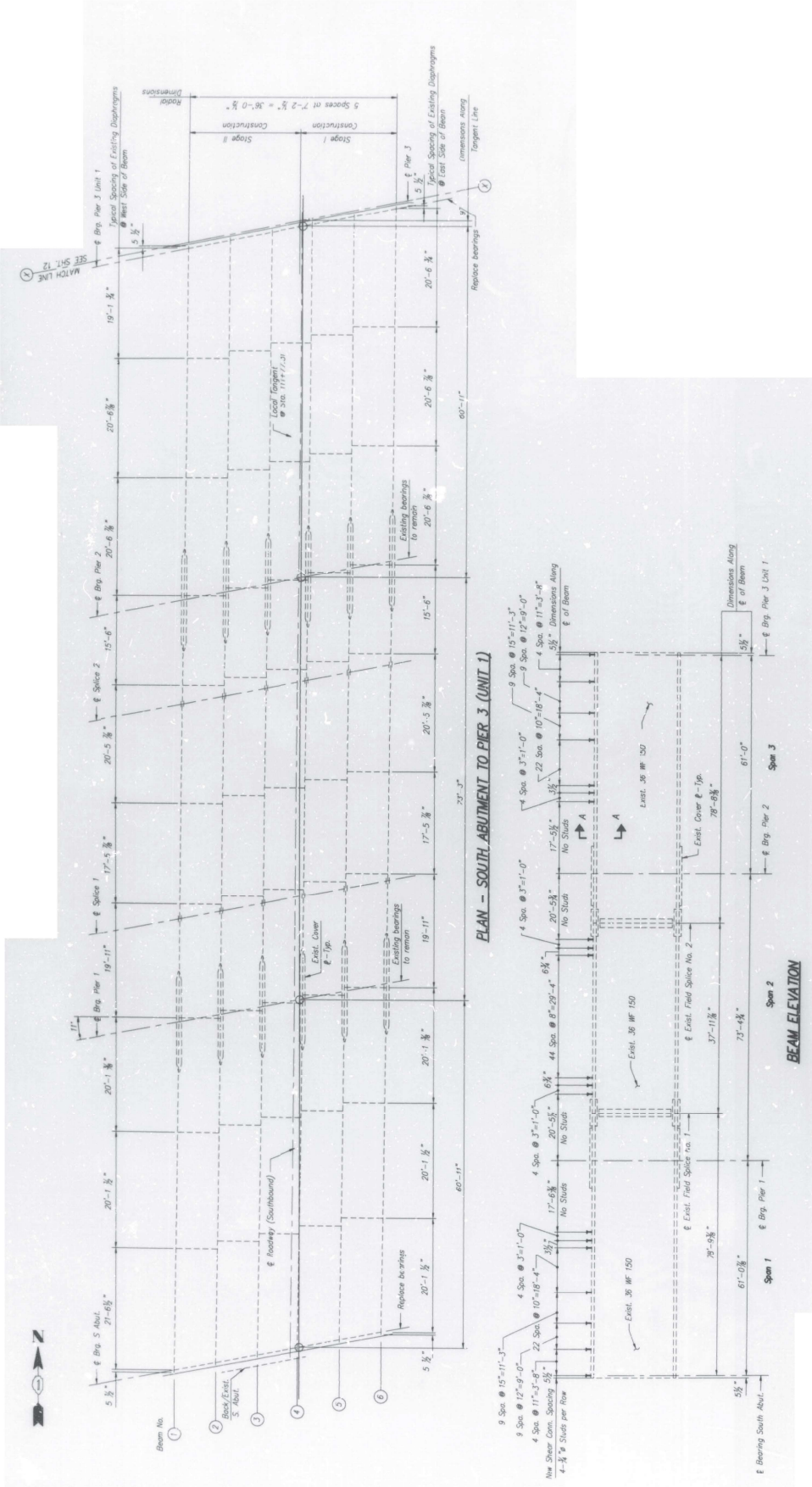
**PLAN**

Stations shown are along Curve "A"  
 Span dimensions are along the tangent.





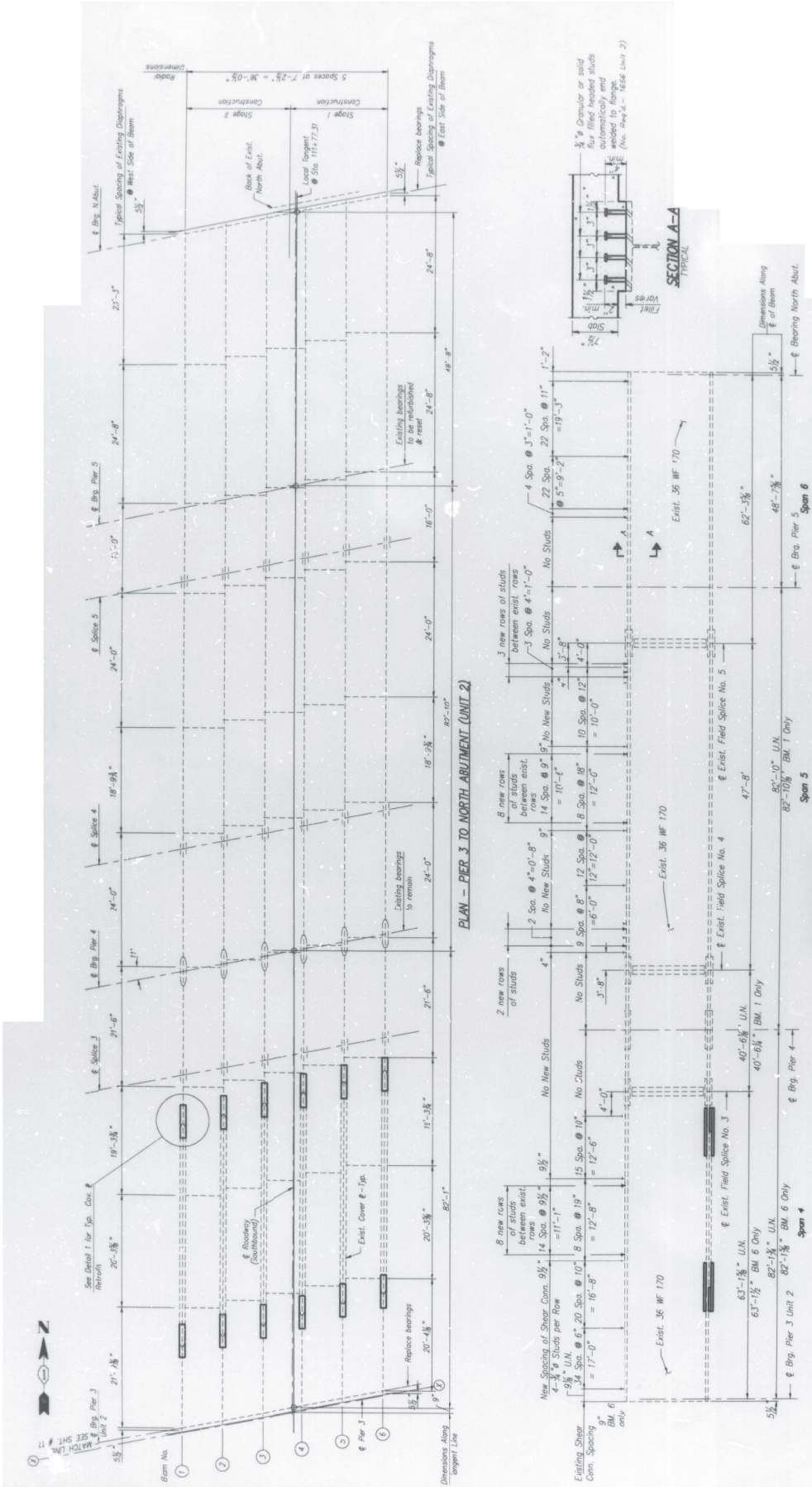




FOR INFORMATION ONLY

USER TIME	DESIGNED	REVISIONS	NO. OF SHEETS	SECTION	COUNTY	SHEET NO.
DRAWN	DRAWN	REVISIONS	VARIOUS	2021-13C-BP	VARIOUS	34
CHECKED	CHECKED	REVISIONS	CONTRACT NO. 672P56			6
DATE	DATE	REVISIONS				
STATE OF ILLINOIS		SCALE: SHEET OF SHEETS		TO STA.		
DEPARTMENT OF TRANSPORTATION		LOCATION 1: BRIDGE FRAMING PLAN		CONTRACT NO. 672P56		
		I-57 SB BR (SN: 016-2046)		EILHOSI TRD-AD PROJECT		

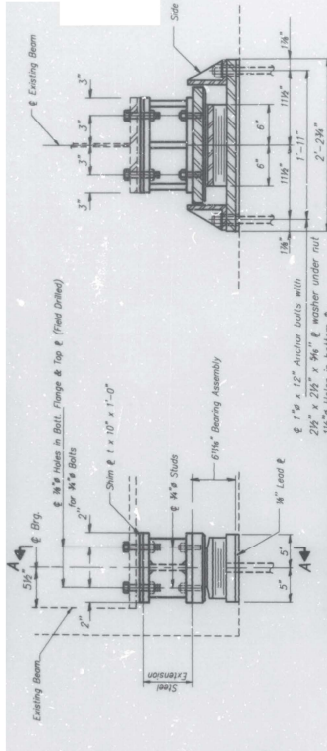




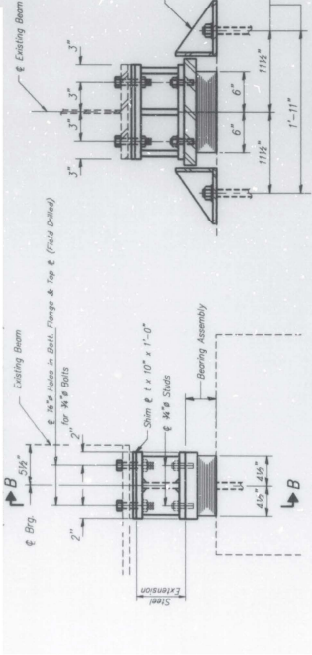
FOR INFORMATION ONLY

USER TIME	DESIGNED	REVISIONS	LOCATION 1: BRIDGE FRAMING PLAN	SECTION	COUNTY	SHEET
DRAWN	REVISIONS	VARIOUS	I-57 SB BR (SIC 016-0048)	200-I-58-BP	VARIOUS	34
CHECKED	REVISIONS	CONTRACT NO. 62P56				7
DATE	REVISIONS	ILLINOIS TPO-AD PROJECT				

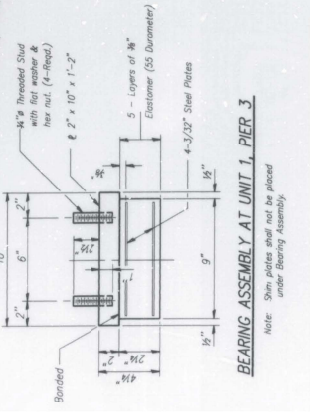
STATE OF ILLINOIS DEPARTMENT OF TRANSPORTATION  
 SCALE: SHEET OF SHEETS  
 TO S.T.A. FROM S.T.A.



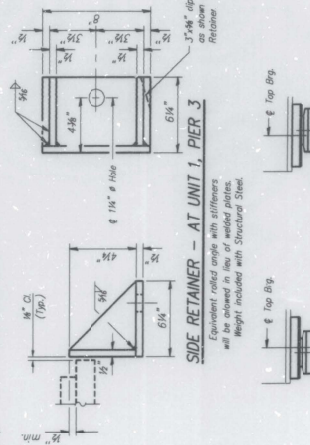
ELEVATION A-A  
TYPE J TFE ELASTOMERIC EXP. BRG. AT UNIT 1, SOUTH ABUTMENT  
(6 Required)



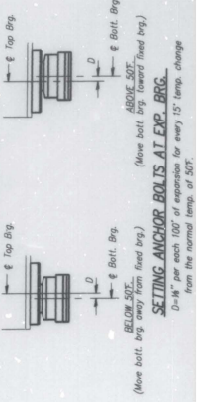
ELEVATION B-B  
TYPE I ELASTOMERIC EXP. BRG. AT UNIT 1, PIER 3  
(6 Required)



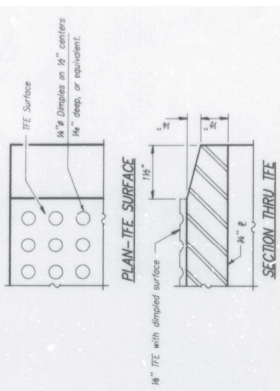
BEARING ASSEMBLY AT UNIT 1, PIER 3  
Note: Shim plates shall not be placed under bearing assembly.



SIDE RETAINER - AT UNIT 1, PIER 3  
Equivalent raised angle with stiffeners will be achieved in lieu of welded plates. Weight included with Structural Steel.

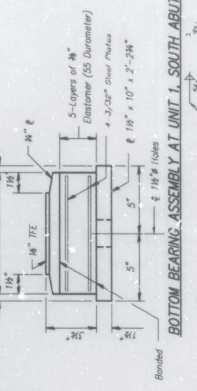


SETTING ANCHOR BOLTS AT EXP. BRG.  
1/2" dia. per each 100' of expansion for every 15' temp. change from the normal temp. of 50°.

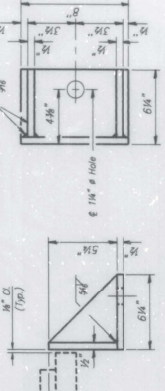


PLAN-TFE SURFACE  
SECTION THRU TFE  
1/4" TFE with dimpled surface  
1/4" Dia. Holes in 1/4" centers  
1/4" deep, or equivalent.

TOP BEARING ASSEMBLY AT UNIT 1, SOUTH ABUT.



BOTTOM BEARING ASSEMBLY AT UNIT 1, SOUTH ABUT.



SIDE RETAINER AT UNIT 1, SOUTH ABUT.  
Equivalent raised angle with stiffeners will be achieved in lieu of welded plates. Weight included with Structural Steel.

FOR INFORMATION ONLY

STATE OF ILLINOIS  
DEPARTMENT OF TRANSPORTATION

LOCATION 1: BRIDGE BEARING DETAILS  
I-57 SB RR (SR. 016-0048)

USER TIME	DESIGNED	
DRAWN		
CHECKED		
DATE		

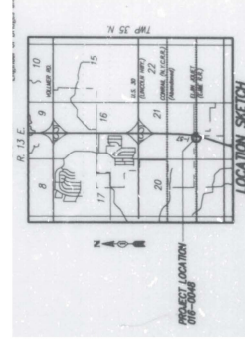
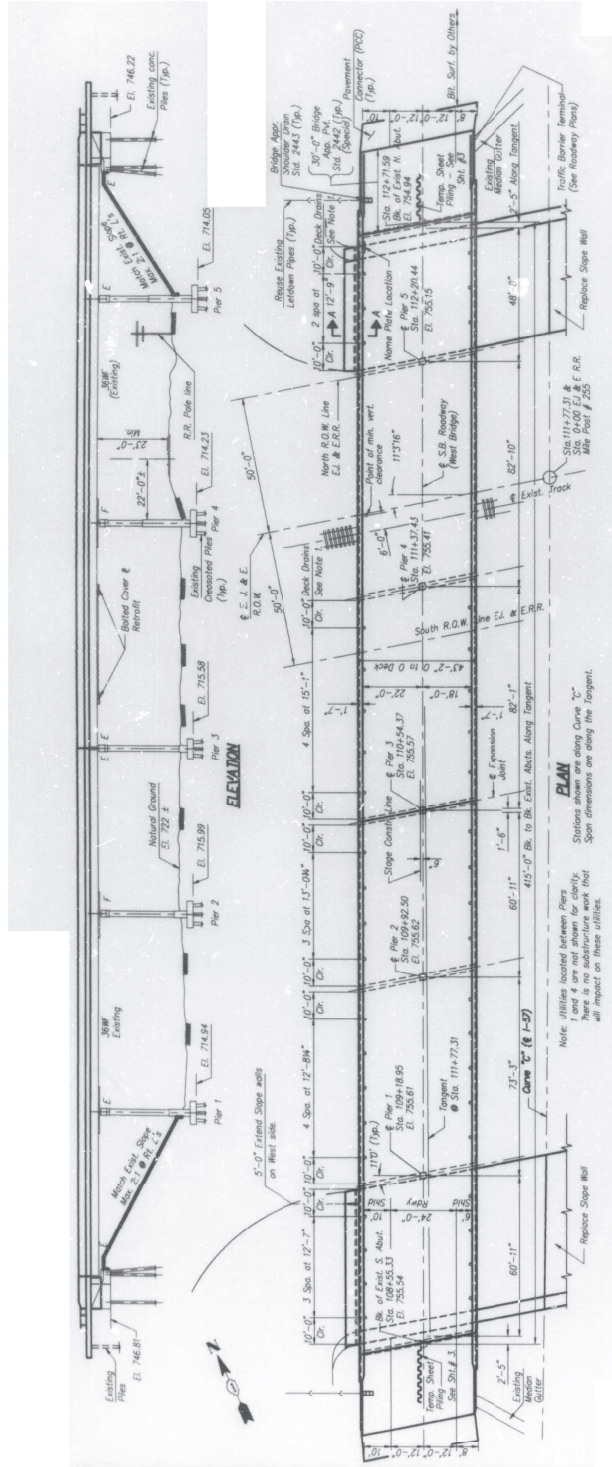
SCALE:	SHEET	OF	SHEETS	STA.	TO STA.

REVISION					
REVISION					
REVISION					
REVISION					

NO. SHEETS	34	COUNTY	WARREN	SECTION	2021-138-BP
NO. SHEETS	8	WARD			
CONTRACT NO.	672756	ELUMOSI	TRD-ADP	PROJECT	







FOR INFORMATION ONLY

USER TIME	DESIGNED	REVISIONS	STATE OF ILLINOIS	SECTION	COUNTY	SHEET
DATE	DRAWN	REVISIONS	DEPARTMENT OF TRANSPORTATION	2021-13B-BP	VARIOUS	10
SCALE	CHECKED	REVISIONS				19
DATE	DATE	REVISIONS				18
						17
						16
						15
						14
						13
						12
						11
						10
						9
						8
						7
						6
						5
						4
						3
						2
						1

LOCATION 2: BRIDGE PLANS AND ELEVATION  
 I-57 NB RR (SR. 016-0049)

STATE OF ILLINOIS  
 DEPARTMENT OF TRANSPORTATION

REVISIONS

DATE

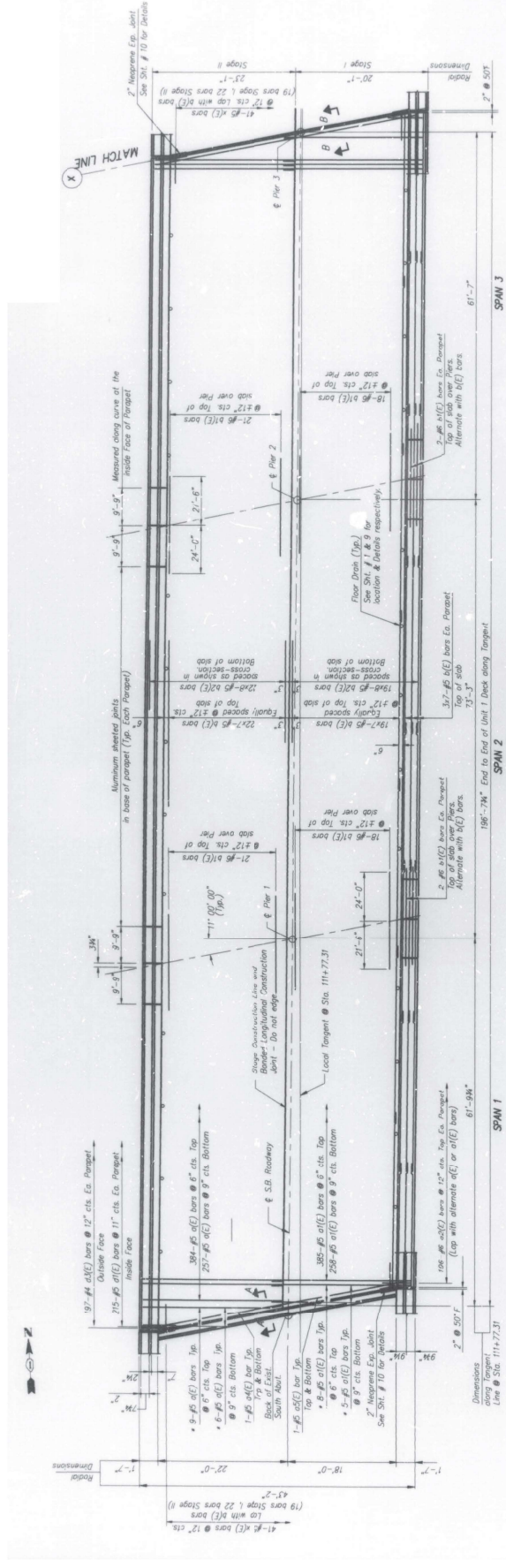
SCALE

SHEET OF SHEETS

CONTRACT NO. 627256

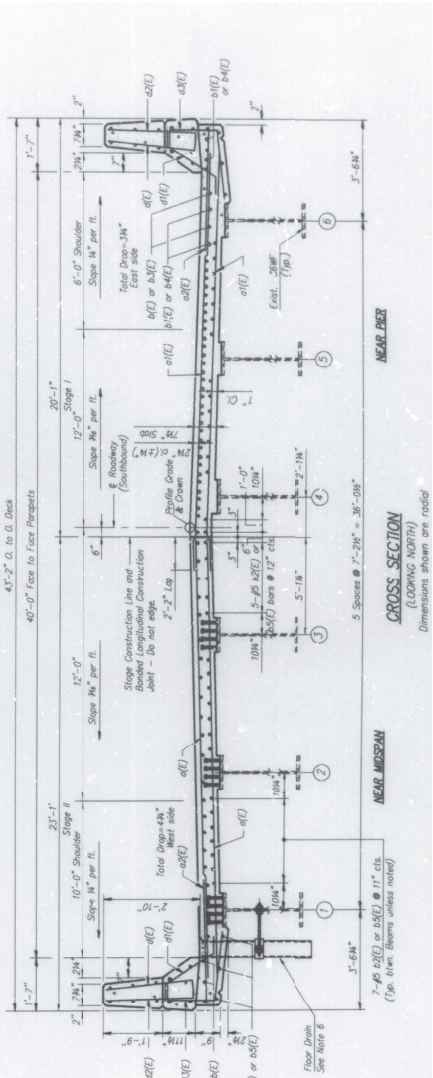
ILLINOIS T&E PROJECT





PLAN - SOUTH ABUTMENT TO PIER 3 (UNIT 1)

\* Order d(E) & o(E) bars full length.   
 \* Order a(E) bars in alternate ends.   
 \* Order b(E) bars in opposite ends.



CROSS SECTION (LOADING NORTH)   
 Dimensions shown are radial

FOR INFORMATION ONLY

USER TIME	DESIGNED	REVISION	STATE OF ILLINOIS	SECTION	COUNTY	SHEET
DRAWN	REVISION	REVISION	DEPARTMENT OF TRANSPORTATION	2024-138-B*	VARIOUS	11
CHECKED	REVISION	REVISION				13
DATE	DATE	DATE				11
						CONTRACT NO. 62P256
						ILLINOIS TPO-AD PROJECT

LOCATION: 2: EXISTING BRIDGE CROSS SECTION AND DETAILS   
 I-57 NB RR (SR 016-8049)

SCALE: SHEET OF SHEETS STA. TO STA.



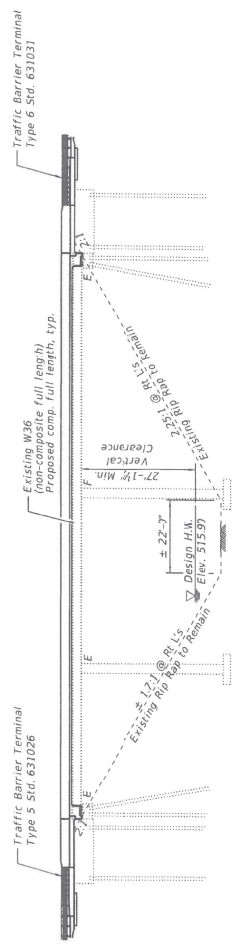




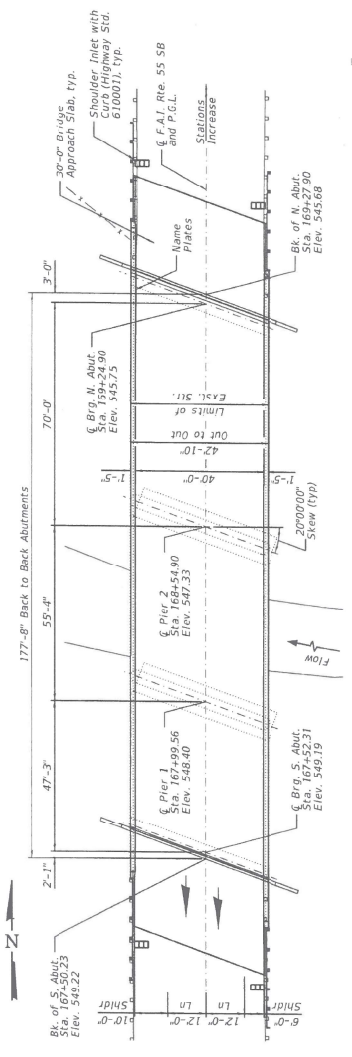




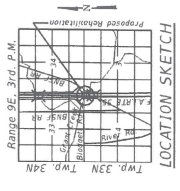




ELEVATION



PLAN



LOCATION SKETCH

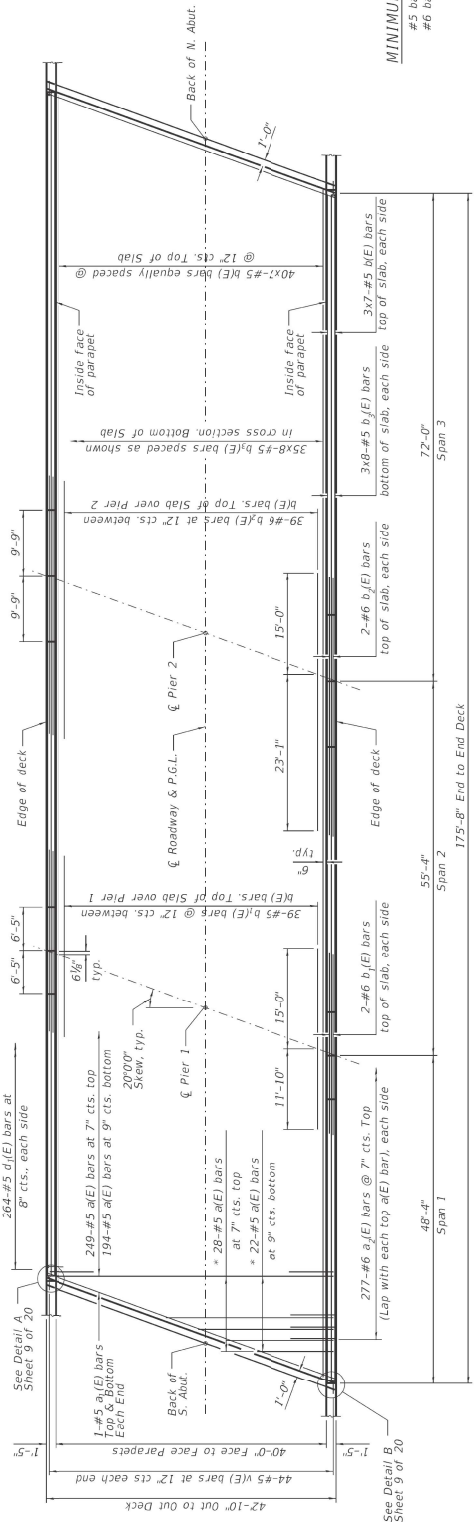
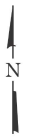
FOR INFORMATION ONLY

USER TIME = 10/26/2021 10:26:00 AM	DESIGNED -	REVISIONS	STATE OF ILLINOIS	SECTION	COUNTY	SHEET
	DRAWN -	REVISIONS	DEPARTMENT OF TRANSPORTATION	2021-138-8P	VARIOUS	34
DATE = 10/26/2021	CHECKED -	REVISIONS				16
	DATE					CONTRACT NO. 672P56
						ILLINOIS TPO-AD PROJECT

LOCATION 3: BRIDGE PLANS AND ELEVATION  
 I-55 SB AT GRANT GREEK (SN: 009-0005)  
 SCALE: SHEET [ ] OF [ ] SHEETS [ ] STA. [ ] TO STA. [ ]

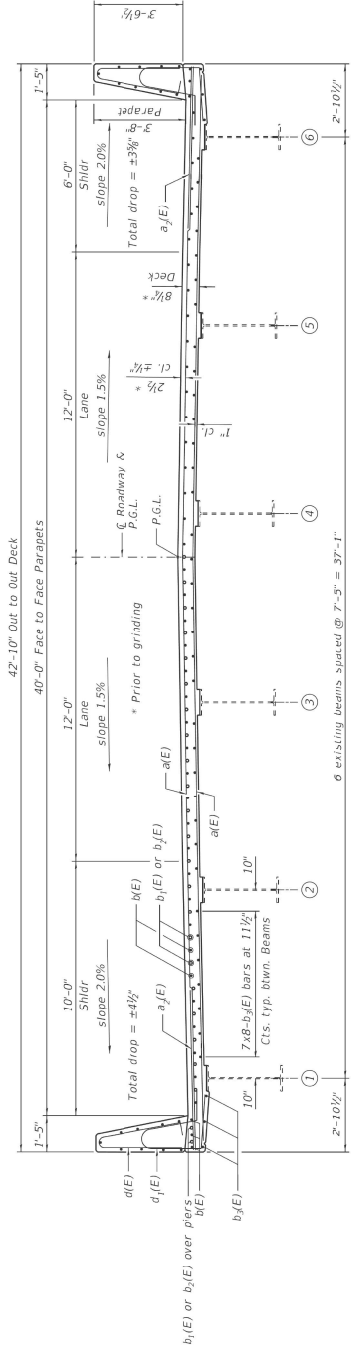


\* Order a(E) bars full length. Cut to fit skew and use remainder of bars in opposite end.



**MINIMUM BAR LAP**  
 #5 bar = 3'-0"  
 #6 bar = 3'-7"

**PLAN**



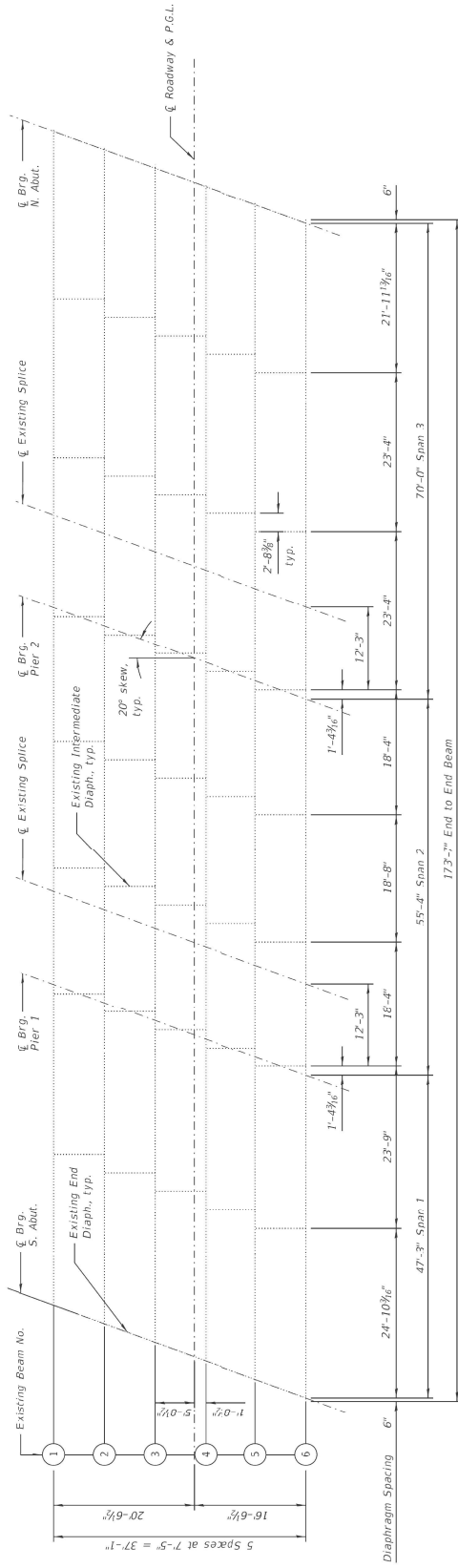
**CROSS SECTION**  
 (Looking North)

**FOR INFORMATION ONLY**

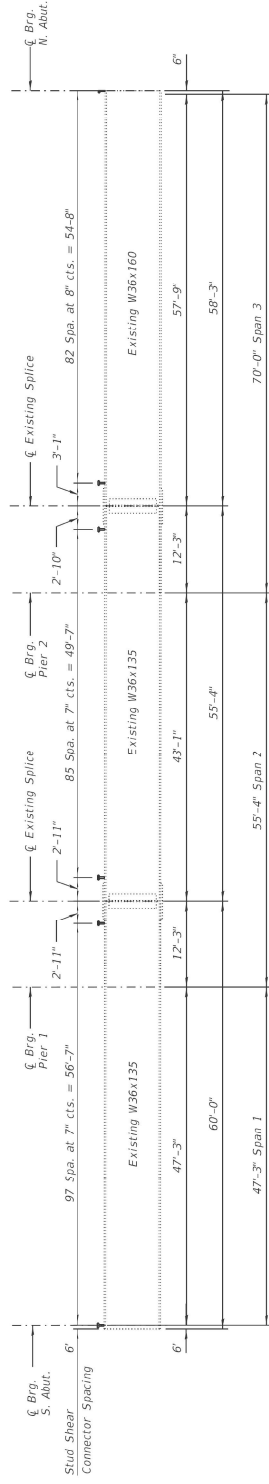
USER TIME	DESIGNED	REVISION	STATE OF ILLINOIS	SECTION	CONTRACT NO.
DRAWN	REVISION	REVISION	DEPARTMENT OF TRANSPORTATION	2001-384P	67256
PLOT SCALE	CHECKED	REVISION		VARIOUS	VARIOUS
PLOT DATE	DATE	REVISION		2001-384P	CONTRACT NO. 67256
				SECTION	CONTRACT NO.
				2001-384P	67256
				VARIOUS	VARIOUS
				CONTRACT NO.	67256

LOCATION: 3: BRIDGE CROSS SECTION AND DETAILS  
 I-55 SB AT GRANT GREEK (SN: 099-1005)

SCALE: SHEET OF SHEETS STA. TO STA.



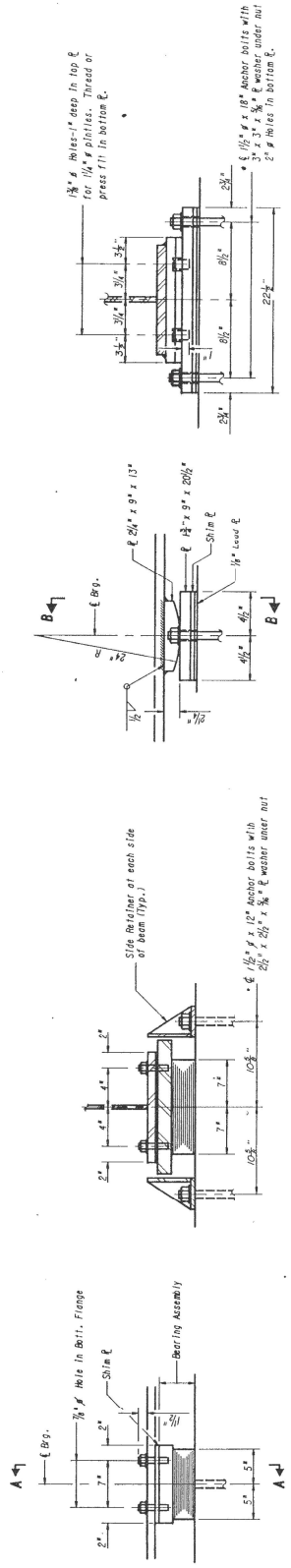
**FRAMING PLAN**



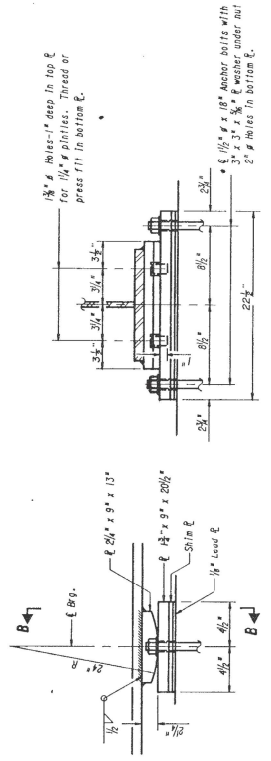
**BEAM ELEVATION**

FOR INFORMATION ONLY

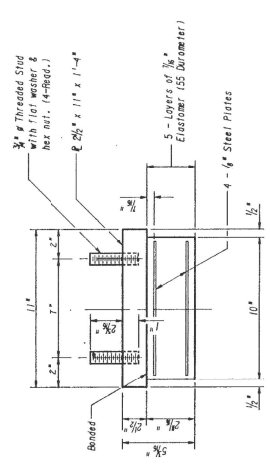
USER TIME = 10/12/2021 PLOT SCALE = 1/8" = 1'-0" PLOT DATE = 10/12/2021	DESIGNED - DRAWN - CHECKED - DATE -	REVISIONS 1 2 3 4 5 6	REVISIONS 1 2 3 4 5 6	REVISIONS 1 2 3 4 5 6	REVISIONS 1 2 3 4 5 6	STATE OF ILLINOIS DEPARTMENT OF TRANSPORTATION	LOCATION: 3-BRIDGE FRAMING PLAN I-55 SB AT GRANT CREEK (SR: 095-0005)	SHEET 51 OF 51	CONTRACT NO. 67P56
---	--	---	---	---	---	---	--	----------------	--------------------



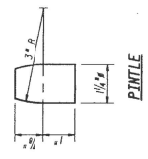
**ELEVATION**  
**SECTION A-A**  
**TYPE I ELASTOMERIC EXP. BRG. AT PIER 1**  
 (6 Required)



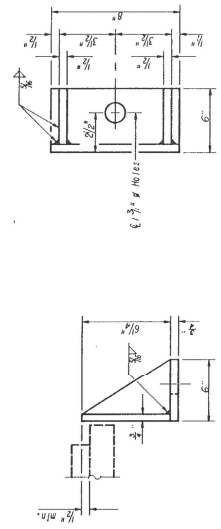
**ELEVATION**  
**SECTION B-B**  
**FIXED BEARING AT PIER 2**  
 (6 Required)



**BEARING ASSEMBLY**  
 Note: Shim plates shall not be placed under Bearing Assembly.



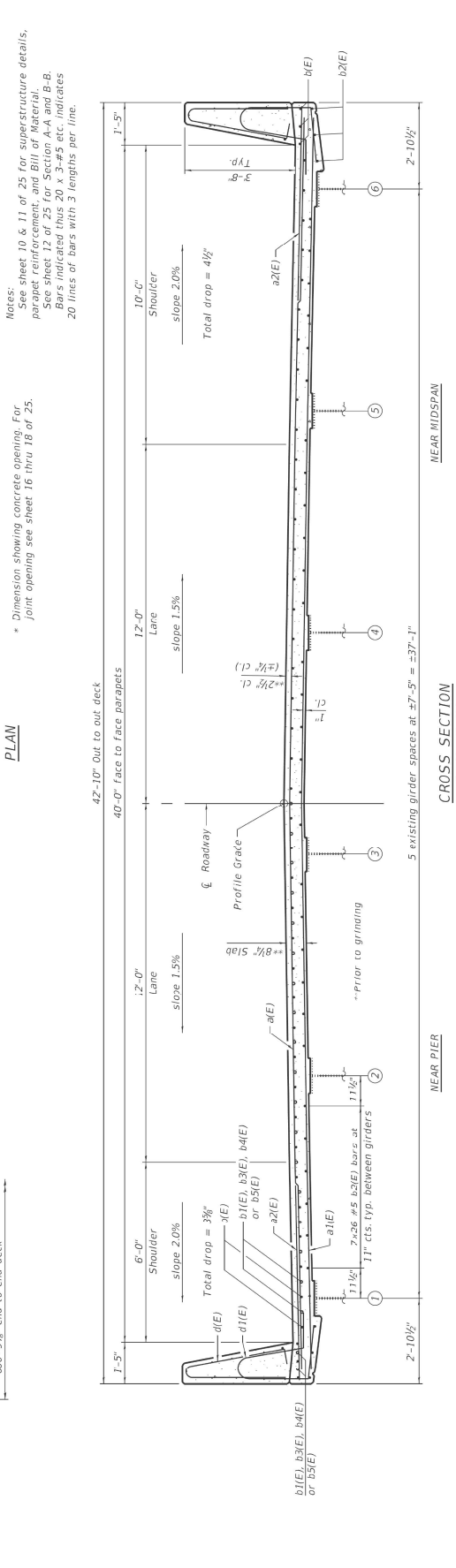
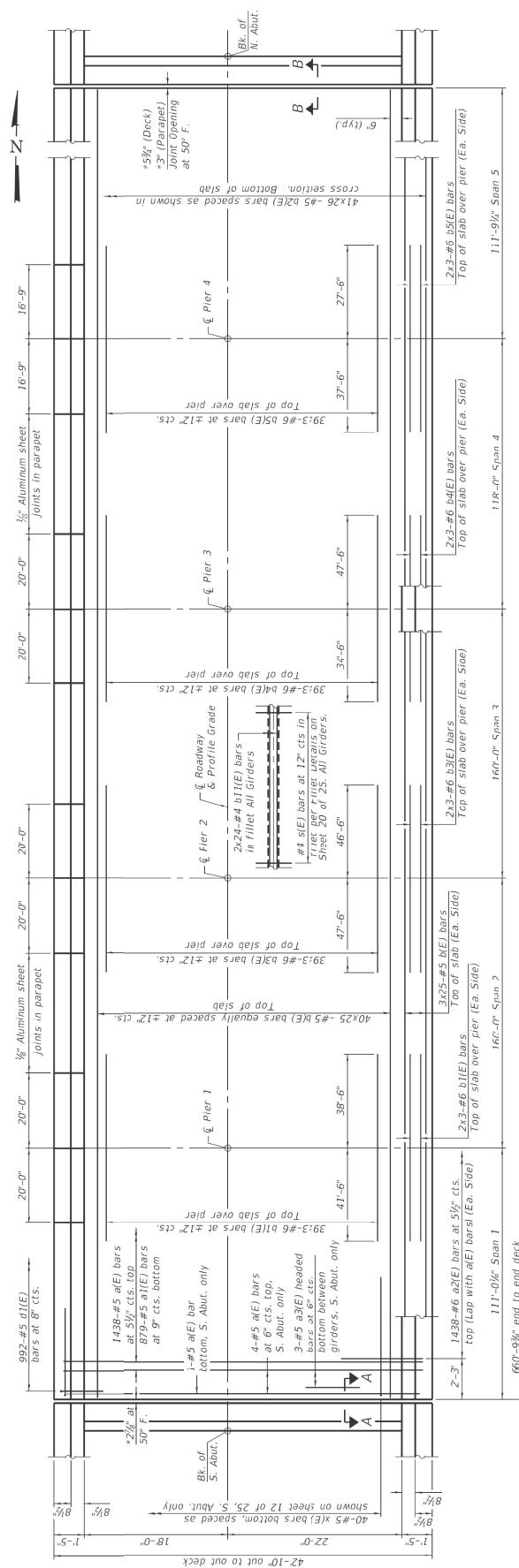
**PITILE**



FOR INFORMATION ONLY

USER TIME = 0:00:00	DESIGNED -	REVISIONS	STATE OF ILLINOIS	LOCATION 3: BRIDGE BEARING DETAILS	SECTION	COUNTY	SHEET NO.
PLOT SCALE = 1/8"=1'-0"	DRAWN -	REVISIONS	DEPARTMENT OF TRANSPORTATION	1-55 SB AT GRANT GREEK (SN: 099-0005)	2001-38-8P	VARIOUS	34
PLOT DATE = 02/20/21	CHECKED -	REVISIONS					19
	DATE						CONTRACT NO. 672P56
							ILLINOIS TPO-ADP PROJECT





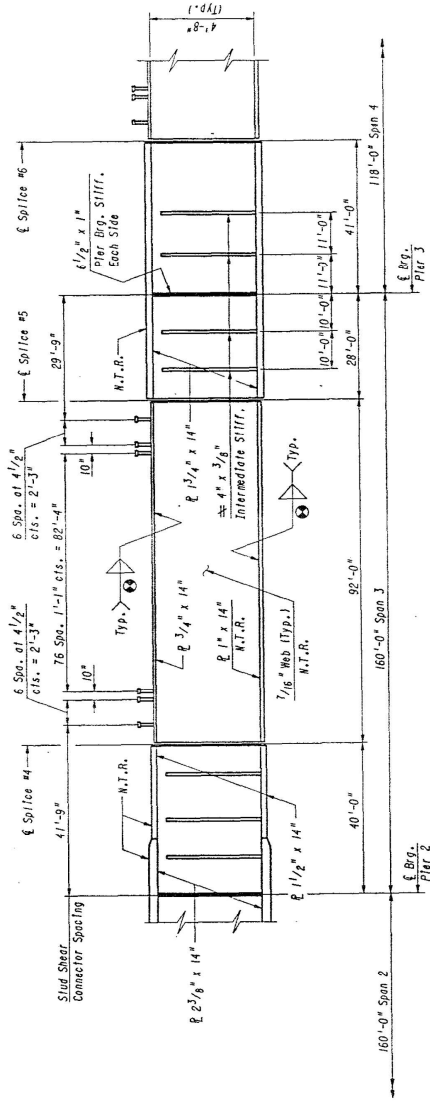
# FOR INFORMATION ONLY

USER TIME	DESIGNED	REVISIONS	SECTION	COUNTY	NO. SHEETS
DRAWN	DRAWN	REVISIONS	VARIOUS	VARIOUS	34
PLOT SCALE = 1/8"=1'-0"	CHECKED	REVISIONS	2021-138-8P	CONTRACT NO. 67P56	23
DATE = 10/20/21	DATE	REVISIONS	TO STA.	ELIMOSI TRD-AD PROJECT	
STATE OF ILLINOIS DEPARTMENT OF TRANSPORTATION			LOCATION: 4-BRIDGE CROSS SECTION AND DETAILS I-55 NB AT GRANT CREEK AND RR (SN-089-0286)		



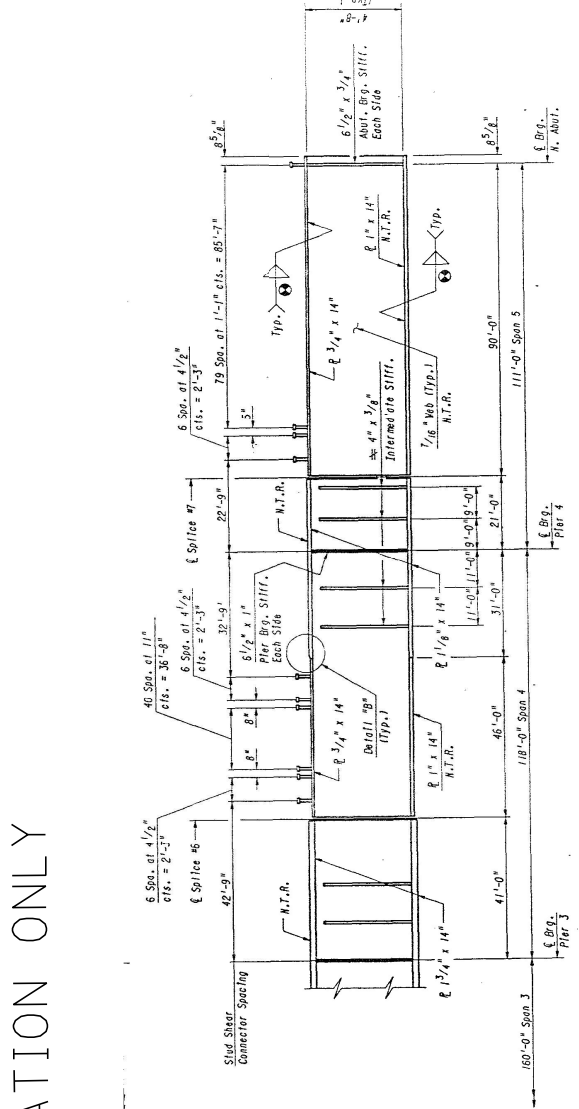


FRAMING PLAN



GIRDER ELEVATION

FOR INFORMATION ONLY



GIRDER ELEVATION

STATE OF ILLINOIS  
DEPARTMENT OF TRANSPORTATION

LOCATION 4: BRIDGE BEARING DETAILS  
I-55 NB AT GRANT CREEK AND RR (SN. 099-0286)

SCALE: SHEET OF SHEETS, STA. TO STA.

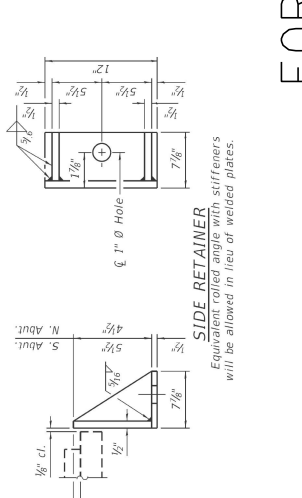
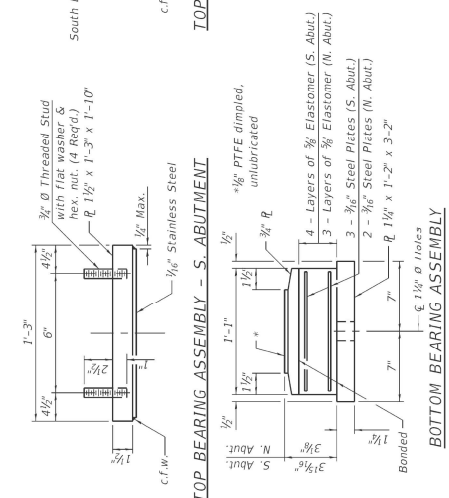
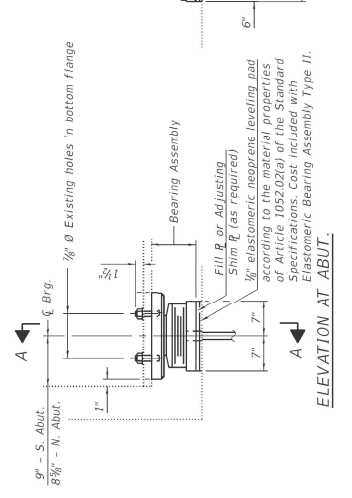
VAR.	SECTION	COUNTY	SHEET
FILE	200312824P	VARIOUS	34
			22A
			CONTRACT NO. 622P56

DESIGNED -	REVISION -
DRAWN -	REVISION -
CHECKED -	REVISION -
DATE	REVISION -

USER NAME = elg50824h  
 PROJECT = I-55/4177 E.  
 PROJECT SCALE = 1/8"=1'-0"  
 PLOT DATE = 11/06/2021

USER TIME DRAWN BY CHECKED BY DATE	DESIGNED BY DRAWN BY CHECKED BY DATE	REVISIONS REVISOR DATE	STATE OF ILLINOIS DEPARTMENT OF TRANSPORTATION		LOCATION 4: BRIDGE FRAMING PLAN I-55 NB AT GRANT CREEK AND RR (SK-039-0286)			
					SHEET NO. 1	OF SHEETS 5	STA. TO STA.	SCALE:
			SECTION	COUNTY	NO. SHEETS	SHEET NO.	CONTRACT NO. 62P56	
			VAR. VENE. WARS.	VARIOUS	24	23		
			2021-23-SP				ILLINOIS TPO-IMP PROJECT	

# FOR INFORMATION ONLY



TYPE II ELASTOMERIC EXP. BRG.

TOP BEARING ASSEMBLY - N. ABUTMENT

SECTION THRU PTFE

PLAN-PTFE SURFACE

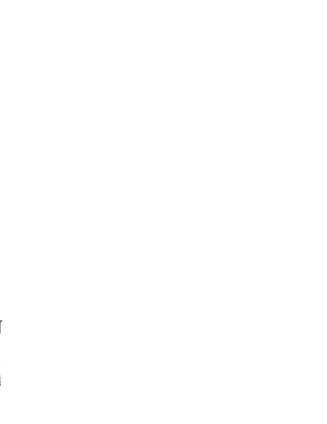
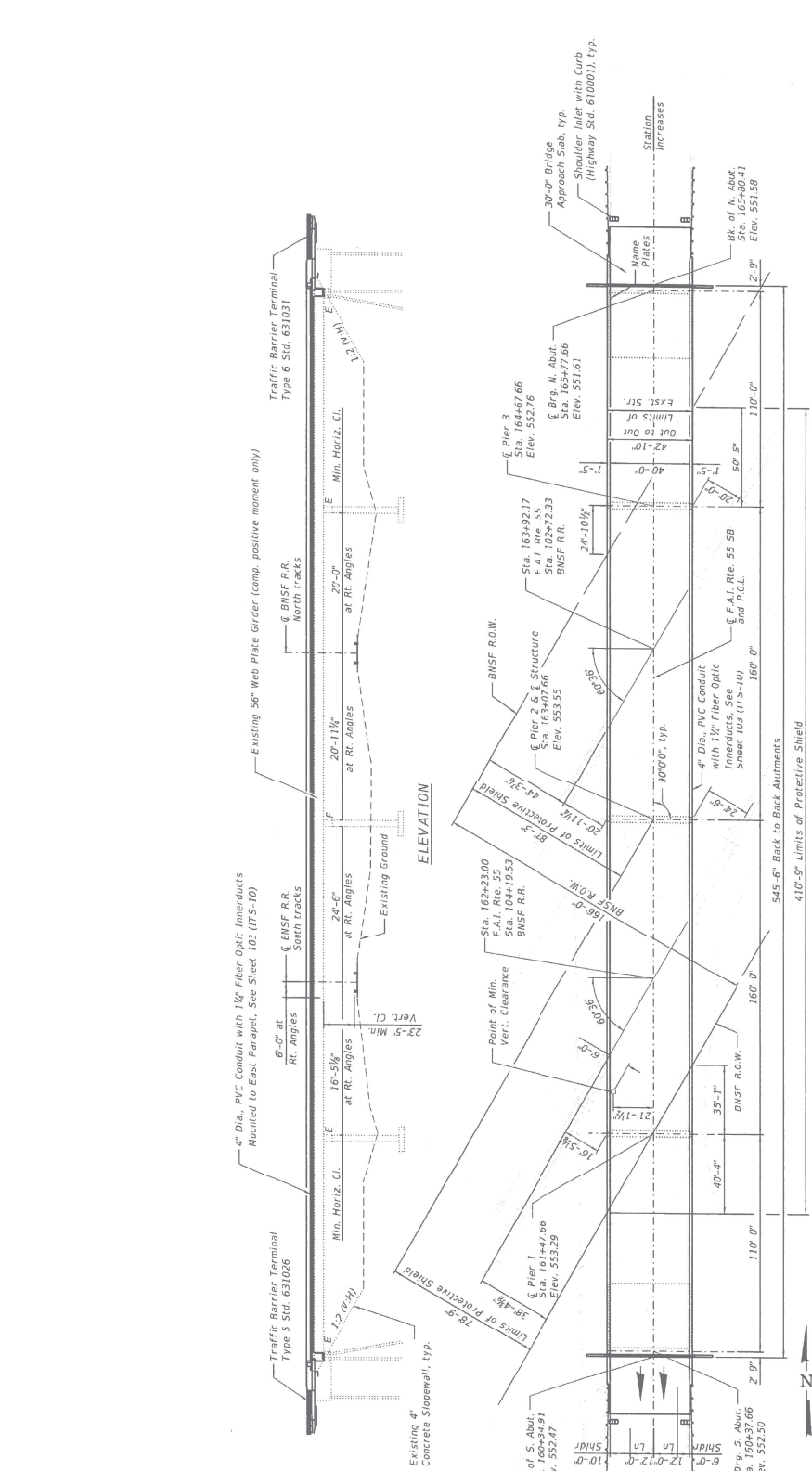
BOTTOM BEARING ASSEMBLY

SIDE RETAINER  
 Equivalent rolled angle with stiffeners will be allowed in lieu of welded plates.

STATE OF ILLINOIS  
 DEPARTMENT OF TRANSPORTATION

LOCATION 4: BRIDGE FRAMING PLAN  
 I-55 NB AT GRANT CREEK AND RR (SK-039-0286)

SHEET NO. 1 OF SHEETS 5 STA. TO STA.  
 SCALE:

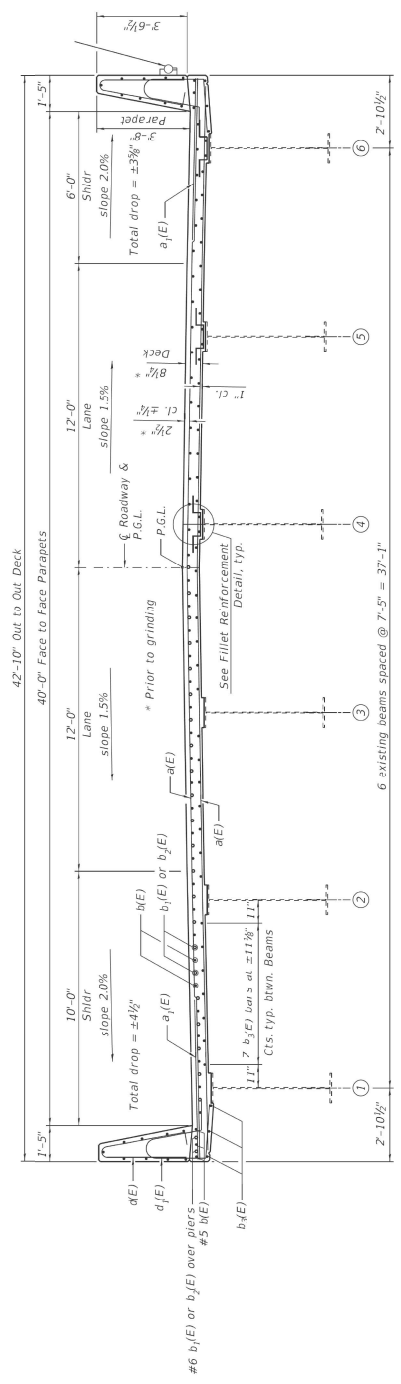


**STATE OF ILLINOIS**  
**DEPARTMENT OF TRANSPORTATION**

LOCATION 5: BRIDGE PLANS AND ELEVATION  
 I-55 AT BNSF RR (SW-099-0300)

SCALE: SHEET \_\_\_\_\_ OF \_\_\_\_\_ SHEETS STA. \_\_\_\_\_ TO STA. \_\_\_\_\_

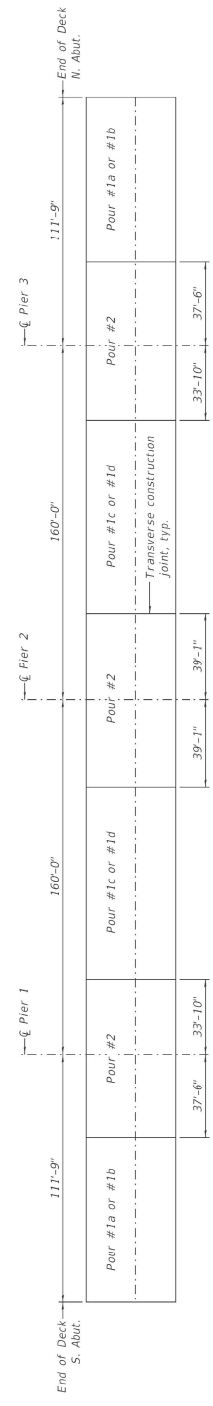
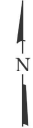
USER TIME	DESIGNED	REVISION	SHEET	COUNTY	SECTION	PROJECT
PROJECT #	DATE	NO.	NO.	NO.	NO.	NO.
DESIGNER	DESIGNED	NO.	NO.	COUNTY	SECTION	PROJECT
DRAWN	REVISION	NO.	NO.	VARIOUS	2021-23-8P	
CHECKED	REVISION	NO.	NO.	VARIOUS		
DATE	REVISION	NO.	NO.			CONTRACT NO. 627P56



CROSS SECTION  
(Looking North)

NEAR MIDSPIAN

NEAR PIER

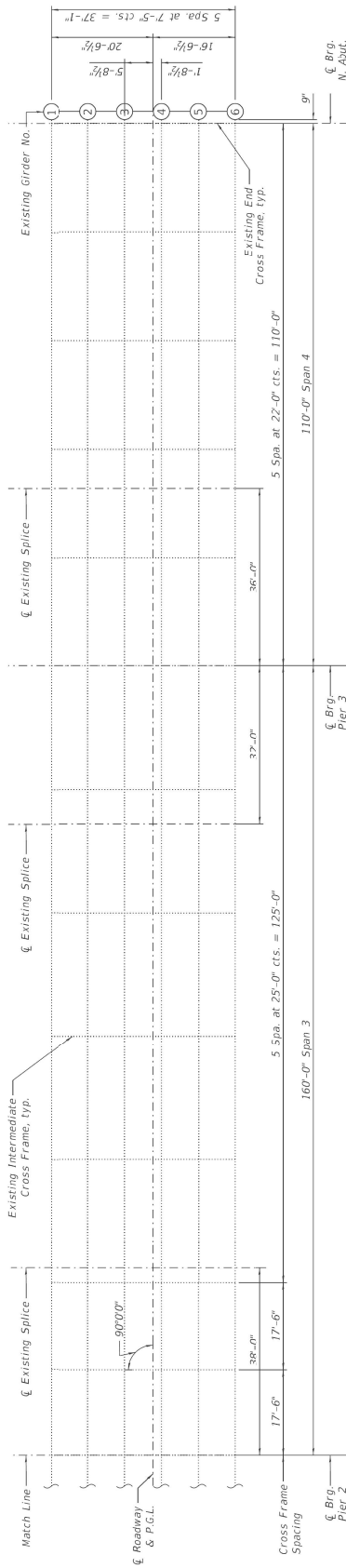


DECK POURING SEQUENCE

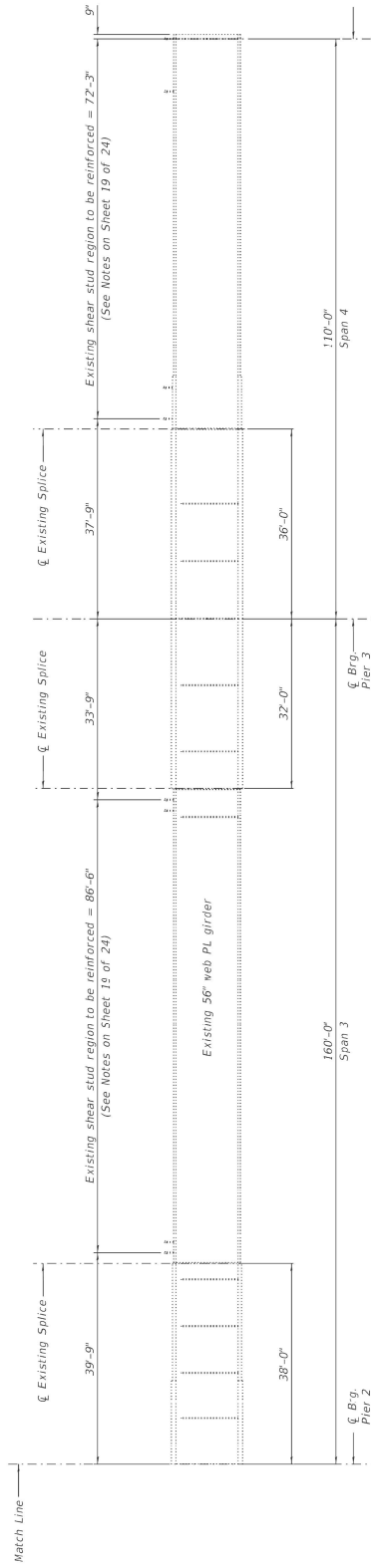
FOR INFORMATION ONLY

USER TIME = 10/23/2021	DESIGNED =	REVISED =	STATE OF ILLINOIS DEPARTMENT OF TRANSPORTATION	LOCATION: 5: BRIDGE CROSS SECTION AND DETAILS I-55 AT BNSF RR (SIN-009-0304)	SECTION 2021-138-8P	COUNTY WARREN	NO. OF SHEETS 34	PROJECT NO. 62756
PLOT SCALE = 1/8"=1'-0"	DRAWN =	REVISED =	SCALE:	TO STA.	WAR.	VAR.	CONTRACT NO.	ELUMS PROJECT
PLOT DATE = 10/23/2021	CHECKED =	REVISED =	OF SHEETS	STA.				





**FRAMING PLAN**



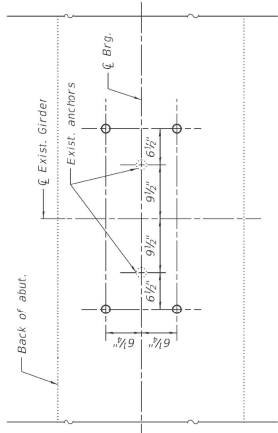
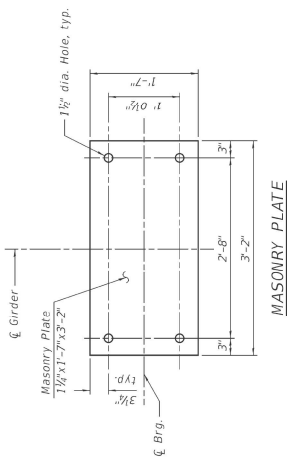
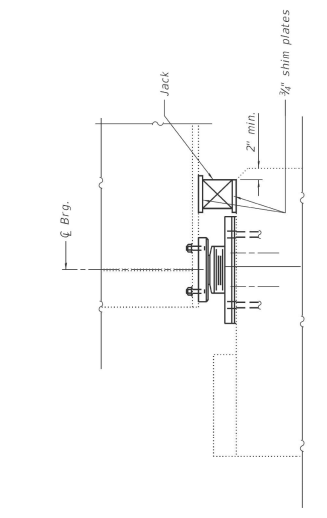
**GIRDER ELEVATION**

FOR INFORMATION ONLY

USER TIME	DESIGNED	REVISIONS	LOCATION	SECTION	COUNTY	SHEET
DATE	DRAWN	REVISED	STATE OF ILLINOIS	2021-138-BP	VARIOUS	24
PROJECT	CHECKED	REVISED	DEPARTMENT OF TRANSPORTATION	2021-138-BP	VARIOUS	27
SCALE	DATE	REVISED	ILLINOIS TPO-AD PROJECT	2021-138-BP	VARIOUS	27
			CONTRACT NO. 62P56			







**ANCHOR BOLT LOCATION**  
 (W. abut. shown S. abut. similar)  
 (For information only.)

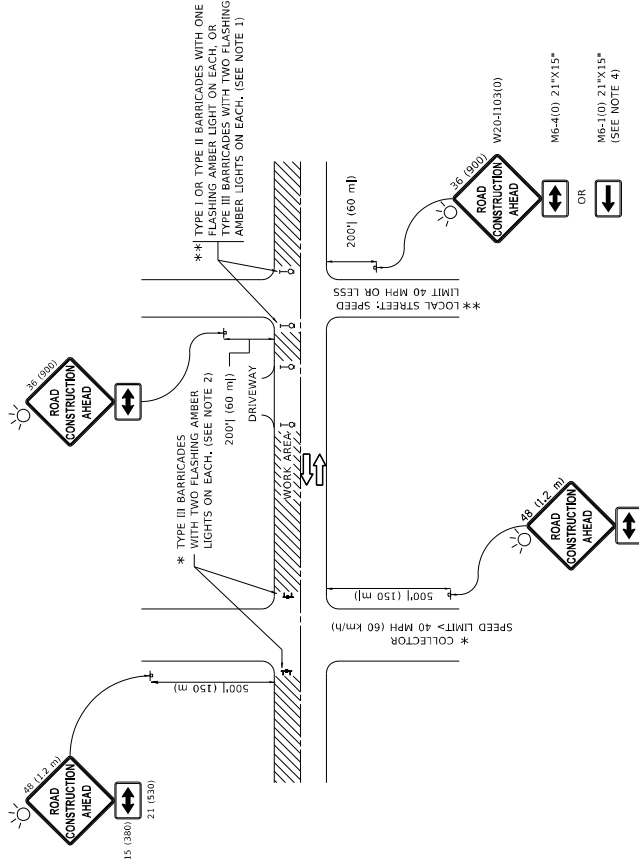
FOR INFORMATION ONLY

USER TIME DRAWN CHECKED DATE	DESIGNED DRAWN CHECKED DATE	REVISED REVISED REVISED REVISED	STATE OF ILLINOIS DEPARTMENT OF TRANSPORTATION	LOCATION 5: BRIDGE BEARING DETAILS I-55 AT BNSF RR (SN: 099-4304)	SCALE: SHEET OF SHEETS STA. TO STA.	WORK SHEET NO. 29 COUNTY VARIOUS SECTION 2001-138-BP CONTRACT NO. 672P56
---------------------------------------	--------------------------------------	--	---	--	-------------------------------------	---









**NOTES:**

- SIDE ROAD WITH A SPEED LIMIT OF 40 MPH (60 km/h) OR LESS AS SHOWN ON THE DRAWING AND AS DIRECTED BY THE ENGINEER:
  - ONE "ROAD CONSTRUCTION AHEAD" SIGN 36 x 36 (900x900) WITH A FLASHER MOUNTED ON IT APPROXIMATELY 200' (60 m) IN ADVANCE OF THE MAIN ROUTE.
  - THE CLOSED PORTION OF THE MAIN ROUTE SHALL BE PROTECTED BY BLOCKING WITH TYPE I, TYPE II OR TYPE III BARRICADES, 1/3 OF THE CROSS SECTION OF THE CLOSED PORTION.
- SIDE ROAD WITH A SPEED LIMIT GREATER THAN 40 MPH (60 km/h) AS SHOWN ON THE DRAWING AND AS DIRECTED BY THE ENGINEER:
  - ONE "ROAD CONSTRUCTION AHEAD" SIGN 48 x 48 (1.2 m x 1.2 m) WITH A FLASHER MOUNTED ON IT APPROXIMATELY 500' (150 m) IN ADVANCE OF THE MAIN ROUTE.
  - THE CLOSED PORTION OF THE MAIN ROUTE SHALL BE PROTECTED BY BLOCKING WITH TYPE III BARRICADES, 1/2 OF THE CROSS SECTION OF THE CLOSED PORTION.
- CONES MAY BE SUBSTITUTED FOR BARRICADES OR DRUMS AT HALF THE SPACING DURING DAY OPERATIONS. CONES SHALL BE A MINIMUM OF 28 (710) IN HEIGHT.
- SIGNING AND THE WORK ZONE, A SINGLE HEADED ARROW (M6-1) SHALL BE USED IN LIEU OF THE DOUBLE HEADED ARROW (M6-4).
- WHEN WORK IS BEING PERFORMED ON A SIDE ROAD OR DRIVEWAY, FOLLOW THE APPLICABLE STANDARD(S). THE DIRECTIONAL ARROW (M6-1 OR M6-4) SHALL BE COVERED OR REMOVED WHEN NO LONGER CONSISTENT WITH THE TRAFFIC CONTROL SET-UP.
- ADVANCE WARNING SIGNS ARE TO BE OMITTED ON DRIVEWAYS UNLESS OTHERWISE SPECIFIED IN THE PLANS OR BY THE ENGINEER.
- THE TRAFFIC CONTROL AND PROTECTION FOR SIDE ROADS, INTERSECTIONS, AND DRIVEWAYS SHALL BE INCLUDED IN THE COST OF SPECIFIED TRAFFIC CONTROL STANDARDS OR ITEMS.

All dimensions are in inches (millimeters) unless otherwise shown.

USER TIME	DESIGNED	REVISIONS	STATE OF ILLINOIS
DATE	DATE	DATE	SECTION
DATE	DATE	DATE	VAR.
DATE	DATE	DATE	CONTRACT NO.
DATE	DATE	DATE	PROJECT

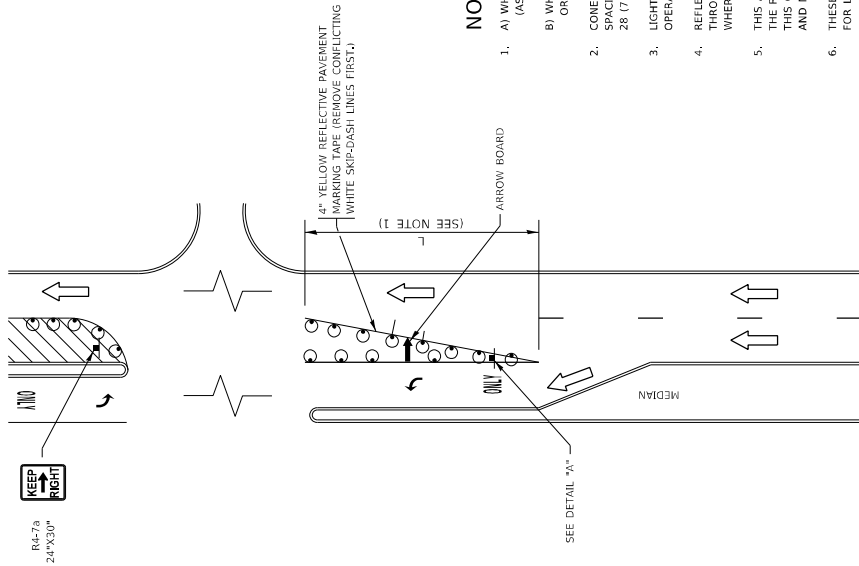
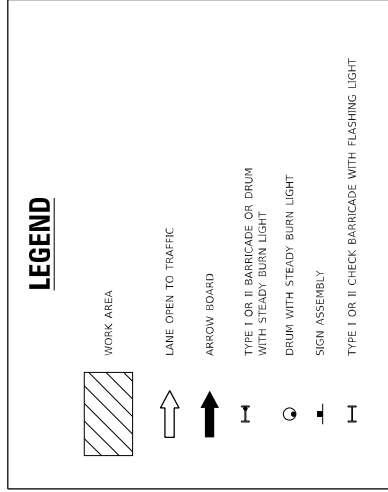
STATE OF ILLINOIS  
DEPARTMENT OF TRANSPORTATION

TRAFFIC CONTROL AND PROTECTION FOR  
SIDE ROADS, INTERSECTIONS, AND DRIVEWAYS

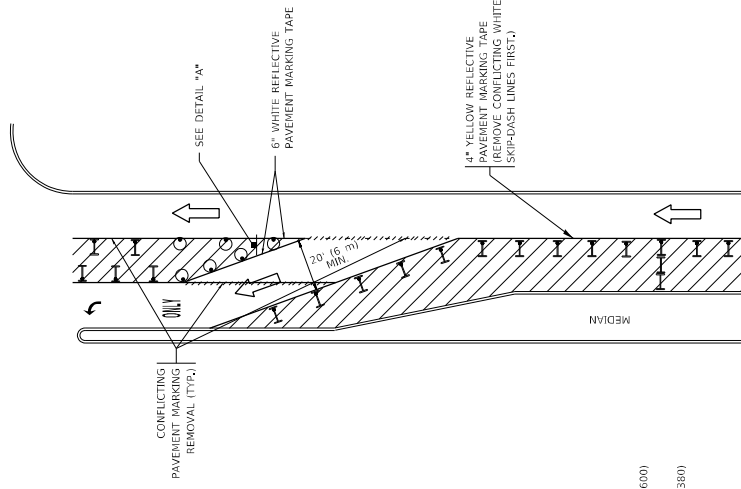
SCALE: NONE SHEET 1 OF 1 SHEETS STA. TO STA.

# TURN BAY ENTRANCE AT START OF LANE CLOSURE TAPER

# TURN BAY ENTRANCE WITHIN A LANE CLOSURE



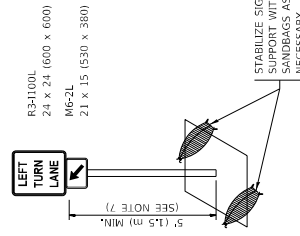
**FIGURE 1**



**FIGURE 2**

### NOTES:

1. A) WHEN "L" IS  $\leq$  THE STORAGE LENGTH OF THE TURN LANE (AS SHOWN IN FIG. 1), USE FIGURE 1.  
 B) WHEN "L" IS  $>$  THE STORAGE LENGTH OF THE TURN LANE OR THE TURN LANE IS WITHIN THE LANE CLOSURE, USE FIGURE 2.
2. CONES MAY BE SUBSTITUTED FOR BARRICADES OR DRUMS AT HALF THE SPACING DURING DAY OPERATIONS. CONES SHALL BE A MINIMUM OF 28 (7'10") IN HEIGHT.
3. LIGHTS WILL NOT BE REQUIRED ON BARRICADES OR DRUMS FOR DAY OPERATIONS. ALL LIGHTS SHALL BE MONODIRECTIONAL.
4. REFLECTIVE TEMPORARY PAVEMENT MARKINGS SHALL BE PLACED THROUGHOUT THE BARRICADED AREAS OF EACH TURN BAY AS SHOWN WHERE THE CLOSURE TIME IS GREATER THAN FOURTEEN (14) DAYS.
5. THIS APPLICATION ALSO APPLIES WHEN WORK IS BEING PERFORMED IN THE RIGHT LANES) AND THE RIGHT TURN BAY IS TO REMAIN OPEN. UNDER THIS CONDITION, "RIGHT TURN LANE" R3-1100R 24 x 24 (600 x 600) AND M6-2R 21 x 15 (530 x 380) SHALL BE USED.
6. THESE CONTROLS SHALL SUPPLEMENT MAINLINE TRAFFIC CONTROL FOR LANE CLOSURES.
7. THE SIGNS SHALL BE MOUNTED ABOVE THE BARRICADES/DRUMS ON SEPARATE SIGN SUPPORTS THAT MEET NCHRP 350 OR MASH REQUIREMENTS.
8. TRAFFIC CONTROL AND PROTECTION AT TURN BAYS (TO REMAIN OPEN TO TRAFFIC) SHALL BE INCLUDED IN THE COST OF SPECIFIED TRAFFIC CONTROL STANDARDS OR ITEMS.

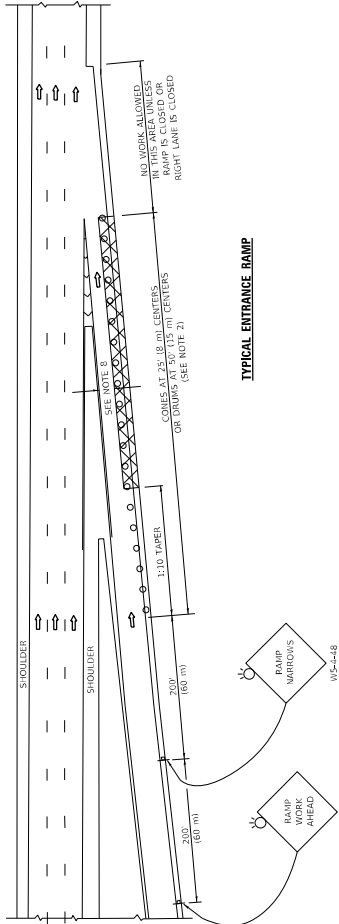


**DETAIL A**

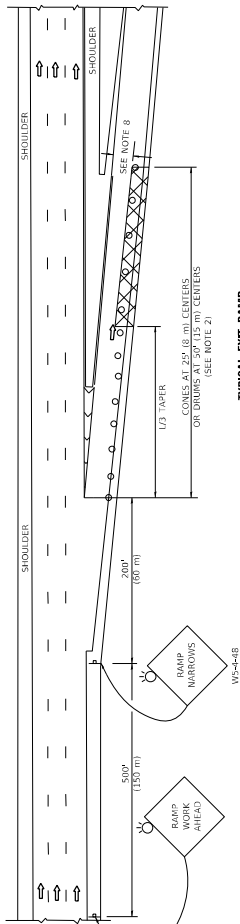
All dimensions are in inches (millimeters) unless otherwise shown.

USER TIME	DESIGNED	REVISIONS	STATE OF ILLINOIS	SECTION	COUNTY	NO. OF SHEETS	SHEET NO.
DATE	DATE	DATE	DEPARTMENT OF TRANSPORTATION	2021-H3R4P	VARIOUS	34	33
PROJECT NO.	PROJECT NO.	PROJECT NO.	TRAFFIC CONTROL AND PROTECTION AT TURN BAYS (TO REMAIN OPEN TO TRAFFIC)	TC-14	CONTRACT NO.	67256	
SCALE: NONE	SHEET 1	OF 1	SHEETS	STA.	TO STA.		

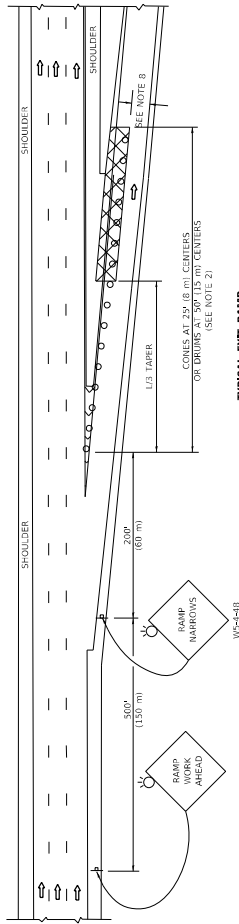
**PARTIAL RAMP CLOSURE DETAILS**



**TYPICAL ENTRANCE RAMP**



**TYPICAL EXIT RAMP**



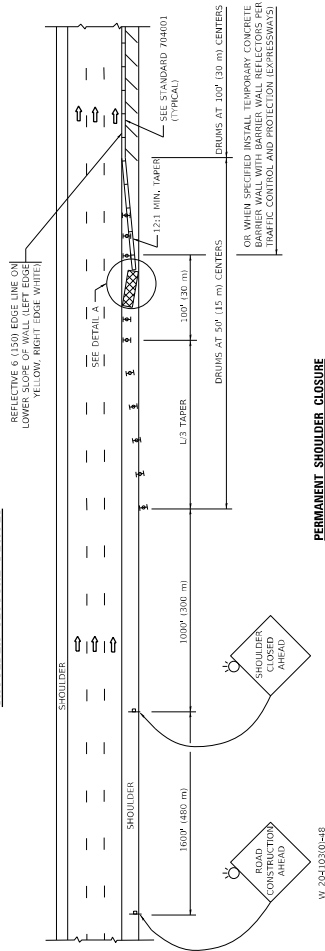
**SYMBOLS**

- ACTIVE WORK AREA
- SIGN ON PORTABLE OR PERMANENT SUPPORT
- FLAGGER WITH CONTROL SIGN
- TYPE II BARRICADE OR DRUM
- CONE, DRUM OR BARRICADE
- IMPACT ATTENUATOR OF TYPE AND TEST LEVEL SPECIFIED

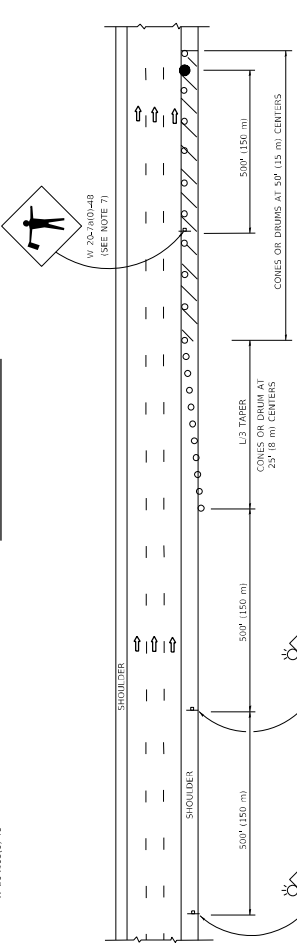
**GENERAL NOTES:**

1. THE "X" DISTANCE EQUALS:
  - 45 mph (80 km/h) OR GREATER - METRIC ENGLISH
  - OR GREATER - L-LOGS(W/S)
  - W = WIDTH OF OFFSET IN FEET (METERS)
2. TYPE II BARRICADES OR DRUMS ARE REQUIRED FOR ALL NIGHTTIME CLOSURES. TYPE II BARRICADES OR DRUMS WITH MONODIRECTIONAL STEADY BURN LIGHTS ARE REQUIRED FOR DELINEATING OBSTACLES, ENCROACHMENTS, OR BARRIERS EXCEEDING 100 FT (30 m) IN LENGTH AT NIGHT.
3. ALL SIGNS SHALL BE POST MOUNTED IF THE CLOSURE TIME EXCEEDS FOUR DAYS.
4. FLASHING LIGHTS SHALL BE USED DURING THE HOURS OF DARKNESS AND SHALL BE INSTALLED ABOVE THE FIRST TWO SETS OF SIGNS.

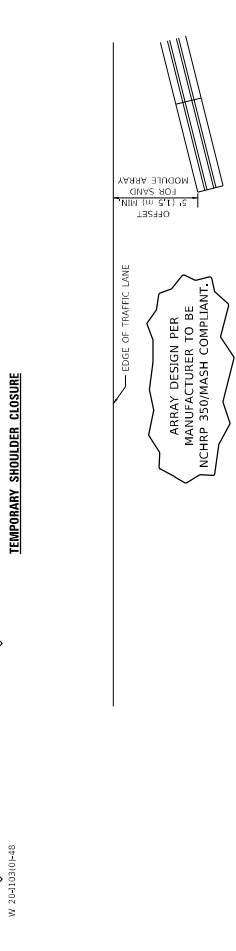
**SHOULDER CLOSURE DETAILS**



**PERMANENT SHOULDER CLOSURE**



**TEMPORARY SHOULDER CLOSURE**



THIS DETAIL IS USED WHERE:  
 1. VEHICLES, EQUIPMENT, WORKERS OR THEIR ACTIVITIES ENCR OACH IN AN AREA CLOSER THAN 15' (4.5 m) TO THE EDGE OF PAVEMENT FOR A PERIOD IN EXCESS OF 15 MINUTES.

ARRAY DESIGN PER MANUFACTURER TO BE NCHRP 350/MASH COMPLIANT.

**DETAIL "A" IMPACT ATTENUATOR, TEMPORARY (SEE NOTE 5)**

5. THE IMPACT ATTENUATOR TEMPORARY IS NOT REQUIRED WHEN THE TEMPORARY CONCRETE BARRIER WALL IS PROTECTED BY OR IS TIED INTO THE EXISTING GUARDRAIL. IF USED, THE ATTENUATOR SHALL BE A TYPE II DEVICE TO MEET NCHRP 350/MASH.
6. APPROXIMATELY FROM THE DISTRICTS BUREAU OF TRAFFIC IS REQUIRED FOR ALL FREEWAY CLOSURES.
  - a. FOUR OR MORE WORK VEHICLES ENTER THE TRAFFIC LANE IN A ONE HOUR PERIOD.
  - b. INTO THE LANE OPEN TO TRAFFIC.
7. THE FLAGGER AND FLAGGER SIGN ARE REQUIRED AT THE ABOVE LOCATIONS.
  - a. FOUR OR MORE WORK VEHICLES ENTER THE TRAFFIC LANE IN A ONE HOUR PERIOD.
  - b. INTO THE LANE OPEN TO TRAFFIC.
8. 12" MIN. WIDTH TANGENT SECTION, 16" MIN. WIDTH CURVE SECTION.
9. TEMPORARY SHOULDER AND MONODIRECTIONAL INTERCHANGE RAMP CLOSURES ARE ALLOWED VEHICLES BETWEEN 9:00 A.M. AND 3:00 P.M. AND BETWEEN 7:00 P.M. AND 5:00 A.M. OR AS APPROVED BY THE EXPRESSWAY OPERATIONS ENGINEER. RAMP CLOSURES BETWEEN 5:00 P.M. AND 7:00 P.M. OR AS APPROVED BY THE EXPRESSWAY OPERATIONS ENGINEER.

ALL DIMENSIONS ARE IN INCHES (MILLIMETERS) UNLESS OTHERWISE SHOWN.

USER TIME	DESIGNED	STATE OF ILLINOIS	TRAFFIC CONTROL DETAILS FOR FREEWAY	SECTION	COUNTY	SHEET
DRAWN	D.W.S.	DEPARTMENT OF TRANSPORTATION	SHOULDER CLOSURES AND PARTIAL RAMP CLOSURES	VARIOUS	34	34
CHECKED	DATE	SCALE: NONE	SCALE: NONE	1C-47	2021-13R-8P	CONTRACT NO. 672P56
DATE	11-26	SHEET 1 OF 1	SHEETS 57A, 57B, 57C, 57D, 57E, 57F, 57G, 57H, 57I, 57J, 57K, 57L, 57M, 57N, 57O, 57P, 57Q, 57R, 57S, 57T, 57U, 57V, 57W, 57X, 57Y, 57Z	ILLINOIS	TRD-201 PROJECT	