

INDEX OF SHEETS

CIVIL PLANS

- 01 COVER
 - 02 DETAILS & SUMMARY OF QUANTITIES
 - 03 SCHEDULES
 - 04-07 EXISTING TOPOGRAPHY & PROPOSED IMPROVEMENTS
 - 08-09 CROSS SECTIONS
 - 10 ADA CURB RAMP GRADING DETAILS
 - 11 S.W.P.P.P.
- ## SIGNAL PLANS
- 12 NOTES
 - 13-21 SIGNAL PLANS AND QUANTITIES

HIGHWAY STANDARDS

- 000001-08 STANDARD SYMBOLS, ABBREVIATIONS, & PATTERNS
- 424001-11 PERPENDICULAR CURB RAMPS
- 542301-03 PRECAST REINFORCED CONCRETE FLARED END SECTION
- 602301-04 INLET, TYPE A
- 602306-03 INLET, TYPE B
- 602401-07 PRECAST MANHOLE, TYPE A, 4' DIAMETER
- 602402-03 PRECAST MANHOLE, TYPE A, 5' DIAMETER
- 604001-05 FRAME AND LIDS TYPE 1
- 606001-08 CONCRETE CURB TYPE B AND COMBINATION CONCRETE CURB AND GUTTER
- 701006-05 OFF ROAD OPERATIONS, 2L, 2W, 15' TO 24" FROM PAVEMENT EDGE
- 701101-05 OFF ROAD OPERATIONS, MULTILANE, 15' TO 24" FROM PAVEMENT EDGE
- 701426-09 LANE CLOSURE, MULTILANE, INTERMITTENT OR MOVING OPERATIONS, FOR SPEEDS ≥ 45 MPH
- 701602-10 URBAN LANE CLOSURE, MULTILANE, 2W WITH BIDIRECTIONAL LEFT TURN LANE
- 701701-10 URBAN LANE CLOSURE - MULTILANE INTERSECTION
- 701901-08 TRAFFIC CONTROL DEVICES

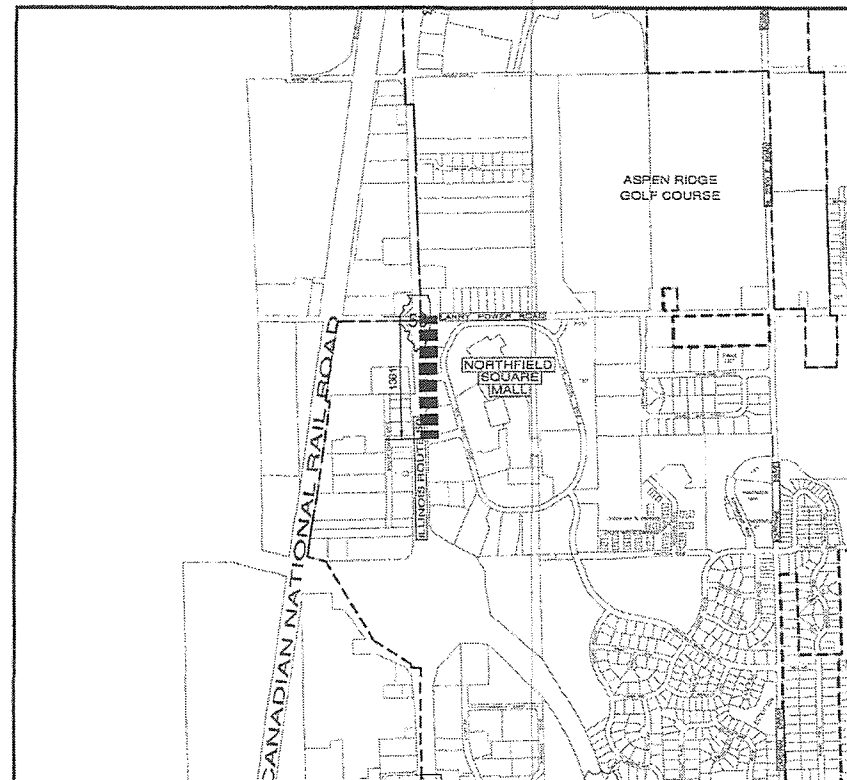
STATE OF ILLINOIS DEPARTMENT OF TRANSPORTATION DIVISION OF HIGHWAYS

PLANS FOR PROPOSED
ILLINOIS TRANSPORTATION ENHANCEMENT PROGRAM
ILLINOIS ROUTE 50 SHARED PATH
MALL ENTRANCE TO LARRY POWER ROAD
KANKAKEE COUNTY
VILLAGE OF BRADLEY
SECTION NO.: 17-00098-00-BT
PROJECT NO.: DS9Y(049)
JOB NO.: C-93-019-21

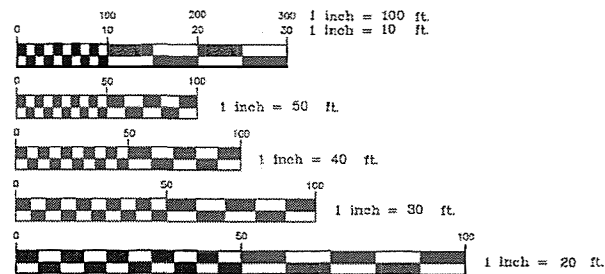
ROUTES	SECTION	COUNTY	TOTAL SHEETS	SHEET NO.
IL ROUTE 50 - F.A.P. 840 LARRY POWER ROAD	17-00098-00-BT	KANKAKEE	21	1



LOCATION OF SECTION INDICATED THUS: ---



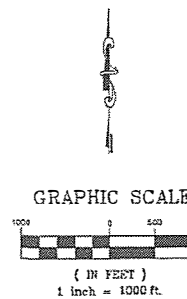
STATE OF ILLINOIS DEPARTMENT OF TRANSPORTATION DIVISION OF HIGHWAYS		
APPROVED	11-18-2021	(DATE)
	<i>Michael Waters</i>	(SIGNATURE)
	VILLAGE PRESIDENT, VILLAGE OF BRADLEY	
PASSED	11/19/2021	(DATE)
	<i>[Signature]</i>	(SIGNATURE)
	DISTRICT #3 ENGINEER OF LOCAL ROADS & STREETS	
RELEASING FOR BID BASED ON LIMITED REVIEW	11/19/2021	(DATE)
	<i>[Signature]</i>	(SIGNATURE)
	DEPUTY DIRECTOR OF HIGHWAYS, REGION #2 ENGINEER	



FULL SIZE PLANS HAVE BEEN PREPARED USING STANDARD ENGINEERING SCALES. REDUCED SIZED PLANS WILL NOT CONFORM TO STANDARD SCALES. IN MAKING MEASUREMENTS ON REDUCED PLANS, THE ABOVE SCALES MAY BE USED.

CONTRACT NO.: 87669

J.U.L.I.E.
JOINT UTILITY LOCATION
INFORMATION FOR EXCAVATION
1-800-892-0123



PRINTED BY THE AUTHORITY
OF THE STATE OF ILLINOIS

REVISIONS		
DATE	BY	DESCRIPTION

TOWNSHIP 31 NORTH, RANGE 12 EAST
TOTAL PROJECT LENGTH: 1361 FEET (0.258 MILES)
NET PROJECT LENGTH: 1361 FEET (0.258 MILES)

ROADWAY	FUNCTIONAL CLASSIFICATION	CURRENT ADT (2021)	DESIGN SPEED
ILLINOIS ROUTE 50	URBAN MINOR ARTERIAL	17,000	45 MPH
LARRY POWER ROAD	URBAN MINOR ARTERIAL/MAJOR COLLECTOR	4,600	30 MPH

SIGNED: *Joel Greer*
JOEL W. GREER
P.E. # 062-052541
11/30/2021
EXPIRATION DATE OF LICENSE
11/17/2021
DATE

SIGNED: *[Signature]*
Daniel P. Babin
2-28-2022
DATE: 11-17-21
SHEETS: 11-110

MGA² CIVIL ENGINEERING SURVEYING

M GINGERICH GEREAX & ASSOCIATES
Professional Design Firm License # 184.001808
P. 815-939-4921 www.mga2.com F. 815-939-9810
240 N. INDUSTRIAL DRIVE | BRADLEY, IL 60916

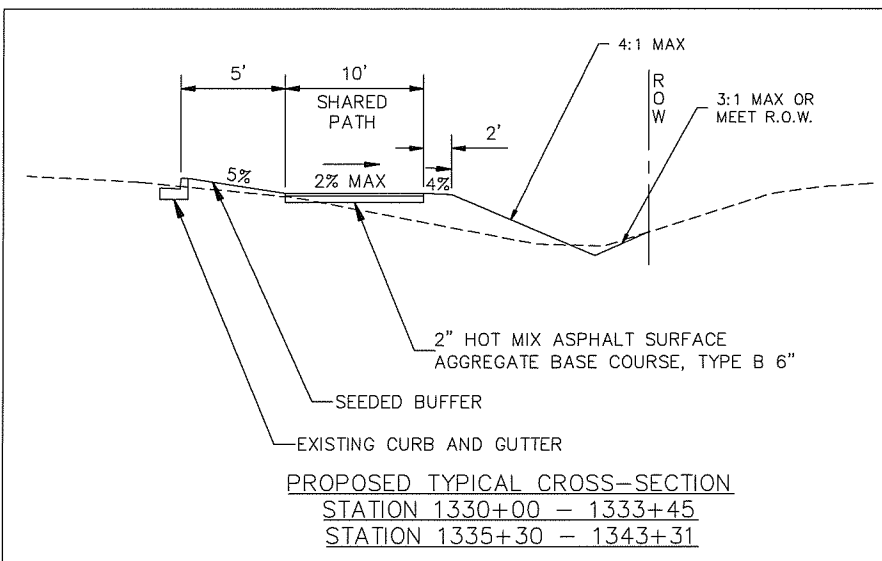
ILLINOIS DEPARTMENT OF TRANSPORTATION
ITEP - ILLINOIS ROUTE 50 SHARED PATH
MALL ENTRANCE TO LARRY POWER ROAD

COVER

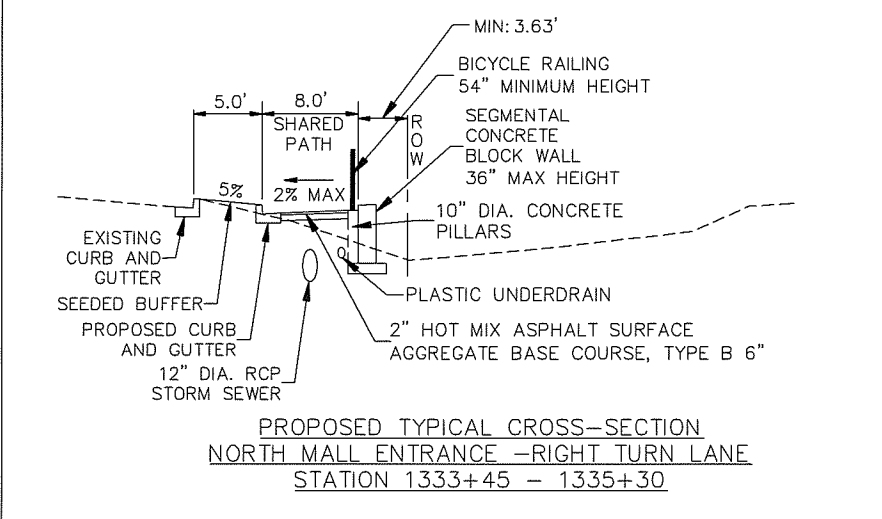
SCALE: DATE: 11/16/21 DRAWN BY: MGC CHECKED BY: JWG

CONSTRUCTION TYPE CODE: 0028			
SUMMARY OF QUANTITIES			
ITEM NUMBER	ITEMS	UNIT	QUANTITY
20200100	EARTH EXCAVATION	CU YD	601
20800150	TRENCH BACKFILL	CU YD	104
21101505	TOPSOIL EXCAVATION AND PLACEMENT	CU YD	380
21101615	TOPSOIL FURNISH AND PLACE, 4"	SQ YD	4356
25000210	SEEDING, CLASS 2A	ACRE	0.9
25000400	NITROGEN FERTILIZER NUTRIENT	POUND	81
25000500	PHOSPHORUS FERTILIZER NUTRIENT	POUND	81
25000600	POTASSIUM FERTILIZER NUTRIENT	POUND	81
28000500	INLET AND PIPE PROTECTION	EACH	10
28000510	INLET FILTERS	EACH	4
28001100	TEMPORARY EROSION CONTROL BLANKET	SQ YD	4356
35101800	AGGREGATE BASE COURSE, TYPE B 6"	SQ YD	1241
40800050	INCIDENTAL HOT MIX ASPHALT SURFACING	TON	122
42400200	PORTLAND CEMENT CONCRETE SIDEWALK 5"	SQ FT	1031
42400800	DETECTABLE WARNINGS	SQ FT	160
44000500	COMBINATION CURB AND GUTTER REMOVAL	FOOT	60
44000600	SIDEWALK REMOVAL	SQ FT	53
44003100	MEDIAN REMOVAL	SQ FT	237
44200176	PAVEMENT PATCHING, TYPE I, 15"	SQ YD	14
50800105	REINFORCEMENT BARS	POUND	100
50901760	PIPE HANDRAIL	FOOT	270
52200800	SEGMENTAL CONCRETE BLOCK WALL	SQ FT	811
54213657	PRECAST REINFORCED CONCRETE FLARED END SECTIONS 12"	EACH	1
54216180	REINFORCED CONCRETE PIPE TEE, 12" PIPE WITH 12" RISER	EACH	1
54248510	CONCRETE COLLAR	CU YD	1
550A0050	STORM SEWERS, CLASS A, TYPE 1 12"	FOOT	365
550A0090	STORM SEWERS, CLASS A, TYPE 1 18"	FOOT	510
550A0120	STORM SEWERS, CLASS A, TYPE 1 24"	FOOT	49
55100500	STORM SEWER REMOVAL 12"	FOOT	5
55100900	STORM SEWER REMOVAL 18"	FOOT	25
60218300	MANHOLES, TYPE A, 4'-DIAMETER, TYPE 1 FRAME, OPEN LID	EACH	4
60218400	MANHOLES, TYPE A, 4'-DIAMETER, TYPE 1 FRAME, CLOSED LID	EACH	2
60221100	MANHOLES, TYPE A, 5' DIAMETER, TYPE 1 FRAME, CLOSED LID	EACH	1
60236800	INLETS, TYPE A, TYPE 11 FRAME AND GRATE	EACH	1
60240215	INLETS, TYPE B, TYPE 1 FRAME, CLOSED LID	EACH	1
60240310	INLETS, TYPE B, TYPE 11 FRAME AND GRATE	EACH	2
60603800	COMBINATION CONCRETE CURB AND GUTTER, TYPE B-6.12	FOOT	254
60605000	COMBINATION CONCRETE CURB AND GUTTER, TYPE B-6.24	FOOT	78
66900200	NON-SPECIAL WASTE DISPOSAL	CU YDS	31
66900530	SOIL DISPOSAL ANALYSIS	EACH	3
66901001	REGULATED SUBSTANCES PRE-CONSTRUCTION PLAN	L SUM	1
66901003	REGULATED SUBSTANCES FINAL CONSTRUCTION REPORT	L SUM	1
66901006	REGULATED SUBSTANCES MONITORING	DAYS	4
67100100	MOBILIZATION	L SUM	1
70100350	TRAFFIC CONTROL AND PROTECTION, STANDARD 701101	EACH	1
70102632	TRAFFIC CONTROL AND PROTECTION, STANDARD 701602	L SUM	1
70102635	TRAFFIC CONTROL AND PROTECTION, STANDARD 701701	L SUM	1
72400710	RELOCATE SIGN PANEL - TYPE 1	SQ FT	4
78004230	PREFORMED PLASTIC PAVEMENT MARKING, TYPE B - INLAID - 6"	FOOT	581
78004250	PREFORMED PLASTIC PAVEMENT MARKING, TYPE B - INLAID - 12"	FOOT	204
78004280	PREFORMED PLASTIC PAVEMENT MARKING, TYPE B - INLAID - 24"	FOOT	98
78300201	PAVEMENT MARKING REMOVAL - GRINDING	SQ FT	200
81028210	UNDERGROUND CONDUIT, GALVANIZED STEEL, 2 1/2" DIA.	FOOT	31
81028360	UNDERGROUND CONDUIT, PVC, 2 1/2" DIA.	FOOT	81
85000200	MAINTENANCE OF EXISTING TRAFFIC SIGNAL INSTALLATION	EACH	3
87301215	ELECTRIC CABLE IN CONDUIT, SIGNAL NO. 14 2C	FOOT	756
87301225	ELECTRIC CABLE IN CONDUIT, SIGNAL NO. 14 3C	FOOT	756
87301245	ELECTRIC CABLE IN CONDUIT, SIGNAL NO. 14 5C	FOOT	250
87301900	ELECTRIC CABLE IN CONDUIT, EQUIPMENT GROUNDING CONDUCTOR, NO. 6 1C	FOOT	102
87502480	TRAFFIC SIGNAL POST, GALVANIZED STEEL 14 FT.	EACH	5
87502500	TRAFFIC SIGNAL POST, GALVANIZED STEEL 16 FT.	EACH	1
87800100	CONCRETE FOUNDATION, TYPE A	FOOT	20
87900200	DRILL EXISTING HANDHOLE	EACH	5
88102717	PEDESTRIAN SIGNAL HEAD, LED, 17FACE, BRACKET MOUNTED WITH COUNTDOWN TIMER	EACH	8
89502375	REMOVE EXISTING TRAFFIC SIGNAL EQUIPMENT	EACH	3
89502376	REBUILD EXISTING HANDHOLE	EACH	1
X8760200	ACCESSIBLE PEDESTRIAN SIGNALS	EACH	8
X8950114	MODIFY EXISTING CONTROLLER AND CABINET	EACH	3
Z0013798	CONSTRUCTION LAYOUT	L SUM	1
Z0030850	TEMPORARY INFORMATION SIGNING	SQ FT	42
Z0033044	RE-OPTIMIZE TRAFFIC SIGNAL SYSTEM LEVEL 1	EACH	3

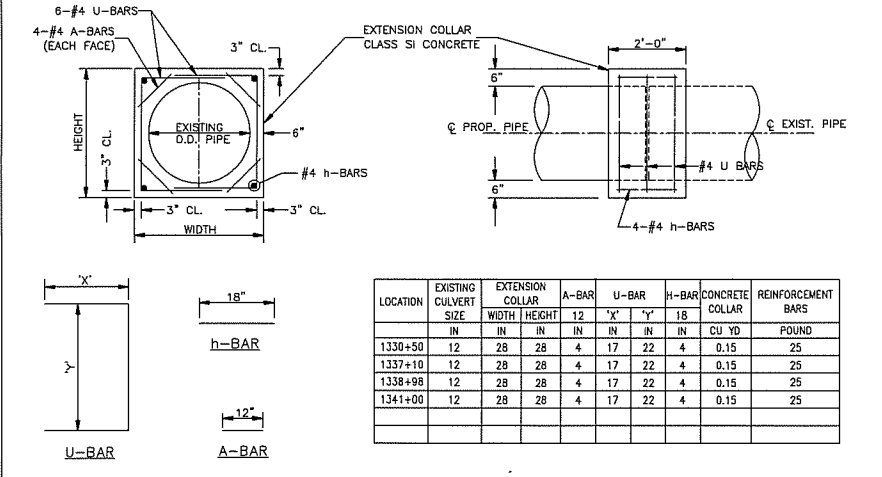
SPECIALTY ITEMS



PROPOSED TYPICAL CROSS-SECTION
STATION 1330+00 - 1333+45
STATION 1335+30 - 1343+31

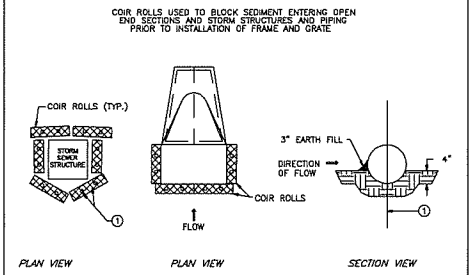
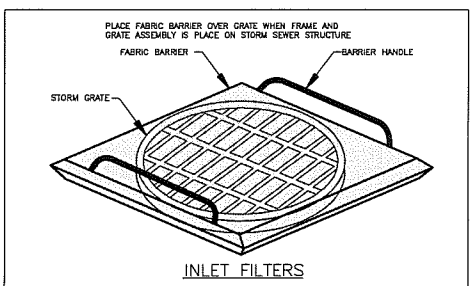


PROPOSED TYPICAL CROSS-SECTION
NORTH MALL ENTRANCE - RIGHT TURN LANE
STATION 1333+45 - 1335+30

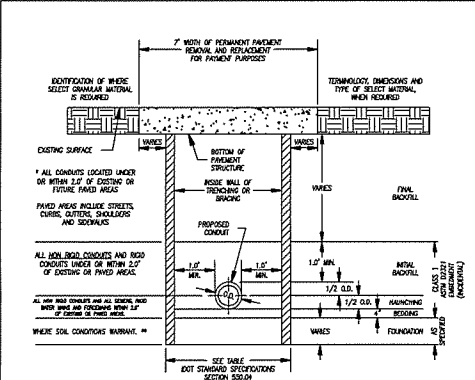


CULVERT COLLAR CONNECTION DETAIL 542-3

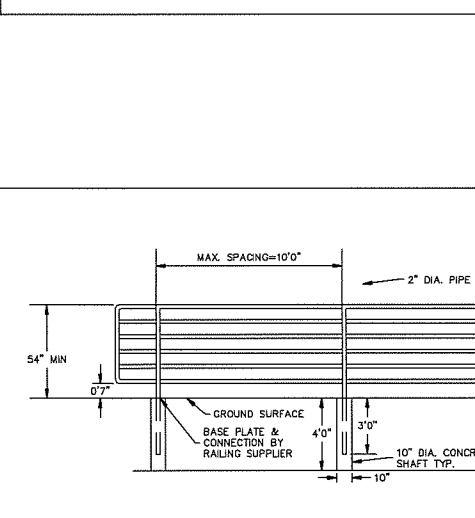
- GENERAL NOTES**
- ALL PROPOSED ELEVATIONS SHOWN ON THE PLANS ARE FINISHED SURFACE ELEVATIONS UNLESS OTHERWISE SPECIFIED.
 - PRIOR TO COMMENCING ANY FILL OPERATIONS IN PAVEMENT OR SHOULDER AREAS, ALL TOPSOIL IS TO BE REMOVED.
 - ALL FILLS SHALL BE COMPACTED LIFTS WITH A MAXIMUM THICKNESS OF 6 INCHES OR AS OTHERWISE SPECIFIED BY THE ENGINEER.
 - FINAL TOPSOIL THICKNESS IN LANDSCAPE AREAS SHALL BE A MINIMUM OF 4".
 - CONTRACTOR SHALL PROTECT ANY EXISTING LANDSCAPE ITEM, ANY DAMAGE SHALL BE REPLACED AT CONTRACTORS COST.
 - REMOVAL OF EXISTING END SECTIONS, HEADWALLS, STORM SEWER SECTIONS, OR SALVAGING EXISTING END SECTIONS SHALL BE INCLUDED IN THE COST FOR STORM SEWER.
 - CONTRACTORS SHALL PROTECT EXISTING PAVEMENT FROM DAMAGE. ANY DAMAGE SHALL BE REPLACED AT THE CONTRACTORS COST.
 - CONCRETE FLARED END SECTION REMOVAL SHALL BE INCLUDED IN COST OF PROPOSED STORM SEWER INSTALLATION.
 - CONCRETE COLLARS SHALL BE USED IN ALL EXTENSIONS OF EXISTING STORM SEWER.
 - ALL CURB INLETS ALONG PATHWAY SHALL HAVE ADA COMPLIANT GRATE ON TYPE 11 FRAME



INLET AND PIPE PROTECTION

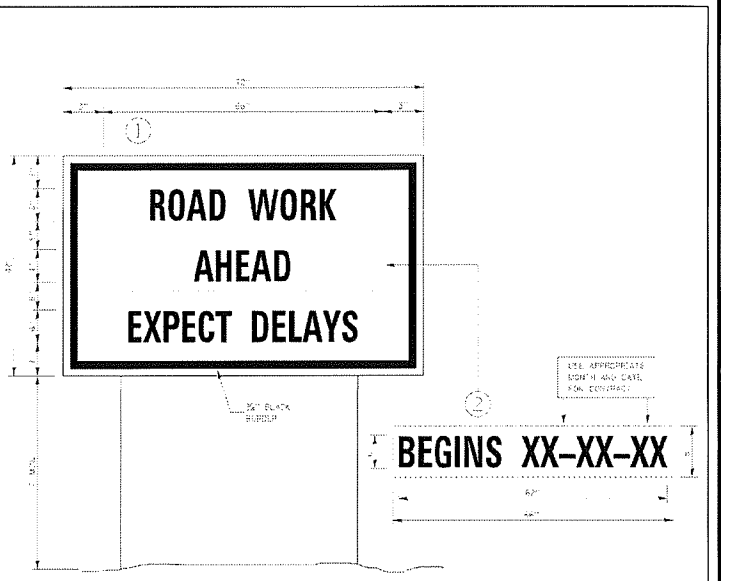


TYPICAL TRENCH BACKFILL DETAIL
STORM & SANITARY SEWERS
N.T.S.



BICYCLE RAILING (GROUND MOUNTED)

ROUTES	SECTION	COUNTY	TOTAL SHEETS	SHEET NO.
IL ROUTE 50 - F.A.P. 840 LARRY POWER ROAD	17-00098-00-BT	KANKAKEE	21	2

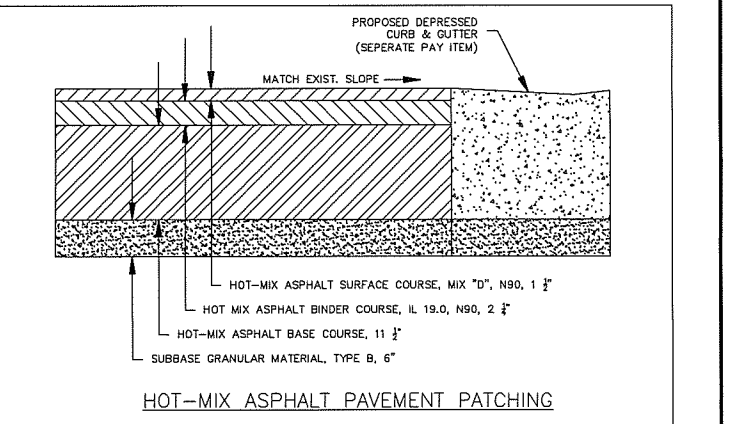


TEMPORARY INFORMATION SIGNING

NOTES

- USE 9" x 12" BLACK LETTERING ON FLUORESCENT ORANGE BACKGROUND.
- SEE SHEET 17-00098-00-BT FOR THE ROAD WORK AHEAD SIGNING DETAILS AS DIRECTED BY THE ENGINEER.
- USE 12" CURVED SIGN PANELS WITH A MINIMUM OF 12" WIDE REFLECTIVE SHEETING ON THE FRONT OF THE SIGN PANELS.
- USE 12" CURVED SIGN PANELS WITH A MINIMUM OF 12" WIDE REFLECTIVE SHEETING ON THE FRONT OF THE SIGN PANELS.
- SEE SPECIAL PROVISIONS TEMPORARY SIGNING FOR ADDITIONAL INFORMATION.
- IF THE SIGN PANEL IS TO BE USED IN A TEMPORARILY UNPAVED AREA, EACH SIGN SHALL BE 2' x 4' AND THE DATE PANEL SHALL BE MEASURED SEPARATELY FOR MATERIAL.

720-8



REVISIONS

DATE	BY	DESCRIPTION

MGA CIVIL ENGINEERING SURVEYING

M GINGERICH GEREAX & ASSOCIATES
Professional Design Firm License # 184.001808
P. 815-939-4921 www.mg2a.com F. 815-939-9810
240 N. INDUSTRIAL DRIVE | BRADLEY, IL. 60915

ILLINOIS DEPARTMENT OF TRANSPORTATION
ITEP - ILLINOIS ROUTE 50 SHARED PATH
MALL ENTRANCE TO LARRY POWER ROAD

DETAILS

SCALE: DATE: 12/9/21 DRAWN BY: MDC CHECKED BY: JWG

ROUTES	SECTION	COUNTY	TOTAL SHEETS	SHEET NO.
IL ROUTE 50 - F.A.P. 840 LARRY POWER ROAD	17-00098-00-BT	KANKAKEE	21	3
		CONTRACT NO.: 87669		

STATION	TO	STATION	INCIDENTAL HOT MIX ASPHALT SURFACING TON	PORTLAND CEMENT CONCRETE 5" SQ FT	AGGREGATE BASE COURSE, TYPE B 6" SQ YD	DETECTABLE WARNINGS SQ FT	CURB AND GUTTER REMOVAL FOOT	SIDEWALK REMOVAL SQ FT	PAVEMENT PATCHING, TYPE 1, 15" SQ YD	PRE-FORMED PLASTIC PAVEMENT MARKING, TYPE B - INLAID - 6" FOOT	PRE-FORMED PLASTIC PAVEMENT MARKING, TYPE B - INLAID - 12" FOOT	PRE-FORMED PLASTIC PAVEMENT MARKING, TYPE B - INLAID - 24" FOOT	COMBINATION CONCRETE CURB AND GUTTER, TYPE B-6.24 FOOT	COMBINATION CONCRETE CURB AND GUTTER, TYPE B-6.12 FOOT
1329+78		1330+11		468	52	40	10	53	2	212	204	52		
1330+11		1332+74	32		292									19
1332+74		1333+45	8		71									71
1333+45		1335+07	16		144									164
1335+07		1335+30		132	15	37	19		4			14		
1335+30		1336+55					18		10	256		20	78	
1336+55		1336+78		166	18	35	17		4					
1336+78		1342+35	67		619									
1342+35		1342+52		120	13	28	13		3					
1342+52		1343+07								113		12		
1343+07		1343+24		145	16	20	11		2					

FROM	INVERT	TO	INVERT	PERCENT SLOPE	12" RCP STORM SEWER	18" RCP STORM SEWER	24" RCP STORM SEWER
					LN FT	LN FT	LN FT
	685.97	1	685.88	2.0	5		
1A	685.88	1	683.78	3.7	42		
1B	686.50	1A	685.88	3.7	31		
2	686.12	3	685.67	0.4	112		
3	685.67	4	685.22	0.4	113		
4	685.22	5	685.13	0.4	22		
	685.70	5	685.33	10.7	3		
6	684.29	7	683.88	1.2		34	
	685.84	7	684.56	8.9	14		
7	683.88	8	682.00	1.0		188	
	683.86	8	682.88	10.0	10		
8	682.00	9	680.00	1.0		200	
	682.04	9	680.72	10.0	13		
9	680.00	10	679.12	1.0		88	
10	679.12		678.88	0.5			49

STATION	TO	STATION	CUT	FILL	NET EXCAVATION
			SQ FT	SQ FT	CU YD
1330+25		1330+50	2.43	4.41	2
1330+50		1331+00	6.59	18.15	21
1331+00		1331+50	5.26	6.73	3
1331+50		1332+00	5.32	9.02	7
1332+00		1332+50	4.07	10.56	12
1332+50		1332+74	10.91	8.33	-2
1332+74		1333+00	9.97	7.52	-2
1333+00		1333+50	9.25	8.20	-2
1333+50		1334+00	8.46	7.16	-2
1334+00		1334+50	7.94	8.88	2
1334+50		1335+00	7.54	10.10	5
1335+00		1335+12	10.63	14.32	2
1335+12		1336+78	0.00	0.00	0
1336+78		1337+00	0.00	0.00	0
1337+00		1337+50	0.90	24.66	44
1337+50		1338+00	2.32	20.08	33
1338+00		1338+50	4.38	18.85	27
1338+50		1339+00	4.71	20.94	30
1339+00		1339+50	2.68	20.84	34
1339+50		1340+00	2.96	27.53	46
1340+00		1340+50	3.69	24.49	39
1340+50		1341+00	5.73	23.75	33
1341+00		1341+50	2.34	19.88	32
1341+50		1342+00	5.91	14.92	17
1342+00		1342+39	0.00	25.09	33
1342+39		1342+57	8.30	0.00	-6
1342+57		1343+11	0.00	0.00	0
1343+11		1343+29	0.00	5.41	4

REVISIONS		
DATE	BY	DESCRIPTION

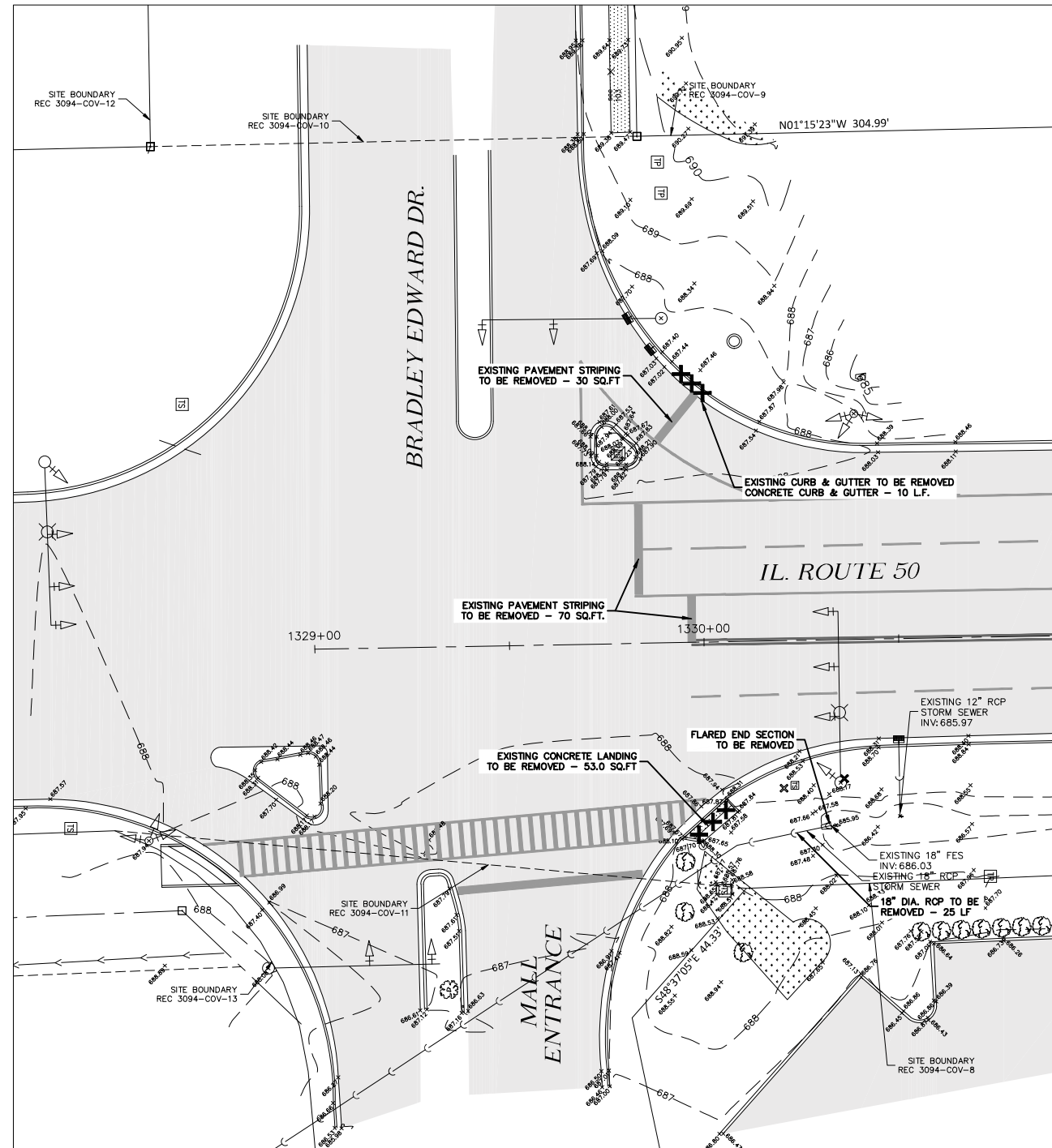
MGA² CIVIL ENGINEERING SURVEYING
M GINGERICH GEREAX & ASSOCIATES
Professional Design Firm License # 184.001808
P. 815-939-4921 www.mg2a.com F. 815-939-9810
240 N. INDUSTRIAL DRIVE | BRADLEY, IL. 60915

ILLINOIS DEPARTMENT OF TRANSPORTATION
ITEP - ILLINOIS ROUTE 50 SHARED PATH
MALL ENTRANCE TO LARRY POWER ROAD

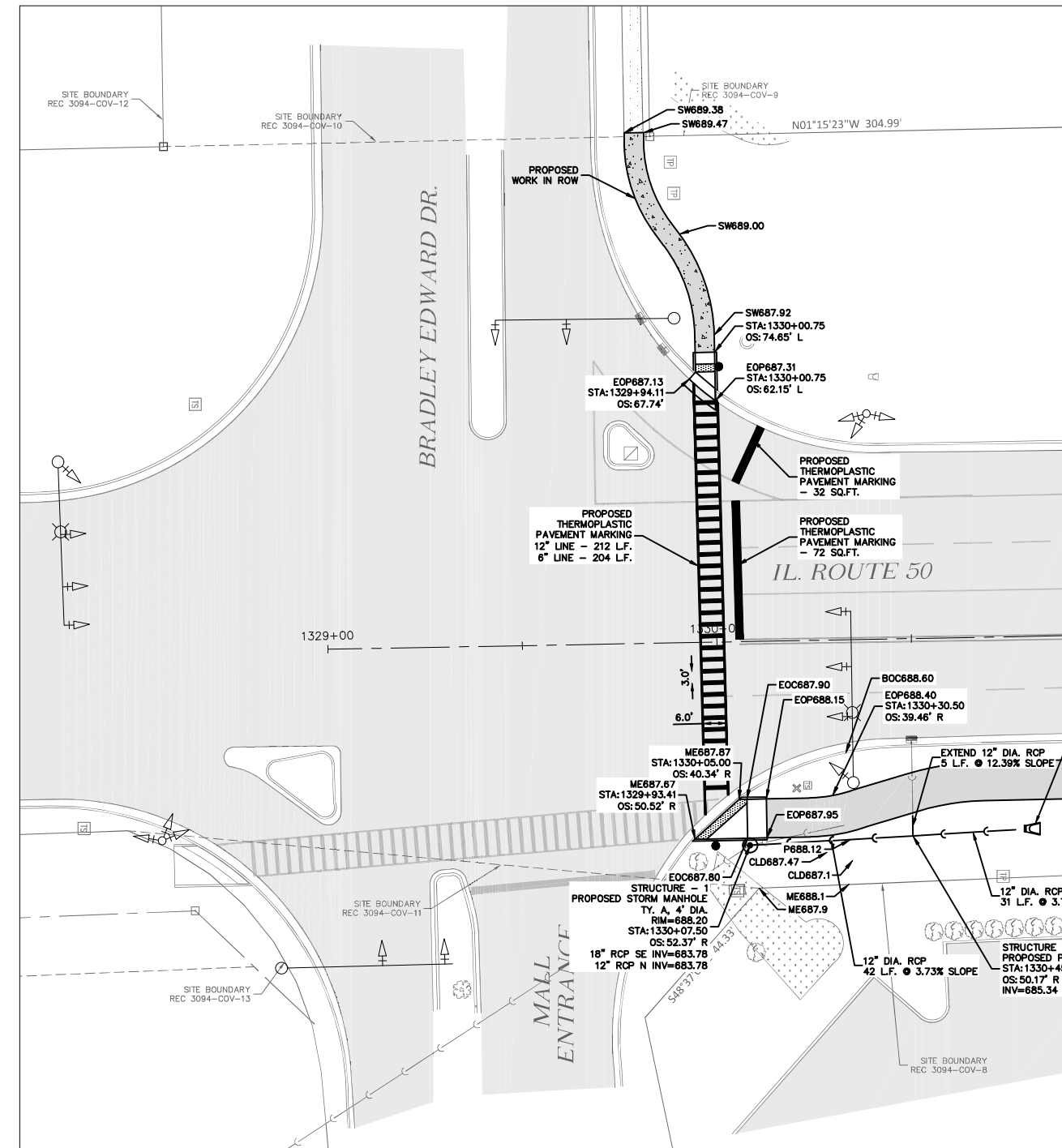
DETAILS
SCALE: DRAWN BY: MDC
DATE: 12/9/21 CHECKED BY: JWG

ROUTES	SECTION	COUNTY	TOTAL SHEETS	SHEET NO.
IL ROUTE 50 - F.A.P. 840 LARRY POWER ROAD	17-00098-00-BT	KANKAKEE	21	4
		CONTRACT NO.: 87669		

EXISTING CONDITIONS

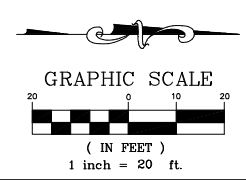


PROPOSED CONDITIONS



MATCHLINE - SHEET 2

MATCHLINE - SHEET 2



REVISIONS		
DATE	BY	DESCRIPTION

MG²A CIVIL ENGINEERING SURVEYING

M GINGERICH GEREAX & ASSOCIATES
 Professional Design Firm License # 184.001808
 P. 815-939-4921 www.mg2a.com F. 815-939-9810
 240 N. INDUSTRIAL DRIVE | BRADLEY, IL. 60915

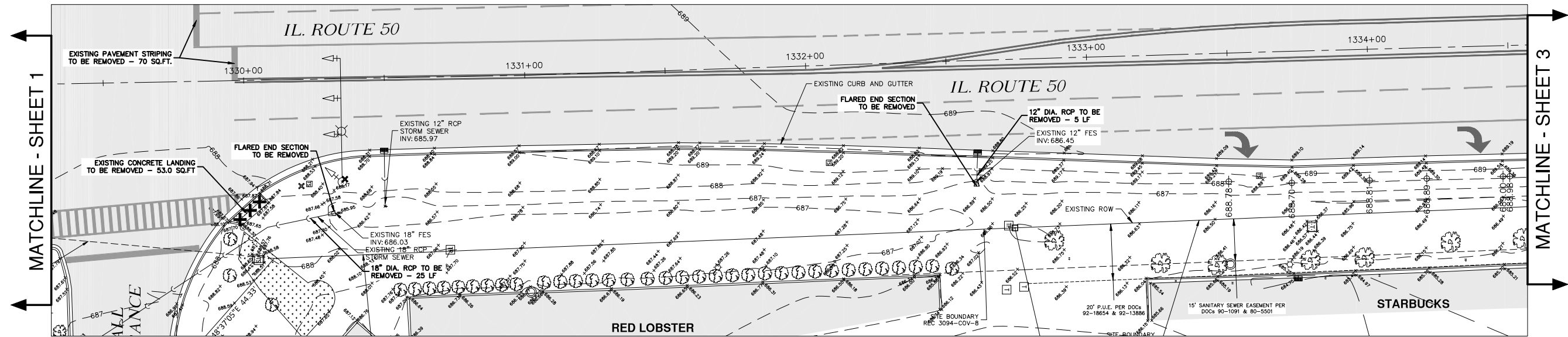
ILLINOIS DEPARTMENT OF TRANSPORTATION
 ITEP - ILLINOIS ROUTE 50 SHARED PATH
 MALL ENTRANCE TO LARRY POWER ROAD

PRELIMINARY PLANS

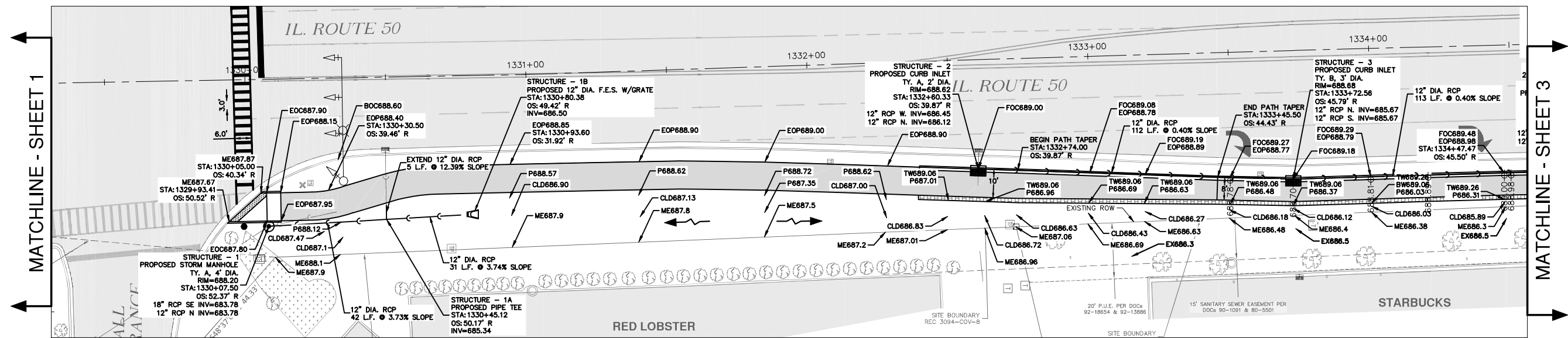
SCALE: DATE: 12/9/21 DRAWN BY: MDC CHECKED BY: JWG

ROUTES	SECTION	COUNTY	TOTAL SHEETS	SHEET NO.
IL ROUTE 50 - F.A.P. 840 LARRY POWER ROAD	17-00098-00-BT	KANKAKEE	21	5
			CONTRACT NO.: 87669	

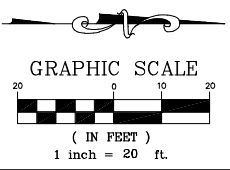
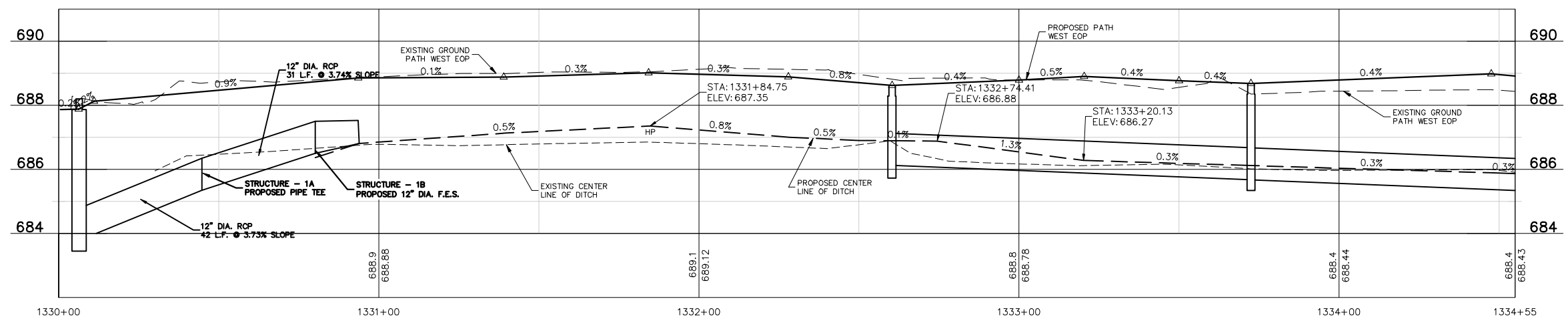
EXISTING CONDITIONS



PROPOSED CONDITIONS



PATH W EOP PROFILE



REVISIONS		
DATE	BY	DESCRIPTION

MGA² CIVIL ENGINEERING SURVEYING

M GINGERICH GEREAX & ASSOCIATES
 Professional Design Firm License # 184.001808
 P. 815-939-4921 www.mg2a.com F. 815-939-9810
 240 N. INDUSTRIAL DRIVE | BRADLEY, IL. 60915

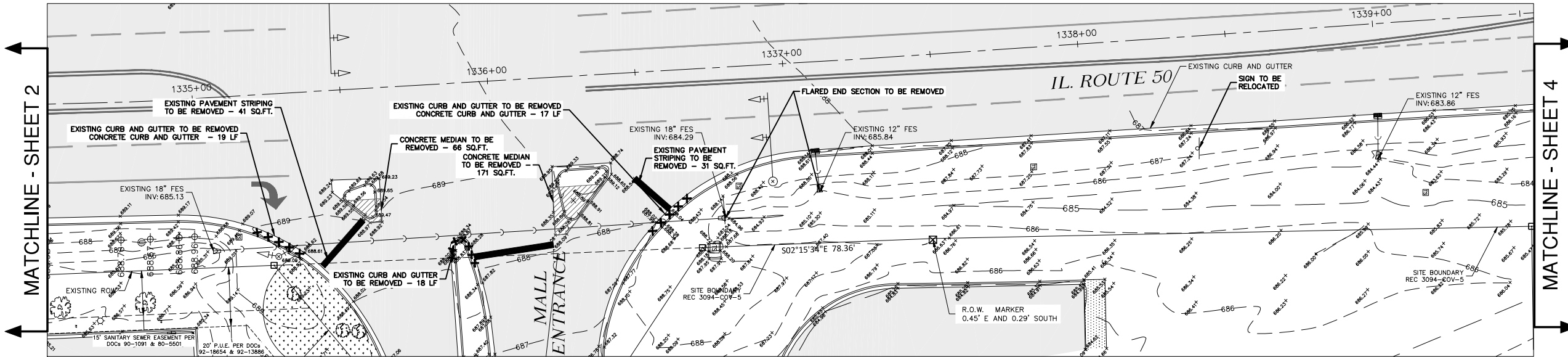
ILLINOIS DEPARTMENT OF TRANSPORTATION
 ITEP - ILLINOIS ROUTE 50 SHARED PATH
 MALL ENTRANCE TO LARRY POWER ROAD

PRELIMINARY PLANS

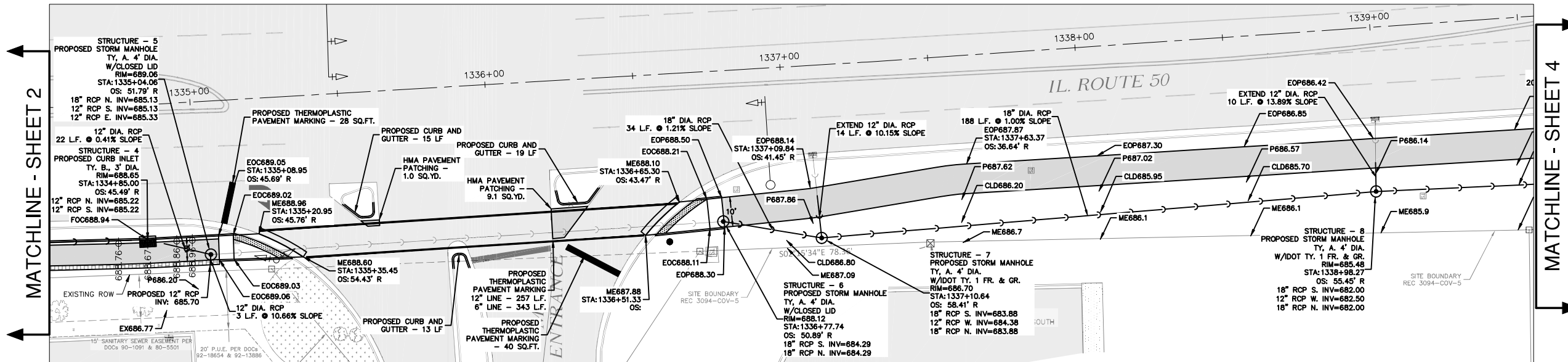
SCALE: DATE: 12/9/21 DRAWN BY: MDC CHECKED BY: JWG

ROUTES	SECTION	COUNTY	TOTAL SHEETS	SHEET NO.
IL ROUTE 50 - F.A.P. 840 LARRY POWER ROAD	17-00098-00-BT	KANKAKEE	21	6
			CONTRACT NO.: 87669	

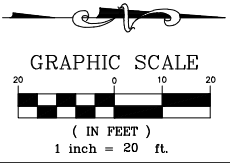
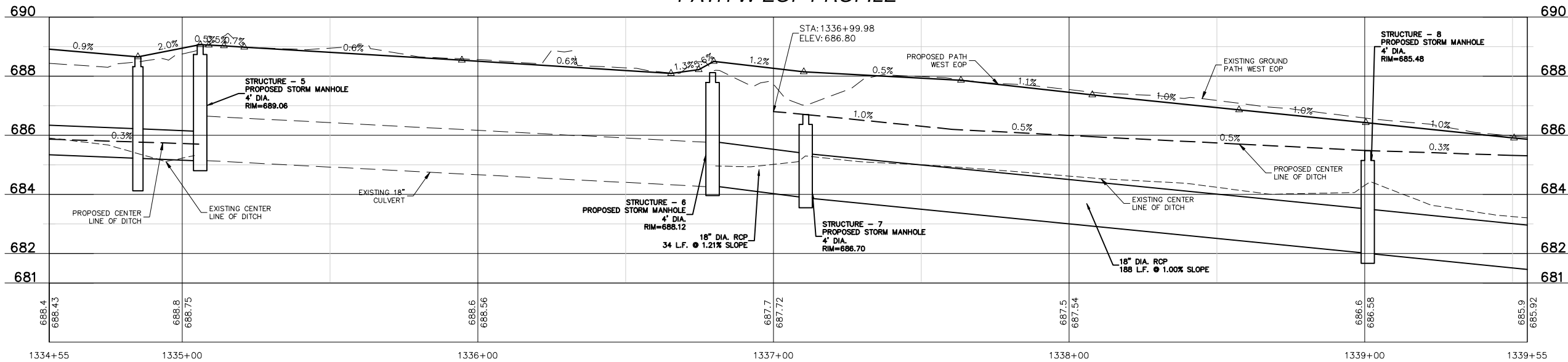
EXISTING CONDITIONS



PROPOSED CONDITIONS



PATH W EOP PROFILE



REVISIONS		
DATE	BY	DESCRIPTION

MGA² CIVIL ENGINEERING SURVEYING
M GINGERICH GEREAX & ASSOCIATES
Professional Design Firm License # 184.001808
P. 815-939-4921 www.mg2a.com F. 815-939-9810
240 N. INDUSTRIAL DRIVE | BRADLEY, IL. 60915

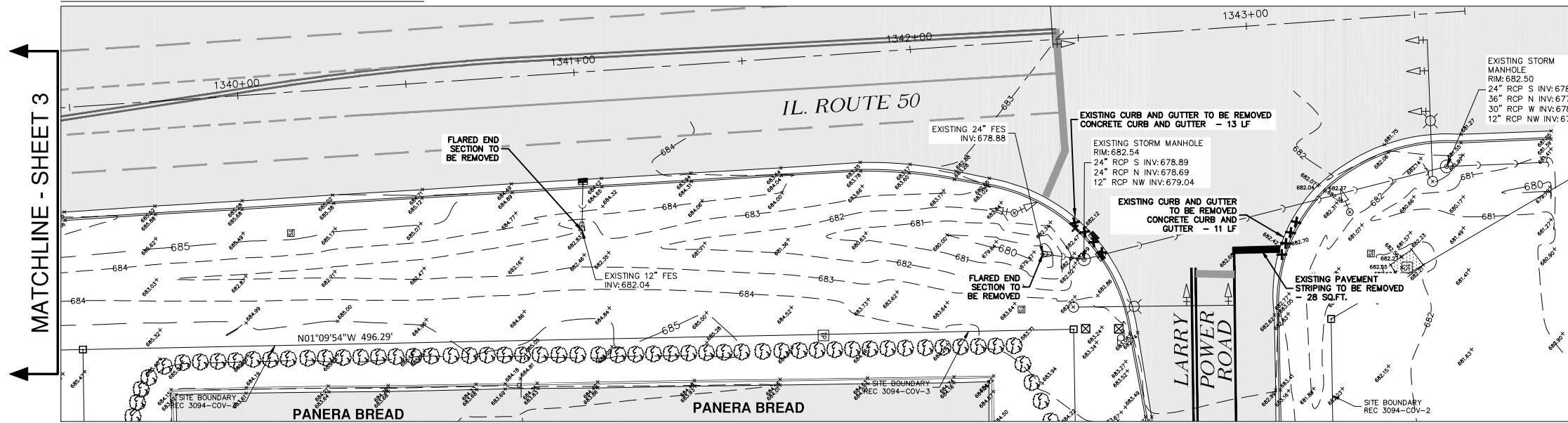
ILLINOIS DEPARTMENT OF TRANSPORTATION
ITEP - ILLINOIS ROUTE 50 SHARED PATH
MALL ENTRANCE TO LARRY POWER ROAD

PRELIMINARY PLANS

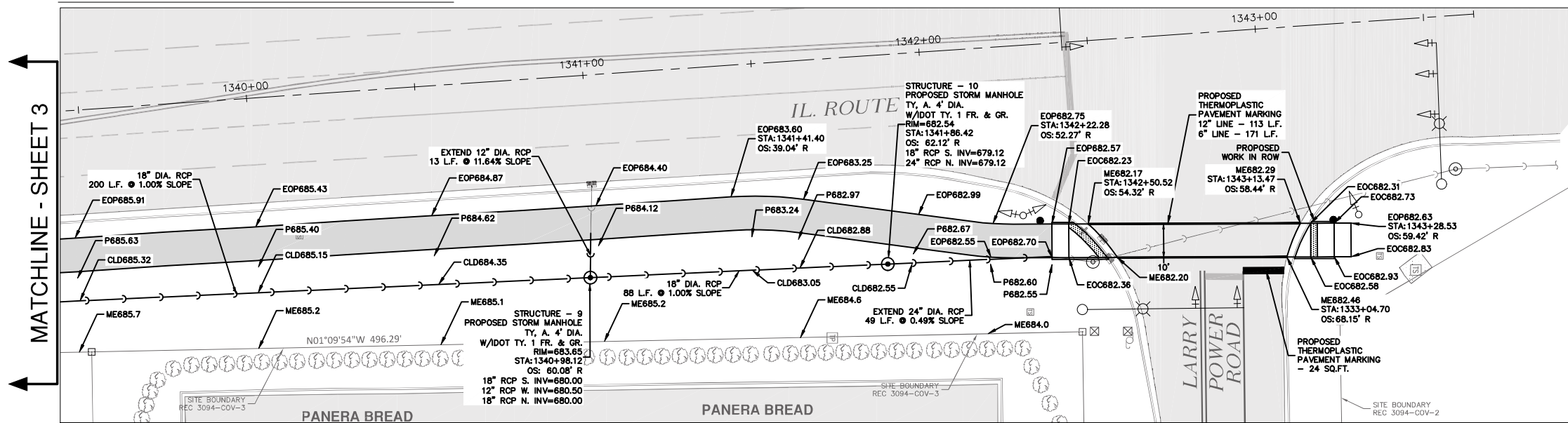
SCALE: DATE: 12/9/21 DRAWN BY: MDC CHECKED BY: JWG

ROUTES	SECTION	COUNTY	TOTAL SHEETS	SHEET NO.
IL ROUTE 50 - F.A.P. 840 LARRY POWER ROAD	17-00098-00-BT	KANKAKEE	21	7
			CONTRACT NO.: 87669	

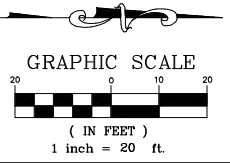
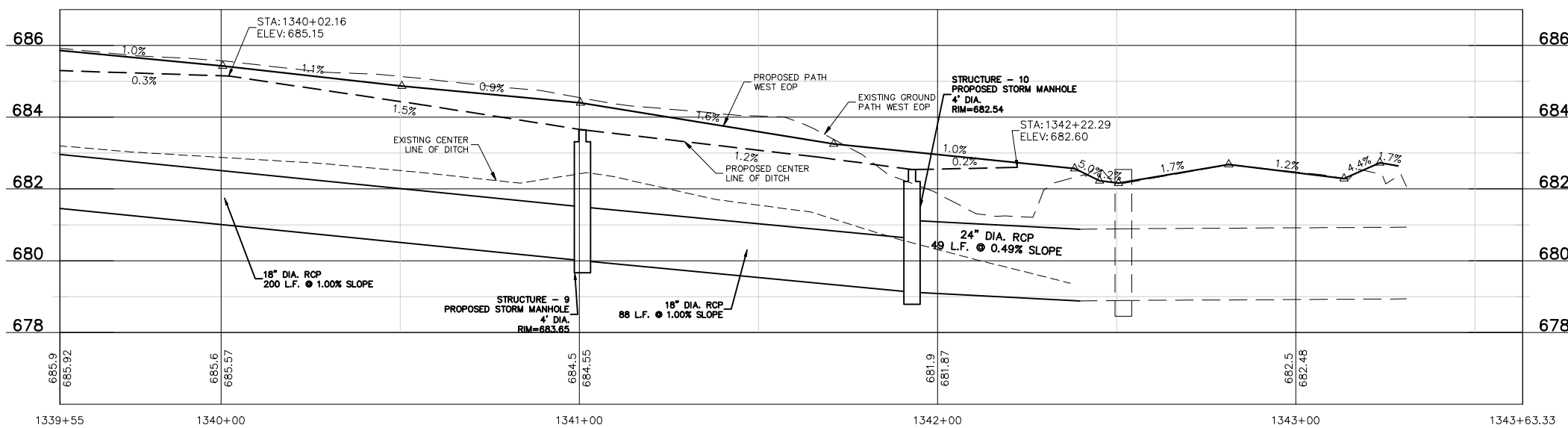
EXISTING CONDITIONS



PROPOSED CONDITIONS



PATH W EOP PROFILE



REVISIONS		
DATE	BY	DESCRIPTION

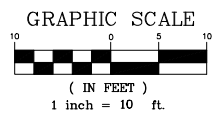
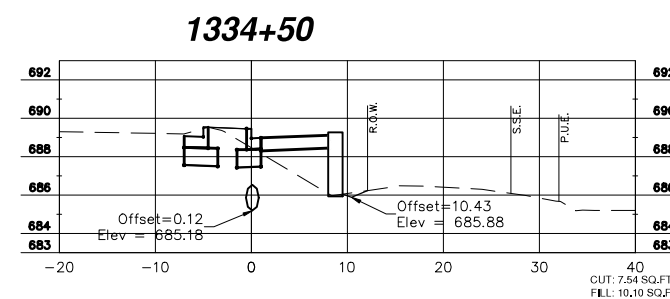
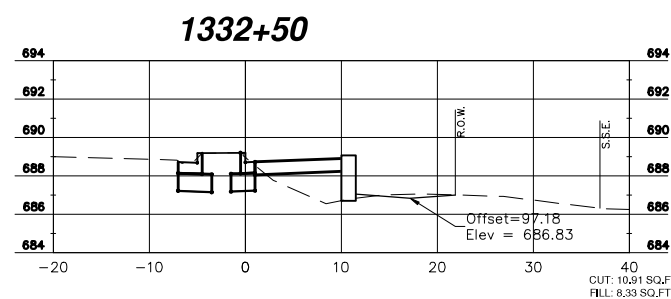
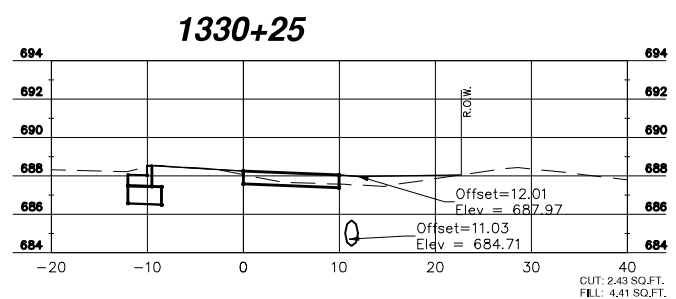
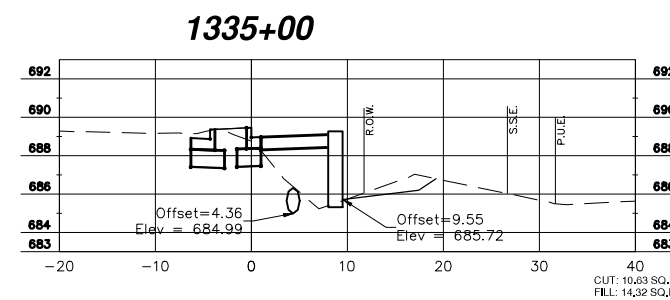
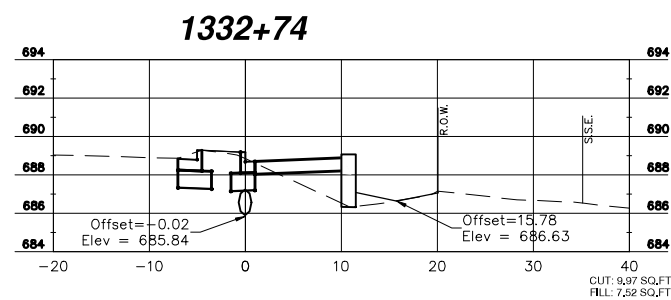
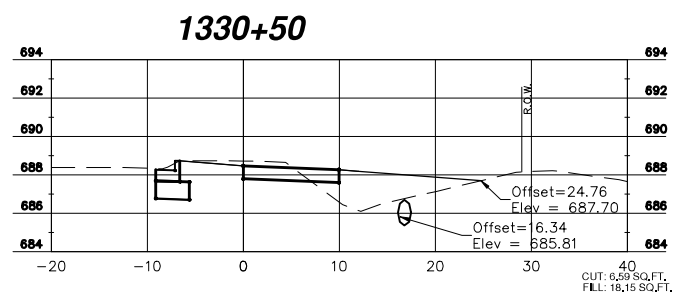
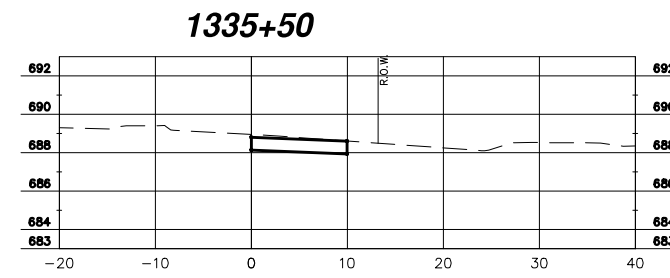
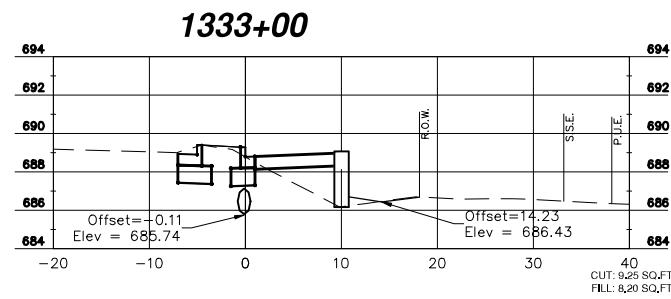
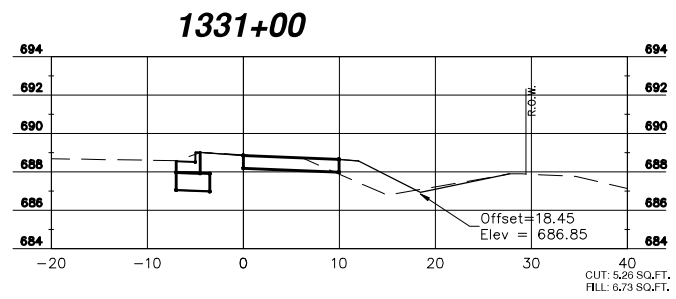
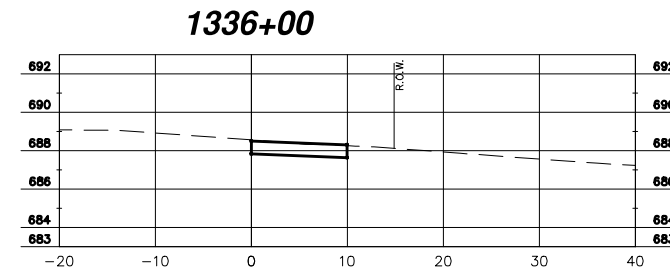
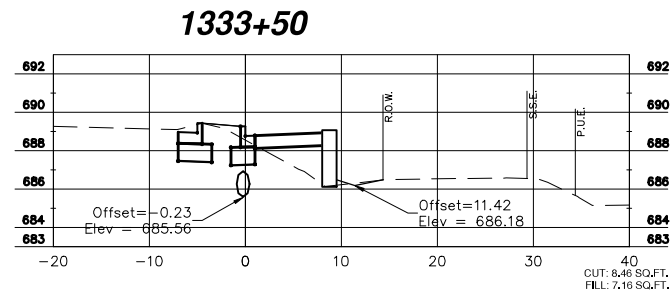
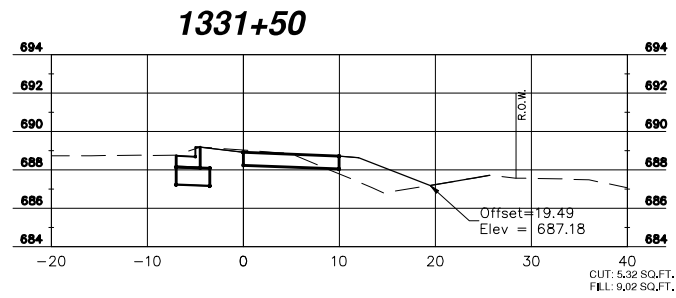
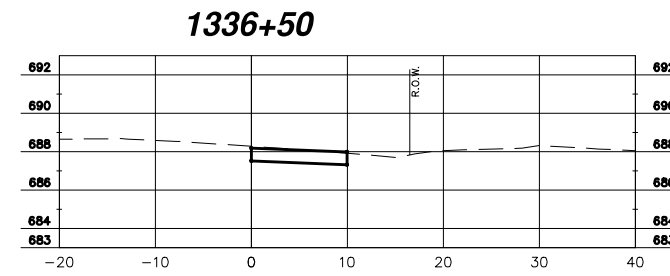
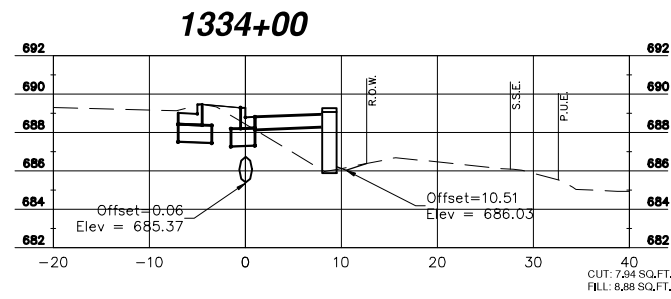
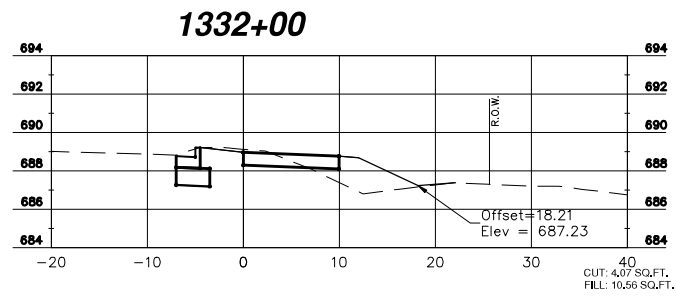
MGA² CIVIL ENGINEERING SURVEYING
M GINGERICH GEREAX & ASSOCIATES
Professional Design Firm License # 184.001808
P. 815-939-4921 www.mg2a.com F. 815-939-9810
240 N. INDUSTRIAL DRIVE | BRADLEY, IL. 60915

ILLINOIS DEPARTMENT OF TRANSPORTATION
ITEP - ILLINOIS ROUTE 50 SHARED PATH
MALL ENTRANCE TO LARRY POWER ROAD

PRELIMINARY PLANS

SCALE: DATE: 12/9/21 DRAWN BY: MDC CHECKED BY: JWG

ROUTES	SECTION	COUNTY	TOTAL SHEETS	SHEET NO.
IL ROUTE 50 - F.A.P. 840 LARRY POWER ROAD	17-00098-00-BT	KANKAKEE	21	8
CONTRACT NO.: 87669				



REVISIONS		
DATE	BY	DESCRIPTION

MG² CIVIL ENGINEERING SURVEYING

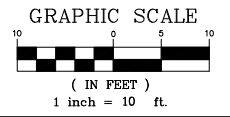
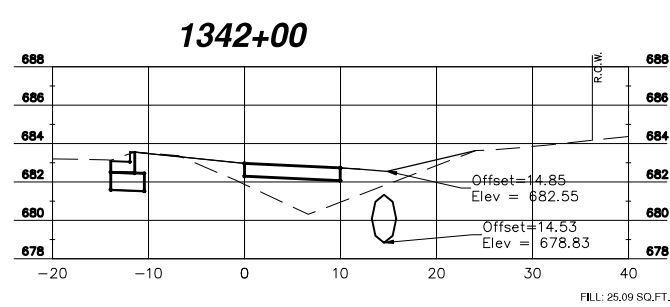
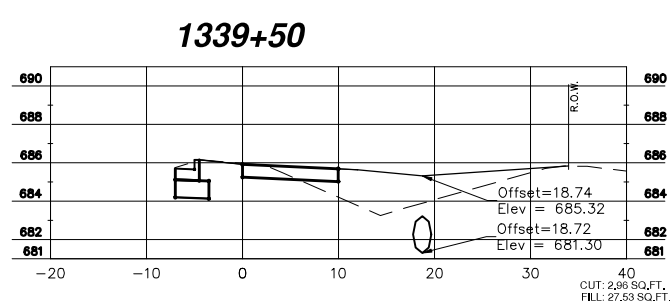
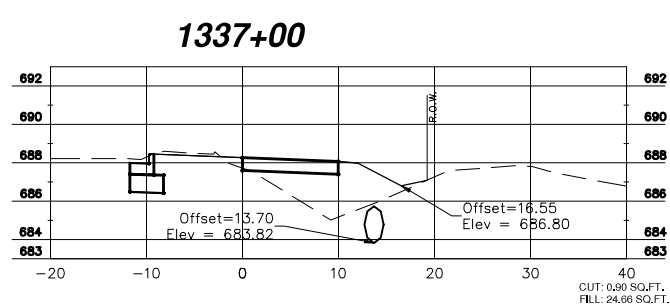
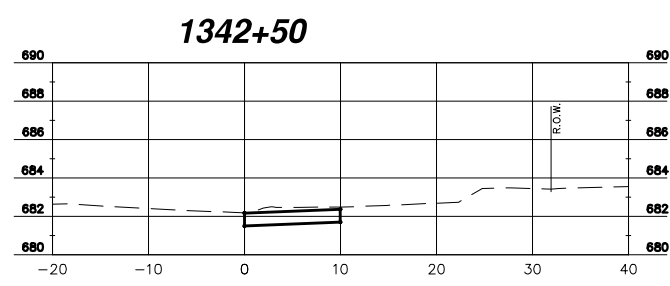
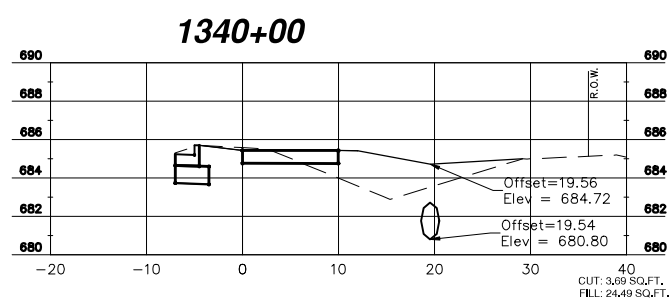
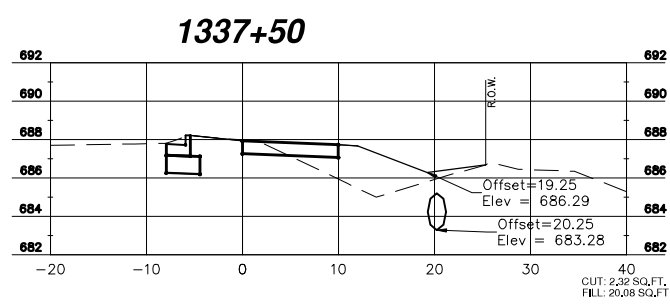
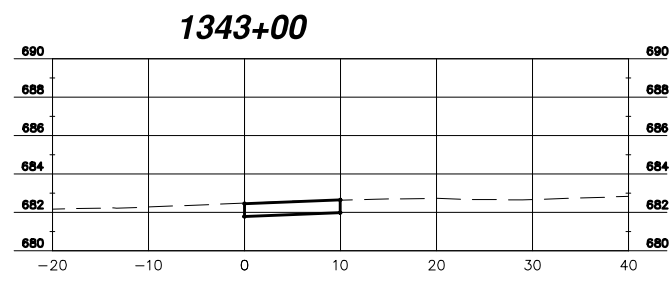
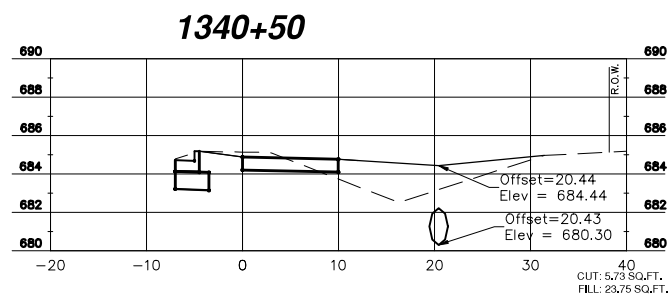
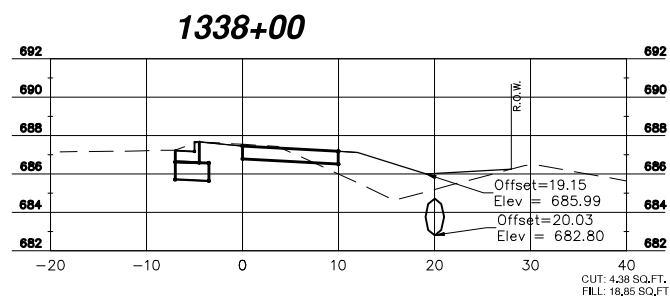
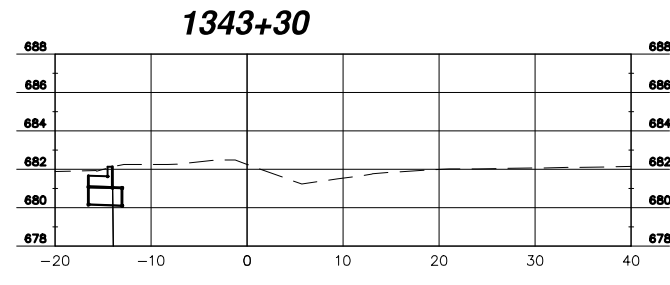
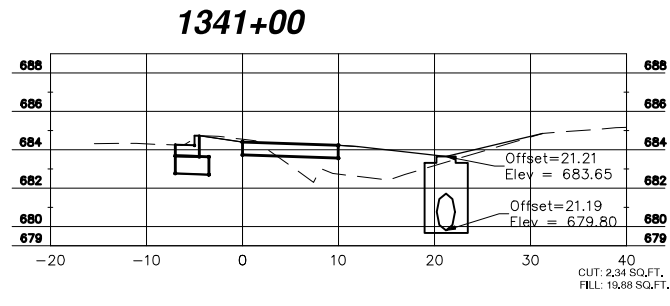
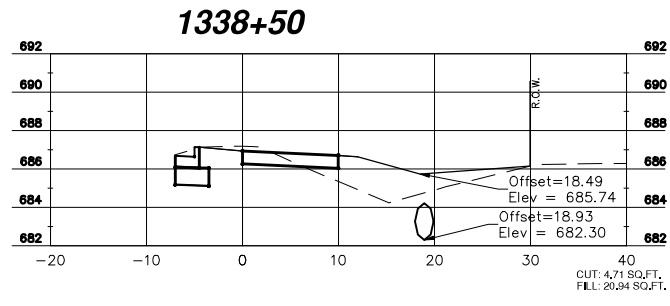
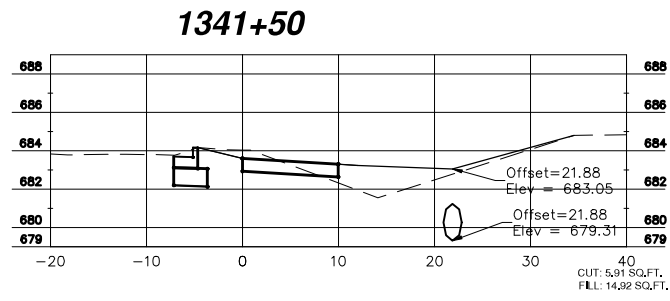
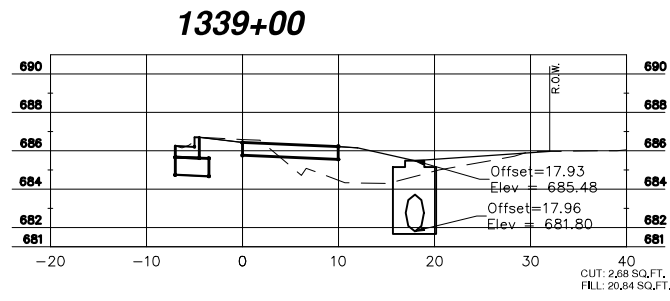
M GINGERICH GEREAX & ASSOCIATES
Professional Design Firm License # 184.001808
P. 815-939-4921 www.mg2a.com F. 815-939-9810
240 N. INDUSTRIAL DRIVE | BRADLEY, IL. 60915

ILLINOIS DEPARTMENT OF TRANSPORTATION
ITEP - ILLINOIS ROUTE 50 SHARED PATH
MALL ENTRANCE TO LARRY POWER ROAD

CROSS SECTIONS

SCALE: DATE: 12/9/21 DRAWN BY: MDC CHECKED BY: JWG

ROUTES	SECTION	COUNTY	TOTAL SHEETS	SHEET NO.
IL ROUTE 50 - F.A.P. 840 LARRY POWER ROAD	17-00098-00-BT	KANKAKEE	21	9
CONTRACT NO.: 87669				



REVISIONS		
DATE	BY	DESCRIPTION

MG² CIVIL ENGINEERING SURVEYING

M GINGERICH GEREAX & ASSOCIATES
Professional Design Firm License # 184.001808
P. 815-939-4921 www.mg2a.com F. 815-939-9810
240 N. INDUSTRIAL DRIVE | BRADLEY, IL. 60915

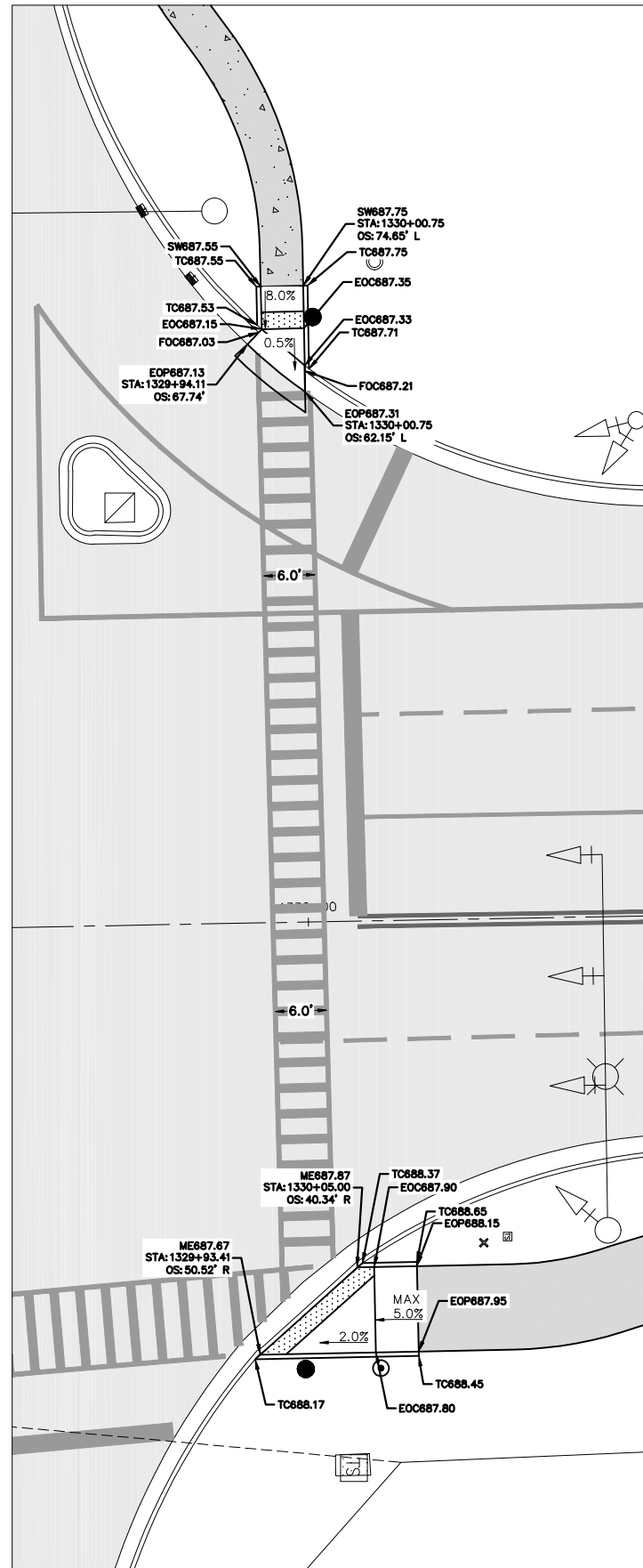
ILLINOIS DEPARTMENT OF TRANSPORTATION
ITEP - ILLINOIS ROUTE 50 SHARED PATH
MALL ENTRANCE TO LARRY POWER ROAD

CROSS SECTIONS

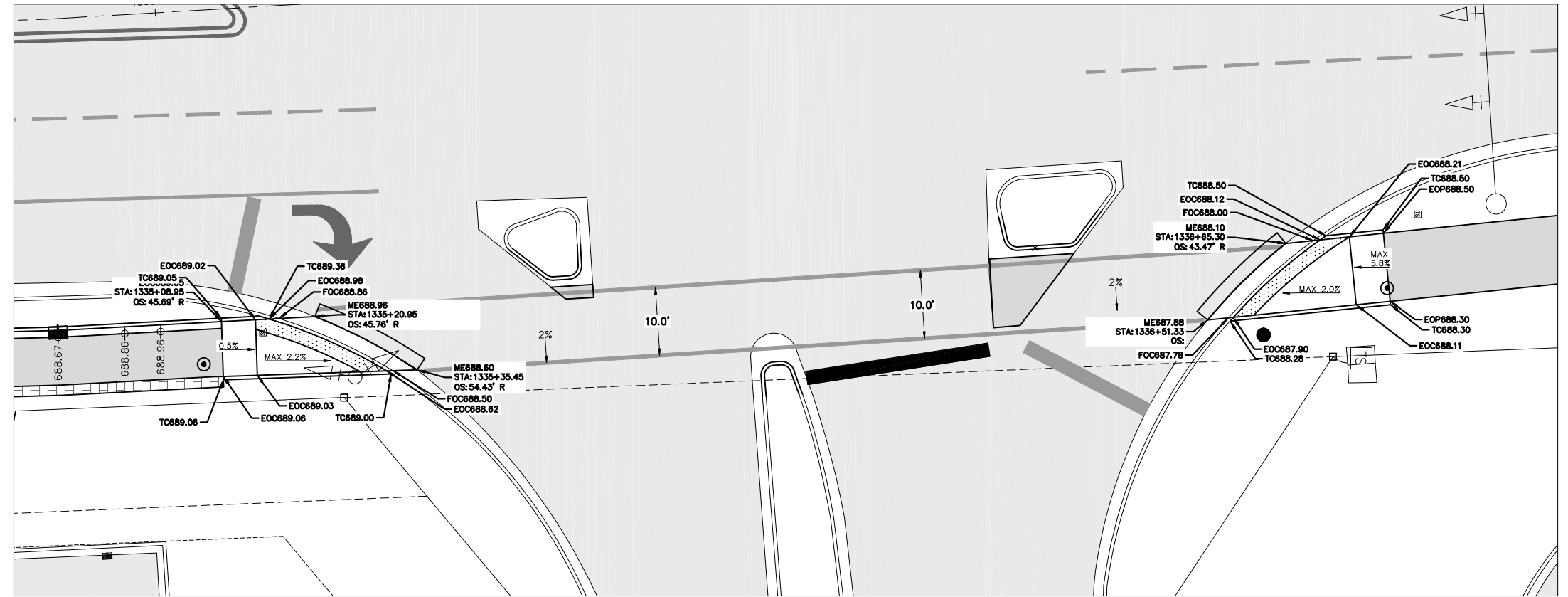
SCALE: DATE: 12/9/21 DRAWN BY: MDC CHECKED BY: JWG

ROUTES	SECTION	COUNTY	TOTAL SHEETS	SHEET NO.
IL ROUTE 50 - F.A.P. 840 LARRY POWER ROAD	17-00098-00-BT	KANKAKEE	21	10
			CONTRACT NO.: 87669	

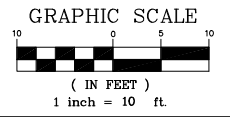
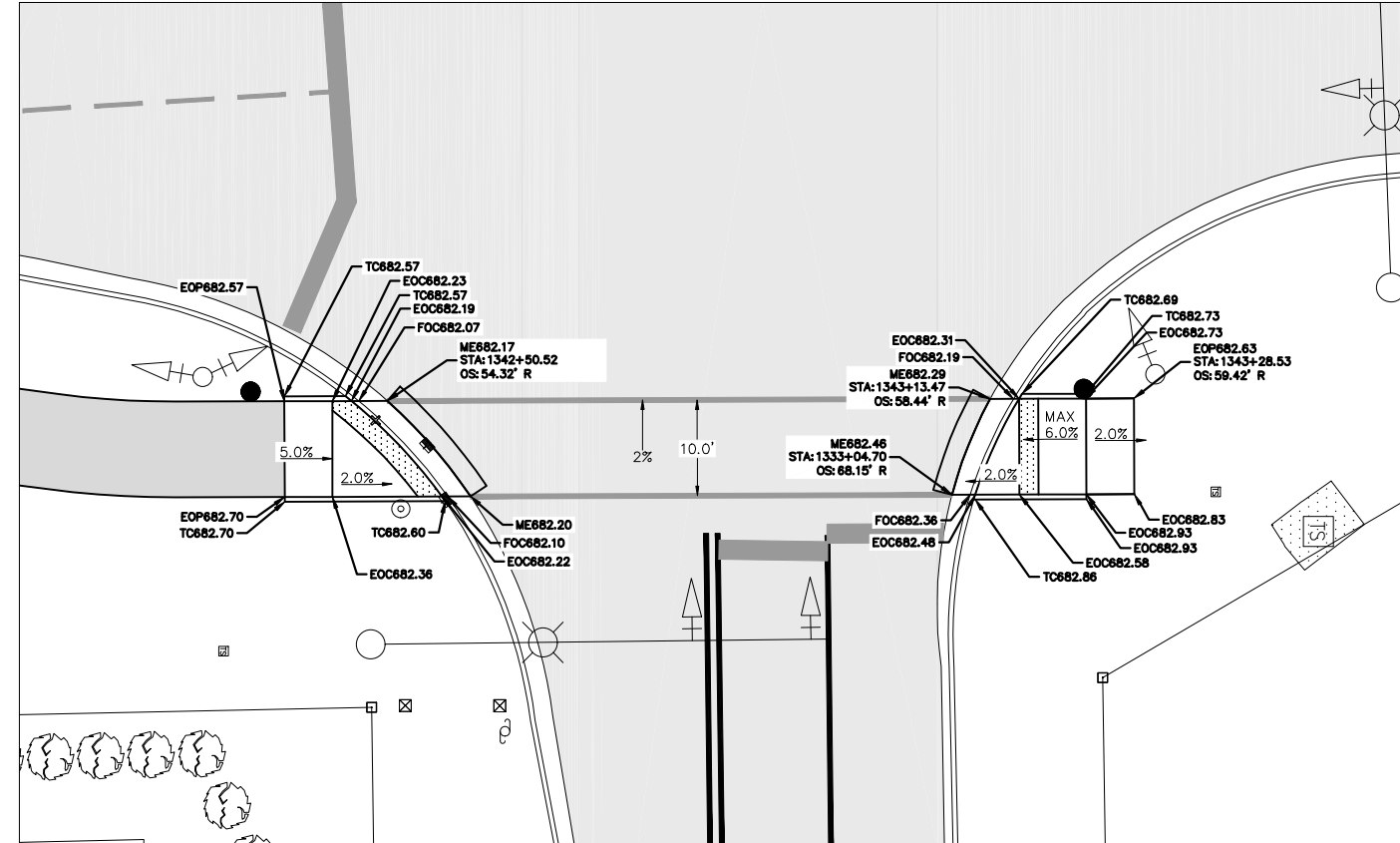
SOUTH MALL ENTRANCE



NORTH MALL ENTRANCE



LARRY POWER ROAD



REVISIONS		
DATE	BY	DESCRIPTION

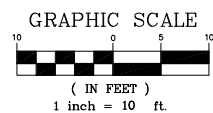
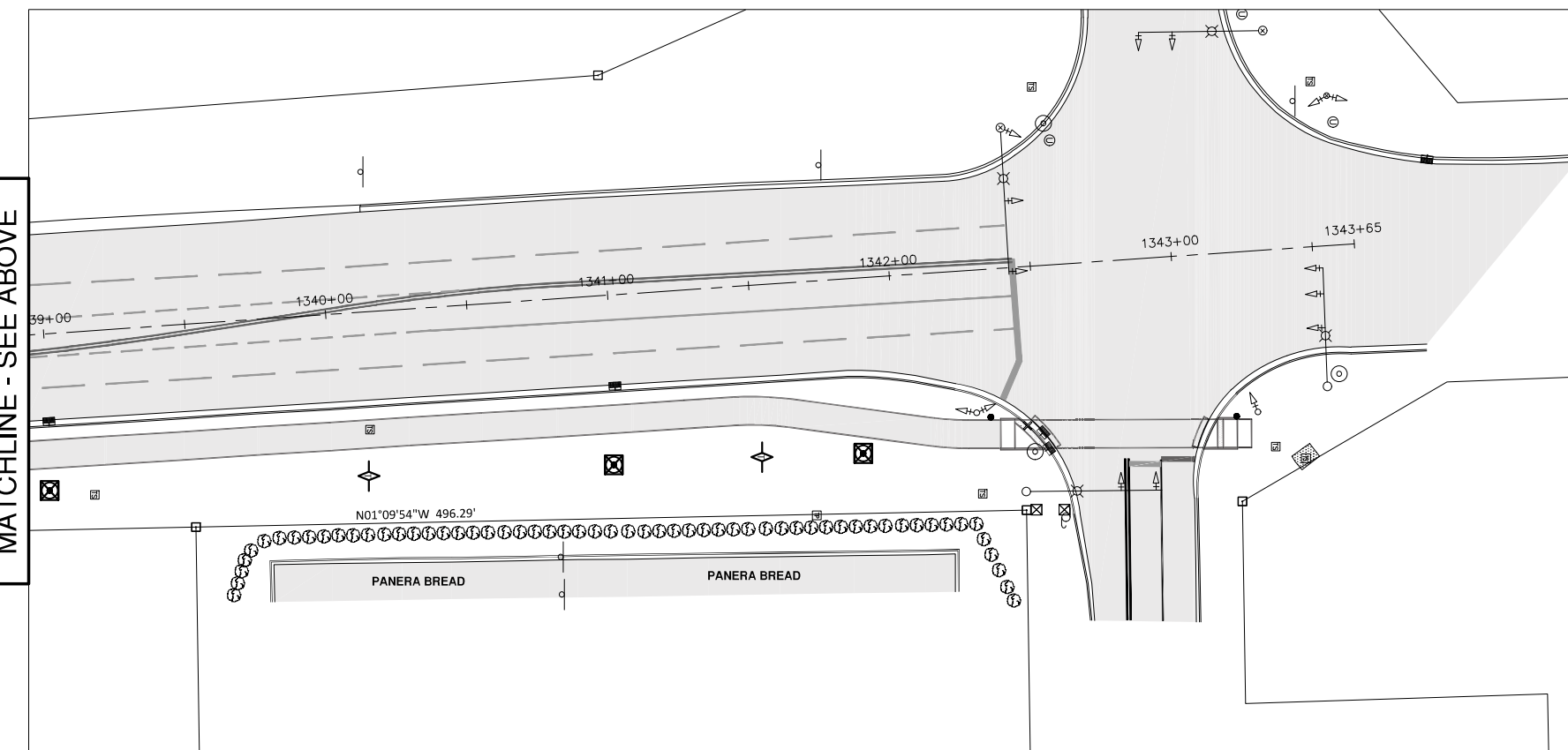
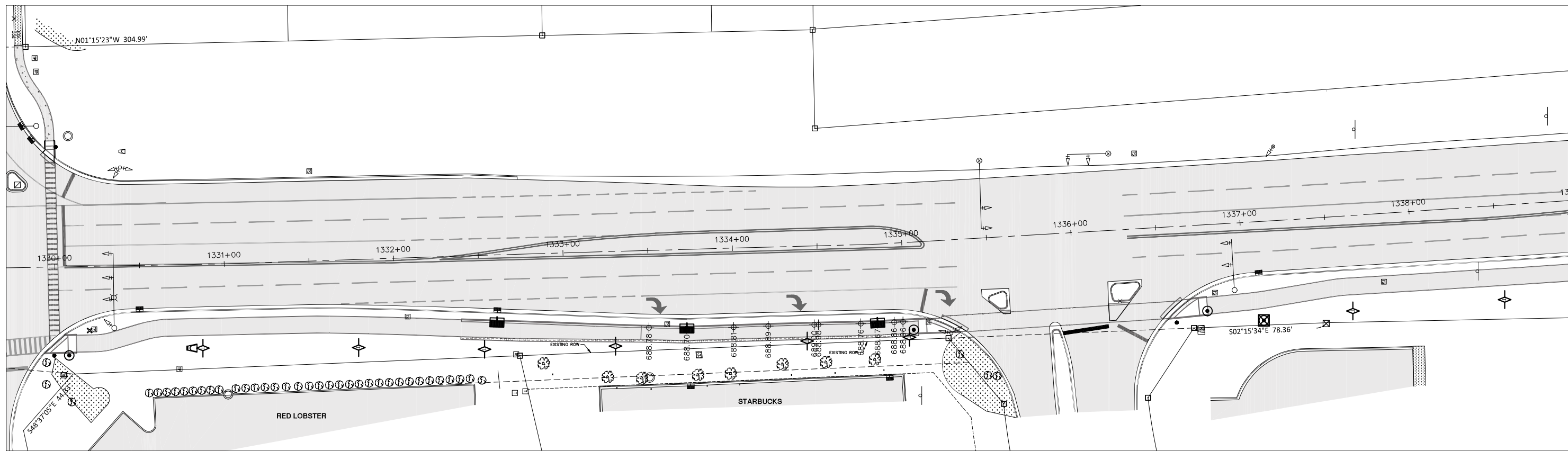
MGA² CIVIL ENGINEERING SURVEYING
M GINGERICH GEREAX & ASSOCIATES
 Professional Design Firm License # 184.001808
 P. 815-939-4921 www.mg2a.com F. 815-939-9810
 240 N. INDUSTRIAL DRIVE | BRADLEY, IL. 60915

ILLINOIS DEPARTMENT OF TRANSPORTATION
 ITEP - ILLINOIS ROUTE 50 SHARED PATH
 MALL ENTRANCE TO LARRY POWER ROAD

ADA DETAILS

SCALE: DATE: 12/9/21 DRAWN BY: MDC CHECKED BY: JWG

ROUTES	SECTION	COUNTY	TOTAL SHEETS	SHEET NO.
IL ROUTE 50 - F.A.P. 840 LARRY POWER ROAD	17-00098-00-BT	KANKAKEE	21	11
			CONTRACT NO.: 87669	



REVISIONS		
DATE	BY	DESCRIPTION

MGA² CIVIL ENGINEERING SURVEYING

M GINGERICH GEREAX & ASSOCIATES
Professional Design Firm License # 184.001808
P. 815-939-4921 www.mg2a.com F. 815-939-9810
240 N. INDUSTRIAL DRIVE | BRADLEY, IL. 60915

ILLINOIS DEPARTMENT OF TRANSPORTATION
ITEP - ILLINOIS ROUTE 50 SHARED PATH
MALL ENTRANCE TO LARRY POWER ROAD

S.W.P.P.P.

SCALE: DATE: 12/9/21 DRAWN BY: MDC CHECKED BY: JWG

TRAFFIC SIGNAL GENERAL NOTES

1. THE CONTRACTOR SHALL CONTACT CITY OF BRADLEY A MINIMUM OF 72 HOURS PRIOR TO BEGINNING WORK.
2. THE TRAFFIC SIGNAL SECTION AT THE DEPARTMENT OF TRANSPORTATION, DISTRICT 3, SHALL BE NOTIFIED AT (815) 434-8506 AT LEAST 72 HOURS PRIOR TO TURNING ON ANY FLASHER OR CONTROL UNIT.
3. THE CONTRACTOR SHALL BE RESPONSIBLE FOR PROTECTING UTILITY PROPERTY DURING CONSTRUCTION OPERATIONS AS OUTLINED IN ARTICLE 107.31 OF THE STANDARD SPECIFICATIONS. A MINIMUM OF 48 HOURS ADVANCE NOTICED IS REQUIRED FOR NON-EMERGENCY WORK. THE JULIE NUMBER IS (800) 892-0123
4. ALL TRAFFIC CONTROL AND OTHER ADVISORY SIGNS NEEDED FOR CONSTRUCTION ARE FURNISHED BY THE CONTRACTOR IN ACCORDANCE WITH SECTION 701 OF THE STANDARD SPECIFICATIONS.
5. ALL TRAFFIC SIGNAL HEADS SHALL BE 12-INCH POLYCARBONATE.
6. TRAFFIC SIGNAL HEADS SHALL BE PROPERLY COVERED PRIOR TO INTERSECTION TURN-ON OR AS DIRECTED BY THE ENGINEER. THIS COST SHALL BE INCLUDED WITH THE COST OF THE ASSOCIATED TRAFFIC SIGNAL PAY ITEMS.
7. A ¼"DIAMETER CONTINUOUS RODENT RESISTANT NYLON ROPE SHALL BE FURNISHED AND LEFT IN PLACE IN ALL CONDUITS BETWEEN HANDHOLES AND FOUNDATIONS OR CONTROLLER. THIS COST SHALL BE INCLUDED IN THE COST OF THE CONDUIT PAY ITEM.
8. THE CONTRACTOR SHALL ARRANGE FOR A FACTORY OR SUPPLIER REPRESENTATIVE TO BE PRESENT AT THE INTERSECTION WHEN THE SIGNAL IS TURNED ON. COST TO BE INCLUDED IN THE TRAFFIC SIGNAL CONTROLLER PAY ITEM.
9. ALL CONDUIT IN TRENCH SHALL BE PVC. CONDUIT PUSHED MAY BE PVC OR GALVANIZED STEEL. CONDUIT ATTACHED TO STRUCTURES SHALL BE GALVANIZED STEEL.
10. NO ADDITIONAL COMPENSATION WILL BE ALLOWED FOR PLACING CONDUIT AT GREATER THAN 2' MINIMUM DEPTH TO AVOID OBSTACLES SUCH AS UNDERGROUND UTILITIES.
11. THE ELECTRICAL CONDUCTORS FOR ALL TRAFFIC SIGNAL HEADS SHALL BE SOLID, SOFT COPPER.
12. ALL THREADS OF BOLTS USED IN ASSEMBLY OF TRAFFIC SIGNAL COMPONENTS SHALL BE COATED WITH NON-LEAD BASED ANTI-SEIZE COMPOUND, SIMILAR TO LEAD PLATE, PRIOR TO ASSEMBLY.
13. ALL HARDWARE SHALL BE TIGHTENED AND WELL SECURED. CABLES SHALL BE NEATLY WOUND IN HANDHOLES. CABLES SHALL BE NEATLY TRAINED IN THE CONTROLLER CABINET.
14. ALL TRAFFIC SIGNAL WIRING SHALL EXTEND FROM CONTROLLER TO SIGNAL. SPLICES IN JUNCTION BOXES WILL NOT BE ALLOWED.
15. THE CONTROLLER CABINET SHALL BE PLACED SO THAT A TECHNICIAN MAY SEE THE INTERSECTION OVER THE TOP OF THE CABINET WHILE WATCHING THE COMPONENTS OF THE CABINET.
16. THE PROPOSED TRAFFIC SIGNAL CONTROLLER CABINET SHALL BE FURNISHED WITH A MANUAL CONTROL SWITCH AND MANUAL CONTROL CORD WITHIN THE POLICE DOOR COMPARTMENT. THIS WORK SHALL BE INCLUDED IN THE CONTROLLER CABINET PAY ITEM.
17. THE CONTRACTOR SHALL PROVIDE A SELF-ADHERED PHASE DIAGRAM ON THE INSIDE OF THE CONTROLLER CABINET DOOR.
18. THE CONTRACTOR SHALL BE RESPONSIBLE FOR OBTAINING ELECTRICAL SERVICE FOR THE TRAFFIC SIGNALS. THE CONTRACTOR SHALL CONTACT THE UTILITY COMPANY PRIOR TO BEGINNING WORK TO OBTAIN THE UTILITY COMPANY REQUIREMENTS FOR THE SERVICE INSTALLATION.
19. THE CONTRACTOR SHALL CONTACT THE VILLAGE OF BRADLEY, IDOT, AND UTILITY COMPANY FOR THE TELEPHONE CONNECTION TO THE MASTER CONTROLLER.
20. THE ELEVATION OF THE TOP OF THE DOUBLE HANDHOLE SHALL BE LESS THAN THE ELEVATION OF THE TOP OF THE CONTROLLER FOUNDATION.
21. ALL UNINTERRUPTIBLE POWER SUPPLIES SHALL BE EQUIPPED WITH ALPHA GUARD MONITORS.
22. ALL GROUNDING MATERIALS FOR CONCRETE FOUNDATIONS SHALL REFER TO SECTION 806 OF THE STANDARD SPECIFICATIONS.
23. ALL AREAS DISTURBED BY THE CONTRACTOR SHALL BE RESTORED WITH SEED OR SOD TO THE SATISFACTION OF THE ENGINEER. SEEDING OR SODDING SHALL NOT BE PERMITTED AT ANY TIME WHEN THE GROUND IS FROZEN, WET, OR IN ANY UNTILLABLE CONDITION.
24. THE FIBER OPTIC CABLE SHALL BE LABELED WITH DIRECTION AND ASSIGNMENT NUMBER.
25. THE SURGE PROTECTOR IN THE CONTROLLER CABINET SHALL HAVE AN INDICATOR LIGHT.
26. THE MAST ARM FOUNDATIONS SHALL BE LOCATED A MINIMUM 6' FROM THE FACE OF THE CURB OR A MINIMUM OF 18' FROM THE EDGE OF THE PAVEMENT TO THE FACE OF FOUNDATION WHERE THERE IS NO CURB. UNLESS OTHERWISE DIRECTED BY THE ENGINEER, IN CURB AREA, GET MORE THAN 6' IF POSSIBLE IF THE SIGNAL HEAD LINES UP WITH THE CENTER OF THE LANE.
27. ALL MAST ARM MOUNTED SIGNAL HEADS ON INDIVIDUAL MAST ARM SHALL BE MOUNTED SO THAT THE RED INDICATORS ARE LEVEL WITH EACH OTHER.
28. BACKPLATES SHALL BE POLYCARBONATE, LOUVERED FORMED BACKPLATES.
29. ALL VEHICLES AND PEDESTRIAN SIGNAL HEADS SHALL HAVE POLYCARBONATE BLACK HOUSING AND BLACK BACKPLATES.
30. DETECTOR LOOPS SHALL BE INSTALLED PRIOR TO PLACING FINAL HMA SURFACE COURSE.
31. CONTRACTOR SHALL PROVIDE TRAFFIC SIGNAL AND LIGHTING EQUIPMENT TO WARREN NORRIS FOR REVIEW.
32. CONTRACTOR SHALL CONTACT DAN DEVINE AT 815-434-8506 FOR SIGNAL FOUNDATION LAYOUT AND FINAL INSPECTION.
33. ADJUSTMENTS OF EXISTING AND PROPOSED PEDESTRIAN PUSH BUTTONS SHALL CONFORM TO THE FOLLOWING REQUIREMENTS:
 - A.) PROPOSED PEDESTRIAN PUSH BUTTON POSTS SHALL BE LOCATED AS SHOWN IN THE ADA DETAILS.
 - B.) ALL PED PUSHBUTTONS SHALL BE WITHIN 10 INCHES FROM THE FACE OF THE CURB OR EDGE OF SIDEWALK. WHEN NEEDED, THE CONTRACTOR SHALL INSTALL PEDESTRIAN PUSH BUTTON EXTENSIONS TO MEET THIS REQUIREMENT.
 - C.) MOUNTING HEIGHT OF PEDESTRIAN PUSH-BUTTONS SHALL BE 36 INCHES (PREFERRED) FROM THE SIDEWALK SURFACE.
 - D.) PED PUSH-BUTTON POLES AT PROPOSED LOCATIONS SHALL BE FURNISHED AS NEW EQUIPMENT.
 - E.) WHEN REQUIRED, A PED PUSH-BUTTON EXTENSION SHALL BE INSTALLED TO CONFORM TO THE GENERAL REQUIREMENTS-INCLUDED IN THE COST OF ACCESSIBLE PEDESTRIAN SIGNALS (EACH).

ROUTES	SECTION	COUNTY	TOTAL SHEETS	SHEET NO.
IL ROUTE 50 - F.A.P. 840 LARRY POWER ROAD	17-00098-00-BT	KANKAKEE	21	12
			CONTRACT: 87669	

REVISIONS		
DATE	BY	DESCRIPTION

MG²A CIVIL ENGINEERING SURVEYING

M GINGERICH GEREAX & ASSOCIATES
 Professional Design Firm License # 184.001808
 P. 815-939-4921 www.mg2a.com F. 815-939-9810
 240 N. INDUSTRIAL DRIVE | BRADLEY, IL. 60915

ILLINOIS DEPARTMENT OF TRANSPORTATION
 ITEP - ILLINOIS ROUTE 50 SHARED PATH
 MALL ENTRANCE TO LARRY POWER ROAD

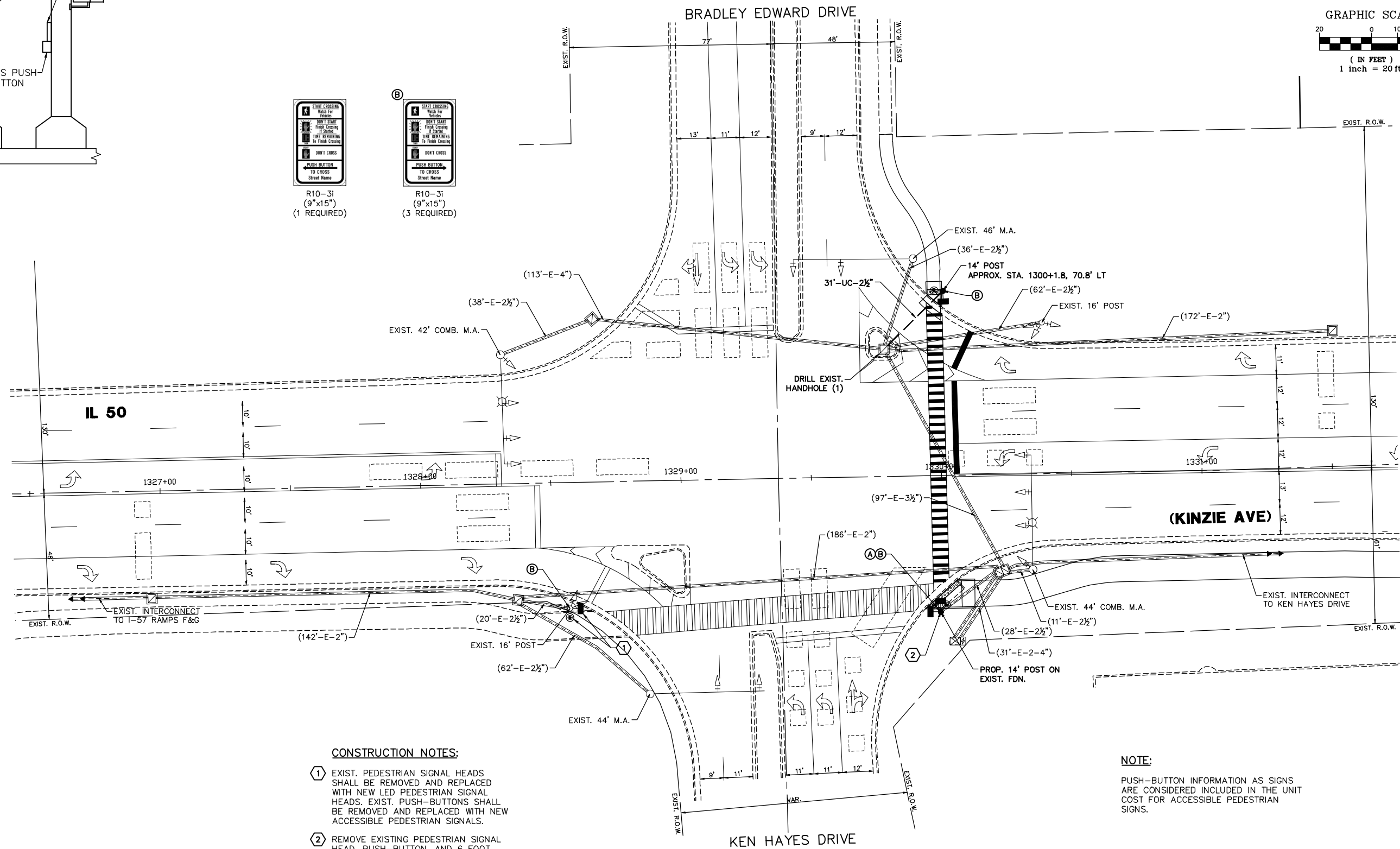
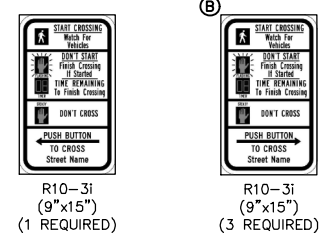
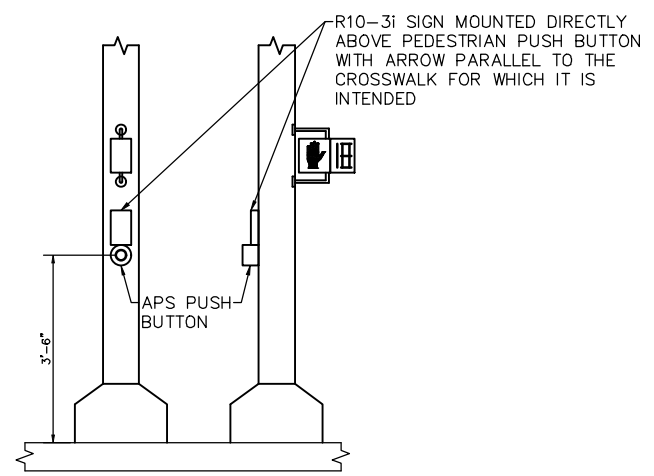
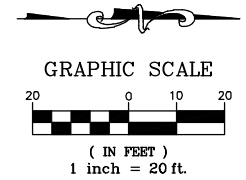
NOTES

SCALE: NONE DRAWN BY: ZCW
 DATE: 12/09/2021 CHECKED BY: DPB



625 Forest Edge Drive ■ Vernon Hills, IL. 60061

ROUTES	SECTION	COUNTY	TOTAL SHEETS	SHEET NO.
IL ROUTE 50 - F.A.P. 840 LARRY POWER ROAD	17-00098-00-BT	KANKAKEE	21	13
			CONTRACT: 87669	



CONSTRUCTION NOTES:

- ① EXIST. PEDESTRIAN SIGNAL HEADS SHALL BE REMOVED AND REPLACED WITH NEW LED PEDESTRIAN SIGNAL HEADS. EXIST. PUSH-BUTTONS SHALL BE REMOVED AND REPLACED WITH NEW ACCESSIBLE PEDESTRIAN SIGNALS.
- ② REMOVE EXISTING PEDESTRIAN SIGNAL HEAD, PUSH-BUTTON, AND 6 FOOT PEDESTRIAN POST. INSTALL NEW LED PEDESTRIAN SIGNAL HEADS AND ACCESSIBLE PEDESTRIAN SIGNALS FOR EXIST. WB AND NEW NB PEDESTRIAN CROSSINGS ON NEW 14 FOOT GALVANIZED STEEL POST. REUSE EXISTING TYPE "A" CONCRETE FOUNDATION.

NOTE:

PUSH-BUTTON INFORMATION AS SIGNS ARE CONSIDERED INCLUDED IN THE UNIT COST FOR ACCESSIBLE PEDESTRIAN SIGNS.

REVISIONS		
DATE	BY	DESCRIPTION

THE FOLLOWING ITEMS SHALL BE REMOVED BY THE CONTRACTOR AND SHALL BE DISPOSED OF BY THEM OUTSIDE THE RIGHT-OF-WAY AT THEIR EXPENSE. THE SALVAGE VALUE OF THE REMOVED EQUIPMENT SHALL BE REFLECTED IN THE CONTRACT BID PRICE.

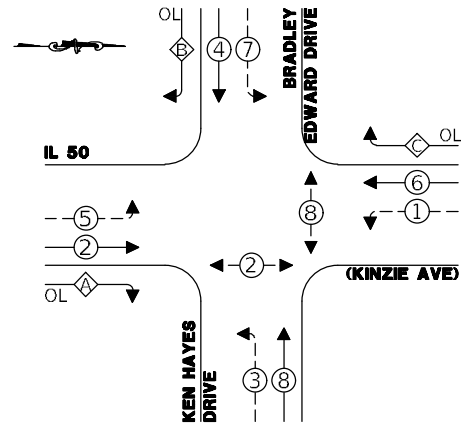
- 2 EACH PEDESTRIAN SIGNAL HEAD
- 2 EACH PEDESTRIAN PUSH-BUTTON
- 1 EACH PEDESTRIAN SIGNAL POST

MGA² CIVIL ENGINEERING SURVEYING
M GINGERICH GEREAX & ASSOCIATES
Professional Design Firm License # 184.001808
P. 815-939-4921 www.mg2a.com F. 815-939-9810
240 N. INDUSTRIAL DRIVE | BRADLEY, IL. 60915

GHA GEWALT HAMILTON ASSOCIATES, INC.
625 Forest Edge Drive ■ Vernon Hills, IL. 60061

ILLINOIS DEPARTMENT OF TRANSPORTATION
ITEP - ILLINOIS ROUTE 50 SHARED PATH
MALL ENTRANCE TO LARRY POWER ROAD
TRAFFIC SIGNAL MODIFICATION PLAN - IL 50 (KINZIE AVE)
AT BRADLEY EDWARD DRIVE / KEN HAYES DRIVE
SCALE: 1"=20'
DATE: 12/09/2021
DRAWN BY: ZCW
CHECKED BY: DPB

PROPOSED CONTROLLER SEQUENCE



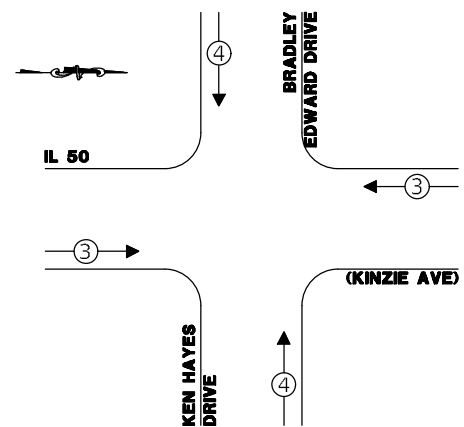
LEGEND:

- ← ⊙ ← PROTECTED PHASE
- ← ⊙ ← PROTECTED/PERMITTED PHASE
- ← ⊙ → PEDESTRIAN PHASE
- ← ⊙ OL OVERLAP

RIGHT TURN OVERLAP PHASE DESIGNATION:

OVERLAP LETTER	PERMISSIVE PHASE	PROTECTED PHASE
A	= 2	+ 3
B	= 4	+ 5
C	= 6	+ 7

EXISTING & PROPOSED EMERGENCY VEHICLE PREEMPTION SEQUENCE



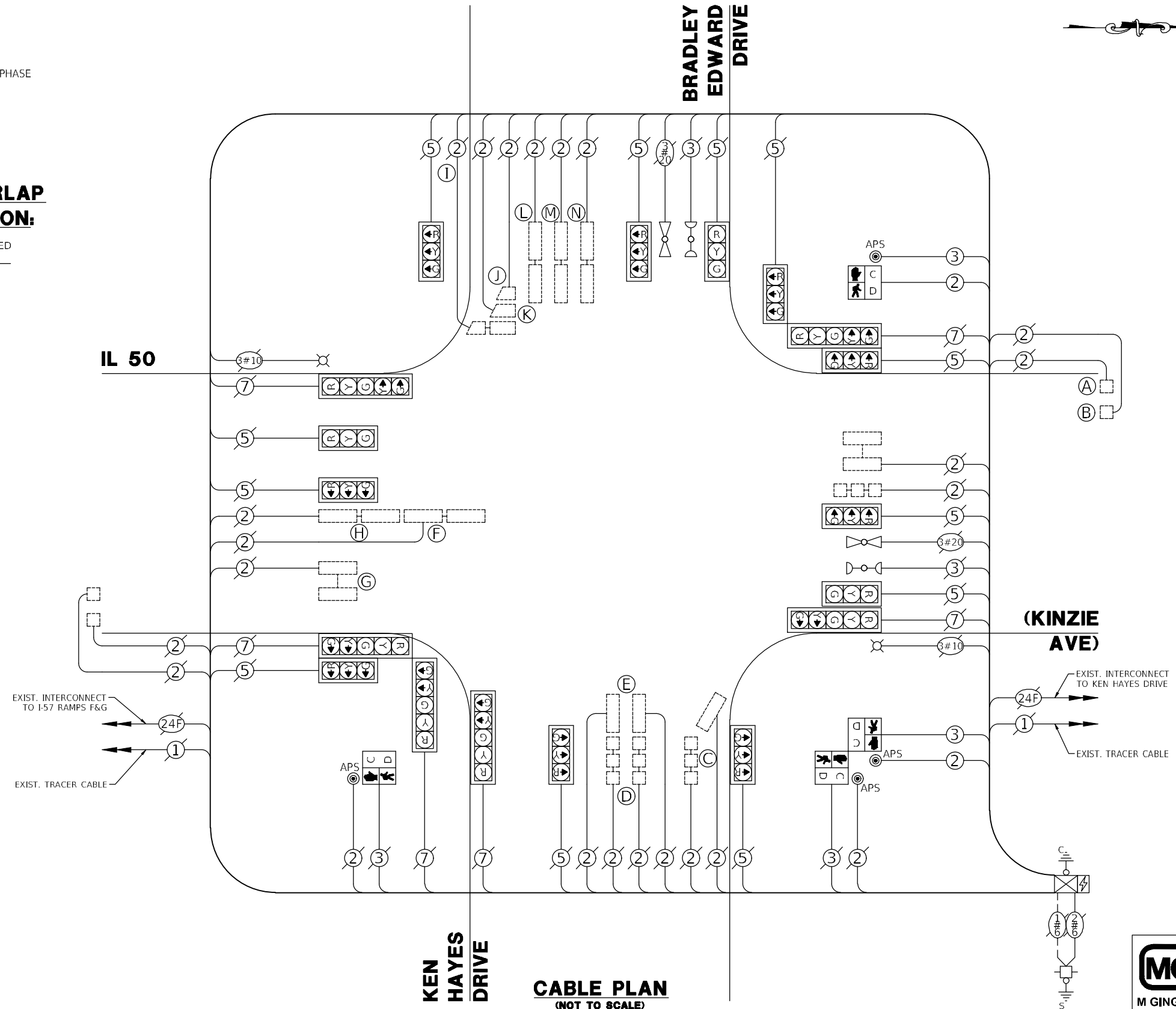
TRAFFIC SIGNAL ELECTRICAL SERVICE REQUIREMENTS

TYPE	NO. OF LAMPS	LED WATTAGE	% OPERATION	TOTAL WATTAGE
SIGNAL (RED)	18	11	50	117
(YELLOW)	18	20	5	18
(GREEN)	18	12	45	97.2
PERMISSIVE ARROW	12	10	10	12
PED. SIGNAL	2	20	100	40
CONTROLLER	1	100	100	100
UPS	1	25	100	25
VIDEO SYSTEM	-	150	100	-
BLANK-OUT SIGN	-	25	5	-
FLASHER	-	-	50	-
STREET NAME SIGN	-	120	50	-
LUMINAIRE	2	250	50	250
TOTAL =				659.2

ENERGY COSTS TO:

VILLAGE OF BRADLEY
147 S. MICHIGAN ST
BRADLEY, IL 60915

ENERGY SUPPLY: CONTACT: COM-ED
PHONE: -
COMPANY: -
ACCOUNT NUMBER: -



CABLE PLAN
(NOT TO SCALE)

REVISIONS		
DATE	BY	DESCRIPTION

MGA² CIVIL ENGINEERING SURVEYING

M GINGERICH GEREAX & ASSOCIATES
Professional Design Firm License # 184.001808
P. 815-939-4921 www.mg2a.com F. 815-939-9810
240 N. INDUSTRIAL DRIVE | BRADLEY, IL. 60915

ILLINOIS DEPARTMENT OF TRANSPORTATION
ITEP - ILLINOIS ROUTE 50 SHARED PATH
MALL ENTRANCE TO LARRY POWER ROAD
CABLE PLAN, PHASE DESIGNATION DIAGRAM, AND
EMERGENCY VEHICLE PREEMPTION SEQUENCE - IL 50
(KINZIE AVE) AT BRADLEY EDWARD DR / KEN HAYES DRIVE

GHA GEWALT HAMILTON ASSOCIATES, INC.

625 Forest Edge Drive ■ Vernon Hills, IL. 60061

SCALE: NONE DRAWN BY: ZCW
DATE: 12/09/2021 CHECKED BY: DPB

ROUTES	SECTION	COUNTY	TOTAL SHEETS	SHEET NO.
IL ROUTE 50 - F.A.P. 840 LARRY POWER ROAD	17-00098-00-BT	KANKAKEE	21	15
			CONTRACT: 87669	

SCHEDULE OF QUANTITIES

ITEM DESCRIPTION	UNITS	TOTAL QTY.
UNDERGROUND CONDUIT, GALVANIZED STEEL, 2 1/2" DIA.	FOOT	31
MAINTENANCE OF EXISTING TRAFFIC SIGNAL INSTALLATION	EACH	1
ELECTRIC CABLE IN CONDUIT, SIGNAL NO. 14 2C	FOOT	183
ELECTRIC CABLE IN CONDUIT, SIGNAL NO. 14 3C	FOOT	183
ELECTRIC CABLE IN CONDUIT, EQUIPMENT GROUNDING CONDUCTOR, NO. 6 1C	FOOT	36
TRAFFIC SIGNAL POST, GALVANIZED STEEL 14 FT.	EACH	2
CONCRETE FOUNDATION, TYPE A	FOOT	4
DRILL EXISTING HANDHOLE	EACH	1
PEDESTRIAN SIGNAL HEAD, LED, 1-FACE, BRACKET MOUNTED WITH COUNTDOWN TIMER	EACH	4
REMOVE EXISTING TRAFFIC SIGNAL EQUIPMENT	EACH	1
ACCESSIBLE PEDESTRIAN SIGNALS	EACH	4
MODIFY EXISTING CONTROLLER AND CABINET	EACH	1
RE-OPTIMIZE TRAFFIC SIGNAL SYSTEM LEVEL 1	EACH	1

REVISIONS		
DATE	BY	DESCRIPTION

MGA² CIVIL ENGINEERING SURVEYING

M GINGERICH GEREUX & ASSOCIATES
Professional Design Firm License # 184.001808
P. 815-939-4921 www.mg2a.com F. 815-939-9810
240 N. INDUSTRIAL DRIVE | BRADLEY, IL. 60915

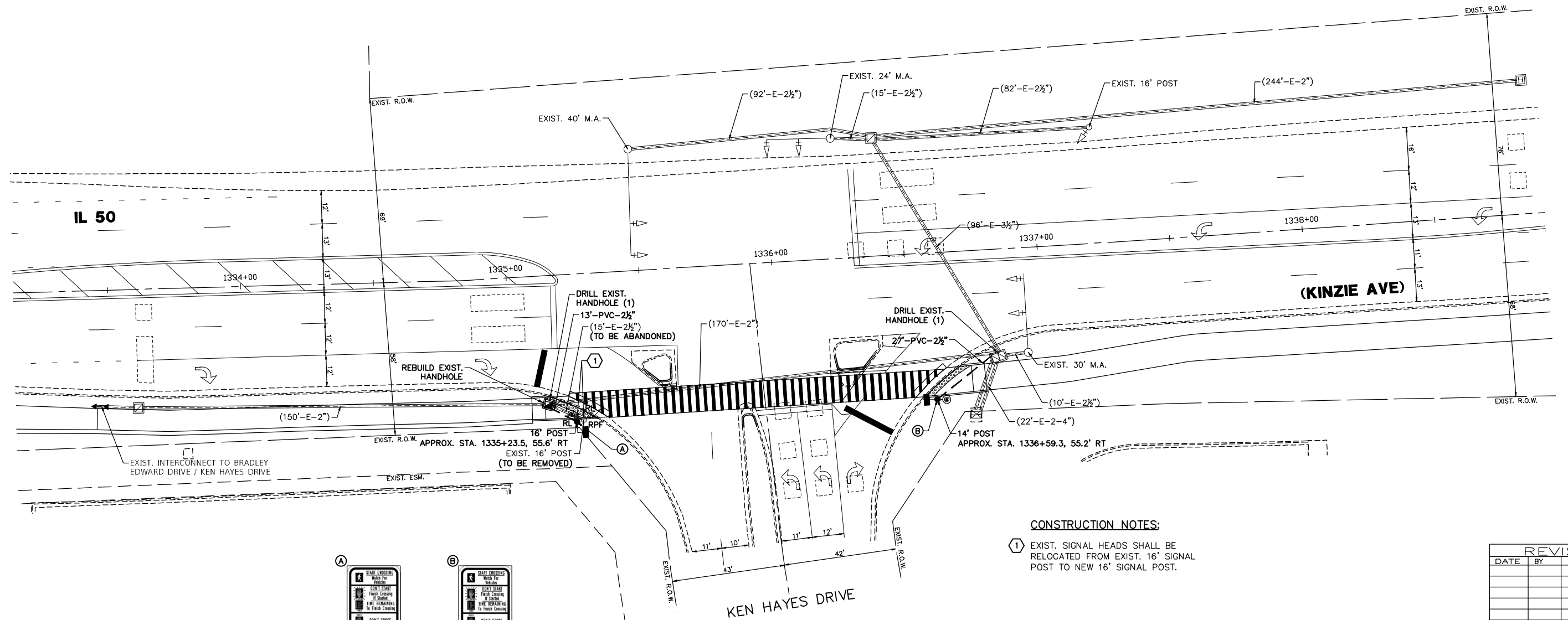
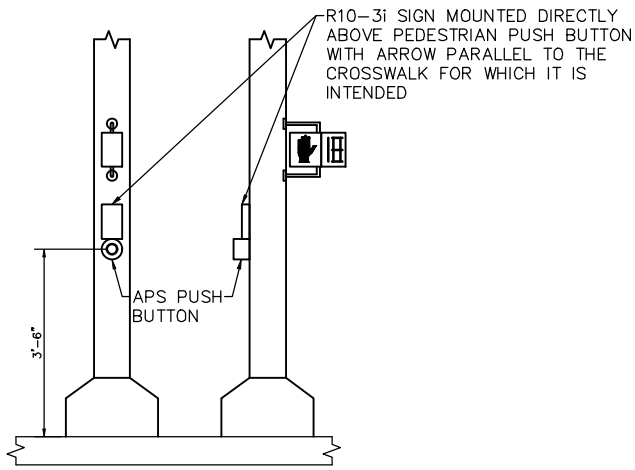
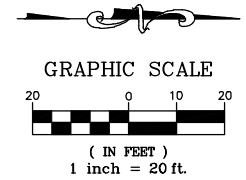
GHA GEWALT HAMILTON ASSOCIATES, INC.
625 Forest Edge Drive ■ Vernon Hills, IL. 60061

ILLINOIS DEPARTMENT OF TRANSPORTATION
ITEP – ILLINOIS ROUTE 50 SHARED PATH
MALL ENTRANCE TO LARRY POWER ROAD

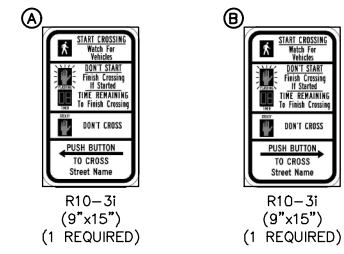
SCHEDULE OF QUANTITIES - IL 50 (KINZIE AVE)
AT BRADLEY EDWARD DRIVE / KEN HAYES DRIVE

SCALE: NONE DRAWN BY: ZCW
DATE: 12/09/2021 CHECKED BY: DPB

ROUTES	SECTION	COUNTY	TOTAL SHEETS	SHEET NO.
IL ROUTE 50 - F.A.P. 840 LARRY POWER ROAD	17-00098-00-BT	KANKAKEE	21	16
			CONTRACT: 87669	



CONSTRUCTION NOTES:
 ① EXIST. SIGNAL HEADS SHALL BE RELOCATED FROM EXIST. 16' SIGNAL POST TO NEW 16' SIGNAL POST.



REVISIONS		
DATE	BY	DESCRIPTION

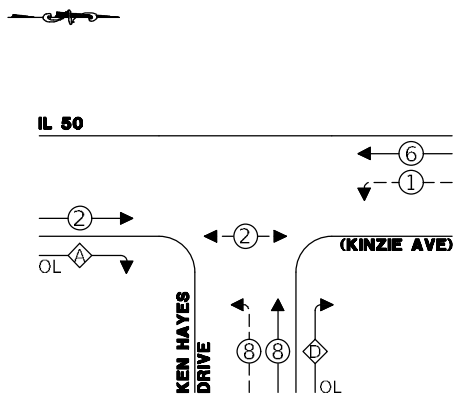
MGA² CIVIL ENGINEERING SURVEYING
M GINGERICH GEREAX & ASSOCIATES
 Professional Design Firm License # 184.001808
 P. 815-939-4921 www.mg2a.com F. 815-939-9810
 240 N. INDUSTRIAL DRIVE | BRADLEY, IL. 60915

GHA GEWALT HAMILTON ASSOCIATES, INC.
 625 Forest Edge Drive ■ Vernon Hills, IL. 60061

ILLINOIS DEPARTMENT OF TRANSPORTATION
 ITEP - ILLINOIS ROUTE 50 SHARED PATH
 MALL ENTRANCE TO LARRY POWER ROAD
 TRAFFIC SIGNAL MODIFICATION PLAN -
 IL 50 (KINZIE AVE) AT KEN HAYES DRIVE
 SCALE: 1"=20'
 DATE: 12/09/2021 DRAWN BY: ZCW
 CHECKED BY: DPB

ROUTES	SECTION	COUNTY	TOTAL SHEETS	SHEET NO.
IL ROUTE 50 - F.A.P. 840 LARRY POWER ROAD	17-00098-00-BT	KANKAKEE	21	17
			CONTRACT: 87669	

PROPOSED CONTROLLER SEQUENCE



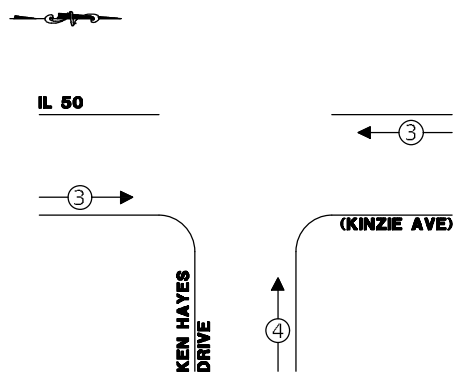
LEGEND:

- ←(*) PROTECTED PHASE
- ←(*)- PROTECTED/PERMITTED PHASE
- ←(*)→ PEDESTRIAN PHASE
- ▲(OL) OVERLAP

RIGHT TURN OVERLAP PHASE DESIGNATION:

OVERLAP LETTER	PERMISSIVE PHASE	PROTECTED PHASE
A	= 2	+ 6
D	= 8	+ 1

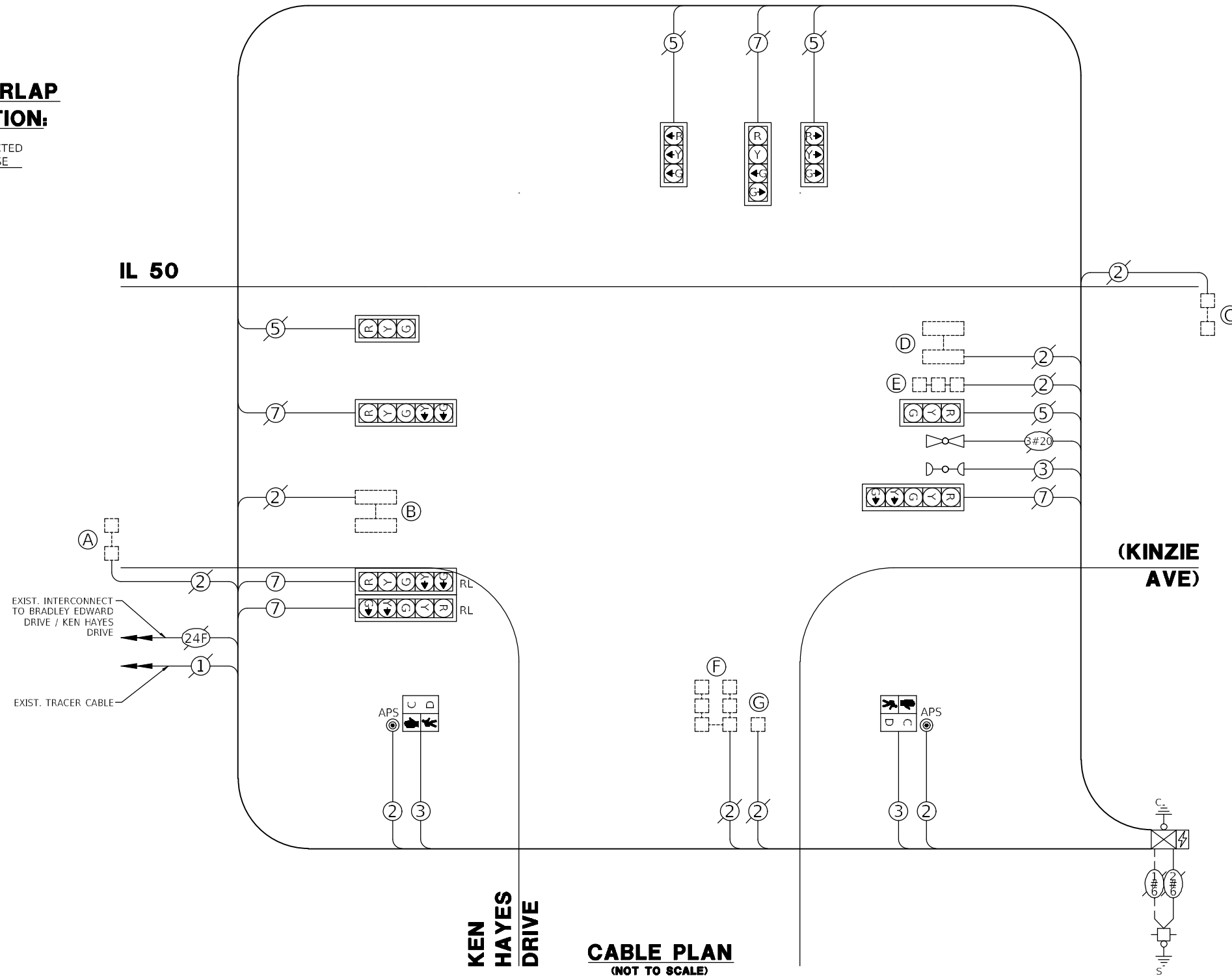
PROPOSED EMERGENCY VEHICLE PREEMPTION SEQUENCE



TRAFFIC SIGNAL ELECTRICAL SERVICE REQUIREMENTS

TYPE	NO. OF LAMPS	LED WATTAGE	% OPERATION	TOTAL WATTAGE
SIGNAL (RED)	9	11	50	49.5
(YELLOW)	9	20	5	9
(GREEN)	9	12	45	48.6
PERMISSIVE ARROW	10	10	10	10
PED. SIGNAL	2	20	100	40
CONTROLLER	1	100	100	100
UPS	1	25	100	25
VIDEO SYSTEM	-	150	100	-
BLANK-OUT SIGN	-	25	5	-
FLASHER	-	-	50	-
STREET NAME SIGN	-	120	50	-
LUMINAIRE	-	250	50	-
TOTAL =				282.1

ENERGY COSTS TO:
 VILLAGE OF BRADLEY
 147 S. MICHIGAN ST
 BRADLEY, IL 60915
 ENERGY SUPPLY: CONTACT: COM-ED
 PHONE: -
 COMPANY: -
 ACCOUNT NUMBER: -



CABLE PLAN
(NOT TO SCALE)

REVISIONS		
DATE	BY	DESCRIPTION

MGA² CIVIL ENGINEERING SURVEYING
M GINGERICH GEREAX & ASSOCIATES
 Professional Design Firm License # 184.001808
 P. 815-939-4921 www.mg2a.com F. 815-939-9810
 240 N. INDUSTRIAL DRIVE | BRADLEY, IL. 60915

GHA GEWALT HAMILTON ASSOCIATES, INC.
 625 Forest Edge Drive ■ Vernon Hills, IL. 60061

ILLINOIS DEPARTMENT OF TRANSPORTATION
 ITEP - ILLINOIS ROUTE 50 SHARED PATH
 MALL ENTRANCE TO LARRY POWER ROAD
 CABLE PLAN, PHASE DESIGNATION DIAGRAM, AND
 EMERGENCY VEHICLE PREEMPTION SEQUENCE -
 IL 50 (KINZIE AVE) AT KEN HAYES DRIVE
 SCALE: NONE DRAWN BY: ZCW
 DATE: 12/09/2021 CHECKED BY: DPB

ROUTES	SECTION	COUNTY	TOTAL SHEETS	SHEET NO.
IL ROUTE 50 - F.A.P. 840 LARRY POWER ROAD	17-00098-00-BT	KANKAKEE	21	18
			CONTRACT: 87669	

SCHEDULE OF QUANTITIES

ITEM DESCRIPTION	UNITS	TOTAL QTY.
UNDERGROUND CONDUIT, PVC, 2 1/2" DIA.	FOOT	40
MAINTENANCE OF EXISTING TRAFFIC SIGNAL INSTALLATION	EACH	1
ELECTRIC CABLE IN CONDUIT, SIGNAL NO. 14 2C	FOOT	331
ELECTRIC CABLE IN CONDUIT, SIGNAL NO. 14 3C	FOOT	331
ELECTRIC CABLE IN CONDUIT, SIGNAL NO. 14 5C	FOOT	250
ELECTRIC CABLE IN CONDUIT, EQUIPMENT GROUNDING CONDUCTOR, NO. 6 1C	FOOT	32
TRAFFIC SIGNAL POST, GALVANIZED STEEL 14 FT.	EACH	1
TRAFFIC SIGNAL POST, GALVANIZED STEEL 16 FT.	EACH	1
CONCRETE FOUNDATION, TYPE A	FOOT	8
DRILL EXISTING HANDHOLE	EACH	2
PEDESTRIAN SIGNAL HEAD, LED, 1-FACE, BRACKET MOUNTED WITH COUNTDOWN TIMER	EACH	2
REMOVE EXISTING TRAFFIC SIGNAL EQUIPMENT	EACH	1
REBUILD EXISTING HANDHOLE	EACH	1
ACCESSIBLE PEDESTRIAN SIGNALS	EACH	2
MODIFY EXISTING CONTROLLER AND CABINET	EACH	1
RE-OPTIMIZE TRAFFIC SIGNAL SYSTEM LEVEL 1	EACH	1

REVISIONS		
DATE	BY	DESCRIPTION

MGA² CIVIL ENGINEERING SURVEYING

M GINGERICH GEREAX & ASSOCIATES
Professional Design Firm License # 184.001808
P. 815-939-4921 www.mg2a.com F. 815-939-9810
240 N. INDUSTRIAL DRIVE | BRADLEY, IL. 60915

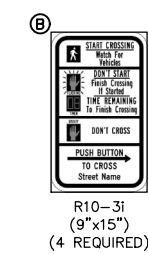
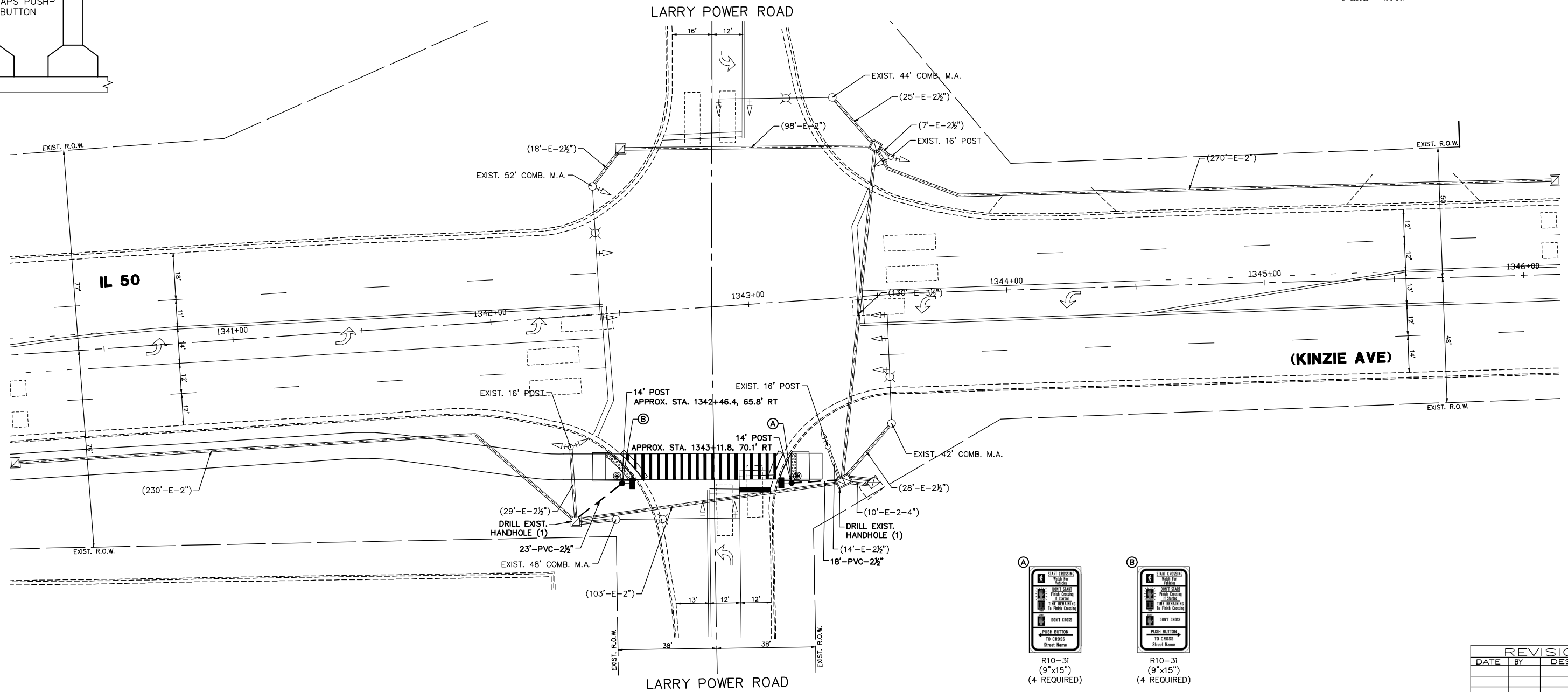
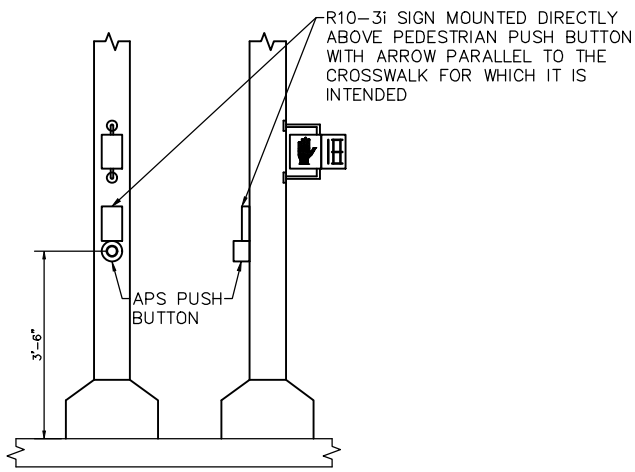
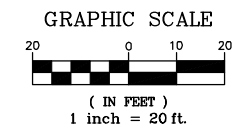
GHA GEWALT HAMILTON ASSOCIATES, INC.
625 Forest Edge Drive ■ Vernon Hills, IL. 60061

ILLINOIS DEPARTMENT OF TRANSPORTATION
ITEP - ILLINOIS ROUTE 50 SHARED PATH
MALL ENTRANCE TO LARRY POWER ROAD

SCHEDULE OF QUANTITIES -
IL 50 (KINZIE AVE) AT KEN HAYES DRIVE

SCALE: NONE DRAWN BY: ZCW
DATE: 12/09/2021 CHECKED BY: DPB

ROUTES	SECTION	COUNTY	TOTAL SHEETS	SHEET NO.
IL ROUTE 50 - F.A.P. 840 LARRY POWER ROAD	17-00098-00-BT	KANKAKEE	21	19
			CONTRACT: 87669	



REVISIONS		
DATE	BY	DESCRIPTION

MGA² CIVIL ENGINEERING SURVEYING

M GINGERICH GEREAX & ASSOCIATES
 Professional Design Firm License # 184.001808
 P. 815-939-4921 www.mg2a.com F. 815-939-9810
 240 N. INDUSTRIAL DRIVE | BRADLEY, IL. 60915

GHA GEWALT HAMILTON ASSOCIATES, INC.
 625 Forest Edge Drive ■ Vernon Hills, IL. 60061

ILLINOIS DEPARTMENT OF TRANSPORTATION
 ITEP - ILLINOIS ROUTE 50 SHARED PATH
 MALL ENTRANCE TO LARRY POWER ROAD

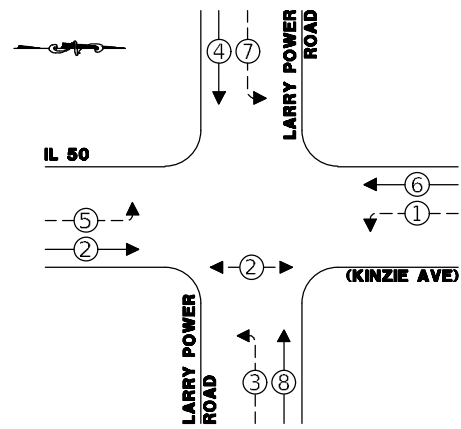
TRAFFIC SIGNAL MODIFICATION PLAN -
 IL 50 (KINZIE AVE) AT LARRY POWER ROAD

SCALE: 1"=20'
 DATE: 12/09/2021

DRAWN BY: ZCW
 CHECKED BY: DPB

ROUTES	SECTION	COUNTY	TOTAL SHEETS	SHEET NO.
IL ROUTE 50 - F.A.P. 840 LARRY POWER ROAD	17-00098-00-BT	KANKAKEE	21	20
			CONTRACT: 87669	

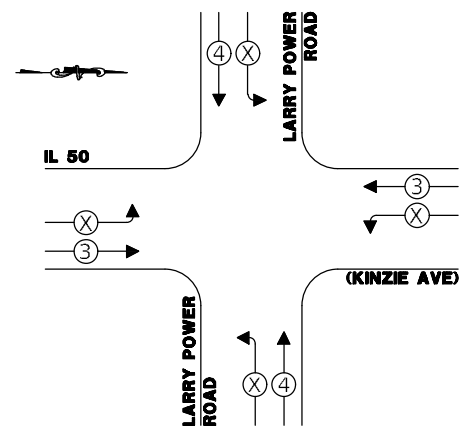
PROPOSED CONTROLLER SEQUENCE



LEGEND:

- ← ⊙ ← PROTECTED PHASE
- ← ⊙ - PROTECTED/PERMITTED PHASE
- ← ⊙ → PEDESTRIAN PHASE
- ⊙ OL OVERLAP

PROPOSED EMERGENCY VEHICLE PREEMPTION SEQUENCE



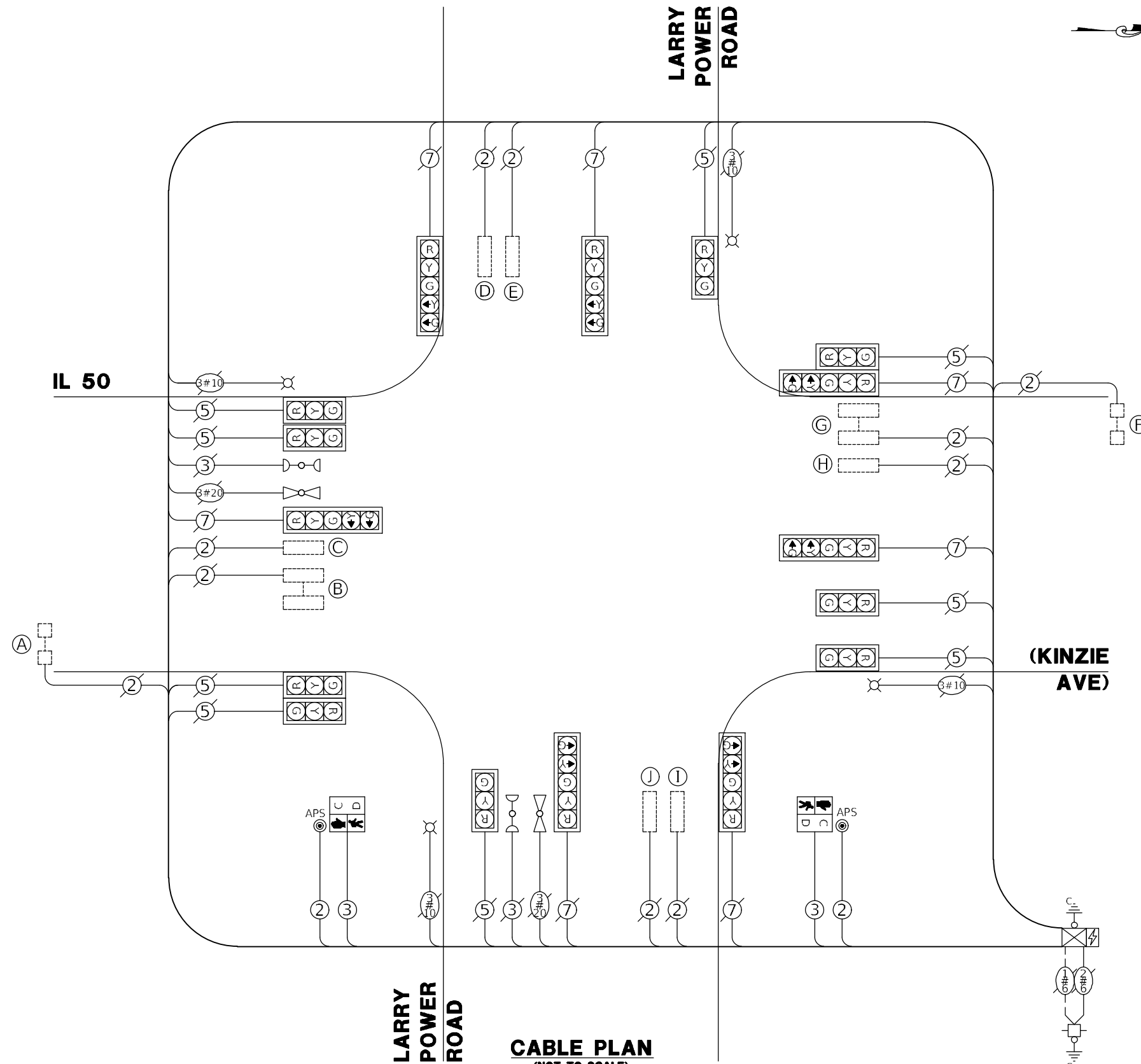
TRAFFIC SIGNAL ELECTRICAL SERVICE REQUIREMENTS

TYPE	NO. OF LAMPS	LED WATTAGE	% OPERATION	TOTAL WATTAGE
SIGNAL (RED)	16	11	50	88
(YELLOW)	16	20	5	16
(GREEN)	16	12	45	86.4
PERMISSIVE ARROW	14	10	10	14
PED. SIGNAL	2	20	100	40
CONTROLLER	1	100	100	100
UPS	1	25	100	25
VIDEO SYSTEM	-	150	100	-
BLANK-OUT SIGN	-	25	5	-
FLASHER	-	-	50	-
STREET NAME SIGN	-	120	50	-
LUMINAIRE	4	250	50	500
TOTAL =				869.4

ENERGY COSTS TO:

VILLAGE OF BRADLEY
147 S. MICHIGAN ST
BRADLEY, IL 60915

ENERGY SUPPLY: CONTACT: COM-ED
PHONE: -
COMPANY: -
ACCOUNT NUMBER: -



CABLE PLAN
(NOT TO SCALE)

REVISIONS		
DATE	BY	DESCRIPTION

MGA² CIVIL ENGINEERING SURVEYING

M GINGERICH GEREAX & ASSOCIATES
Professional Design Firm License # 184.001808
P. 815-939-4921 www.mg2a.com F. 815-939-9810
240 N. INDUSTRIAL DRIVE | BRADLEY, IL. 60915

ILLINOIS DEPARTMENT OF TRANSPORTATION
ITEP - ILLINOIS ROUTE 50 SHARED PATH
MALL ENTRANCE TO LARRY POWER ROAD
CABLE PLAN, PHASE DESIGNATION DIAGRAM, AND
EMERGENCY VEHICLE PREEMPTION SEQUENCE -
IL 50 (KINZIE AVE) AT LARRY POWER ROAD

GHA GEWALT HAMILTON ASSOCIATES, INC.

625 Forest Edge Drive ■ Vernon Hills, IL. 60061

SCALE: NONE DRAWN BY: ZCW
DATE: 12/09/2021 CHECKED BY: DPB

ROUTES	SECTION	COUNTY	TOTAL SHEETS	SHEET NO.
IL ROUTE 50 - F.A.P. 840 LARRY POWER ROAD	17-00098-00-BT	KANKAKEE	21	21
			CONTRACT: 87669	

SCHEDULE OF QUANTITIES

ITEM DESCRIPTION	UNITS	TOTAL QTY.
UNDERGROUND CONDUIT, PVC, 2 1/2" DIA.	FOOT	41
MAINTENANCE OF EXISTING TRAFFIC SIGNAL INSTALLATION	EACH	1
ELECTRIC CABLE IN CONDUIT, SIGNAL NO. 14 2C	FOOT	242
ELECTRIC CABLE IN CONDUIT, SIGNAL NO. 14 3C	FOOT	242
ELECTRIC CABLE IN CONDUIT, EQUIPMENT GROUNDING CONDUCTOR, NO. 6 1C	FOOT	54
TRAFFIC SIGNAL POST, GALVANIZED STEEL 14 FT.	EACH	2
CONCRETE FOUNDATION, TYPE A	FOOT	8
DRILL EXISTING HANDHOLE	EACH	2
PEDESTRIAN SIGNAL HEAD, LED, 1-FACE, BRACKET MOUNTED WITH COUNTDOWN TIMER	EACH	2
REMOVE EXISTING TRAFFIC SIGNAL EQUIPMENT	EACH	1
ACCESSIBLE PEDESTRIAN SIGNALS	EACH	2
MODIFY EXISTING CONTROLLER AND CABINET	EACH	1
RE-OPTIMIZE TRAFFIC SIGNAL SYSTEM LEVEL 1	EACH	1

REVISIONS		
DATE	BY	DESCRIPTION

MGA² CIVIL ENGINEERING SURVEYING

M GINGERICH GEREAX & ASSOCIATES
Professional Design Firm License # 184.001808
P. 815-939-4921 www.mg2a.com F. 815-939-9810
240 N. INDUSTRIAL DRIVE | BRADLEY, IL. 60915

ILLINOIS DEPARTMENT OF TRANSPORTATION
ITEP - ILLINOIS ROUTE 50 SHARED PATH
MALL ENTRANCE TO LARRY POWER ROAD

SCHEDULE OF QUANTITIES - LARRY POWER ROAD

GHA GEWALT HAMILTON ASSOCIATES, INC.

625 Forest Edge Drive ■ Vernon Hills, IL. 60061

SCALE: NONE DRAWN BY: ZCW
DATE: 12/09/2021 CHECKED BY: DPB