

STATE OF ILLINOIS
DEPARTMENT OF TRANSPORTATION

F.A.I. R.I.E.	SECTION	COUNTY	TOTAL SHEETS	SHEET NO.
290	2021-115-B-R	COOK	15	1
		ILLINOIS	CONTRACT NO. 62P48	

FOR INDEX OF SHEETS, SEE SHEET NO.

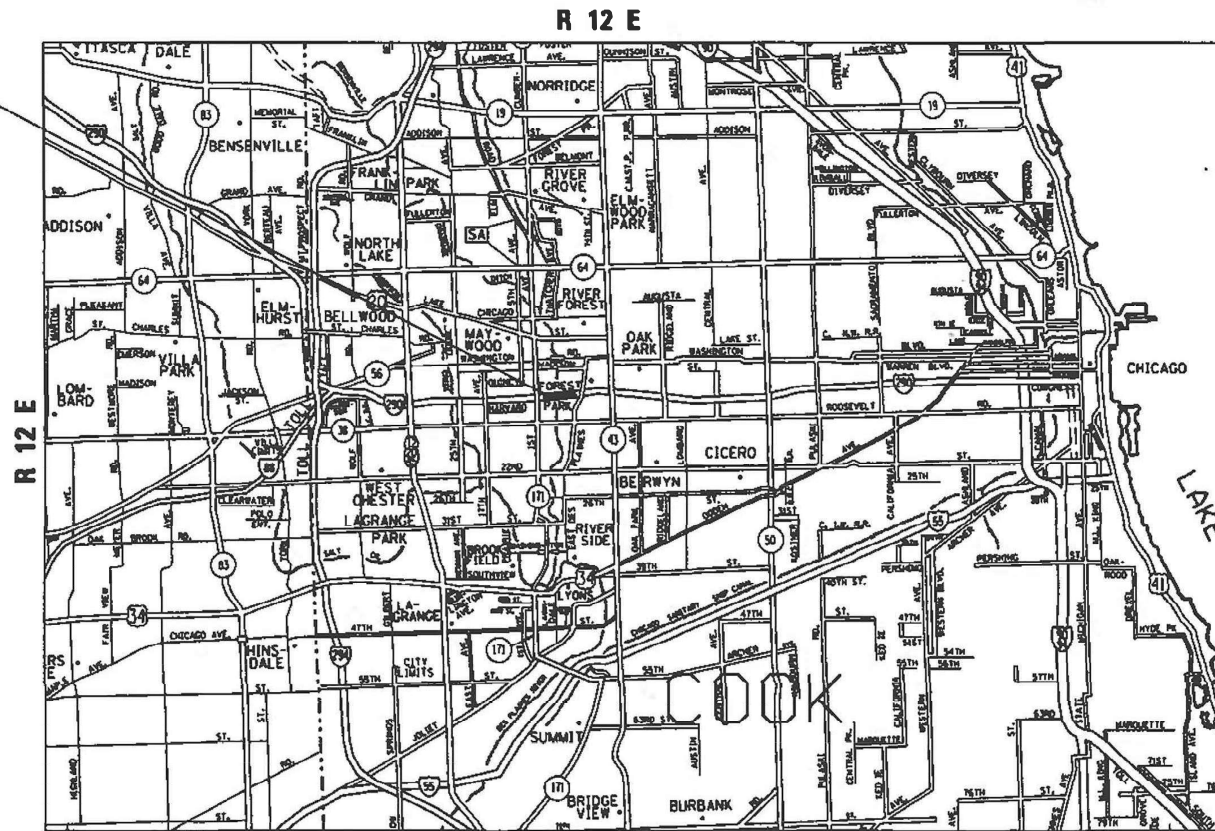
THE PROJECT IS LOCATED IN THE VILLAGE OF FOREST PARK

TRAFFIC DATA:
I-290 (EISENHOWER EXPY.)
2019 ADT = 186,200
SPEED LIMIT = 55 MPH

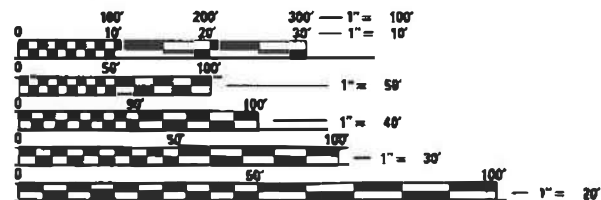
**PROPOSED
HIGHWAY PLANS**
FAI ROUTE 290 : I-290 (EISENHOWER EXPRESSWAY)
OVER DES PLAINES RIVER
SECTION: 2021-115-B-R
BRIDGE REPAIRS / BRIDGE SUBSTRUCTURE REPAIR
COOK COUNTY

C-91-240-21

PROJECT LOCATION
I-290 OVER DES PLAINES RIVER
SN: 016-0090



PROVISO TOWNSHIP



FULL SIZE PLANS HAVE BEEN PREPARED USING STANDARD ENGINEERING SCALES. REDUCED SIZED PLANS WILL NOT CONFORM TO STANDARD SCALES. IN MAKING MEASUREMENTS ON REDUCED PLANS, THE ABOVE SCALES MAY BE USED.

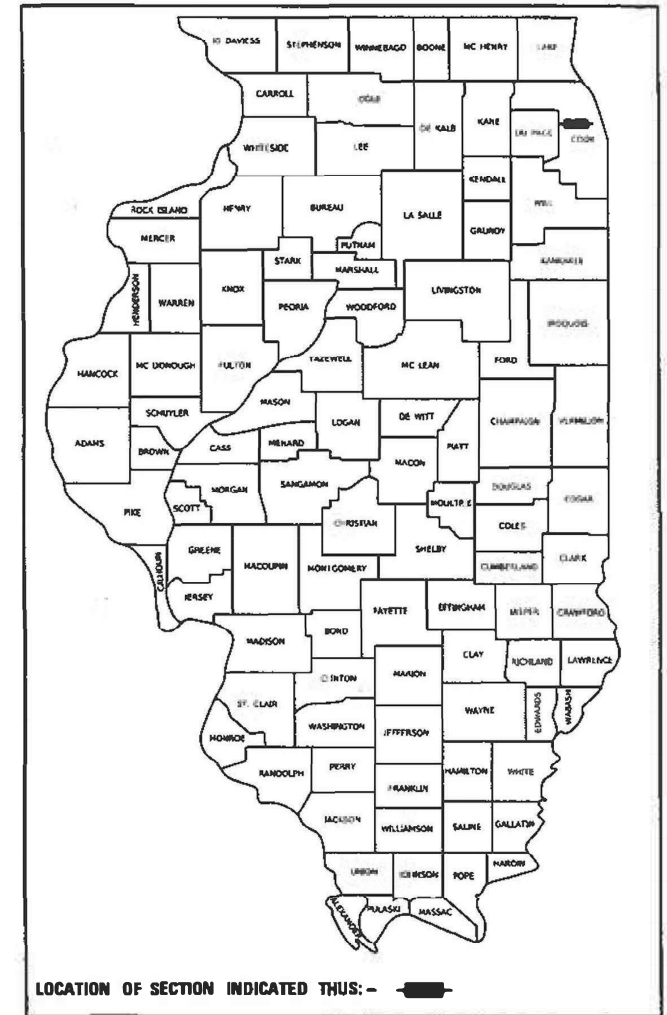
J.U.L.I.E.
JOINT UTILITY LOCATION INFORMATION FOR EXCAVATORS
1-800-892-0123
OR 811

PROJECT MANAGER: J. ALAIN MIDY (847) 221-3056

GROSS & NET LENGTH = 275 FT. = 0.052 MILE

CONTRACT NO. 62P48

D-91-201-21



LOCATION OF SECTION INDICATED THIS: -

STATE OF ILLINOIS
DEPARTMENT OF TRANSPORTATION
SUBMITTED August 4 20 21
John Ross [Signature] REGIONAL ENGINEER
October 1 20 21
[Signature] ENGINEER OF DESIGN AND ENVIRONMENT
October 21 21
Stephen M. [Signature] DIRECTOR OF HIGHWAYS PROJECT IMPLEMENTATION

PRINTED BY THE AUTHORITY
OF THE STATE OF ILLINOIS

INDEX OF SHEETS

SHEET NO.	DESCRIPTION
1	COVER SHEET
2	INDEX OF SHEETS, STANDARDS, AND GENERAL NOTES
3	SUMMARY OF QUANTITIES
4	MIXTURE REQUIREMENTS
5-12	SUBSTRUCTURE REPAIR SHEETS (SN 016-0090)
13	I-290 EISENHOWER EXPRESSWAY PATCHING
14	TRAFFIC CONTROL DETAILS FOR FREEWAY SINGLE & MULTI-LANE WEAVE (TC-09)
15	SHOULDER CLOSURES AND PARTIAL RAMP CLOSURES (TC-17)

STANDARD NO.	DESCRIPTION
000001-08	STANDARD SYMBOLS, ABBREVIATIONS AND PATTERNS
701400-11	APPROACH TO LANE CLOSURE, FREEWAY/EXPRESSWAY
701401-13	LANE CLOSURE, FREEWAY / EXPRESSWAY
701402-12	LANE CLOSURE, FREEWAY / EXPRESSWAY, WITH BARRIER
701406-13	LANE CLOSURE, FREEWAY / EXPRESSWAY, DAY OPERATIONS ONLY
701901-08	TRAFFIC CONTROL DEVICES

GENERAL NOTES

- BEFORE STARTING ANY EXCAVATION, THE CONTRACTOR SHALL CALL "JULIE" AT 800-892-0123 OR 811 FOR FIELD LOCATIONS OF BURIED ELECTRIC, TELEPHONE AND GAS FACILITIES. (48 HOUR NOTIFICATION IS REQUIRED).
- THE CONTRACTOR SHALL COORDINATE CONSTRUCTION ACTIVITIES WITH UTILITY COMPANIES AND THE VILLAGE OF FOREST PARK.
- THE CONTRACTOR WILL NOT BE ALLOWED TO SET UP A YARD OR FIELD OFFICE ON STATE PROPERTY WITHOUT WRITTEN PERMISSION FROM THE DEPARTMENT.
- IT SHALL BE THE CONTRACTOR'S RESPONSIBILITY TO VERIFY ALL DIMENSIONS AND CONDITIONS EXISTING IN THE FIELD PRIOR TO CONSTRUCTION AND ORDERING OF MATERIALS.
- THE CONTRACTOR SHALL BE REQUIRED TO PROVIDE ACCESS TO ABUTTING PROPERTY AT ALL TIMES DURING THE CONSTRUCTION OF THIS PROJECT.
- THE CONTRACTOR SHALL CONTACT THE DISTRICT ONE TRAFFIC CONTROL SUPERVISOR AT (847)705-4151 (72 HOURS IN ADVANCE OF BEGINNING WORK).
- THESE PLANS HAVE BEEN PREPARED FROM NOTES RECEIVED FROM THE BUREAU OF MAINTENANCE BRIDGE INSPECTORS.
- DO NOT SCALE PLANS FOR CONSTRUCTION DIMENSIONS.
- PLAN DIMENSIONS AND DETAILS RELATIVE TO EXISTING PLANS ARE SUBJECT TO NOMINAL CONSTRUCTION VARIATIONS. THE CONTRACTOR SHALL FIELD VERIFY EXISTING DIMENSIONS AND DETAILS AFFECTING NEW CONSTRUCTION AND MAKE NECESSARY APPROVED ADJUSTMENTS PRIOR TO CONSTRUCTION AND MAKE NECESSARY APPROVED ADJUSTMENTS PRIOR TO CONSTRUCTION OR ORDERING OF MATERIALS. SUCH VARIATIONS SHALL NOT BE CAUSE FOR ADDITIONAL COMPENSATION FOR A CHANGE IN SCOPE OF THE WORK, HOWEVER THE CONTRACTOR WILL BE PAID FOR THE QUANTITY ACTUALLY FURNISHED BASED AT THE UNIT PRICE BID FOR THE WORK.
- THE CONTRACTOR SHALL REQUEST AND GAIN THE APPROVAL FROM THE ILLINOIS DEPARTMENT OF TRANSPORTATION'S EXPRESSWAY TRAFFIC OPERATIONS ENGINEER AT WWW.IDOTLCS.COM TWENTY FOUR (24) HOURS IN ADVANCE OF ALL DAILY LANE, RAMP AND SHOULDER CLOSURES. THIS ADVANCE NOTIFICATION IS CALCULATED BASED ON WORKWEEK OF MONDAY THROUGH FRIDAY AND SHALL NOT INCLUDE WEEKENDS OR HOLIDAYS.

MODEL: Default
 FILE NAME: p:\planning\dot\illinois.gov\pww\dot\Documents\DOT\Office\District\1\Projects\ID120121\CAD\Batal\Design\0120121-ent-gencate.dgn

<table border="1"> <tr> <td>USER NAME = hassann</td> <td>DESIGNED -</td> <td>REVISED -</td> </tr> <tr> <td></td> <td>DRAWN -</td> <td>REVISED -</td> </tr> <tr> <td>PLOT SCALE = 100.0000' / in.</td> <td>CHECKED -</td> <td>REVISED -</td> </tr> <tr> <td>PLOT DATE = 8/11/2021</td> <td>DATE -</td> <td>REVISED -</td> </tr> </table>	USER NAME = hassann	DESIGNED -	REVISED -		DRAWN -	REVISED -	PLOT SCALE = 100.0000' / in.	CHECKED -	REVISED -	PLOT DATE = 8/11/2021	DATE -	REVISED -	STATE OF ILLINOIS DEPARTMENT OF TRANSPORTATION	I-290 EISENHOWER EXPWY /OVER DES PLAINES RIVER (SN 016-0090) INDEX OF SHEETS, STANDARDS, & GENERAL NOTES	<table border="1"> <tr> <td>F.A.I RTE. 290</td> <td>SECTION 2021-115-B-R</td> <td>COUNTY COOK</td> <td>TOTAL SHEETS 15</td> <td>SHEET NO. 2</td> </tr> </table>	F.A.I RTE. 290	SECTION 2021-115-B-R	COUNTY COOK	TOTAL SHEETS 15	SHEET NO. 2	<table border="1"> <tr> <td>SCALE:</td> <td>SHEET</td> <td>OF</td> <td>SHEETS</td> <td>STA.</td> <td>TO STA.</td> </tr> </table>	SCALE:	SHEET	OF	SHEETS	STA.	TO STA.	<table border="1"> <tr> <td colspan="2">CONTRACT NO. 62P48</td> </tr> <tr> <td colspan="2">ILLINOIS FED. AID PROJECT</td> </tr> </table>	CONTRACT NO. 62P48		ILLINOIS FED. AID PROJECT	
USER NAME = hassann	DESIGNED -	REVISED -																														
	DRAWN -	REVISED -																														
PLOT SCALE = 100.0000' / in.	CHECKED -	REVISED -																														
PLOT DATE = 8/11/2021	DATE -	REVISED -																														
F.A.I RTE. 290	SECTION 2021-115-B-R	COUNTY COOK	TOTAL SHEETS 15	SHEET NO. 2																												
SCALE:	SHEET	OF	SHEETS	STA.	TO STA.																											
CONTRACT NO. 62P48																																
ILLINOIS FED. AID PROJECT																																

SUMMARY OF QUANTITIES			100% STATE TOTAL QUANTITIES	CONSTRUCTION TYPE CODE					SUMMARY OF QUANTITIES			TOTAL QUANTITIES	CONSTRUCTION TYPE CODE				
CODE NO	ITEM	UNIT		URBAN 0013						CODE NO	ITEM		UNIT				
40600290	BITUMINOUS MATERIALS (TACK COAT)	POUND	40	40													
40604062	HOT-MIX ASPHALT SURFACE COURSE, IL-9.5, MIX "D", N70	TON	7.5	7.5													
44201821	CLASS D PATCHES, TYPE IV, 14 INCH	SO YD	64	64													
67000400	ENGINEER'S FIELD OFFICE, TYPE A	CAL MO	12	12													
67100100	MOBILIZATION	LSUM	1	1													
70200100	NIGHTTIME WORK ZONE LIGHTING	LSUM	1	1													
X7011015	TRAFFIC CONTROL AND PROTECTION (EXPRESSWAYS)	LSUM	1	1													
X4400100	PORTLAND CEMENT CONCRETE SURFACE REMOVAL (VARIABLE DEPTH)	SO YD	88	88													
Z0012754	STRUCTURAL REPAIR OF CONCRETE (DEPTH EQUAL TO OR LESS THAN 5 INCHES)	SO FT	797	797													
Z0073200	TEMPORARY SHORING AND CRIBBING	EACH	34	34													

FILE NAME =	USER NAME = ledznorm	DESIGNED -	REVISED -	STATE OF ILLINOIS DEPARTMENT OF TRANSPORTATION	I-290 EISENHOWER EXPWY /OVER DES PLAINES RIVER (SN 016-0090) SUMMARY OF QUANTITIES	F.A.I. RTE.	SECTION	COUNTY	TOTAL SHEETS	SHEET NO.
pw\N\dot-pw\benrey.com\PW\DOT\Documents\DOT_Offices\District\Projects\DI\2012\NCAD\Design\DI\2012-SH-gen	DRAWN -	REVISED -	290			2021-115-B-R	COOK	15	3	
PLOT SCALE = 100,0000' / 1in	CHECKED -	REVISED -	CONTRACT NO. 62P48							
PLOT DATE = 8/13/2021	DATE -	REVISED -	SCALE:			SHEET NO.	OF SHEETS	STA.	TO STA.	FED. ROAD DIST. NO. 1 ILLINOIS FED. AID PROJECT

MIXTURE REQUIREMENTS		QUALITY MANAGEMENT PROGRAM (QMP)
MIXTURE USES	VOIDS @ Ndes	
PAVEMENT RESURFACING		
HOT-MIX ASPHALT SURFACE COURSE, MIX "D", IL-9.5, N70, 1 ½"	4% AT 70 GYR.	QC/QA
PATCHING		
HOT-MIX ASPHALT SURFACE COURSE, MIX "D", IL-9.5, N70, 2"	4% AT 70 GYR.	QC/QA
CLASS D PATCHES (HMA BINDER, IL-19.0), 12"	4% AT 70 GYR.	QC/QA
QMP Designation: Quality Control/Quality Assurance (QC/QA); Quality Control for Performance (QCP)		

NOTE 1: THE UNIT WEIGHT USED TO CALCULATE ALL HMA SURFACE MIXTURE QUANTITIES IS 112 LBS/SQYD/IN

NOTE 2: THE "AC TYPE" FOR POLYMERIZED HMA MIXES SHALL BE "SBS/SBR PG 76-22" AND FOR NON-POLYMERIZED HMA THE "AC TYPE" SHALL BE "PG 64-22" UNLESS MODIFIED BY DISTRICT ONE SPECIAL PROVISIONS. FOR USE OF RECYCLED MATERIALS SEE SPECIAL PROVISIONS.

QUALITY MANAGEMENT PROGRAM (QMP) IDENTIFIES THE PARTICULAR QUALITY CONTROL SPECIFICATION THAT APPLIES TO THE HMA MIXTURE

MODEL: Default
 FILE NAME: p:\u0030\m0000.dwg
 PROJECT: I-290 EISENHOWER EXPWAY / OVER DES PLAINES RIVER (SN 016-0090)
 PROJECT ID: 2021-115-B-R
 COUNTY: COOK
 SHEET: 15 OF 15
 DATE: 8/11/2021

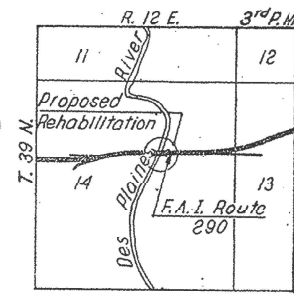
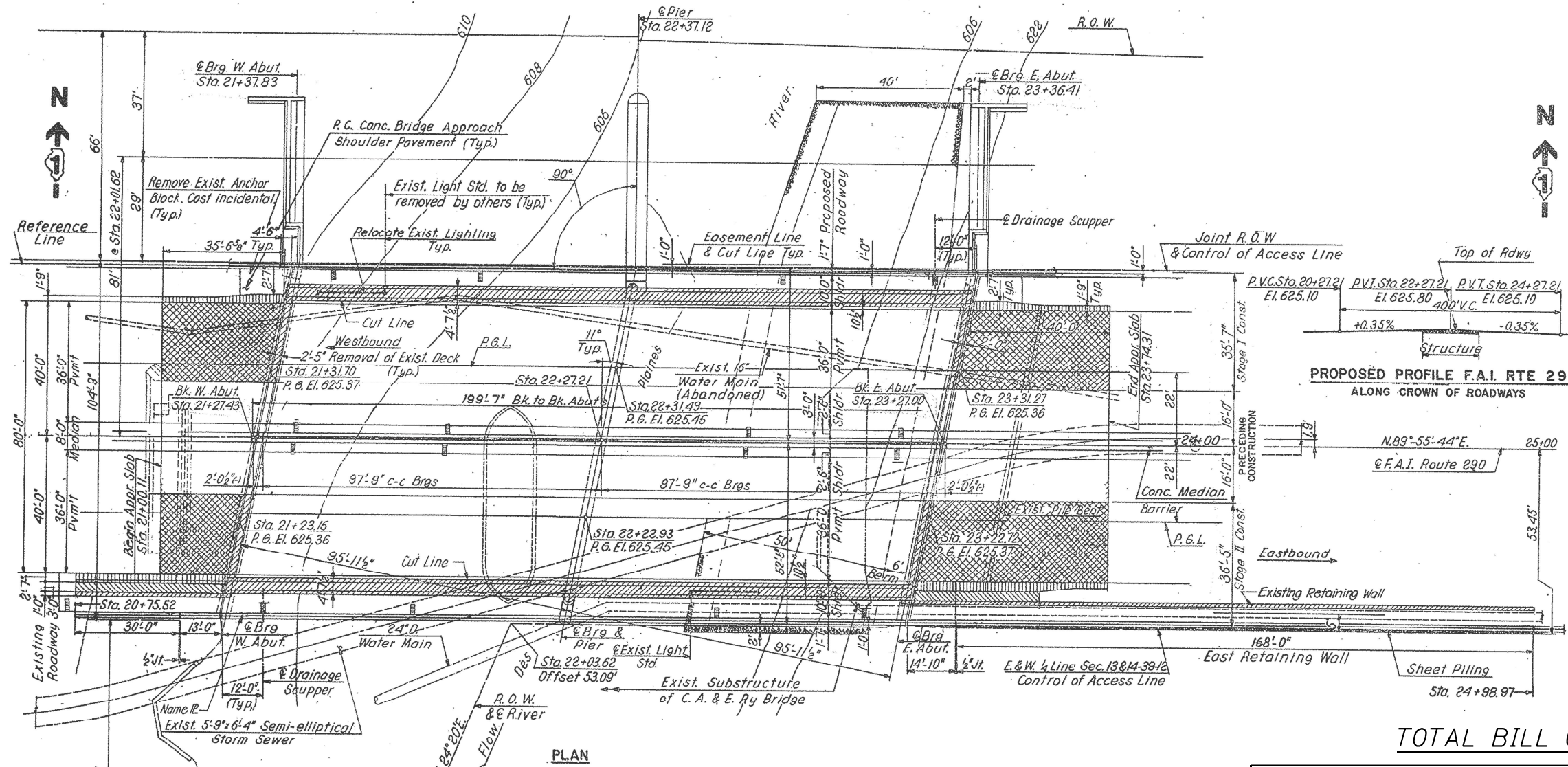
USER NAME = hassan	DESIGNED -	REVISED -
	DRAWN -	REVISED -
PLOT SCALE = 100,0000 ' / in.	CHECKED -	REVISED -
PLOT DATE = 8/11/2021	DATE -	REVISED -

**STATE OF ILLINOIS
DEPARTMENT OF TRANSPORTATION**

**I-290 EISENHOWER EXPWAY / OVER DES PLAINES RIVER (SN 016-0090)
MIXTURE REQUIREMENTS**

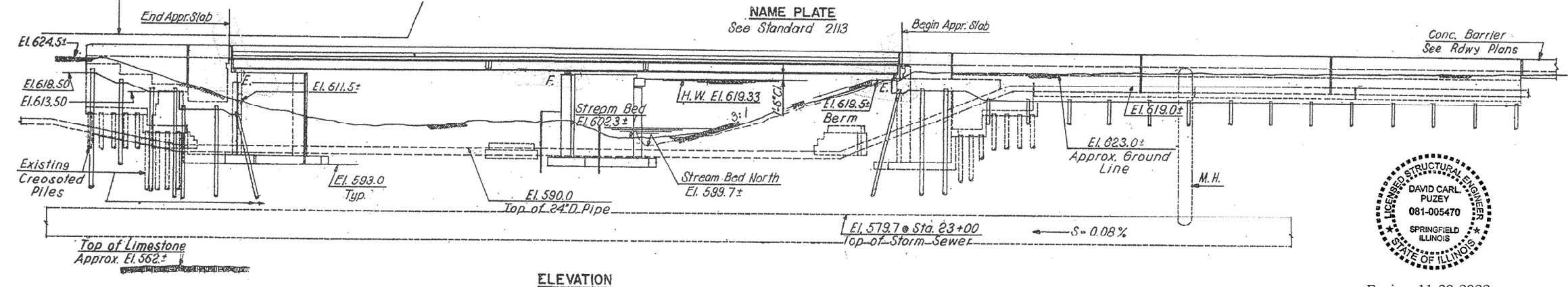
SCALE: SHEET OF SHEETS STA. TO STA.

F.A.J. RTE.	SECTION	COUNTY	TOTAL SHEETS	SHEET NO.
290	2021-115-B-R	COOK	15	4
ILLINOIS FED. AID PROJECT			CONTRACT NO. 62P48	



TOTAL BILL OF MATERIAL

ITEM	UNIT	QUANTITY
STRUCTURAL REPAIR OF CONCRETE < 5 INCHES	SQ FT	797
TEMP. SHORING & CRIBBING	EACH	34



Expires 11-30-2022

David Carl Puzey

USER NAME = hassan	DESIGNED -	REVISED -
PLOT SCALE = 100,000' / in.	DRAWN -	REVISED -
PLOT DATE = 8/11/2021	CHECKED -	REVISED -
	DATE -	REVISED -

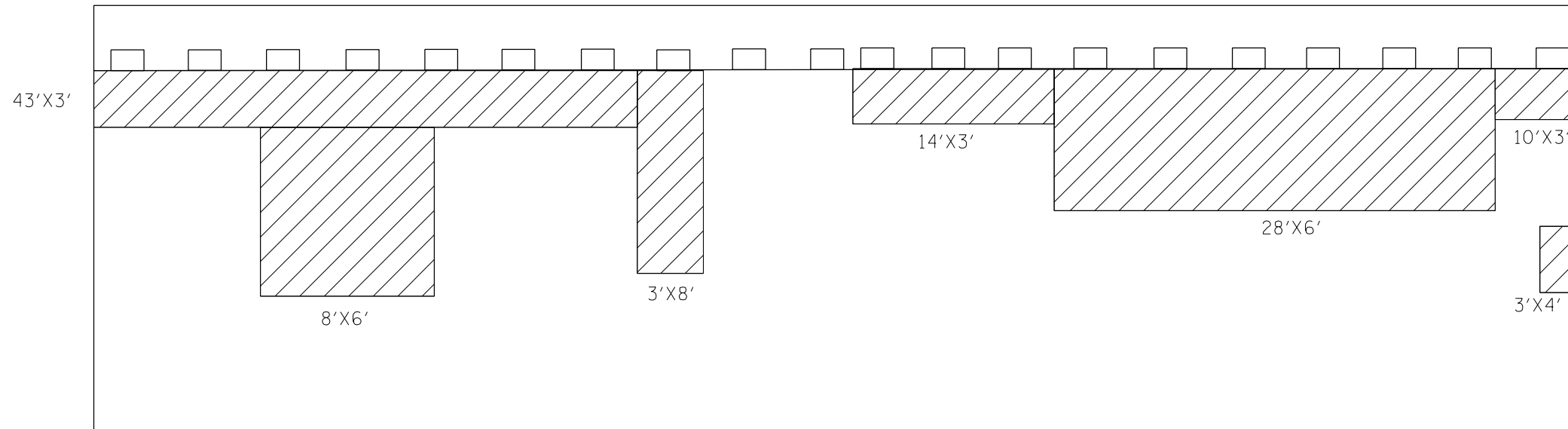
**STATE OF ILLINOIS
DEPARTMENT OF TRANSPORTATION**

**I-290 EISENHOWER EXPRESSWAY
OVER DES PLAINES RIVER**

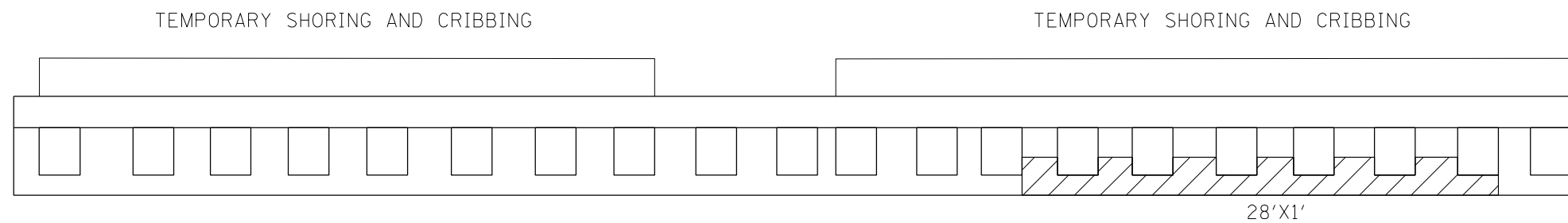
SCALE: SHEET OF SHEETS STA. TO STA.

F.A.I. RTE. 290	SECTION 2021-115-B-R	COUNTY COOK	TOTAL SHEETS 15	SHEET NO. 5
CONTRACT NO. 62P48				ILLINOIS FED. AID PROJECT

MODEL Path: \\p11011\proj\2021\115\B-R\I-290 EISENHOWER EXPRESSWAY OVER DES PLAINES RIVER\DWG\2021-115-B-R-I-290 EISENHOWER EXPRESSWAY OVER DES PLAINES RIVER.DWG
FILE NAME: 2021115B-R-I-290 EISENHOWER EXPRESSWAY OVER DES PLAINES RIVER.DWG



WEST ABUTMENT ELEVATION



PLAN WEST ABUTMENT

WEST ABUTMENT BILL OF MATERIAL

ITEM	UNIT	QUANTITY
STRUCTURAL REPAIR OF CONCRETE ≤ 5 INCHES	SQ FT	481
TEMP. SHORING & CRIBBING	EACH	18

BEAM REACTION TABLE				
	Bm. 1		Bm. 20	
	Abut.	Pier	Abut.	Pier
R DL (K)	44.0	141.0	46.6	149.8
R LL (K)	31.0	51.3	37.5	59.9
R IMP (K)	7.0	8.0	8.4	9.3
R (TOTAL) (K)	82.0	200.3	92.5	219.0

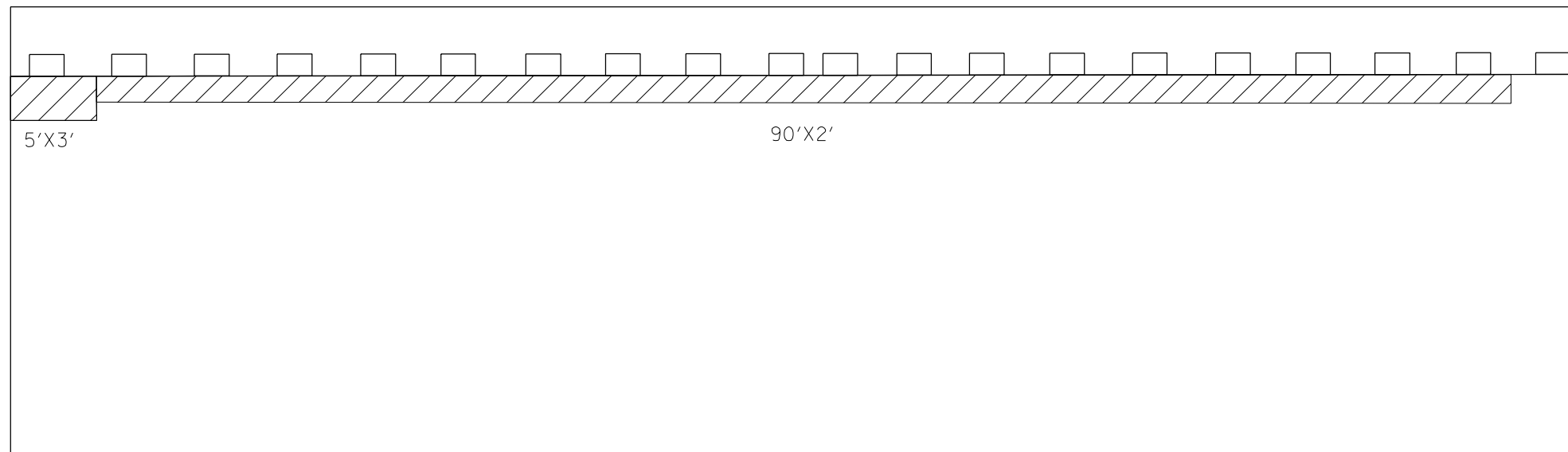
MODEL: Default
 FILE NAME: p:\haman\room.dwg
 PROJECT: I-290 Eisenh Expressway Over Des Plaines River (WEST ABUTMENT)
 PROJECT ID: 2021115-B-R
 COUNTY: COOK
 SHEETS: 15
 SHEET NO.: 6
 CONTRACT NO.: 62P48
 DATE: 8/11/2021

USER NAME = hassan	DESIGNED -	REVISED -
PLOT SCALE = 100,0000' / in.	DRAWN -	REVISED -
PLOT DATE = 8/11/2021	CHECKED -	REVISED -
	DATE -	REVISED -

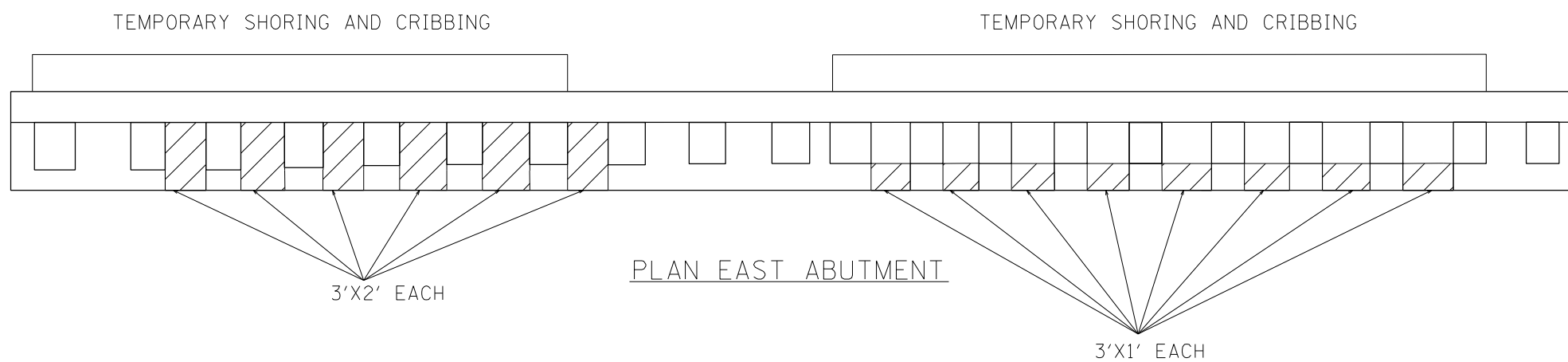
STATE OF ILLINOIS
DEPARTMENT OF TRANSPORTATION

I-290 Eisenhower Expressway Over Des Plaines River (WEST ABUTMENT)	
SCALE:	SHEET 1 OF 3 SHEETS STA. TO STA.

F.A.J. RTE.	SECTION	COUNTY	TOTAL SHEETS	SHEET NO.
290	2021-115-B-R	COOK	15	6
CONTRACT NO. 62P48				
ILLINOIS FED. AID PROJECT				



EAST ABUTMENT ELEVATION



PLAN EAST ABUTMENT

EAST ABUTMENT BILL OF MATERIAL

ITEM	UNIT	QUANTITY
STRUCTURAL REPAIR OF CONCRETE ≤ 5 INCHES	SQ FT	255
TEMP. SHORING & CRIBBING	EACH	16

MODEL: Default
 FILE NAME: p:\planroom\dot.illinois.gov\PIWDOT\Documents\DOT_Offices\District 1\Projects\2012\CADD\Drawings\Design\120121-21h-abut-01.dwg

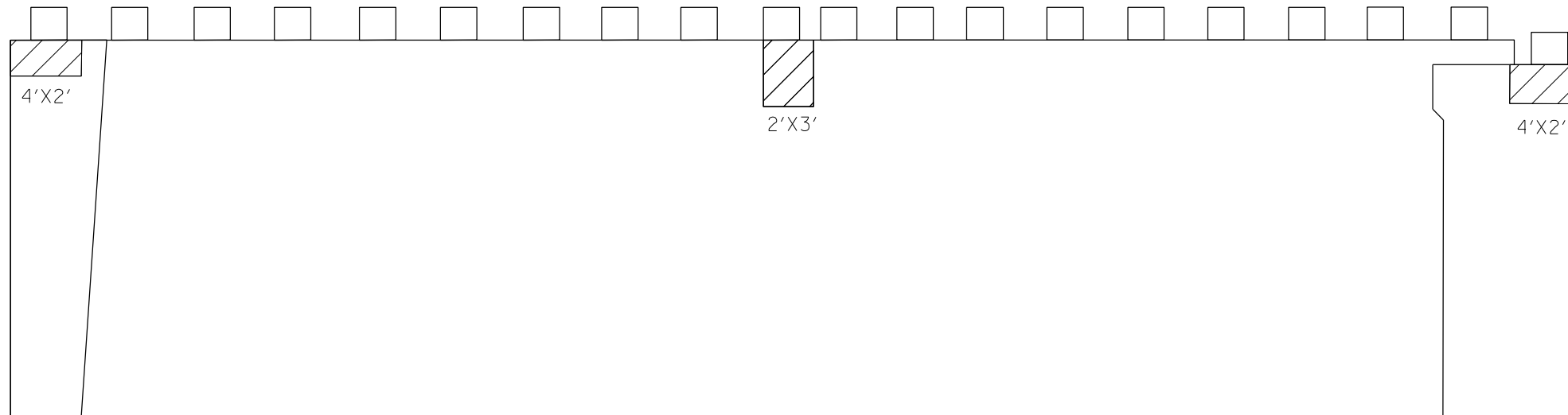
USER NAME = hassan	DESIGNED -	REVISED -
PLOT SCALE = 100,0000' / in.	DRAWN -	REVISED -
PLOT DATE = 8/11/2021	CHECKED -	REVISED -
	DATE -	REVISED -

**STATE OF ILLINOIS
DEPARTMENT OF TRANSPORTATION**

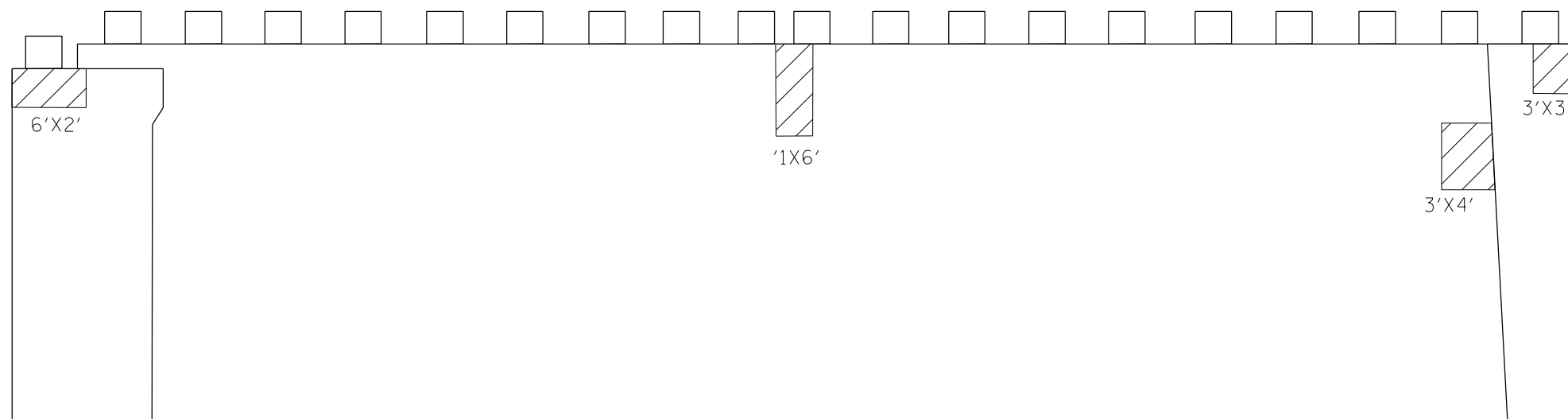
I-290 Eisenhower Expressway
Over Des Plaines River (EAST ABUTMENT)

SCALE: SHEET 2 OF 3 SHEETS STA. TO STA.

F.A.J. RTE.	SECTION	COUNTY	TOTAL SHEETS	SHEET NO.
290	2021-115-B-R	COOK	15	7
ILLINOIS FED. AID PROJECT			CONTRACT NO. 62P48	



PIER EAST FACE ELEVATION



PIER WEST FACE ELEVATION

PIER 1 EAST FACE BILL OF MATERIAL

	ITEM	UNIT	QUANTITY
	STRUCTURAL REPAIR OF CONCRETE ≤ 5 INCHES	SQ FT	61

MODEL: Default
 FILE NAME: p:\u0000\m00000.dwg
 PROJECT: I-290 Eisenh Expressway Over Des Plaines River (PIER)
 USER: hassan
 DATE: 8/11/2021

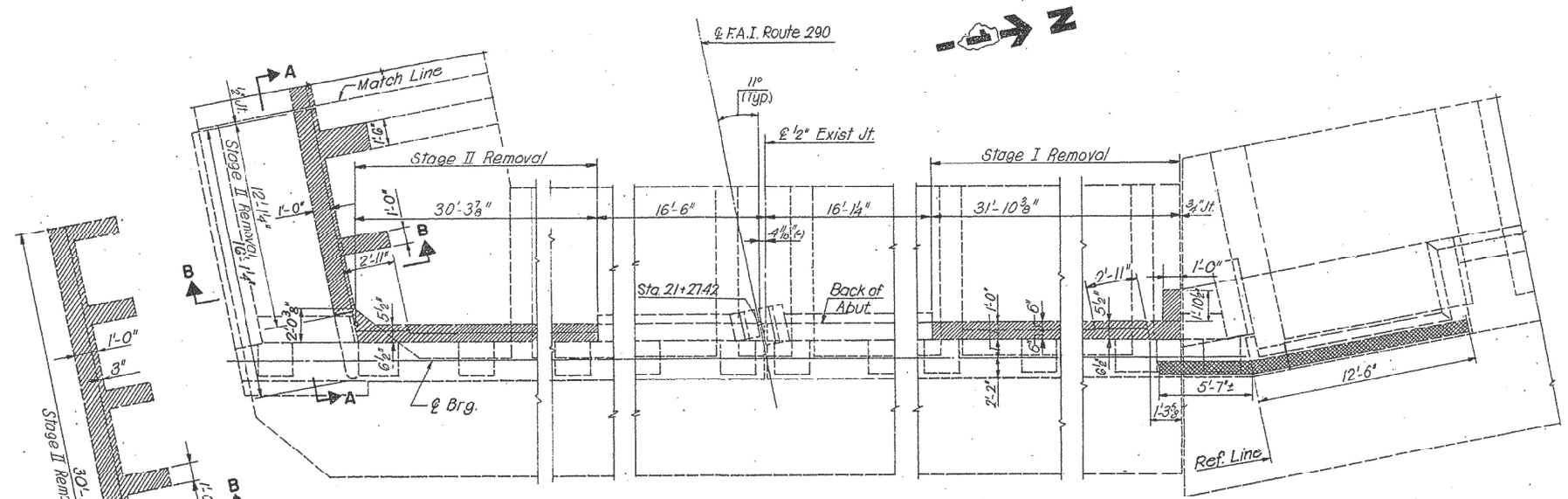
USER NAME = hassan	DESIGNED -	REVISED -
PLOT SCALE = 100,0000' / in.	DRAWN -	REVISED -
PLOT DATE = 8/11/2021	CHECKED -	REVISED -
	DATE -	REVISED -

**STATE OF ILLINOIS
DEPARTMENT OF TRANSPORTATION**

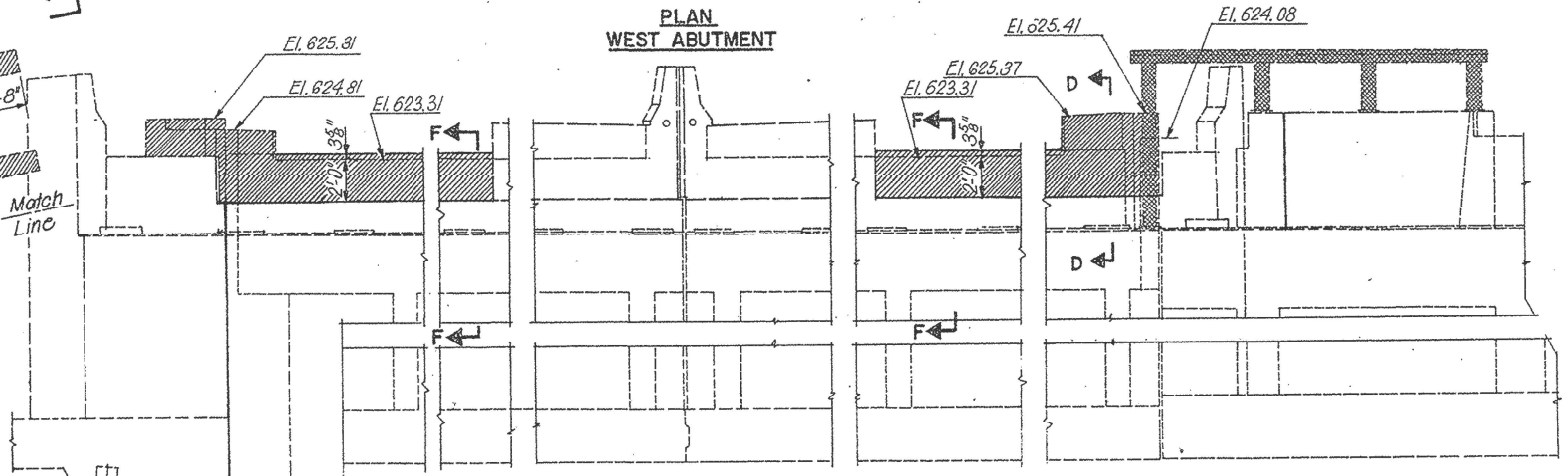
I-290 Eisenhower Expressway
Over Des Plaines River (PIER)

SCALE: SHEET 3 OF 3 SHEETS STA. TO STA.

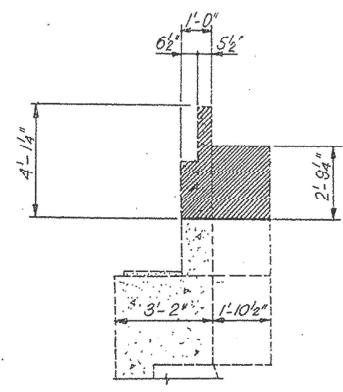
F.A.J. RTE.	SECTION	COUNTY	TOTAL SHEETS	SHEET NO.
290	2021-115-B-R	COOK	15	8
CONTRACT NO. 62P48			ILLINOIS FED. AID PROJECT	



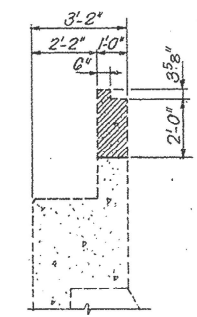
PLAN WEST ABUTMENT



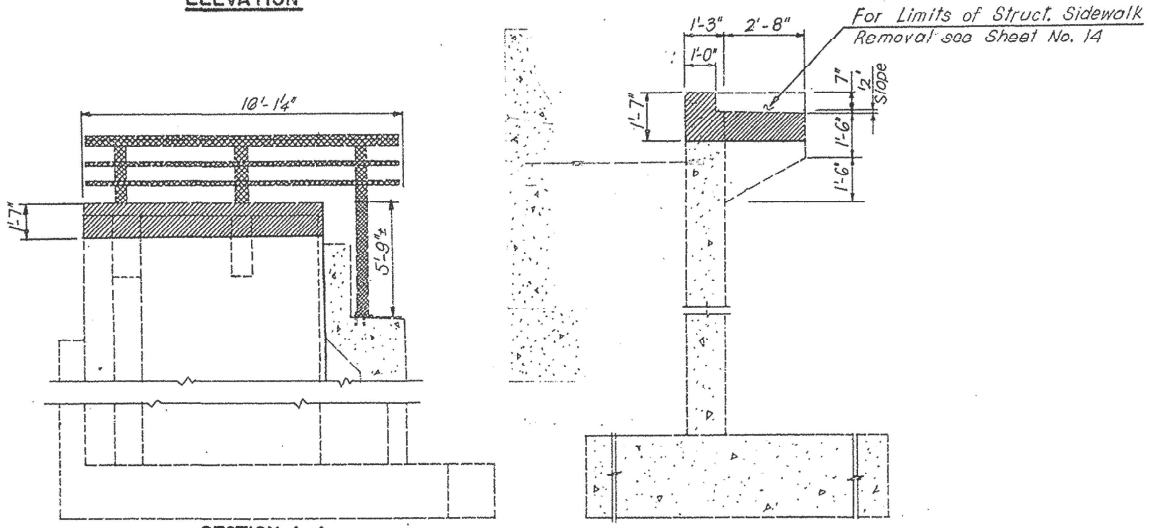
ELEVATION



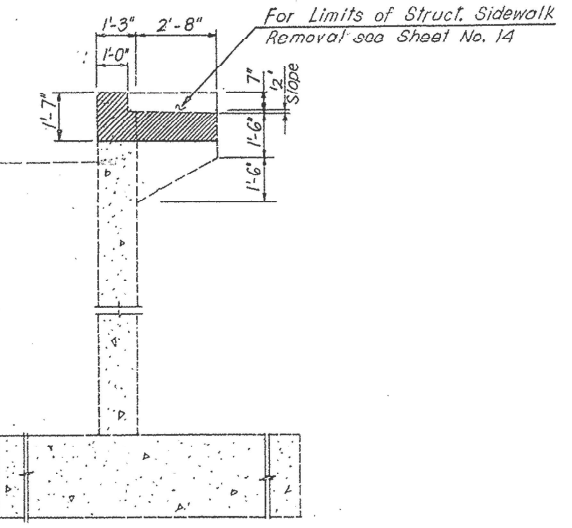
SECTION D-D



SECTION F-F



SECTION A-A SOUTH-WEST WING WALL



SECTION B-B

FOR INFORMATION ONLY

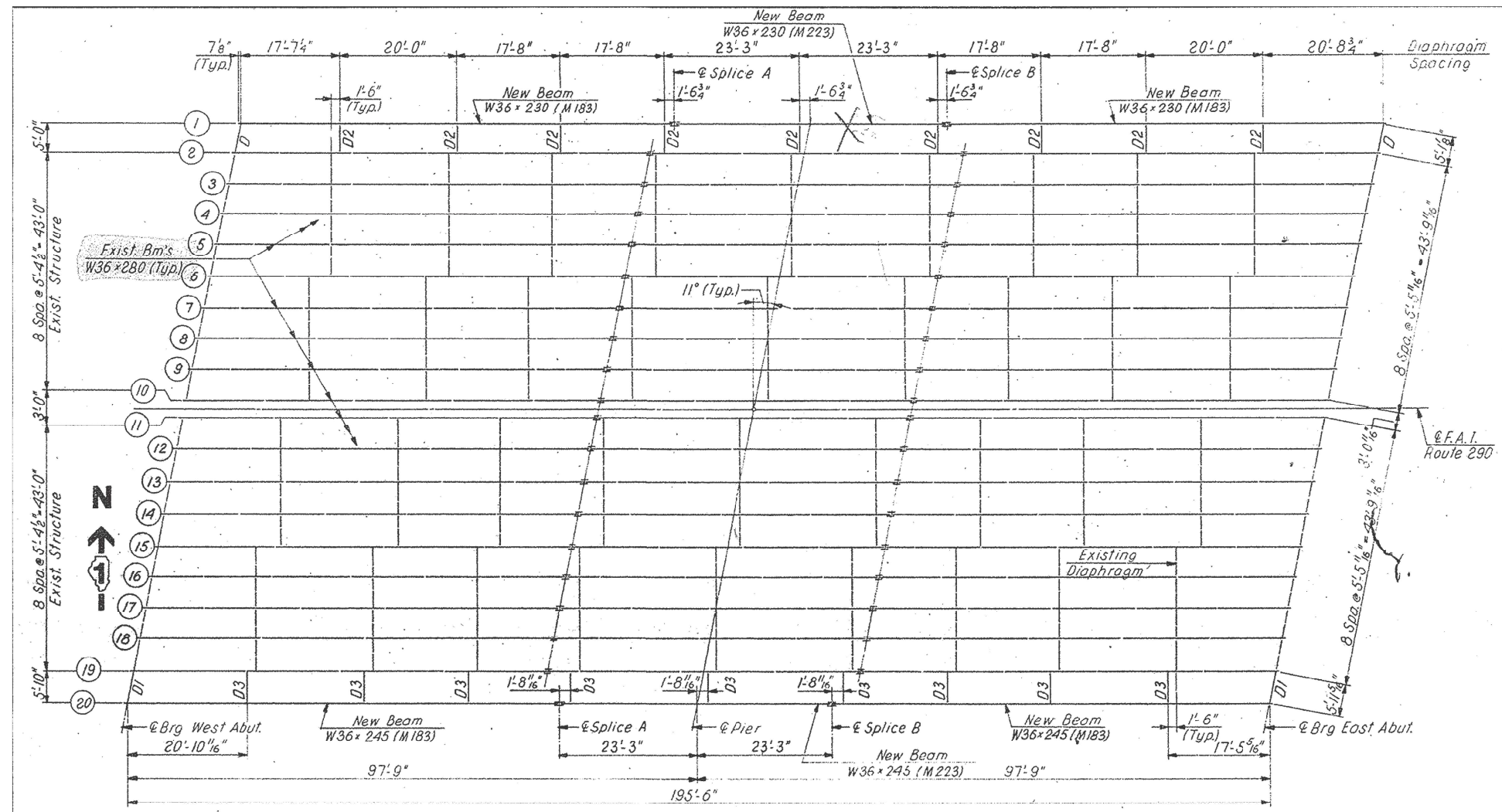
MODEL: Default
 FILE NAME: p:\mtdm\room.dat\illinois\pwwdot\Documents\DOT_Offices\Distrefc_1\Project\2012\1\CADData\Design\1\2012-2-28-EXISTING BRIDGE PLAN.dwg
 PROJECT: 2012\1\CADData\Design\1\Project\2012\1\2012-2-28-EXISTING BRIDGE PLAN.dwg

USER NAME = hassan	DESIGNED -	REVISED -
	DRAWN -	REVISED -
PLOT SCALE = 100,0000' / in.	CHECKED -	REVISED -
PLOT DATE = 8/11/2021	DATE -	REVISED -

STATE OF ILLINOIS
DEPARTMENT OF TRANSPORTATION

I-290 EISENHOWER EXPRESSWAY OVER DES PLAINES RIVER	
SCALE:	SHEET OF SHEETS STA. TO STA.

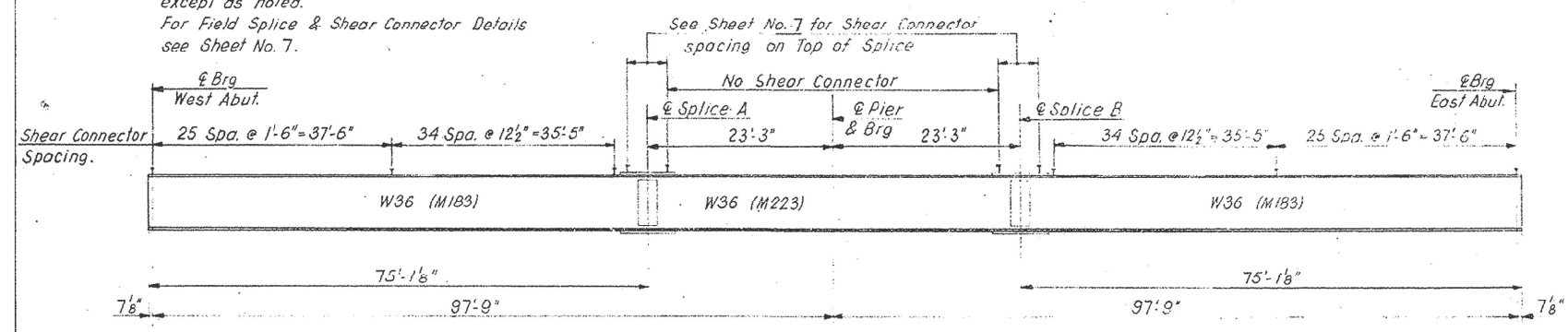
F.A.I. RTE. 290	SECTION 2021-115-B-R	COUNTY COOK	TOTAL SHEETS 15	SHEET NO. 9
			CONTRACT NO. 62P48	
ILLINOIS FED. AID PROJECT				



NOTES:

All Structural Steel shall be M183 (A36) except as noted.
For Field Splice & Shear Connector Details see Sheet No. 7.

**FRAMING PLAN
(NOT PART OF THIS CONTRACT)**



FOR INFORMATION ONLY

MODEL: Default
 FILE NAME: p:\pub\harramoon.dwg
 PROJECT: I-290 EISENHOWER EXPRESS
 SHEET: 11 OF 15
 DATE: 8/11/2021

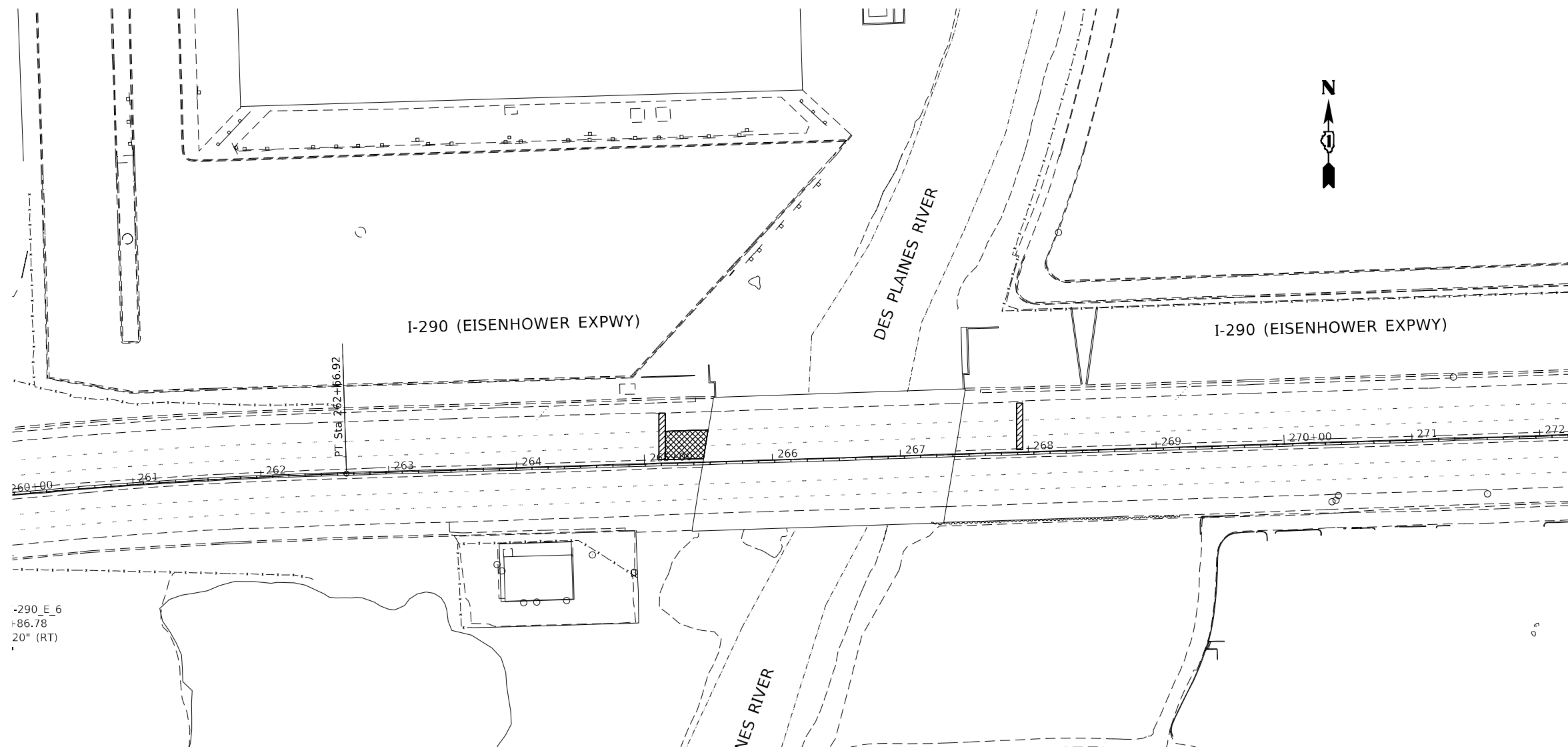
USER NAME = hassan	DESIGNED -	REVISED -
	DRAWN -	REVISED -
PLOT SCALE = 100,0000' / in.	CHECKED -	REVISED -
PLOT DATE = 8/11/2021	DATE -	REVISED -

**STATE OF ILLINOIS
DEPARTMENT OF TRANSPORTATION**

**I-290 EISENHOWER EXPRESS
OVER DES PLAINES RIVER**

SCALE: SHEET OF SHEETS STA. TO STA.

F.A.I. RTE. 290	SECTION 2021-115-B-R	COUNTY COOK	TOTAL SHEETS 15	SHEET NO. 11
			CONTRACT NO. 62P48	
ILLINOIS FED. AID PROJECT				



 36' X 8' FULL DEPTH CLASS D PATCH

 24' X 33' CONCRETE APPROACH SLAB MILL & OVERLAY
 PROP. PCC REMOVAL (VARIABLE DEPTH)
 AND HMA SURFACE COURSE, MIX "D", IL-9.5, N70, 1 1/2"

MODEL: Default
 FILE NAME: p:\hassan\m00000.dwg
 PROJECT: I:\Projects\2021\2021-115-B-R\2021-115-B-R.dwg
 PROJECT: I:\Projects\2021\2021-115-B-R\2021-115-B-R.dwg

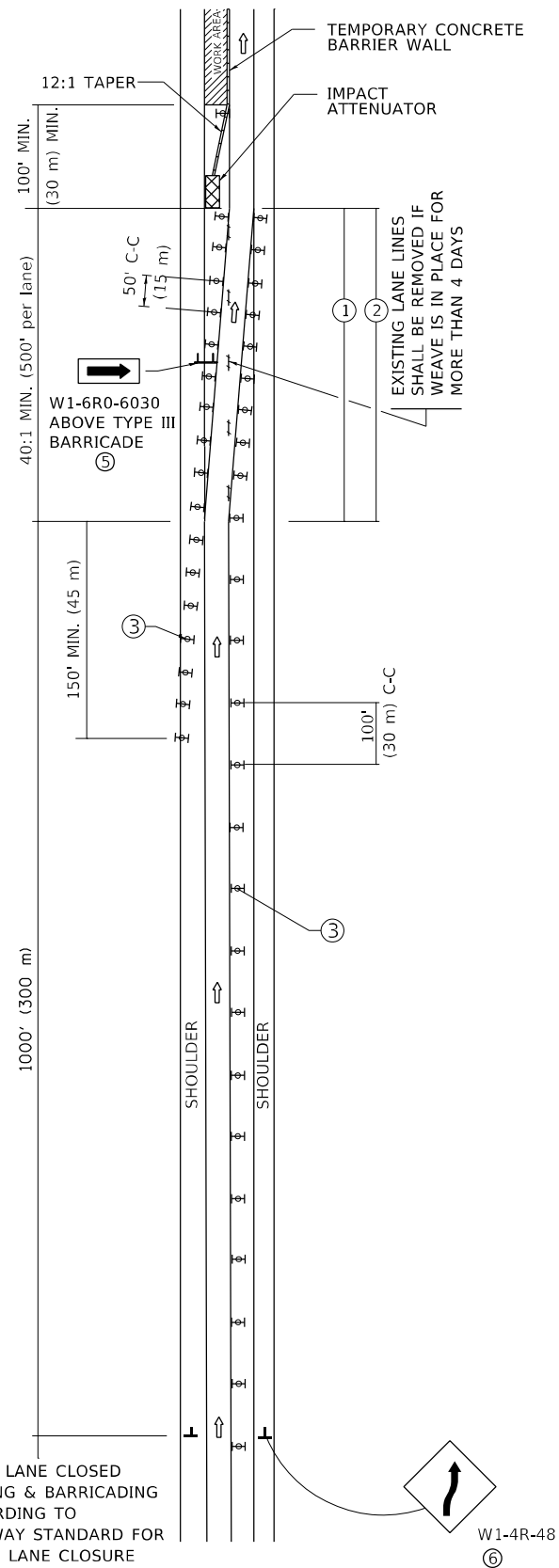
USER NAME = hassan	DESIGNED -	REVISED -
PLOT SCALE = 100,0000' / in.	DRAWN -	REVISED -
PLOT DATE = 8/11/2021	CHECKED -	REVISED -
	DATE -	REVISED -

**STATE OF ILLINOIS
 DEPARTMENT OF TRANSPORTATION**

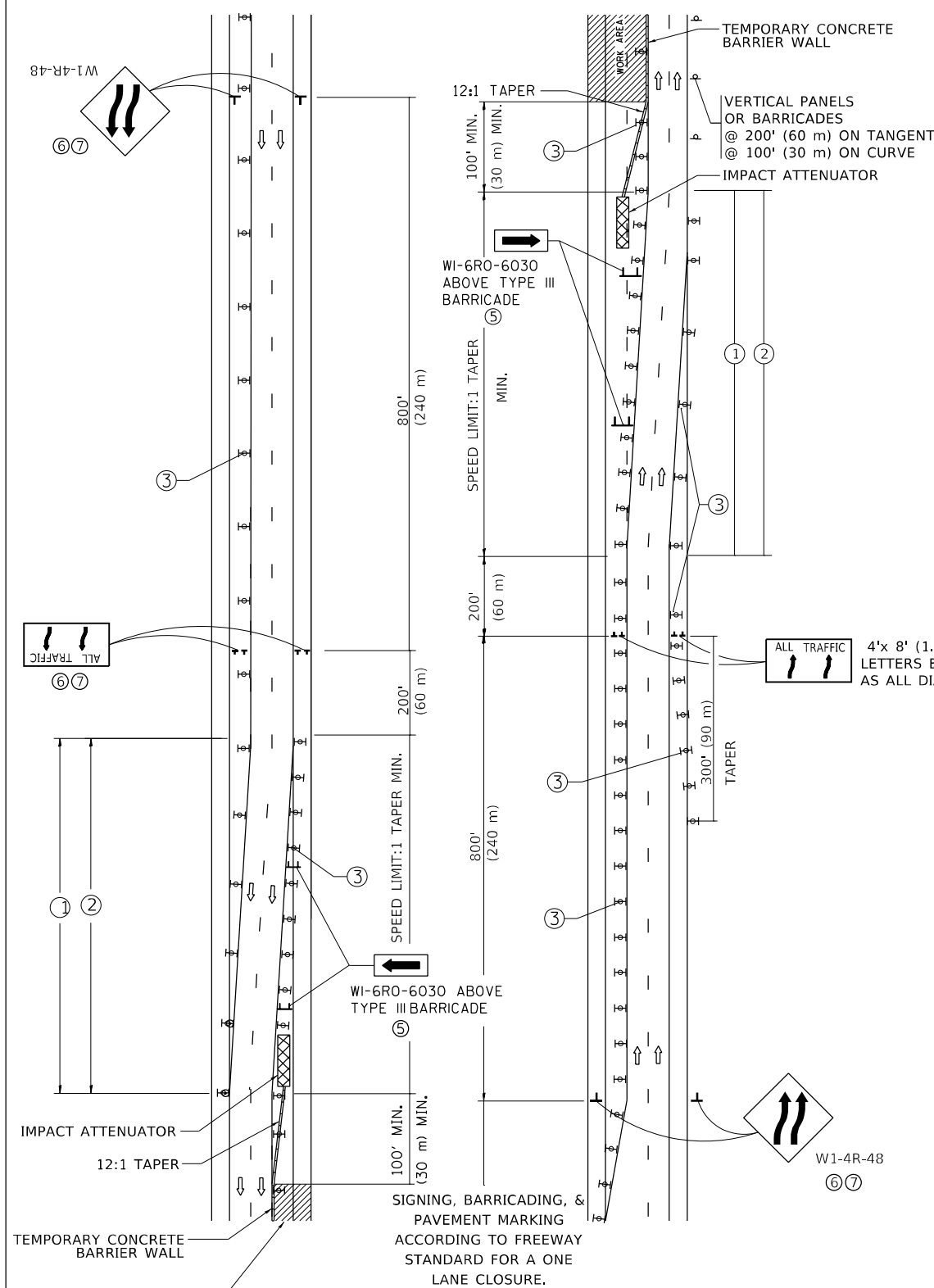
I-290 Eisenhower Expressway Over Des Plaines River (PATCHING)			
SCALE:	SHEET 1	OF 1	SHEETS
	STA.		TO STA.

F.A.J. RTE.	SECTION	COUNTY	TOTAL SHEETS	SHEET NO.
290	2021-115-B-R	COOK	15	13
CONTRACT NO. 62P48				
ILLINOIS FED. AID PROJECT				

SINGLE LANE WEAVE



MULTI-LANE WEAVE



GENERAL NOTES:

- ① EXISTING CONFLICTING PAVEMENT MARKING LINES SHALL BE REMOVED. PAVEMENT MARKING REMOVAL SHALL NOT BE REQUIRED FOR SINGLE LANE WEAVES UNDER 4 DAYS IN DURATION.
- ② CONTINUOUS REFLECTIVE TEMPORARY PAVEMENT MARKING TAPE SHALL BE PLACED THROUGHOUT THE TAPER AND FOR 300' (90 m) ALONG SIDE THE WORK AREA WHERE THE CLOSURE TIME IS GREATER THAN FOURTEEN DAYS. THE LEFT EDGE LINE SHALL BE YELLOW AND THE RIGHT EDGE LINE SHALL BE WHITE. FOR MULTI-LANE WEAVES LANE LINES SHALL BE 5 INCH, 10'-30' (3 m-9 m) SKIP DASH, WHITE.
- ③ PLASTIC DRUMS WITH STEADY BURN LIGHTS AT 50' (15 m) C-C SPACING IN TAPERS AND 100' (30 m) C-C SPACING IN TANGENTS.
- ④ ALL SIGNS SHALL BE POST MOUNTED IF THE CLOSURE TIME EXCEEDS FOUR DAYS.
- ⑤ TYPE III BARRICADES MAY BE OMITTED FOR SINGLE-LANE WEAVES UNDER 24-HOURS IN DURATION. W1-6 SIGNS WILL STILL BE REQUIRED. IF THE WIDTH OF OFFSET IS LESS THAN 6' THEN THE TYPE III BARRICADE WITH ATTACHED ARROW SIGN PANEL CAN BE ELIMINATED IN THE TAPER AREAS.
- ⑥ WHEN THE LENGTH OF THE SHIFTED SEGMENT (DISTANCE BETWEEN WEAVE POINTS) IS LESS THAN 1500', DOUBLE REVERSE CURVE SIGNS (W24-1) SHOULD BE USED INSTEAD OF THE REVERSE CURVE (W1-4) SIGNS. ARROWS ON THE 4'X8' "ALL TRAFFIC" SIGNS SHALL BE THE SAME SHAPE.
- ⑦ THE NUMBER OF ARROWS ON THESE SIGNS SHALL MATCH THE NUMBER OF LANES OPEN TO TRAFFIC.

SYMBOLS

- DIRECTION OF TRAFFIC
- WORK AREA
- SIGN ON PORTABLE OR PERMANENT SUPPORT
- TYPE II BARRICADE OR DRUM WITH MONO-DIRECTIONAL STEADY BURNING LIGHT
- TEMPORARY CONCRETE BARRIER WALL
- IMPACT ATTENUATOR
- W1-4R-48
- W24-1-48

ALL DIMENSIONS ARE IN INCHES (MILLIMETERS) UNLESS OTHERWISE SHOWN

MODEL: Default
FILE NAME: p:\pub\hassan\dot\Documents\DOT - Office\Drawings - 1\Project\2012\1\CADData\Design\DS55.dgn

USER NAME = hassan	DESIGNED - D.W.S.	REVISED - J.A.F. 02-06
	DRAWN -	REVISED - S.P.B. 01-07
PLOT SCALE = 100,0000' / in.	CHECKED -	REVISED - S.P.B. 12-09
PLOT DATE = 8/11/2021	DATE - 02-87	REVISED - M.D. 06-13

STATE OF ILLINOIS
DEPARTMENT OF TRANSPORTATION

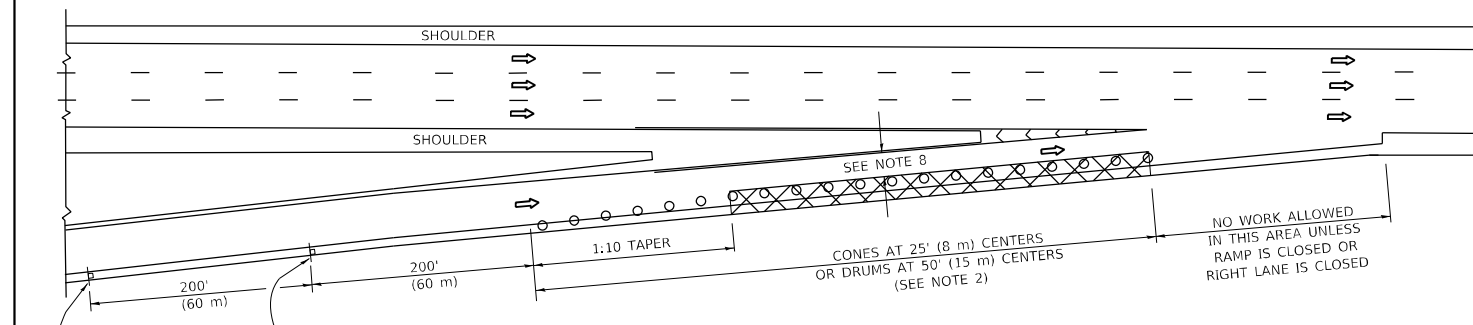
TRAFFIC CONTROL DETAILS FOR
FREEWAY SINGLE & MULTI-LANE WEAVE

SCALE: NONE SHEET 1 OF 1 SHEETS STA. TO STA.

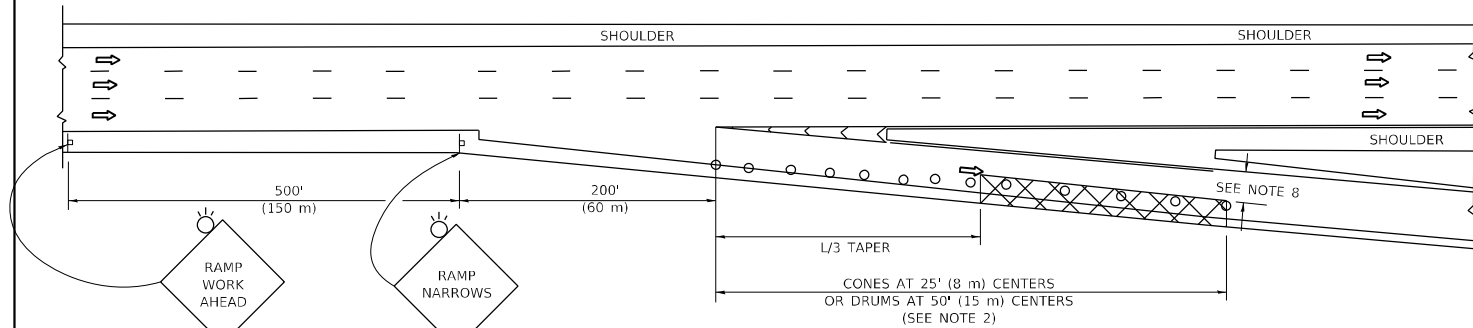
F.A.I. RTE.	SECTION	COUNTY	TOTAL SHEETS	SHEET NO.
290	2021-115-B-R	COOK	15	14
TC-09		CONTRACT NO. 62P48		
ILLINOIS FED. AID PROJECT				

PARTIAL RAMP CLOSURE DETAILS

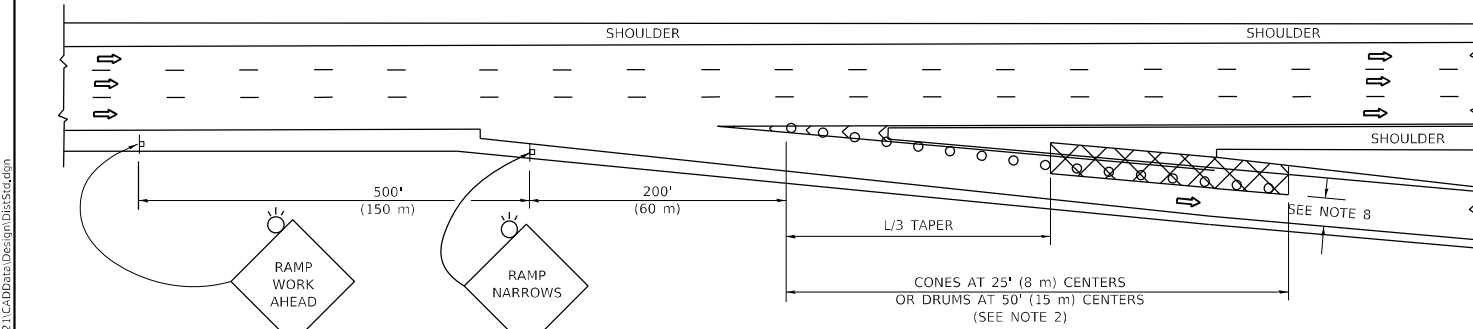
SHOULDER CLOSURE DETAILS



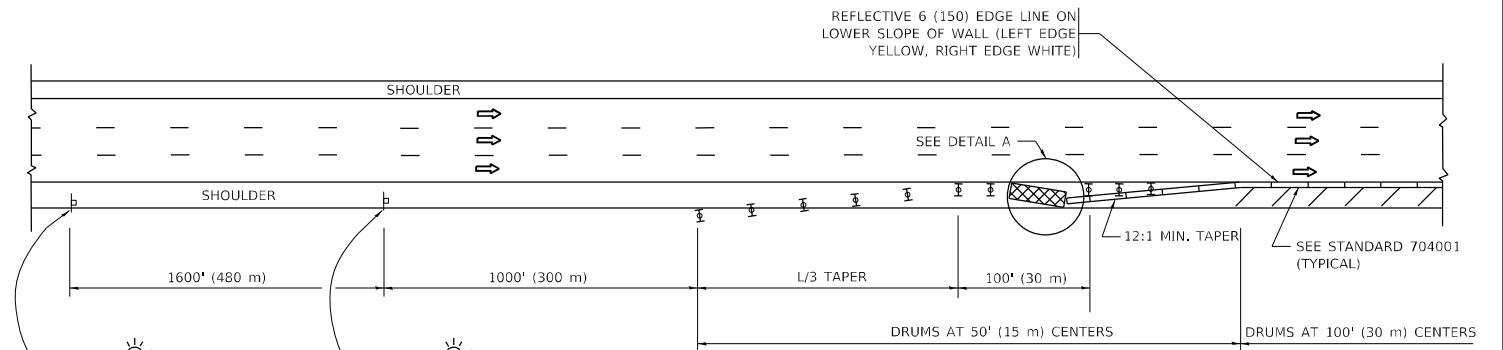
TYPICAL ENTRANCE RAMP



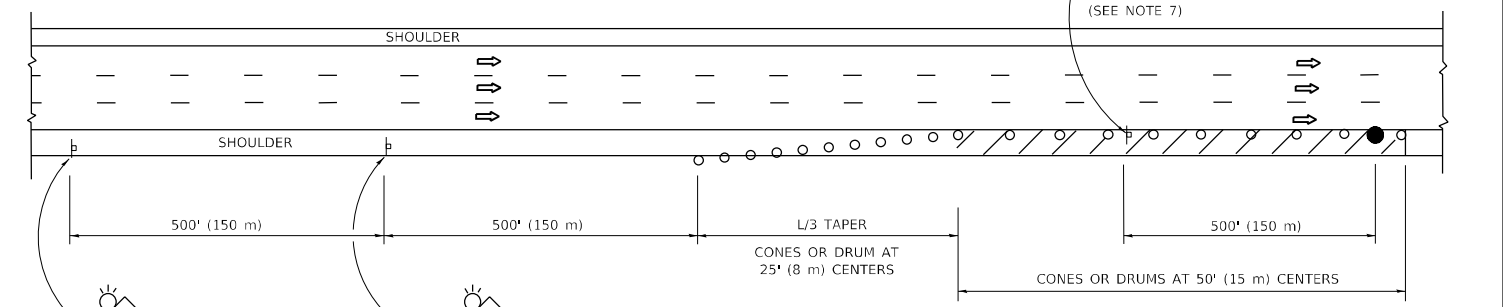
TYPICAL EXIT RAMP



TYPICAL EXIT RAMP

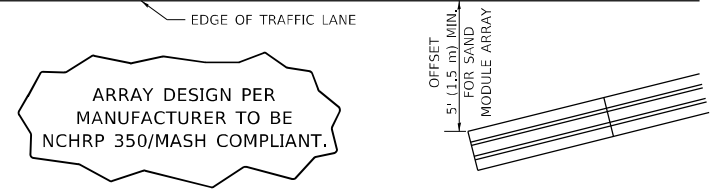


PERMANENT SHOULDER CLOSURE



TEMPORARY SHOULDER CLOSURE

THIS DETAIL IS USED WHERE:
 1. VEHICLES, EQUIPMENT, WORKERS OR THEIR ACTIVITIES ENCR OACH IN AN AREA CLOSER THAN 15' (4.5 m) TO THE EDGE OF PAVEMENT FOR A PERIOD IN EXCESS OF 15 MINUTES.



**DETAIL "A"
 IMPACT ATTENUATOR, TEMPORARY
 (SEE NOTE 5)**

SYMBOLS

- ACTIVE WORK AREA
- SIGN ON PORTABLE OR PERMANENT SUPPORT
- FLAGGER WITH CONTROL SIGN
- TYPE II BARRICADE OR DRUM
- CONE, DRUM OR BARRICADE
- IMPACT ATTENUATOR OF TYPE AND TEST LEVEL SPECIFIED

GENERAL NOTES:

1. THE "L" DISTANCE EQUALS:

$L = \frac{S^2}{30}$	$L = \frac{S^2}{1.47}$
$L = \frac{S^2}{30}$	$L = \frac{S^2}{1.47}$

W = WIDTH OF OFFSET IN FEET (METERS)
 S = NORMAL POSTED SPEED MPH (KM/H)
2. TYPE II BARRICADES OR DRUMS ARE REQUIRED FOR ALL NIGHTTIME CLOSURES. TYPE II BARRICADES OR DRUMS WITH MONODIRECTIONAL STEADY BURN LIGHTS ARE REQUIRED FOR DELINEATING OBSTACLES, EXCAVATIONS, OR HAZARDS EXCEEDING 100 FT (30m) IN LENGTH AT NIGHT.
3. ALL SIGNS SHALL BE POST MOUNTED IF THE CLOSURE TIME EXCEEDS FOUR DAYS.
4. FLASHING LIGHTS SHALL BE USED DURING THE HOURS OF DARKNESS AND SHALL BE INSTALLED ABOVE THE FIRST TWO SETS OF SIGNS.

5. THE IMPACT ATTENUATOR, TEMPORARY IS NOT REQUIRED WHEN THE TEMPORARY CONCRETE BARRIER WALL IS PROTECTED BY OR IS TIED INTO THE EXISTING GUARDRAIL. IF OFFSET IS LESS THAN 5 FEET USE NARROW USE TYPE DEVICE TO MEET NCHRP350/MASH.
6. AUTHORIZATION FROM THE DISTRICT'S BUREAU OF TRAFFIC IS REQUIRED FOR ALL FREEWAY CLOSURES.
7. THE FLAGGER AND FLAGGER SIGN ARE REQUIRED AT THE ABOVE WORK SITES WHEN:
 - a. FOUR OR MORE WORK VEHICLES ENTER THE TRAFFIC LANES IN A ONE HOUR PERIOD.
 - b. THE WORK AVTIVITY REQUIRES FREQUENT ENCR OACHMENT INTO THE LANE OPEN TO TRAFFIC.
 THE FLAGGER SHALL BE STATIONED APPROXIMATELY 100' (30 m) TO 200' (60 m) IN ADVANCE OF THE WORKERS.

8. 12' MIN. WIDTH TANGENT SECTION
 16' MIN. WIDTH CURVE SECTION.
9. TEMPORARY SHOULDER AND NON-SYSTEM INTERCHANGE PARTIAL RAMP CLOSURES ARE ALLOWED WEEKDAYS BETWEEN 9:00 A.M. AND 3:00 P.M. AND BETWEEN 7:00 P.M. AND 5:00 A.M. OR AS APPROVED BY THE EXPRESSWAY TRAFFIC OPERATIONS ENGINEER. PERMANENT SHOULDER AND PARTIAL RAMP CLOSURES WILL ONLY BE PERMITTED IF CALLED FOR IN THE PLANS OR AS APPROVED BY THE EXPRESSWAY OPERATIONS ENGINEER.

ALL DIMENSIONS ARE IN INCHES (MILLIMETERS) UNLESS OTHERWISE SHOWN.

MODEL: Default
 FILE NAME: p:\planningroom\dot\illinois\dot\Documents\DOT Office\Drawings\1\Projects\120121\1\CD\Drawings\Design\DCS\Std.dgn
 PROJECT: 120121\1\CD\Drawings\Design\DCS\Std.dgn

USER NAME = hassan	DESIGNED -	REVISED - S.P.B. 12-09
	DRAWN - D.W.S.	REVISED - M.D. 06-13
PLOT SCALE = 100,0000' / in.	CHECKED -	REVISED - M.D. 01-18
PLOT DATE = 8/11/2021	DATE - 11-96	REVISED - M.D. 10-20

**STATE OF ILLINOIS
 DEPARTMENT OF TRANSPORTATION**

**TRAFFIC CONTROL DETAILS FOR FREEWAY
 SHOULDER CLOSURES AND PARTIAL RAMP CLOSURES**

SCALE: NONE SHEET 1 OF 1 SHEETS STA. TO STA.

F.A.1 RTE.	SECTION	COUNTY	TOTAL SHEETS	SHEET NO.
290	2021-115-B-R	COOK	15	15
TC-17		CONTRACT NO. 62P48		
ILLINOIS FED. AID PROJECT				