

F.A. RTE.	SECTION	COUNTY	TOTAL SHEETS	SHEET NO.
VAR	(114BR, 127BR-1, 127BR)BP	FORD	26	1
		ILLINOIS	CONTRACT NO. 66M12	

INDEX OF SHEETS

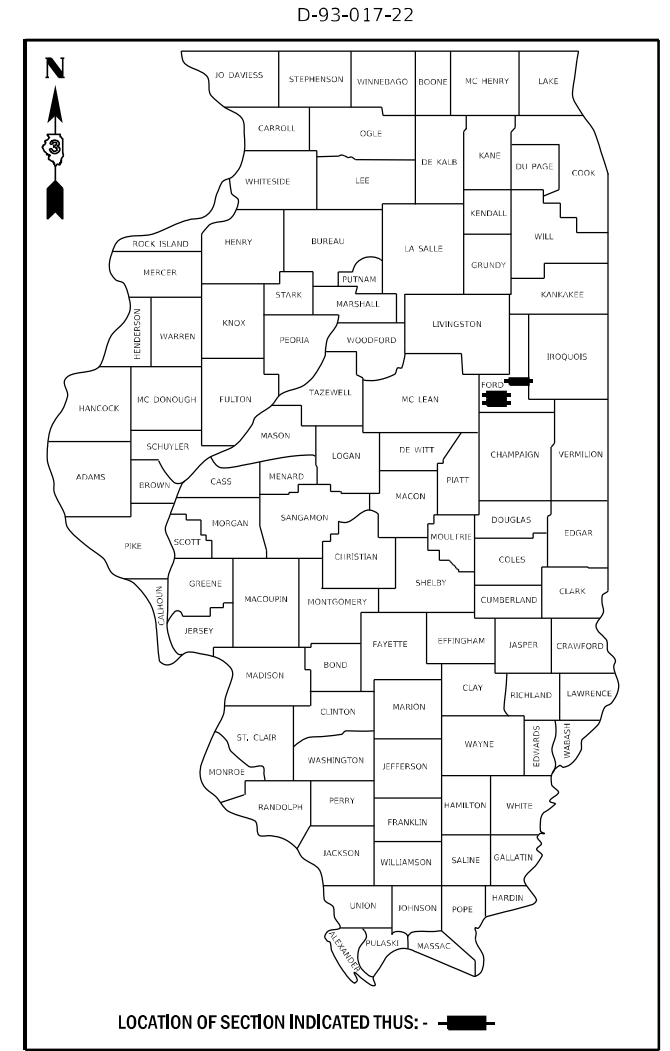
- 1. COVER SHEET
- 2 - 3. GENERAL NOTES
- 4 - 5. SUMMARY OF QUANTITIES
- 6. TYPICAL SECTIONS
- 7. SCHEDULES - LOCATION NO. 1 STRUCTURE NO. 027-0076
- 8. SCHEDULES - LOCATION NO. 2 STRUCTURE NO. 027-0084
- 9. SCHEDULES - LOCATION NO. 2 STRUCTURE NO. 027-0085
- 10 - 11. TRAFFIC CONTROL AND PROTECTION, STANDARD 701321 FOR LOCATION NO. 1
- 12. TEMPORARY INFORMATION SIGNING
- 13. TYPICAL PAVEMENT MARKING
- 14 - 17. EXISTING STRUCTURE DETAILS FOR LOCATION NO. 1 - STRUCTURE NO. 027-0076
- 18 - 21. EXISTING STRUCTURE DETAILS FOR LOCATION NO. 2 - STRUCTURE NO. 027-0084
- 22 - 26. EXISTING STRUCTURE DETAILS FOR LOCATION NO. 3 - STRUCTURE NO. 027-0085

STANDARDS

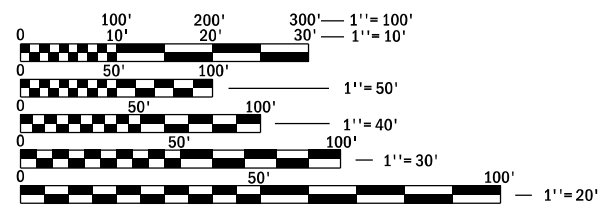
- 000001-08 STANDARD SYMBOLS, ABBREVIATIONS AND PATTERNS
- 001006 DECIMAL OF AN INCH AND OF A FOOT
- 701001-02 OFF-ROAD OPERATIONS 2L, 2W, MORE THAN 15' (4.5 m) AWAY
- 701006-05 OFF-ROAD OPERATIONS 2L, 2W, 15' (4.5 m) TO 24" (600 mm) FROM PAVEMENT EDGE
- 701201-05 LANE CLOSURE, 2L, 2W, DAY ONLY, FOR SPEEDS ≥ 45 MPH
- 701301-04 LANE CLOSURE, 2L, 2W, SHORT TIME OPERATIONS
- 701311-03 LANE CLOSURE, 2L, 2W, MOVING OPERATIONS - DAY ONLY
- 701321-18 LANE CLOSURE, 2L, 2W, BRIDGE REPAIR WITH BARRIER
- 701901-08 TRAFFIC CONTROL DEVICES
- 704001-08 TEMPORARY CONCRETE BARRIER

PROPOSED HIGHWAY PLANS

VARIOUS ROUTES
SECTION (114BR, 127BR-1, 127BR)BP
PROJECT NHPP-STP-KEUG(145)
BRIDGE PAINTING
FORD COUNTY
C-93-037-22



LOCATION NO. 1
STRUCTURE NO. 027-0076
CARRYING IL 54 OVER
E. BRANCH VERMILION RIVER
2.7 MILES SOUTH OF IL 54/115



FULL SIZE PLANS HAVE BEEN PREPARED USING STANDARD ENGINEERING SCALES. REDUCED SIZED PLANS WILL NOT CONFORM TO STANDARD SCALES. IN MAKING MEASUREMENTS ON REDUCED PLANS, THE ABOVE SCALES MAY BE USED.

J.U.L.I.E.
JOINT UTILITY LOCATION INFORMATION FOR EXCAVATION
1-800-892-0123
OR 811



LOCATION NO. 2
STRUCTURE NO. 027-0084
CARRYING IL 9/47 OVER
DRUMMER CREEK
0.25 MILES SOUTH OF IL 9



LOCATION NO. 3

STRUCTURE NO. 027-0085
CARRYING IL 9/47 OVER
DRUMMER CREEK
0.08 MILES NORTH OF IL 54

PROJECT ENGINEER: YOGESH PATEL P.E.
UNIT CHIEF: RON WOODSHANK
DISTRICT 3 NO. (815) 434-6131
CONTRACT NO. 66M12

FUNCTIONAL CLASSIFICATION

LOCATION NO. 1	LOCATION NO. 2 & 3
RURAL OTHER PRINCIPAL ARTERIAL	RURAL OTHER PRINCIPAL ARTERIAL
F.A.P. ROUTE 71 (IL 54)	F.A.P. ROUTE 326 (IL 9/47)
2019 ADT = 1050	2019 ADT = 3900
P.V. 83.3 % S.U. 4.8 % M.U. 11.4 %	P.V. 67.2 % S.U. 3.3 % M.U. 29.5 %

STATE OF ILLINOIS
DEPARTMENT OF TRANSPORTATION

SUBMITTED October 19, 2021

[Signature]
REGIONAL ENGINEER

December 10, 2021
[Signature]
ENGINEER OF DESIGN AND ENVIRONMENT

December 10, 2021
[Signature]
DIRECTOR OF HIGHWAYS PROJECT IMPLEMENTATION

**PRINTED BY THE AUTHORITY
OF THE STATE OF ILLINOIS**

GENERAL NOTES

PLAN DIMENSIONS AND DETAILS RELATIVE TO EXISTING PLANS ARE SUBJECT TO NOMINAL CONSTRUCTION VARIATIONS. THE CONTRACTOR SHALL FIELD VERIFY EXISTING DIMENSIONS AND DETAILS AFFECTING NEW CONSTRUCTION AND MAKE APPROVED ADJUSTMENTS PRIOR TO ORDERING OF MATERIALS. SUCH VARIATIONS SHALL NOT BE CAUSE FOR ADDITIONAL COMPENSATION IN SCOPE OF WORK; HOWEVER, THE CONTRACTOR WILL BE PAID FOR THE QUANTITY ACTUALLY FURNISHED AT THE UNIT PRICE BID FOR THE WORK.

CLEANING AND PAINTING OF EXISTING STRUCTURAL STEEL I-BEAMS AND STEEL COMPONENTS SHALL BE AS SPECIFIED IN THE FOLOWING SPECIAL PROVISIONS.

"CONTAINMENT AND DISPOSAL OF LEAD PAINT CLEANING RESIDUES".

"CONTAINMENT AND DISPOSAL OF NON-LEAD PAINT CLEANING RESIDUES".

"CLEANING AND PAINTING EXISTING STEEL STRUCTURES",

THE CONRACTOR IS BE REQUIRED TO SECURE WASTE CONTAINERS THAT REMAIN ON THE JOB SITE. THIS WILL ENTAIL THAT ALL WASTE CONTAINERS CANNOT BE MOVED OR OPENED DURING NON-WORKING HOURS.

WORKING DAYS SHALL BE CHARGED UNTIL THE CONTRACTOR OR SUBCONTRACTOR LISCENSED TO DISPOSED OF LEAD/NON-LEAD PAINT RESIDUES HAS REMOVED THE WASTE MATERIAL FROM THE JOB SITE ACCORDING TO ALL FEDERAL, STATE AND LOCAL LAWS AND ORDINANCES. IF THE LISCENSED CONTRACTOR OR SUBCONTRACTOR FAILS TO DISPOSE OF THE LEAD/NON-LEAD PAINT RESIDUES ON OR BEFORE THE SPECIFIED DATE, LIQUIDATED DAMAGES SHALL BE CHARGED PER CALENDAR DAY ACCORDING TO ARTICLE 108.09 OF THE STANDARD SPECIFICATIONS UNTIL SUCH TIME THAT ALL PAINT RESIDUE MATERIALS HAVE BEEN REMOVED FROM THE JOB SITE AND DISPOSED OF.

COMMITMENTS

STATE OF ILLINOIS
DEPARTMENT OF TRANSPORTATION
DISTRICT THREE
AS BUILT INFORMATION

SUPERVISING CONSTRUCTION FIELD ENGINEER

RESIDENT ENGINEER / TECHNICIAN

START & END DATES
OF CONSTRUCTION:

INSPECTORS:

STATE OF ILLINOIS
DEPARTMENT OF TRANSPORTATION
DISTRICT THREE

PREPARED BY: _____
DISTRICT STUDIES & PLANS ENGINEER

DATE: _____

EXAMINED BY: _____
DISTRICT CONSTRUCTION ENGINEER

DISTRICT MATERIALS ENGINEER

DISTRICT OPERATIONS ENGINEER

**STATE OF ILLINOIS
DEPARTMENT OF TRANSPORTATION**

GENERAL NOTES

SCALE: SHEET 1 OF 1 SHEETS STA. TO STA.

F.A. RTE.	SECTION	COUNTY	TOTAL SHEETS	SHEET NO.
VAR	(114BR, 127BR-1, 127BR)BP	FORD	26	2
CONTRACT NO. 66M12			ILLINOIS FED. AID PROJECT	

STRUCTURE NOTES

STRUCTURE NO. 027-0076 IS DESIGNATED AS "LOCATION 1".

EXISTING STRUCTURAL STEEL COATING ON STRUCTURE NO. 027-0076 ARE "NON-LEAD" COATINGS.

SSPC-QP1, "PAINTING CONTRACTOR CERTIFICATIONS" SHALL BE REQUIRED FOR THIS STRUCTURE.

CLEANING AND PAINTING STRUCTURAL STEEL I BEAMS/GIRDERS. AND STEEL COMPONENTS.

CLEANING AND PAINTING OF EXISTING STRUCTURAL STEEL I-BEAMS AND STEEL COMPONENTS SHALL BE AS SPECIFIED IN THE APPLICABLE SPECIAL PROVISIONS AND AS SPECIFIED BELOW.

CLEANING.

ALL EXISTING STRUCTURAL STEEL, INCLUDING ALL VISIBLE SURFACES OF THE STEEL I BEAMS, DIAPHRAGMS, STEEL COMPONENTS OF BEARING ASSEMBLIES, CROSS AND LATERAL BRACING, STEEL STIFFENERS, DRAINS STEEL ANGLE BRACKETS AND STEEL HANDRAILS (WHEN PRESENT).

ALL EXISTING STRUCTURAL STEEL COMPONENTS AS DESCRIBED ABOVE SHALL BE CLEANED PER THE REQUIREMENTS OF "NEAR WHITE BLAST CLEANING - SSPC-SP-10".

PAINTING.

THE FINAL FINISH COAT FOR THE "EXTERIOR" FACE OF THE FASCIA BEAMS, THE BOTTOM FLANGE OF THE FASCIA BEAMS AND THE EXTERIOR BEARINGS SHALL BE "GREEN, MUNSELL NO. 7.5G 4/8.

THE FINAL FINISH COAT FOR THE INTERIOR SURFACE OF THE FASCIA BEAMS/GIRDERS, ALL EXPOSED SURFACES OF THE INTERIOR BEAMS/GIRDERS. STEEL COMPONENTS OF ALL INTERIOR BEARING ASSEMBLIES, CROSS AND LATERAL BRACING, STEEL STIFFENERS, DRAINS, STEEL ANGLE BRACKETS AND STEEL HANDRAILS (WHEN PRESENT) SHALL BE "GRAY, MUNSELL NO. 5B 7/1.

STEEL HAND RAILS (WHEN PRESENT); THE FINAL FINSH COAT FOR ALL STEEL COMPONENTS OF THE HANDRAIL SHALL BE "GREEN, MUNSELL NO. 7.5G 4/8.

STRUCTURE NOTES CONT'D

STRUCTURE NO. 027-0084 IS DESIGNATED AS "LOCATION 2".

EXISTING STRUCTURAL STEEL COATING ON STRUCTURE NO. 027-0076 ARE "NON-LEAD" COATINGS.

SSPC-QP1, "PAINTING CONTRACTOR CERTIFICATIONS" SHALL BE REQUIRED FOR THIS STRUCTURE.

CLEANING AND PAINTING STRUCTURAL STEEL I BEAMS/GIRDERS. AND STEEL COMPONENTS.

CLEANING AND PAINTING OF EXISTING STRUCTURAL STEEL I-BEAMS AND STEEL COMPONENTS SHALL BE AS SPECIFIED IN THE APPLICABLE SPECIAL PROVISIONS AND AS SPECIFIED BELOW.

CLEANING.

ALL EXISTING STRUCTURAL STEEL, INCLUDING ALL VISIBLE SURFACES OF THE STEEL I BEAMS, DIAPHRAGMS, STEEL COMPONENTS OF BEARING ASSEMBLIES, CROSS AND LATERAL BRACING, STEEL STIFFENERS, DRAINS STEEL ANGLE BRACKETS AND STEEL HANDRAILS (WHEN PRESENT).

ALL EXISTING STRUCTURAL STEEL COMPONENTS AS DESCRIBED ABOVE SHALL BE CLEANED PER THE REQUIREMENTS OF "NEAR WHITE BLAST CLEANING - SSPC-SP-10".

PAINTING.

THE FINAL FINISH COAT FOR THE "EXTERIOR" FACE OF THE FASCIA BEAMS, THE BOTTOM FLANGE OF THE FASCIA BEAMS AND THE EXTERIOR BEARINGS SHALL BE "GREEN, MUNSELL NO. 7.5G 4/8.

THE FINAL FINISH COAT FOR THE INTERIOR SURFACE OF THE FASCIA BEAMS/GIRDERS, ALL EXPOSED SURFACES OF THE INTERIOR BEAMS/GIRDERS. STEEL COMPONENTS OF ALL INTERIOR BEARING ASSEMBLIES, CROSS AND LATERAL BRACING, STEEL STIFFENERS, DRAINS, STEEL ANGLE BRACKETS AND STEEL HANDRAILS (WHEN PRESENT) SHALL BE "GRAY, MUNSELL NO. 5B 7/1.

STEEL HAND RAILS (WHEN PRESENT); THE FINAL FINSH COAT FOR ALL STEEL COMPONENTS OF THE HANDRAIL SHALL BE "GREEN, MUNSELL NO. 7.5G 4/8.

STRUCTURE NOTES CONT'D

STRUCTURE NO. 027-0085 IS DESIGNATED AS "LOCATION 3".

EXISTING STRUCTURAL STEEL COATING ON STRUCTURE NO. 027-0076 ARE "NON-LEAD" COATINGS.

SSPC-QP1, "PAINTING CONTRACTOR CERTIFICATIONS" SHALL BE REQUIRED FOR THIS STRUCTURE.

CLEANING AND PAINTING STRUCTURAL STEEL I BEAMS/GIRDERS. AND STEEL COMPONENTS.

CLEANING AND PAINTING OF EXISTING STRUCTURAL STEEL I-BEAMS AND STEEL COMPONENTS SHALL BE AS SPECIFIED IN THE APPLICABLE SPECIAL PROVISIONS AND AS SPECIFIED BELOW.

CLEANING.

ALL EXISTING STRUCTURAL STEEL, INCLUDING ALL VISIBLE SURFACES OF THE STEEL I BEAMS, DIAPHRAGMS, STEEL COMPONENTS OF BEARING ASSEMBLIES, CROSS AND LATERAL BRACING, STEEL STIFFENERS, DRAINS STEEL ANGLE BRACKETS AND STEEL HANDRAILS (WHEN PRESENT).

ALL EXISTING STRUCTURAL STEEL COMPONENTS AS DESCRIBED ABOVE SHALL BE CLEANED PER THE REQUIREMENTS OF "NEAR WHITE BLAST CLEANING - SSPC-SP-10".

PAINTING.

THE FINAL FINISH COAT FOR THE "EXTERIOR" FACE OF THE FASCIA BEAMS, THE BOTTOM FLANGE OF THE FASCIA BEAMS AND THE EXTERIOR BEARINGS SHALL BE "GREEN, MUNSELL NO. 7.5G 4/8.

THE FINAL FINISH COAT FOR THE INTERIOR SURFACE OF THE FASCIA BEAMS/GIRDERS, ALL EXPOSED SURFACES OF THE INTERIOR BEAMS/GIRDERS. STEEL COMPONENTS OF ALL INTERIOR BEARING ASSEMBLIES, CROSS AND LATERAL BRACING, STEEL STIFFENERS, DRAINS, STEEL ANGLE BRACKETS AND STEEL HANDRAILS (WHEN PRESENT) SHALL BE "GRAY, MUNSELL NO. 5B 7/1.

STEEL HAND RAILS (WHEN PRESENT); THE FINAL FINSH COAT FOR ALL STEEL COMPONENTS OF THE HANDRAIL SHALL BE "GREEN, MUNSELL NO. 7.5G 4/8.

MODEL: Default
FILE NAME: p:\ulidect-pw-beadby.com\FWIDOT\Documents\DOT Office\District 3\Project\0366M12\CADD\0366M12 - PLANS.dwg

USER NAME = woodshank1	DESIGNED - RW	REVISED -
	DRAWN - RW	REVISED -
PLOT SCALE = 100,0000 ' / in.	CHECKED - YP	REVISED -
PLOT DATE = 11/20/2021	DATE - 8/19/2021	REVISED -

**STATE OF ILLINOIS
DEPARTMENT OF TRANSPORTATION**

GENERAL NOTES FOR STRUCTURES

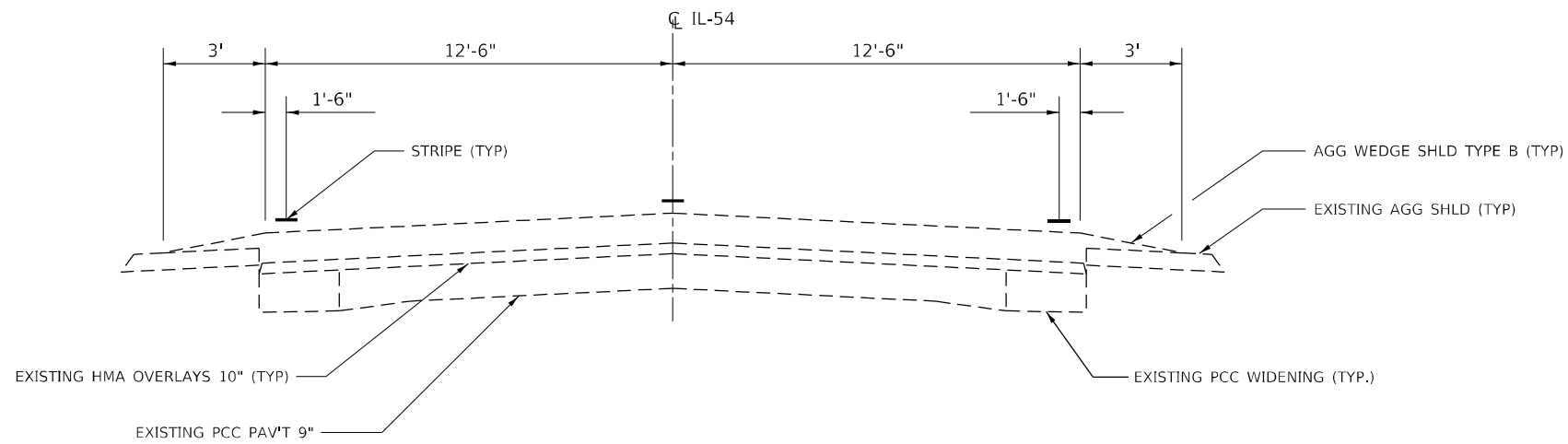
SCALE: SHEET 1 OF 1 SHEETS STA. TO STA.

F.A. RTE.	SECTION	COUNTY	TOTAL SHEETS	SHEET NO.
VAR	(114BR, 127BR-1, 127BR)BP	FORD	26	3
			CONTRACT NO. 66M12	
		ILLINOIS	FED. AID PROJECT	

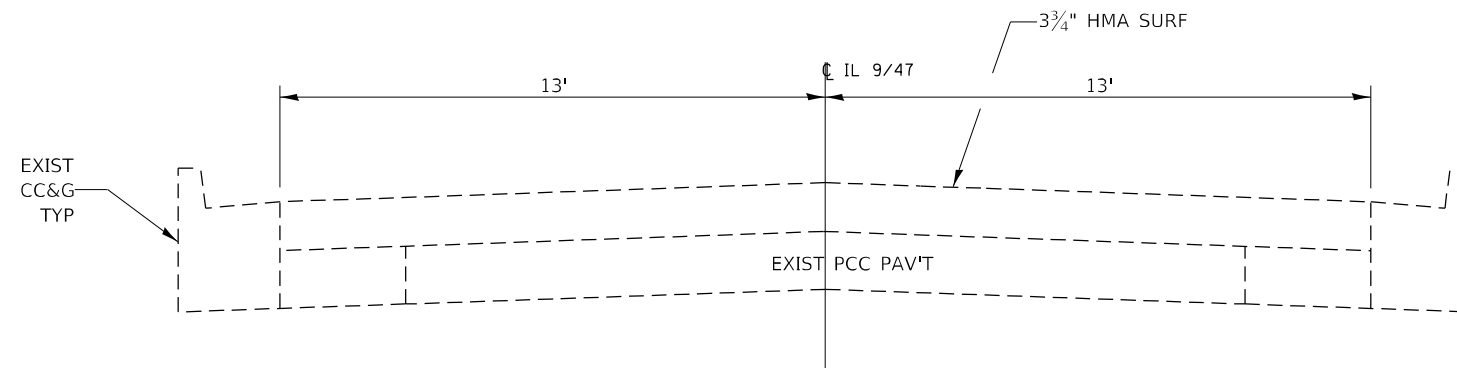
CODE NO.	ITEM	UNIT	TOTAL QUANTITY	CONSTRUCTION CODE	
				80% FED. 20% STATE STP-RUR	80% FED. 20% STATE NHPP
				BRIDGE	BRIDGE
				0047	0047
		S.N. 027-0076	S.N. 027-0084		
X5067501	BRIDGE CLEANING AND PAINTING WARRANTY NUMBER 1	L SUM	1	1	
X5067502	BRIDGE CLEANING AND PAINTING WARRANTY NUMBER 2	L SUM	1		1
X5067503	BRIDGE CLEANING AND PAINTING WARRANTY NUMBER 3	L SUM	1		1
X7010101	TRAFFIC CONTROL AND PROTECTION, STANDARD 701201	EACH	3	1	2
Z0030850	TEMPORARY INFORMATION SIGNING	SQ FT	126	42	84

MODEL: Default
 FILE NAME: p:\ulidect-pw-bead-fy.com\FW\DOT\Documents\DOT Office\District 3\Project\66M12\CADD\DATA\0366M12 - PLANS.dwg

USER NAME = woodshank1	DESIGNED - RW	REVISED -	STATE OF ILLINOIS DEPARTMENT OF TRANSPORTATION	SUMMARY OF QUANTITIES			F.A. RTE.	SECTION	COUNTY	TOTAL SHEETS	SHEET NO.
DRAWN - RW	REVISIED -	VAR					(114BR, 127BR-1, 127BR)BP	FORD	26	5	
PLOT SCALE = 100,0000' / in.	CHECKED - YP	REVISIED -		SCALE: SHEET 2 OF 2 SHEETS STA. TO STA.			CONTRACT NO. 66M12				
PLOT DATE = 11/20/2021	DATE - 8/19/2021	REVISIED -					ILLINOIS FED. AID PROJECT				



TYPICAL SECTION
LOCATION NO. 1 - STRUCTURE NO. 027-0076



TYPICAL SECTION
LOCATION NO. 2 - STRUCTURE NO. 027-0084
LOCATION NO. 3 - STRUCTURE NO. 027-0085

MODEL: Default
 FILE NAME: p:\project-aw-beadley.com\PIV\DOT\Documents\DOT Office\District 3\Project\0366M12\CADD\0366M12 - PLANS.dwg

USER NAME = woodshank1	DESIGNED - RW	REVISED -
	DRAWN - RW	REVISED -
PLOT SCALE = 100,0000' / in.	CHECKED - YP	REVISED -
PLOT DATE = 11/20/2021	DATE - 8/19/2021	REVISED -

STATE OF ILLINOIS
DEPARTMENT OF TRANSPORTATION

TYPICAL SECTIONS			
SCALE:	SHEET 1	OF 1 SHEETS	STA. TO STA.

F.A. RTE.	SECTION	COUNTY	TOTAL SHEETS	SHEET NO.
VAR	(114BR, 127BR-1, 127BR)BP	FORD	26	6
CONTRACT NO. 66M12			ILLINOIS FED. AID PROJECT	

SCHEDULE - TRAFFIC CONTROL AND PROTECTION
LOCATION NO. 1 - STRUCTURE NO. 027-0076

LOCATION	TRAFFIC CONTROL AND PROTECTION STANDARD 701321	TRAFFIC CONTROL AND PROTECTION STANDARD 701201	TEMPORARY RUMBLE STRIPS (SPECIAL)	TEMPORARY BRIDGE TRAFFIC SIGNALS	TEMPORARY INFORMATION SIGNING	TEMPORARY CONCRETE BARRIER	IMPACT ATTENUATORS, TEMPORARY NON-REDIRECTIVE, NARROW TEST LEVEL 3
	EACH	EACH	EACH	EACH	SQ FT	FOOT	EACH
STRUCTURE NO. 027-0076	1	1	6	1	42	250	2
TOTAL	1	1	6	1	42	250	2

SCHEDULE - PAVEMENT MARKING
LOCATION NO. 1 - STRUCTURE NO. 027-0076

LOCATION	PAVEMENT MARKING REMOVAL WATERBLASTING	POLYUREA PAVEMENT MARKING TYPE I
	LINE 6"	LINE 6"
	SQ FT	FOOT
STRUCTURE NO. 027-0076	65	130
TOTAL	65	130

SCHEDULE - CLEANING AND PAINTING
LOCATION NO. 1 - STRUCTURE NO. 027-0076

LOCATION	CONTAINMENT AND DISPOSAL NON-LEAD PAINT CLEANING RESIDUES NO. 1	CLEANING AND PAINTING STEEL BRIDGE NO. 1	BRIDGE CLEANING AND PAINTING WARRANTY NUMBER 1
	L SUM	L SUM	L SUM
STRUCTURE NO. 027-0076			
TOTAL	1	1	1

MODEL: Default
FILE NAME: p:\u0002\paw_bentley.com\PIV\DOT\Documents\DOT Office\District 3\Project\0366M12\CADD\0366M12 - PLANS.dwg

USER NAME = woodshank1	DESIGNED - RW	REVISED -
	DRAWN - RW	REVISED -
PLOT SCALE = 100,0000' / in.	CHECKED - YP	REVISED -
PLOT DATE = 11/20/2021	DATE - 8/19/2021	REVISED -

**STATE OF ILLINOIS
DEPARTMENT OF TRANSPORTATION**

SCHEDULES			
FOR LOCATION NO. 1 - STRUCTURE NO. 027-0076			
SCALE:	SHEET 1 OF 3 SHEETS	STA.	TO STA.

F.A. RTE.	SECTION	COUNTY	TOTAL SHEETS	SHEET NO.
VAR	(1148R, 127BR-1, 127BR)BP	FORD	26	7
			CONTRACT NO. 66M12	
		ILLINOIS	FED. AID PROJECT	

SCHEDULE - TRAFFIC CONTROL AND PROTECTION
 LOCATION NO. 2 - STRUCTURE NO. 027-0084

LOCATION	TRAFFIC CONTROL AND PROTECTION STANDARD 701201	TEMPORARY INFORMATION SIGNING
	L SUM	SQ FT
TOTAL	1	42

SCHEDULE - CLEANING AND PAINTING
 LOCATION NO. 2 - STRUCTURE NO. 027-0084

LOCATION	CONTAINMENT AND DISPOSAL NON-LEAD PAINT CLEANING RESIDUES NO. 2	CLEANING AND PAINTING STEEL BRIDGE NO. 2	BRIDGE CLEANING AND PAINTING WARRANTY NUMBER 2
	L SUM	L SUM	L SUM
STRUCTURE NO. 027-0084	1		
TOTAL	1	1	1

MODEL: Default
 FILE NAME: p:\u0002\paw_bentley.com\P\W\DOT\Documents\DOT Office\District 3\Project\0366M12\CADD\0366M12 - PLANS.dwg

USER NAME = woodshank1	DESIGNED - RW	REVISED -
	DRAWN - RW	REVISED -
PLOT SCALE = 100,0000' / in.	CHECKED - YP	REVISED -
PLOT DATE = 11/20/2021	DATE - 8/19/2021	REVISED -

**STATE OF ILLINOIS
 DEPARTMENT OF TRANSPORTATION**

SCHEDULES	
LOCATION NO. 2 - STRUCTURE NO. 027-0084	
SCALE:	SHEET 2 OF 3 SHEETS STA. TO STA.

F.A. RTE.	SECTION	COUNTY	TOTAL SHEETS	SHEET NO.
VAR	(114BR, 127BR-1, 127BR)BP	FORD	26	8
			CONTRACT NO. 66M12	
			ILLINOIS FED. AID PROJECT	

SCHEDULE - TRAFFIC CONTROL AND PROTECTION
 LOCATION NO. 2 - STRUCTURE NO. 027-0085

LOCATION	TRAFFIC CONTROL AND PROTECTION STANDARD 701201	TEMPORARY INFORMATION SIGNING
	L SUM	SQ FT
TOTAL	1	42

SCHEDULE - CLEANING AND PAINTING
 LOCATION NO. 3 - STRUCTURE NO. 027-0085

LOCATION	CONTAINMENT AND DISPOSAL NON-LEAD PAINT CLEANING RESIDUES NO. 3	CLEANING AND PAINTING STEEL BRIDGE NO. 3	BRIDGE CLEANING AND PAINTING WARRANTY NUMBER 3
	L SUM	L SUM	L SUM
STRUCTURE NO. 027-0085		1	1
TOTAL	1	1	1

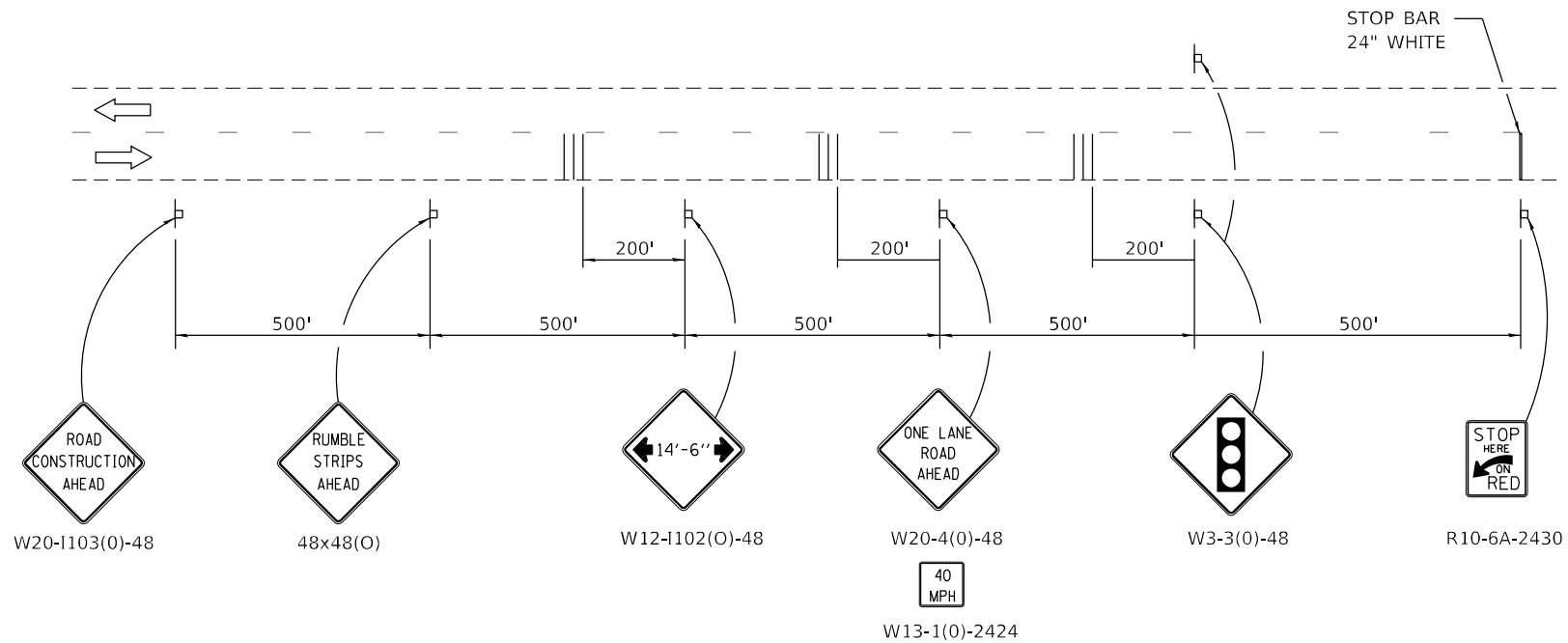
MODEL: Default
 FILE NAME: p:\u1d2caw_bentley.com\P1\DOT\Documents\DOT Office\District 3\Project\0366M12\CADD\0366M12 - PLANS.dwg

USER NAME = woodshank1	DESIGNED - RW	REVISED -
	DRAWN - RW	REVISED -
PLOT SCALE = 100,0000' / in.	CHECKED - YP	REVISED -
PLOT DATE = 11/20/2021	DATE - 8/19/2021	REVISED -

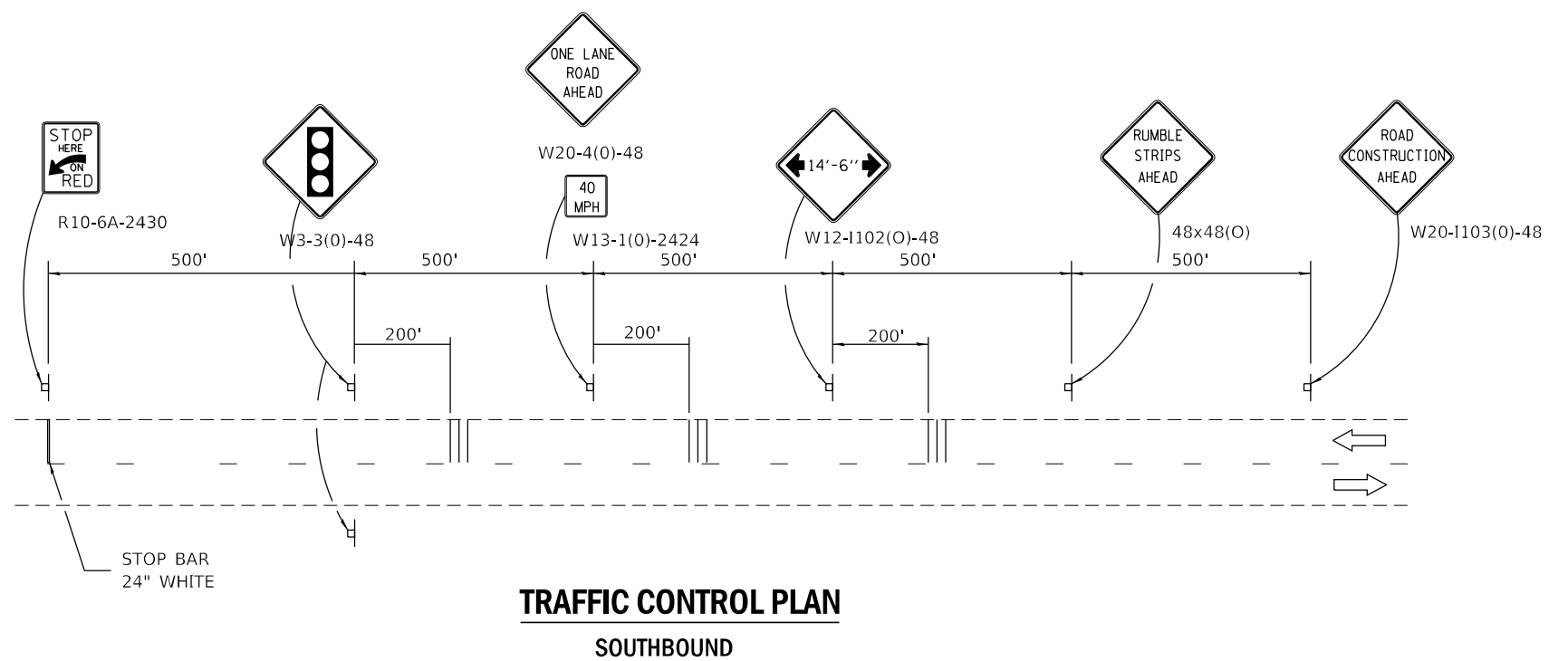
**STATE OF ILLINOIS
 DEPARTMENT OF TRANSPORTATION**

SCHEDULES	
LOCATION NO. 3 - STRUCTURE NO. 027-0085	
SCALE:	SHEET 3 OF 3 SHEETS STA. TO STA.

F.A. RTE.	SECTION	COUNTY	TOTAL SHEETS	SHEET NO.
VAR	(114BR, 127BR-1, 127BR)BP	FORD	26	9
			CONTRACT NO. 66M12	
ILLINOIS FED. AID PROJECT				



TRAFFIC CONTROL PLAN
NORTHBOUND



TRAFFIC CONTROL PLAN
SOUTHBOUND

MODEL: Default
FILE NAME: p:\project-aw-beadley.com\PIV\DOT\Documents\DOT Office\District 3\Project\366M12\CADD\366M12 - PLANS.dwg

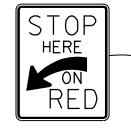
USER NAME = woodshank1	DESIGNED - RW	REVISED -
	DRAWN - RW	REVISED -
PLOT SCALE = 100,0000' / in.	CHECKED - YP	REVISED -
PLOT DATE = 11/20/2021	DATE - 8/19/2021	REVISED -

STATE OF ILLINOIS
DEPARTMENT OF TRANSPORTATION

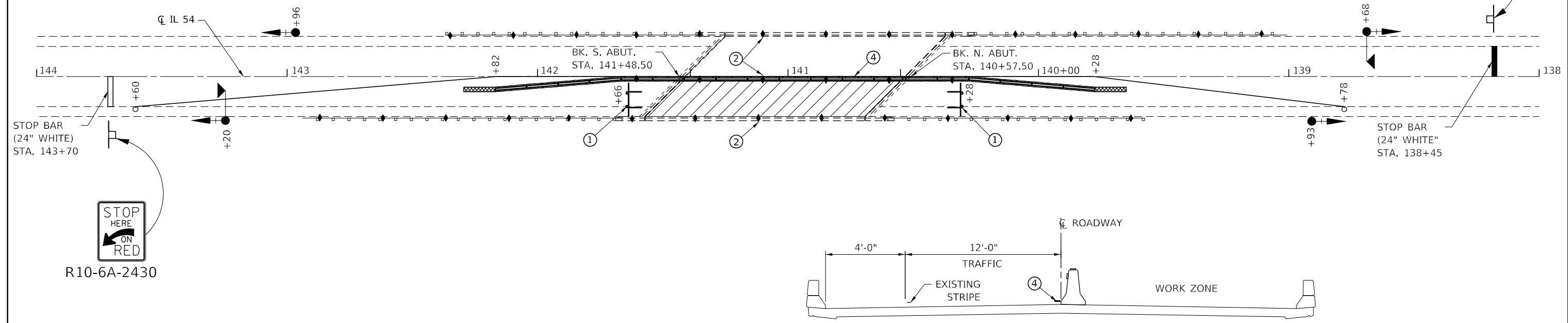
TRAFFIC CONTROL AND PROTECTION, STANDARD 701321
ADVANCED SIGNING - FOR LOCATION NO. 1

F.A. RTE.	SECTION	COUNTY	TOTAL SHEETS	SHEET NO.
VAR	(114BR, 127BR-1, 127BR)BP	FORD	26	10
CONTRACT NO. 66M12				
ILLINOIS FED. AID PROJECT				

SCALE: SHEET 1 OF 2 SHEETS STA. TO STA.



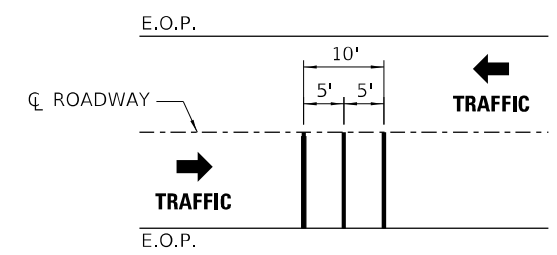
R10-6A-2430



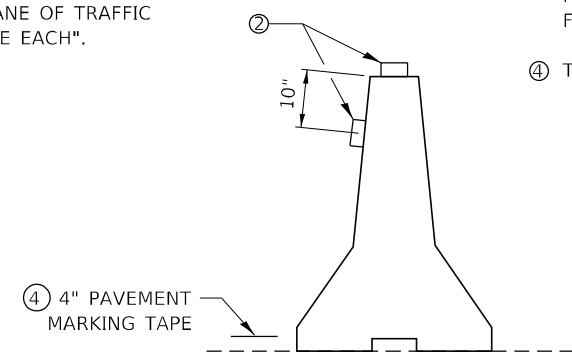
CROSS SECTION
LOOKING NORTH

LEGEND

- WORK ZONE
- TRAFFIC CONTROL DRUM WITH STEADY BURNING LIGHT (TAPERS)
- TRAFFIC CONTROL DRUM (TANGENTS)
- BARRICADES, TYPE III WITH STEADY BURNING LIGHT
- SIGN
- IMPACT ATTENUATOR, TEMPORARY, (NON-REDIRECTIVE, NARROW) TEST LEVEL 3
- TEMPORARY CONCRETE BARRIER
- TEMPORARY BRIDGE TRAFFIC SIGNAL WITH BACKPLATE AND MICROWAVE DETECTOR
- TEMPORARY BRIDGE TRAFFIC SIGNAL WITH BACKPLATE



TEMPORARY RUMBLE STRIP (SPECIAL)
FOR PAYMENT PURPOSES, EACH LANE OF TRAFFIC SHALL BE CONSIDERED "ONE EACH".



TEMPORARY CONCRETE BARRIER

- ① TYPE III BARRICADE TO BE PLACED WHEN NO WORK IS BEING PERFORMED.
- ② GUARDRAIL/BARRIER WALL REFLECTORS AT 25' CTS. SEE STANDARDS 704001 AND 782006.
- ③ THE EDGE OF THE POST MOUNTED SIGNAL HEAD SHALL BE BETWEEN 24" AND 6' FROM THE EDGE OF SHOULDER.
- ④ TEMPORARY PAVEMENT MARKING

GENERAL NOTES

THIS DETAIL SHALL BE USED IN CONJUNCTION WITH TRAFFIC CONTROL AND PROTECTION, STANDARD 701321.

THIS STANDARD IS USED WHERE, AT ANY TIME, ANY VEHICLE, EQUIPMENT, WORKERS, OR THEIR ACTIVITIES WILL ENCROACH ON ONE LANE OF A BRIDGE. TRAFFIC SIGNALS AND A POSITIVE BARRIER ARE REQUIRED.

TRAFFIC SIGNALS SHALL BE OPERATIONAL ONLY WHEN ALL TRAFFIC CONTROLS ARE IN PLACE. WHEN TRAFFIC SIGNALS ARE NOT IN OPERATION, FLAGGERS SHALL BE USED AND TRAFFIC CONTROL SHALL CONFORM TO STANDARD 701201 OR 701206.

TEMPORARY CONCRETE BARRIER SHALL BE ACCORDING TO STANDARD 704001.

EXISTING OR TEMPORARY PAVEMENT MARKINGS SHALL BE ON BOTH SIDES OF OPEN LANE FROM STOP BAR TO STOP BAR.

ALL DIMENSIONS ARE IN INCHES (MILLIMETERS) UNLESS OTHERWISE SHOWN.

TEMPORARY PAVEMENT MARKING AS SHOWN ON THIS DETAIL, SHALL NOT BE PAID FOR SEPARATELY BUT SHALL BE INCLUDED IN THE COST OF THE STANDARD.

MODEL: Default
FILE NAME: p:\project\paw\beadefy.com\FW\DOT\Documents\DOT Office\Drawings\Project\13666M12\CADDData\13666M12 - PLANS.dwg

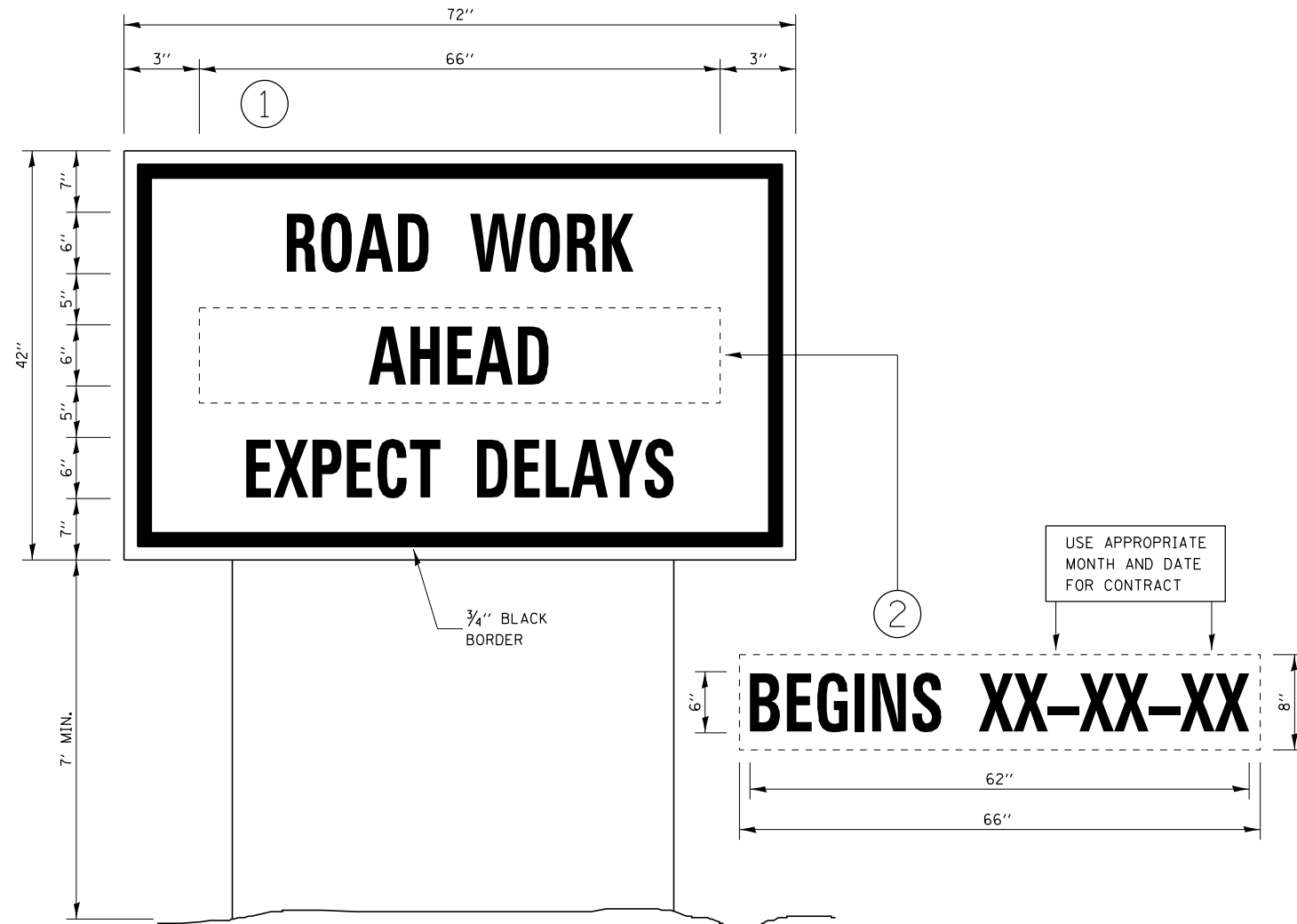
USER NAME = woodshank1	DESIGNED - RW	REVISED -
	DRAWN - RW	REVISED -
PLOT SCALE = 100,0000' / in.	CHECKED - YP	REVISED -
PLOT DATE = 11/20/2021	DATE - 8/19/2021	REVISED -

STATE OF ILLINOIS
DEPARTMENT OF TRANSPORTATION

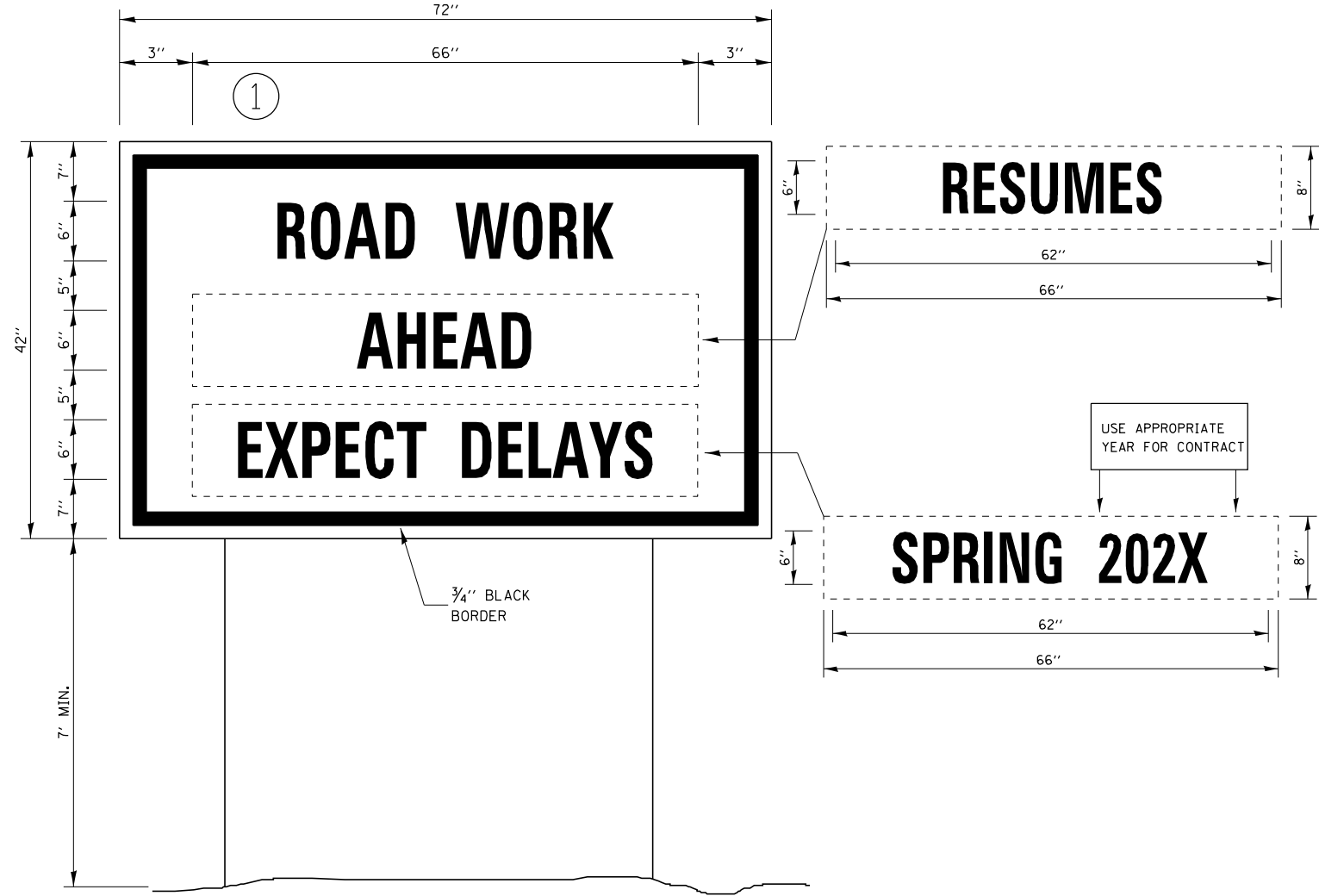
TRAFFIC CONTROL AND PROTECTION, STANDARD 701321
FOR LOCATION NO. 1

SCALE: SHEET 2 OF 2 SHEETS STA. TO STA.

F.A. RTE.	SECTION	COUNTY	TOTAL SHEETS	SHEET NO.
VAR	(114BR, 127BR-1, 127BR)BP	FORD	26	11
CONTRACT NO. 66M12				
ILLINOIS FED. AID PROJECT				



TEMPORARY INFORMATION SIGNING



WINTER SHUT DOWN SIGNING

NOTES:

1. USE 6" D BLACK LETTERING ON FLOURESENT ORANGE BACKGROUND.
2. ERECT SIGNS AT LOCATIONS IN ADVANCE OF THE "ROAD CONSTRUCTION AHEAD" SIGNS AS DIRECTED BY THE ENGINEER.
3. ERECT SIGN ① WITH INSTALLED PANEL ② A MINIMUM OF ONE WEEK PRIOR TO THE START OF THE LANE CLOSURE.
4. REMOVE PANEL ② ON THAT DATE.
5. SEE SPECIAL PROVISION "TEMPORARY INFORMATION SIGNING" FOR ADDITIONAL INFORMATION.
6. WILL BE PAID FOR PER SQ FT AS "TEMPORARY INFORMATION SIGNING". EACH SIGN = 21 SQ FT AND THE DATE PANEL ② WILL NOT BE MEASURED SEPARATELY FOR PAYMENT.

MODEL: Default
 FILE NAME: p:\project-cw-beadefy.com\FW\DOT\Documents\DOT Office\Director_3\Project\366M12\CADD\Date_D366M12 - PLANS.dwg

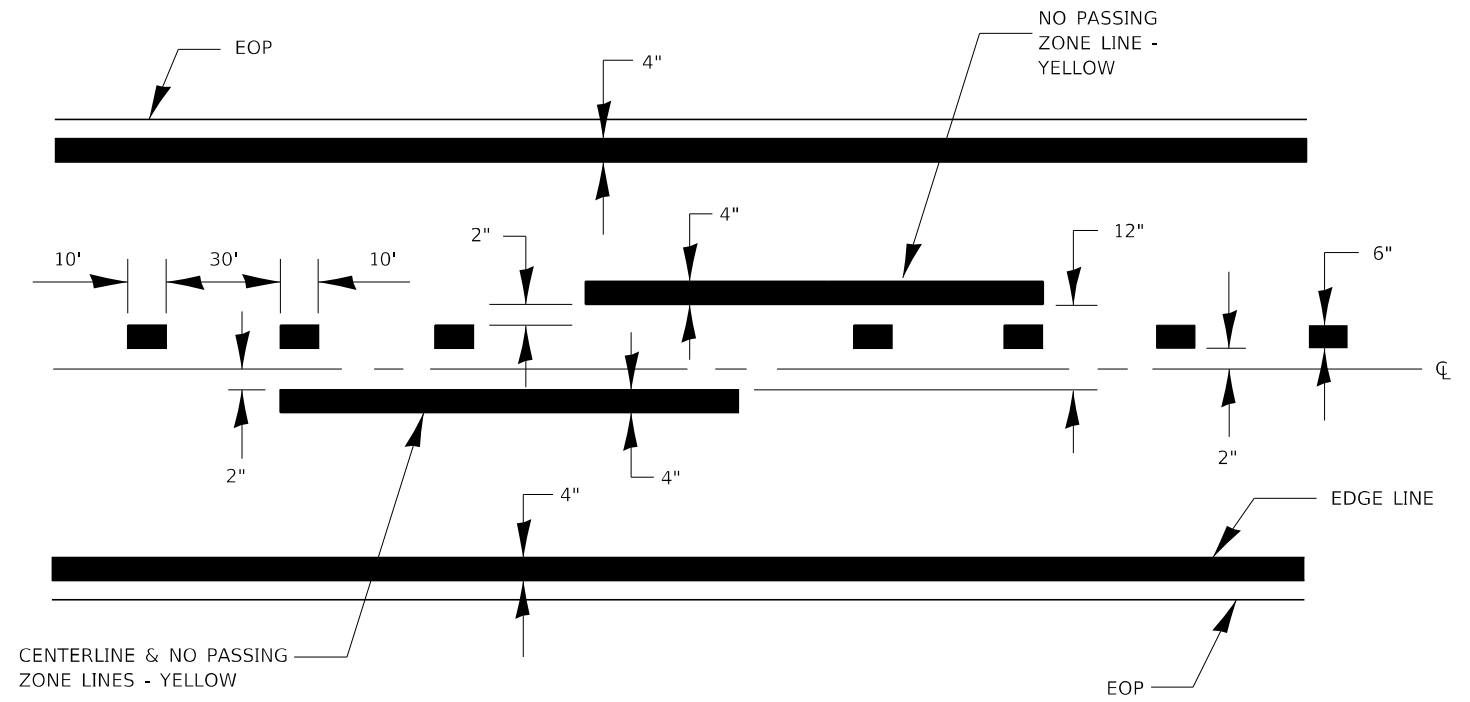
USER NAME = woodshank1	DESIGNED - RW	REVISED -
	DRAWN - RW	REVISED -
PLOT SCALE = 100,0000' / in.	CHECKED - YP	REVISED -
PLOT DATE = 11/20/2021	DATE - 8/19/2021	REVISED -

**STATE OF ILLINOIS
DEPARTMENT OF TRANSPORTATION**

TEMPORARY INFORMATION SIGNING

SCALE: SHEET 1 OF 1 SHEETS STA. TO STA.

F.A. RTE.	SECTION	COUNTY	TOTAL SHEETS	SHEET NO.
VAR	(114BR, 127BR-1, 127BR)BP	FORD	26	12
			CONTRACT NO. 66M12	
ILLINOIS FED. AID PROJECT				



PAVEMENT MARKING
2L, 2W ROADS

MODEL: Default
 FILE NAME: p:\ultra\paw_bentley.com\PW\DOT\Documents\DOT Office\District 3\Project\0366M12\CADD\0366M12 - PLANS.dwg

USER NAME = woodshank1	DESIGNED - RW	REVISED -
	DRAWN - RW	REVISED -
PLOT SCALE = 100,0000' / in.	CHECKED - YP	REVISED -
PLOT DATE = 11/20/2021	DATE - 8/19/2021	REVISED -

**STATE OF ILLINOIS
DEPARTMENT OF TRANSPORTATION**

PAVEMENT MARKING

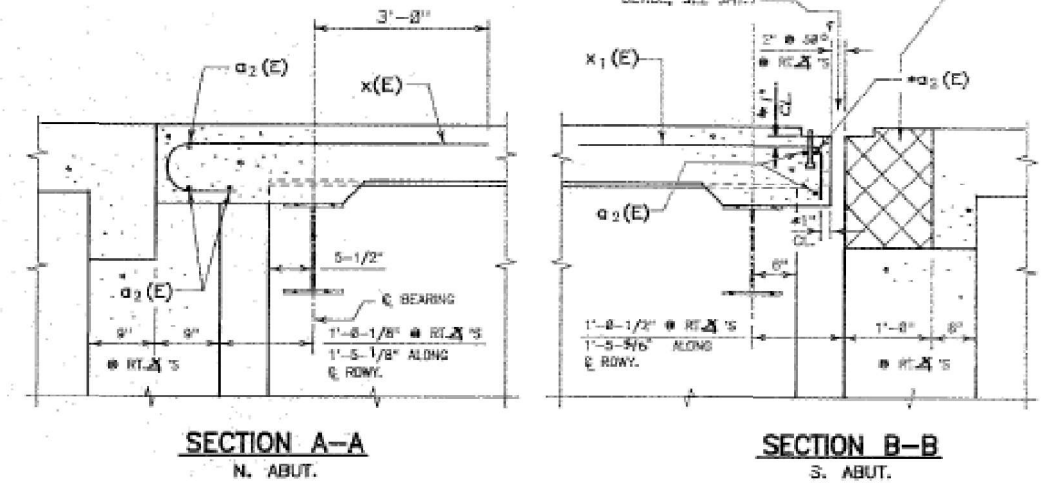
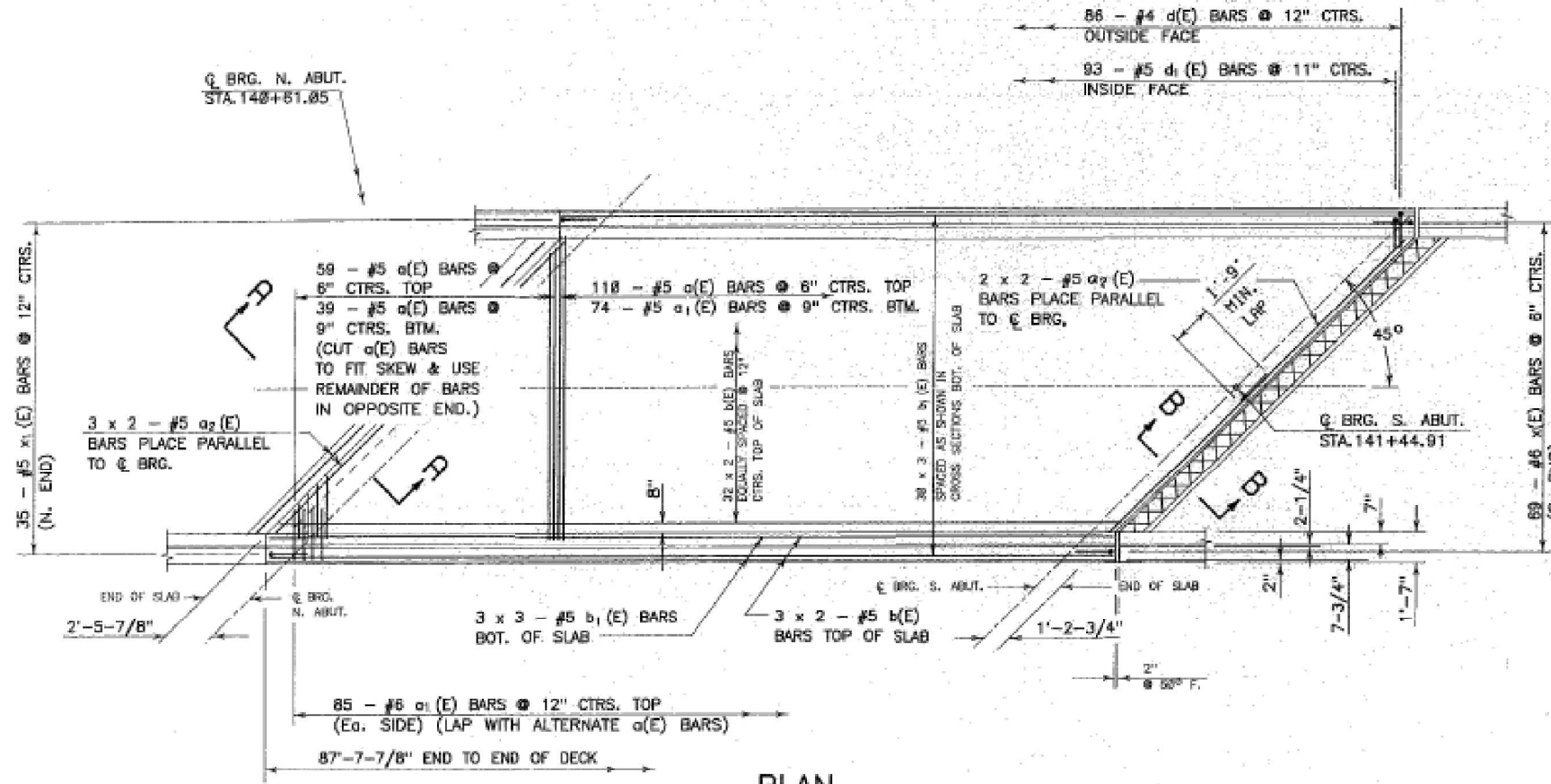
SCALE: SHEET 1 OF 1 SHEETS STA. TO STA.

F.A. RTE.	SECTION	COUNTY	TOTAL SHEETS	SHEET NO.
VAR	(1148R, 127BR-1, 127BR)BP	FORD	26	13
CONTRACT NO. 66M12			ILLINOIS FED. AID PROJECT	

STATE OF ILLINOIS
DEPARTMENT OF TRANSPORTATION

ROUTE NO.	SECTION	COUNTY	TOTAL SHEETS	SHEET NO.
F.A. 71	114BR	FORD	41	15
FED. AID DIST. NO.		ILLINOIS	FED. AID PROJECT	

SHEET 14
OF 14 SHEETS



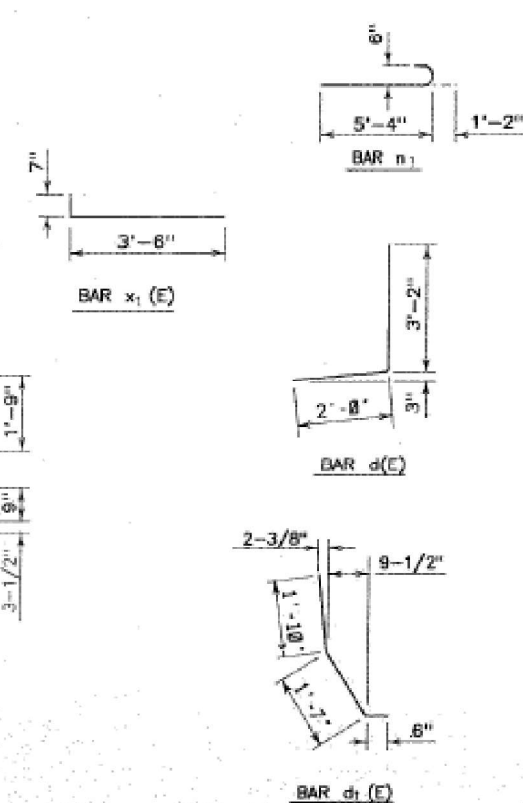
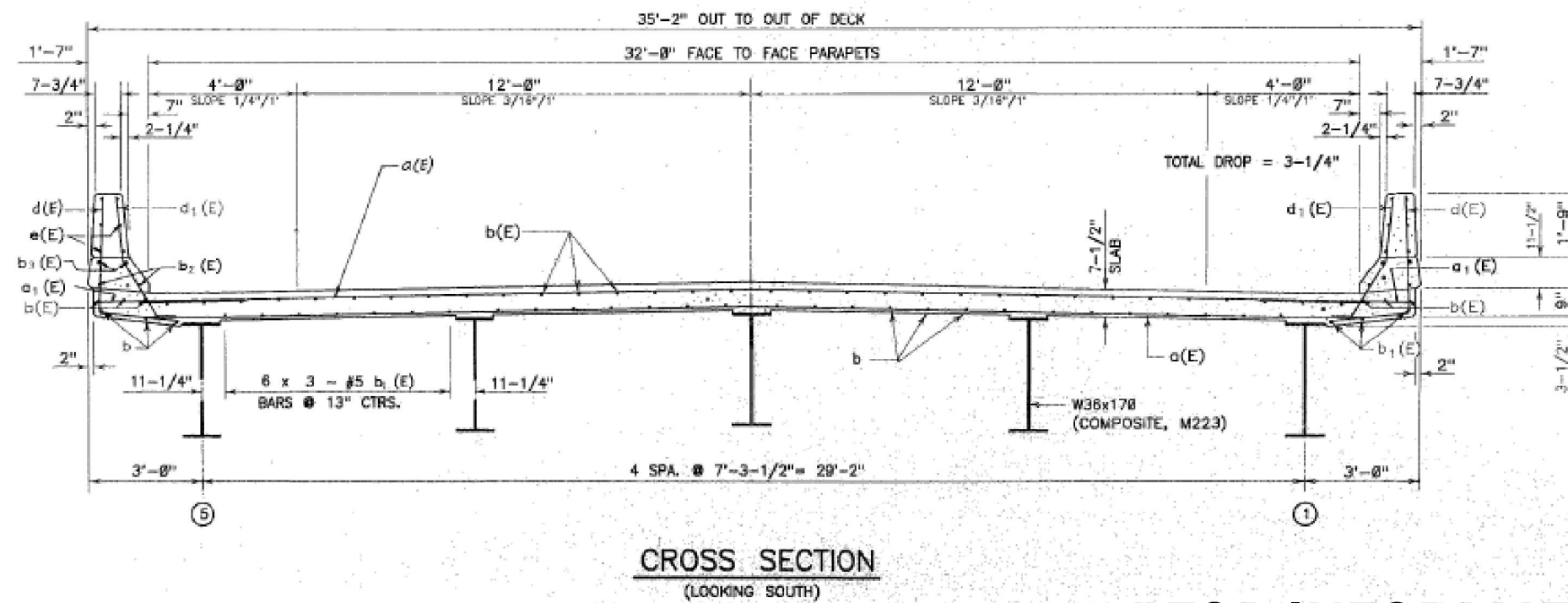
NOTES: REINFORCEMENT BARS DESIGNATED (E) SHALL BE EPOXY COATED.

BARS INDICATED THUS: 2Ø x 2 - #5 ETC. INDICATES 2Ø LINES OF BARS 2 LENGTHS PER LINE.

BILL OF MATERIAL (SUPERSTRUCTURE)

BAR NO.	SIZE	LENGTH	SHAPE
a(E)	282 #5	32'-6"	---
a1(E)	178 #6	4'-0"	---
a2(E)	18 #5	24'-6"	---
b(E)	76 #5	44'-6"	---
b1(E)	98 #5	38'-3"	---
b2(E)	8 #5	44'-8"	---
b3(E)	8 #8	45'-3"	---
d(E)	172 #4	5'-2"	---
d1(E)	188 #5	3'-11"	---
e(E)	68 #4	17'-2"	---
x(E)	59 #6	6'-6"	---
x1(E)	35 #5	4'-1"	---

CLASS X CONCRETE SUPERSTRUCTURE C.Y. 94
REINF. BARS (EPOXY COATED) LBS. 21,148
NEOPRENE EXP. JT. (2") LIN. FT. 45



SUPERSTRUCTURE
E. BRANCH VERMILION RIVER
F.A. RTE. 71 SECTION 114BR
FORD COUNTY, ILLINOIS
STA. 141+03.00

"FOR INFORMATION ONLY"

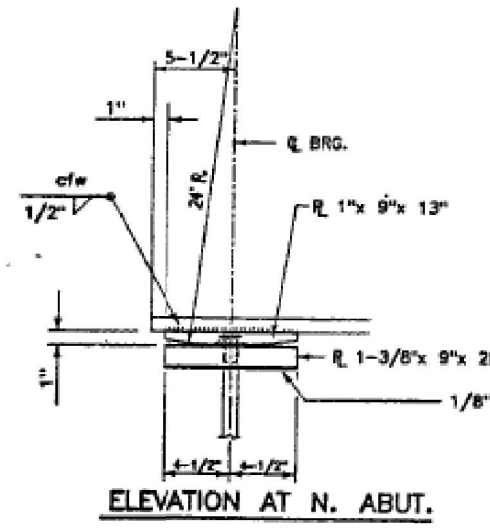
USER NAME = woodstank1	DESIGNED - RW	REVISED -
	DRAWN - RW	REVISED -
PLOT SCALE = 100,000' / in.	CHECKED - YP	REVISED -
PLOT DATE = 11/20/2021	DATE - 8/19/2021	REVISED -

STATE OF ILLINOIS
DEPARTMENT OF TRANSPORTATION

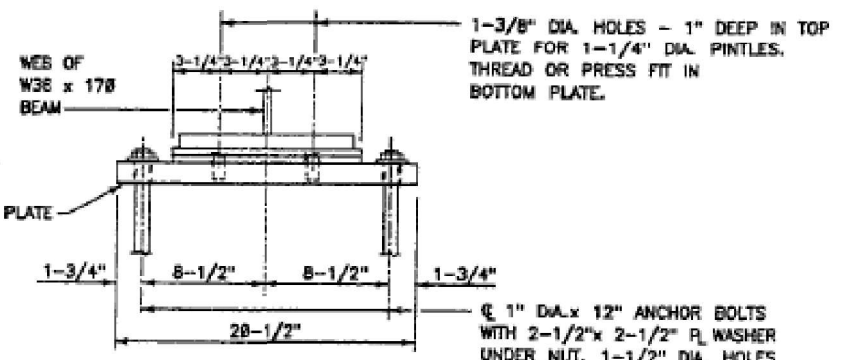
EXISTING STRUCTURE PLANS - LOCATION NO. 1
STRUCTURE NO. 027-0076

SCALE: SHEET 2 OF 4 SHEETS STA. TO STA.

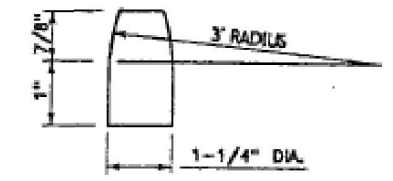
F.A. RTE.	SECTION	COUNTY	TOTAL SHEETS	SHEET NO.
VAR (114BR, 127BR-1, 127BR)BP		FORD	26	15
CONTRACT NO. 66M12			ILLINOIS FED. AID PROJECT	



ELEVATION AT N. ABUT.

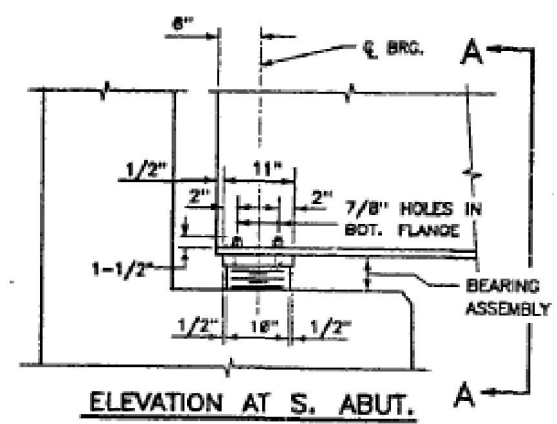


SECTION B-B
FIXED BEARING

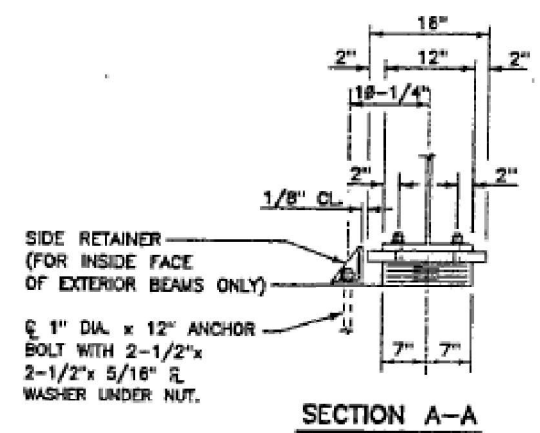


DETAIL OF PINTLE

INTERIOR BEAM MOMENT TABLE	
0.5 SPAN	
I_s (in ⁴)	18,588
I_c (in ⁴)	26,122
S_s (in ³)	588
S_c (in ³)	828
DEADLOAD (K/ft.)	.915
M_D (ft.-K)	684
S_D (K/ft.)	.328
M_L (ft.-K)	288
M_I (ft.-K)	814
Imp. (ft.-K)	196
$5/3 (M_L + I)$ (ft.-K)	1,683
M_o (ft.-K)	3,603
M_u (ft.-K)	4,468
$f_s @$ non comp (ksi)	16.63
$f_s @$ comp (ksi)	4.64
$f_s 5/3 (L + I)$ (ksi)	24.63
f_s (OVERLOAD) (ksi)	45.98
f_s (TOTAL) (ksi)	59.67
V_R (K)	52.3

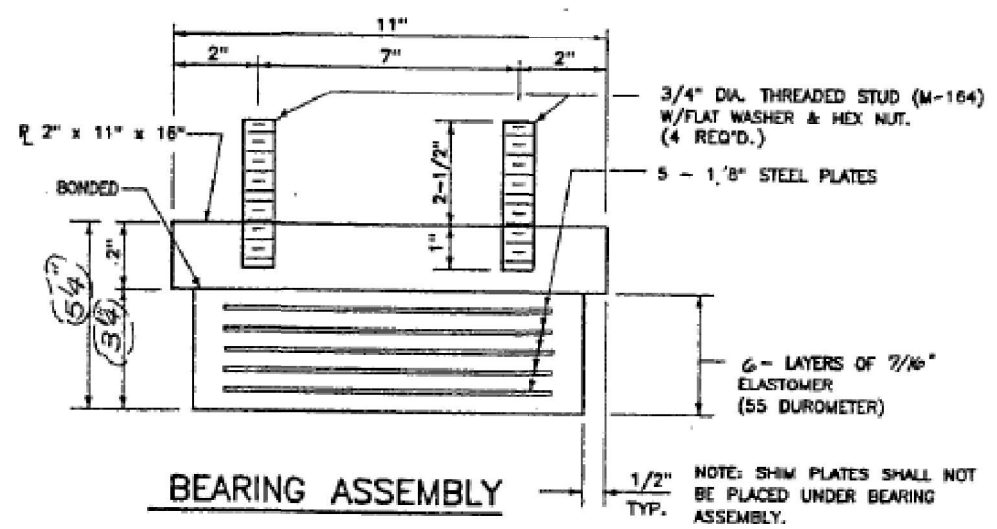


ELEVATION AT S. ABUT.

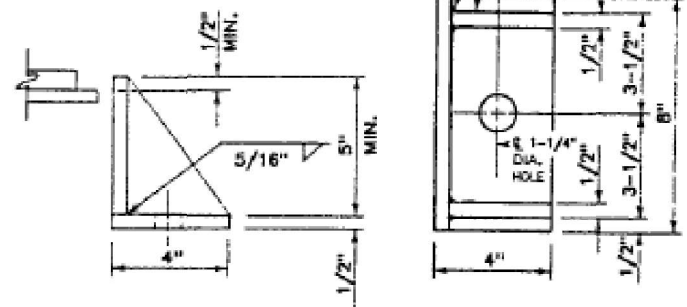


SECTION A-A

TYPE 1 ELASTOMERIC BEARING



BEARING ASSEMBLY



SIDE RETAINER

EQUIVALENT ROLLED ANGLE WITH STIFFENERS WILL BE ALLOWED IN LIEU OF WELDED PLATES

AS REVISED

I_s AND S_s ARE THE MOMENT OF INERTIA AND SECTION MODULUS OF THE STEEL SECTION USED IN COMPUTING f_s (TOTAL AND OVERLOAD).

I_c AND S_c ARE THE MOMENT OF INERTIA AND SECTION MODULUS OF THE COMPOSITE SECTION USED IN COMPUTING f_s (TOTAL AND OVERLOAD).

V_R IS THE MAXIMUM $L +$ IMPACT SHEAR RANGE IN SPAN.

THE FULLY PLASTIC MOMENT CAPACITY (M_u) IS COMPUTED ACCORDING TO AASHTO 18.45.1 & 18.58.1.1.

f_s (TOTAL) IS THE SUM OF THE STRESSES DUE TO $1.3[M_D + M_o L + 5/3 (M_L + I)]$

f_s (OVERLOAD) IS THE SUM OF THE STRESSES DUE TO $M_D + M_o L + 5/3 (M_L + I)$

M_D - MOMENT DUE TO DEAD LOADS ON NON-COMPOSITE SECTION.

$M_o L$ - MOMENT DUE TO DEAD LOADS ON COMPOSITE SECTION.

M_L - MOMENT DUE TO LIVE LOAD ON COMPOSITE SECTION.

I - LIVE LOAD IMPACT

M_o - (APPLIED MOMENT) = $1.3[M_D + M_o L + 5/3(M_L + I)]$

M_u - FULL PLASTIC MOMENT CAPACITY FOR COMPACT BRACED SECTION.

INTERIOR BEAM REACTION TABLE	
ABUTMENT	
$R(D+S_D)$ (K)	52.1
R_L (K)	42.2
IMP (K)	18.1
R total (K)	184.4

BEARING DETAILS
E. BRANCH VERMILION RIVER
F.A. RTE. 71
SECTION 114BR
STA. 141+03.00

MODEL: Default FILE NAME: p:\planning\paw\bead\paw\paw\DOT\Documents\DOT\Office\Drawings\3\Project\0366M12\0366M12 - PLANS.dwg

USER NAME = woodshank1	DESIGNED - RW	REVISED -
	DRAWN - RW	REVISED -
PLOT SCALE = 100,0000' / in.	CHECKED - YP	REVISED -
PLOT DATE = 11/20/2021	DATE - 8/19/2021	REVISED -

STATE OF ILLINOIS
DEPARTMENT OF TRANSPORTATION

EXISTING STRUCTURE PLANS - LOCATION NO. 1
STRUCTURE NO. 027-0076

SCALE: SHEET 3 OF 4 SHEETS STA. TO STA.

F.A. RTE.	SECTION	COUNTY	TOTAL SHEETS	SHEET NO.
VAR (114BR, 127BR-1, 127BR)BP	FORD	26	16	
CONTRACT NO. 66M12				
ILLINOIS FED. AID PROJECT				

FOR INFORMATION ONLY

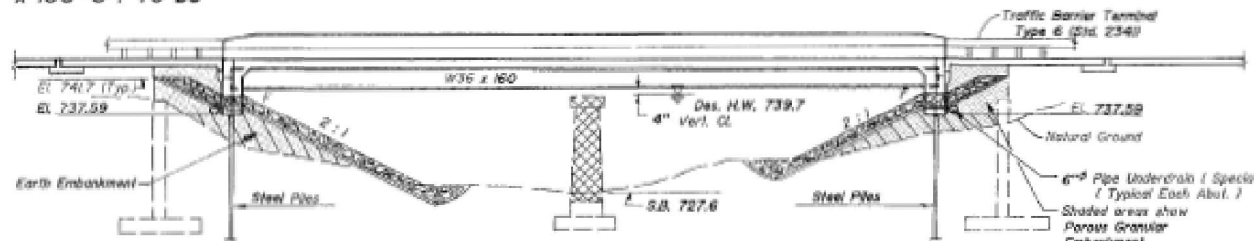
B.M. : "a" Chisled on top of SW Wingwall
16' Rt. Sta. 2366+10 Elev. 740.00 (Assumed)

STATE OF ILLINOIS
DEPARTMENT OF TRANSPORTATION

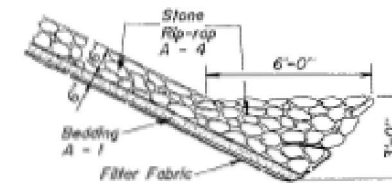
ROUTE	SECTION	COUNTY	SHEET NO.
FAP 100	127BR	FORD	14
BRIDGE SHEET NO. 5 ILLINOIS (FED. AID PROJECT)			

GENERAL NOTES

Exist. Struct. : # 027-0014. Two span R.C. girder on R.C. closed abuts. and R.C. solid pier. Bridge is approx. 26'-3" x 106'-0". To be removed. No salvage. Traffic to be detoured during construction.



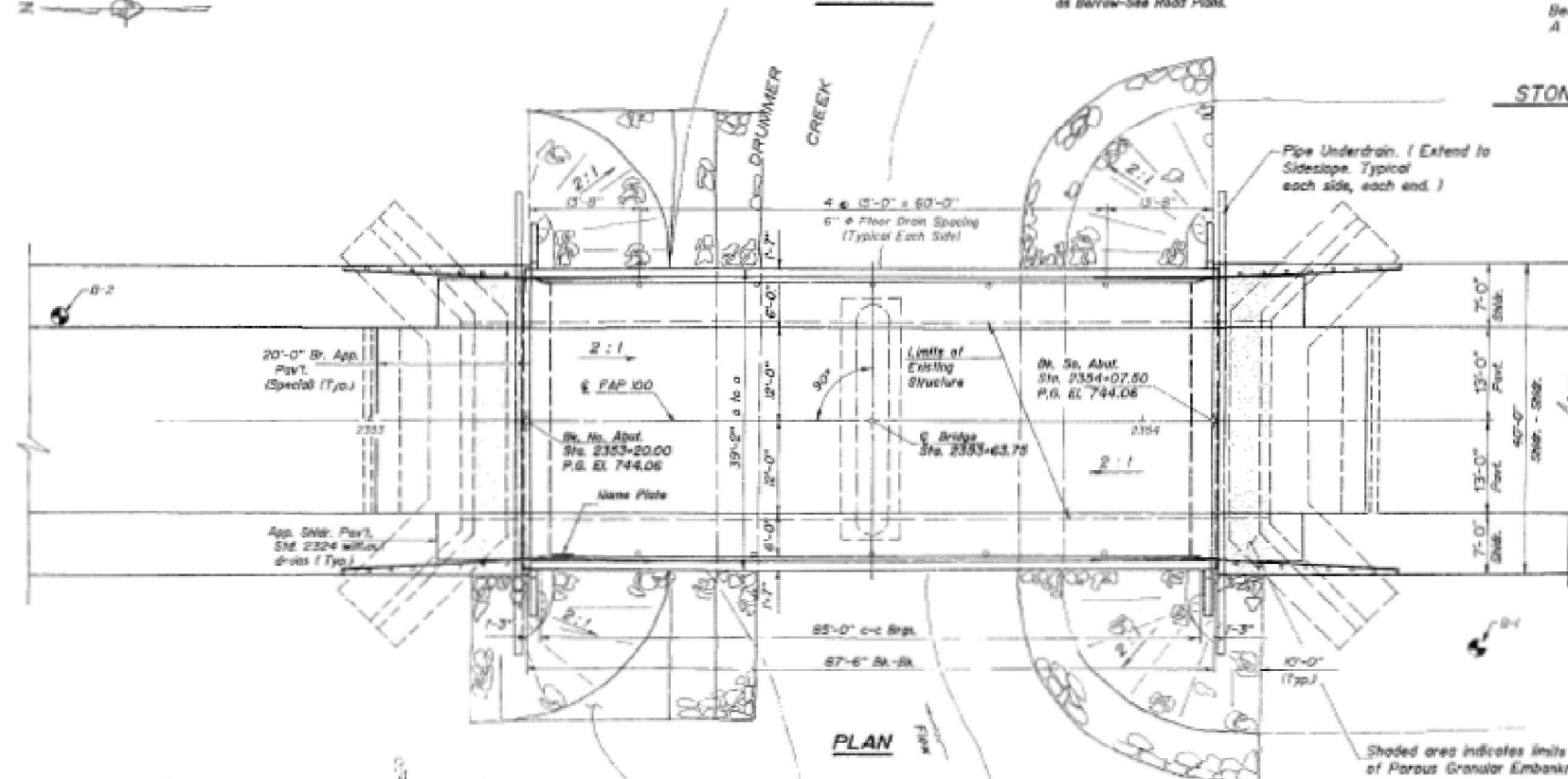
NOTE: Cross hatched area indicates portion of existing sub struct. to be removed. Hatched shaded area indicates Embankment Quantities Included as Borrow-See Road Plans.



STONE RIP-RAP ANCHOR DETAIL



ELEVATION



STA. 2353+63.75
BUILT 19__ BY
STATE OF ILLINOIS
FA 100 SEC. 127BR
LOADING HS 20
STR. NO. 027-0084

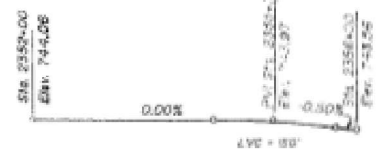
NAME PLATE
(See Std. 2113)

- (1) Fasteners shall be 1/2" strength bolts AASHTO M54.
- (2) Calculated weight of structure steel equals 87,570 lbs. (M83 4530) (M223 83,040)
- (3) The Zinc Silicate and Vinyl Paint System shall be used for shop and field painting of structural steel, except where otherwise noted.
- (4) Field welding of construction accessories will not be permitted to the bottom flange of beams. Field Welding in other areas will be permitted only when approved by the engineer.
- (5) The main load carrying member components subject to tensile stress shall conform to the supplemental requirements for Notch Toughness Zone 2. This component is the steel wide flange beam.
- (6) Reinforcement bars shall conform to the requirements of AASHTO M-31, M-42 or M-53 Grade 60.
- (7) Layout of slope protection system may be varied in the field to suit ground conditions as directed by the Engineer.
- (8) For Boring Data see sheet 8.
- (9) Contractor shall drive one (1) steel test pile at a permanent location as directed by the Engineer of each abutment prior to ordering the remainder of piles.

TOTAL BILL OF MATERIALS				
ITEM	UNIT	SUB	SUPER	TOTAL
Class X Concrete	Cu. Yd.	22.4		22.4
Class X Concrete - Superstructure	Cu. Yd.		133.2	133.2
Structural Steel, Furnishing & Erect	L. Sum		1	1
Stud Shear Connectors	Ea.		1188	1188
Reinforcement Bars	Lb.	3100	1620	4800
Reinforcement Bars (Epoxy Coated)	Lb.		22600	22600
Name Plate	Ea.		1	1
Furnishing Piles-Steel HP 10x42	Lin. Ft.	400		400
Test Piles-Steel HP 10x42	Ea.	2		2
Driving Piles-Steel	Lin. Ft.	400		400
Stone Rip-rap Class A-4	Sq. Yd.	625		625
Floor Drains	Ea.		10	10
*Protective Coat	Sq. Yd.		450	450
Remove Existing Structure	Ea.		1	1
Pipe Underdrain 6"	Lin. Ft.	120		120
Parous Granular Embankment	Cu. Yd.	120		120
Filter Fabric for use with Rip-rap	Sq. Yd.	625		625

* Includes Top of bridge deck.

PROFILE GRADE
(ALONG E. OF H.W.F.)



WATERWAY INFORMATION

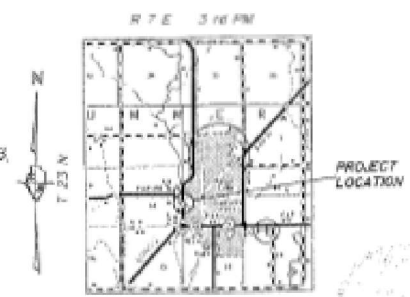
Drainage Area 19.5 Sq. Mi.		Low Grade Elev. 742.84 @ Sta. 2358+00	
Flood Yr.	Q C.F.S.	Opening Sq. Ft.	Head - Ft.
		Exist.	Prop.
Design	50	195	646
Base	100	2190	646
Overlapping			
Max. Calc.	500	2820	646

DESIGN STRESSES

$f_c = 3,500$ p.s.i.
 $f_y = 50,000$ p.s.i. (Reinf.)
 $f_y = 50,000$ p.s.i. (Str. Sl. AASHTO-M223, Grade 50)

LOADING HS20-44

Design Specifications : 1983 A.A.S.H.T.O. & subsequent interims. (1984 Thru 1988)
Allow 25 # / Sq. Ft. for future wearing surface.



LOCATION MAP

APPROVED
FOR STRUCTURAL ADEQUACY ONLY

J. W. Clark
Registered Structural Engineer

GENERAL PLAN & ELEVATION

FAP RTE 100 OVER DRUMMER CREEK
SEC. 127 BR
FORD COUNTY
STATION 2353+63.75
S.M. 027-0084

GREENE & BRADFORD, INC.
OF SPRINGFIELD
CONSULTING ENGINEERS

"FOR INFORMATION ONLY"

MODEL: Default FILE NAME: p:\projects\aw_bec\paw\paw\DOT Documents\DOT Office\Drawings\PROJECT\0366M12\0366M12-PLANS.dwg

USER NAME = woodshank1	DESIGNED - RW	REVISED -
	DRAWN - RW	REVISED -
PLOT SCALE = 100,0000' / in.	CHECKED - YP	REVISED -
PLOT DATE = 11/20/2021	DATE - 8/19/2021	REVISED -

STATE OF ILLINOIS
DEPARTMENT OF TRANSPORTATION

EXISTING STRUCTURE PLANS - LOCATION NO. 2
STRUCTURE NO. 027-0084

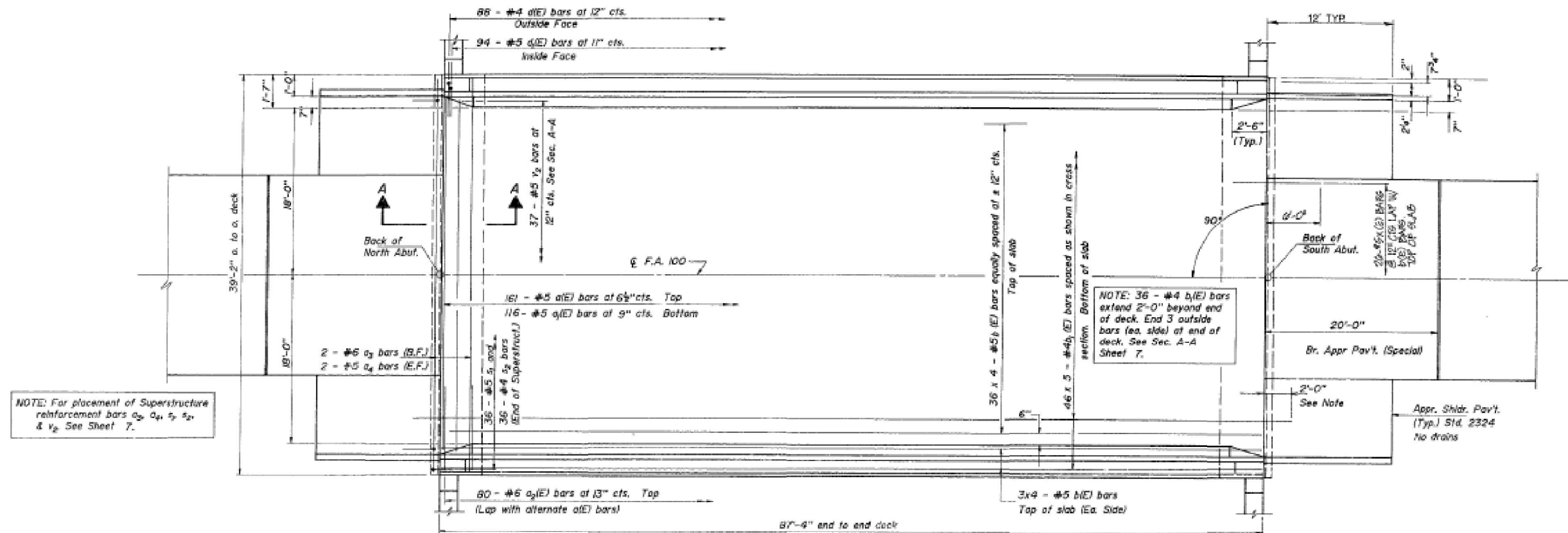
SCALE: SHEET 1 OF 4 SHEETS STA. TO STA.

F.A. RTE.	SECTION	COUNTY	TOTAL SHEETS	SHEET NO.
VAR	(114BR, 127BR-1, 127BR)BP	FORD	26	18
CONTRACT NO. 66M12				
ILLINOIS FED. AID PROJECT				

STATE OF ILLINOIS
DEPARTMENT OF TRANSPORTATION

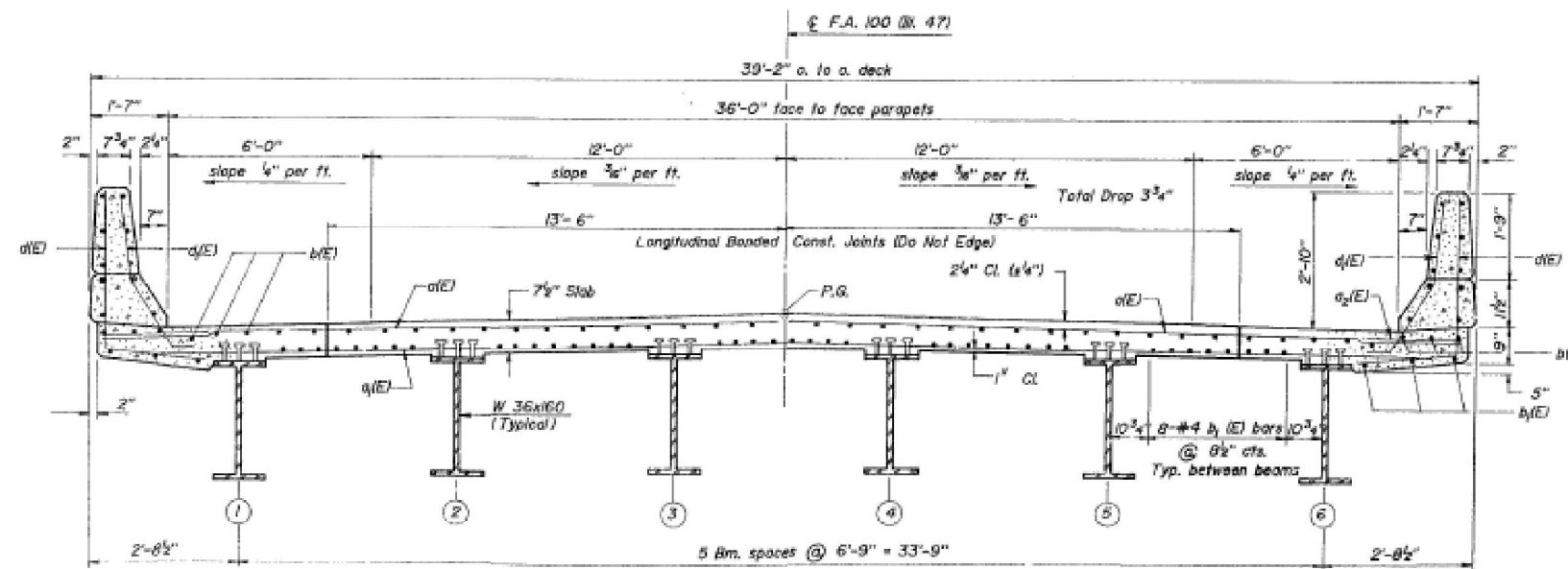
ROUTE	SECTION	COUNTY	TOTAL SHEETS	SHEET NO.
FAP 100	127BR	FORD	16	16

Bridge Sheet 3 of 9



NOTE: For placement of Superstructure reinforcement bars a3, a4, s3, s4, & v3 See Sheet 7.

PLAN



NOTES: See Sheet 4 for Superstructure Details and Bill of Material. Reinforcement bars designated (E) shall be epoxy coated. Bars shown thus, 20 x 3 #5 etc. indicates 20 lines of bars with 3 lengths per line.

MINIMUM BAR LAPS

# 4 bar	1'-4"
# 5 bar	1'-8"
# 6 bar	2'-0"
# 8 bar	3'-5"

SUPERSTRUCTURE

F.A. ROUTE 100 (LL 47) / DRUMMER CREEK
SECTION 127 BR
FORD COUNTY
SECTION 2353-63.75
S. N. 027-0084

CROSS SECTION
(Looking South)

"FOR INFORMATION ONLY"

GREENE & BRADFORD, INC.
OF SPRINGFIELD
CONSULTING ENGINEERS

USER NAME = woodshank1	DESIGNED - RW	REVISED -
	DRAWN - RW	REVISED -
PLOT SCALE = 100,0000' / in.	CHECKED - YP	REVISED -
PLOT DATE = 11/20/2021	DATE - 8/19/2021	REVISED -

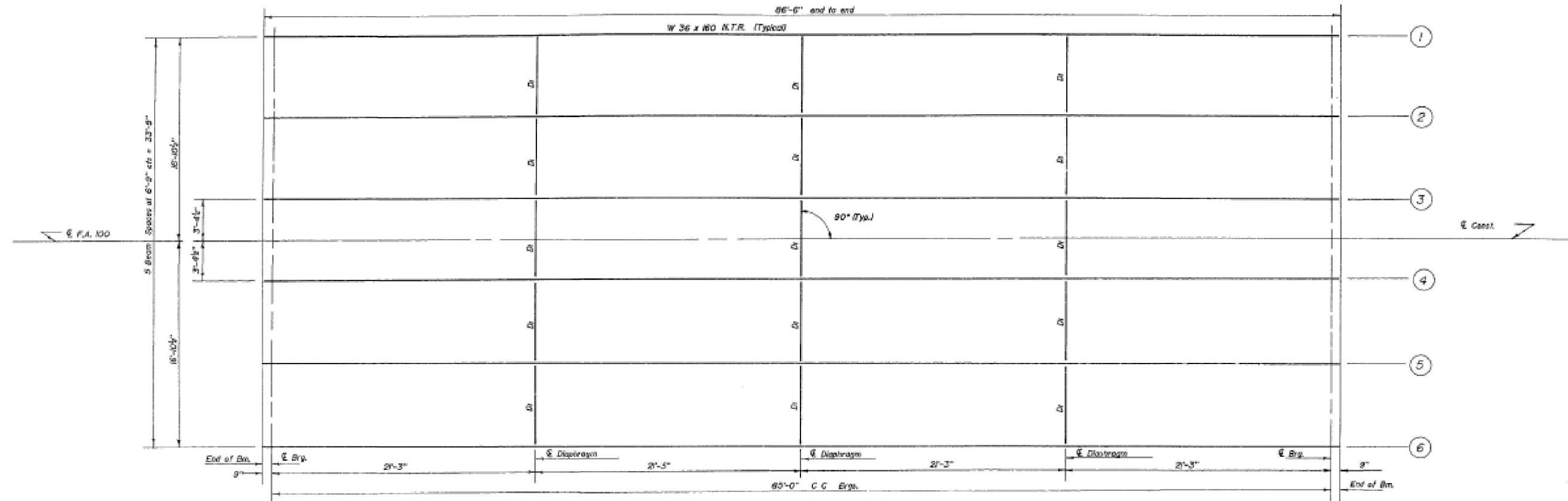
STATE OF ILLINOIS
DEPARTMENT OF TRANSPORTATION

EXISTING STRUCTURE PLANS - LOCATION NO. 2
STRUCTURE NO. 027-0084

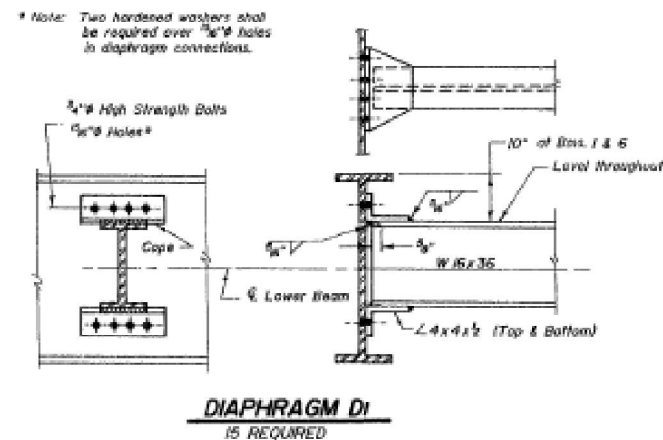
SCALE: SHEET 2 OF 4 SHEETS STA. TO STA.

F.A. RTE.	SECTION	COUNTY	TOTAL SHEETS	SHEET NO.
VAR (114BR, 127BR-1, 127BR)BP		FORD	26	19
CONTRACT NO. 66M12				
ILLINOIS FED. AID PROJECT				

MODEL: Default FILE NAME: p:\project\aw\beadefy.com\PIV\DOT\Documents\DOT Office\Drawings\31\project\0366M12\CADD\0366M12 - PLANS.dwg



FRAMING PLAN
 All Beams W36x160
 (M223 Struct. St.
 Gr. 50.)



TOP OF WF ELEVATIONS

Loc.	1	2	3	4	5	6
W. Abut.	743.10	743.23	743.34	743.34	743.23	743.10
E. Abut.	743.10	743.23	743.34	743.34	743.23	743.10

N.T.R. indicates Notch Toughness Requirement.
 See General Note 5.

STRUCTURAL STEEL

FAP RTE 100 over DRUMMER CREEK
 SEC. 127BR
 FORD COUNTY
 STATION 2353+63.75
 S.N. 027-0084

GREENE & BRADFORD, INC.
 OF SPRINGFIELD
 CONSULTING ENGINEERS

"FOR INFORMATION ONLY"

MODEL: Default
 FILE NAME: p:\project-aw-beadby.com\PROJECTS\Documents\DOT Office\Drawings\Project\0366M12\CADD\0366M12 - PLANS.dwg

USER NAME = woodshank1	DESIGNED - RW	REVISED -
	DRAWN - RW	REVISED -
PLOT SCALE = 100,0000' / in.	CHECKED - YP	REVISED -
PLOT DATE = 11/20/2021	DATE - 8/19/2021	REVISED -

STATE OF ILLINOIS
 DEPARTMENT OF TRANSPORTATION

EXISTING STRUCTURE PLANS - LOCATION NO. 2
 STRUCTURE NO. 027-0084

SCALE: SHEET 3 OF 4 SHEETS STA. TO STA.

F.A. RTE.	SECTION	COUNTY	TOTAL SHEETS	SHEET NO.
VAR	(1148R, 127BR-1, 127BR)BP	FORD	26	20
CONTRACT NO. 66M12				
ILLINOIS FED. AID PROJECT				

B.M. "d" Chisled on SW Wingwall
 Rt. Sta. 2366+10 Elev. 740.00 (Assumed)

Exist. Struct.: # 027-0015 Built 1932. Four span (simple)
 Steel I-Beam w/ R.C. Slab, solid R.C.
 Piers, & R.C. Closed Abuts.
 Approx. 215' x 24'-6", To be removed.
 No Salvage. Traffic to be detoured.

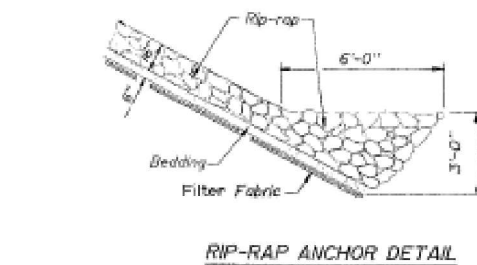
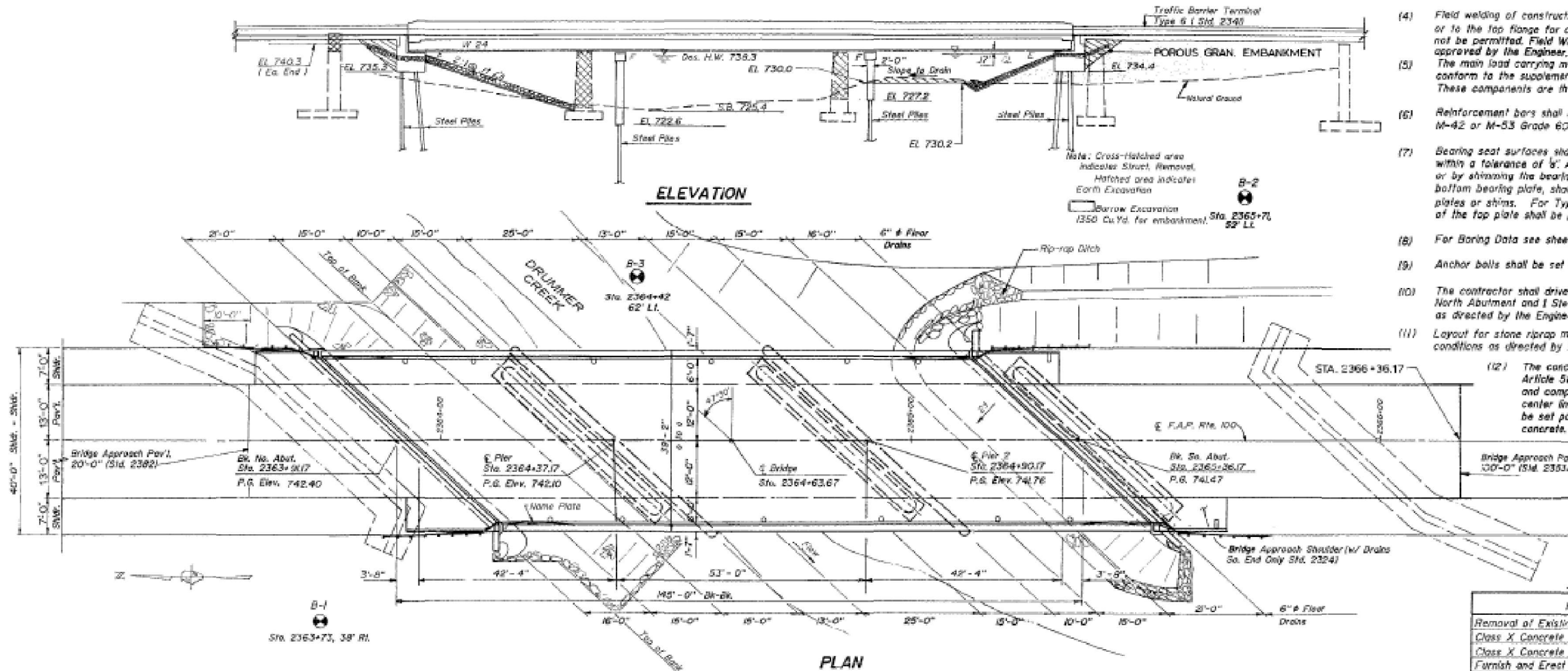
STATE OF ILLINOIS
 DEPARTMENT OF TRANSPORTATION

Bridge Sheet 1 of 15

ROUTE	SECTION	COUNTY	TOTAL SHEETS	SHEET NO.
FAP 100	127 BR-1	FORD		25
DRAWING NO. 5 ILLINOIS FED. AID PROJECT				

GENERAL NOTES

- (1) Fasteners shall be high strength bolts AASHTO M 164. Bolts 1/2", open holes 5/8", or 3/4", open holes 1", unless otherwise noted.
- (2) Calculated weight of structural steel equals 96,320 pounds.
- (3) The Zinc Silicate and Vinyl Paint System shall be used for shop and field painting of structural steel, except where otherwise noted.
- (4) Field welding of construction accessories to the bottom flange of the beams or to the top flange for a distance of 1/4 the span length from the pier will not be permitted. Field Welding in other areas will be permitted only when approved by the Engineer.
- (5) The main load carrying member components subject to tensile stress shall conform to the supplemental requirements for Notch Toughness Zone 2. These components are the steel wide flange beams and splice material.
- (6) Reinforcement bars shall conform to the requirements of AASHTO M-31, M-42 or M-53 Grade 60.
- (7) Bearing seat surfaces shall be constructed or adjusted to the design elevations within a tolerance of 1/8". Adjustments shall be made by grinding the surface, or by shimming the bearing. Two 1/2" adjusting shims, of the dimensions of the bottom bearing plate, shall be provided for each bearing in addition to all other plates or shims. For Type I Elastomeric Bearings, shims of the dimensions of the top plate shall be provided and placed as detailed.
- (8) For Boring Data see sheet No. 15.
- (9) Anchor bolts shall be set before bailing diaphragms over supports.
- (10) The contractor shall drive 1 Steel test pile in a permanent location at the North Abutment and 1 Steel test pile in a permanent location at Pier No. 2 as directed by the Engineer before ordering the remainder of piles.
- (11) Layout for stone riprap may be varied in the field to suit ground conditions as directed by the Engineer.
- (12) The concrete, for bridge floors finished in accordance with Article 503.15 of the Standard Specifications, shall be placed and compacted parallel to the skew in uniform increments along center line of bridge. The finishing machine, when required, shall be set parallel to the skew for striking off and screeding the concrete.



STA. 2364+63.67
 BUILT 19___ BY
 STATE OF ILLINOIS
 FA 100 SEC. 127BR-1
 LOADING HS 20
 STR. NO. 027-0085

NAME PLATE
 (See Std. 2113)

WATERWAY INFORMATION

Drainage Area 19.5 Sq. Mi		Low Grade Elev. 739.42 @ Sta. 2369+00							
Flood	Freq. Yr.	Q C.F.S.	Opening Sq. Ft.	Exist	Prop.	Head Ft. H.W.E.	Exist	Prop.	Headwater EL
Design	50	1915	797	745	738.3	0	0	738.3	738.3
Base	100	2190	827	779	738.7	0	0	738.7	738.7
Overlapping									
Max. Calc.	500	2820	842	823	739.4	0	0	739.4	739.4

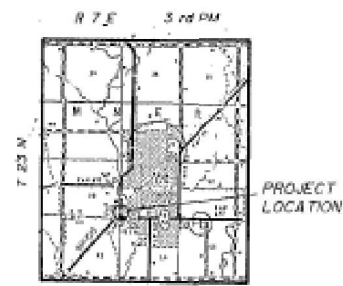
DESIGN STRESSES

$f_c = 3,500$ p.s.i.
 $f_y = 50,000$ p.s.i. (Reinf.)
 $f_y = 36,000$ p.s.i. (Str. St. M 183)

LOADING HS20-44

Design Specifications: 1983 A.A.S.H.T.O. & subsequent Interims. (Through 1986)
 Allow 25 # / Sq. Ft. for future wearing surface.

APPROVED
 FOR STRUCTURAL ADEQUACY ONLY
 John W. Clark
 Regional Structural Engineer



TOTAL BILL OF MATERIALS

ITEM	UNIT	SUB	SUPER	TOTAL
Removal of Existing Structures	Each			1
Class X Concrete	Cu. Yd.	197.3		197.3
Class X Concrete Superstructure	Cu. Yd.		171.3	171.3
Furnish and Erect Structural Steel	Lump Sum			1
Reinforcement Bars	Pound	16270		16270
Reinforcement Bars (Epoxy Coated)	Pound		39230	39230
Protective Coat	Sq. Yd.		680	680
Floor Drains	Each		12	12
Furnishing Steel Piles HP 10x42	Lin. Ft.	845		845
Furnishing Steel Piles HP 12x53	Lin. Ft.	690		690
Test Piles Steel HP 10x42	Each			1
Test Piles Steel HP 12x53	Each			1
Driving Steel Pile	Lin. Ft.	1535		1535
Name Plates	Each			1
Elastomeric Bearing Assembly Type I	Each		12	12
Neoprene Expansion Joint 2"	Lin. Ft.		112	112
Stud Shear Connectors	Each		2034	2034
Stone Riprap, Class A-4	Sq. Yd.			670
Structure Excavation	Cu. Yd.		76	76
Filter Fabric For Use With Riprap	Sq. Yd.			670
BRIDGE SEAT SEALER	LUMP SUM			1

* Includes Deck Surface
 ** SEE 204-62. FT. AT ABUTMENTS

GENERAL PLAN & ELEVATION

FAP RTE 100 over DRUMMER CREEK
 SEC. 127 BR-1
 FORD COUNTY
 STATION 2364+63.67
 S.N. 027-0085



GREENE & BRADFORD, INC.
 OF SPRINGFIELD
 CONSULTING ENGINEERS

"FOR INFORMATION ONLY"

USER NAME	DESIGNED	REVISIONS
woodshank1	RW	
	RW	
	YP	

STATE OF ILLINOIS
 DEPARTMENT OF TRANSPORTATION

EXISTING STRUCTURE PLANS - LOCATION NO. 3
 STRUCTURE NO. 027-0085

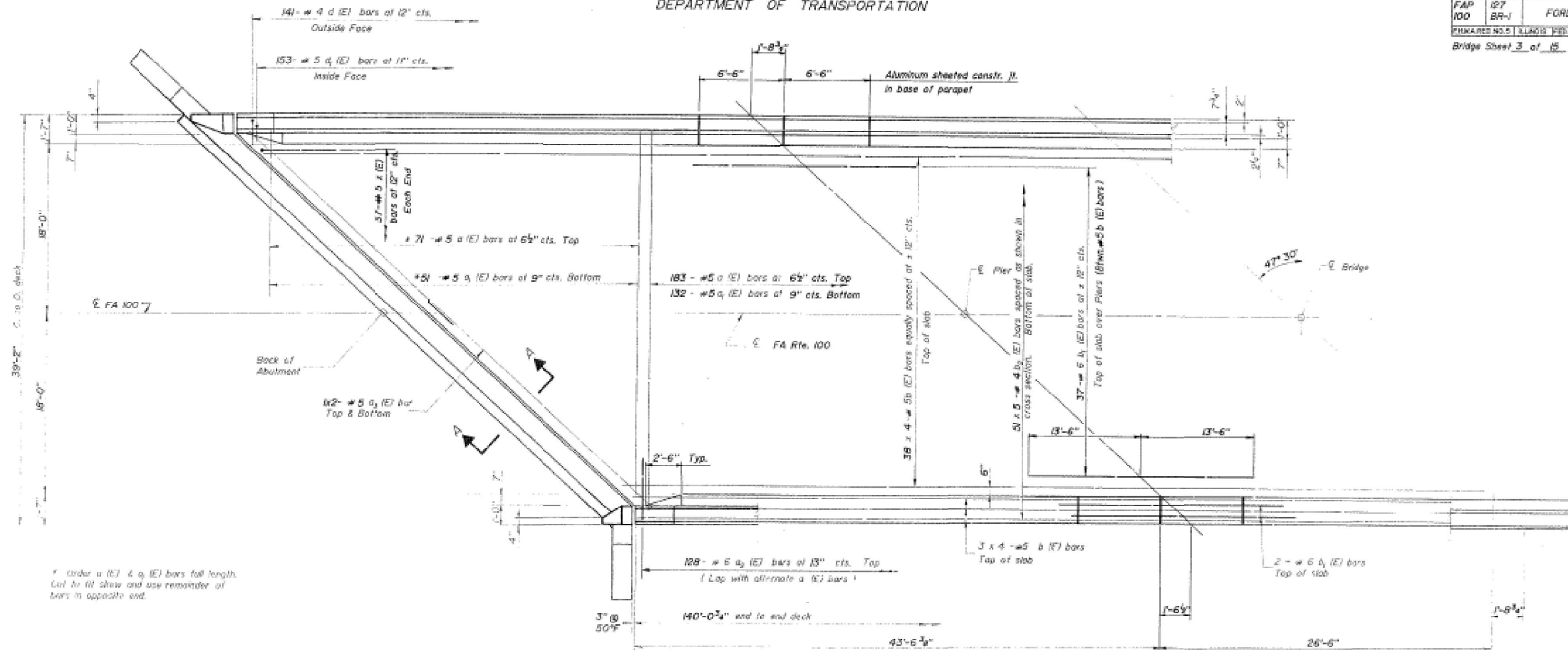
SCALE: SHEET 1 OF 5 SHEETS STA. TO STA.

F.A. RTE.	SECTION	COUNTY	TOTAL SHEETS	SHEET NO.
VAR	(114BR, 127BR-1, 127BR)BP	FORD	26	22
CONTRACT NO. 66M12				
ILLINOIS FED. AID PROJECT				

MODEL: Default
 FILE NAME: p:\projects\aw_beauford\com\p\11001\documents\1001\office\Drawings\3100\027-0085\13\000\027-0085\12... PLANS.dwg

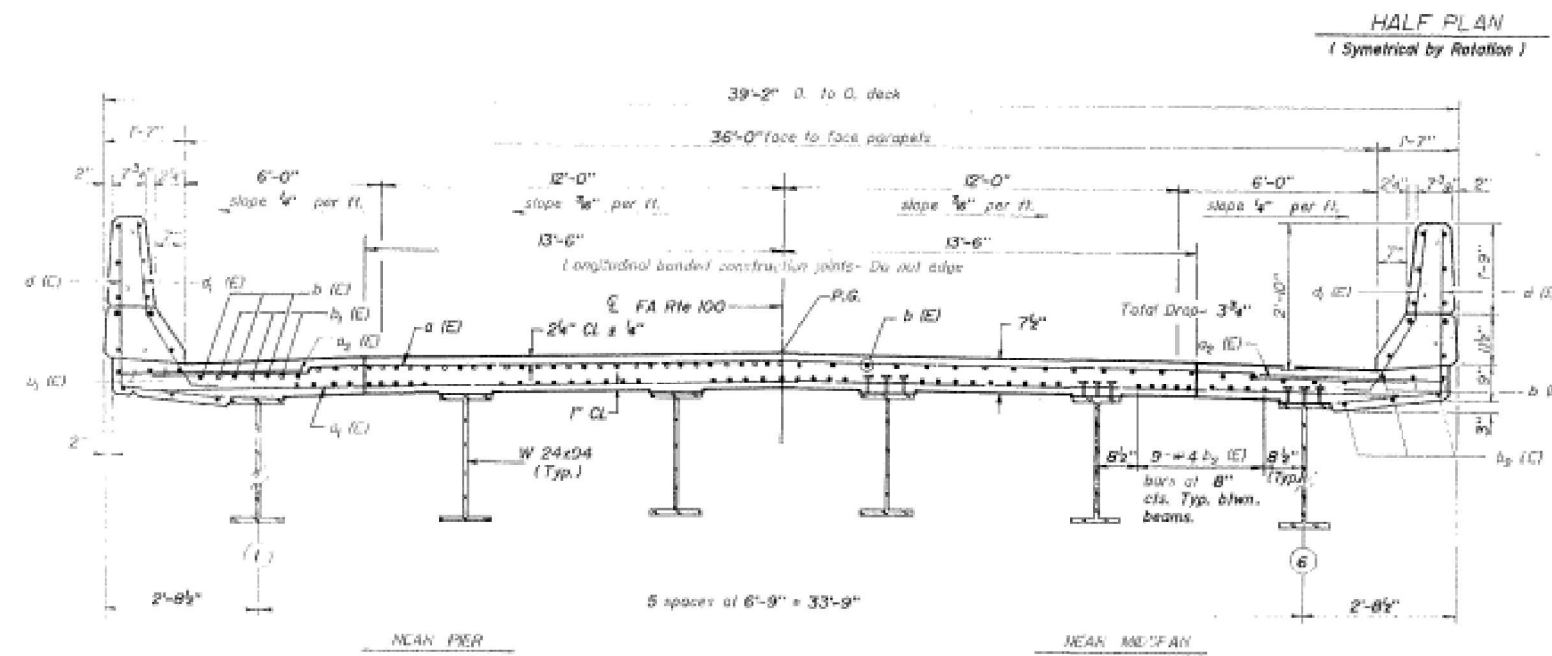
STATE OF ILLINOIS
DEPARTMENT OF TRANSPORTATION

ROUTE	SECTION	COUNTY	LOG SHEETS	SHEET NO.
FAP 100	127 BR-1	FORD		27
DRAWING NO. 11148R, 127BR-1, 127BR/BP				
BRIDGE SHEET 3 OF 15				



* Order a (E) 4 #5 (E) bars full length. Cut to fit shown and use remainder of bars in opposite end.

See Sheet M for Section A-A.



Notes: See sheet # 4 for superstructure details and Bill of Materials.
Reinforcement bars designated (E) shall be epoxy coated.
Bars shown thus 20 x 3 # 5 etc. indicate 20 ties of bars with 3 lengths per line.

Minimum Bar Laps

#4 bar	1'-4"
#5 bar	1'-8"
#6 bar	2'-0"
#8 bar	3'-5"

SUPERSTRUCTURE
FAP RTE 100 over DRUMMER CREEK
SEC. 127 BR-1
FORD COUNTY
STATION 2364+83.67
S.N. 027-0085

GREENE & BRADFORD, INC.
OF SPRINGFIELD
CONSULTING ENGINEERS

"FOR INFORMATION ONLY"

USER NAME = woodshank1	DESIGNED - RW	REVISED -
	DRAWN - RW	REVISED -
PLOT SCALE = 100,0000' / in.	CHECKED - YP	REVISED -
PLOT DATE = 11/20/2021	DATE - 8/19/2021	REVISED -

STATE OF ILLINOIS
DEPARTMENT OF TRANSPORTATION

EXISTING STRUCTURE PLANS - LOCATION NO. 3
STRUCTURE NO. 027-0085

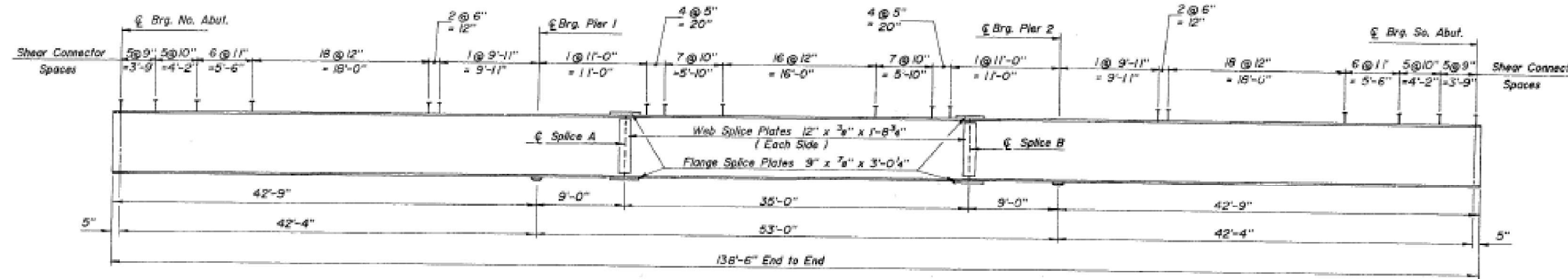
SCALE: SHEET 2 OF 5 SHEETS STA. TO STA.

F.A. RTE.	SECTION	COUNTY	TOTAL SHEETS	SHEET NO.
VAR (1148R, 127BR-1, 127BR/BP)		FORD	26	23
CONTRACT NO. 66M12				
ILLINOIS FED. AID PROJECT				

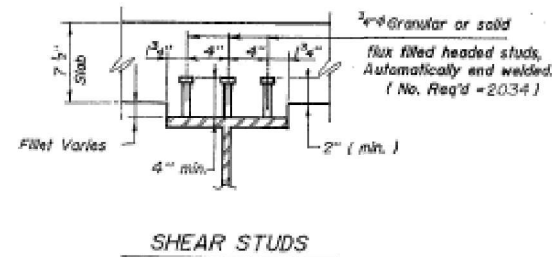
MODEL: Default
FILE NAME: p:\project\aw\locdefy.com\PIV\DOT\Documents\DOT Office\Drawings\Project\0366M12\CADD\0366M12 - PLANS.dwg

STATE OF ILLINOIS
DEPARTMENT OF TRANSPORTATION

ROUTE	SECTION	COUNTY	TOTAL SHEETS	SHEET NO.
FAP 100	127 BR-1	FORD		31
SHOWING NO. 3 ILLINOIS FEDERAL PROJECT -				
BROSE SHEET 7 OF 15				



TYPICAL BEAM ELEVATION
(All Beams W 24 x 94)



Loc. Beam	North Abut.	Pier 1	Splice A	Splice B	Pier 2	South Abut.
1	741.42	741.15	741.10	740.86	740.81	740.54
2	741.50	741.23	741.18	740.95	740.89	740.62
3	741.56	741.29	741.23	741.01	740.95	740.69
4	741.52	741.25	741.19	740.97	740.90	740.63
5	741.36	741.09	741.03	740.81	740.75	740.48
6	741.19	740.91	740.86	740.64	740.57	740.30

TOP OF WF ELEVATIONS

INTERIOR GIRDER MOMENT TABLE			
	0.4 Sp. 1	Pier	0.5 Sp. 2
I_x (in ⁴)	2700	2700	2700
I_y (in ⁴)	8625	-	8625
S_x (in ³)	222	222	222
S_y (in ³)	357	-	357
Z (in ³)	-	254	-
Q (K/ft)	.745	.745	.745
M^E (K)	91.5	-171.8	89.8
s^E (K/ft)	.304	.304	.301
M^P (K)	44.7	-51.6	55.2
M^B (K)	259.6	-355.0	298.1
M^C (K)	77.8	-40.5	89.4
M^D (K)	562.3	-292.5	645.8
M^E (K)	908.1	-670.7	1028.1
M^F (K)	141.5	-	141.5
f_s Non-comp (ksi)	5.0	-12.1	4.9
f_s comp (ksi)	1.50	-	1.8
f_s (Total) (ksi)	18.9	-15.8	21.7
f_s (Overload) (ksi)	25.4	-27.9	28.4
f_s (Total) (ksi)			
VR (K)	47.2		36.1

NOTES

I_x and S_x are the moment of inertia and section modulus of the steel section used in computing f_s (Total and Overload).
 I_y and S_y are the moment of inertia and section modulus of the composite section used in computing f_s (Total and Overload).
 VR is the maximum $h +$ Impact shear range in span.
 Z is the plastic section modulus used to determine the Fully Plastic Moments in the non-composite areas.
 The Fully Plastic Moment capacity (M_p) is computed according to AASHTO 10.48J & 10.50L.
 f_s (Total) is the sum of the stresses due to $1.3 \sqrt{M^E + S_y M^D + I}$
 f_s (Overload) is the sum of the stresses due to $M^E + S_y M^D + I$

INTERIOR GIRDER REACTION TABLE		
	Abuts.	Piers
R^E (K)	16.9	55.2
R^C (K)	38.5	44.9
Imp. (K)	11.6	12.8
R^D (K)	67.0	112.9

* M_p = Full Plastic Moment Capacity for Compact, Braced section
 ** Non-compact section
 M^D (Applied Moment) = $1.3 \sqrt{M^E + M_y^E + S_y M^D + I}$

STRUCTURAL STEEL DETAILS

FAP RTE 100 over DRUMMER CREEK
 SEC. 127 BR-1
 FORD COUNTY
 STATION 2364+63.67
 S.N. 027-0085

GREENE & BRADFORD, INC.
 OF SPRINGFIELD
 CONSULTING ENGINEERS
 805 SPRINGFIELD AVENUE, SPRINGFIELD, ILL.

"FOR INFORMATION ONLY"

MODEL: Default
 FILE NAME: p:\subsect-pw-beadefy.com\PIV\DOT\Documents\DOT Office\Drawings\3\Project\0366M12\0366M12 - PLANS.dwg

USER NAME = woodstank1	DESIGNED - RW	REVISED -
	DRAWN - RW	REVISED -
PLOT SCALE = 100,0000' / in.	CHECKED - YP	REVISED -
PLOT DATE = 11/20/2021	DATE - 8/19/2021	REVISED -

STATE OF ILLINOIS
DEPARTMENT OF TRANSPORTATION

EXISTING STRUCTURE PLANS - LOCATION NO. 3
STRUCTURE NO. 027-0085

SCALE: SHEET 4 OF 5 SHEETS STA. TO STA.

F.A. RTE.	SECTION	COUNTY	TOTAL SHEETS	SHEET NO.
VAR	(114BR, 127BR-1, 127BR)BP	FORD	26	25
CONTRACT NO. 66M12				
ILLINOIS FED. AID PROJECT				

