

F.A. RTE.	SECTION	COUNTY	TOTAL SHEETS	SHEET NO.
---	13-00117-00-SW	LAKE	10	1
FED. ROAD DIST. NO. -	ILLINOIS	CONTRACT NO. 61A65		

PLANS FOR PROPOSED FEDERAL AID HIGHWAY ROBERT McCLORY BIKE PATH

ROGER WILLIAMS AVENUE TO 500 FEET NORTH

FOR INDEX OF SHEETS, SEE SHEET NO. 2

PROJECT LOCATED IN THE CITY OF HIGHLAND PARK

DESIGN DESIGNATION: BICYCLE PATH

DESIGN SPEED: 15 M.P.H.

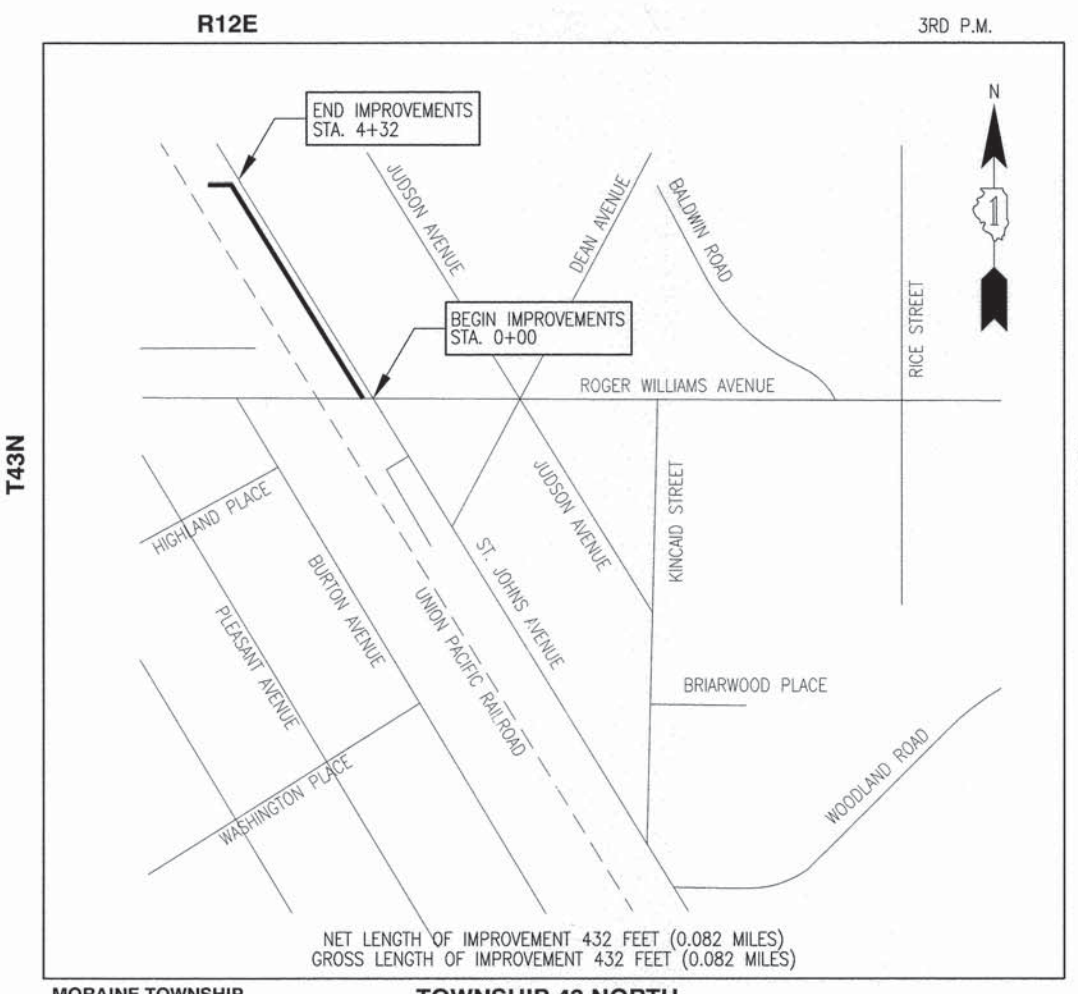
SECTION NO. 13-00117-00-SW
PROJECT NO. CMM-4003 (301)

CITY OF HIGHLAND PARK
LAKE COUNTY
JOB NO: C-91-258-14

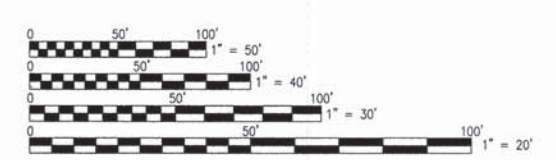
TRAFFIC DATA
DESIGN DESIGNATION - LOCAL COLLECTOR
POSTED SPEED LIMIT: 25 MPH
ADT: UNAVAILABLE

PROJECT BENCHMARK#1
PK NAIL LOCATED IN PARKING LOT
SHOWN ON SHEET 4
ELEVATION=672.75

PROJECT BENCHMARK#2
PK NAIL LOCATED ON ST. JOHNS AVENUE
SHOWN ON SHEET 4
ELEVATION=674.16



J.U.L.I.E.
FOR UNDERGROUND UTILITY LOCATION
CALL J.U.L.I.E. TOLL FREE
PHONE NO.: 811



FULL SIZE PLANS HAVE BEEN PREPARED USING STANDARD ENGINEERING SCALES.
REDUCED SIZED PLANS WILL NOT CONFORM TO STANDARD SCALES. IN MAKING
MEASUREMENTS ON REDUCED PLANS, THE ABOVE SCALES MAY BE USED.

FEDERAL AID PROGRAM ENGINEER: FAWAD AQUEEL, P.E. (847) 705-4021

CONTRACT NO. 61A65

LOCATION MAP

STATE OF ILLINOIS
DEPARTMENT OF TRANSPORTATION
DIVISION OF HIGHWAYS

Approved 10/17/2014
R. L. ...
CITY OF HIGHLAND PARK DIRECTOR OF PUBLIC WORKS

Passed 11-12-2014
C. Holt
DISTRICT #1 ENGINEER OF LOCAL ROADS AND STREETS

Releasing for Bid
Based on Limited
Review November 12, 2014
John ...
DEPUTY DIRECTOR OF HIGHWAYS, REGION #1 ENGINEER

PRINTED BY THE AUTHORITY
OF THE STATE OF ILLINOIS

Jason R. Doland
JASON R. DOLAND, P.E., P.L.S.
ILLINOIS REGISTERED PROFESSIONAL ENGINEER
NO. 062055693 (LICENSE EXPIRES 11-30-15)

PLANS PREPARED BY: DOLAND ENGINEERING, LLC.
PROFESSIONAL DESIGN FIRM NO. 184-006622




DOLAND ENGINEERING, LLC
CIVIL ENGINEERING - LAND SURVEYING - LAND PLANNING
334 EAST COLFAX STREET, SUITE C
PALATKA, ILLINOIS 60067
(847) 981-5088 (847) 934-3427 FAX
www.dolandengineering.com

1707 ST. JOHNS AVENUE
HIGHLAND PARK, ILLINOIS 60035

INDEX OF SHEETS

1	TITLE SHEET
2	INDEX OF SHEET, GENERAL NOTES, IDOT STANDARDS
3	SUMMARY OF QUANTITIES
4	EXISTING CONDITIONS & REMOVAL PLAN - ST. JOHNS AVENUE
5	SITE PLAN - ST. JOHNS AVENUE
6	GRADING PLAN - ST. JOHNS AVENUE
7	PROFILE - PROPOSED BIKE PATH
8	RETAINING WALL PLAN AND DETAILS
9	STANDARD DETAILS
10	CROSS SECTIONS

LEGEND

	EXISTING MANHOLE
	EXISTING LIGHT POLE
	EXISTING TRAFFIC SIGN
	EXISTING FIRE HYDRANT
	EXISTING CATCHBASIN
	EXISTING CONTOUR
	EXISTING UTILITY POLE
	EXISTING FENCE
	EXISTING TREE

IDOT STANDARDS

000001-06	STANDARD SYMBOLS, ABBREVIATIONS AND PATTERNS
606001-06	CONCRETE CURB TYPE B AND COMBINATION CONCRETE CURB AND GUTTER
701006-05	OFF-RD OPERATIONS, 2L, 2W, 15' (4-5m) TO 24" (600mm) FROM PAVEMENT EDGE
701501-06	URBAN LANE CLOSURE, 2L, 2W, UNDIVIDED
701801-05	SIDEWALK, CORNER OR CROSSWALK CLOSURE
701901-04	TRAFFIC CONTROL DEVICES
720001-01	SIGN PANEL MOUNTING DETAILS
720006-04	SIGN PANEL ERECTION DETAILS
720011-01	METAL POSTS FOR SIGNS, MARKERS AND DELINEATORS
729001-01	APPLICATIONS OF TYPE A AND B METAL POSTS (FOR SIGNS AND MARKERS)

GENERAL NOTES

GENERAL NOTES:
BEFORE STARTING ANY EXCAVATION, THE CONTRACTOR SHALL CALL "JULIE" AT 811 FOR FIELD LOCATIONS OF BURIED UTILITY FACILITIES. (48 HOURS NOTIFICATION IS REQUIRED).

SPECIFICATIONS:
ALL CONSTRUCTION SHALL BE DONE IN ACCORDANCE WITH THE "STANDARD SPECIFICATIONS FOR ROAD AND BRIDGE CONSTRUCTION", ADOPTED JANUARY 1, 2014. THE MANUAL ON UNIFORM TRAFFIC CONTROL DEVICES FOR STREET AND HIGHWAYS", LATEST EDITION, THE DETAILS INCLUDED IN THE PLANS, AND THE SPECIAL PROVISIONS INCLUDED IN THE CONTRACT DOCUMENTS.

STANDARDS:
ANY REFERENCE TO "STANDARDS" THROUGHOUT THE PLANS OR SPECIAL PROVISIONS SHALL BE INTERPRETED TO BE THE LATEST STANDARD OF IDOT AS LISTED ON THIS SHEET.

COORDINATION:
THE CONTRACTOR SHALL NOTIFY THE CITY OF HIGHLAND PARK AT LEAST 48 HOURS IN ADVANCE OF BEGINNING WORK, AND SHALL COORDINATE ALL CONSTRUCTION OPERATIONS WITH THE ENGINEER.

PUBLIC OR PRIVATE UTILITIES:
THE LOCATIONS OF PUBLIC OR PRIVATE UTILITIES SHOWN ON THE PLANS ARE APPROXIMATE, AND THE DISTRICT DOES NOT GUARANTEE THEIR ACCURACY. THE CONTRACTOR SHALL BE REQUIRED TO ASCERTAIN THE EXACT LOCATIONS OF SUCH UTILITIES AND EXERCISE CARE DURING CONSTRUCTION OPERATIONS SO AS NOT TO DAMAGE THEM, IN ACCORDANCE WITH THE SPECIAL PROVISIONS AND ARTICLE 107.20 OF THE "STANDARD SPECIFICATIONS". THE CONTRACTOR SHALL BE RESPONSIBLE FOR CONTACTING THE UTILITY OWNERS SO THAT THEIR FACILITIES MAY BE ADJUSTED OR RELOCATED, IF NECESSARY, PRIOR TO THE START OF CONSTRUCTION OPERATIONS UNLESS OTHERWISE NOTED IN THE PLANS. ALL RELOCATION WORK ON EXISTING PRIVATE UTILITIES WILL BE DONE BY THE OWNER OF THAT UTILITY.

THE CONTRACTOR SHALL BE RESPONSIBLE FOR ANY DAMAGE OR DESTRUCTION OF PUBLIC OR PRIVATE PROPERTY, AND SHALL RESTORE SUCH PROPERTY AT HIS/HER EXPENSE.

SURVEY AND MONUMENTS:
ALL ELEVATIONS IN THE PLANS ARE BASED UPON THE NORTH AMERICAN VERTICAL DATUM OF 1988 (NAVD88)

THE CONTRACTOR SHALL PROTECT AND CAREFULLY PRESERVE ALL PROPERTY CORNERS, SECTION OR SUBSECTION MONUMENTS OR PROPERTY OR REFERENCE MARKERS UNTIL THE OWNER, HIS AGENT OR AN AUTHORIZED SURVEYOR HAS WITNESSED OR OTHERWISE REFERENCED THEIR LOCATIONS.

WHERE MONUMENTS ARE ENCOUNTERED, THE ENGINEER SHALL BE NOTIFIED BEFORE MONUMENTS ARE REMOVED.

DISPOSAL OF MATERIALS:
THERE WILL BE NO SPECIAL WASTE REMOVAL NECESSARY TO CONSTRUCT THIS PROJECT.

EXISTING DRAINAGE STRUCTURES:
DURING CONSTRUCTION OPERATIONS, WHENEVER ANY LOOSE MATERIAL IS DEPOSITED IN THE FLOW LINE OF DRAINAGE STRUCTURES, SUCH THAT THE NATURAL FLOW OF WATER IS OBSTRUCTED, IT SHALL BE REMOVED BY THE CONTRACTOR AT THE CLOSE OF EACH WORKING DAY. AT THE CONCLUSION OF CONSTRUCTION OPERATIONS, ALL DRAINAGE STRUCTURES SHALL BE FREE FROM DIRT AND DEBRIS. THE WORK SPECIFIED ABOVE WILL NOT BE PAID FOR SEPARATELY, BUT SHALL BE CONSIDERED AS INCLUDED IN THE COST OF THE CONTRACT PAY ITEM FOR EARTH EXCAVATION.

WHEN EXISTING DRAINAGE FACILITIES ARE DISTURBED, THE CONTRACTOR SHALL PROVIDE AND MAINTAIN TEMPORARY OUTLETS AND CONNECTIONS FOR ALL PRIVATE OR PUBLIC DRAINS, SEWERS OR CATCH BASINS. CONTRACTOR SHALL PROVIDE FACILITIES TO TAKE IN ALL STORM WATER WHICH WILL BE RECEIVED BY THESE DRAINS AND SEWERS, AND DISCHARGE SAME. CONTRACTOR SHALL PROVIDE AND MAINTAIN AN EFFICIENT PUMPING PLANT, IF NECESSARY, AND A TEMPORARY OUTLET, AND BE PREPARED AT ALL TIMES TO DISPOSE OF THE WATER RECEIVED FROM THESE TEMPORARY CONNECTIONS UNTIL SUCH TIME AS THE PERMANENT CONNECTIONS WITH SEWERS ARE BUILT AND IN SERVICE. THIS WORK WILL NOT BE PAID FOR DIRECTLY, BUT SHALL BE CONSIDERED INCLUDED IN THE CONTRACT PAY ITEM FOR EARTH EXCAVATION. BEFORE ORDERING PIPE CULVERTS, THE CONTRACTOR SHALL CONTACT THE ENGINEER AS TO THE EXACT LENGTH AND QUANTITY REQUIRED.

UNSUITABLE MATERIAL:
BEFORE REMOVAL OF ANY UNSUITABLE MATERIAL, THE CONTRACTOR SHALL TREAT THE SUBGRADE AS PER ARTICLE 301.03 OF THE "STANDARD SPECIFICATIONS" TO THE SATISFACTION OF THE ENGINEER. UNSUITABLE MATERIAL SHALL NOT BE USED AS EMBANKMENT OR FILL UNDER THE PROPOSED TRAIL AS SHOWN ON THE TYPICAL CROSS SECTIONS.

STOCKPILES:
STOCKPILES OF TOPSOIL AND OTHER MATERIALS SHALL NOT BE LOCATED WITH A SPECIAL MANAGEMENT AREA. APPROVAL OF THE LOCATION MUST BE OBTAINED FROM THE ENGINEER PRIOR TO PLACEMENT. IF A STOCKPILE IS TO REMAIN IN PLACE FOR MORE THAN THREE DAYS, EROSION CONTROL MEASURES SHALL BE PROVIDED. STOCKPILES TO REMAIN IN PLACE FOR 30 DAYS OR MORE SHALL RECEIVE TEMPORARY SEEDING.

TREE TRIMMING:
ALL BRANCHES THAT ARE LESS THAN 12 FEET ABOVE THE SURFACE OF THE TRAIL SHALL BE REMOVED BY THE CONTRACTOR. THE CONTRACTOR SHALL PERFORM THE WORK IN ACCORDANCE WITH ANSI STANDARD A300-2001 (PART 1) FOR TREE, SHRUB AND OTHER WOODY PLANT MAINTENANCE AND ANSI Z133.1-1994 FOR TREE CARE OPERATIONS PRUNING, TRIMMING, REPAIRING, MAINTAINING AND REMOVING TREES AND CUTTING BRUSH. THIS WORK SHALL BE NOT BE PAID FOR SEPARATELY, BUT SHALL BE INCLUDED IN THE COST OF TREE REMOVAL.

ACCESS TO PROPERTY:
THE CONTRACTOR SHALL MAINTAIN ACCESS TO ABUTTING PROPERTY DURING CONSTRUCTION OF THIS PROJECT, EXCEPT FOR PERIODS OF SHORT DURATION AS APPROVED BY THE ENGINEER, SEE NOTE ON SHEET 4.

SAW CUTTING:
THE LIMITS OF REMOVAL OF ALL CONCRETE OR BITUMINOUS PAVEMENTS, CURBING OR SIDEWALKS SHALL BE SAWCUT IN ACCORDANCE WITH SECTION 440 OF THE "STANDARD SPECIFICATIONS" AND AT THE DIRECTION OF THE ENGINEER. THE SAW CUTTING OF BITUMINOUS PAVEMENT, DRIVEWAYS, CURBS OR SIDEWALK SHALL BE INCLUDED IN THE COST OF THE ITEM BEING REMOVED.

RESTORATION:
GRASS AREAS DISTURBED DURING CONSTRUCTION SHALL BE RESTORED WITH SIX INCHES OF TOPSOIL AND SOD.

SEDIMENTATION AND EROSION CONTROL NOTES:
A) SOIL DISTURBANCE SHALL BE CONDUCTED IN SUCH A MANNER AS TO MINIMIZE EROSION. SOIL STABILIZATION MEASURES SHALL CONSIDER THE TIME OF YEAR, SITE CONDITIONS AND THE USE OF TEMPORARY OR PERMANENT MEASURES.
B) SOIL EROSION AND SEDIMENT CONTROL FEATURES SHALL BE CONSTRUCTED PRIOR TO THE COMMENCEMENT OF UPLAND DISTURBANCE.
C) TEMPORARY SOIL STABILIZATION SHALL BE APPLIED TO DISTURBED AREAS WITH 14 CALENDAR DAYS OF THE END OF ACTIVE HYDROLOGIC DISTURBANCE. PERMANENT STABILIZATION SHALL BE DONE WITHIN 14 DAYS AFTER COMPLETION OF FINAL GRADING.
D) ALL STORM SEWER FACILITIES THAT ARE OR WILL BE FUNCTIONING DURING CONSTRUCTION SHALL BE PROTECTED, FILTERED, OR OTHERWISE TREATED TO REMOVE SEDIMENT.
E) ALL TEMPORARY EROSION AND SEDIMENT CONTROL MEASURES SHALL BE REMOVED WITHIN 30 DAYS OF FINAL SITE STABILIZATION OR AFTER THE TEMPORARY MEASURES ARE NO LONGER NEEDED. TRAPPED SEDIMENT AND OTHER DISTURBED SOIL AREAS SHALL BE PERMANENTLY STABILIZED.
F) ALL TEMPORARY AND PERMANENT EROSION CONTROL MEASURES SHALL BE MAINTAINED AND REPAIRED AS NEEDED. THE CONTRACTOR SHALL BE RESPONSIBLE FOR INSPECTION AND REPAIR DURING CONSTRUCTION.
G) THE EROSION CONTROL MEASURES INDICATED ON THE PLANS OR AS DIRECTED BY THE ENGINEER ARE THE MINIMUM REQUIREMENTS. ADDITIONAL MEASURES MAY BE REQUIRED, AS DIRECTED BY THE ENGINEER.
H) THE CONTRACTOR SHALL INSTALL ALL EROSION CONTROL PRIOR TO THE START OF ANY EARTHWORK.
I) IF A STOCKPILE IS TO REMAIN IN PLACE FOR MORE THAN THREE DAYS, EROSION CONTROL MEASURES SHALL BE PROVIDED BY THE CONTRACTOR.
J) EROSION CONTROL MEASURES SHALL COMPLY WITH THE MINIMUM REQUIREMENTS OF THE LAKE COUNTY STORMWATER AND FLOODPLAIN ORDINANCE SPECIFICATIONS AT ALL TIMES.

ALL WORK PERFORMED UNDER THIS IMPROVEMENT SHALL BE GUARANTEED TO THE LOCAL AUTHORITY BY THE CONTRACTOR AND HIS SURETY FOR A PERIOD OF 18 MONTHS AFTER FINAL PAYMENT HAS BEEN MADE, TO ENSURE WORK AND MATERIALS BE COMPLETE AND FREE OF ALL DEFECTS IN WORKMANSHIP AND MATERIALS, OF WHATEVER NATURE.

SUMMARY OF QUANTITIES

CONSTRUCTION TYPE CODE
80% FEDERAL - 20% VILLAGE
FACILITIES FOR
BICYCLE/PEDESTRIAN TRAILS
0028

SPECIALITY ITEM	CODE NO.	ITEM DESCRIPTION	UNIT	TOTAL QUANTITY
	20100110	TREE REMOVAL (6-15 UNITS)	UNIT	1
*	20101700	SUPPLEMENTAL WATERING	UNIT	9
	20200100	EARTH EXCAVATION	CU YD	20
	21001000	GEOTECHNICAL FABRIC FOR GROUND STABILIZATION	SQ YD	300
*	21101600	TOPSOIL FURNISH AND PLACE, VARIABLE DEPTH	SQ YD	400
*	25200110	SODDING, SALT TOLERANT	SQ YD	400
	35101600	AGGREGATE BASE COURSE, TYPE B 4"	SQ YD	76
	35102000	AGGREGATE BASE COURSE, TYPE B 8"	SQ YD	435
	40600275	BITUMINOUS MATERIALS (PRIME COAT)	POUNDS	1,150
	40603335	HOT-MIX ASPHALT SURFACE COURSE, MIX 'D', N50	TON	50
	42300200	PORTLAND CEMENT CONCRETE DRIVEWAY PAVEMENT, 6 INCH	SQ YD	76
	42400800	DETECTABLE WARNINGS	SQ FT	30
	44000200	DRIVEWAY PAVEMENT REMOVAL	SQ YD	125
	44000500	COMBINATION CURB AND GUTTER REMOVAL	FOOT	100
	44000600	SIDEWALK REMOVAL	SQ FT	110
*	50901720	BICYCLE RAILING	FOOT	185
	60603800	COMBINATION CURB AND GUTTER TYPE B-6.12	FOOT	100

CONSTRUCTION TYPE CODE
80% FEDERAL - 20% VILLAGE
FACILITIES FOR
BICYCLE/PEDESTRIAN TRAILS
0028

SPECIALITY ITEM	CODE NO.	ITEM DESCRIPTION	UNIT	TOTAL QUANTITY
	67100100	MOBILIZATION	L SUM	1
	70102620	TRAFFIC CONTROL AND PROTECTION, STANDARD 701501	L SUM	1
	70102640	TRAFFIC CONTROL AND PROTECTION, STANDARD 701801	L SUM	1
	72000100	SIGN PANEL-TYPE 1	SQ FT	6
	72900100	METAL POST-TYPE A	FT	30
*	78006150	PREFORMED THERMOPLASTIC PAVEMENT MARKING-LINE 12"	FT	120
	78300100	PAVEMENT MARKING REMOVAL	SQ FT	60
*	A2002024	TREE, AESCULUS GLABRA (OHIO BUCKEYE), 3" CALIPER, BALLED AND BURLAPPED	EACH	2
*	A2002720	TREE, CARYA OVATA (SHAGBARK HICKORY), 2-1/2" CALIPER, BALLED AND BURLAPPED	EACH	2
*	A2005120	TREE, JUGLANS NIGRA (BLACK WALNUT), 2-1/2" CALIPER, BALLED AND BURLAPPED	EACH	2
*	A2006726	TREE, QUERCUS MACROCARPA (BUR OAK), 3" CALIPER, BALLED AND BURLAPPED	EACH	2
*	A2008457	TREE, ULMUS ACCOLADAE (HYBRID ELM), 4" CALIPER, BALLED AND BURLAPPED	EACH	2
	X0327036	BIKE PATH REMOVAL	SQ YD	27
	X4240440	PORTLAND CEMENT CONCRETE SIDEWALK 6 INCH, SPECIAL	SQ FT	1,480
	Z0013302	SEGMENTAL CONCRETE BLOCK WALL	SQ FT	1,200
	Z0022800	FENCE REMOVAL	FOOT	30



REMOVE 27 S.Y. OF EXISTING GRAVEL BIKE PATH
RESTORE AREA w/ 6" TOPSOIL & SOD.

REMOVE 3 FENCES

NOTE:
CONTRACTOR SHALL PROVIDE
ADEQUATE PROTECTION FOR AND
AROUND EXISTING LIGHT POLES,
WHICH ARE TO REMAIN. (TYP.)

DENOTES TREE TO BE REMOVED INCLUDING STUMP REMOVAL
TREES TO BE REPLACE AT 1:1 RATIO
PER CALIPER INCH

NOTE:
SIGNS, BARRICADES AND "DRIVEWAY CLOSURE" NOTICE
FOR DRIVEWAY CONSTRUCTION SHALL BE INCLUDED
WITH THE PAY ITEM FOR TRAFFIC CONTROL AND
PROTECTION, STANDARD 701501.

UNION PACIFIC RAILROAD

ST. JOHNS AVENUE

ROGER WILLIAMS AVENUE

PROJECT BENCHMARK #1
PK. NAIL
ELE.=672.75

PROJECT BENCHMARK #2
PK. NAIL
ELE.=674.16

REMOVE EXISTING P.C.T.S. SIDEWALK
FOR DETECTABLE WARNINGS

REMOVE AND TRANSPLANT, 3" DIA. HONEY LOCUST TREE
WITHIN PROJECT LIMITS, AS DIRECTED BY CITY FORESTER.

REMOVE EXISTING SIDEWALK & REPLACE WITH SOD
(BY OTHERS)

REMOVE EXISTING "CROSSWALK" SIGN
(BY OTHERS)

REMOVE EXISTING SIDEWALK (AND ROAD PAVEMENT MARKINGS)

REMOVE AND REPLACE DRIVEWAY
SEE SITE PLAN FOR DETAILS

EXISTING CONCRETE WALK

EXISTING CROSSWALK TO REMAIN

MATCH EXISTING EAST/WEST CROSSWALK
PAVEMENT MARKINGS (TC-13)

DOLAND
ENGINEERING, LLC
CIVIL ENGINEERING - LAND DEVELOPMENT - LAND PLANNING
334 EAST COLFAX STREET, SUITE C
PALATKA, ILLINOIS 60130
(815) 381-5000 (815) 384-3422 FAX
www.dolandengineering.com

USER NAME:	DESIGNED:	REVISED: 4/25 - PRE. ENGINEERING
PLOT SCALE:	DRAWN:	REVISED: 5/1 - PRE. FINAL PLANS SUBMITTAL
PLOT DATE:	CHECKED:	REVISED: 7/1 PER REVIEW
	DATE:	REVISED:

STATE OF ILLINOIS
DEPARTMENT OF TRANSPORTATION

ROBERT McCLORY BIKE PATH
EXISTING CONDITIONS AND REMOVAL PLAN

SCALE: 1" = 20' SHEET NO. 4 OF 10 SHEETS STA. STA.

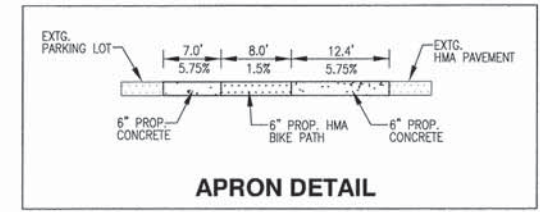
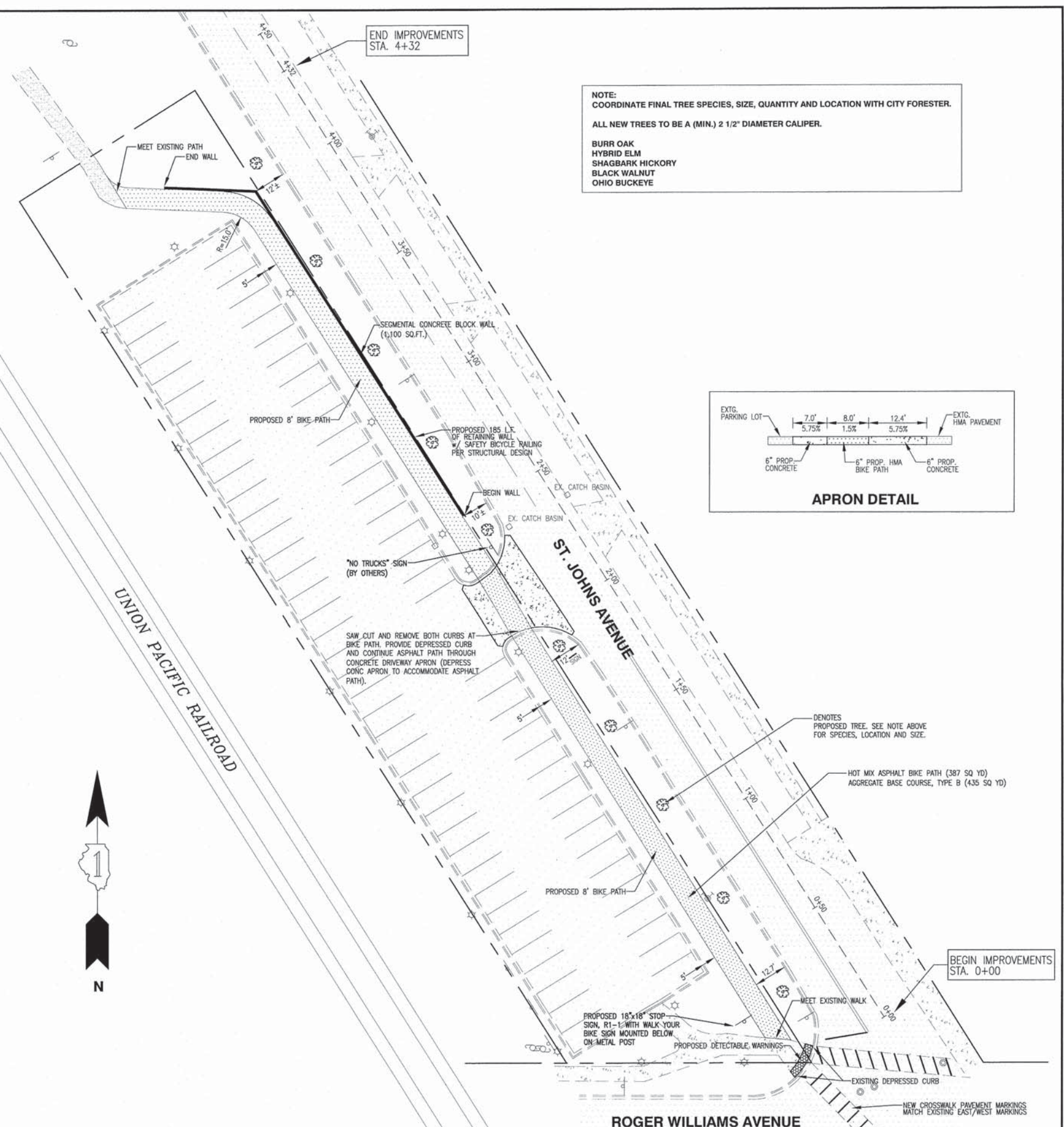
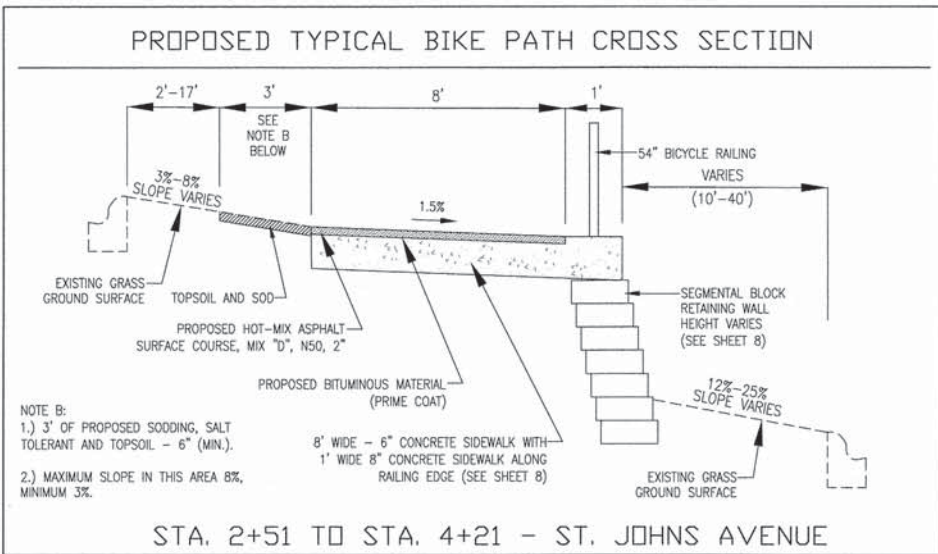
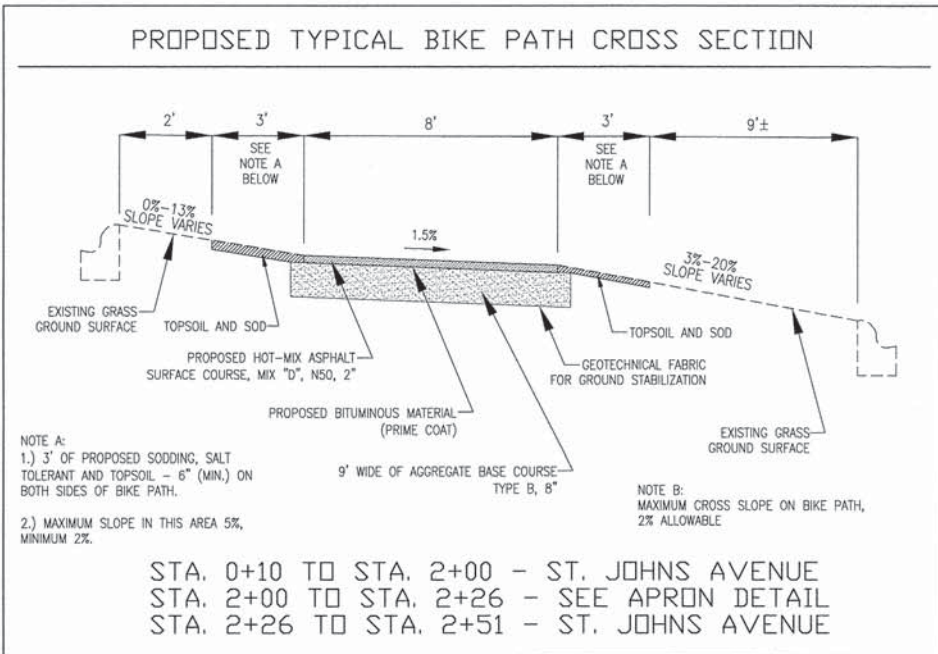
F.A. RTE.	SECTION	COUNTY	TOTAL SHEETS	SHEET NO.
---	13-00117-00-SW	LAKE	10	4
FED. ROAD DIST. NO. -	ILLINOIS CONTRACT NO. 61A65			

HOT-MIX ASPHALT MIXTURE REQUIREMENTS

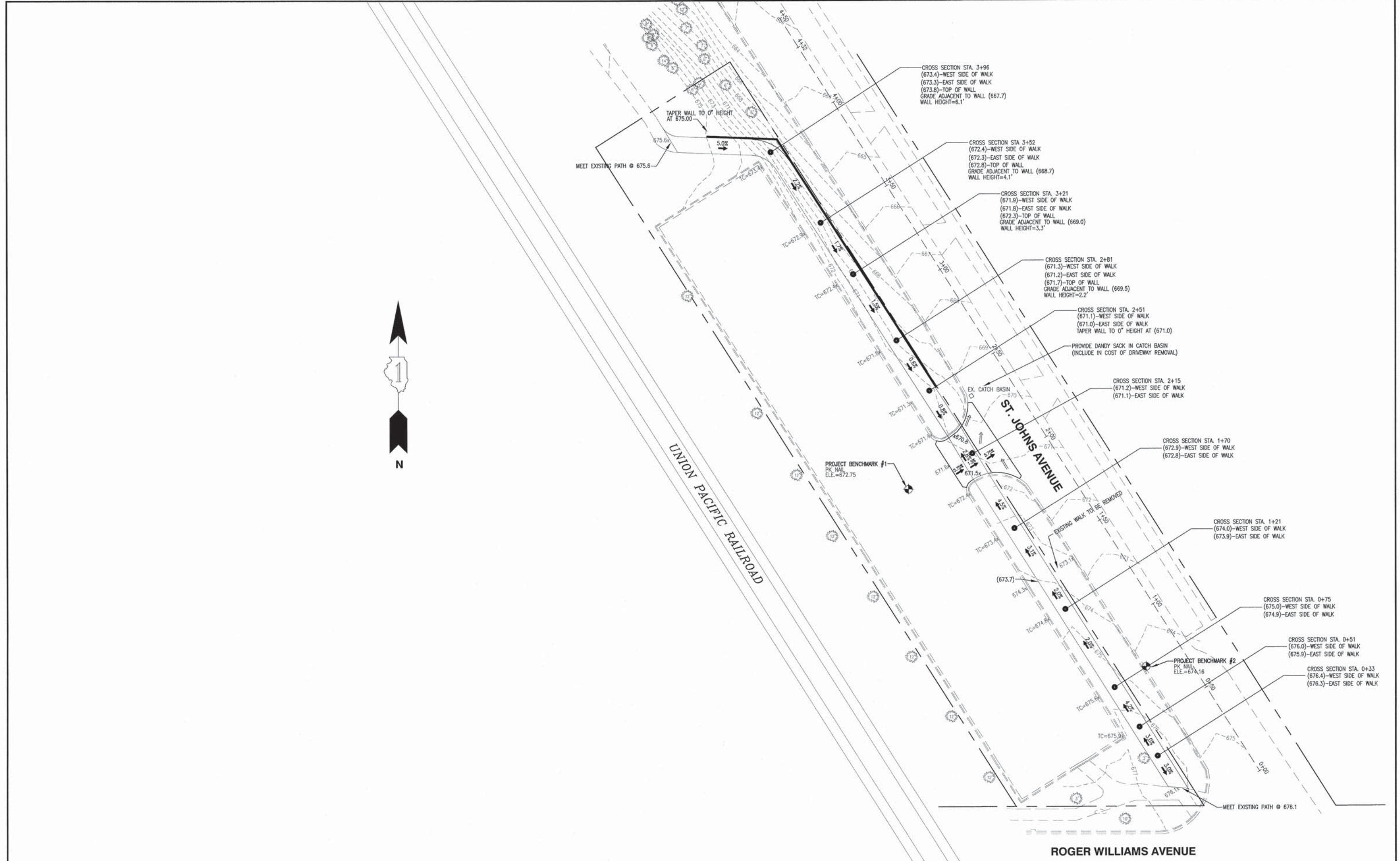
MIXTURE TYPE	AIR VOIDS @ NDES
HOT MIX ASPHALT SURFACE COURSE, MIX "D", N50	4% @ 50 GYR

- THE UNIT WEIGHT USED TO CALCULATE ALL HMA SURFACE MIXTURE QUANTITIES IS 112 LBS/SQYD/IN.
- THE "AC TYPE" FOR POLYMERIZED HMA MIXES SHALL BE "SBS/SBR PG 76 - 22" AND FOR NON-POLYMERIZED HMA THE "AC TYPE" SHALL BE "PG 64 - 22" UNLESS MODIFIED BY DISTRICT ONE SPECIAL PROVISIONS. FOR "PERCENT OF RAP" SEE DISTRICT ONE SPECIAL PROVISIONS.

NOTE:
 COORDINATE FINAL TREE SPECIES, SIZE, QUANTITY AND LOCATION WITH CITY FORESTER.
 ALL NEW TREES TO BE A (MIN.) 2 1/2" DIAMETER CALIPER.
 BURR OAK
 HYBRID ELM
 SHAGBARK HICKORY
 BLACK WALNUT
 OHIO BUCKEYE



USER NAME:	DESIGNED:	REVISED: 4/25 - PRE. ENGINEERING
PLOT SCALE:	DRAWN:	REVISED: 5/1 - PRE. FINAL PLANS SUBMITTAL
PLOT DATE:	CHECKED:	REVISED: 7/1 PER REVIEW
	DATE:	REVISED:



DOLAND ENGINEERING, LLC
 CIVIL ENGINEERING • LAND SURVEYING • LAND PLANNING
 304 EAST COLLEGE STREET, SUITE C
 PALATKA, ILLINOIS 60067
 (815) 381-3000 (815) 381-3400 FAX
 WWW.DOLANDENGINEERING.COM

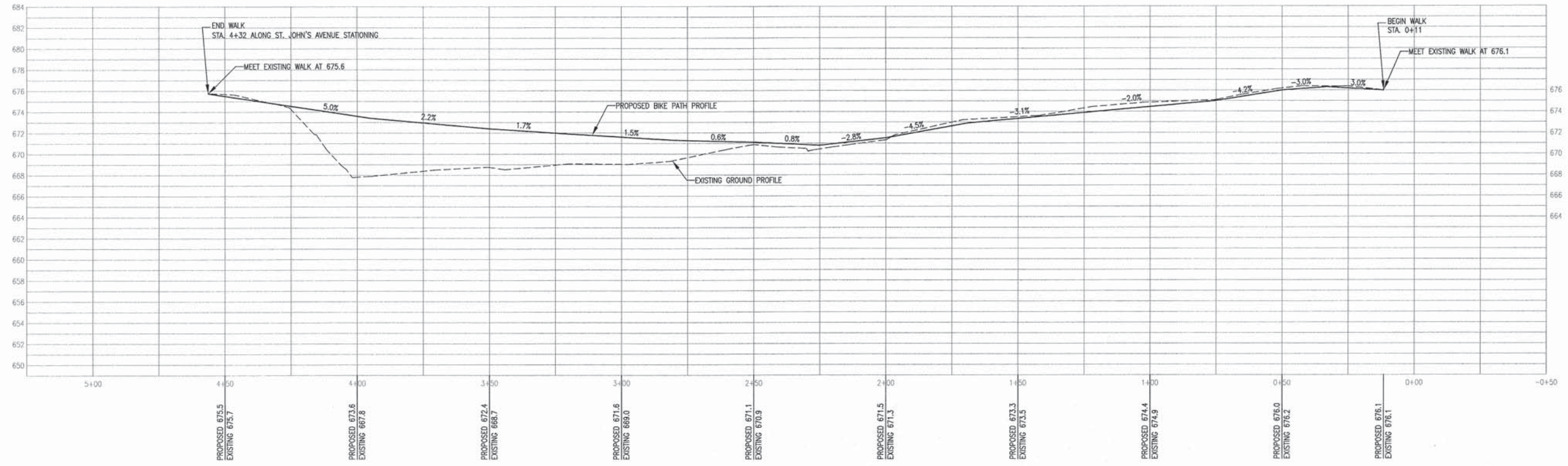
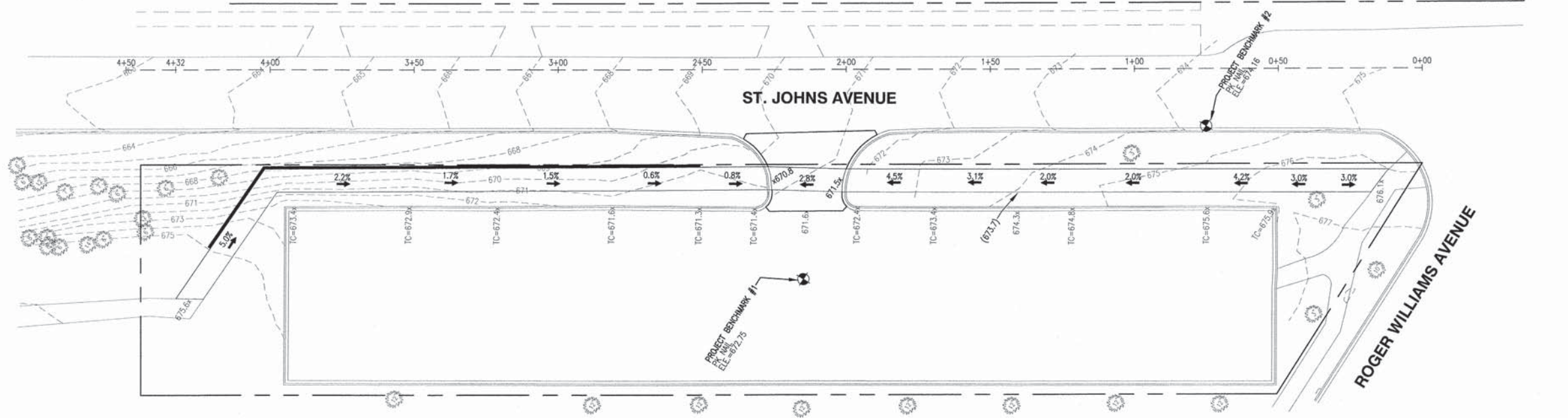
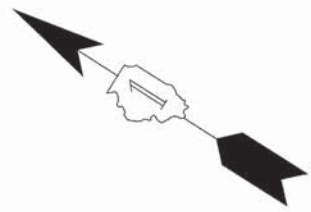
USER NAME:	DESIGNED:	REVISED: 4/25 - PRE. ENGINEERING
	DRAWN:	REVISED: 5/1 - PRE. FINAL PLANS SUBMITTAL
PLOT SCALE:	CHECKED:	REVISED: 7/1 PER REVIEW
PLOT DATE:	DATE:	REVISED:

**STATE OF ILLINOIS
 DEPARTMENT OF TRANSPORTATION**

**ROBERT McCLORY BIKE PATH
 GRADING PLAN**

SCALE: 1" = 20' SHEET NO. 6 OF 10 SHEETS STA. STA.

F.A. RTE.	SECTION	COUNTY	TOTAL SHEETS	SHEET NO.
--	13-00117-00-SW	LAKE	10	6
FED. ROAD DIST. NO. -	ILLINOIS CONTRACT NO. 61A65			



DOLAND ENGINEERING, LLC
 CIVIL ENGINEERING - LAND SURVEYING - LAND PLANNING
 304 EAST WASHINGTON STREET, SUITE C
 PRAIRIE, ILLINOIS 60592
 (815) 951-5088 (815) 951-3420 FAX
 www.dolandengineering.com

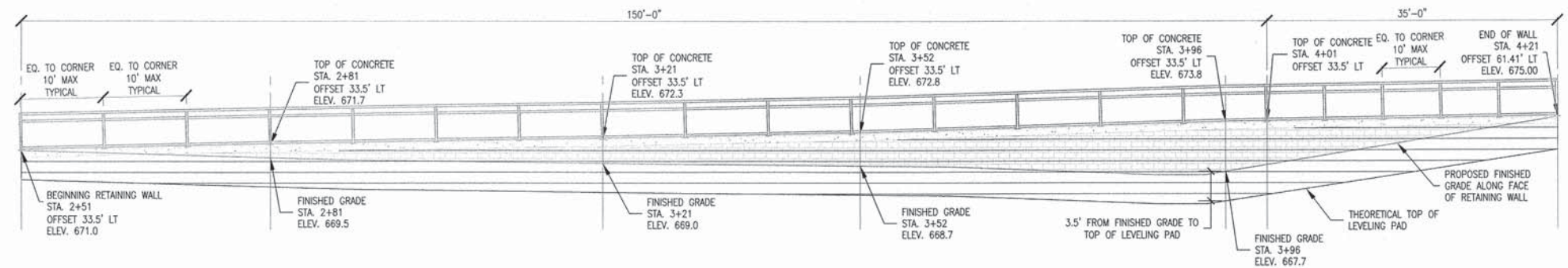
USER NAME:	DESIGNED:	REVISED: 4/25 - PRE. ENGINEERING
PLOT SCALE:	DRAWN:	REVISED: 5/1 - PRE. FINAL PLANS SUBMITTAL
PLOT DATE:	CHECKED:	REVISED:
	DATE:	REVISED:

**STATE OF ILLINOIS
 DEPARTMENT OF TRANSPORTATION**

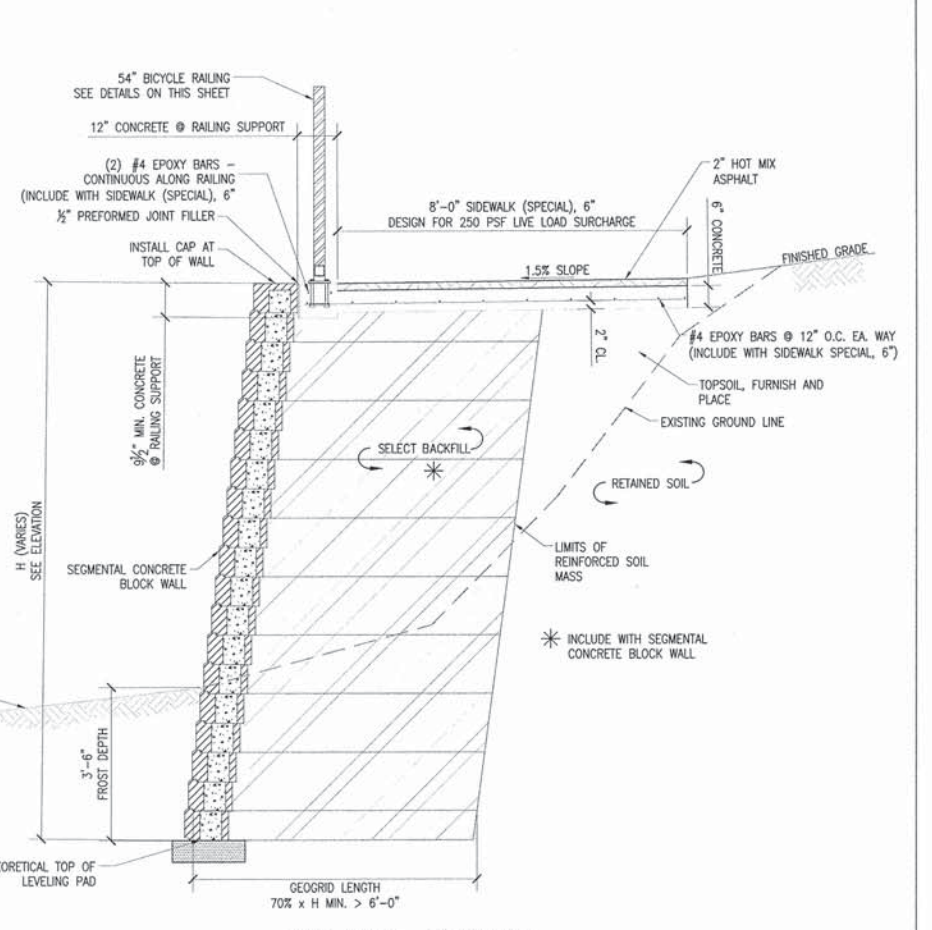
**ROBERT McCLORY BIKE PATH
 PROFILE - PROPOSED BIKE PATH**

SCALE: 1" = 20' SHEET NO. 7 OF 10 SHEETS STA. STA.

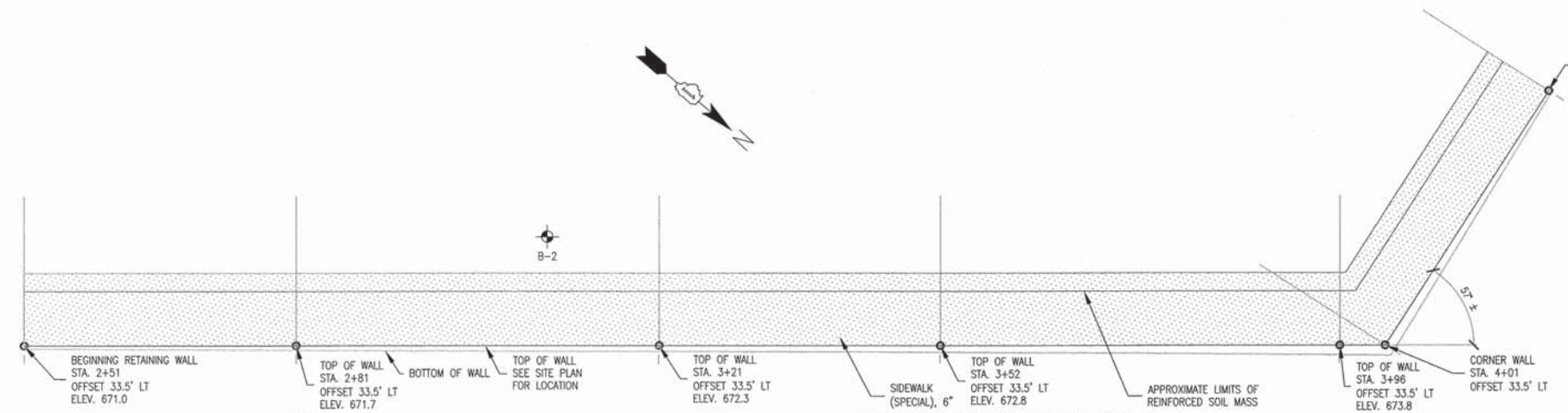
F.A. RTE.	SECTION	COUNTY	TOTAL SHEETS	SHEET NO.
--	13-00117-00-SW	LAKE	10	7
FED. ROAD DIST. NO. --		ILLINOIS	CONTRACT NO. 61A65	



ELEVATION



TYP WALL SECTION

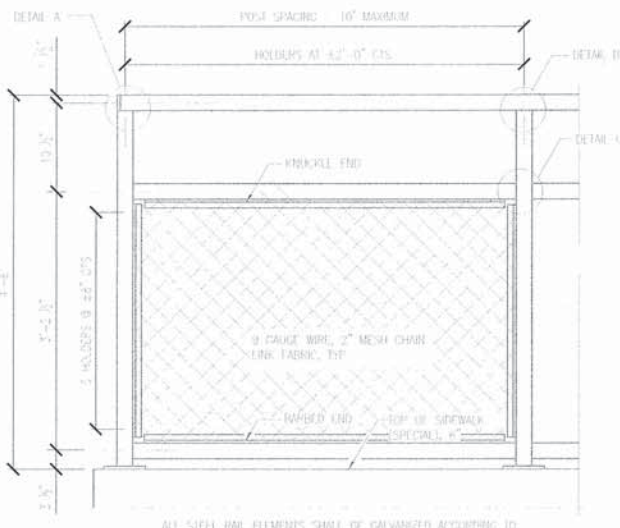


PLAN

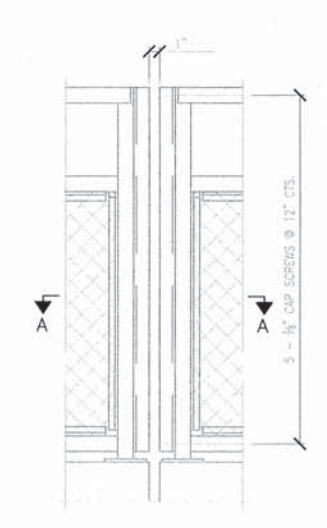
BILL OF MATERIAL

ITEM	UNIT	QUANTITY
BICYCLE RAILING	LF	185
SEGMENTAL BLOCK WALL	SQ. FT.	1,070
SIDEWALK (SPECIAL) 6"	SQ. FT.	1,450

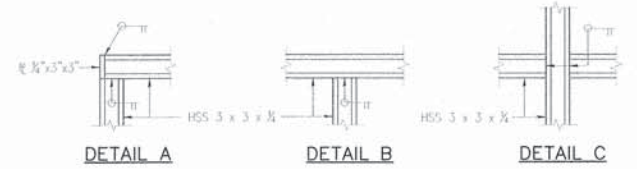
- LEGEND
- BORING LOCATION
 - SEGMENTAL BLOCK RETAINING WALL
 - SIDEWALK (SPECIAL), 6" - PLAN
 - CONCRETE
 - REINFORCED SOIL MASS
 - HOT MIX ASPHALT



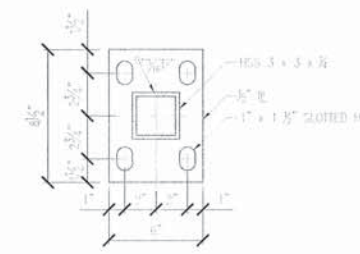
BICYCLE RAILING ELEVATION



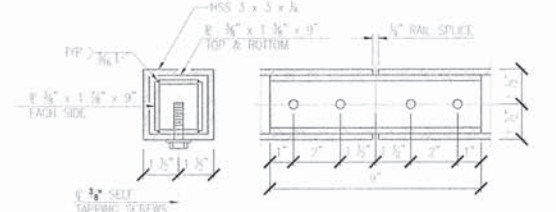
BICYCLE RAILING ELEVATION @ EXPANSION JOINT



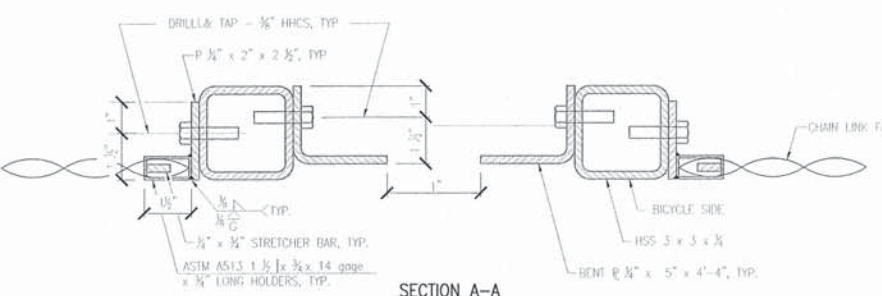
RAILING DETAILS



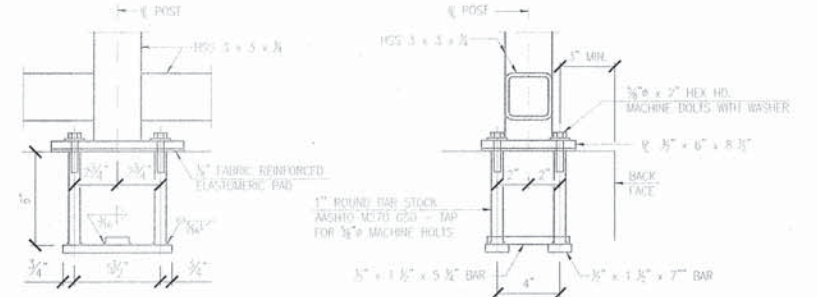
RAILING BASEPLATE



RAILING SPLICE



RAILING SECTION @ EXPANSION JOINT



ANCHOR BOLT DETAILS



USER NAME:	DESIGNED: RPB	REVISED:
PLOT SCALE: NTS	DRAWN: CMS	REVISED:
PLOT DATE: 11/05/2014	CHECKED: CRF	REVISED:
	DATE: 11/05/2014	REVISED:

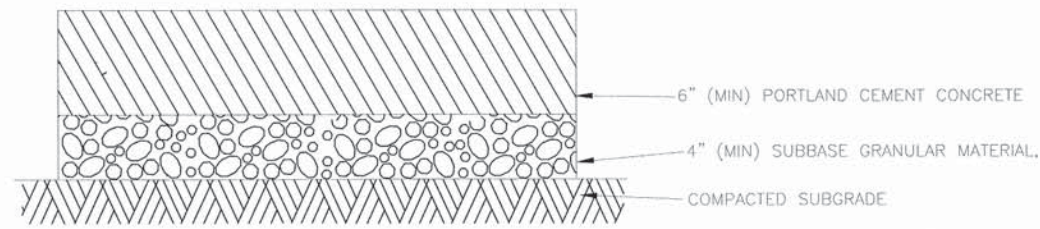
STATE OF ILLINOIS
DEPARTMENT OF TRANSPORTION

ROBERT McCLORY BIKE PATH
RETAINING WALL PLAN AND DETAILS

F.A. RTE.	SECTION	COUNTY	TOTAL SHEETS	SHEET NO.
--	13-00117-00-SW	LAKE	10	8
FED. ROAD DIST. NO. --		ILLINOIS	CONTRACT NO. 61A65	

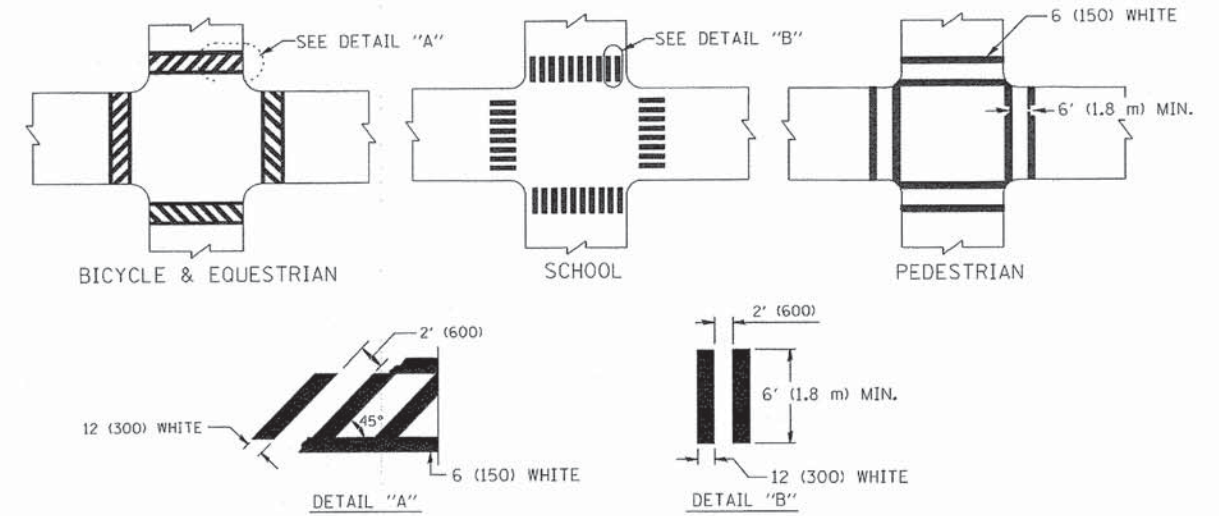
SCALE: NTS SHEET NO. 8 OF 10 SHEETS STA. 2+51 TO STA. 4+21

CONCRETE APRON CROSS SECTION

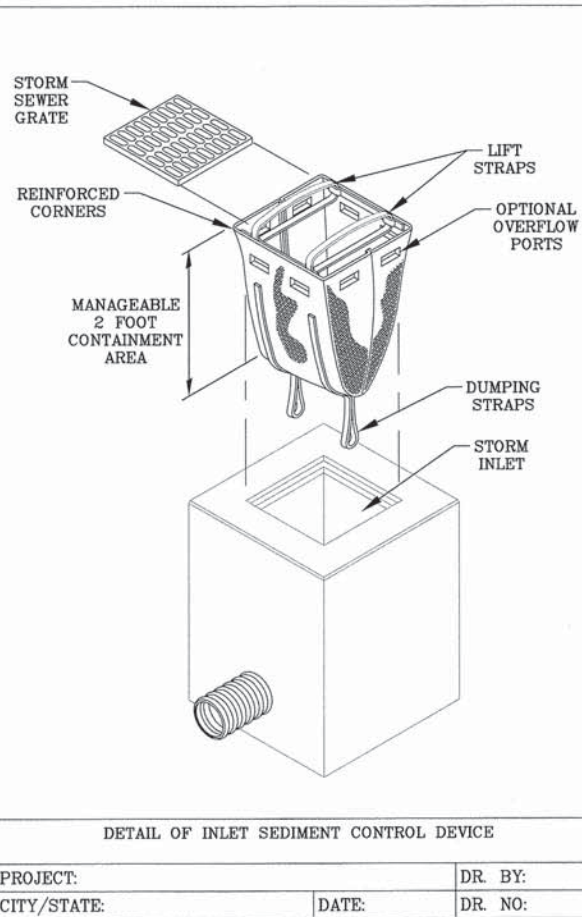


NOTES:

1. SECTIONS REPRESENT THE MINIMUM CROSS SECTION ALLOWED.
2. PORTLAND CEMENT CONCRETE SHALL CONFORM TO IDOT CLASS PV, MIN. 3500 PSI (6.1 BAG MIX) AT 14 DAYS, WITH 5% TO 8% AIR ENTRAINMENT. (NO FLY ASH ALLOWED)
3. ALL SUBGRADE SHALL HAVE A MINIMUM ILLINOIS BEARING RATIO (IBR) OF 3.0, AND BE COMPACTED TO AT LEAST 90% MODIFIED PROCTOR DENSITY (ASTM D-1557)
4. DEPRESS CONCRETE AT BIKE PATH CROSSING TO ACCOMMODATE BITUMINOUS MATERIAL THICKNESS.



TYPICAL CROSSWALK MARKING



INLET SEDIMENT CONTROL DEVICE SPECIFICATIONS

NOTE: THE CONTROL DEVICE WILL BE MANUFACTURED WITH A WOVEN MONOFILAMENT FABRIC THAT MEETS OR EXCEEDS THE FOLLOWING SPECIFICATIONS:

REGULAR FLOW DANDY SACK™ (BLACK)

Mechanical Properties	Test Method	Units	MARV
Grab Tensile Strength	ASTM D 4632	kN (lbs)	1.78 (400) x 1.40 (315)
Grab Tensile Elongation	ASTM D 4632	%	15 x 15
Puncture Strength	ASTM D 4833	kN (lbs)	0.67 (150)
Mullen Burst Strength	ASTM D 3786	kPa (psi)	5506 (800)
Trapezoid Tear Strength	ASTM D 4533	kN (lbs)	0.67 (150) x 0.73 (165)
UV Resistance	ASTM D 4355	%	90
Apparent Opening Size	ASTM D 4751	Mm (US Std Sieve)	0.425 (40)
Flow Rate	ASTM D 4491	l/min/m² (gal/min/ft²)	2852 (70)
Permittivity	ASTM D 4491	Sec ⁻¹	0.90

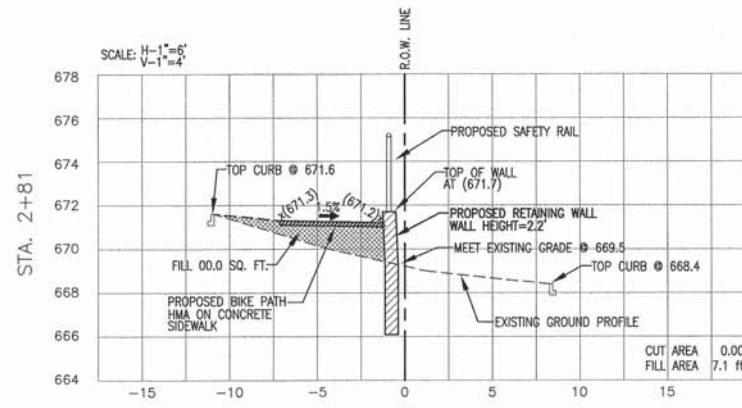
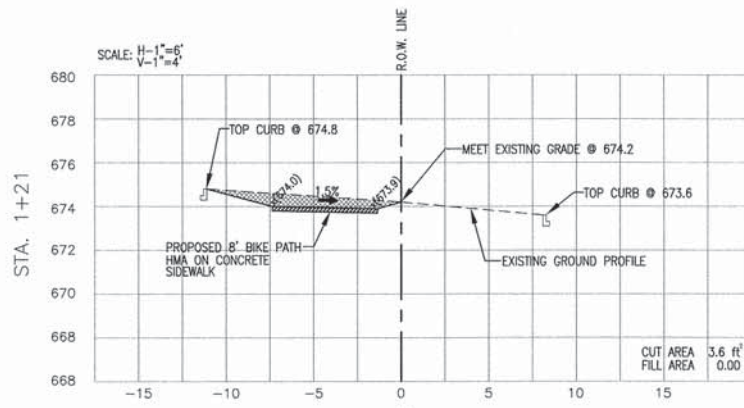
HI-FLOW DANDY SACK™ (SAFETY ORANGE)

Mechanical Properties	Test Method	Units	MARV
Grab Tensile Strength	ASTM D 4632	kN (lbs)	1.62 (365) x 0.89 (200)
Grab Tensile Elongation	ASTM D 4632	%	24 x 10
Puncture Strength	ASTM D 4833	kN (lbs)	0.40 (90)
Mullen Burst Strength	ASTM D 3786	kPa (psi)	3097 (450)
Trapezoid Tear Strength	ASTM D 4533	kN (lbs)	0.51 (115) x 0.33 (75)
UV Resistance	ASTM D 4355	%	90
Apparent Opening Size	ASTM D 4751	Mm (US Std Sieve)	0.425 (40)
Flow Rate	ASTM D 4491	l/min/m² (gal/min/ft²)	5907 (145)
Permittivity	ASTM D 4491	Sec ⁻¹	2.1

TYPE OF MARKING	WIDTH OF LINE	PATTERN	COLOR	SPACING / REMARKS
CENTERLINE ON 2 LANE PAVEMENT	4 (100)	SKIP-DASH	YELLOW	10' (3 m) LINE WITH 30' (9 m) SPACE
CENTERLINE ON MULTI-LANE UNDIVIDED PAVEMENT	2 @ 4 (100)	SOLID	YELLOW	11 (280) C-C
NO PASSING ZONE LINES: FOR ONE DIRECTION FOR BOTH DIRECTIONS	4 (100) 2 @ 4 (100)	SOLID SOLID	YELLOW YELLOW	5 1/2 (140) C-C FROM SKIP-DASH CENTERLINE 11 (280) C-C OMIT SKIP-DASH CENTERLINE BETWEEN
LANE LINES	4 (100) 5 (125) ON FREEWAYS	SKIP-DASH SKIP-DASH	WHITE WHITE	10' (3 m) LINE WITH 30' (9 m) SPACE
DOTTED LINES (EXTENSIONS OF CENTER, LANE OR TURN LANE MARKINGS)	SAME AS LINE BEING EXTENDED	SKIP-DASH	SAME AS LINE BEING EXTENDED	2' (600) LINE WITH 6' (1.8 m) SPACE
EDGE LINES	4 (100)	SOLID	YELLOW-LEFT WHITE-RIGHT	OUTLINE MOUNTABLE MEDIANS IN YELLOW; EDGE LINES ARE NOT USED NEXT TO BARRIER CURB
TURN LANE MARKINGS	6 (150) LINE; FULL SIZE LETTERS & SYMBOLS (8' (2.4m))	SOLID	WHITE	SEE TYPICAL TURN LANE MARKING DETAIL
TWO WAY LEFT TURN MARKING	2 @ 4 (100) EACH DIRECTION 8' (2.4m) LEFT ARROW	SKIP-DASH AND SOLID IN PAIRS	YELLOW WHITE	10' (3 m) LINE WITH 30' (9 m) SPACE FOR SKIP-DASH; 5 1/2 (140) C-C BETWEEN SOLID LINE AND SKIP-DASH LINE SEE TYPICAL TWO-WAY LEFT TURN MARKING DETAIL
CROSSWALK LINES (PEDESTRIAN) A. DIAGONALS (BIKE & EQUESTRIAN) B. LONGITUDINAL BARS (SCHOOL)	2 @ 6 (150) 12 (300) @ 45° 12 (300) @ 90°	SOLID SOLID SOLID	WHITE WHITE WHITE	NOT LESS THAN 6' (1.8 m) APART 2' (600) APART SEE TYPICAL CROSSWALK MARKING DETAILS.
STOP LINES	24 (600)	SOLID	WHITE	PLACE 4' (1.2 m) IN ADVANCE OF AND PARALLEL TO CROSSWALK, IF PRESENT, OTHERWISE, PLACE AT DESIRED STOPPING POINT, PARALLEL TO CROSSROAD CENTERLINE, WHERE POSSIBLE
PAINTED MEDIANS	2 @ 4 (100) WITH 12 (300) DIAGONALS @ 45° NO DIAGONALS USED FOR 4' (1.2 m) WIDE MEDIANS	SOLID	YELLOW; TWO WAY TRAFFIC WHITE; ONE WAY TRAFFIC	11 (280) C-C FOR THE DOUBLE LINE SEE TYPICAL PAINTED MEDIAN MARKING.
GORE MARKING AND CHANNELIZING LINES	8 (200) WITH 12 (300) DIAGONALS @ 45°	SOLID	WHITE	DIAGONALS: 15' (4.5 m) C-C (LESS THAN 30MPH (50 km/h)) 20' (6 m) C-C (30MPH (50 km/h) TO 45MPH (70 km/h)) 30' (9 m) C-C (OVER 45MPH (70 km/h))
RAILROAD CROSSING	24 (600) TRANSVERSE LINES; "RR" IS 6' (1.8 m) LETTERS; 16 (400) LINE FOR "X"	SOLID	WHITE	SEE STATE STANDARD 780001 AREA OF: "R"=3.6 SO. FT. (0.33 m²) EACH "X"=54.0 SO. FT. (5.0 m²)
SHOULDER DIAGONALS	12 (300) @ 45°	SOLID	WHITE - RIGHT YELLOW - LEFT	50' (15 m) C-C (LESS THAN 30MPH (50 km/h)) 75' (25 m) C-C (30 MPH (50 km/h) TO 45MPH (70 km/h)) 150' (45 m) C-C (OVER 45MPH (70 km/h))

FOR FURTHER DETAILS ON PAVEMENT MARKING REFER TO STANDARD SPECIFICATIONS FOR ROAD AND BRIDGE CONSTRUCTION AND STATE STANDARD 780001.

All dimensions are in inches (millimeters) unless otherwise shown.



NOTE:
CUT AND FILL AREAS, AS SHOWN, ARE BASED UPON THE EXISTING GROUND ELEVATION TO THE PROPOSED BIKE PATH ELEVATION.

