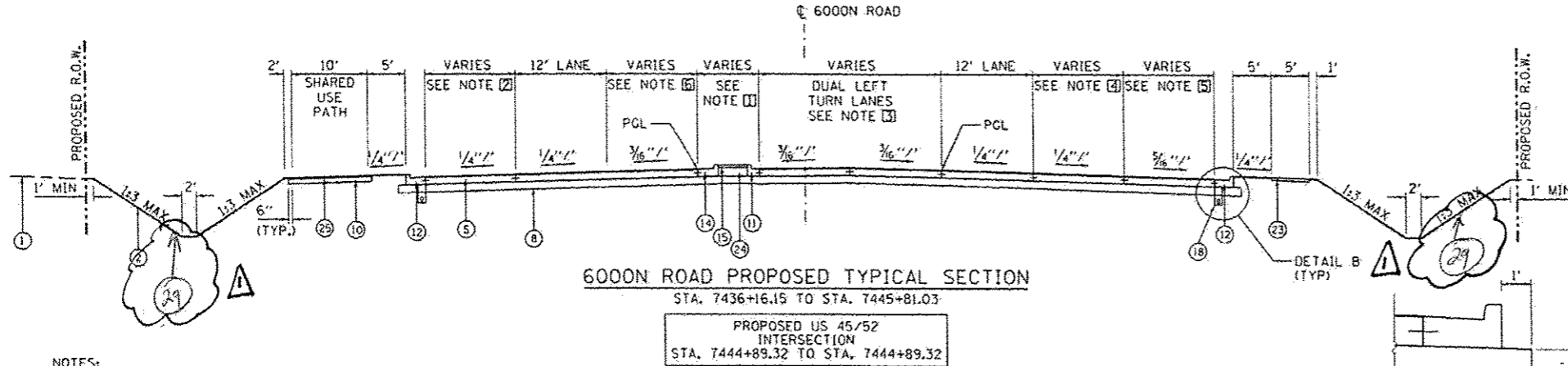
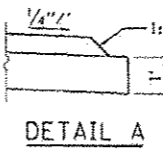
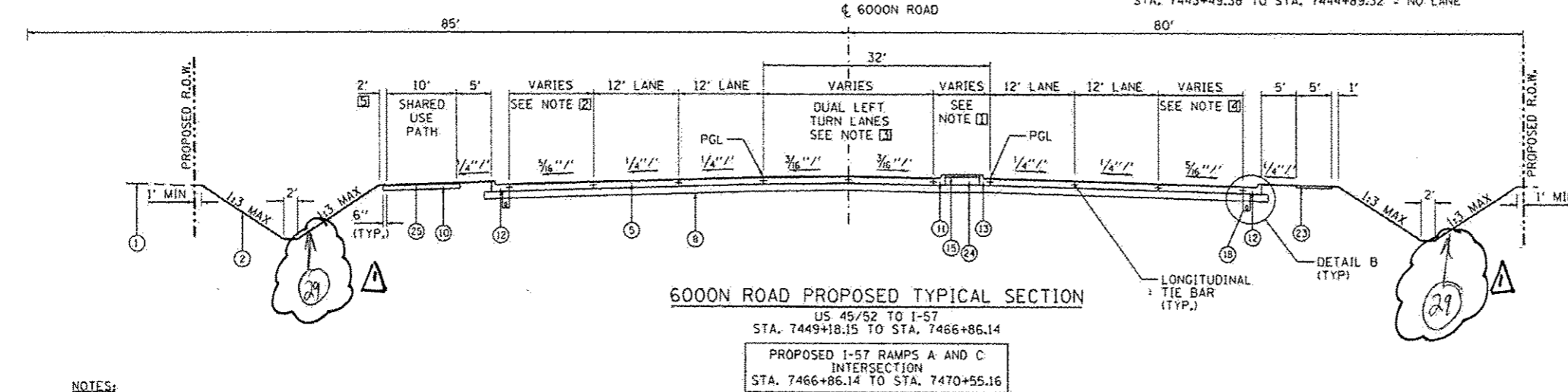
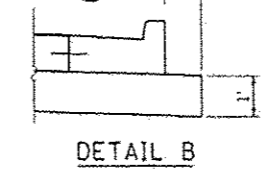


NOTES:
 [1] PAVEMENT WIDTH STA. 7435+00.00 TO STA. 7436+16.15 = TRANSITION FROM 11.1' TO 18.0'
 [2] PAVEMENT WIDTH STA. 7435+00.00 TO STA. 7436+16.15 = TRANSITION FROM 8.2' TO 18.0'



NOTES:
 [1] MEDIAN WIDTH
 STA. 7436+16.15 TO STA. 7437+63.36 = 5.18' TO 11.75' FLUSH
 STA. 7437+63.36 TO STA. 7438+73.83 = TRANSITION FROM 11.75' TO 16.3'
 STA. 7438+73.83 TO STA. 7439+07.11 = TRANSITION FROM 16.3' TO NO MEDIAN
 STA. 7439+07.11 TO STA. 7439+94.94 = NO MEDIAN
 STA. 7439+94.94 TO STA. 7441+74.32 = TRANSITION FROM 9.3' TO 16.75'
 STA. 7441+74.32 TO STA. 7443+49.38 = TRANSITION FROM 16.75' TO 17.75'
 STA. 7443+49.38 TO STA. 7444+74.32 = TRANSITION FROM 17.75' TO 8.0'
 STA. 7444+74.32 TO STA. 7444+89.32 = 8.0'
 [2] LANE TAPER
 STA. 7436+16.15 TO STA. 7442+48.21 = TRANSITION FROM 0.0' TO 12.0'
 STA. 7442+48.21 TO STA. 7444+89.32 = 12.0'
 [3] DUAL TURN LANES
 STA. 7436+16.15 TO STA. 7441+74.32 = NO TURN LANES
 STA. 7441+74.32 TO STA. 7444+74.32 = TRANSITION FROM 0.0' TO 24.0'
 STA. 7444+74.32 TO STA. 7444+89.32 = 24.0'
 [4] LANE TAPER
 STA. 7436+16.15 TO STA. 7441+08.47 = TRANSITION FROM 0.0' TO 12.0'
 STA. 7441+08.47 TO STA. 7444+89.32 = 12.0'

[5] TURN LANE
 STA. 7436+16.15 TO STA. 7441+78.78 = NO TURN LANE
 STA. 7441+78.80 TO STA. 7443+78.78 = TRANSITION FROM 0.0' TO 12.0'
 STA. 7443+78.78 TO STA. 7444+89.32 = 12.0'
 [6] TURN LANE
 STA. 7436+16.15 TO STA. 7439+99.26 = NO TURN LANE
 STA. 7439+99.26 TO STA. 7441+64.09 = 12.0'
 STA. 7441+64.09 TO STA. 7443+49.38 = TRANSITION FROM 12.0' TO 0.0'
 STA. 7443+49.38 TO STA. 7444+89.32 = NO LANE



NOTES:
 [1] MEDIAN WIDTH
 STA. 7449+18.15 TO STA. 7450+49.86 = 8.0' RT
 STA. 7450+49.86 TO STA. 7453+50.18 = TRANSITION FROM 8.0' RT TO 8.0' LT
 STA. 7453+50.18 TO STA. 7455+14.00 = 8.0' LT
 STA. 7455+14.00 TO STA. 7456+06.00 = 0.0'
 STA. 7456+06.00 TO STA. 7457+97.60 = 8.0' RT
 STA. 7457+97.60 TO STA. 7460+56.35 = 8.0' RT TO 8.0' LT
 STA. 7460+56.35 TO STA. 7462+36.00 = 8.0' LT
 STA. 7462+36.00 TO STA. 7463+31.02 = 0.0'
 STA. 7463+31.02 TO STA. 7465+11.03 = 8.0' RT
 STA. 7465+11.03 TO STA. 7466+86.14 = 8.0' TO 21.3'
 [2] TURN LANE
 STA. 7449+18.15 TO STA. 7451+15.40 = 12.0'
 STA. 7451+15.40 TO STA. 7452+98.70 = TRANSITION FROM 12.0' TO 0.0'
 STA. 7452+98.70 TO STA. 7466+86.14 = NO TURN LANE
 [3] TURN LANE
 STA. 7449+18.15 TO STA. 7450+13.54 = TRANSITION FROM 10.5' TO 0.0'
 STA. 7450+13.54 TO STA. 7463+07.74 = NO TURN LANE
 STA. 7463+07.74 TO STA. 7465+07.74 = TRANSITION FROM 0.0' TO 12.0'
 STA. 7465+07.74 TO STA. 7466+86.14 = 12.0'
 [4] DUAL TURN LANES
 STA. 7449+18.15 TO STA. 7450+49.86 = 24.0' LT
 STA. 7450+49.86 TO STA. 7453+50.18 = TRANSITION FROM 24.0' TO 0.0' LT, 0.0' TO 24.0' RT
 STA. 7453+50.18 TO STA. 7455+14.00 = 24.0' RT
 STA. 7456+06.00 TO STA. 7457+97.60 = 24.0' LT
 STA. 7457+97.60 TO STA. 7460+56.35 = 24.0' TO 0.0' LT, 0.0' TO 24.0' RT
 STA. 7460+56.35 TO STA. 7462+36.00 = 24.0' RT
 STA. 7463+31.02 TO STA. 7465+11.03 = 24.0' LT
 STA. 7465+11.03 TO STA. 7466+86.14 = 24.0' TO 0.0' LT
 [5] STA. 7463+00 TO STA. 7466+86.14 = 3.0'

- LEGEND**
- 1 EXISTING GROUND LINE
 - 2 GROUND LINE
 - 3 CONCRETE MEDIAN, TYPE SB (SPECIAL)
 - 4 PORTLAND CEMENT CONCRETE PAVEMENT, 9" (JOINTED)
 - 5 PORTLAND CEMENT CONCRETE PAVEMENT, 9 1/2" (JOINTED)
 - 6 PORTLAND CEMENT CONCRETE PAVEMENT 10" (JOINTED)
 - 7 STABILIZED SUBBASE - HOT-MIX ASPHALT, 4"
 - 8 AGGREGATE SUBGRADE IMPROVEMENT, 12"
 - 9 UNUSED
 - 10 AGGREGATE BASE COURSE, TYPE A 6"
 - 11 COMBINATION CONCRETE CURB AND GUTTER, TYPE B-6.12
 - 12 COMBINATION CONCRETE CURB AND GUTTER, TYPE B-6.24
 - 13 COMBINATION CONCRETE CURB AND GUTTER, TYPE B-6.12 (TIP OUT)
 - 14 COMBINATION CONCRETE CURB AND GUTTER, TYPE B-6.24 (TIP OUT)
 - 15 CONCRETE MEDIAN SURFACE, 4 INCH
 - 16 CONCRETE MEDIAN SURFACE, CORRUGATED
 - 17 AGGREGATE SUBGRADE IMPROVEMENT, 24"
 - 18 PIPE UNDERDRAINS 4"
 - 19 AGGREGATE SHOULDERS, TYPE B 6"
 - 20 PORTLAND CEMENT CONCRETE SHOULDERS 9"
 - 21 PORTLAND CEMENT CONCRETE SHOULDERS 9 1/2"
 - 22 PORTLAND CEMENT CONCRETE SHOULDERS 10"
 - 23 PORTLAND CEMENT CONCRETE SIDEWALK, 4"
 - 24 AGGREGATE FILL TO BE INCLUDED IN THE COST FOR CONCRETE MEDIAN SURFACE, 4"
 - 25 HOT-MIX ASPHALT SURFACE COURSE, MIX C, N30, 2"
 - 26 HOT-MIX ASPHALT SURFACE COURSE, MIX C, N50, 2"
HOT-MIX ASPHALT BINDER, N50, 8"
 - 27 HMA SURFACE REMOVAL, 2"
HMA SURFACE COURSE, MIX C, N50, 2"
 - 28 HMA SURFACE REMOVAL, 2"
POLYMERIZED HMA SURFACE COURSE, MIX E, N90, 2"

29 TOPSOIL EXCAVATION AND PLACEMENT (4")

Rev. 1-20-15

DATE	DESIGNED	BY
DATE	DRAWN	BY
DATE	CHECKED	BY
DATE	REVISION	BY

FILE NAME =	USER NAME = MWH	DESIGNED - DPA	REVISED -
PROJECT NAME =	PROJECT NUMBER =	DRAWN - MWH	REVISED -
MODEL NAME =	PLT SCALE = AS SHOWN	CHECKED - DPA	REVISED -
MODEL # =	PLT DATE = 8/25/2014	DATE = 12.12.13	REVISED -

STATE OF ILLINOIS
DEPARTMENT OF TRANSPORTATION

PROPOSED TYPICAL SECTIONS		F.S.I. RTE.	SECTION	COUNTY	TOTAL SHEETS	SHEET NO.
I-57 AND 6000 RD (BOURBONNAIS PARKWAY)		57	146-11BK-1	KANKAKEE	819	26
BOURBONNAIS, IL		SCALE: AS SHOWN		SHEET NO. OF SHEETS		STA. TO STA.
		FED. ROAD DIST. NO.		ILLINOIS FED. AID PROJECT		CONTRACT NO. 66982