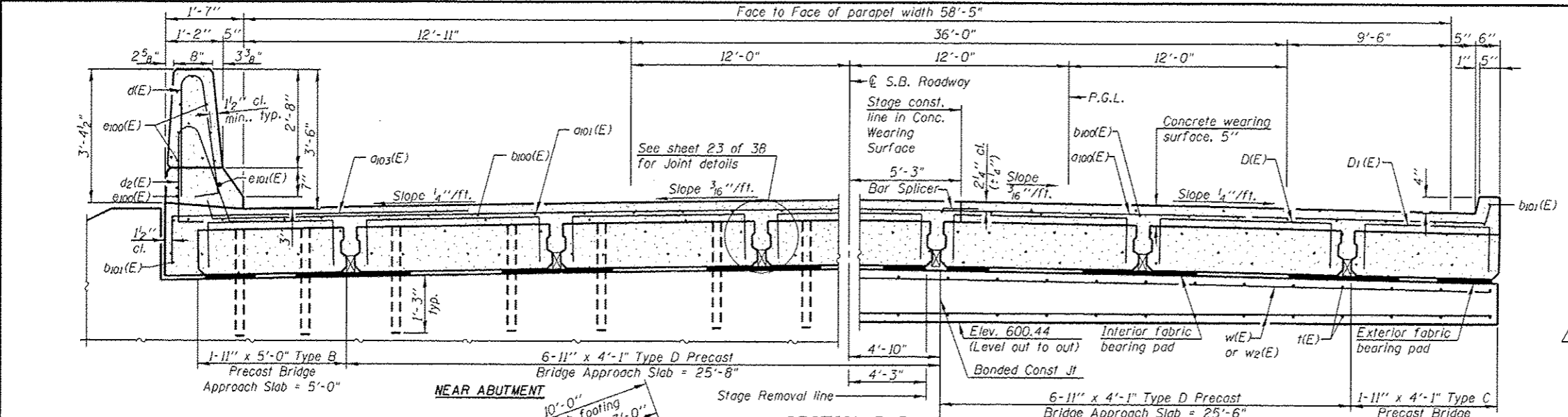


Notes:
 For Sections A-A, C-C, Parapet reinforcement and Bar bending details see sheet 22 of 38.
 For Precast Bridge Approach Slab and Joint Seal details see sheet 24 of 38.



BILL OF MATERIAL

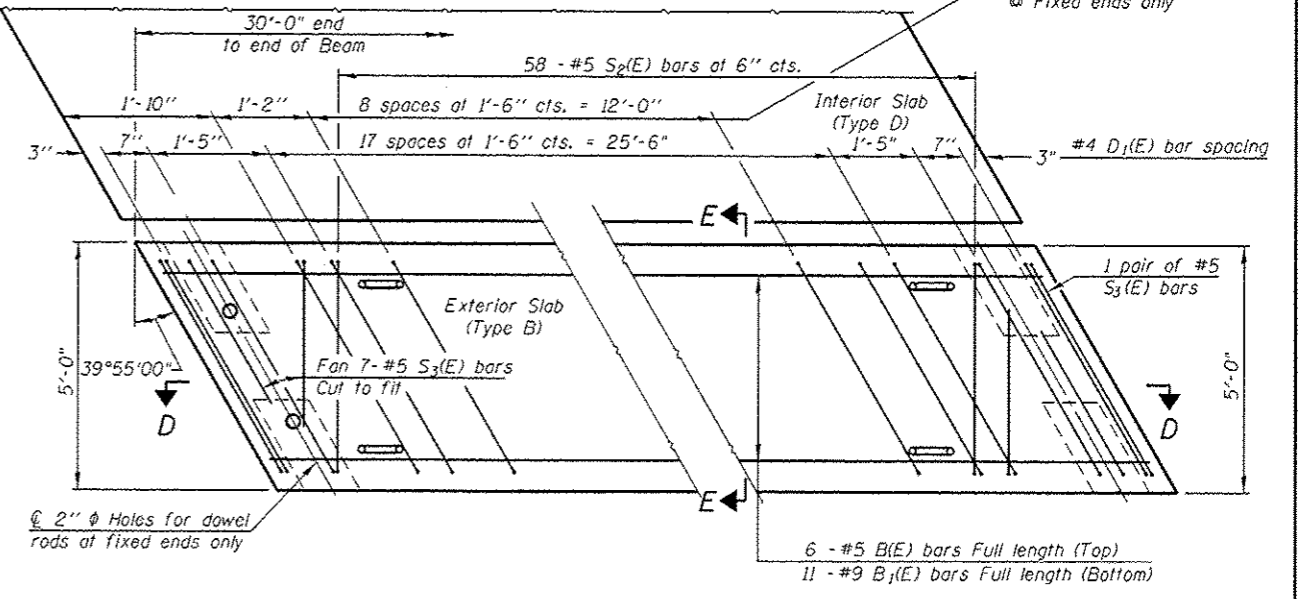
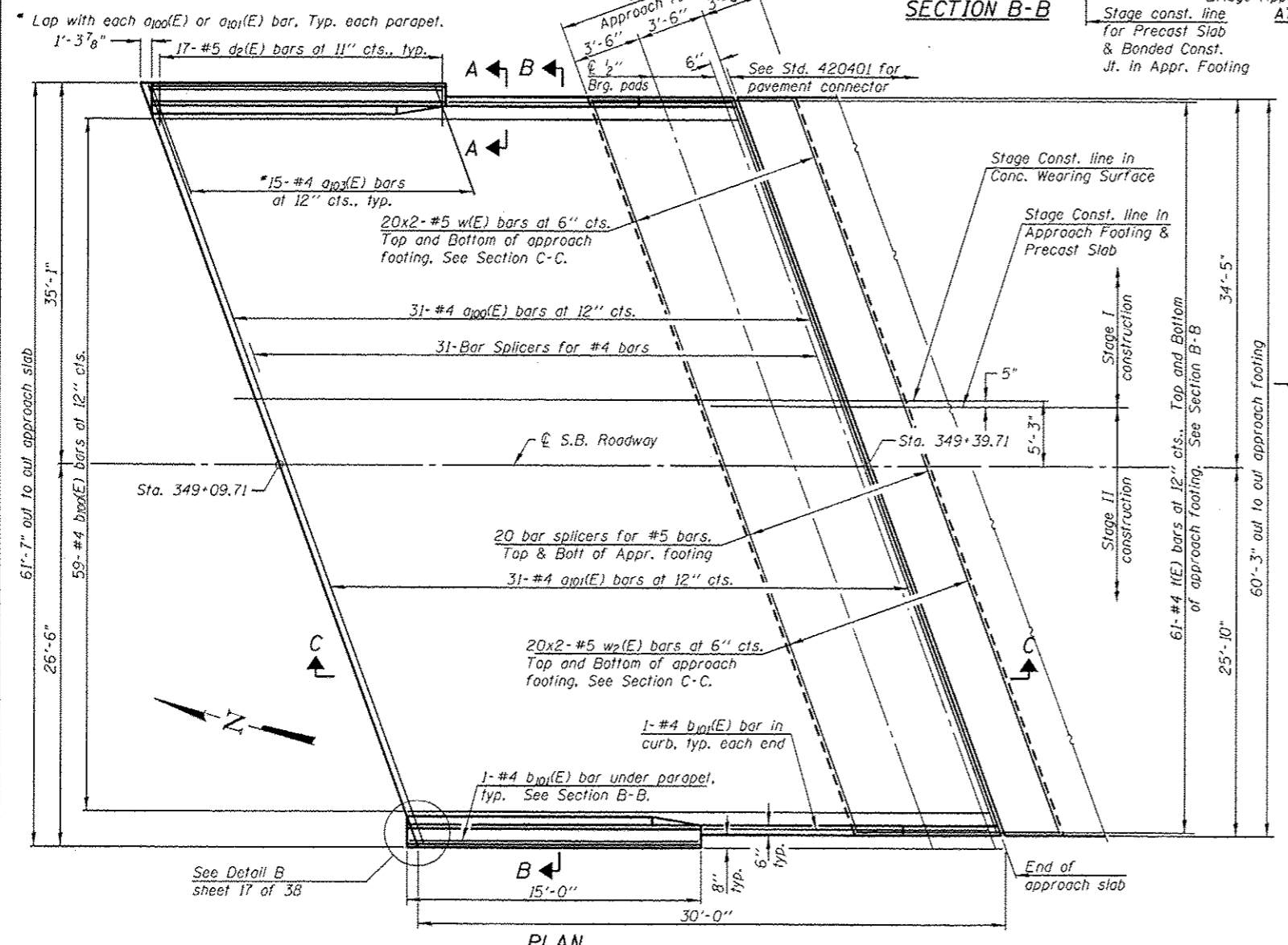
Bar	No.	Size	Length	Shape
a100(E)	31	#4	37'-8"	—
a101(E)	31	#4	40'-5"	—
a103(E)	30	#4	7'-5"	—
b100(E)	59	#4	29'-8"	—
b101(E)	4	#4	14'-8"	—
d(E)	34	#5	6'-10"	⌒
d2(E)	34	#5	5'-11"	⌒
e100(E)	16	#4	14'-8"	—
e101(E)	2	#8	14'-8"	—
f(E)	122	#4	12'-8"	—
w(E)	80	#5	20'-6"	—
w2(E)	80	#5	21'-6"	—
Concrete Superstructure	Cu. Yd.	4.1		
Concrete Structures	Cu. Yd.	36.9		
Reinforcement Bars, Epoxy Coated	Pound	8,200		
Precast Bridge Approach Slab	Sq. Ft.	1,808		
Concrete Wearing Surface, 5"	Sq. Yd.	204		
Preformed Joint Strip Seal	Foot	83		

**BAR LIST
 EXTERIOR SLAB
 TYPE B (I REQUIRED)**
 (For information only)

Bar	No.	Size	Length	Shape
B(E)	5	#5	29'-8"	—
B1(E)	11	#9	29'-8"	—
D1(E)	32	#4	8'-0"	⌒
S2(E)	58	#5	11'-5"	⌒
S3(E)	18	#5	9'-3"	⌒

Min Bar Lap
 #5 Bar = 2'-7"
 #4 Bar = 2'-1"

For Section D-D, D1(E), S2(E), & S3(E) bar details see sheet 24 of 38



PARTIAL PLAN
 (Showing precast bridge approach beams)

FILE NAME = S:\P\2014\12\28\308513-10\1001 06 P18 137 Item 28 W07 58 1-50 Bridge\ACAD\CADD Sheets\084021-72F 41-821-South Bridge Approach Slab.dgn
 MODEL DRIVER = PLOTDR154



USER NAME = sfreg	DESIGNED - KRG	REVISED / 1/9/2015 D.R.B.
PLOT SCALE =	CHECKED - MJK	REVISED
PLOT DATE = 1/12/2015	DRAWN - TF	REVISED
	CHECKED - SCD	REVISED

STATE OF ILLINOIS
 DEPARTMENT OF TRANSPORTATION

SOUTH BRIDGE APPROACH SLAB
 STRUCTURE NO. 084-0021
 SHEET NO. 21 OF 38 SHEETS

F.A.I. R.T.E.	SECTION	COUNTY	TOTAL SHEETS	SHEET NO.
55	(84-2) BR-3, RS-4	SANGAMON	86	62
CONTRACT NO. 72F49			ILLINOIS FED. AID PROJECT	