

LEGEND

- LOCATIONS WHERE EDGE LIGHTING IS TO BE INSTALLED ADJACENT TO PAVEMENT
- LOCATION OF LIGHTED BARRICADES @15± CTRS. TO CLOSE A PAVEMENT TO AIRCRAFT

CRITICAL POINTS			
NO.	LATITUDE	LONGITUDE	ELEVATION
CP-1	39° 17' 59.69"	88° 00' 22.23"	649.3
CP-2	39° 18' 01.45"	88° 00' 20.40"	649.4
CP-3	39° 17' 55.33"	88° 00' 22.68"	649.9
CP-4	39° 17' 59.31"	88° 00' 18.54"	649.3

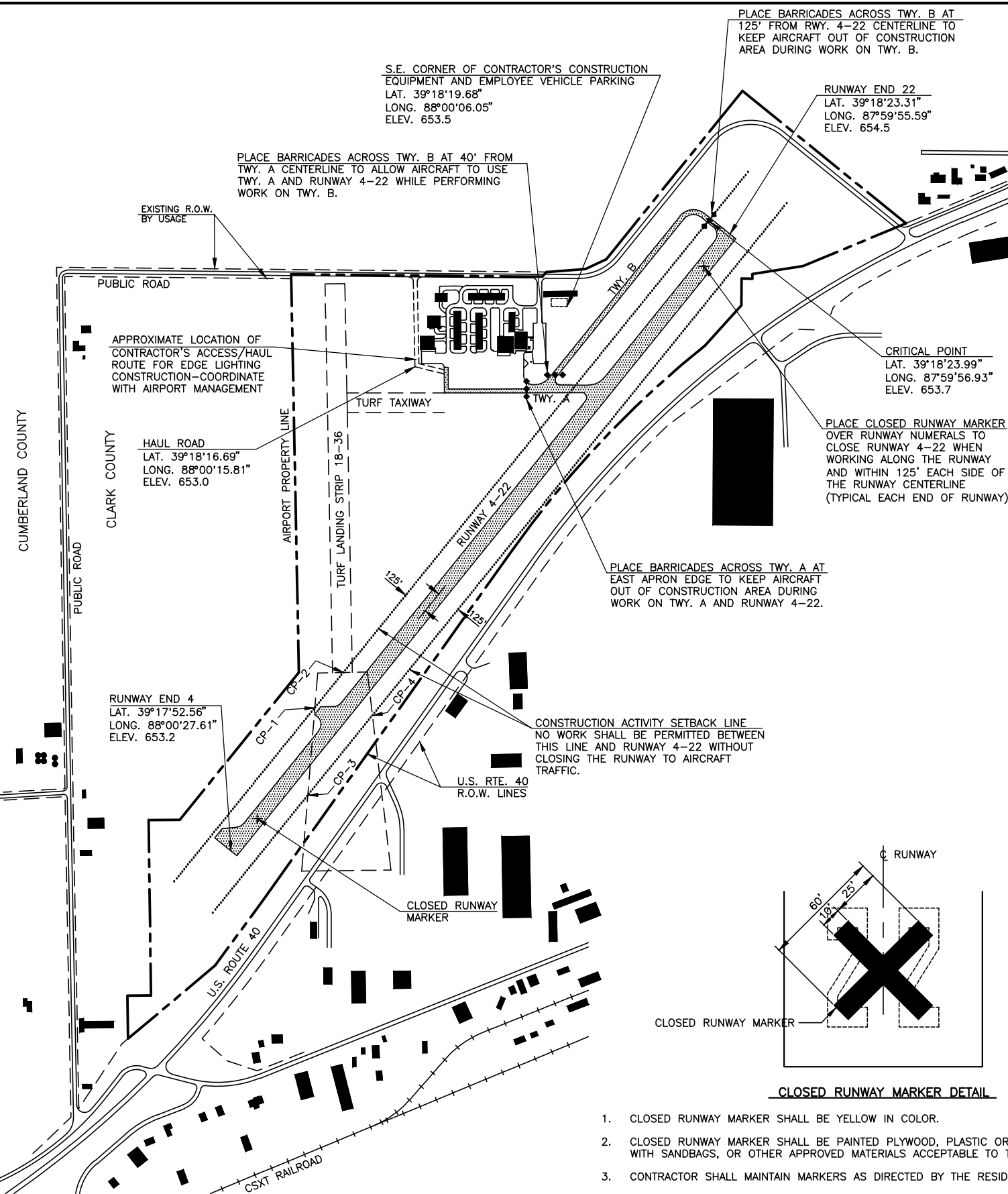
GENERAL NOTES

1. THE CONTRACTOR SHALL BE RESPONSIBLE FOR PROTECTING UTILITY PROPERTY FROM CONSTRUCTION OPERATIONS. PRIOR TO STARTING WORK, THE CONTRACTOR SHALL CONTACT J.U.L.I.E. (JOINT UTILITY LOCATING INFORMATION FOR EXCAVATORS) PHONE 1-800-892-0123 OR 811 TO ARRANGE FOR LOCATION OF UTILITIES IN THE WORK AREA. A MINIMUM OF FORTY-EIGHT HOURS ADVANCE NOTICE IS REQUIRED FOR NON-EMERGENCY WORK.

COUNTY - CLARK
 CITY - CASEY
 TOWNSHIP - T. 10 N., R. 14 W. 2nd P.M. (CASEY)
 SECTION NO. - 19

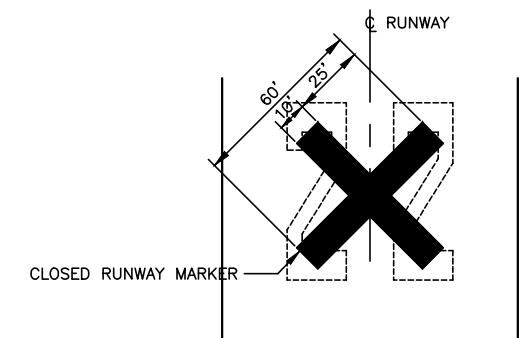
2. AVAILABLE RECORDS INDICATE THAT THE FOLLOWING UTILITIES ARE LOCATED WITHIN THE GENERAL AREA OF THIS IMPROVEMENT :

TELEPHONE : ALLTEL ILLINOIS, INC.
 WATER : CITY OF CASEY, ILLINOIS - UTILITIES DEPARTMENT
 ELECTRICAL : CITY OF CASEY, ILLINOIS - UTILITIES DEPARTMENT



CONSTRUCTION PROCEDURE NOTES

1. ALL CONTRACTOR EMPLOYEES WILL PARK THEIR PERSONAL VEHICLES IN THE AREA DESIGNATED BY THE AIRPORT MANAGER FOR USE AS A VEHICLE PARKING AREA. THE CONTRACTOR WILL BE RESPONSIBLE FOR TRANSPORTING EMPLOYEES TO THE PROPOSED CONSTRUCTION SITE. ONLY AUTHORIZED CONTRACTOR VEHICLES WILL BE ALLOWED ON THE AIR OPERATIONS AREA OF THE AIRPORT AND ON THE CONSTRUCTION SITE.
2. THE CONTRACTOR SHALL FURNISH ALL EMPLOYEES WITH SOME TYPE OF TAG OR GARMENT TO IDENTIFY THEM AS BEING PART OF THE CONSTRUCTION CREW.
3. FLAGS WILL BE REQUIRED ON ALL CONTRACTOR'S VEHICLES AND EQUIPMENT USED ON THE AIRPORT OPERATIONS AREA AND CONSTRUCTION SITE. THE FLAGS SHALL BE THREE (3) FOOT SQUARE CHECKERED FLAGS (INTERNATIONAL ORANGE AND WHITE) DISPLAYED IN FULL VIEW ABOVE THE VEHICLE.
4. THE CONTRACTOR WILL USE THE DESIGNATED HAUL ROUTE AND EQUIPMENT STORAGE AREA SHOWN ON THIS SHEET. IT WILL BE THE CONTRACTOR'S RESPONSIBILITY TO MAINTAIN THE DESIGNATED HAUL ROUTE AND EQUIPMENT STORAGE AREA FOR THE DURATION OF THE PROJECT. ANY DAMAGE TO EXISTING PAVEMENTS USED TO HAUL MATERIAL TO THE CONSTRUCTION SITE WILL BE REPAIRED BY THE CONTRACTOR AT HIS OWN EXPENSE TO THE SATISFACTION OF THE AIRPORT MANAGER AND THE RESIDENT ENGINEER.
5. CONSTRUCTION ACTIVITY CONTROL AND OPERATION AREA PROTECTION SHALL BE ACCOMPLISHED IN ACCORDANCE WITH FAA ADVISORY CIRCULAR NO. 150/5370-2F.
6. THE MAXIMUM CONSTRUCTION EQUIPMENT HEIGHT UTILIZED ON THE AIRPORT FOR THIS PROJECT SHALL BE 15'.
7. THIS PROJECT CONSISTS OF WORK TO INSTALL EDGE LIGHTING ON RUNWAY 4-22 AND TAXIWAYS.
8. THIS PROJECT WILL DISTURB LESS THAN 1 ACRE OF LAND.
9. THE EXISTING AIRPORT REFERENCE CODE FOR RUNWAY 4-22 IS B-II (150' WIDE RSA).
10. RUNWAY 4-22 SHALL BE CLOSED TO AIRCRAFT TRAFFIC WHILE THE EDGE LIGHTING SYSTEM COMPONENTS ARE BEING INSTALLED WITHIN 125' OF THE RUNWAY 4-22 CENTERLINE.
11. AIRCRAFT SHALL USE THE TURF TAXIWAY AND TURF RUNWAY LANDING STRIP 18-36 WHILE RUNWAY 4-22 IS CLOSED TO PERFORM THE INSTALLATION OF THE EDGE LIGHTING SYSTEMS.
12. TAXIWAY B CAN BE CLOSED TO AIRCRAFT BY BARRICADING BOTH ENDS OF THE TAXIWAY IN ORDER TO PERFORM WORK ON TAXIWAY B WHILE OPENING TAXIWAY A AND RUNWAY 4-22 FOR USE BY AIRCRAFT. THE CLOSURE OF TAXIWAY B WHILE RUNWAY 4-22 IS OPEN SHALL NOT EXCEED THREE DAYS AT A TIME.
13. THE CONTRACTOR SHALL GIVE THE AIRPORT MANAGEMENT THREE DAYS NOTICE PRIOR TO STARTING ANY CONSTRUCTION WHICH WOULD NECESSITATE CLOSURE OF RUNWAYS AND TAXIWAYS. AIRPORT MANAGEMENT SHALL GIVE PROPER NOTICE (NOTAMS) TO THE NEAREST FAA FLIGHT SERVICE STATION PRIOR TO THE START OF CONSTRUCTION AND CLOSURE OF RUNWAYS AND TAXIWAYS.
14. THE CONTRACTOR SHALL OBSERVE EXTRA PRECAUTION AND MONITOR LOCAL AIRCRAFT OPERATIONS IN THE VICINITY WHEN PERFORMING WORK ON RUNWAY 4-22 IN THE AREA WHERE THE TURF LANDING STRIP EXTENDED SOUTHERLY WOULD INTERSECT WITH PAVED RUNWAY 4-22. THIS AREA IS LOCATED APPROXIMATELY BETWEEN STA. 111+00 AND STA. 113+00 ALONG RUNWAY 4-22. THE CONTRACTOR SHALL PROVIDE A FLAGMAN WITH A RADIO TUNED TO FREQUENCY 122.8 TO MONITOR THE OPERATIONS BY RADIO AND VISUALLY SO AS TO DIRECT CONSTRUCTION EQUIPMENT AND PERSONNEL AWAY FROM THIS AREA WHEN ARRIVING OR DEPARTING AIRCRAFT CROSS ABOVE RUNWAY 4-22 IN THIS LOCATION.



CLOSED RUNWAY MARKER DETAIL

1. CLOSED RUNWAY MARKER SHALL BE YELLOW IN COLOR.
2. CLOSED RUNWAY MARKER SHALL BE PAINTED PLYWOOD, PLASTIC OR FABRIC SHEETING WEIGHTED DOWN WITH SANDBAGS, OR OTHER APPROVED MATERIALS ACCEPTABLE TO THE ENGINEER.
3. CONTRACTOR SHALL MAINTAIN MARKERS AS DIRECTED BY THE RESIDENT ENGINEER.
4. THE COST OF FURNISHING, PLACING, MAINTAINING, AND REMOVING CLOSED RUNWAY MARKERS SHALL BE PAID FOR UNDER ITEM AR150530 TRAFFIC MAINTENANCE.

CASEY MUNICIPAL AIRPORT CASEY, ILLINOIS	
IMPROVEMENT AND SAFETY PLAN	
HUTCHISON ENGINEERING, INC. JACKSONVILLE, ILLINOIS	
DRAWN BY: R.L.R. & J.C.W. DATE : OCTOBER, 2014	ILL. PROJ. NO. 1H8-4369 SBG PROJ. NO. 3-17-SBGP-XX