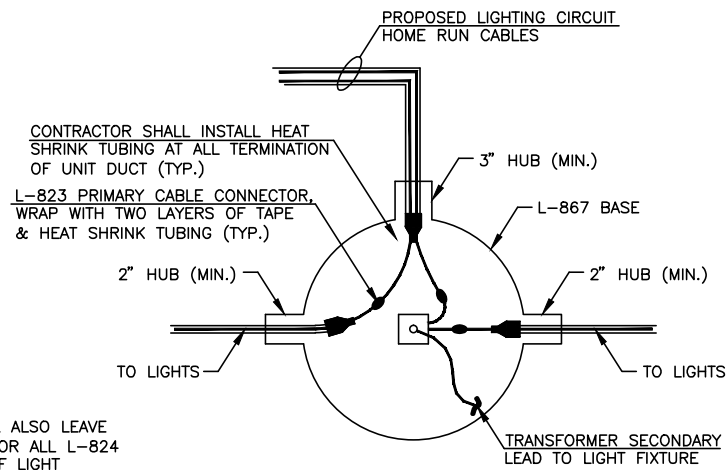


MEDIUM INTENSITY EDGE LIGHT DETAILS

EDGE LIGHT NOTES :

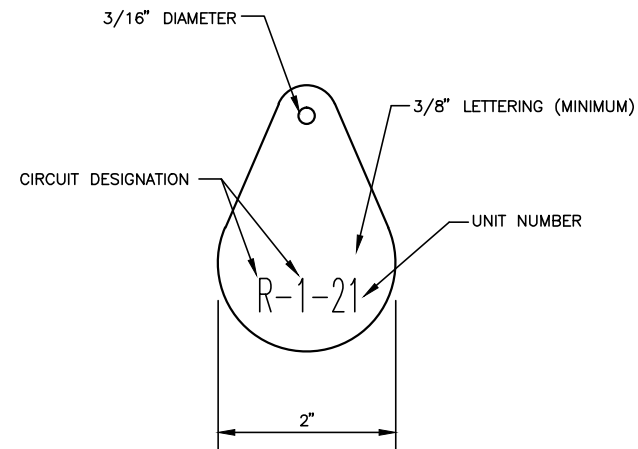
- BREAKING GROOVE OF BREAKABLE COUPLINGS SHALL NOT BE OVER 3 1/2" ABOVE GROUND LINE.
- THE CONCRETE BACKFILL FOR BASE MOUNTED LIGHTS SHALL BE TROWEL FINISHED WITH A 45° BEVELED EDGE WITH THE SURFACE SLOPING TO DRAIN. THE BASE CONCRETE BACKFILL MAY BE PRECAST AT THE CONTRACTOR'S OPTION.
- THE PRIMARY CABLE CONNECTOR JOINTS SHALL BE WRAPPED WITH ONE LAYER OF RUBBER TAPE (SCOTCH NO. 130C) AND ONE LAYER OF PLASTIC TAPE (SCOTCH NO. 88), ONE-HALF LAPPED, EXTENDING 1 1/2" EACH SIDE OF JOINT AND COVERED WITH HEAT SHRINK TUBING.
- A MINIMUM OF THREE FEET OF CABLE SLACK SHALL BE LEFT AT EACH STAKE MOUNTED LIGHT AND A MINIMUM OF THREE FEET OF CABLE SLACK AT EACH BASE MOUNTED LIGHT, HANDHOLE, OR MANHOLE. THIS REQUIRED SLACK WILL BE LEFT ON THE CABLE SIDE OF ALL PRIMARY CONNECTORS AND SPLICES. THIS REQUIRED SLACK WILL BE CONSIDERED INCIDENTAL TO THE CONTRACT.
- ALL MOUNTING BOLTS SHALL BE COATED WITH AN ANTI-SEIZING LUBRICANT.
- CONTRACTOR SHALL INSTALL HEAT SHRINK TUBING AT ALL TERMINATIONS OF UNIT DUCT (TYPICAL).
- THE LIGHT FIXTURE SHALL BE BONDED TO THE LIGHT BASE INTERNAL GROUND LUG VIA A #6 AWG STRANDED COPPER WIRE RATED FOR 600 VOLTS WITH GREEN XHHW INSULATION. THE GROUND WIRE LENGTH SHALL BE SUFFICIENT TO ALLOW THE REMOVAL OF THE LIGHT FIXTURE FROM THE LIGHT BASE FOR ROUTINE MAINTENANCE. SEE THE LIGHT FIXTURE MANUFACTURER'S INSTRUCTIONS FOR PROPER METHODS OF ATTACHING THIS BONDING WIRE.



NOTES:

- CONTRACTOR SHALL ALSO LEAVE 3'-0" OF SLACK FOR ALL L-824 CABLES IN BASE OF LIGHT
- THIS BASE DETAIL SHALL APPLY TO LIGHTING FIXTURES R-1-1 AND T-1-1.

**PROPOSED CIRCUIT CONNECTION DETAIL
BASE MOUNTED LIGHT**



NOTES

- INSTALL A NONCORROSIVE DISC OF 2 INCH MINIMUM DIAMETER WITH NUMBER PERMANENTLY STAMPED, CUT OUT OR ENGRAVED AT EACH LIGHTING UNIT.
- NONCORROSIVE DISC MAY BE ATTACHED TO LIGHT FLANGE WITH SCREW OR UNDER THE HEAD OF THE BASE PLATE BOLT.
- THE CONTRACTOR SHALL NUMBER THE PROPOSED LIGHTS AND SIGNS IN EACH CIRCUIT STARTING AT THE HOMERUN CONTINUING AROUND THE ENTIRE CIRCUIT BACK TO THE HOMERUN.
- AIRFIELD SIGNS SHALL BE TAGGED AND NUMBERED.

IDENTIFICATION TAG DETAIL

CASEY MUNICIPAL AIRPORT CASEY, ILLINOIS	
TYPICAL LIGHTING DETAILS	
HUTCHISON ENGINEERING, INC. JACKSONVILLE, ILLINOIS	
DRAWN BY: R.L.R. DATE : OCTOBER, 2014	ILL. PROJ. NO. 1H8-4369 SBG PROJ. NO. 3-17-SBGP-XX