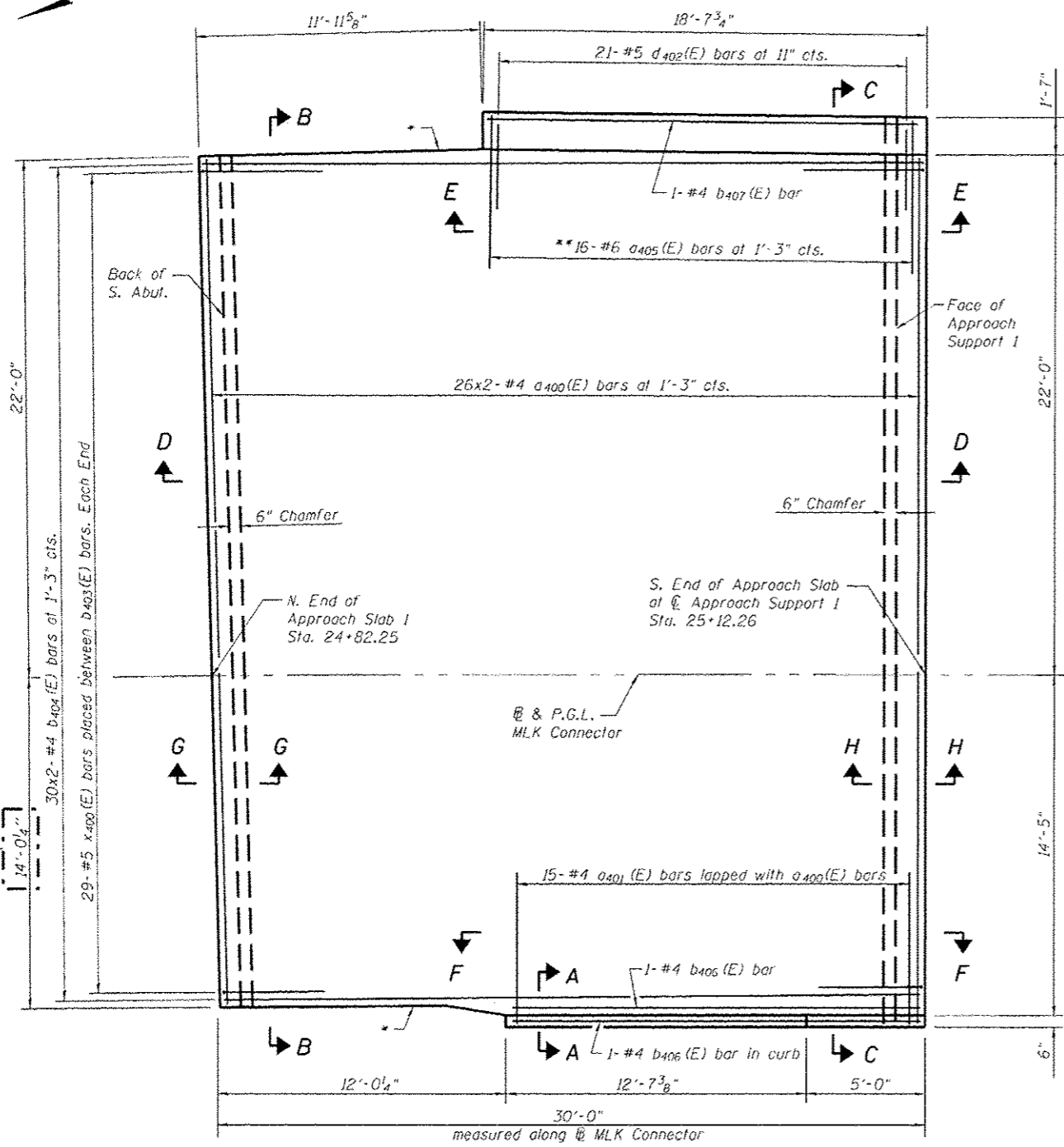
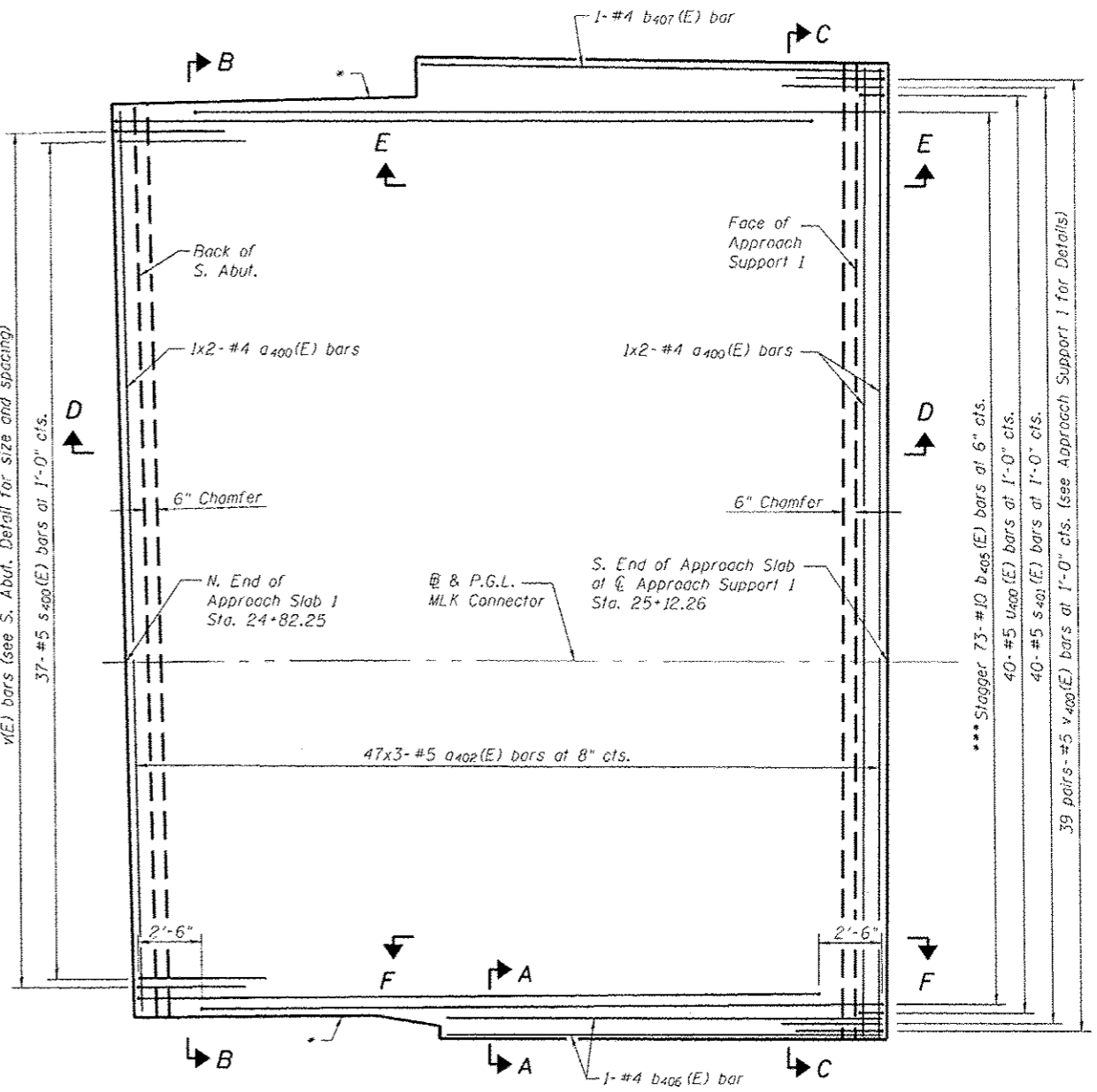


Notes:
 See sheet 33 of 97 for View A-A and Sections B-B, C-C and D-D.
 Dimensions along supports are radial to roadway curve.
 Dimensions along Approach Slab are taken along curve.
 Bars a₄₀₀(E) and a₄₀₂(E) are placed radially.
 See sheet 34 of 97 for Views E-E, F-F, G-G and H-H.
 See sheet 34 of 97 for Bar Bonds and Bill of Material.
 Bars denoted thus, 26x2-#4, indicates 26 lines of bars with 2 lengths of #4 bars per line.



PLAN VIEW

(Showing Top of Slab Reinforcement)



PLAN VIEW

(Showing Bottom of Slab Reinforcement)

¹/₂" Preformed Joint Filler according to Article 1051 of the Standard Specifications; full depth of slab, full length of parapet, typ. each parapet.

**Space between a₄₀₀(E) bars

*** Tilt #10 b₄₀₅(E) bars as required to maintain clearance

MINIMUM BAR LAP

- #4 bar = 2'-0"
- #5 bar = 2'-6"

FILE NAME: X:\2009\2009-MLK\08-02-2015\2015-03-17-2015-ADD\MCDT.DWG



USER NAME - esgeman	DESIGNED - BB	REVISED 1/15/2015 H&S
Illinois Design Firm Number 184.001670	CHECKED - JD	REVISED
PLOT SCALE :	DRAWN - WS	REVISED
PLOT DATE : 1/15/2015	CHECKED - CJF	REVISED

**STATE OF ILLINOIS
DEPARTMENT OF TRANSPORTATION**

**APPROACH SLAB 1 DETAILS
STRUCTURE NO. 082-0349**

SHEET NO. 32 OF 97 SHEETS

F.A.I. RTE.	SECTION	COUNTY	TOTAL SHEETS	SHEET NO.
64	B2-U,416-1	ST. CLAIR	406	127
CONTRACT NO. 76G09			ILLINOIS FED. AID PROJECT	