

HIGHWAY STANDARDS

000001-06	STANDARD SYMBOLS, ABBREVIATIONS AND PATTERNS
001001-02	AREAS OF REINFORCEMENT BARS
280001-07	TEMPORARY EROSION CONTROL SYSTEMS
420001-08	PAVEMENT JOINTS
420101-05	24 (7.2 M) JOINTED PCC PAVEMENT
424001-08	PERPENDICULAR CURB RAMPS FOR SIDEWALKS
424006-02	DIAGONAL CURB RAMPS FOR SIDEWALKS
424011-02	CORNER PARALLEL CURB RAMPS FOR SIDEWALKS
424016-02	MID-BLOCK CURB RAMPS FOR SIDEWALKS
424021-03	DEPRESSED CORNER FOR SIDEWALKS
602301-04	INLET, TYPE A
602306-03	INLET, TYPE B
602401-03	MANHOLE, TYPE A
602601-03	PRECAST REINFORCED CONCRETE FLAT SLAB TOP
602701-02	MANHOLE STEPS
604001-04	FRAME AND LIDS, TYPE 1
604006-05	FRAME AND GRATE, TYPE 3
604066-02	FRAME AND LID, TYPE 15
604071-05	FRAME AND GRATE, TYPE 20
606001-06	CONCRETE CURB TYPE B AND COMBINATION CONCRETE CURB AND GUTTER
606301-04	PC CONCRETE ISLANDS AND MEDIANS
701301-04	LANE CLOSURE, 2L, 2W, SHORT TIME OPERATIONS
701501-06	URBAN LANE CLOSURE, 2L, 2W, UNDIVIDED
701801-05	LANE CLOSURE, MULTILANE 1W OR 2W CROSSWALK OR SIDEWALK CLOSURE
701901-04	TRAFFIC CONTROL DEVICES
720001-01	SIGN PANEL MOUNTING DETAILS
720006-04	SIGN PANEL ERECTION DETAILS
731001-01	BASE FOR TELESCOPING STEEL SIGN SUPPORT
780001-05	TYPICAL PAVEMENT MARKINGS
805001-01	ELECTRICAL SERVICE INSTALLATION DETAILS
821101-01	LUMINAIRE WIRING DIAGRAM
878001-10	CONCRETE FOUNDATION DETAILS
BLR 21-9	TYPICAL APPLICATION OF TRAFFIC CONTROL DEVICES FOR CONSTRUCTION ON RURAL LOCAL HIGHWAYS
BLR 22-7	TYP. APPL. OF T.C.D. FOR RURAL LOC. HWYS. (2-LANE 2 WAY RURAL TRAFF.) (RD. CLOSED TO THRU TRAFF.)

GENERAL NOTES

1. THE NOMINAL THICKNESS FOR BASE AND SURFACE COURSES ARE SHOWN ON THE TYPICAL SECTIONS, STANDARDS, SCHEDULES, OR SPECIAL DETAILS. THE CONSTRUCTED THICKNESS OF THE ABOVE ITEMS SHALL NOT BE LESS THAN 90 PERCENT OF THE NOMINAL THICKNESS AT ANY LOCATION.
2. WHERE SECTION OR SUBSECTION MONUMENTS ARE ENCOUNTERED, THE ENGINEER SHALL BE NOTIFIED BEFORE SUCH MONUMENTS ARE REMOVED. THE CONTRACTOR SHALL PROTECT AND CAREFULLY PRESERVE ALL PROPERTY MARKERS AND MONUMENTS UNTIL THE OWNER AND AN AUTHORIZED SURVEYOR OR AGENT, HAS WITNESSED OR OTHERWISE REFERENCED THEIR LOCATION.
3. ALL ELEVATIONS SHOWN REFER TO THE U.S.G.S. DATUM AT SEA LEVEL, UNLESS OTHERWISE NOTED.
4. UTILITIES ARE SHOWN IN ACCORDANCE WITH THE BEST AVAILABLE INFORMATION, AND THEIR TRUE LOCATION IS NOT GUARANTEED TO BE AS SHOWN ON THE PLANS. IT WILL BE THE CONTRACTOR'S RESPONSIBILITY TO DETERMINE THE EXACT LOCATION OF ALL UTILITIES AND CARRY OUT HIS OR HER OPERATIONS ACCORDINGLY.
5. ADJUSTMENTS OF UTILITY LOCATIONS SHALL BE MADE BY THE OWNER, UNLESS OTHERWISE NOTED.
6. ADDITIONAL DEPTH REQUIRED IN DRAINAGE STRUCTURES DUE TO CONFLICTS WITH OTHER UTILITY LINES WILL BE CONSIDERED INCIDENTAL TO THE UNIT PRICE BID FOR THE DRAINAGE STRUCTURE AND NO ADDITIONAL COMPENSATION WILL BE ALLOWED.
7. ANY REFERENCE TO A STANDARD IN THESE PLANS SHALL BE INTERPRETED TO MEAN THE EDITION, AS INDICATED BY THE SUB-NUMBER ON THE COVER SHEET.
8. ALL DETAILS IN THESE PLANS SHALL GOVERN THE CONSTRUCTION OF THIS PROJECT, AND IN CASE OF CONFLICT WITH ANY STANDARD DRAWINGS INCLUDED, THE SAID DETAILS SHALL GOVERN.
9. THE EXISTING ROAD SIGNS THAT INTERFERE WITH CONSTRUCTION SHALL BE REMOVED AND RELOCATED AS DIRECTED BY THE ENGINEER. THIS WORK WILL NOT BE PAID FOR SEPERATELY BUT SHALL BE CONSIDERED AS PART OF THE CONTRACT AND NO COMPENSATION WILL BE ALLOWED.
10. EXISTING MAILBOXES SHALL BE TEMPORARILY RELOCATED FOR CONTINUED OPERATION AS NECESSARY DURING CONSTRUCTION. MAIL BOXES SHALL BE RELOCATED TO THEIR FINAL LOCATION AFTER CONSTRUCTION AS DIRECTED BY THE ENGINEER. THIS WORK WILL NOT BE PAID FOR SEPERATELY BUT SHALL BE CONSIDERED AS PART OF THE CONTRACT AND NO COMPENSATION WILL BE ALLOWED.
11. THE FOLLOWING MIXTURE REQUIREMENTS ARE APPLICABLE FOR THIS PROJECT:

MIXTURE NUMBER:	1	2	3
LOCATIONS:	6TH, JACKSON, 7TH, & DOUGLAS	6TH, JACKSON, 7TH, & DOUGLAS	6TH, JACKSON, 7TH, & DOUGLAS
MIXTURE USES:	HMA SURFACE COURSE	HMA LEVELING BINDER	HMA BASE COURSE
AC/PG:	PG64-22	PG64-22	PG64-22
DESIGN AIR VOIDS:	4.0% @ N DESIGN = 50	4.0% @ N DESIGN = 50	4.0% @ N DESIGN = 50
MIXTURE COMPOSITION (GRADATION MIXTURE):	IL 9.5	IL 9.5	IL 19.0
FRICTION AGGREGATE:	MIX "C"	N/A	N/A
QUALITY MANAGEMENT:	QC/OA	QC/OA	QC/OA

RATES OF APPLICATION TABLE

AGGREGATE (SURFACE, BASE, BASE, OR BACKFILL)	2.05 TON/CU YD
SUBBASE GRANULAR MATERIAL, TYPE C	1.80 TON/CU YD
STONE DUMPED RIPRAP	1.50 TON/CU YD
HOT-MIX ASPHALT:	
BITUMINOUS MATERIALS (PRIME COAT)	0.05 LB/SO FT (on milled & non-milled HMA & concrete)
	0.025 LB/SO FT (between lifts & on brick)
	0.25 LB/SO FT (on aggregate)
HOT-MIX ASPHALT SURFACE / BINDER	0.056 TON/SO YD*IN
HOT-MIX ASPHALT SURFACE MIX D OR E	0.056 TON/SO YD*IN
SODDING AREAS:	
NITROGEN FERTILIZER NUTRIENT	0.0186 LBS/SO YD
PHOSPHOROUS FERTILIZER NUTRIENT	0.0011 LBS/SO YD
POTASSIUM FERTILIZER NUTRIENT	0.0074 LBS/SO YD
AGRICULTURAL GROUND LIMESTONE	0.000046 TON/SO YD
SUPPLEMENTAL WATERING	0.009 UNITS/SO YD (3 appl. @ 3GAL/ SO YD)
LIME FOR LIME MODIFIED SOILS, 12"	0.02 TON/SO YD
WATER FOR LIME MODIFIED SOILS, 12"	0.007 UNITS/SO YD (1 UNIT = 1000 GAL)
WATER FOR PLANTINGS	1 UNIT = 1000 GAL

FILE NAME = D:\B\F\1\en\100076\Town Square I1EP 003\95 Plans\Current\10076-11-Gen\en\Notes.dgn



USER NAME = seb	DESIGNED - SEB	REVISED - Δ 1-27-15
	DRAWN - SEB	REVISED -
PLOT SCALE = 40.0000' / in.	CHECKED -	REVISED -
PLOT DATE = 9/29/2014	DATE -	REVISED -

**CITY OF PETERSBURG, ILLINOIS
HISTORIC PETERSBURG
TOWN SQUARE**

GENERAL NOTES	
SCALE: NONE	SHEET NO. 1 OF 1 SHEETS
STA.	TO STA.

F.A. RTE.	SECTION	COUNTY	TOTAL SHEETS	SHEET NO.
	09-00020-00-RS	MENARD	77	2
			CONTRACT NO. 93627	
ILLINOIS FED. AID PROJECT				

FILE NAME = G:\101\10076\Town Square ITP 003\05 Plans\Current\10076-ght-Summary.dgn

CODE NO.	ITEM	UNIT	TOTAL QUANTITY	CONSTRUCTION CODE							
				FEDERALLY FUNDED	NON-PARTICIPATING						
				0031 URBAN							
20100110	TREE REMOVAL (6 TO 15 UNITS DIAMETER)	UNIT	60	60							
20200100	EARTH EXCAVATION	CU YD	775	775							
20800150	TRENCH BACKFILL	CU YD	17	17							
25200110	SODDING, SALT TOLERANT	SO YD	285	285							
25200200	SUPPLEMENTAL WATERING	UNIT	9	9							
28000510	INLET FILTERS	EACH	12	12							
31100300	SUBBASE GRANULAR MATERIAL, TYPE A 4"	SO YD	3636	3636							
31101000	SUBBASE GRANULAR MATERIAL, TYPE B	TON	13	13							
35501320	HOT-MIX ASPHALT BASE COURSE, 9"	SO YD	2592	2592							
40201000	AGGREGATE FOR TEMPORARY ACCESS	TON	100	100							
40600625	LEVELING BINDER (MACHINE METHOD), N50	TON	229	229							
40600990	TEMPORARY RAMP	SO YD	192	192							
Δ 40603310	HOT-MIX ASPHALT SURFACE COURSE, MIX "C", N50	TON	389	389							
42000564	PORTLAND CEMENT CONCRETE PAVEMENT 14" (JOINTED)	SO YD	328	328							
42001300	PROTECTIVE COAT	SO YD	1251	1251							

* - SEE SPECIAL PROVISIONS

Δ - SPECIALTY ITEMS



USER NAME = srb	DESIGNED -	REVISED - Δ 1-27-15
PLOT SCALE = 40,0000' / in.	DRAWN -	REVISED -
PLOT DATE = 9/29/2014	CHECKED -	REVISED -
	DATE -	REVISED -

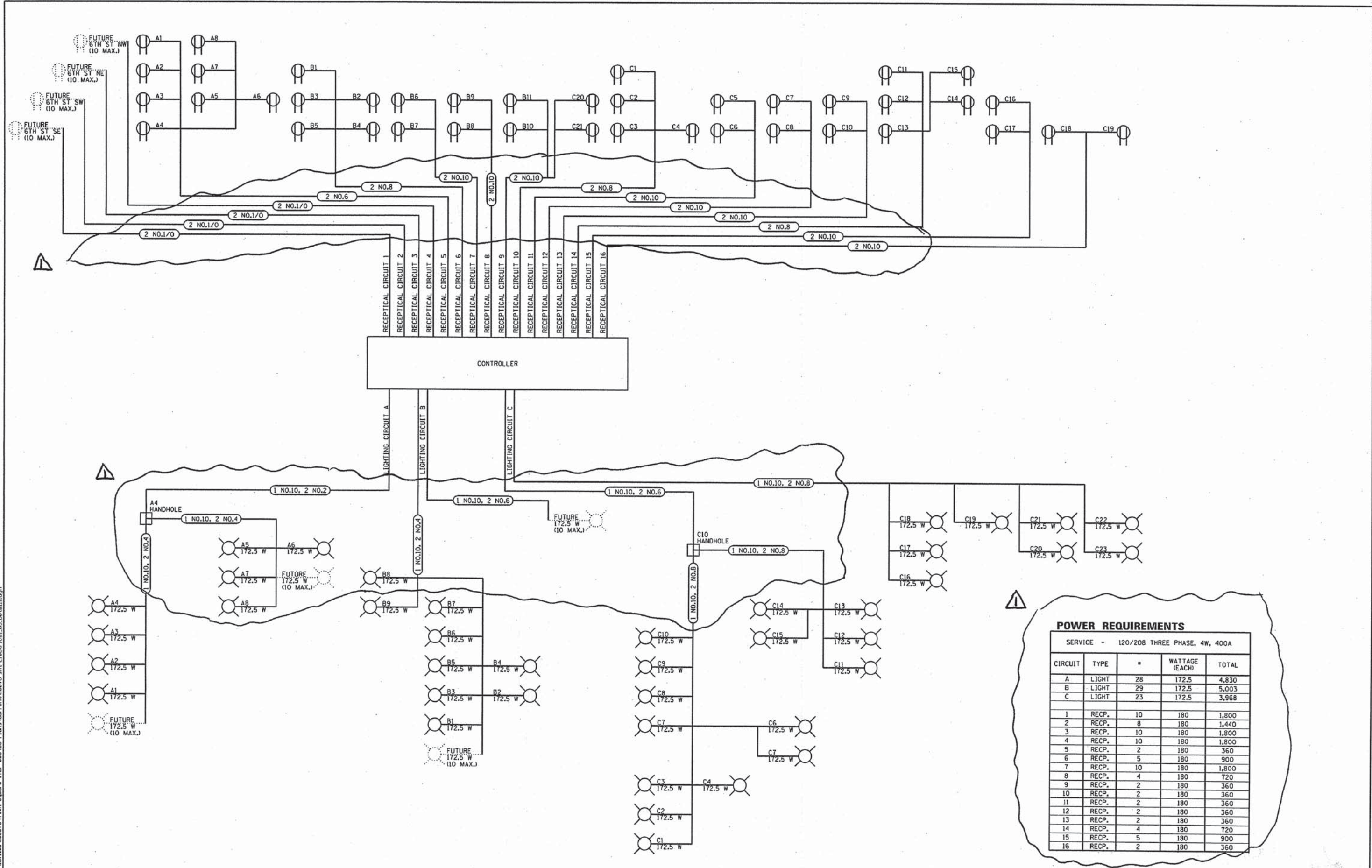
**CITY OF PETERSBURG, ILLINOIS
HISTORIC PETERSBURG
TOWN SQUARE**

SUMMARY OF QUANTITIES

SCALE: NONE SHEET NO. 1 OF 6 SHEETS STA. TO STA.

F.A. RTE.	SECTION	COUNTY	TOTAL SHEETS	SHEET NO.
	09-00020-00-RS	MENARD	77	3
CONTRACT NO. 93627				
ILLINOIS FED. AID PROJECT				

FILE NAME = D:\Projects\090076\Town Square I.T.E.P. 0903.085 Plans\Current\09076-int-Electrical_03.Dwg.dwg



POWER REQUIREMENTS

SERVICE - 120/208 THREE PHASE, 4W, 400A

CIRCUIT	TYPE	#	WATTAGE (EACH)	TOTAL
A	LIGHT	28	172.5	4,830
B	LIGHT	29	172.5	5,003
C	LIGHT	23	172.5	3,968
1	RECP.	10	180	1,800
2	RECP.	8	180	1,440
3	RECP.	10	180	1,800
4	RECP.	10	180	1,800
5	RECP.	2	180	360
6	RECP.	5	180	900
7	RECP.	10	180	1,800
8	RECP.	4	180	720
9	RECP.	2	180	360
10	RECP.	2	180	360
11	RECP.	2	180	360
12	RECP.	2	180	360
13	RECP.	2	180	360
14	RECP.	4	180	720
15	RECP.	5	180	900
16	RECP.	2	180	360

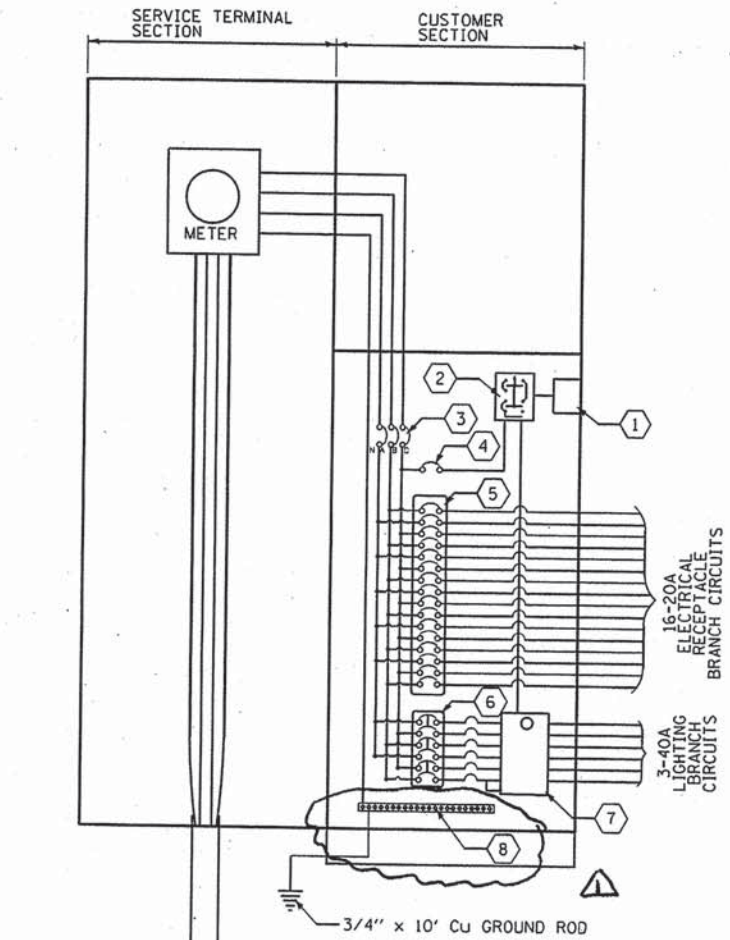
KLINGNER & ASSOCIATES, P.C.
Engineers • Architects • Surveyors

USER NAME = aeb
DESIGNED - KAE
DRAWN - SEB
CHECKED - RMV
PLOT DATE = 12/18/2014
REVISIONS:
REVISION - SEB - 12/18/14
REVISION - *1-27-15*
REVISION -
REVISION -

**CITY OF PETERSBURG, ILLINOIS
HISTORIC PETERSBURG
TOWN SQUARE**

**LIGHTING PLAN
LIGHTING SCHEDULES**
SCALE: NONE SHEET NO. OF SHEETS STA. TO STA.

F.A. RTE. SECTION COUNTY TOTAL SHEETS SHEET NO.
09-0020-00-RS MENARD 77 44
CONTRACT NO. 93627
ILLINOIS FED. AID PROJECT

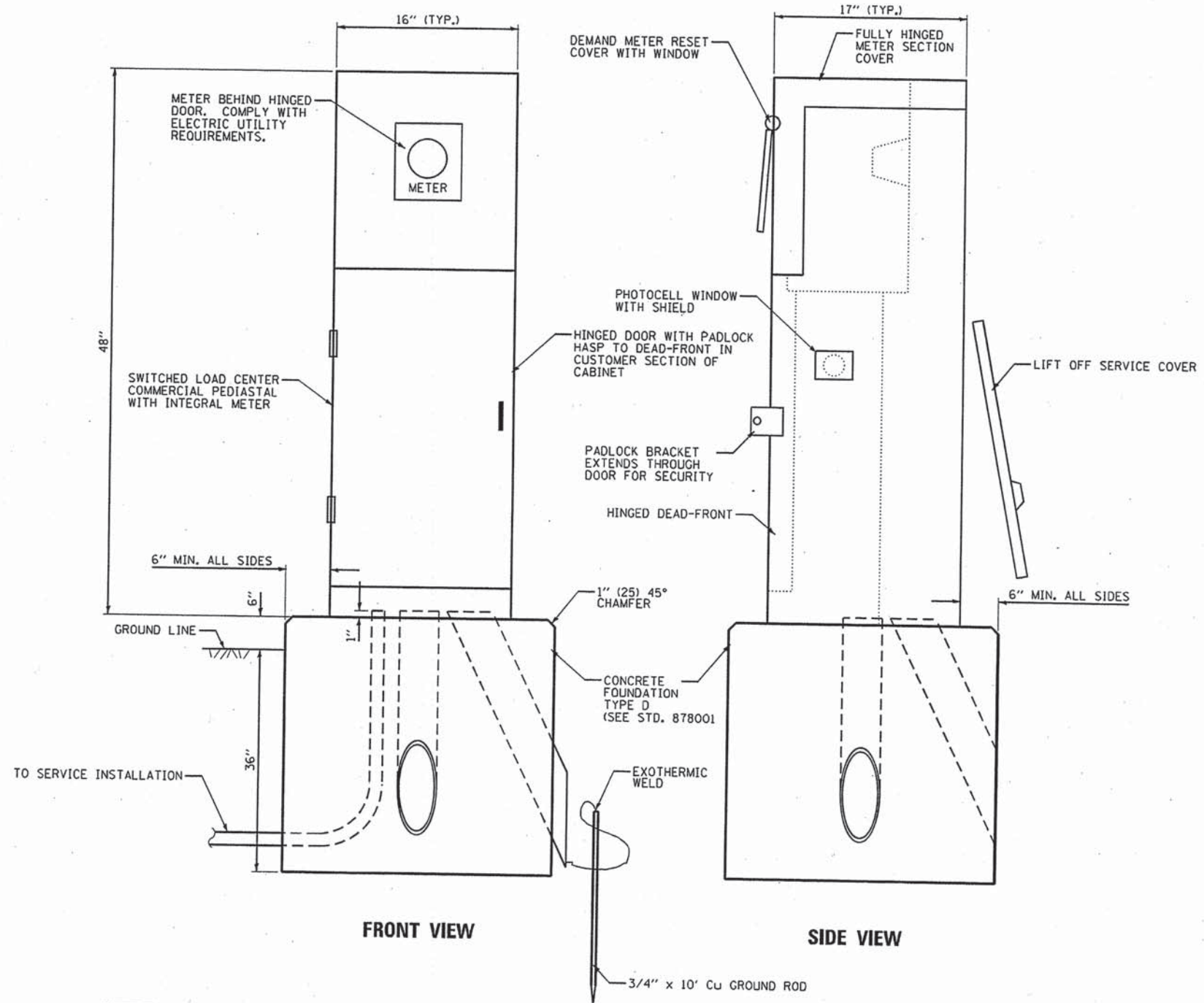


NOTES:
 1) DRAWING IS SCHEMATIC REPRESENTATION OF ELECTRICAL INSTALLATION.
 2) ROUTE GROUND WIRE (EGC) IN EACH CONDUIT.

ELECTRICAL KEY NOTES

- ① - PHOTOCELL WITH INTEGRAL SURGE ARRESTER, MOUNTED BEHIND WINDOW ON SIDE OF CABINET.
- ② - HOA SWITCH MOUNTED THROUGH DEAD-FRONT PANEL WITH ENGRAVED NAMEPLATE AS DETAILED.
- ③ - 200 AMP MOLDED CASE CIRCUIT BREAKER.
- ④ - 15 AMP, 1-POLE CIRCUIT BREAKER FOR LIGHT CONTROL CIRCUIT.
- ⑤ - (16) - 20 AMP, 1-POLE CIRCUIT BREAKER FOR ELECTRICAL RECEPTACLES ON LIGHT POLES.
- ⑥ - (3) - 40 AMP, 2-POLE CIRCUIT BREAKER FOR LIGHTS.
- ⑦ - 8-POLE LIGHTING CONTACTOR, 120V COIL, ELECTRICALLY HELD, RATED FOR 40A BALLAST LOAD ON EACH POLE. USE MULTIPLE CONTACTORS IF NECESSARY.
- ⑧ - GROUND BAR

LIGHTING CONTROLLER CABINET - WIRING SCHEMATIC



NOTE:
 EXACT LOCATION OF CONTROL CABINET AND ELECTRIC UTILITY SERVICE TO BE ESTABLISHED BY THE CITY OF PETERSBURG AND THE ELECTRICAL UTILITY COMPANY.

LIGHTING CONTROLLER - PROFILE VIEW

FILE NAME = G:\B\B1\108\108076\Town Square_ITEP_083\08_Plan\Current\108076-Int-Electrical_03_Detail.dgn

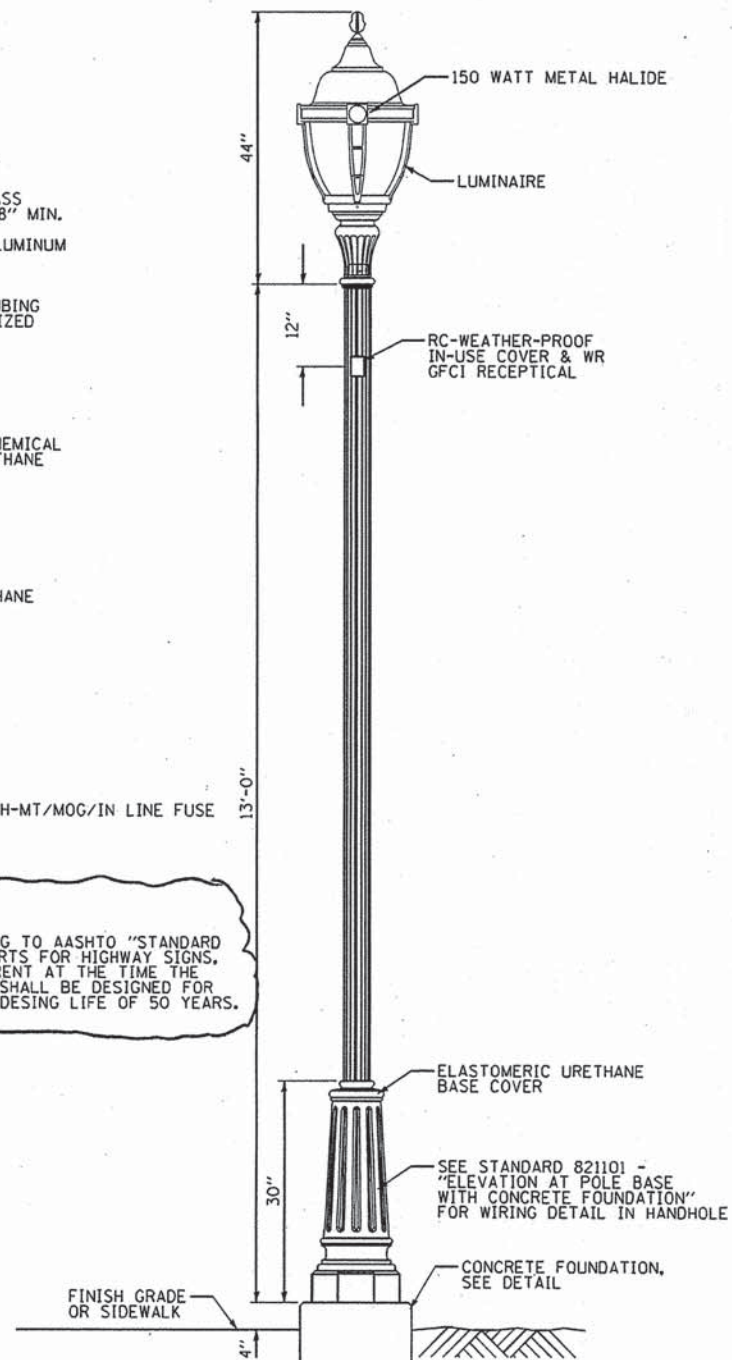
POLE INFORMATION

MANUFACTURER: WHATLEY
 MODEL: RF4
 TOP DIAM.: 4"
 CONSTRUCTION: PULTRUDED FIBERGLASS WALL THICKNESS 0.28" MIN.
 PTR: HEAVY CAST 6061 ALUMINUM
 TENON: 3" OD 3" EXPOSED
 MATERIAL: 3" CARBON MECH. TUBING 0.188" WALL GALVANIZED
 ANCHOR BASE: 7"-9" BOLT CIRCLE
 POLE WEIGHT: 60 LBS
 E.P.A. @ 90 MPH: 13.4
 PAINT: UV AND CLEANING CHEMICAL RESISTANT POLYURETHANE MIN. 10 MIL THICK
 COLOR: BLACK
BASE COVER
 MODEL: D4S
 MATERIAL: ELASTOMERIC URETHANE
 COLOR: BLACK

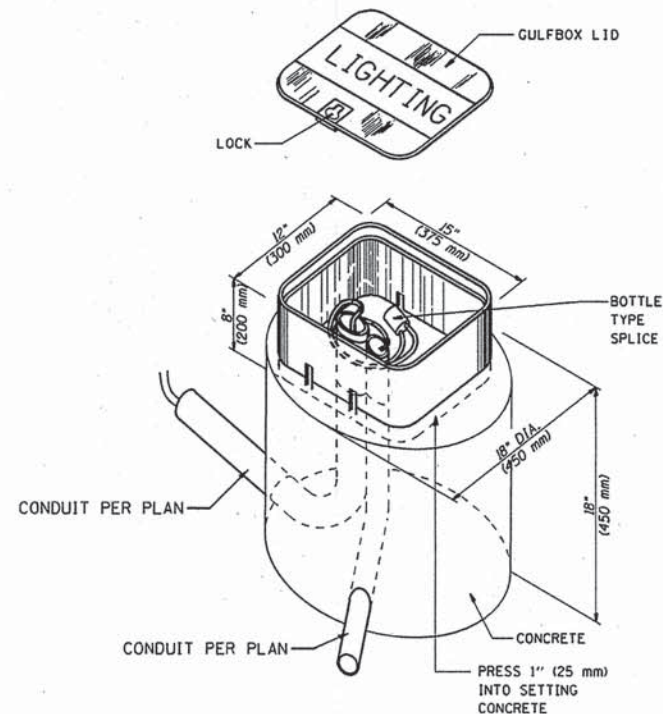
LUMINAIRE INFORMATION

MANUFACTURER: AMERLUX
 MODEL: DU720-F37/HR3/150MH-MT/MOG/IN LINE FUSE
 COLOR: BLACK

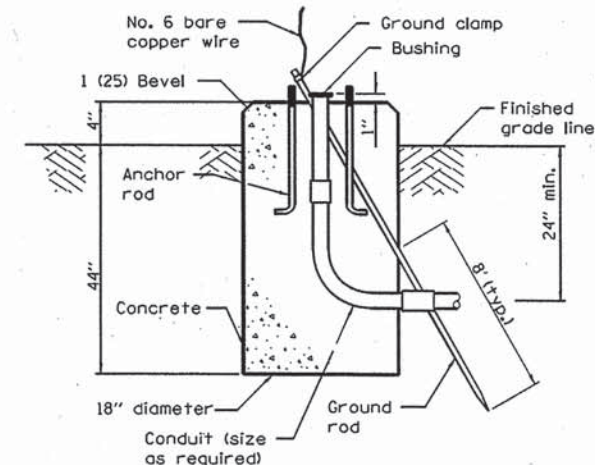
NOTE:
 UNIT SHALL BE MANUFACTURED ACCORDING TO AASHTO "STANDARD SPECIFICATIONS FOR STRUCTURAL SUPPORTS FOR HIGHWAY SIGNS, LUMINAIRES AND TRAFFIC SIGNALS" CURRENT AT THE TIME THE PROJECT IS ADVERTISED. LIGHT POLES SHALL BE DESIGNED FOR 90 MPH WIND VELOCITY AND A MINIMUM DESIGN LIFE OF 50 YEARS.



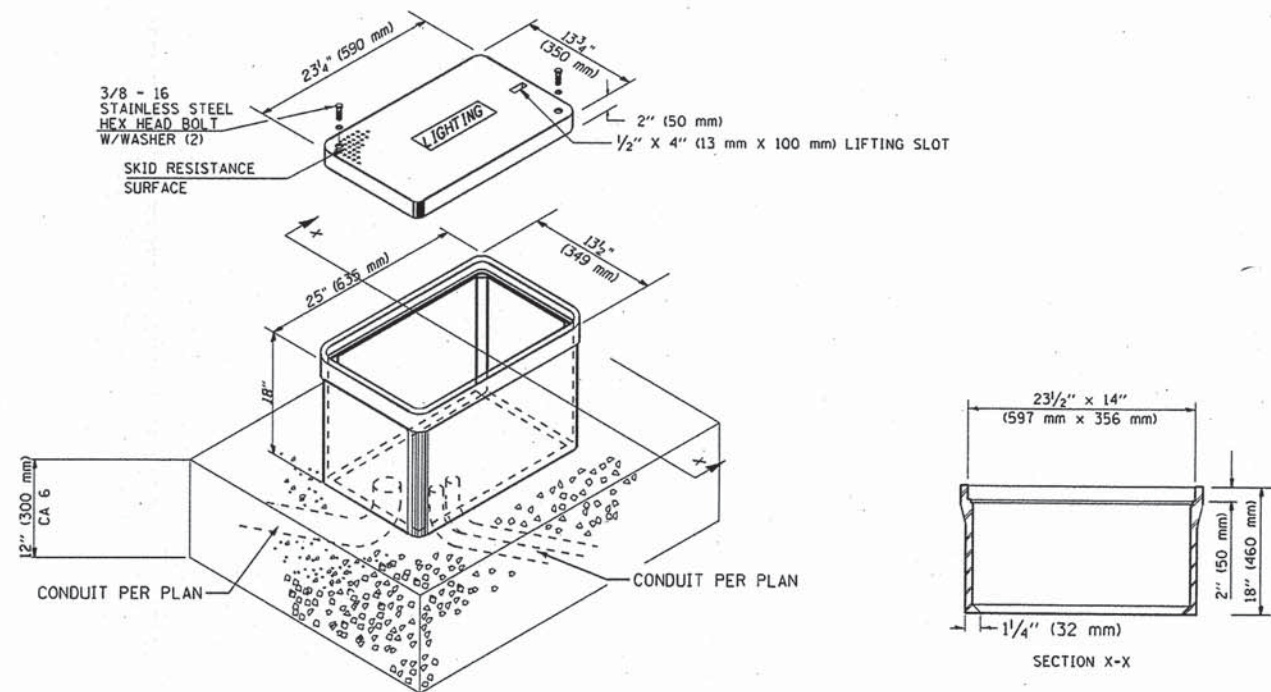
ORNAMENTAL LIGHT UNIT, COMPLETE



GULFBOX JUNCTION DETAIL



LIGHT POLE FOUNDATION, SPECIAL DETAIL



GULFBOX JUNCTION, COMPOSITE CONCRETE DETAIL
 MINIMUM DIMENSIONS

FILE NAME = G:\18071.as\18071\Town Square 11EP_093185 PlanaCurrent\18071-ht-Electrical\03.Detailed.dgn

KLINGNER & ASSOCIATES, P.C.
 Engineers • Architects • Surveyors

USER NAME = sob	DESIGNED - SAB	REVISED - SEB - 12/18/14
	DRAWN - SEB	REVISED - 1-27-15
	CHECKED - RMV	REVISED -
PLDT DATE = 12/18/2014	DATE -	REVISED -

CITY OF PETERSBURG, ILLINOIS
HISTORIC PETERSBURG TOWN SQUARE

LIGHTING PLAN ELECTRICAL DETAILS

SCALE: NONE SHEET NO. OF SHEETS STA. TO STA.

F.A. RTE.	SECTION	COUNTY	TOTAL SHEETS	SHEET NO.
	09-00020-00-RS	MENARD	77	46
CONTRACT NO. 93627			ILLINOIS FED. AID PROJECT	