

GENERAL NOTES

- Fasteners shall be ASTM A325 Type 1, mechanically galvanized bolts in painted areas and ASTM A325 Type 3 in unpainted areas. Bolts $\frac{7}{8}$ in. ϕ , holes $\frac{15}{16}$ in. ϕ , unless otherwise noted.
- Calculated weight of Structural Steel = 141,800 lbs
- All structural steel shall be AASHTO M 270 Grade 50W except expansion joints which shall be AASHTO M 270 Grade 50.
- No field welding is permitted except as specified in the contract documents
- Reinforcement bars designated (E) shall be epoxy coated.
- If the Contractor elects to use cantilever forming brackets on the exterior beams or girders, the brackets shall be placed at the same locations as required for the hardwood blocks in Article 503.06(b) of the Standard Specifications. If additional cantilever forming brackets are required, hardwood blocking shall be wedged between the exterior and first interior beam at each of these additional bracket locations.
- Plan dimensions and details relative to existing plans are subject to nominal construction variations. The Contractor shall field verify existing dimensions and details affecting new construction and make necessary approved adjustments prior to constructions or ordering of materials. Such variations shall not be cause for additional compensation for change in scope of the work, however, the Contractor will be paid for the quantity actually furnished at the unit price bid for the work.
- Bearing seat surfaces shall be constructed or adjusted to the designated elevations within a tolerance of $\frac{1}{8}$ in. (0.01 ft.). Adjustment shall be made either by grinding the surface or by shimming the bearings.
- Structural steel shall only be painted for a distance equal to the depth of embedment into the concrete cap plus 1'-6". Painted areas shall be primed in the shop with a Department approved zinc rich primer. Field painting will not be required.
- Layout of the slope protection system may be varied to suit ground conditions in the field as directed by the Engineer.
- Slipforming of the parapets is not allowed.

INDEX OF SHEETS

- SI-1 General Plan & Elevation
- SI-2 General Data
- SI-3 Stage Construction Details
- SI-4 Temporary Concrete Barrier for Stage Construction
- SI-5 Top of Deck Elevation Plan
- SI-6 Top of Deck Elevations
- SI-7 Top of Approach Slab Elevations, West Approach
- SI-8 Top of Approach Slab Elevations, East Approach
- SI-9 Deck Plan & Cross Section
- SI-10 Diaphragm Details
- SI-11 Parapet Elevations
- SI-12 West Approach Slab Plan
- SI-13 West Approach Slab Details
- SI-14 East Approach Slab Plan
- SI-15 East Approach Slab Details
- SI-16 Framing Plan, & Beam Elevation
- SI-17 Steel Details
- SI-18 Bearing Details
- SI-19 West Abutment Plan & Details
- SI-20 Pier Plan & Elevation
- SI-21 East Abutment Plan & Details
- SI-22 HP Pile Details
- SI-23 Metal Shell Pile Details
- SI-24 Bar Splicer Assembly
- SI-25 Soil Boring Logs, 1 of 2
- SI-26 Soil Boring Logs, 2 of 2

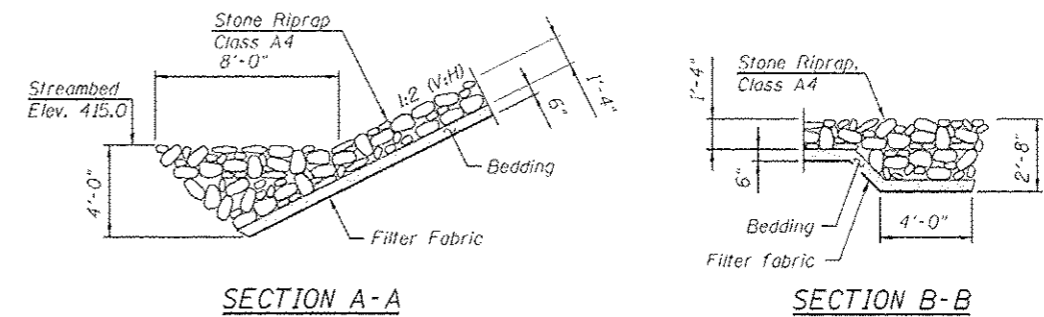
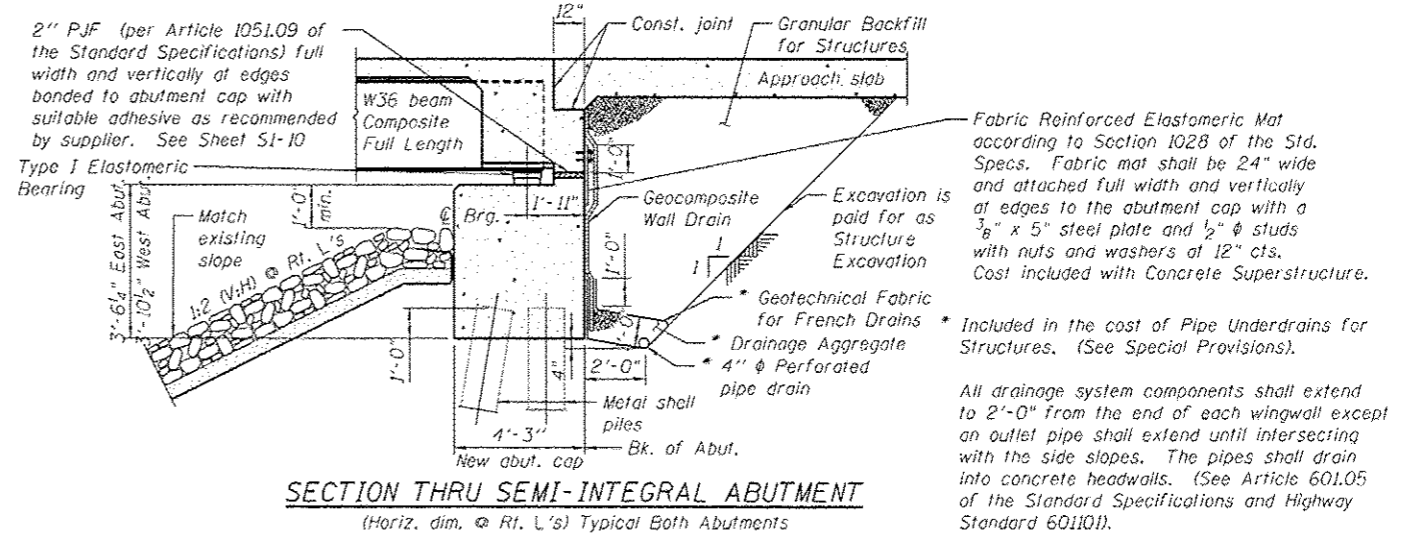
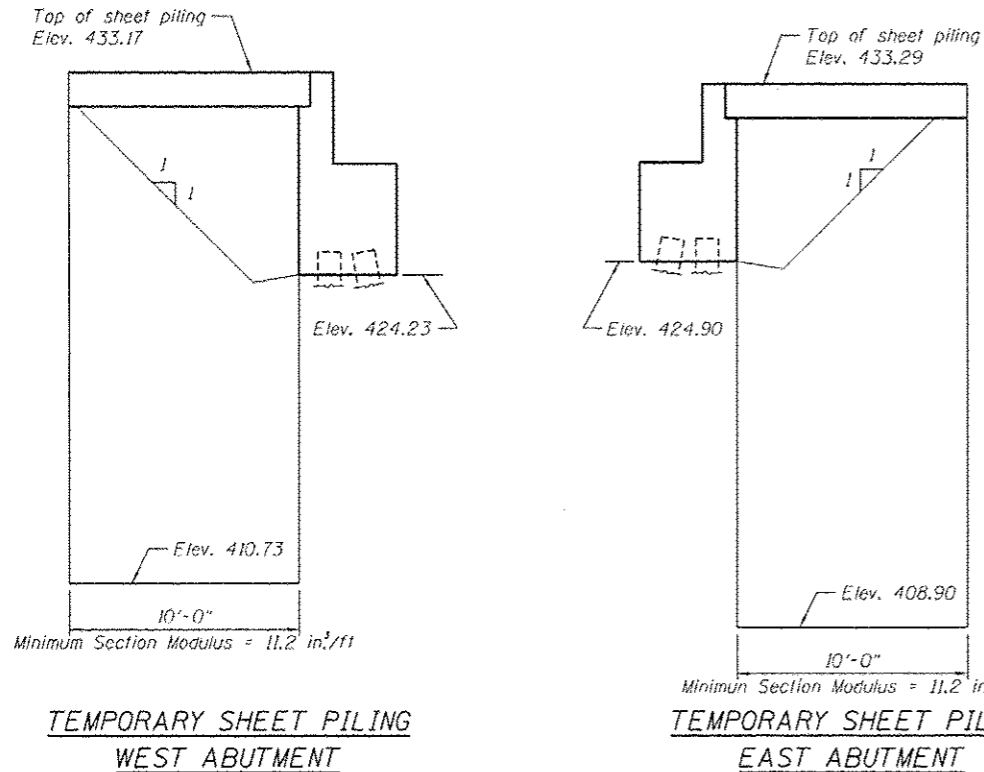
TOTAL BILL OF MATERIALS

ITEM	UNIT	SUPER	SUB	TOTAL
Stone Riprap, Class A4	Sq Yd		29	29
Filter Fabric	Sq Yd		29	29
Removal of Existing Superstructures	Each		1	1
Concrete Removal	Cu Yd		90.8	90.8
Structure Excavation	Cu Yd		241.2	241.2
Concrete Structures	Cu Yd	28.4	80.3	108.7
Concrete Superstructure	Cu Yd	366.5		366.5
Bridge Deck Grooving	Sq Yd	897.1		897.1
Concrete Encasement	Cu Yd		14.1	14.1
Protective Coat	Sq Yd	1,114		1,114
Furnishing and Erecting Structural Steel	L Sum	0,020		0,020
Stud Shear Connectors	Each	3,600		3,600
Reinforcement Bars, Epoxy Coated	Pound	91,730	7,260	98,990
Bar Splicers	Each	589	60	649
Furnishing Metal Shell Piles 12" X 0.250"	Foot		134	134
Furnishing Steel Piles HP14x73	Foot		345	345
Driving Piles	Foot		479	479
Test Pile Steel HP14x73	Each		1	1
Name Plates	Each	1		1
Elastomeric Bearing Assembly, Type I	Each		12	12
Anchor Bolts, 1"	Each		24	24
Anchor Bolts, 1 1/4"	Each		12	12
Geocomposite Wall Drain	Sq Yd		94.3	94.3
Granular Backfill for Structures	Cu Yd		195.3	195.3
Temporary Sheet Piling	Sq Ft		468	468
Approach Slab Removal	Sq Yd			263.3
Pipe Underdrains for Structures 4"	Foot		100	100

STATION 34+36.46
RE-BUILT 20... BY
STATE OF ILLINOIS
F.A.P. RT. 745 SEC 123B-2
LOADING AASHTO HL-93
STR. NO. 075-0128

NAME PLATE

Note:
Existing Name Plate shall be cleaned and relocated next to new Name Plate. Cost included with Name Plates.



Note:
If the Contractor chooses to alter the temporary cantilevered sheet piling design requirements shown on the plans, a design submittal including plan details and calculations will be required for review and acceptance by the Engineer.

FILE NAME: \\P:\S\2014\72858-01\GENNOTE.DWG, USER: JLR, DATE: 11/25/2014, DESIGNED: SNB, CHECKED: JLR, REVISIONS: 1, 11/25/2014, ADDENDUM NO. 1, STATE OF ILLINOIS DEPARTMENT OF TRANSPORTATION, PROJECT: RT. 745 SEC 123B-2, SHEET: SI-2 OF 26 SHEETS, CONTRACT NO. 72858

exp U.S. Services Inc. CHICAGO, IL BUILDING - EARTH & ENVIRONMENT - ENERGY INDUSTRIAL - INFRASTRUCTURE - SUSTAINABILITY	USER NAME: JLR	DESIGNED: SNB	REVISIONS: 1, 11/25/2014, ADDENDUM NO. 1	STATE OF ILLINOIS DEPARTMENT OF TRANSPORTATION	GENERAL DATA SHEET NO. SI-2 OF 26 SHEETS	F.A.P. RT. 745	SECTION 123B-2	COUNTY PIKE	TOTAL SHEETS 782	SHEET NO. 357
	DATE: 11/25/2014	CHECKED: JLR	REVISIONS:			SN 075-0128	CONTRACT NO. 72858			