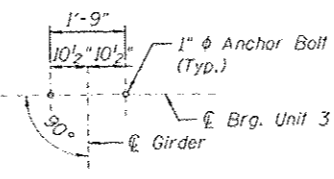


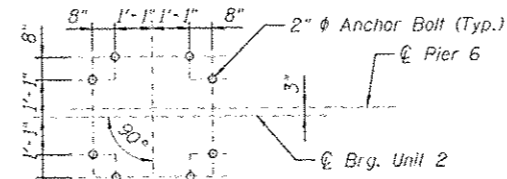
DETAIL 2

VESSEL COLLISION FORCE  
FOR EXTREME EVENT II LOAD COMBINATION

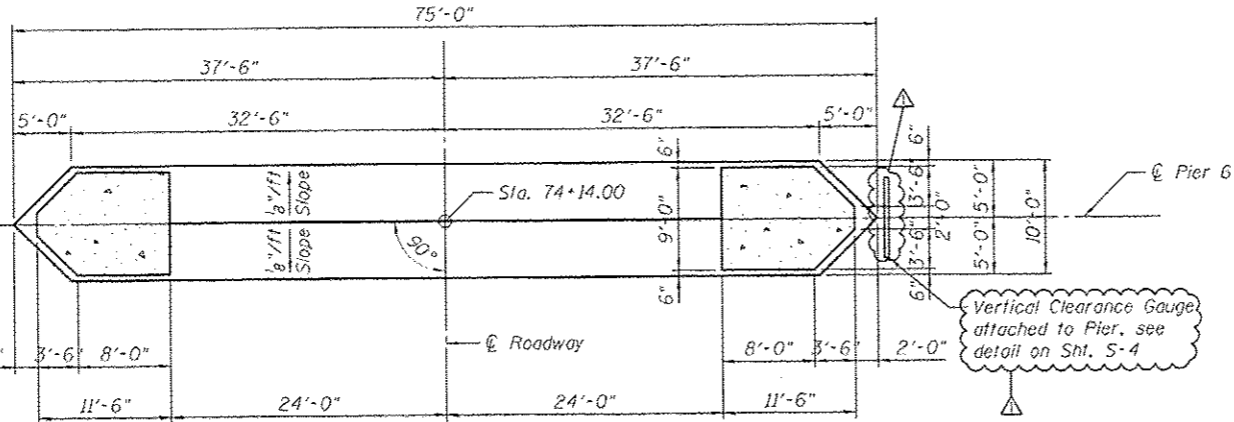
	Case 1	Case 2
Static load	3800 K	1900 K
Elevation	435 ft	435 ft
Direction	Along $\phi$ Pier	Along $\phi$ IL104



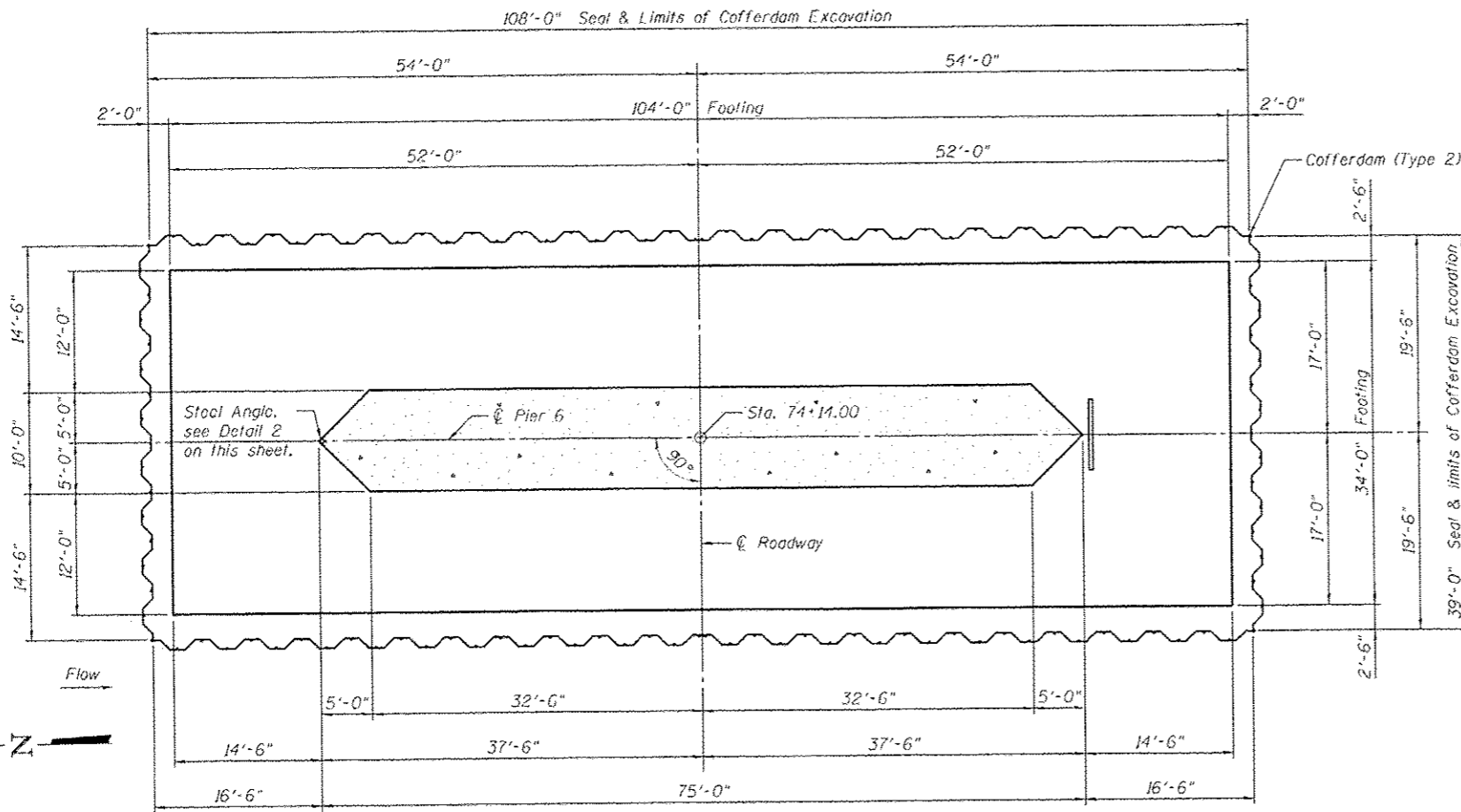
ANCHOR BOLT LAYOUT  
Layout at Girders 1 thru 6



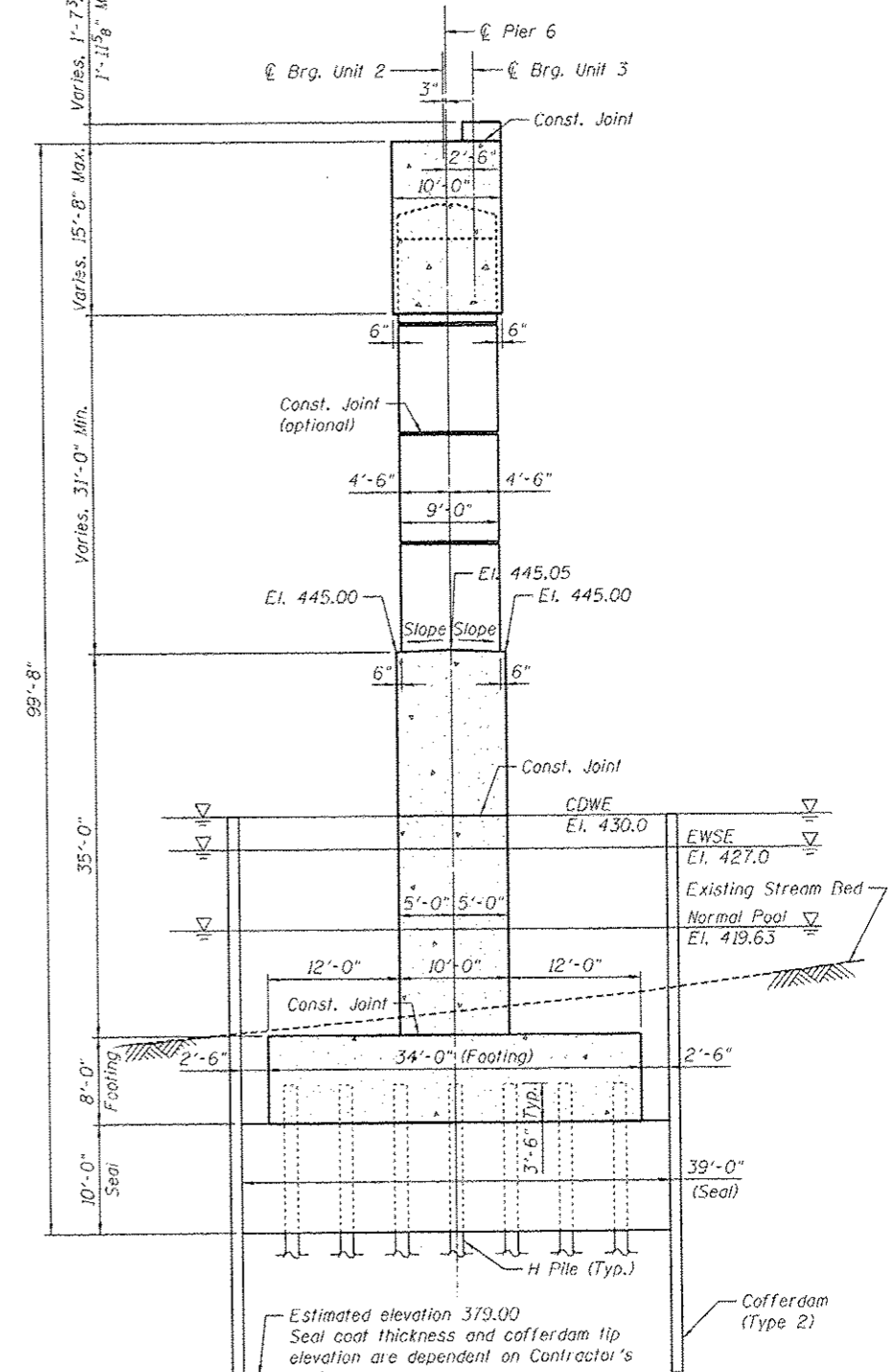
ANCHOR BOLT LAYOUT  
Layout at Tie Girders



PLAN SECTION C-C



PLAN SECTION B-B



SECTION A-A

Notes:

1. CDWE denotes Cofferdam Design Water Elevation.
2. For remainder of notes, see Sht. S-115.

X:\Projects\72858-001\PIER.DGN, \659625-72658-001\PIER.DGN, \ALLEN.M\72858-001\BORDER.DGN, \WEBSTER.72658-001\PIER.SHT.DGN  
 X:\Projects\72858-001\PIER.DGN, \659625-72658-001\PIER.DGN, \ALLEN.M\72858-001\BORDER.DGN, \WEBSTER.72658-001\PIER.SHT.DGN  
 X:\Projects\72858-001\PIER.DGN, \659625-72658-001\PIER.DGN, \ALLEN.M\72858-001\BORDER.DGN, \WEBSTER.72658-001\PIER.SHT.DGN  
 11-17-2014, 17:44:02  
 exp U.S. Services Inc.  
 CHICAGO, IL 60606  
 EXPANSION OF EARLY ENVIRONMENT-ENERGY  
 INDUSTRIAL-INFRASTRUCTURE-SUSTAINABILITY

FILE NAME =	USER NAME =	DESIGNED - HYP, SGC	REVISED - $\Delta$ ADDENDUM NO. 1, 11/25/2014
	DATE = 11/25/2014	CHECKED - RSN	REVISED -
	PLOT SCALE =	DRAWN - FD	REVISED -
	PLOT DATE =	CHECKED - SGC	REVISED -

STATE OF ILLINOIS  
DEPARTMENT OF TRANSPORTATION

PIER 6  
PLAN AT FOOTING LEVEL & SECTIONS

SHEET NO. 5-116 OF 146 SHEETS

F.A.P. RTE.	SECTION	COUNTY	TOTAL SHEETS	SHEET NO.
745	1238-2	MORGAN	782	497
SN 069-0525		CONTRACT NO. 72B58		
ILLINOIS FED. AID PROJECT				