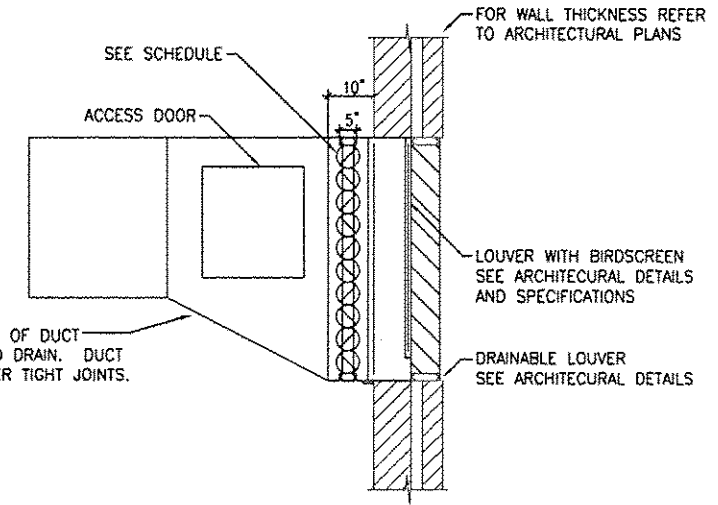


HVAC PLAN
SCALE: 1/4" = 1'-0"



1 EXTERIOR WALL DAMPER DETAIL
HV-1 N.T.S.

TAG	LOCATION	SERVING SYSTEM	SERVICE	CFM	MIN FREE AREA SQ. FT.	MAX FPM THRU FREE AREA	SPD IN W.C.	LOUVER DIMENSION WxHxD, IN	MANUFACTURER AND MODEL	REMARKS
LV-1	PUMP ROOM	EF-1	INTAKE	1,400	2.92	479	0.05"	24"x40"x6"	RUSKIN #ELF6375DX	1 - 4, 6
LV-2	ELEC ROOM	SF-1	INTAKE	440	1.22	361	0.05"	24"x16"x6"	RUSKIN #ELF6375DX	1 - 4
LV-3	PUMP ROOM	EF-1	EXHAUST	1,400	1.89	741	0.06"	24"x24"x6"	RUSKIN #ELF6375DX	1 - 4, 6
RH-1	ELEC ROOM	SF-1	RELIEF	440	1.45	307	0.01"	29"Øx12.75"H 16"Ø NECK	GREENHECK #GRSR-16	2 - 5
BV-1	ELEC ROOM	-	DRAIN	N/A	N/A	N/A	-	SIZE TO MATCH MASONRY	RUSKIN #BV-100	7

- REMARKS:
1. PROVIDE BIRDSCREEN, DRAINABLE BLADES, AND FLANGED FRAME.
 2. PROVIDE COLOR AND FINISH AS CHOSEN BY ENGINEER.
 3. VERIFY THE EXACT MOUNTING HEIGHT, LOCATION, AND SIZE WITH THE ARCHITECTURAL DRAWINGS.
 4. PROVIDE MOTORIZED DAMPER. MOTORIZED DAMPERS SHALL INCLUDE 120V ACTUATOR, INTERLOCKED WITH ASSOCIATED FAN.
 5. PROVIDE 12" ROOF CURB, BIRD AND INSECT SCREEN.
 6. PROVIDE EQUIPMENT SUITABLE FOR CLASS 1, DIVISION II HAZARDOUS ENVIRONMENT.
 7. BRICK VENT TO BE USED FOR DRAINAGE OF DRIP PAN BELOW RH-1. EXTRUDED ALUMINUM WITH INSECT SCREEN.

TAG	LOCATION	SERVICE	CFM	F.S.P. IN WC	FAN DATA				MOTOR DATA				MANUFACTURER AND MODEL	UNIT WT LBS.	REMARKS	
					FAN TYPE	CLASS	RPM	DRIVE	BHP	HP	VOLT	PH				HZ
EF-1	PUMP ROOM	EXHAUST	1400	0.30	IN-LINE CENT	1	964	BELT	0.21	1/4	120	1	60	GREENHECK #BSQ-140	121	1,2,4,5,6
SF-1	ELEC ROOM	SUPPLY	440	0.30	IN-LINE CENT	1	1450	BELT	0.10	1/4	120	1	60	GREENHECK #BCF-106	79	1-4, 7

- REMARKS:
1. VERIFY EXACT VOLTAGE PRIOR TO ORDERING EQUIPMENT.
 2. ELECTRICAL CONTRACTOR SHALL PROVIDE DISCONNECT SWITCH AND LINE WIRING.
 3. PROVIDE STAINLESS STEEL WIREMESH GUARD ON FAN OUTLET.
 4. PROVIDE WALL HOUSING WITH FILTER RACK.
 5. PROVIDE MOTOR COVER AND EXPLOSION-PROOF, HIGH EFFICIENCY MOTOR.
 6. PROVIDE EQUIPMENT SUITABLE FOR CLASS 1, DIVISION II HAZARDOUS ENVIRONMENT.
 7. MOUNT FAN ABOVE LIGHTING WITHIN SPACE AND 9'-4" AFF TO PROVIDE ACCESS TO MCC EQUIPMENT. COORDINATE WITH ELECTRICAL CONTRACTOR.

DAMPER TAG	EQUIPMENT SERVING	DESIGN FLOW RATE (CFM)	DAMPER SIZE
D-LV1	LV-1	1400	24"x36"
D-LV2	LV-2	440	24"x16"
D-LV3	LV-3	1400	24"x24"
D-RH1	RH-1	440	16"x16"

- FAN CONTROLS:
- SF-1 TO RUN WHEN THERMOSTAT GOES ABOVE SETPOINT OF 85°F (ADJ.).
- EF-1 TO RUN ON:
1. ALERT FROM GAS DETECTION SYSTEM. SYSTEM TO RUN FOR A MINIMUM OF 30 MINUTES OR WHEN GAS DETECTION SYSTEM STOPS SENDING A SIGNAL.
 2. THERMOSTAT GOES ABOVE SETPOINT OF 85°F (ADJ.).
 3. LIGHTING IN THE GRADE LEVEL PUMP ROOM ARE TURNED TO THE "ON" POSITION. FAN TO TURN OFF WHEN LIGHTS TURN OFF.
- THE OUTDOOR AIR INTAKE DAMPER (D-LV1) ACTUATOR & EXHAUST LOUVER DAMPER (D-LV3) TO BE ENERGIZED AND OPEN UPON FAN (EF-1) OPERATION. THESE DAMPERS TO BE NORMALLY CLOSED.

TAG	LOCATION	MOUNTING	THERMOSTAT MOUNTING	UNIT SIZE	HTG. ELEMENT			FAN/MOTOR DATA			DISCHARGE	UNIT DATA				MANUFACTURER AND MODEL	REMARKS
					KW	LAT °F @ 70°F EAT	CFM	QTY	HP	DIMENSIONS WxHxD		WEIGHT, LBS	V	PH	HZ		
UH-1	PUMP ROOM	SUSP	UNIT	03	3	83	700	1	-	HORIZ	18.5"x19"x21"	133	480	3	60	QMARK #GUX3004832	1-5
UH-2	PUMP ROOM	SUSP	UNIT	03	3	83	700	1	-	HORIZ	18.5"x19"x21"	133	480	3	60	QMARK #GUX3004832	1-5
UH-3	ELEC ROOM	SUSP	UNIT	03	3	97	350	1	1/100	HORIZ	16"x14"x7.5"	27	480	3	60	QMARK #MUH-03-41	1-4

- REMARKS:
1. VERIFY EXACT VOLTAGE PRIOR TO ORDERING EQUIPMENT.
 2. ELECTRICAL CONTRACTOR SHALL PROVIDE DISCONNECT SWITCH AND LINE WIRING.
 3. PROVIDE LOUVER DIFFUSER ON UNIT HEATERS DISCHARGE.
 4. PROVIDE WALL/CEILING BRACKET AS REQUIRED FOR PROPER MOUNTED OF UNIT. MOUNT AT A MINIMUM OF 7'-6" AFF.
 5. PROVIDE EQUIPMENT SUITABLE FOR CLASS 1, DIVISION II HAZARDOUS ENVIRONMENT.