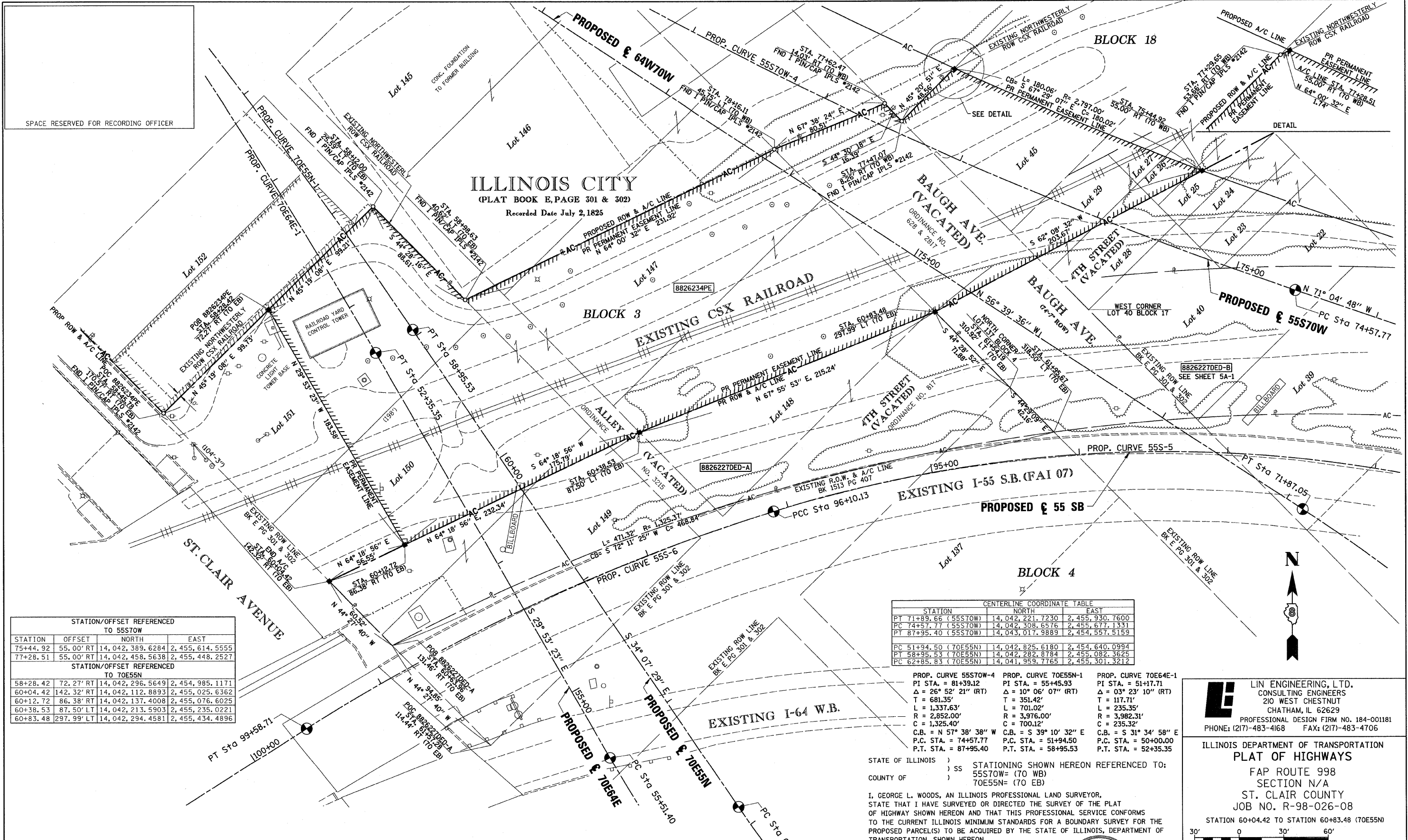


PART OF THE SW 1/4 OF SECTION 7, T2N, R9W OF THE 3RD PM, ST. CLAIR COUNTY, ILLINOIS



STATION/OFFSET REFERENCED TO 55STOW				
STATION	OFFSET	NORTH	EAST	
75+44.92	55.00' RT	14,042,389.6284	2,455,614.5555	
77+28.51	55.00' RT	14,042,458.5638	2,455,448.2527	
STATION/OFFSET REFERENCED TO 70E55N				
58+28.42	72.27' RT	14,042,296.5649	2,454,985.1171	
60+04.42	142.32' RT	14,042,112.8893	2,455,025.6362	
60+12.72	86.38' RT	14,042,137.4008	2,455,076.6025	
60+38.53	87.50' LT	14,042,213.5903	2,455,235.0221	
60+83.48	297.99' LT	14,042,294.4581	2,455,434.4896	

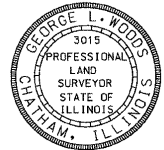
STATION	CENTERLINE COORDINATE TABLE	
	NORTH	EAST
PT 71+89.66 (55STOW)	14,042,221.7230	2,455,930.7600
PC 74+57.77 (55STOW)	14,042,308.6576	2,455,677.1331
PT 87+95.40 (55STOW)	14,043,017.9889	2,454,557.5159
PC 51+94.50 (70E55N)	14,042,825.6180	2,454,640.0994
PT 58+95.53 (70E55N)	14,042,282.8784	2,455,082.3625
PC 62+85.83 (70E55N)	14,041,959.7765	2,455,301.3212

PROP. CURVE 55STOW-4	PROP. CURVE 70E55N-1	PROP. CURVE 70E64E-1
PI STA. = 81+39.12	PI STA. = 55+45.93	PI STA. = 51+17.71
Δ = 26° 52' 21" (RT)	Δ = 10° 06' 07" (RT)	Δ = 03° 23' 10" (RT)
T = 681.35'	T = 351.42'	T = 117.71'
L = 1,337.63'	L = 701.02'	L = 235.35'
R = 2,852.00'	R = 3,976.00'	R = 3,982.31'
C = 1,325.40'	C = 700.12'	C = 235.32'
C.B. = N 57° 38' 38" W	C.B. = S 39° 10' 32" E	C.B. = S 31° 34' 58" E
P.C. STA. = 74+57.77	P.C. STA. = 51+94.50	P.C. STA. = 50+00.00
P.T. STA. = 87+95.40	P.T. STA. = 58+95.53	P.T. STA. = 52+35.35

STATE OF ILLINOIS )  
 COUNTY OF )  
 STATIONING SHOWN HEREON REFERENCED TO:  
 55STOW= (70 WB)  
 70E55N= (70 EB)

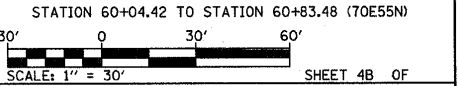
I, GEORGE L. WOODS, AN ILLINOIS PROFESSIONAL LAND SURVEYOR, STATE THAT I HAVE SURVEYED OR DIRECTED THE SURVEY OF THE PLAT OF HIGHWAY SHOWN HEREON AND THAT THIS PROFESSIONAL SERVICE CONFORMS TO THE CURRENT ILLINOIS MINIMUM STANDARDS FOR A BOUNDARY SURVEY FOR THE PROPOSED PARCEL(S) TO BE ACQUIRED BY THE STATE OF ILLINOIS, DEPARTMENT OF TRANSPORTATION, SHOWN HEREON.

DATED \_\_\_\_\_  
 GEORGE L. WOODS, PLS NO. 3015  
 LICENSE EXPIRATION DATE: 11/30/2010



**Lin Engineering, Ltd.**  
 CONSULTING ENGINEERS  
 210 WEST CHESTNUT  
 CHATHAM, IL 62629  
 PROFESSIONAL DESIGN FIRM NO. 184-001181  
 PHONE: (217)-483-4168 FAX: (217)-483-4706

ILLINOIS DEPARTMENT OF TRANSPORTATION  
**PLAT OF HIGHWAYS**  
 FAP ROUTE 998  
 SECTION N/A  
 ST. CLAIR COUNTY  
 JOB NO. R-98-026-08  
 STATION 60+04.42 TO STATION 60+83.48 (70E55N)



ILLINOIS DEPARTMENT OF TRANSPORTATION  
 DIVISION OF HIGHWAYS/REGION 5/DISTRICT 8  
 1102 EASTPORT PLAZA DRIVE  
 COLLINGSVILLE, ILLINOIS 62234-6198

F.A.U. RTE.	SECTION	COUNTY	TOTAL SHEETS	SHEET NO.
9153	82-1LS-1	ST. CLAIR	37	29

COMPLETION DATE OF FIELD WORK PERFORMED  
 LAND SURVEY: \_\_\_\_\_ ROW STAKING: \_\_\_\_\_  
 CONTRACT NO. 76F40  
 FED. ROAD DIST. NO. - ILLINOIS FED. AID PROJECT

PARCEL NO.	OWNER	TOTAL HOLDING ACRES	ACQUISITION BY DEDICATION		EASEMENTS		PERMANENT TAX NUMBER	PROPERTY ACQUIRED BY
			GROSS ACRES	SQ. FT.	REMAINDER ACRES	PE = PERMANENT TE = TEMPORARY		
8826234PE	CSX TRANSPORTATION, INC. BK X PG XXX TITLE REPORT NO. SC-XXX.X	1				PE-1.8487 PE-80.529	BRIDGE CONSTRUCTION & MAINTENANCE	XX-XX.X-XXX-XXX
8826227DED	CSX TRANSPORTATION, INC. PB G PG49, BK 37 PG 609, BK L5 PG 319 TITLE REPORT NO. SC-5633.2	0.7255 (A) 1.1548 (B)	0.7255 (A) 1,1548 (B)	31,603 (A) 50,304 (B)	0.7255 (A) 1.1548 (B)			02-07.0-503-001 02-07.0-503-002

\* SEE TOTAL HOLDING AREA SOURCE TABLE ON SHEET 5

DATE = 7/29/2009  
 FILE NAME = 461111.DWG  
 PLOT SCALE = 1"=30'  
 USER NAME = JLW