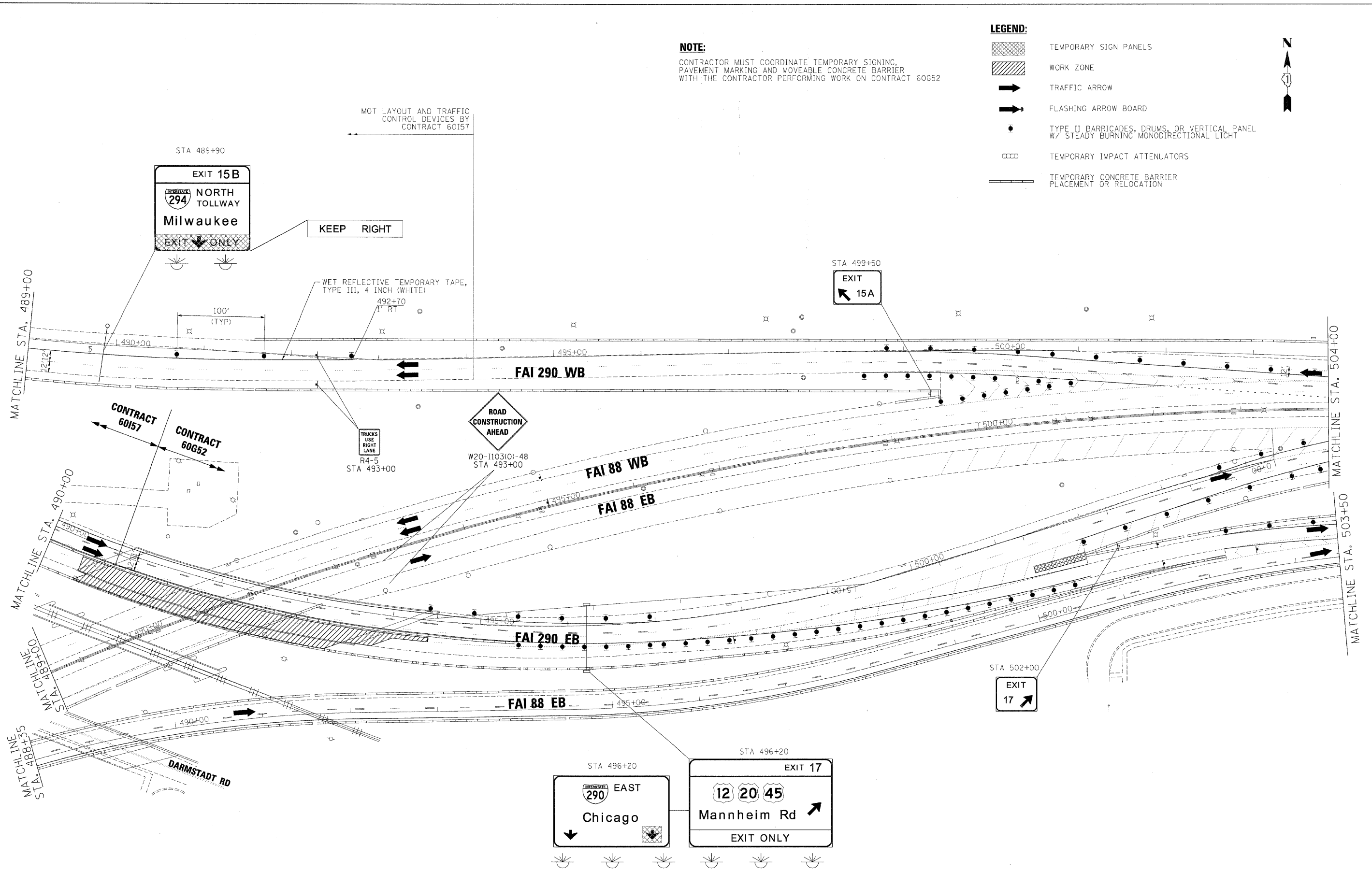


**NOTE:**  
 CONTRACTOR MUST COORDINATE TEMPORARY SIGNING,  
 PAVEMENT MARKING AND MOVEABLE CONCRETE BARRIER  
 WITH THE CONTRACTOR PERFORMING WORK ON CONTRACT 60G52

- LEGEND:**
- TEMPORARY SIGN PANELS
  - WORK ZONE
  - TRAFFIC ARROW
  - FLASHING ARROW BOARD
  - TYPE II BARRICADES, DRUMS, OR VERTICAL PANEL W/ STEADY BURNING MONODIRECTIONAL LIGHT
  - TEMPORARY IMPACT ATTENUATORS
  - TEMPORARY CONCRETE BARRIER PLACEMENT OR RELOCATION



FILE NAME =	DESIGNED - AJP	REVISED -
...prpIn.ABC_C4_298_mot.ST.1.C2-07.dgn	DRAWN - TMB	REVISED -
USLR NAME = tblank	CHECKED - JJT	REVISED -
PLOT DATE = 11/13/2009	DATE - 10/16/09	REVISED -

**benesch**

**STATE OF ILLINOIS  
 DEPARTMENT OF TRANSPORTATION**

**MAINTENANCE OF TRAFFIC  
 PLAN - STAGE 1**

SCALE: 1"=50' SHEET NO. 26 OF 69 SHEETS STA. TO STA.

F.A.I. RTE.	SECTION	COUNTY	TOTAL SHEETS	SHEET NO.
290	2009-099BR	COOK/DUPAGE	309	71
CONTRACT NO. 60I57				
FED. ROAD DIST. NO. ILLINOIS FED. AID PROJECT				