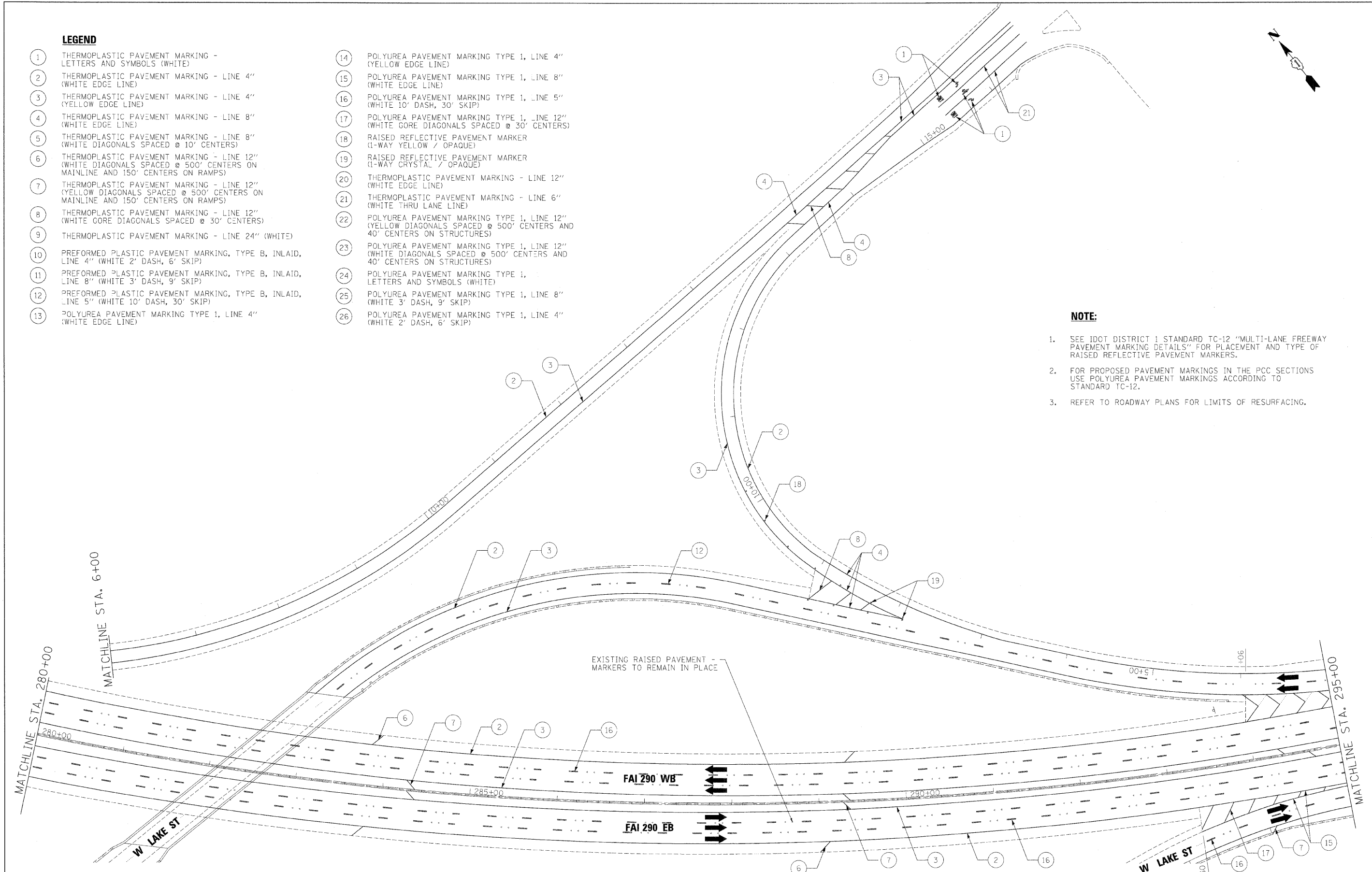
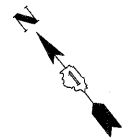


**LEGEND**

- |   |  |
|---|--|
| 1 THERMOPLASTIC PAVEMENT MARKING - LETTERS AND SYMBOLS (WHITE)  | 14 POLYUREA PAVEMENT MARKING TYPE 1, LINE 4" (YELLOW EDGE LINE)  |
| 2 THERMOPLASTIC PAVEMENT MARKING - LINE 4" (WHITE EDGE LINE)  | 15 POLYUREA PAVEMENT MARKING TYPE 1, LINE 8" (WHITE EDGE LINE)   |
| 3 THERMOPLASTIC PAVEMENT MARKING - LINE 4" (YELLOW EDGE LINE)   | 16 POLYUREA PAVEMENT MARKING TYPE 1, LINE 5" (WHITE 10' DASH, 30' SKIP)  |
| 4 THERMOPLASTIC PAVEMENT MARKING - LINE 8" (WHITE EDGE LINE)  | 17 POLYUREA PAVEMENT MARKING TYPE 1, LINE 12" (WHITE GORE DIAGONALS SPACED @ 30' CENTERS)                            |
| 5 THERMOPLASTIC PAVEMENT MARKING - LINE 8" (WHITE DIAGONALS SPACED @ 10' CENTERS)   | 18 RAISED REFLECTIVE PAVEMENT MARKER (1-WAY YELLOW / OPAQUE)   |
| 6 THERMOPLASTIC PAVEMENT MARKING - LINE 12" (WHITE DIAGONALS SPACED @ 500' CENTERS ON MAINLINE AND 150' CENTERS ON RAMP)  | 19 RAISED REFLECTIVE PAVEMENT MARKER (1-WAY CRYSTAL / OPAQUE)  |
| 7 THERMOPLASTIC PAVEMENT MARKING - LINE 12" (YELLOW DIAGONALS SPACED @ 500' CENTERS ON MAINLINE AND 150' CENTERS ON RAMP) | 20 THERMOPLASTIC PAVEMENT MARKING - LINE 12" (WHITE EDGE LINE)   |
| 8 THERMOPLASTIC PAVEMENT MARKING - LINE 12" (WHITE GORE DIAGONALS SPACED @ 30' CENTERS)                                   | 21 THERMOPLASTIC PAVEMENT MARKING - LINE 6" (WHITE THRU LANE LINE)   |
| 9 THERMOPLASTIC PAVEMENT MARKING - LINE 24" (WHITE)   | 22 POLYUREA PAVEMENT MARKING TYPE 1, LINE 12" (YELLOW DIAGONALS SPACED @ 500' CENTERS AND 40' CENTERS ON STRUCTURES) |
| 10 PREFORMED PLASTIC PAVEMENT MARKING, TYPE B, INLAID, LINE 4" (WHITE 2' DASH, 6' SKIP)                                   | 23 POLYUREA PAVEMENT MARKING TYPE 1, LINE 12" (WHITE DIAGONALS SPACED @ 500' CENTERS AND 40' CENTERS ON STRUCTURES)  |
| 11 PREFORMED PLASTIC PAVEMENT MARKING, TYPE B, INLAID, LINE 8" (WHITE 3' DASH, 9' SKIP)                                   | 24 POLYUREA PAVEMENT MARKING TYPE 1, LETTERS AND SYMBOLS (WHITE)   |
| 12 PREFORMED PLASTIC PAVEMENT MARKING, TYPE B, INLAID, LINE 5" (WHITE 10' DASH, 30' SKIP)                                 | 25 POLYUREA PAVEMENT MARKING TYPE 1, LINE 8" (WHITE 3' DASH, 9' SKIP)  |
| 13 POLYUREA PAVEMENT MARKING TYPE 1, LINE 4" (WHITE EDGE LINE)  | 26 POLYUREA PAVEMENT MARKING TYPE 1, LINE 4" (WHITE 2' DASH, 6' SKIP)  |



**NOTE:**

1. SEE IDOT DISTRICT 1 STANDARD TC-12 "MULTI-LANE FREEWAY PAVEMENT MARKING DETAILS" FOR PLACEMENT AND TYPE OF RAISED REFLECTIVE PAVEMENT MARKERS.
2. FOR PROPOSED PAVEMENT MARKINGS IN THE PCC SECTIONS USE POLYUREA PAVEMENT MARKINGS ACCORDING TO STANDARD TC-12.
3. REFER TO ROADWAY PLANS FOR LIMITS OF RESURFACING.

FILE NAME =	DESIGNED - AJP	REVISED -
...prpln_abc_c4_290_pvmtrkg_47.dgn	DRAWN - TMB	REVISED -
USER NAME = jmajewski	CHECKED - JMM	REVISED -
PLOT DATE = 12/16/2009	DATE - 10/16/09	REVISED -

**benesch**

**STATE OF ILLINOIS  
DEPARTMENT OF TRANSPORTATION**

**PAVEMENT MARKING PLANS  
I-290 STA 280+00 TO STA 295+00**

SCALE: 1"=50' SHEET NO. 2 OF 16 SHEETS STA. TO STA.

F.A.I. RTE.	SECTION	COUNTY	TOTAL SHEETS	SHEET NO.
290	2009-099BR	COOK/DUPAGE	309	116
FED. ROAD DIST. NO. ILLINOIS FED. AID PROJECT			CONTRACT NO. 60157	