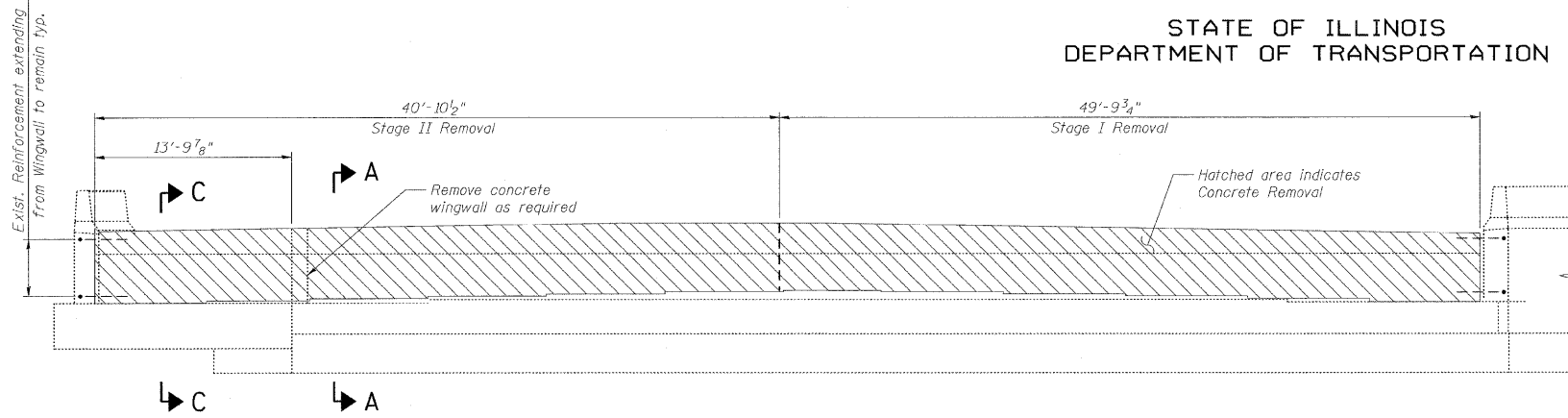
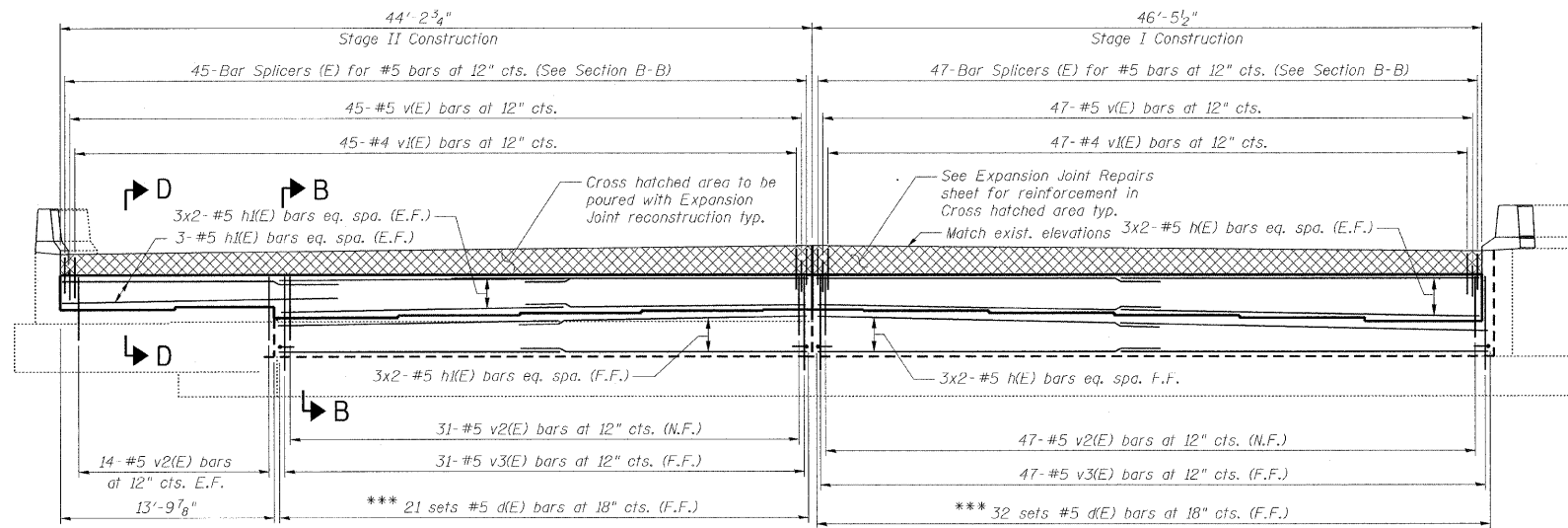


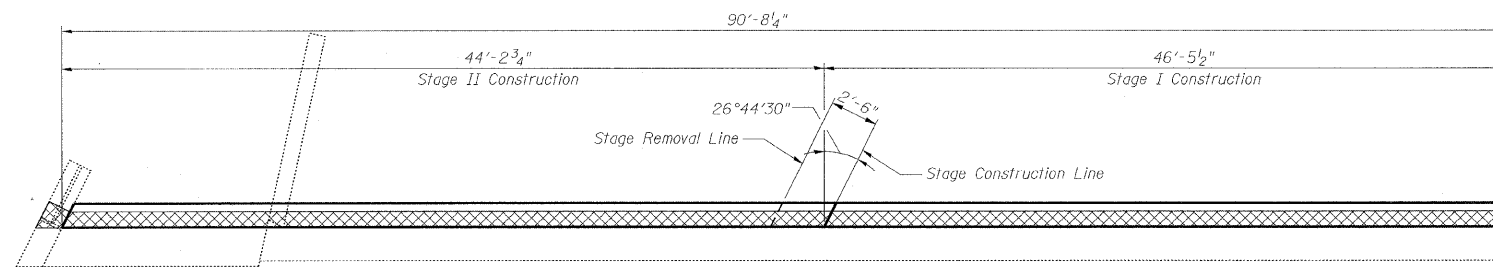
STATE OF ILLINOIS
DEPARTMENT OF TRANSPORTATION



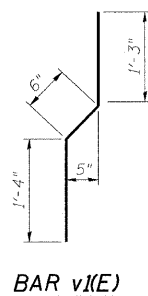
ELEVATION - BACKWALL REMOVAL
(Looking West)



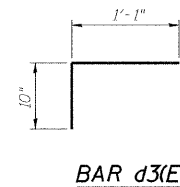
ELEVATION - PROPOSED BACKWALL
(Looking West)



PLAN

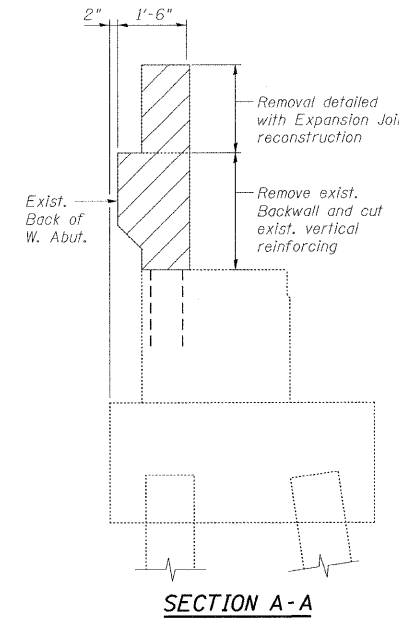


BAR v(E)

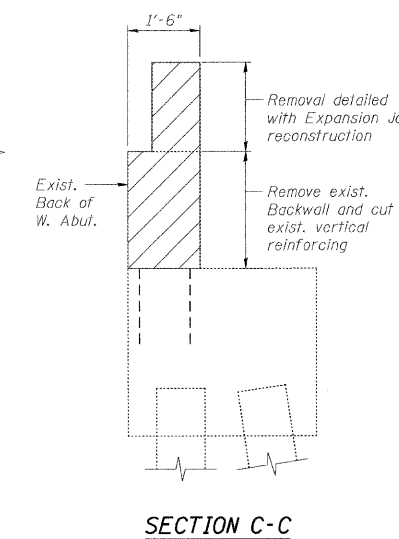


BAR d3(E)

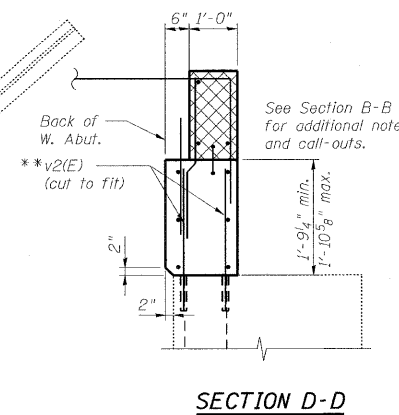
DESIGNED -	MFB
CHECKED -	KWS
DRAWN -	RMG
CHECKED -	KWS



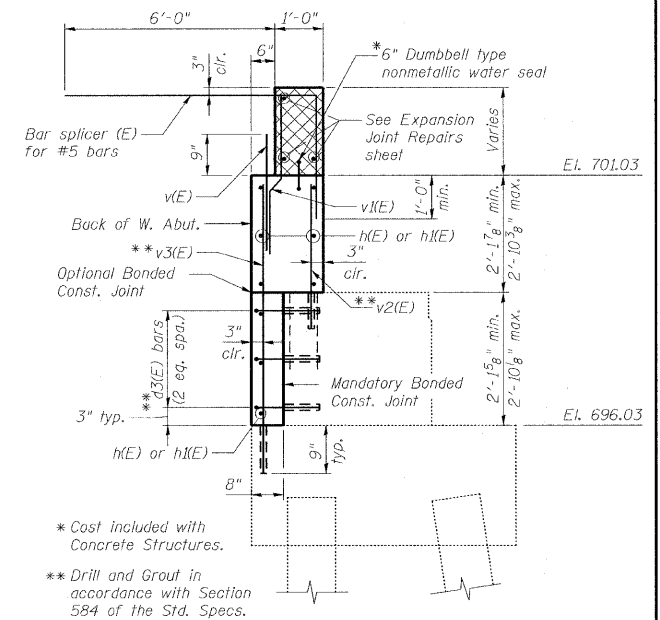
SECTION A-A



SECTION C-C



SECTION D-D



SECTION B-B

* Cost included with Concrete Structures.
** Drill and Grout in accordance with Section 584 of the Std. Specs.

BILL OF MATERIAL

BAR	NO.	SIZE	LENGTH	SHAPE
h(E)	18	#5	24'-6"	—
h(E)	24	#5	18'-3"	—
v(F)	92	#5	2'-11"	—
v(E)	92	#4	3'-1"	—
v2(E)	106	#5	3'-5"	—
v3(E)	78	#5	5'-5"	—
d3(E)	159	#5	1'-11"	—
ITEM	UNIT	TOTAL		
Concrete Removal	Cu. Yd.	11.0		
Concrete Structures	Cu. Yd.	16.8		
Reinforcement Bars, Epoxy Coated	Pound	2,530		

Notes:

- Cross hatched area to be poured with Expansion Joint reconstruction. Quantity of concrete included with Concrete Superstructure.
- Bars indicated thus 5x2-#5 etc. indicates 5 lines of bars with 2 lengths per line.
- E.F. denotes Each Face; F.F. denotes Far Face; N.F. denotes Near Face.
- Existing reinforcement bars extending into the concrete removal area that are designated to remain shall be cleaned, straightened and incorporated into the new construction. Any reinforcement bars that are damaged during concrete removal shall be replaced with an approved bar splicer or anchorage system. Cost included with Concrete Removal.
- For details of Bar Splicers, see Bar Splicer Assembly Details sheet.
- Cost of drilling and grouting is included with Reinforcement Bars, Epoxy Coated.
- Space d3(E) bars to miss v2(E) bars.

WEST ABUTMENT BACKWALL REPAIRS
STRUCTURE NO. 022-0006

SHEET NO. 13 25 SHEETS	F.A.I. RTE.	SECTION	COUNTY	TOTAL SHEETS	SHEET NO.
	290	2009-099 BR	COOK/DUPAGE	309	232
CONTRACT NO. 60157					
FED. ROAD DIST. NO. ILLINOIS FED. AID PROJECT					

benesch
alfred benesch & company
Engineers - Surveyors - Planners
205 North Michigan Avenue, Suite 2400
Chicago, Illinois 60601
312-665-0450 Job No. 10050