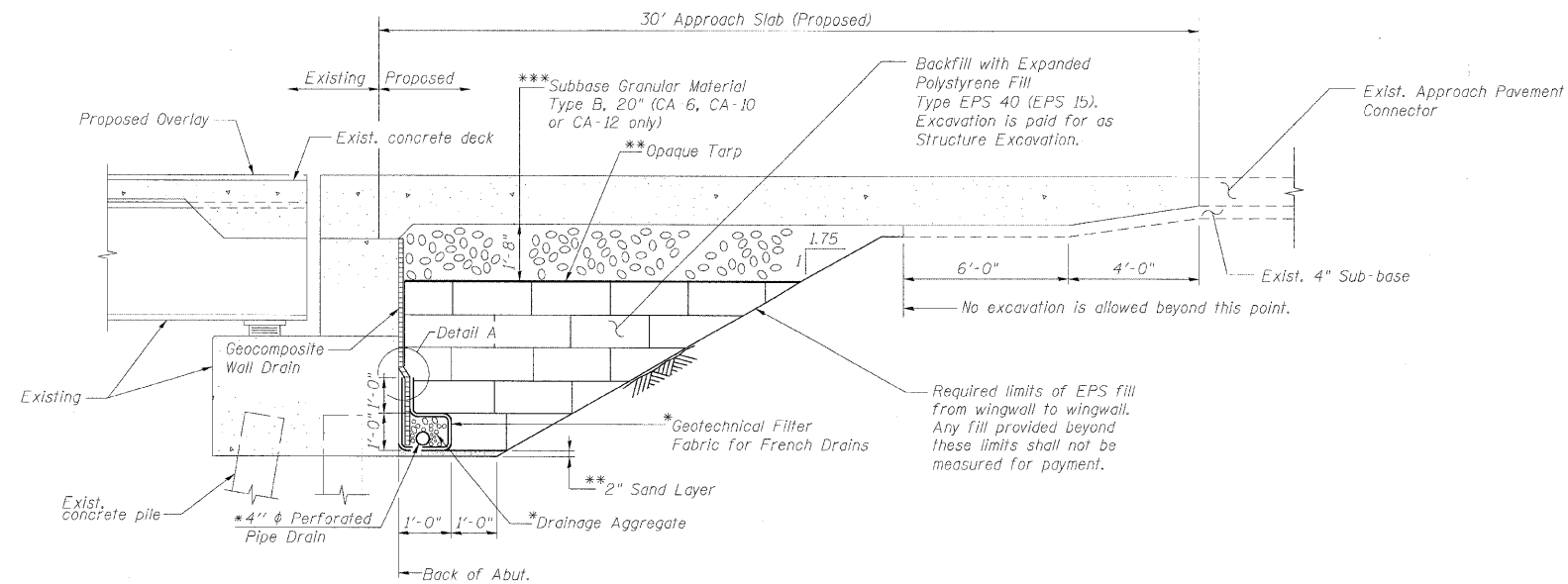


STATE OF ILLINOIS
DEPARTMENT OF TRANSPORTATION



ABUTMENT STABILIZATION DETAIL

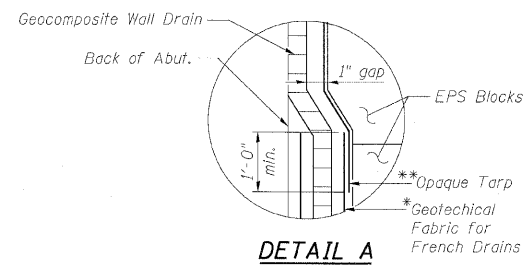
(Horiz. dim. @ Rt. L's)

* Included in the cost of Pipe Underdrains for Structures.

** Included in the cost of Expanded Polystyrene Fill.

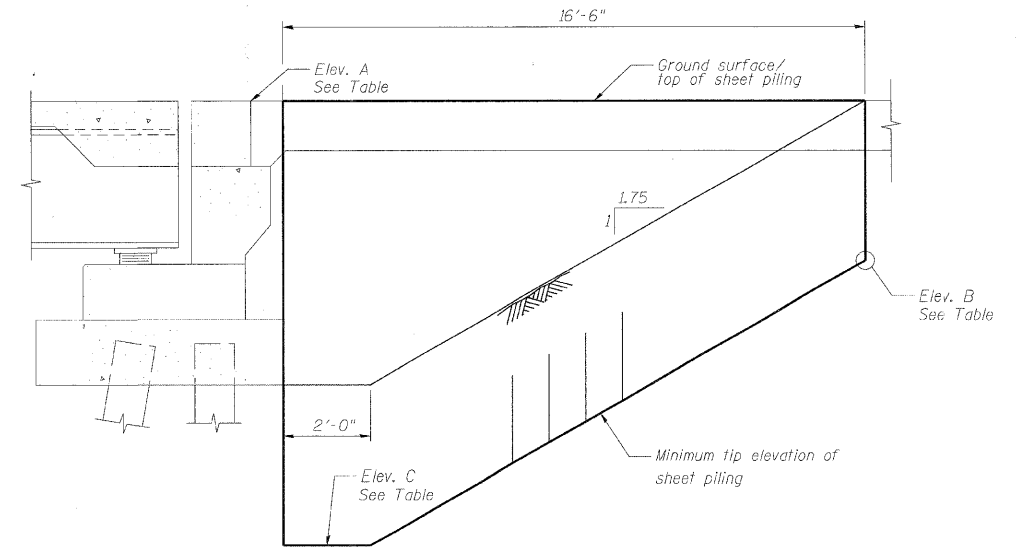
*** Included in the cost of Concrete Superstructure. See Approach Slab Details.

All drainage system components shall extend parallel to the abutment back wall until they intersect the wingwalls or 2'-0" from the end of the wingwalls when the wings are parallel to the abutment. The pipe shall extend under the wingwall, if necessary, until intersecting the side slopes. The pipes shall drain into concrete headwalls. (See Article 601.05 of the Standard Specifications and Highway Standard 601101).



BILL OF MATERIAL

Item	Unit	Total
Structure Excavation	Cu. Yd.	530
Temporary Sheet Piling	Sq. Ft.	312
Geocomposite Wall Drain	Sq. Yd.	94
Pipe Underdrains for Structures 4"	Foot	187
Expanded Polystyrene Fill	Cu. Yd.	336



TEMPORARY SHEET PILING

(Horiz. dim. @ Rt. L's)

Due to the shape of the abutment, the temporary sheet piling will not be able to be installed against the back the abutment for the full height of the cut. Extreme care shall be taken not to damage the footing during installation of the sheet piling. Soil at the inset portion of the abutment shall be retained. Cost Included with Temporary Sheet Piling.

SHEET PILING ELEVATION TABLE

Abutment	Elev. A	Elev. B	Elev. C	Min. Section Modulus Req'd. (in. ² /ft.)	Min. Embedment (ft.)
North	703.26	693.36	683.46	7.5	9.9
South	703.11	693.21	683.31	7.5	9.9

DESIGNED -	MFB
CHECKED -	KWS
DRAWN -	RMG
CHECKED -	KWS

benesch

alfred benesch & company
Engineers • Surveyors • Planners
205 North Michigan Avenue, Suite 2400
Chicago, Illinois 60601
312-955-0450 Job No. 10050

SHEET NO. 16 25 SHEETS	F.A.I. RTE.	SECTION	COUNTY	TOTAL SHEETS	SHEET NO.
	290	2009-099 BR	COOK/DUPAGE	309	260
FED. ROAD DIST. NO.			ILLINOIS FED. AID PROJECT		
				CONTRACT NO. 60157	

**ABUTMENT STABILIZATION DETAILS
STRUCTURE NO. 022-0005**