

STATE OF ILLINOIS
DEPARTMENT OF TRANSPORTATION

QUANTITIES FOR 100-FOOT APPROACH SLAB

Skew Angle	Bottom Reinforcement		Top Reinforcement				Total Weight bars-lbs.
	#5 B bars	A	#4 A ₃ bars	#4 A ₄ bars			
	No.	Length	No.	Length	No.	Length	

16-FOOT WIDTH PAVEMENT

Skew Angle	#5 B bars	A	#4 A ₃ bars	#4 A ₄ bars	Total Weight bars-lbs.
0°	40	15'-6"	B1	34'-3"	5980
5°	40	15'-7"	B1	34'-0"	6010
10°	40	15'-9"	B1	33'-10"	6020
15°	40	15'-1"	B1	33'-7"	6030
20°	40	16'-6"	B1	33'-5"	6050
25°	40	17'-1"	B1	33'-2"	6070
30°	40	17'-11"	B1	32'-11"	6110
35°	40	18'-11"	B1	32'-7"	6150
40°	40	20'-3"	B1	32'-3"	6200
45°	40	21'-11"	B1	31'-11"	6280
50°	40	24'-1"	B1	31'-5"	6370
55°	40	27'-0"	B1	30'-11"	6450
60°	40	31'-0"	B1	30'-2"	6660

24-#9 A bars 27'-0"
11-#9 A₁ bars 20'-3"
24-#5 A₂ bars 10'-0"
26-#4 B₁ bars 15'-6"

Bridge Approach Pavement
178 Sq. Yds.

Skew Angle	Bottom Reinforcement		Top Reinforcement				Total Weight bars-lbs.
	#5 B bars	A	#4 A ₃ bars	#4 A ₄ bars			
	No.	Length	No.	Length	No.	Length	

24-FOOT WIDTH PAVEMENT

Skew Angle	#5 B bars	A	#4 A ₃ bars	#4 A ₄ bars	Total Weight bars-lbs.
0°	40	23'-5"	126	34'-3"	8840
5°	40	23'-7"	126	33'-10"	8880
10°	40	23'-10"	126	33'-6"	8890
15°	40	24'-4"	126	33'-2"	8910
20°	40	25'-0"	126	32'-9"	8940
25°	40	25'-11"	126	32'-4"	8980
30°	40	27'-2"	126	31'-11"	9030
35°	40	28'-8"	126	31'-5"	9090
40°	40	30'-8"	126	30'-10"	9170
45°	40	33'-3"	126	30'-3"	9290
50°	80	19'-1"	126	29'-5"	9490
55°	80	21'-4"	126	28'-6"	9680
60°	80	24'-4"	126	27'-3"	9940

32-#9 A bars 27'-0"
19-#9 A₁ bars 20'-3"
32-#5 A₂ bars 10'-0"
32-#4 B₁ bars 11'-6"

Bridge Approach Pavement
267 Sq. Yds.

Skew Angle	Bottom Reinforcement		Top Reinforcement				Total Weight bars-lbs.
	#5 B bars	A	#4 A ₃ bars	#4 A ₄ bars			
	No.	Length	No.	Length	No.	Length	

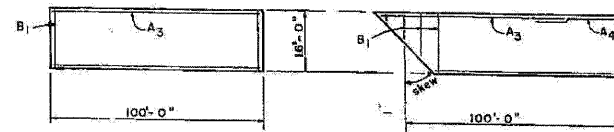
36-FOOT WIDTH PAVEMENT

Skew Angle	#5 B bars	A	#4 A ₃ bars	#4 A ₄ bars	Total Weight bars-lbs.
0°	40	35'-6"	189	34'-3"	13040
5°	40	35'-8"	189	33'-8"	13090
10°	40	36'-0"	189	33'-2"	13110
15°	80	19'-4"	189	32'-8"	13230
20°	80	19'-10"	189	32'-0"	13260
25°	80	20'-7"	189	31'-5"	13330
30°	80	21'-6"	189	30'-9"	13410
35°	80	22'-8"	189	30'-0"	13510
40°	80	24'-2"	189	29'-2"	13630
45°	80	26'-2"	189	28'-3"	13840
50°	80	28'-8"	189	27'-1"	14050
55°	80	32'-0"	189	25'-8"	14330
60°	80	36'-7"	189	23'-10"	14710

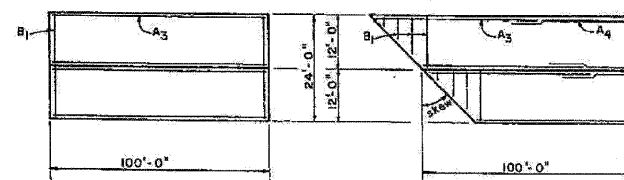
44-#9 A bars 27'-0"
31-#9 A₁ bars 20'-3"
44-#5 A₂ bars 10'-0"
78-#4 B₁ bars 11'-6"

Bridge Approach Pavement
400 Sq. Yds.

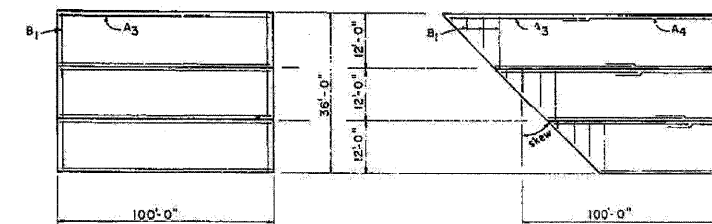
TOP OF SLAB BAR ARRANGEMENT



TOP OF SLAB BAR ARRANGEMENT



TOP OF SLAB BAR ARRANGEMENT



Illinois Department of Transportation
PASSED: May 20, 1981
APPROVED: May 20, 1981
Engineer of Design

BRIDGE APPROACH PAVEMENT
(Sheet 2 of 2)
STANDARD 2353-5
Full Size DWG. Sr.

FOR INFORMATION ONLY

benesch
alfred benesch & company
Engineers • Surveyors • Planners
205 North Michigan Avenue, Suite 2400
Chicago, Illinois 60601
312-665-0450 Job No. 10050

SHEET NO. 20 25 SHEETS	F.A.I. RTE.	SECTION	COUNTY	TOTAL SHEETS	SHEET NO.
	290	2009-099 BR	COOK/DUPAGE	309	264
FED. ROAD DIST. NO.			ILLINOIS FED. AID PROJECT		
			CONTRACT NO. 60157		

EXISTING PLAN INFORMATION 3 OF 10
STRUCTURE NO. 022-0005

x:\100005\100550\engineering\documents\contract-1\SN-022-0006-0005-Yor-k-Rd\0005-60051-020-Exstplan_03.dgn
18:44:10
11/12/2009