






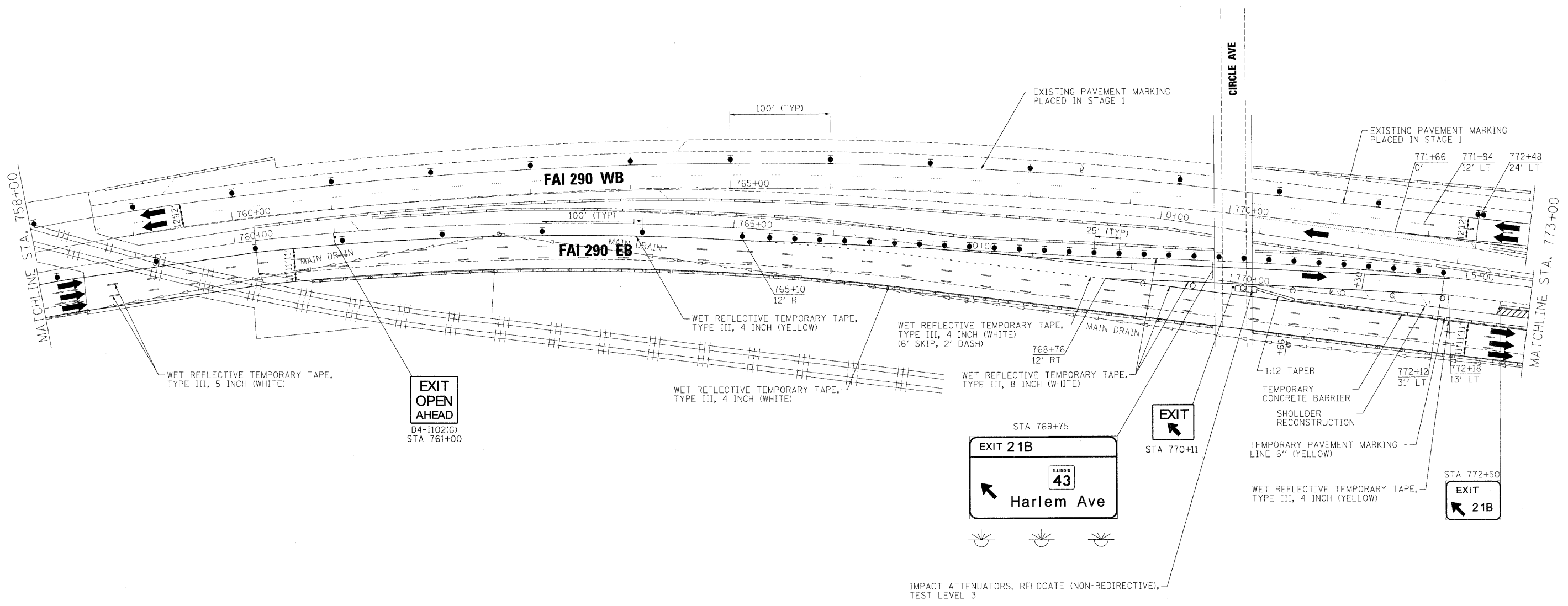
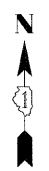


- LEGEND:**
-  TEMPORARY SIGN PANELS
 -  WORK ZONE
 -  TRAFFIC ARROW
 -  FLASHING ARROW BOARD
 -  TYPE II BARRICADES, DRUMS, OR VERTICAL PANEL W/ STEADY BURNING MONODIRECTIONAL LIGHT
 -  TEMPORARY IMPACT ATTENUATORS
 -  TEMPORARY CONCRETE BARRIER PLACEMENT OR RELOCATION



FILE NAME -	DESIGNED - AJP	REVISED -
...Norpin_ABC.C2.298_mot.ST.2.25.dgn	DRAWN - TMB	REVISED -
USER NAME = jmojewski	CHECKED - JJT	REVISED -
PLOT DATE = 1/25/2010	DATE - 1/25/10	REVISED -

benesch

**STATE OF ILLINOIS
DEPARTMENT OF TRANSPORTATION**

**MAINTENANCE OF TRAFFIC
PLAN - STAGE 2**

SCALE: 1"=50' SHEET NO. 36 OF 50 SHEETS STA. TO STA.

F.A.I. RTE.	SECTION	COUNTY	TOTAL SHEETS	SHEET NO.
290	(3131, ETC., 3435)RS-6	COOK	215	90
FED. ROAD DIST. NO.		ILLINOIS FED. AID PROJECT		
		CONTRACT NO. 60K10		