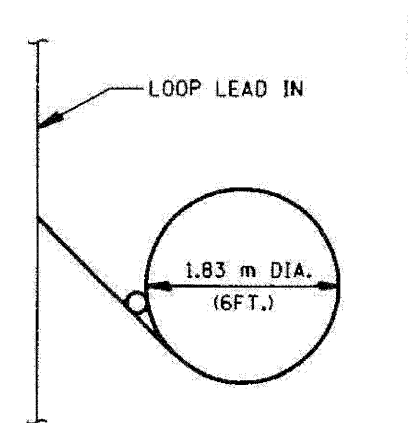
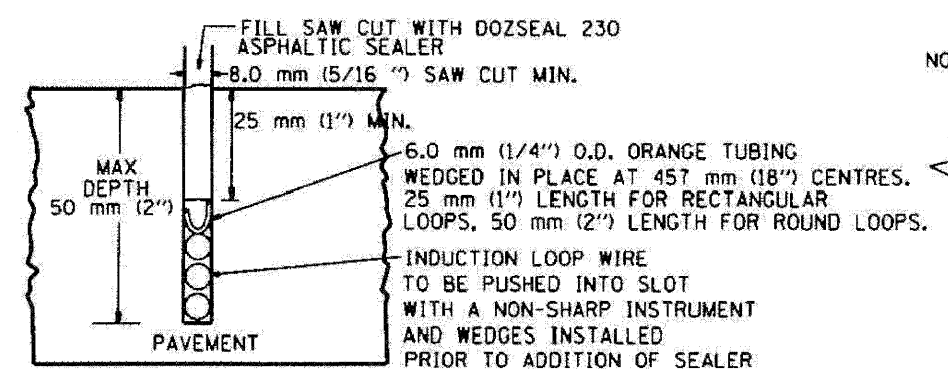
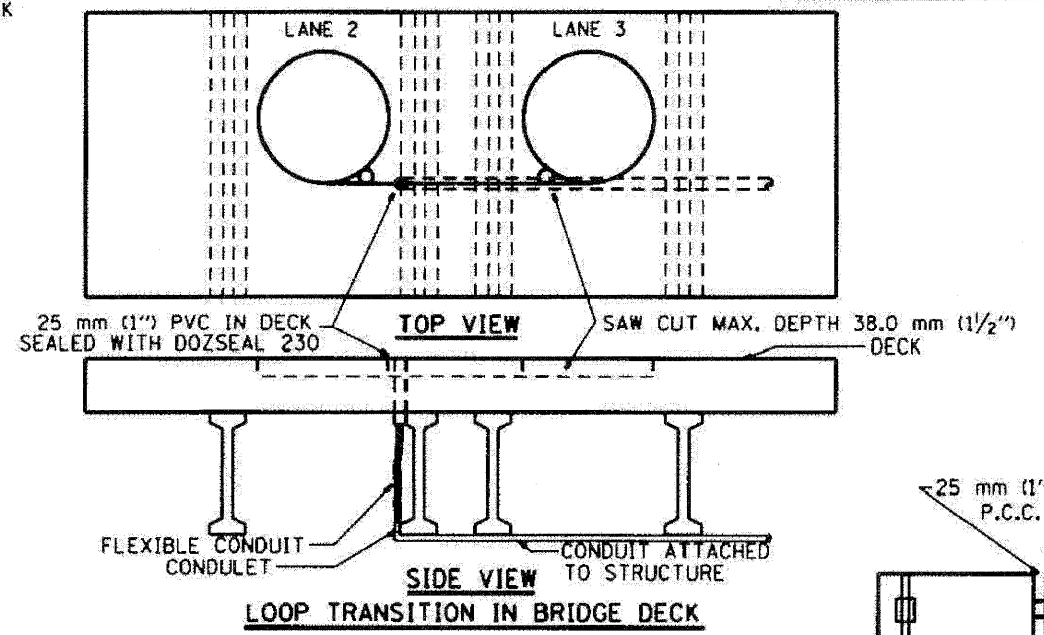
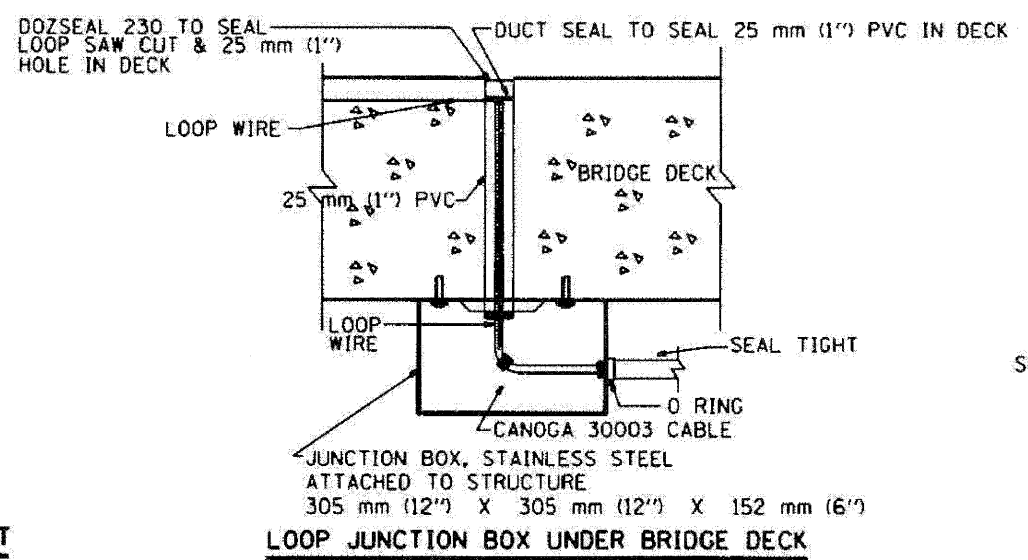


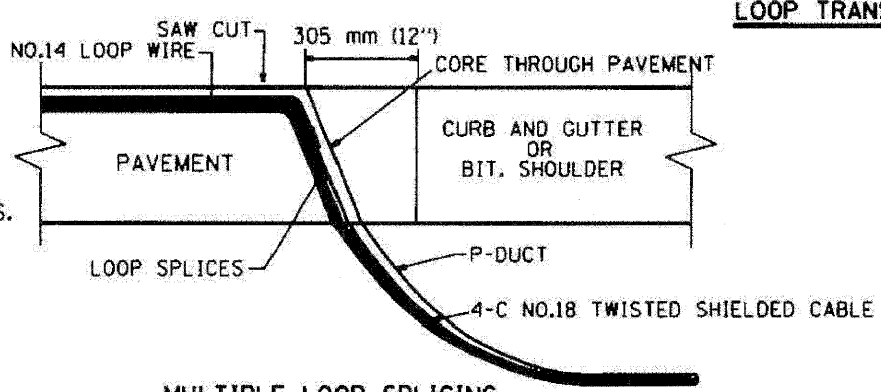
F.A. RTE.	SECTION	COUNTY	TOTAL SHEETS	SHEET NO.
290	(3131, ETC., 3435RS-6	COOK	215	194
FED. ROAD DIST. NO.			ILLINOIS FED. AID PROJECT	



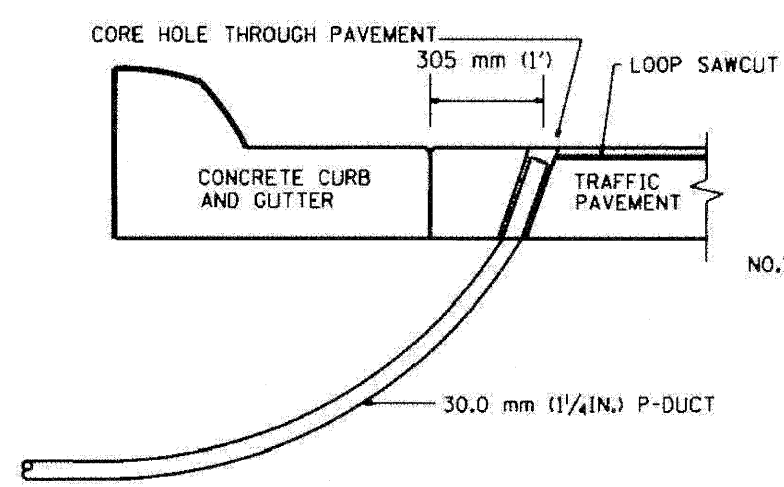
TYPICAL LOOP SAWCUT LAYOUT



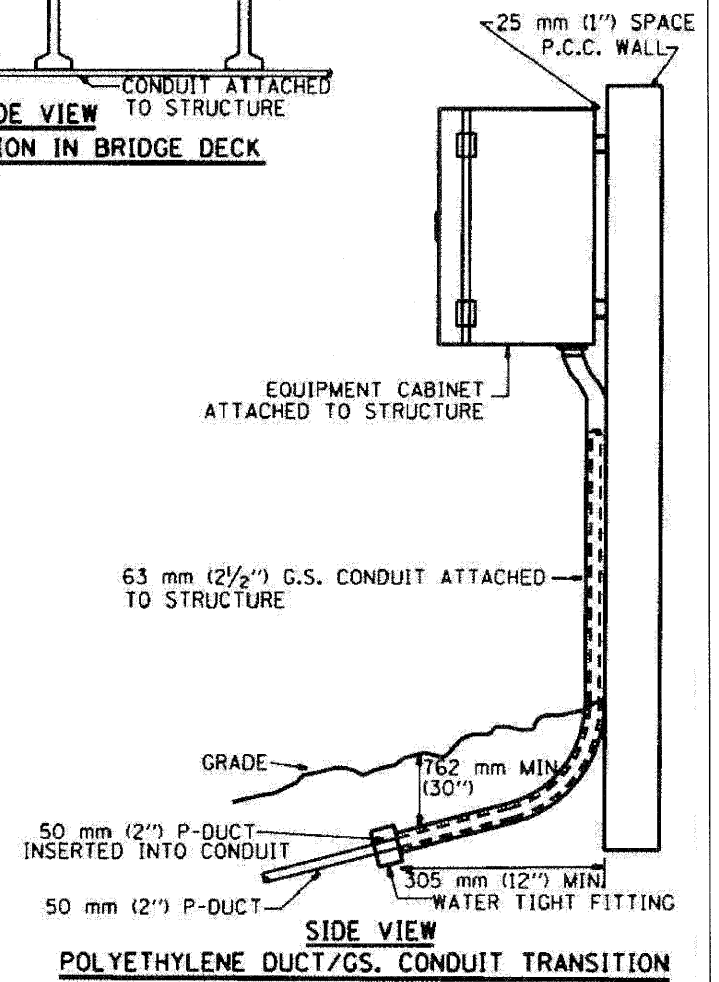
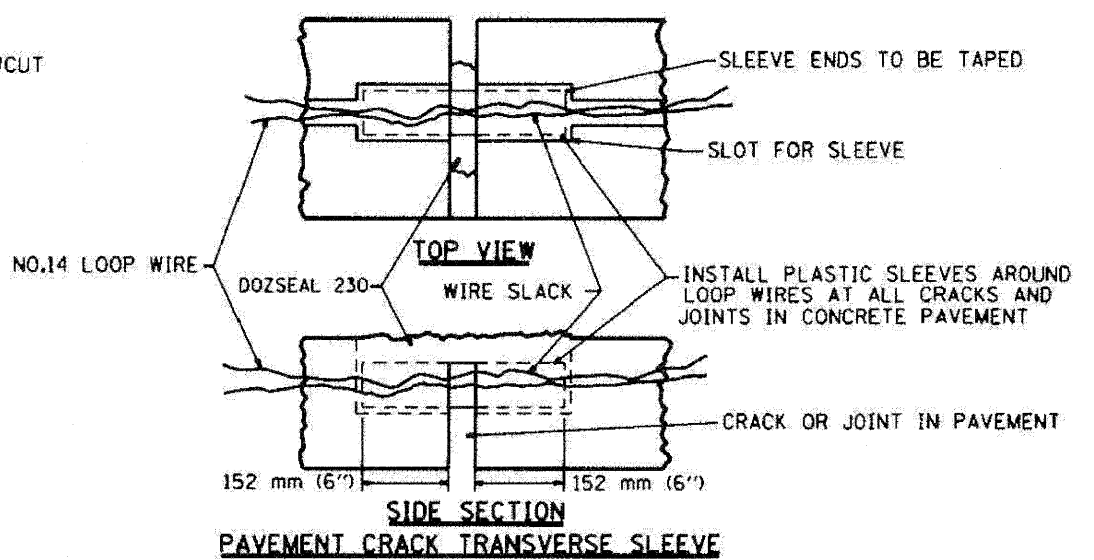
LOOP CROSS SECTION IN PAVEMENT



MULTIPLE LOOP SPLICING



SIDE SECTION LOOP LEAD-IN TRANSITION DETAIL



REVISIONS		ILLINOIS DEPARTMENT OF TRANSPORTATION TRAFFIC SYSTEMS CENTER	
NO.	DATE	NAME	DATE
1.	5/78	R.L.	
2.	5/78	R.L.	
3.	11/78	T.E.	
4.	08/78	R.L.	
5.	10/78	T.E.	

SCALE: VERT. NONE

DATE: 6-22-84

DRAWN BY: G.M.

CHECKED BY: R.L.

TRAFFIC SYSTEMS CENTER (TY-1TSC-418*4)

FILE NAME =	DESIGNED - GHT	REVISED -
\\ppp\in_abc\c2_ts_det_12.dgn	DRAWN - TMB	REVISED -
USER NAME = tblank	CHECKED - MPM	REVISED -
PLOT DATE = 1/25/2010	DATE - 1/25/10	REVISED -

benesch

STATE OF ILLINOIS DEPARTMENT OF TRANSPORTATION

TRAFFIC SYSTEMS CENTER DETAIL SHEETS		
SCALE: N.T.S.	SHEET NO. 12 OF 17 SHEETS	STA. TO STA.

F.A.I. RTE.	SECTION	COUNTY	TOTAL SHEETS	SHEET NO.
290	(3131, ETC., 3435RS-6	COOK	215	194
FED. ROAD DIST. NO.			ILLINOIS FED. AID PROJECT	