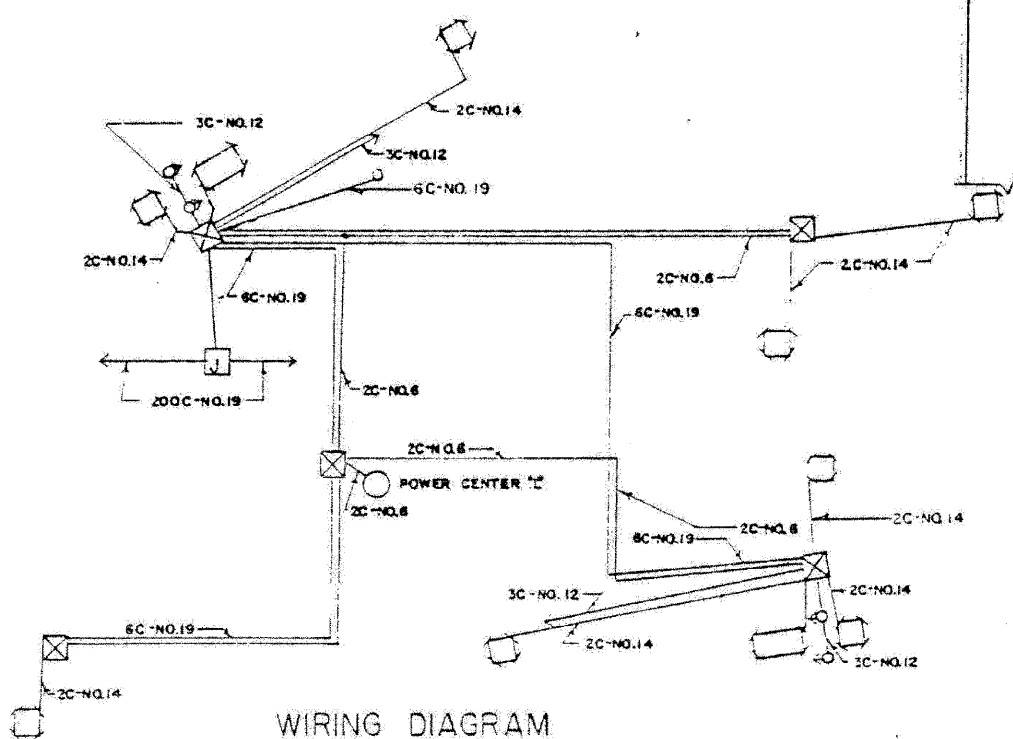
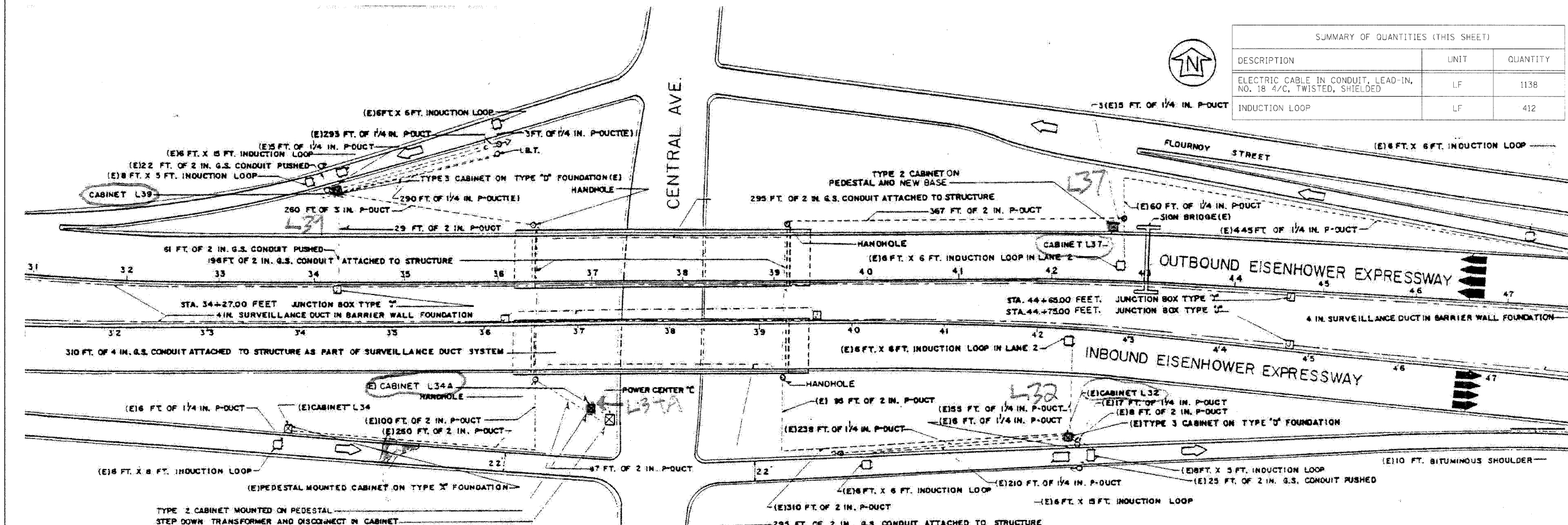


SUMMARY OF QUANTITIES (THIS SHEET)		
DESCRIPTION	UNIT	QUANTITY
ELECTRIC CABLE IN CONDUIT, LEAD-IN, NO. 18 4/C, TWISTED, SHIELDED	LF	1138
INDUCTION LOOP	LF	412



X0-30	X1-10	X0-30	X0-37
540	540	540	
780	780	780	
1020	1020	1020	
1260	1260	1260	
1500	1500	1500	
1740	1740	1740	
	1980	1980	1980
			2340

ESTIMATE of QUANTITY		
1	EACH	IND. LOOP DET. SEN. UNIT
1	EACH	DIG. LOOP DET. SEN. UNIT 2
131	LN. FT.	INDUCTION LOOP
25	LN. FT.	POLYETHYLENE DUCT
747	LN. FT.	GALV. CON AT ST 2
210	LN. FT.	GALV. CON AT ST 1
403	LN. FT.	POLY DUCT 1/4"
442	LN. FT.	POLY DUCT 2"
1147	LN. FT.	EL. CBL. 05 20
279	LN. FT.	EL. CBL. 012 30
1972	LN. FT.	EL. CBL. 019 30
1400	LN. FT.	EL. CBL. 019 200C
294	LN. FT.	EL. CBL. 014 20 SHIELD
1	EACH	SERV. INSTALL TY. C.
1	EACH	HANDHOLE
218	LN. FT.	TRENCH & BACKFILL
1	EACH	CAB. HANG EQ ATT STR. ESP 2
218	LN. FT.	THPL. RVT MK LINE 8
802	LN. FT.	THPL. RVT MK LINE 12
1	EACH	THPL. RVT MK LINE 18
1	EACH	STEP DOWN TRANS.

SYMBOL	LEGEND
[Square with diagonal line]	INDUCTION LOOP
[Dashed line]	POLYETHYLENE DUCT
[Solid line]	G.S. CONDUIT
[Square with 'X']	T.S.C. CABINET
[Circle with dot]	HANDHOLE
[Circle with 'H']	HEAVY DUTY HANDHOLE
[Circle with 'P']	PULL POINT
[Circle with 'S']	SERVICE INSTALLATION
[Circle with 'L']	LIGHT STANDARD
[Circle with 'R']	RAMP METERING SIGNAL
[Circle with 'G']	GUARD RAIL
(E)	EXISTING FACILITIES
(R)	REMOVE EXISTING FACILITIES
(A)	ABANDON FACILITIES

NOTES

1. ALL LOOP LEAD-IN CABLE SHALL BE 2C-NQ.14 SHIELDED
2. ALL REPLACED AC. CABLE SHALL BE 2C-NQ.6
3. ALL REPLACED TELEPHONE INTERCONNECT CABLE SHALL BE 6C-NQ.19

INBOUND

NOTE:
 IDGT RECORD PLANS PROVIDED FOR INFORMATIONAL PURPOSES ONLY. THE CONTRACTOR IS RESPONSIBLE FOR VERIFYING THE LOCATION AND EXTENT OF WORK ASSOCIATED WITH REPLACEMENT OF INDUCTION LOOPS, LEAD-IN CABLE AND RELATED WORK.