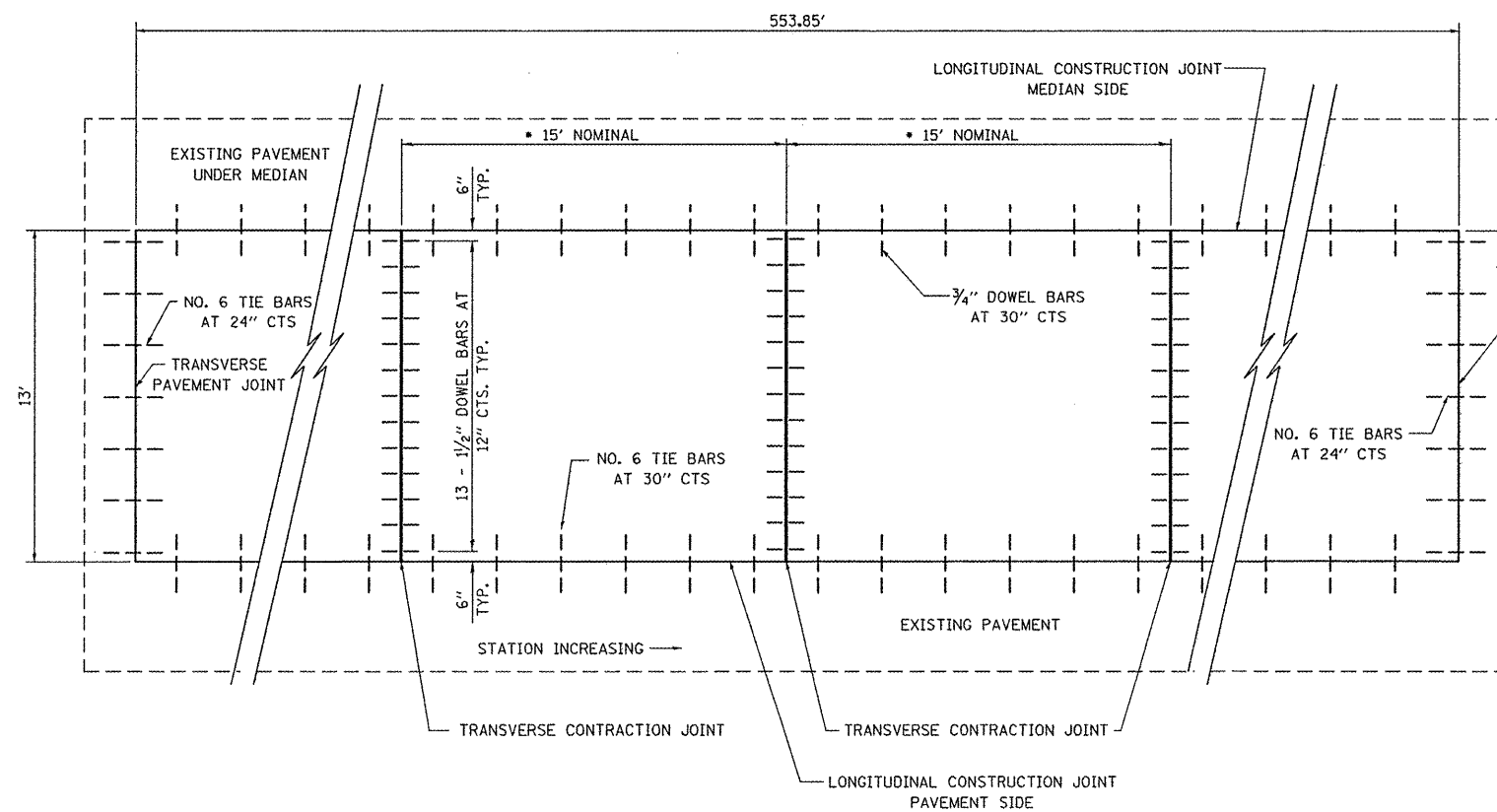


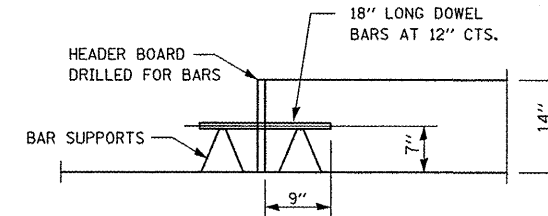
TYPICAL SECTION
STA. 132+83.92 TO STA. 138+37.77

- LEGEND**
- ① EXISTING PCC PAVEMENT 10" ±
 - ② EXISTING CRC PAVEMENT 11.25"
 - ③ EXISTING HMA SURFACE 6"
 - ④ EXISTING SUB-BASE 4" ±
 - ⑤ EXISTING CONCRETE MEDIAN DOWELED
 - ⑥ EXISTING HMA SHOULDER 8" ±
 - ⑦ PROPOSED PCC JOINTED PAVEMENT 14"
 - ⑧ PROPOSED SUB-BASE GRANULAR MATERIAL, TYPE A, 6"
 - ⑨ PROPOSED LIME MODIFIED SOIL 12"

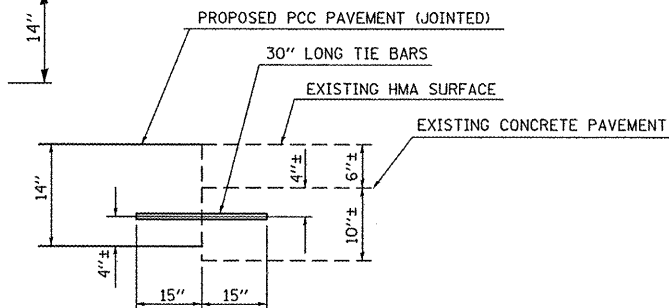
• THE 15' DIMENSION SHALL BE ADJUSTED TO 12' MIN. TO 18' MAX. WHEN PLACED ADJACENT TO EXISTING PCC PAVEMENT STRUCTURE SO THAT THE JOINTS ARE IN PROLONGATION



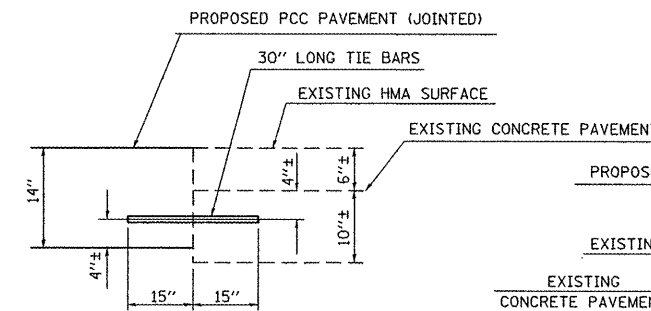
PAVEMENT DETAILS PLAN



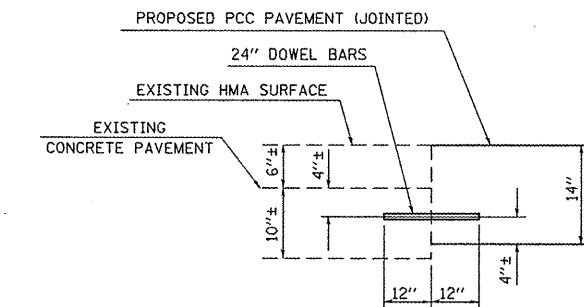
TRANSVERSE CONSTRUCTION JOINT



LONGITUDINAL CONSTRUCTION JOINT PAVEMENT SIDE



TRANSVERSE PAVEMENT JOINT



LONGITUDINAL CONSTRUCTION JOINT MEDIAN SIDE

FILE NAME =	USER NAME = #USER#	DESIGNED - ACM	REVISED -
*FILE#		DRAWN - ACM	REVISED -
	PLOT SCALE = #SCALE#	CHECKED -	REVISED -
	PLOT DATE = #DATE#	DATE -	REVISED -

**STATE OF ILLINOIS
DEPARTMENT OF TRANSPORTATION**

TYPICAL SECTION PAVEMENT DETAILS		F.A.P. RTE.	SECTION	COUNTY	TOTAL SHEETS	SHEET NO.
SCALE: NONE	SHEET NO. 1 OF 1 SHEETS	103	29-1-I	ST. CLAIR	8	3
STA. 132+83.92 TO STA. 138+37.77		CONTRACT NO. 76E63				
ILLINOIS FED. AID PROJECT						