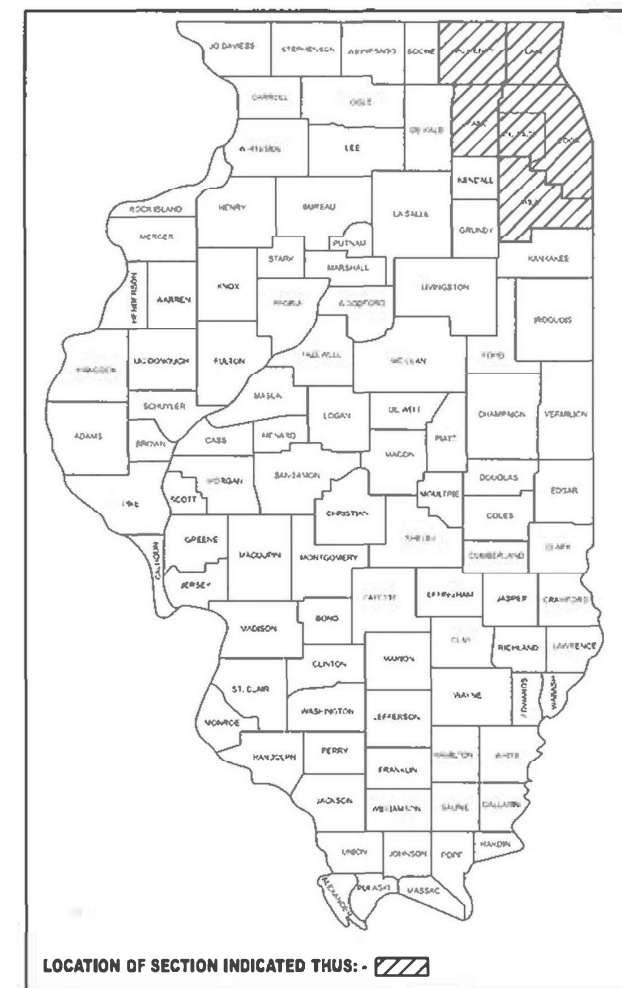


STATE OF ILLINOIS  
DEPARTMENT OF TRANSPORTATION

F.A. RTE.	SECTION	COUNTY	TOTAL SHEETS	SHEET NO.
**	2025-1078-FNC	ILLINOIS	22	1
CONTRACT NO. 62Y37				

\*\*VARIOUS      \*COOK, DUPAGE, KANE, LAKE, MCHENRY, & WILL

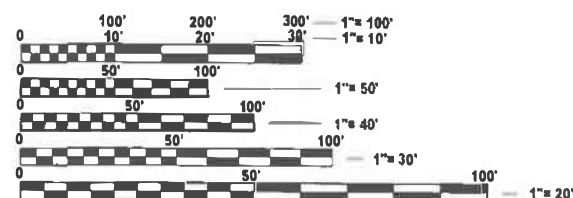
D-91-156-25



FOR INDEX OF SHEETS, SEE SHEET NO. 2

PROPOSED  
HIGHWAY PLANS

ROUTE: VARIOUS EXPRESSWAYS AND ARTERIAL  
HIGHWAYS - DISTRICT ONE  
SECTION 2025-1078-FNC  
FENCE REPAIR  
COUNTY: VARIOUS  
C-91-233-25



FULL SIZE PLANS HAVE BEEN PREPARED USING STANDARD  
ENGINEERING SCALES. REDUCED SIZED PLANS WILL NOT  
CONFORM TO STANDARD SCALES. IN MAKING MEASUREMENTS  
ON REDUCED PLANS, THE ABOVE SCALES MAY BE USED.

J.U.L.I.E.  
JOINT UTILITY LOCATION INFORMATION FOR EXCAVATION  
1-800-892-0123  
OR 811

PROJECT ENGINEER: OSCAR OLIVEROS (847) 705-4548  
PROJECT MANAGER: JACEK EJMONT (847) 705-4641

CONTRACT NO. 62Y37

SEE LOCATION MAPS  
SHEETS 4 THRU 12

STATE OF ILLINOIS  
DEPARTMENT OF TRANSPORTATION

SUBMITTED Dec 15 20 25 Jose Rios IR  
REGIONAL ENGINEER

January 23 20 26  
Scott A. Etkin  
ENGINEER OF DESIGN AND ENVIRONMENT

January 23 20 26  
Harry 5  
DIRECTOR OF HIGHWAYS PROJECT IMPLEMENTATION

PRINTED BY THE AUTHORITY  
OF THE STATE OF ILLINOIS

MODEL: GenNotesSh01 [Sheet]  
FILE NAME: c:\pwwork\pwtoluyuyang.deng@illinois.gov\d117287\D115625-sh-gennote.dgn

INDEX OF SHEETS

- 1

COVER SHEET
- 2

INDEX OF SHEETS, STATE STANDARDS, AND GENERAL NOTES
- 3

SUMMARY OF QUANTITIES
- 4

FENCE REPAIR LOCATION MAP  
COOK COUNTY (NORTH OF ILL 38)
- 5

FENCE REPAIR LOCATION MAP  
COOK COUNTY (SOUTH OF ILL 38)
- 6

FENCE REPAIR LOCATION MAP  
DUPAGE COUNTY (NORTH OF ILL 38)
- 7

FENCE REPAIR LOCATION MAP  
DUPAGE COUNTY (SOUTH OF ILL 38)
- 8

FENCE REPAIR LOCATION MAP  
KANE COUNTY (NORTH OF ILL 38)
- 9

FENCE REPAIR LOCATION MAP  
KANE COUNTY (SOUTH OF ILL 38)
- 10

FENCE REPAIR LOCATION MAP  
WILL COUNTY
- 11

FENCE REPAIR LOCATION MAP  
LAKE COUNTY
- 12

FENCE REPAIR LOCATION MAP  
MCHENRY COUNTY
- 13

DETAILS OF PEDESTRIAN BARRIER TYPE III (STD. 10-SS-514R)
- 14

CHAIN LINK FENCE (STD 10-SS-506B)
- 15

CHAIN LINK FENCE POST SLEEVE REPAIR DETAIL
- 16

PROPOSED PEDESTRIAN BARRIER AND CHAIN LINK FENCE WITH TENSION  
WIRE AND FENCE RAIL REMOVAL
- 17

SPECIAL FENCE DETAILS
- 18

ENTRANCE AND EXIT RAMP CLOSURE DETAILS (TC-08)
- 19

TRAFFIC CONTROL AND PROTECTION FOR SIDE ROADS, INTERSECTIONS  
AND DRIVEWAYS (TC-10)
- 20

TRAFFIC CONTROL AND PROTECTION AT TURN BAYS (TO REMAIN OPEN  
TO TRAFFIC) (TC-14)
- 21

TRAFFIC CONTROL DETAILS FOR FREEWAY SHOULDER CLOSURE AND PARTIAL RAMP  
CLOSURES (TC-17)
- 22

FREEWAY / EXPRESSWAY SIGNING FOR FLAGGING OPERATIONS AT WORK  
ZONE OPENINGS ON FREEWAYS / EXPRESSWAYS (TC-18)

GENERAL NOTES

1. BEFORE STARTING ANY EXCAVATION, THE CONTRACTOR SHALL CALL "J.U.L.I.E" AT (800) 892-0123 OR 811 FOR FIELD LOCATIONS OF BURIED ELECTRIC, TELEPHONE, AND GAS UTILITIES. 48-HOUR NOTIFICATION IS REQUIRED.
- \*2. THE CONTRACTOR SHALL CONTACT THE DISTRICT ONE TRAFFIC CONTROL SUPERVISOR AT (847) 705-4155 FOR EXPRESSWAYS AND KALPANA.KANNAN-HOSADURGA@ILLINOIS.GOV FOR ARTERIALS. A MINIMUM OF (72) HOURS IN ADVANCE OF BEGINNING WORK.
3. THE CONTRACTOR SHALL SUBMIT ALL DAILY LANE, RAMP, AND SHOULDER CLOSURES VIA WWW.IDOTLCS.COM AT LEAST (24) HOURS IN ADVANCE OF ALL DAILY LANE, AND RAMP AND SHOULDER CLOSURES. THE CONTRACTOR SHALL REQUEST AND GAIN THE APPROVAL FROM THE ILLINOIS DEPARTMENT OF TRANSPORTATION'S EXPRESSWAY TRAFFIC OPERATIONS ENGINEER AT (847) 705-4151 OR (847) 705-4155.

STATE STANDARDS

DESCRIPTION

- 664001 – 02

CHAIN LINK FENCE
- 665001 – 02

WOVEN WIRE FENCE
- \* 701001 – 02

OFF-ROAD OPERATIONS, 2L, 2W, MORE THAN 15' AWAY
- \* 701006 – 05

OFF-ROAD OPERATIONS, 2L, 2W, 15' TO 24' FROM PAVEMENT EDGE
- \* 701101 – 05

OFF-ROAD OPERATIONS, MULTILANE, 15' (4.5 M) TO 24" (600 MM) FROM PAVEMENT EDGE
- \* 701106 – 02

OFF-ROAD OPERATIONS, MULTILANE, MORE THAN 15' AWAY
- \* 701201 – 05

LANE CLOSURE, 2L, 2W, DAY ONLY, FOR SPEEDS ≥ 45 MPH
- \* 701301 – 04

LANE CLOSURE, 2L, 2W, SHORT TIME OPERATIONS
- \* 701306 – 04

LANE CLOSURE, 2L, 2W, SLOW MOVING OPERATIONS DAY ONLY, FOR SPEEDS ≥ 45 MPH
- \* 701311 – 03

LANE CLOSURE, 2L, 2W, MOVING OPERATIONS – DAY ONLY
- \* 701336 – 07

LANE CLOSURE, 2L, 2W, WORK AREAS IN SERIES, FOR SPEEDS ≥ 45 MPH
- \* 701400 – 12

APPROACH TO LANE CLOSURE, FREEWAY / EXPRESSWAY
- \* 701401 – 13

LANE CLOSURE, FREEWAY / EXPRESSWAY
- \* 701411 – 09

LANE CLOSURE, MULTILANE, AT ENTRANCE OR EXIT RAMP, FOR SPEEDS ≥ 45 MPH
- \* 701421 – 08

LANE CLOSURE, MULTILANE, DAY OPERATIONS ONLY, FOR SPEEDS ≥ 45 MPH TO 55 MPH
- \* 701426 – 09

LANE CLOSURE, MULTILANE, INTERMITTENT OF MOVING OPERATONS, FOR SPEEDS ≥ 45 MPH
- \* 701427 – 05

LANE CLOSURE, MULTILANE, INTERMITTENT OR MOVING OPERATIONS, FOR SPEEDS ≤ 40 MPH
- \* 701428 – 01

TRAFFIC CONTROL SETUP AND REMOVAL FREEWAY / EXPRESSWAY
- \* 701501 – 06

URBAN LANE CLOSURE, 2L, 2W, UNDIVIDED
- \* 701502 – 09

URBAN LANE CLOSURE, 2L, 2W, WITH BIDIRECTIONAL LEFT TURN LANE
- \* 701601 – 09

URBAN LANE CLOSURE, MULTILANE, 1W OR 2W WITH NON-TRAVERSABLE MEDIAN
- \* 701602 – 10

URBAN LANE CLOSURE, MULTILANE, 2W WITH BI-DIRECTIONAL LEFT TURN LANE
- \* 701606 – 10

URBAN SINGLE LANE CLOSURE, MULTILANE, 2W WITH MOUNTABLE MEDIAN
- 701701 – 10

URBAN LANE CLOSURE, MULTILANE INTERSECTION
- 701801 – 06

SIDEWALK, CORNER OR CROSSWALK CLOSURE
- 701901 – 11

TRAFFIC CONTROL DEVICES

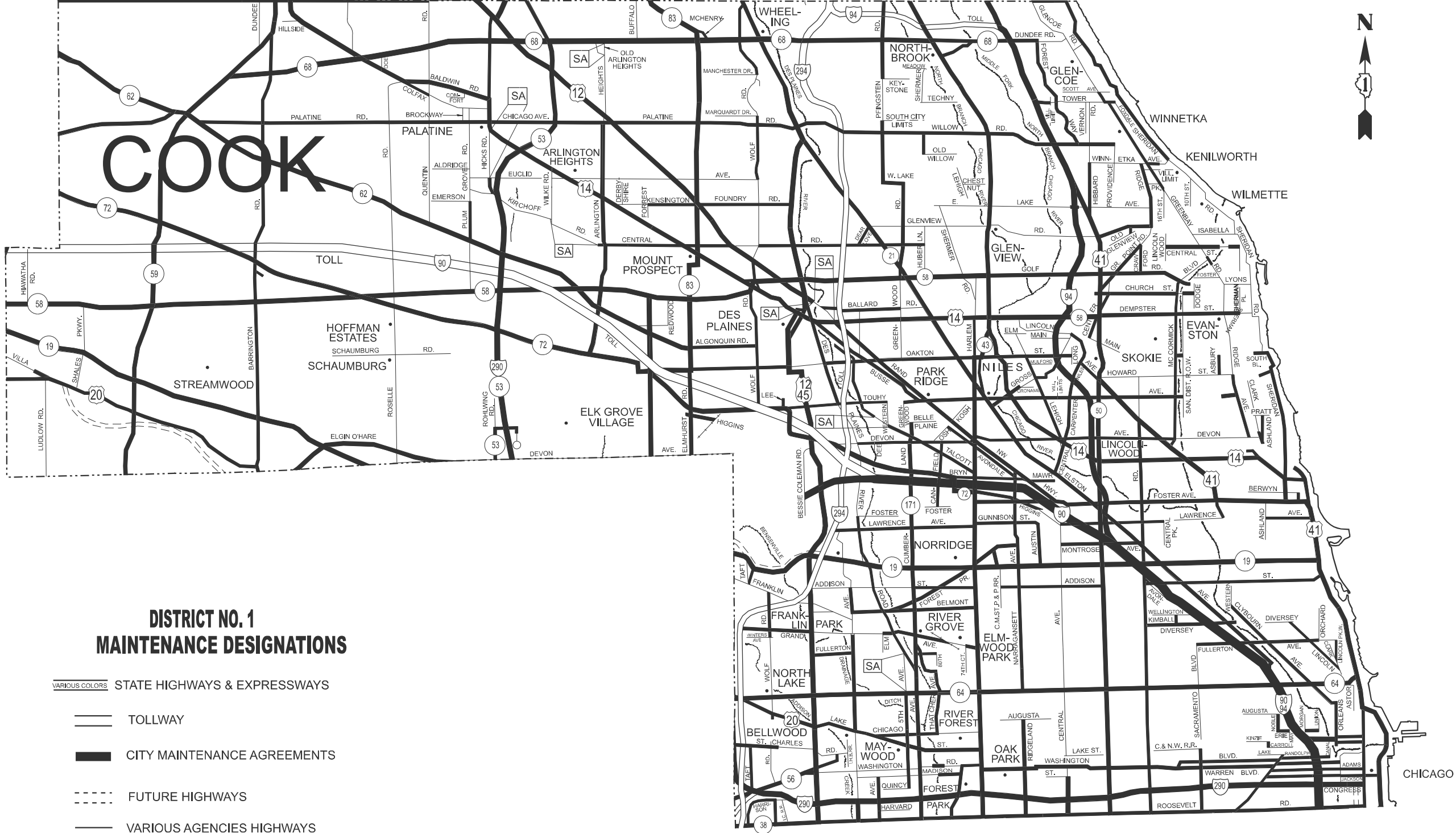
\* MOVING LANE CLOSURES WILL NOT BE PERMITTED ON EXPRESSWAYS

	USER NAME = Yuyang,Deng	DESIGNED -	REVISED -	STATE OF ILLINOIS DEPARTMENT OF TRANSPORTATION	INDEX OF SHEETS AND STATE STANDARDS, AND GENERAL NOTES			F.A. RTE.	SECTION	COUNTY	TOTAL SHEETS	SHEET NO.
		DRAWN -	REVISED -					**	2025-1078-FCN	*	22	2
		CHECKED -	REVISED -					CONTRACT NO. 62Y37				
	PLOT DATE = 12/15/2025	DATE -	REVISED -		SCALE:	SHEET 1	OF 1	SHEETS	STA. 0+00.00	TO STA. 0+00.00	ILLINOIS   FED. AID PROJECT	

\*COOK, DUPAGE, KANE, LAKE, MCHENRY, & WILL

MODEL: SOQ01 [Sheet]  
FILE NAME: c:\pjk\_work\pjk\tothanh.vo@illinois.gov\177287\0115625-shr-SOQ.dgn

SUMMARY OF QUANTITIES			TOTAL QUANTITIES	CONSTRUCTION TYPE CODE 0021						SUMMARY OF QUANTITIES				CONSTRUCTION TYPE CODE 0021								
CODE NO	ITEM	UNIT		100% STATE 0021	100% MCHD 0021					CODE NO	ITEM	UNIT	TOTAL QUANTITIES	100% STATE 0021	100% MCHD 0021							
66400505	CHAIN LINK FENCE, 8'	FOOT	200	175	25					Z0042505	POST REMOVAL AND REPLACEMENT	EACH	2	1	1							
66500105	WOVEN WIRE FENCE, 4'	FOOT	3300	2968	332					Z0074000	TERMINAL POST, TYPE 1	EACH	40	36	4							
X6640100	FENCE RAIL REMOVAL	FOOT	1570	1450	120					Z0074010	TERMINAL POST, TYPE 3 SPECIAL	EACH	6	5	1							
X6640300	CHAIN LINK FENCE REMOVAL	FOOT	60	56	4																	
X6640309	CHAIN LINK GATES (SPECIAL)	SQ FT	700	648	52																	
X6640590	CHAIN LINK FENCE POST SLEEVE REPAIR	EACH	430	393	37																	
X6640714	CHAIN LINK FABRIC, SPECIAL, 5'-0"	FOOT	45	42	3																	
X6640716	CHAIN LINK FABRIC, SPECIAL, 6'-0"	FOOT	1890	1707	183																	
x6640718	CHAIN LINK FABRIC, SPECIAL, 7'-0"	FOOT	10	9	1																	
x6640720	CHAIN LINK FABRIC, SPECIAL, 8'-0"	FOOT	60	55	5																	
X6640722	CHAIN LINK FABRIC, TYPE 1, 4'-0"	FOOT	13771	12441	1330																	
X6640724	CHAIN LINK FABRIC, TYPE 3, SPECIAL	FOOT	475	437	38																	
Z0020210	PULL POST ARRANGEMENT	EACH	3	2	1																	
Z0033200	LINE POST, TYPE 1	EACH	595	543	52																	
Z0033305	LINE POST, TYPE 3 (SPECIAL)	EACH	30	25	5																	
Z0042500	POST (SPECIAL)	EACH	75	66	9																	
		USER NAME = thanh.vo		DESIGNED -		REVISED -		STATE OF ILLINOIS DEPARTMENT OF TRANSPORTATION			SUMMARY OF QUANTITIES				F.A. RTE.	SECTION		COUNTY	TOTAL SHEETS	SHEET NO.		
				DRAWN -		REVISED -									**	2025-1078-FCN		*	22	3		
				CHECKED -		REVISED -									CONTRACT NO. 62Y37							
		PLOT DATE = 11/6/2025		DATE -		REVISED -					SCALE:	SHEET 1	OF 1	SHEETS	STA. 0+00.00	TO STA. 0+00.00	ILLINOIS   FED. AID PROJECT					



**DISTRICT NO. 1  
MAINTENANCE DESIGNATIONS**

- VARIOUS COLORS STATE HIGHWAYS & EXPRESSWAYS
- TOLLWAY
  - CITY MAINTENANCE AGREEMENTS
  - FUTURE HIGHWAYS
  - VARIOUS AGENCIES HIGHWAYS

MODEL: North Cook Map [Sheet]  
FILE NAME: c:\p\work\p\td\thanh.vo\illinois.gov\117287\0115625-shr-details.dgn

USER NAME	= thanh.vo	DESIGNED -	REVISED -
		DRAWN -	REVISED -
		CHECKED -	REVISED -
PLOT DATE	= 11/5/2025	DATE -	REVISED -

STATE OF ILLINOIS  
DEPARTMENT OF TRANSPORTATION

FENCE REPAIR LOCATION MAP  
COOK COUNTY NORTH OF IL. ROUTE 38

SCALE: SHEET 1 OF 14 SHEETS STA. 0+00.00 TO STA. 0+00.00

F.A. RTE.	SECTION	COUNTY	TOTAL SHEETS	SHEET NO.
**	2025-1078-FCN	*	22	4
CONTRACT NO. 62Y37				
ILLINOIS FED. AID PROJECT				

\*COOK, DUPAGE, KANE, LAKE, MCHENRY, & WILL



## DISTRICT NO. 1 MAINTENANCE DESIGNATIONS

- VARIOUS COLORS STATE HIGHWAYS & EXPRESSWAYS
- TOLLWAY
- CITY MAINTENANCE AGREEMENTS
- FUTURE HIGHWAYS
- VARIOUS AGENCIES HIGHWAYS

STATE OF ILLINOIS  
DEPARTMENT OF TRANSPORTATION

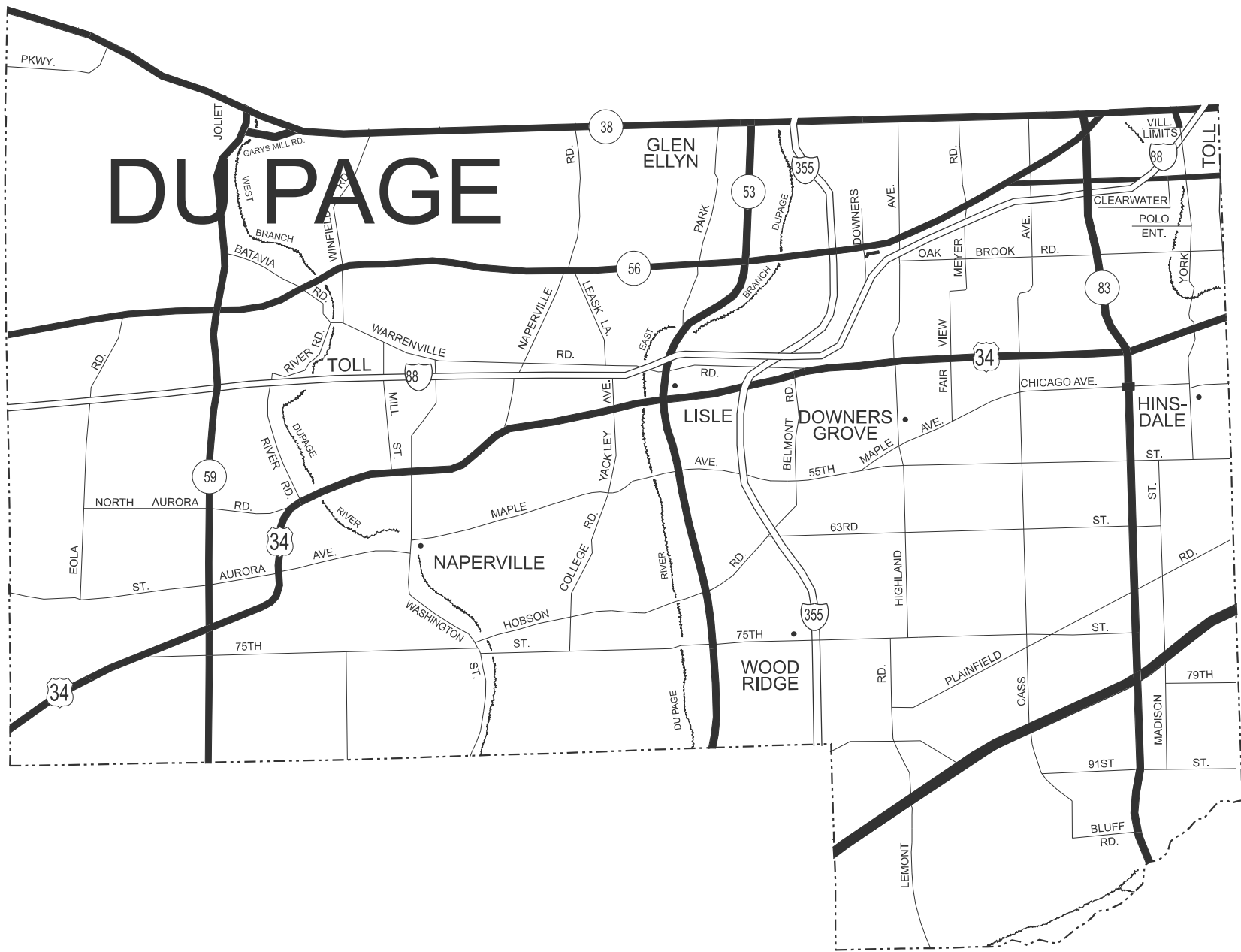
FENCE REPAIR LOCATION MAP  
COOK COUNTY SOUTH OF IL. ROUTE 38

SCALE: SHEET 2 OF 14 SHEETS STA. 0+00.00 TO STA. 0+00.00

F.A. RTE.	SECTION	COUNTY	TOTAL SHEETS	SHEET NO.
**	2025-1078-FCN	*	22	5
CONTRACT NO. 62Y37				

ILLINOIS FED. AID PROJECT \*\*VARIOUS \*COOK, DUPAGE, KANE, LAKE, MCHENRY, & WILL



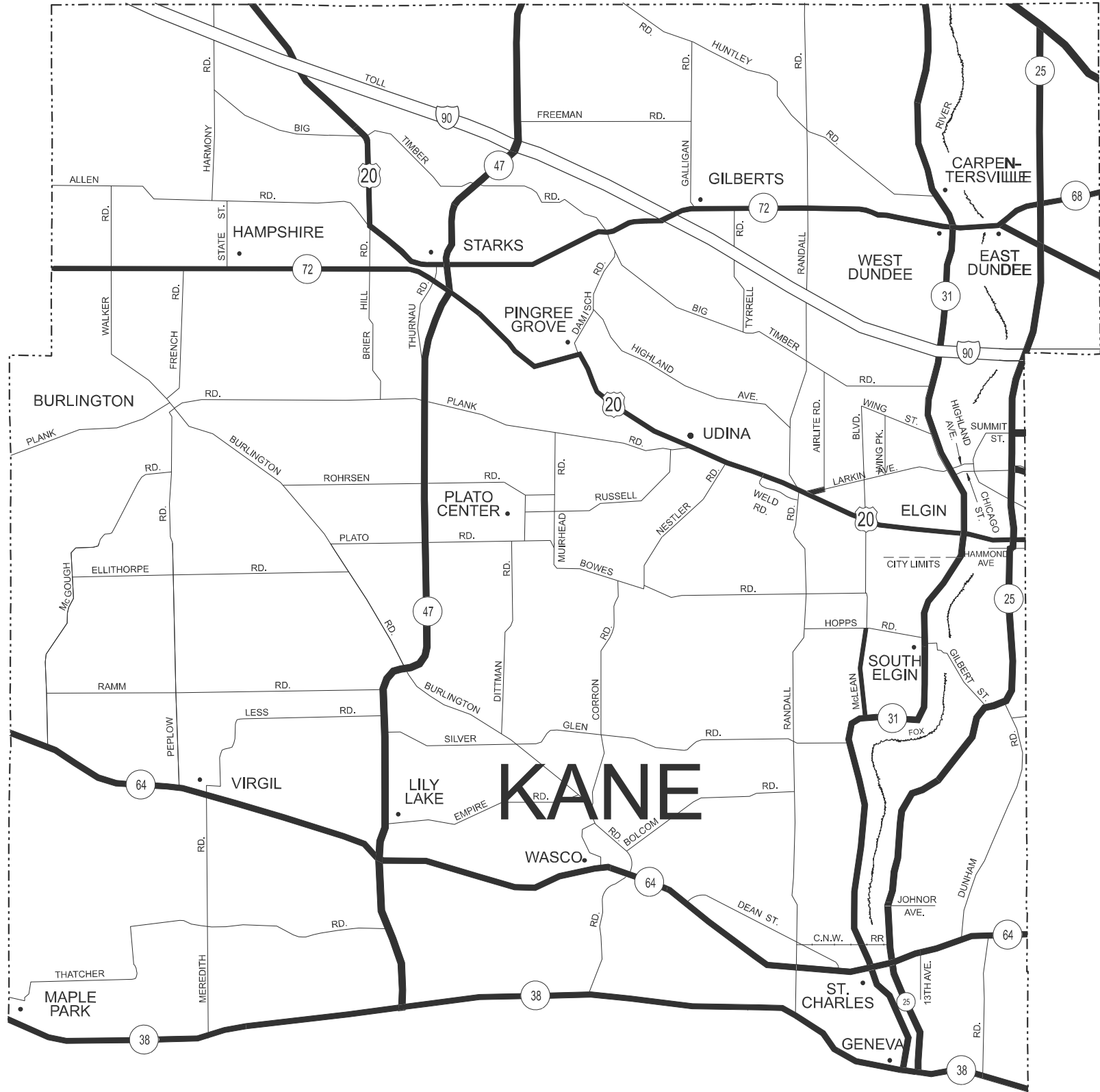


DISTRICT NO. 1  
MAINTENANCE DESIGNATIONS

- VARIOUS COLORS STATE HIGHWAYS & EXPRESSWAYS
- TOLLWAY
  - CITY MAINTENANCE AGREEMENTS
  - FUTURE HIGHWAYS
  - VARIOUS AGENCIES HIGHWAYS

MODEL: DuPage Map [Sheet]  
FILE NAME: c:\p\work\ktd\thanh.vo\illinois.gov\117287\0115625-sht-details.dgn

	USER NAME   =   thanh.vo	DESIGNED   -	REVISED   -	STATE OF ILLINOIS DEPARTMENT OF TRANSPORTATION	FENCE REPAIR LOCATION MAP DUPAGE COUNTY SOUTH OF IL. ROUTE 38					F.A. RTE.	SECTION	COUNTY	TOTAL SHEETS	SHEET NO.
		DRAWN    -	REVISED   -							**	2025-1078-FCN	*	22	7
		CHECKED   -	REVISED   -							CONTRACT NO. 62Y37				
	PLOT DATE   =   11/6/2025	DATE       -	REVISED   -							ILLINOIS   FED. AID PROJECT				
										SCALE:	SHEET 4	OF 14	SHEETS	STA. 0+00.00



DISTRICT NO. 1  
MAINTENANCE DESIGNATIONS

- VARIOUS COLORS STATE HIGHWAYS & EXPRESSWAYS
- TOLLWAY
- CITY MAINTENANCE AGREEMENTS
- FUTURE HIGHWAYS
- VARIOUS AGENCIES HIGHWAYS

MODEL: Kane Map-1 [Sheet]  
FILE NAME: c:\p\work\p\work\thanh.vo@illinois.gov\117287\0115625-sht-details.dgn

USER NAME	= thanh.vo	DESIGNED	-	REVISED	-
		DRAWN	-	REVISED	-
		CHECKED	-	REVISED	-
PLOT DATE	= 11/6/2025	DATE	-	REVISED	-

STATE OF ILLINOIS  
DEPARTMENT OF TRANSPORTATION

FENCE REPAIR LOCATION MAP  
KANE COUNTY NORTH OF IL. ROUTE 38

SCALE: SHEET 5 OF 14 SHEETS STA. 0+00.00 TO STA. 0+00.00

F.A. RTE.	SECTION	COUNTY	TOTAL SHEETS	SHEET NO.
**	2025-1078-FCN	*	22	8
		CONTRACT NO. 62Y37		
		ILLINOIS   FED. AID PROJECT		

\*\*VARIOUS

\*COOK, DUPAGE, KANE, LAKE, MCHENRY, & WILL





**VARIOUS COLORS** STATE HIGHWAYS & EXPRESSWAYS

CITY MAINTENANCE AGREEMENTS

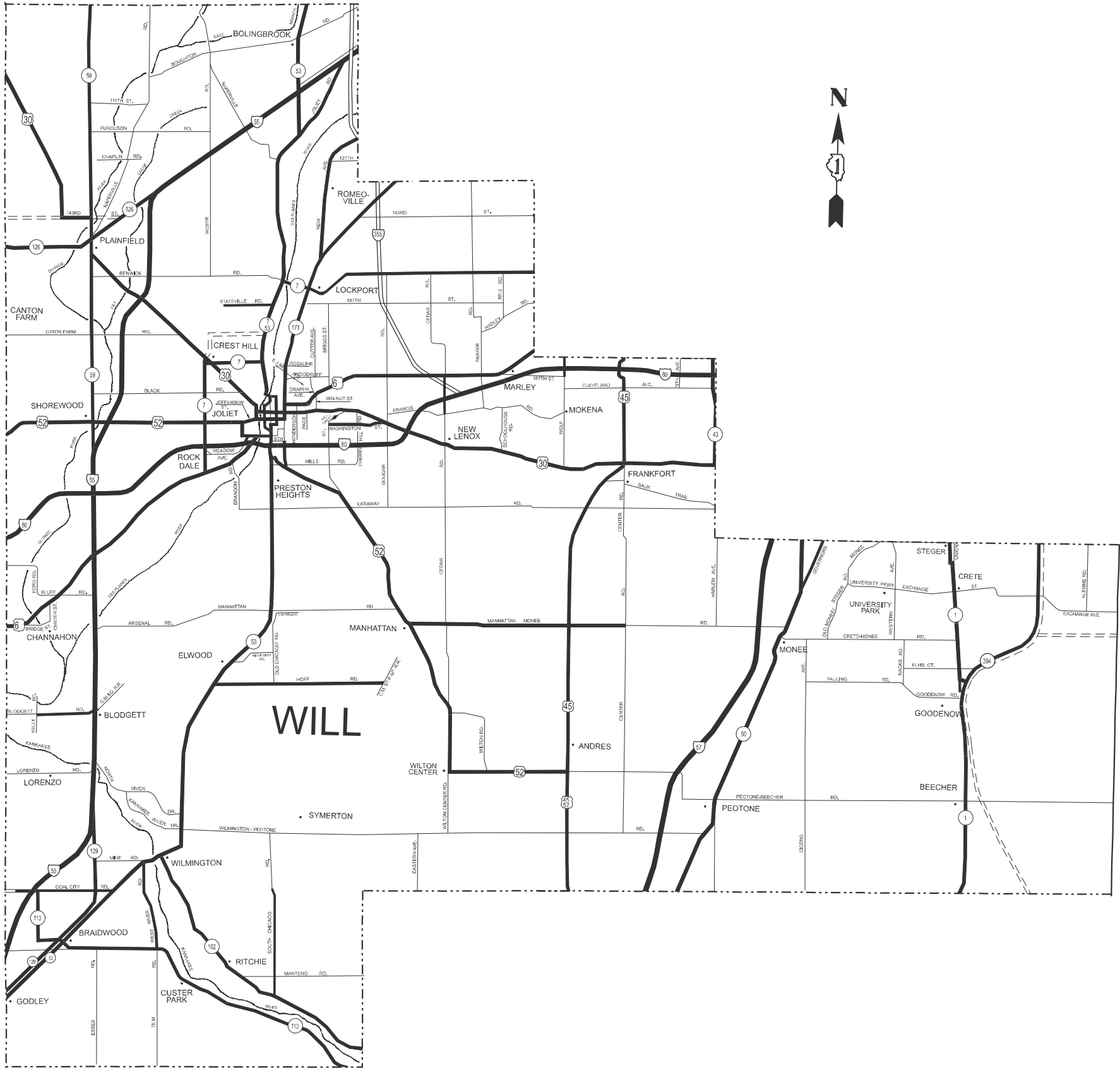
## -----: FUTURE HIGHWAYS

— VARIOUS AGENCIES HIGHWAYS

F.A. RTE.	SECTION	COUNTY	TOTAL SHEETS	SHEET NO.
**	2025-1078-FCN	*	22	9
		CONTRACT NO. 62Y37		
		ILLINOIS	FED. AID PROJECT	

ILLINOIS	FED. AID PROJECT
*COOK, DUPAGE, KANE, LAKE, MCHENRY, & WILL	

MODEL: Kane Map [Sheet]  
FILE NAME: c:\pw\_work\pwidott\thanh.vo@illinois.gov\1177287\115625-sht-details.dgn



## DISTRICT NO. 1 MAINTENANCE DESIGNATIONS

- VARIOUS COLORS STATE HIGHWAYS & EXPRESSWAYS
- TOLLWAY
- CITY MAINTENANCE AGREEMENTS
- FUTURE HIGHWAYS
- VARIOUS AGENCIES HIGHWAYS

STATE OF ILLINOIS  
DEPARTMENT OF TRANSPORTATION

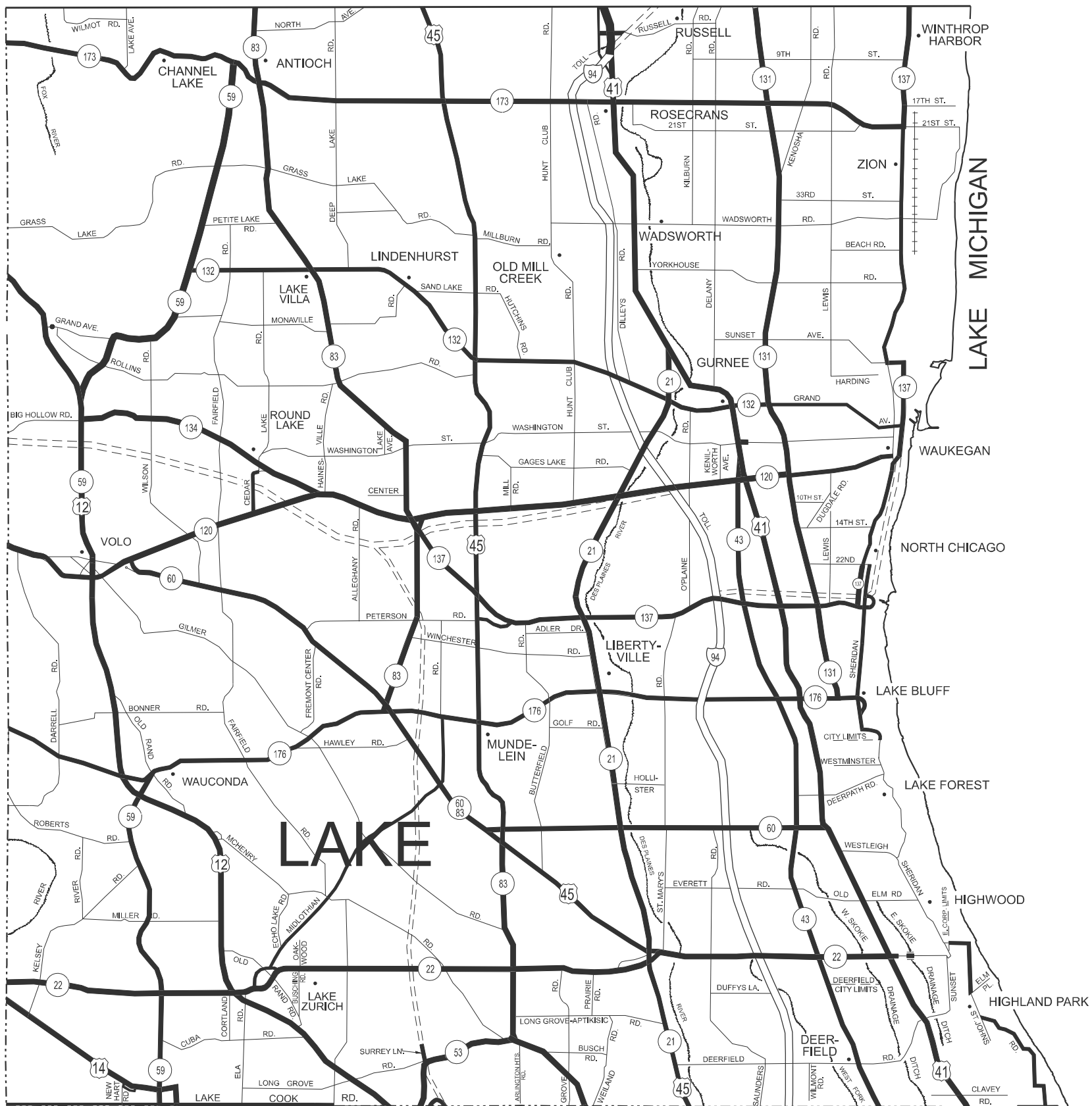
FENCE REPAIR LOCATION MAP  
WILL COUNTY

SCALE: SHEET 7 OF 14 SHEETS STA. 0+00.00 TO STA. 0+00.00

F.A. RTE.	SECTION	COUNTY	TOTAL SHEETS	SHEET NO.
**	2025-1078-FCN	*	22	10
CONTRACT NO. 62Y37				

\*\*VARIOUS

\*COOK, DUPAGE, KANE, LAKE, MCHENRY, & WILL



## DISTRICT NO. 1 MAINTENANCE DESIGNATIONS

## VARIOUS COLORS STATE HIGHWAYS & EXPRESSWAYS

== TOLLWAY

CITY MAINTENANCE AGREEMENTS

----- FUTURE HIGHWAYS

—— VARIOUS AGENCIES HIGHWAYS

USER NAME   = thanh.vo	DESIGNED   -	REVISED   -
	DRAWN       -	REVISED   -
	CHECKED   -	REVISED   -
PLOT DATE   = 11/6/2025	DATE       -	REVISED   -

REVISED	-
REVISED	-
REVISED	-
REVISED	-

**STATE OF ILLINOIS  
DEPARTMENT OF TRANSPORTATION**

## FENCE REPAIR LOCATION MAP LAKE COUNTY

SCALE:	SHEET 8	OF 14	SHEETS	STA. 0+00.00	TO STA. 0+00.00
--------	---------	-------	--------	--------------	-----------------

F.A. RTE.	SECTION	COUNTY	TOTAL SHEETS	SHEET NO.
**	2025-1078-FCN	*	22	11
		CONTRACT NO. 62Y37		
ILLINOIS		FED. AID PROJECT		



VARIOUS COLORS STATE HIGHWAYS & EXPRESSWAYS

===== TOLLWAY

█ CITY MAINTENANCE AGREEMENTS

----- FUTURE HIGHWAYS

===== VARIOUS AGENCIES HIGHWAYS

F.A. RTE.	SECTION	COUNTY	TOTAL SHEETS	SHEET NO.
**	2025-1078-FCN	*	22	12
		CONTRACT NO. 62Y37		
		ILLINOIS	FED. AID PROJECT	

ILLINOIS	FED. AID PROJECT
----------	------------------

\*COOK, DUPAGE, KANE, LAKE, MCHENRY, & WILL

MODEL: McHenry Map [Sheet]  
FILE NAME: c:\pw\_work\pwidott\thanh.vo@illinois.gov\177287D115625-sht-details.dgn

NOTE  
\* MAXIMUM POST SPACING SHALL BE 3 m (10')

\* C&C  
EXCEPT WHERE OTHERWISE SHOWN ON PLANS

3 m (10') C&C \* 250 (10) 1 LIGHT STANDARD 250 (10) 3 m (10') C&C \*

MIN. 235 (9 1/2) EXPANSION TOP OF RETAINING WALL

A technical line drawing of a mechanical assembly. It features a vertical cylinder on the left. A horizontal flange or bracket is attached to its side, containing a small circular hole. A horizontal cylinder is connected to this flange, extending to the right. A dashed vertical line is drawn through the center of the vertical cylinder, passing behind the flange and the horizontal cylinder, likely indicating an axis of symmetry or a centerline.

This technical drawing shows a cross-section of a mechanical assembly. A horizontal shaft is shown with a keyway. A pulley is mounted on the shaft, with a key inserted into the keyway. The pulley has a central hub and a larger outer rim. The drawing uses standard engineering conventions, including break lines to indicate that the assembly is longer than shown.

MINIMUM

S

S

CLOSURE

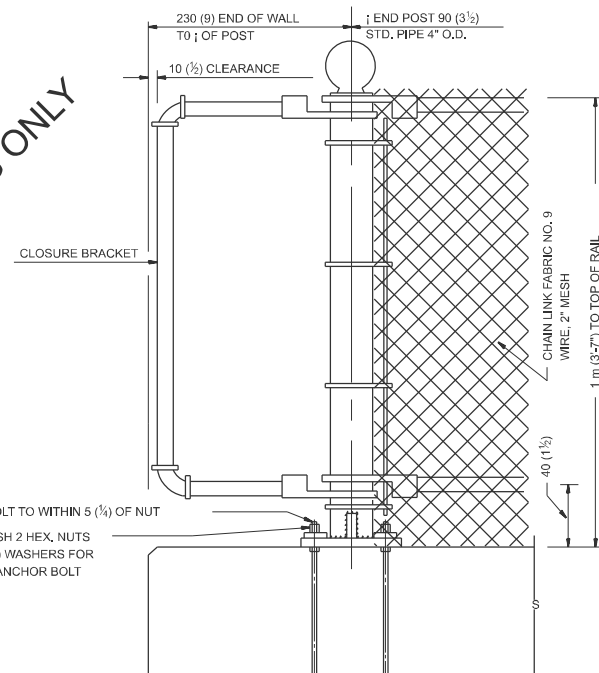
FOR INFORMATIONAL PURPOSES ONLY

CUT BOLT TO WITHIN

FURNISH 2 HEX, NUT

2-50 (2) WASHERS FOR

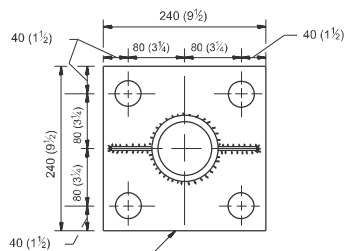
EACH ANCHOR BOLT



20 (3¼") 360 (1'-2") ANCHOR BOLTS  
FURNISH  
4 BOLTS EACH POST PLACE BOLTS IN  
FORM BEFORE POURING WALL CONCRETE.

Technical drawing of a 75 (3) I-5.7 Line Post. The main drawing shows a cross-section of the post, which is a vertical I-beam with a cross-hatched pattern. The top and bottom flanges are shown with anchor bolts. A detail view at the top right shows the anchor bolt being cut and welded to the top flange, with the text "CUT AND WELD TO SHAPE GRIND TOP SMOOTH". A dimension line at the bottom indicates the "ANCHOR BOLT DETAIL" and "SAME AS END POST".

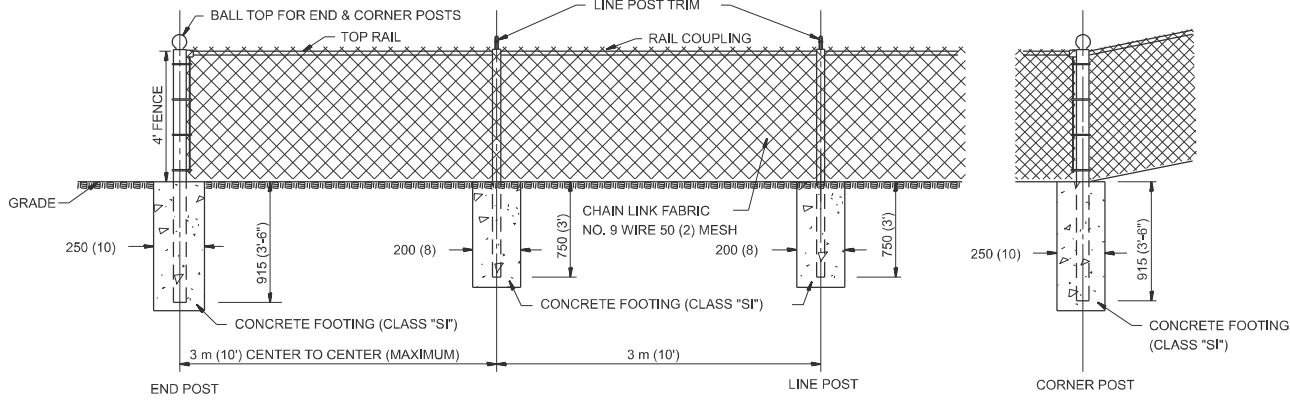
NOTE: EXP. COUPLING TO APPEAR IN TOP AND  
BOTTOM RAILS  
WHERE EVER EXP. JT. APPEARS IN  
STRUCTURE.



NOTE:  
POST, PLATE AND GUSSET ASSEMBLY SHALL  
BE GALVANIZED AFTER ALL CUTTING,  
DRILLING, WELDING, AND FABRICATION HAVE  
BEEN COMPLETED, THE GALVANIZED COATING  
SHALL CONFORM TO THE REQUIREMENTS OF  
AASHTO M 120. THE GALVANIZED COATING  
SHALL NOT BE LESS THAN  
610 G/SQ M (2.0 OZ./SQ. FT.) OF SURFACE.

MODEL: Ped Barr Ty III [Sheet]  
FILE NAME: c:\pw\_work\pwidott\hanh.vo@illinois.gov\1177287\115625-sht-details.dgn

\*\*VARIOUS                      \*COOK, DUPAGE, KANE, LAKE, MCHENRY, & WILL

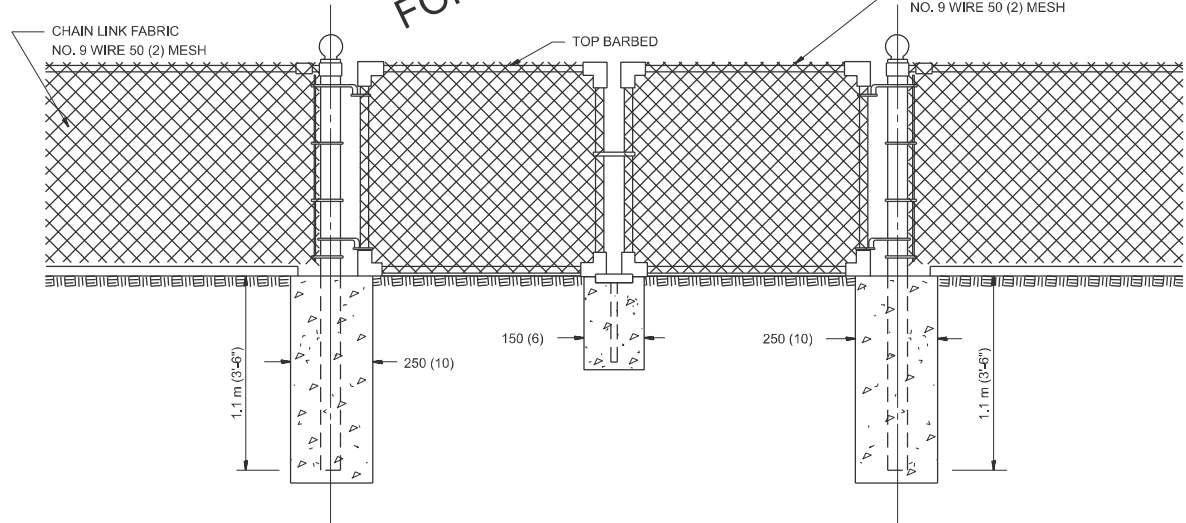


CHAIN LINK FENCE

CHAIN LINK FENCE

FOR INFORMATIONAL PURPOSES ONLY

CHAIN LINK FABRIC  
NO. 9 WIRE 50 (2) MESH



DRIVE GATE 1 m (3'-7") X 3 m (10')



## FORK LATCH



## GATE REST

ALL DIMENSIONS ARE IN MILLIMETERS  
(INCHES)  
UNLESS OTHERWISE SHOWN.

NOTES:

THE CHAIN LINK FENCE AS SHOWN HEREIN  
SHALL BE CONSTRUCTED AT SUCH LOCATIONS  
AS SHOWN ON PLANS AND IN ACCORDANCE  
WITH THE SPECIAL PROVISIONS  
THE ENGINEER SHALL ESTABLISH ALL  
NECESSARY LINE AND GRADE PRIOR TO  
THE ERECTION OF THE FENCE IN CONFORMANCE  
WITH THE PLANS

USER NAME = thanh.vo	DESIGNED -	REVISED -
	DRAWN -	REVISED -
	CHECKED -	REVISED -
PLOT DATE = 11/6/2025	DATE -	REVISED -

**STATE OF ILLINOIS  
DEPARTMENT OF TRANSPORTATION**

**CHAIN LINK FENCE**  
**STD 10-SS-506 B**

SCALE:	SHEET 11	OF 14	SHEETS	STA. 0+00.00	TO STA. 0+00.00
--------	----------	-------	--------	--------------	-----------------

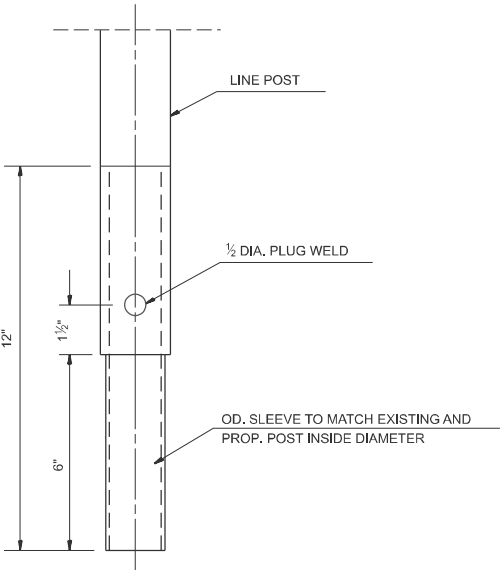
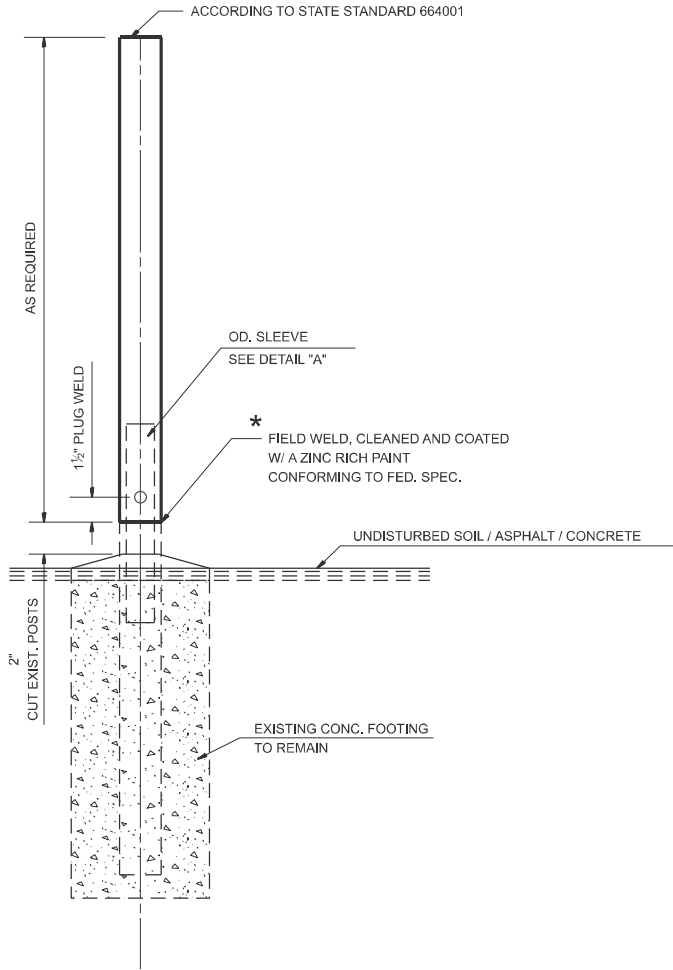
F.A. RTE.	SECTION	COUNTY	TOTAL SHEETS	SHEET NO.
**	2025-1078-FCN	*	22	14
CONTRACT NO. 62Y37				
ILLINOIS		FED. AID PROJECT		

\*\*VARIOUS

ILLINOIS	FED. AID PROJECT
----------	------------------

\*COOK, DUPAGE, KANE, LAKE, MCHENRY, & WILL

GENERAL NOTES:  
THIS WORK CONSISTS OF FURNISHING ALL LABOR, MATERIALS, TOOLS AND EQUIPMENT TO REPAIR CHAIN LINK FENCE POST SLEEVE AS SHOWN ON THE PLANS OR AS DIRECTED BY THE ENGINEER, AND IN ACCORDANCE WITH STATE STANDARD 664001.  
BASIS OF PAYMENT: THIS WORK SHALL BE PAID FOR AT THE CONTRACT UNIT PRICE EACH FOR "CHAIN LINK FENCE POST SLEEVE REPAIR" WHICH PRICE SHALL BE PAYMENT IN FULL TO COMPLETE THE WORK AS SPECIFIED HEREIN.



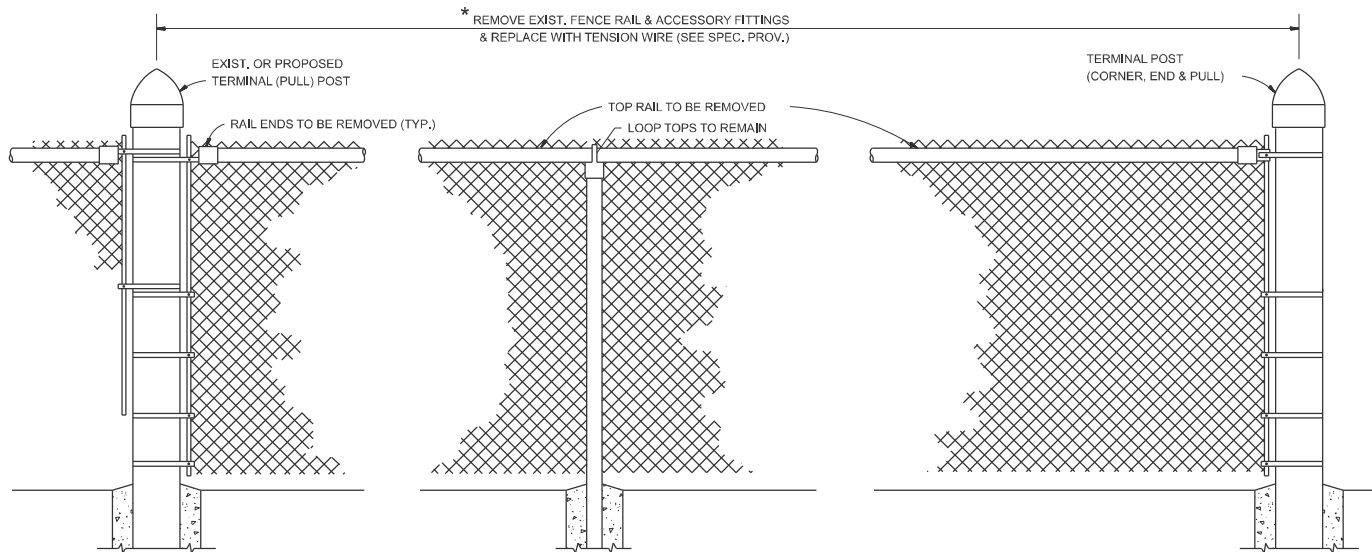
SLEEVE DET. DWG  
DETAIL "A"  
SLEEVE DETAIL

\* THIS WORK SHALL BE INCLUDED IN THE COST OF THE PAY ITEM "CHAIN LINK FENCE POST SLEEVE REPAIR"

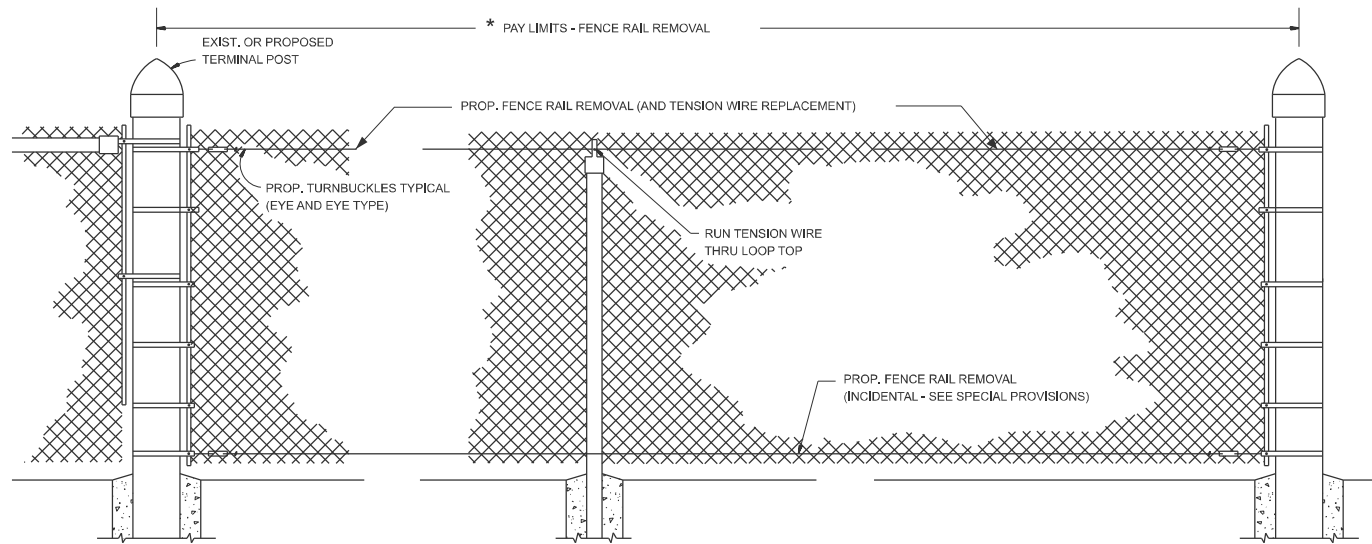
MODEL: Chain Link Fence Post Sleeve (Sheet)  
FILE NAME: c:\p\work\pwk\thanh.vo@illinois.gov\17287\D115625-sht-details.dgn

	USER NAME	= thanh.vo	DESIGNED	-	REVISED	-	STATE OF ILLINOIS DEPARTMENT OF TRANSPORTATION	CHAIN LINK FENCE POST SLEEVE REPAIR DETAIL					F.A. R.T.E.	SECTION	COUNTY	TOTAL SHEETS	SHEET NO.
			DRAWN	-	REVISED	-							**	2025-1078-FCN	*	22	15
			CHECKED	-	REVISED	-							CONTRACT NO. 62Y37				
	PLOT DATE	= 11/6/2025	DATE	-	REVISED	-							ILLINOIS   FED. AID PROJECT				
	SCALE:												SHEET 12 OF 14 SHEETS				
											STA. 0+00.00 TO STA. 0+00.00						
											**VARIOUS						
											*COOK, DUPAGE, KANE, LAKE, MCHENRY, & WILL						

MODEL: DP Ped Barr and Chn Lnk Fen w Tension Wire and Fen Rail Rem [Sheet]  
FILE NAME: c:\pawork\pawork\thanh.vo\illinois.gov\117287\115625-sth-details.dgn



EXIST. CHAIN LINK FENCE WITH TOP RAIL



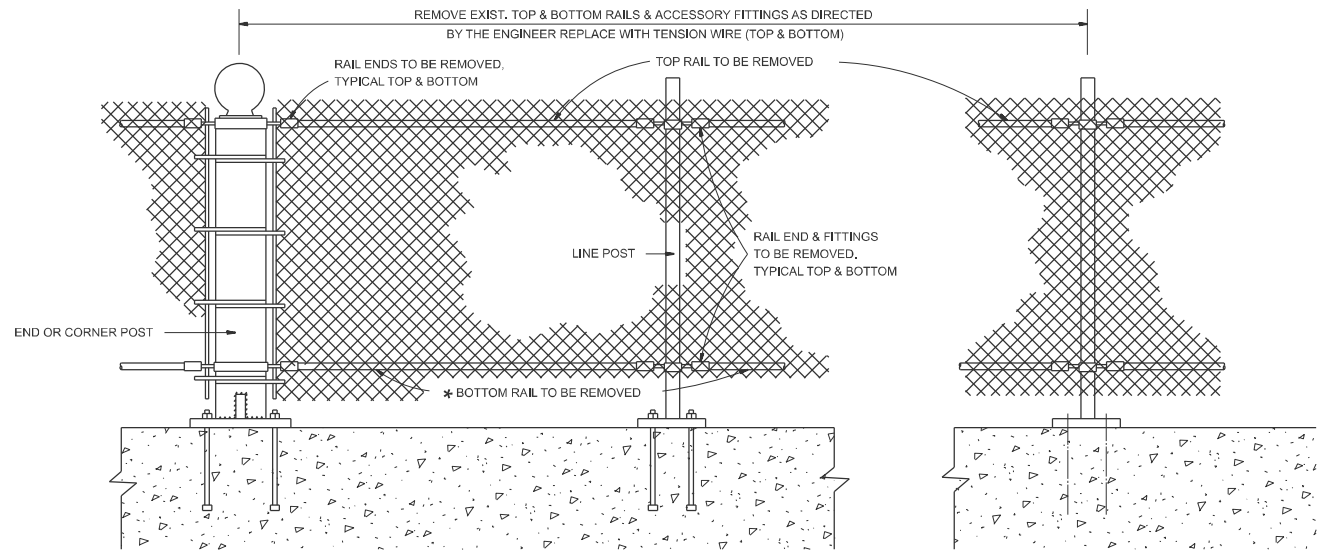
PROP. CHAIN LINK FENCE WITH "FENCE RAIL REMOVAL"

\* THE ENGINEER IN CHARGE SHALL DETERMINE THE LENGTH OF FENCE RAIL TO BE REMOVED & REPLACED WITH "TENSION WIRE"

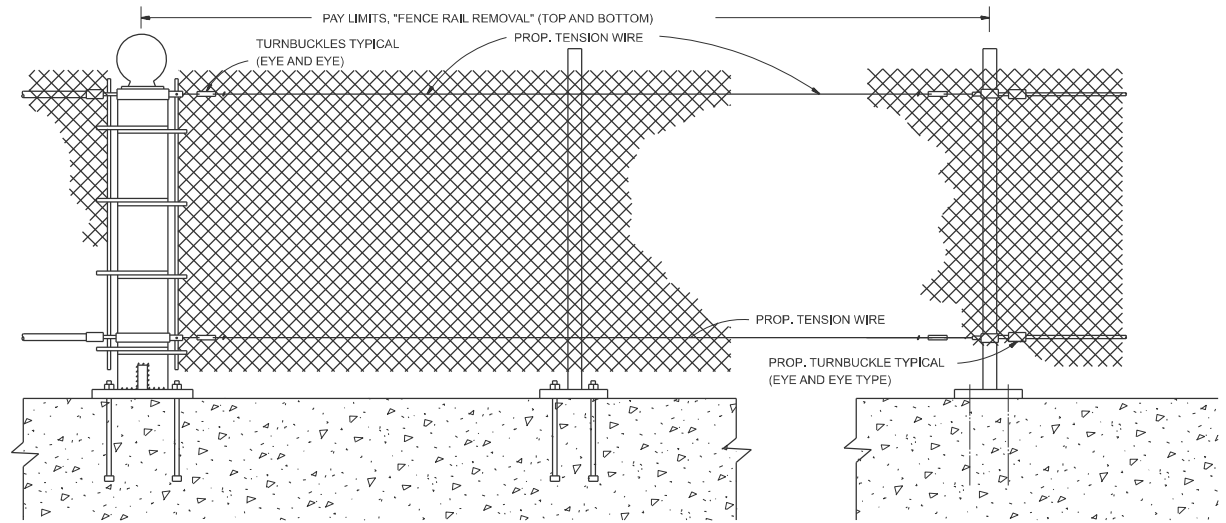
**GENERAL NOTES**

FENCE RAIL REMOVAL: THIS ITEM CONSISTS OF REMOVING EXISTING TOP OR BOTTOM RAIL (DAMAGED OR UNDAMAGED) AND REPLACING WITH TENSION WIRE. BOTTOM TENSION WIRE SHALL BE CONSIDERED INCIDENTAL EXCEPT AT LOCATIONS OF EXISTING BOTTOM RAIL REMOVAL.

TENSION WIRE: THIS ITEM CONSISTS OF INSTALLING TENSION WIRE, TOP OR BOTTOM, WHERE TOP OR BOTTOM RAIL IS NON-EXISTENT, OR WHERE EXISTING DAMAGED TENSION WIRE IS REMOVED AND REPLACED BY TENSION WIRE. ALL WORK AND MATERIALS SHALL BE IN ACCORDANCE WITH THE PLANS, SPECIAL PROVISIONS, STANDARD SPECIFICATIONS AND DETAILS OF OTHER FENCE COMPONENT PARTS SHALL BE MEASURED AND PAID FOR SEPARATELY AS DESCRIBED IN THE SPECIAL PROVISIONS.



EXIST. PEDESTRIAN BARRIER TYPE 3 WITH TOP AND BOTTOM RAILS



PROP. PEDESTRIAN BARRIER TYPE 3 WITH FENCE RAIL REMOVAL

ALL DIMENSIONS ARE IN MILLIMETERS (INCHES) UNLESS OTHERWISE SHOWN.

USER NAME	= thanh.vo	DESIGNED	-	REVISED	-
		DRAWN	-	REVISED	-
		CHECKED	-	REVISED	-
PLOT DATE	= 11/6/2025	DATE	-	REVISED	-

STATE OF ILLINOIS  
DEPARTMENT OF TRANSPORTATION

PROPOSED PEDESTRIAN BARRIER AND CHAIN LINK  
FENCE WITH TENSION WIRE AND FENCE RAIL REMOVAL

SCALE: SHEET 13 OF 14 SHEETS STA. 0+00.00 TO STA. 0+00.00

F.A. RTE.	SECTION	COUNTY	TOTAL SHEETS	SHEET NO.
**	2025-1078-FCN	*	22	16
CONTRACT NO. 62Y37				
ILLINOIS FED. AID PROJECT				

\*\*VARIOUS

\*COOK, DUPAGE, KANE, LAKE, MCHENRY, & WILL





TO THE REQUIREMENTS  
ED IN THE REPAIR WORK  
AS POSTS ADJACENT TO THE  
DIRECTED BY THE ENGINEER,  
MITTED.

REMOVAL OF EXISTING FENCE POSTS BY DRILLING  
OR CORING AND GROUTING A NEW FENCE POST  
(LINE TERMINAL, END CORNER AND GATE) IN  
ACCORDANCE WITH THE APPLICABLE PORTIONS  
OF SECTIONS 664 AND 1025 OF THE STANDARD  
SPECIFICATIONS.

EXISTING LOCATION POST MUST BE USED.  
NO NEW POST HOLES WILL BE ALLOWED.

EXIST. CONC. PAD

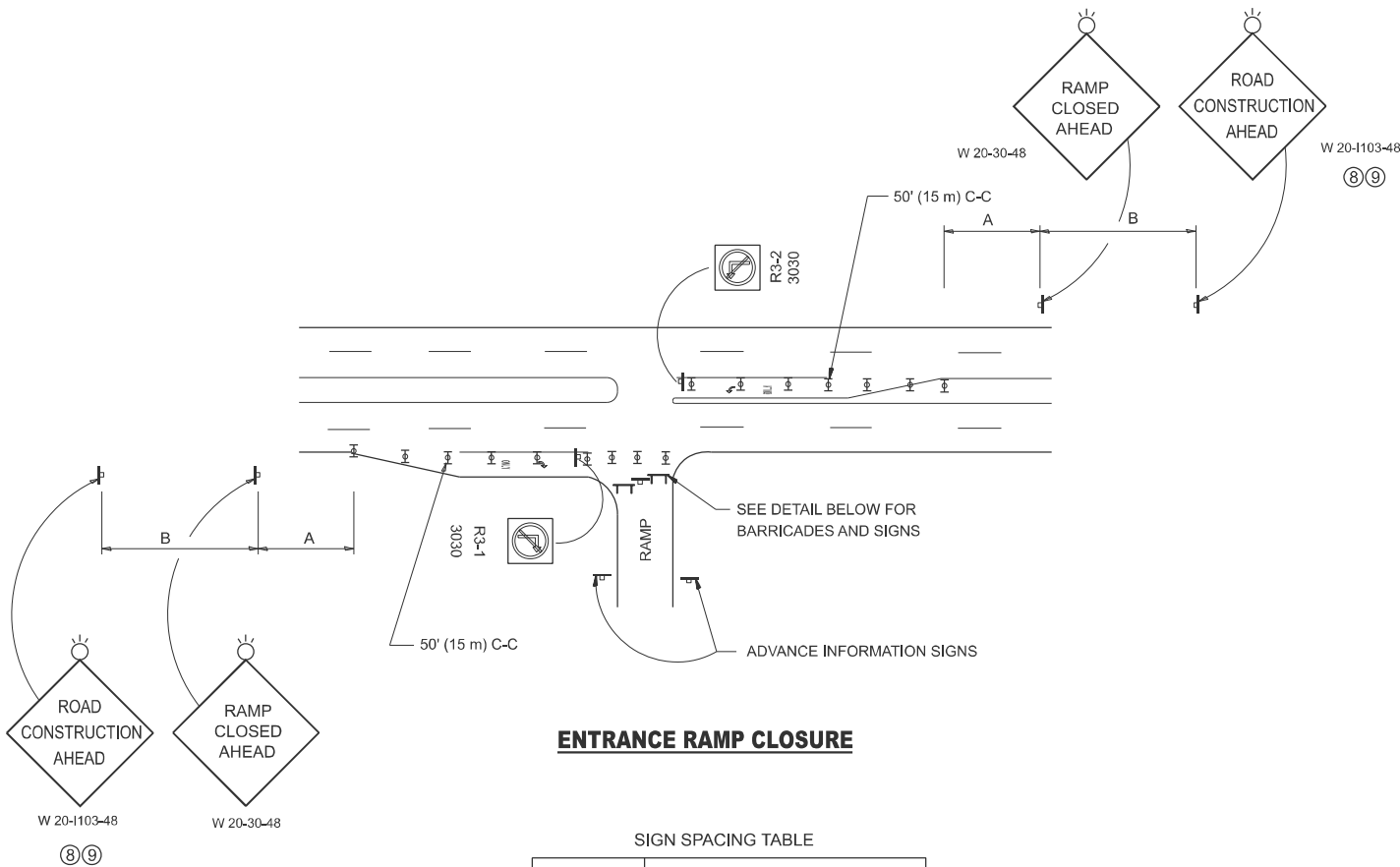
1/4" ± 1/2"  
MIN.

EXIST. CONC. POST FOUNDATION

POST REMOVAL AND REPLACEMENT  
SHALL BE FULL DEPTH.

POST REMOVAL AND REPLACEMENT SHALL BE FULL DEPTH.

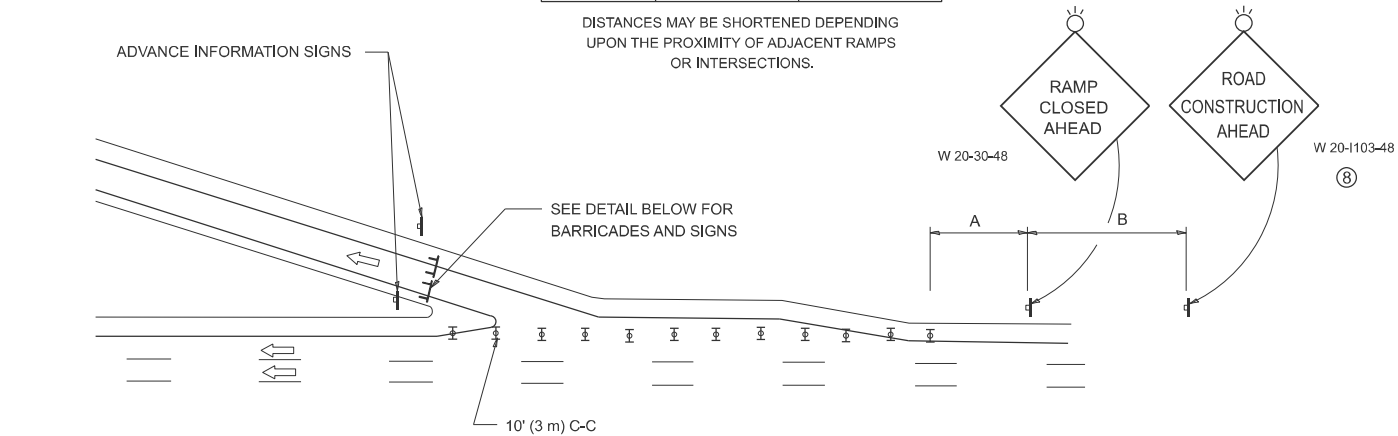
\*COOK, DUPAGE, KANE, LAKE, MCHENRY, & WILL



ENTRANCE RAMP CLOSURE

FACILITY	SIGN SPACING TABLE	
	A	B
EXPRESSWAY >24 HOURS	1000' (300 m)	1500' (450 m)
EXPRESSWAY ≤24 HOURS	500' (150 m)	500' (150 m)
ARTERIAL 55 MPH	500' (150 m)	500' (150 m)
ARTERIAL 50-45 MPH	350' (100 m)	350' (100 m)
ARTERIAL <45 MPH	200' (60 m)	200' (60 m)

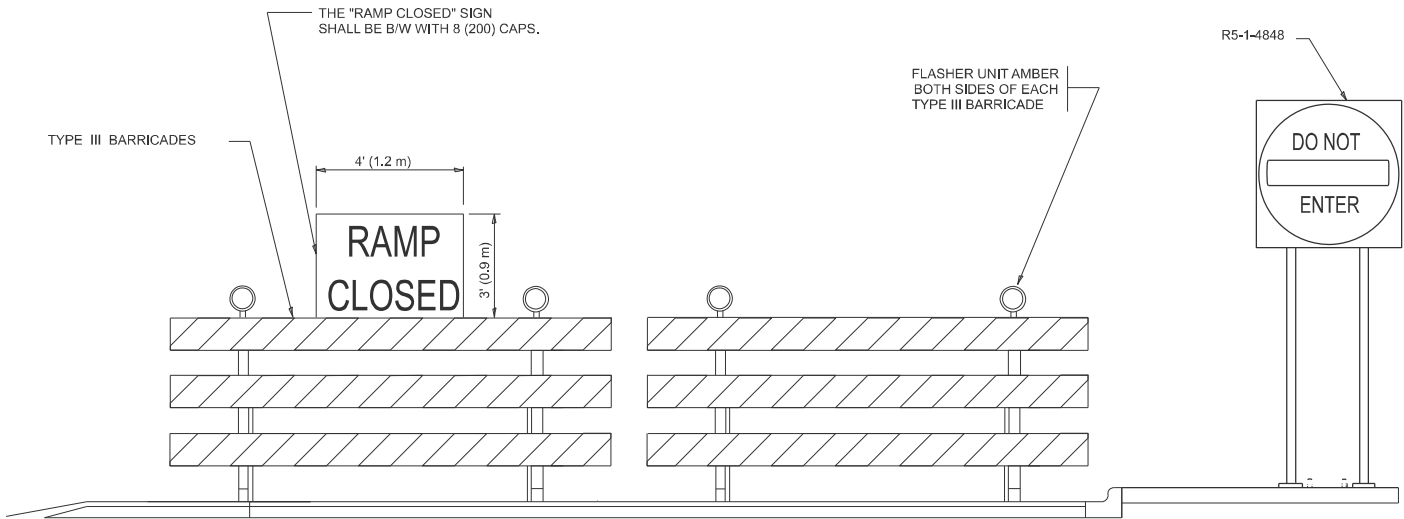
DISTANCES MAY BE SHORTENED DEPENDING UPON THE PROXIMITY OF ADJACENT RAMPS OR INTERSECTIONS.



EXIT RAMP CLOSURE

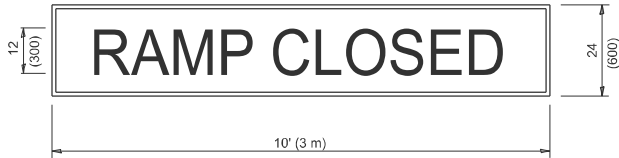
SYMBOLS

- TYPE II BARRICADE OR DRUM
- TYPE III BARRICADE WITH 2 FLASHING LIGHTS



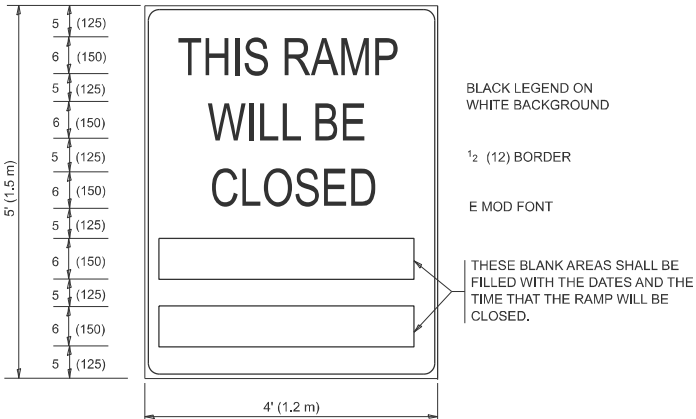
DETAIL FOR REQUIRED BARRICADES & SIGNS

RAMP CLOSURE ADVANCE WARNING SIGN



BLACK LEGEND ON ORANGE BACKGROUND MOUNTED DIAGONALLY  
E MOD FONT  
1 (25) BORDER

THESE SIGNS ARE REQUIRED ON ALL THE EXIT GUIDE SIGNS FOR EXIT RAMPS THAT WILL BE CLOSED FOR MORE THAN FOUR (4) CONSECUTIVE DAYS.



BLACK LEGEND ON WHITE BACKGROUND

1/2 (12) BORDER

E MOD FONT

THESE BLANK AREAS SHALL BE FILLED WITH THE DATES AND THE TIME THAT THE RAMP WILL BE CLOSED.

THESE SIGNS ARE REQUIRED ON BOTH SIDES OF THE RAMP, MINIMUM OF 1 WEEK IN ADVANCE OF THE CLOSURE.

THESE SIGNS SHALL BE FABRICATED AND PAID FOR ACCORDING TO THE TEMPORARY INFORMATION SIGNING SPECIAL PROVISION

GENERAL NOTES:

- CONES MAY BE SUBSTITUTED FOR DRUMS OR TYPE II BARRICADES DURING DAY OPERATIONS. CONES SHALL BE A MINIMUM OF 28 (700) HIGH.
- VERTICAL BARRICADES SHALL NOT BE USED FOR RAMP CLOSURES.
- A FLAGGER SHALL BE POSITIONED AT EACH CLOSED RAMP THAT IS OPEN TO CONSTRUCTION VEHICLES, PRECEDED BY A W20-7 FLAGGER WARNING SIGN.
- ALL ROUTE MARKERS AND TRAILBLAZER ASSEMBLIES WHICH DIRECT MOTORISTS TO A CLOSED ENTRANCE RAMP SHALL BE COVERED WHEN THE RAMP IS CLOSED FOR MORE THAN FOUR (4) DAYS.
- THE SIGNING AND BARRICADING WHICH IS REQUIRED BY THIS DETAIL SHALL BE INCLUDED IN THE COST OF TRAFFIC CONTROL AND PROTECTION (EXPRESSWAYS).
- AUTHORIZATION FROM THE DISTRICT'S BUREAU OF TRAFFIC IS REQUIRED FOR ALL RAMP CLOSURES.
- THE RAMP CLOSURE ADVANCE INFORMATION SIGNS SHALL BE ERECTED IF THE CLOSURE TIME EXCEEDS TWENTY-FOUR (24) HOURS. ADDITIONAL ADVANCE WARNING SIGNS ON EXIT GUIDE SIGNING WILL BE REQUIRED FOR EXIT RAMP CLOSURES THAT EXCEED FOUR (4) DAYS IN LENGTH
- ROAD CONSTRUCTION AHEAD SIGNS MAY BE OMITTED WHEN THIS DETAIL IS USED IN CONJUNCTION WITH OTHER TRAFFIC CONTROL THAT ALREADY INCLUDES A ROAD CONSTRUCTION AHEAD SIGN.
- ARTERIAL ROAD CONSTRUCTION AHEAD SIGNS SHALL BE INSTALLED ON THE LEFT SIDE OF TRAFFIC IF THE MEDIAN IS MORE THAN 10 FT WIDE.

ALL DIMENSIONS ARE IN INCHES (MILLIMETERS) UNLESS OTHERWISE SHOWN.

STATE OF ILLINOIS  
DEPARTMENT OF TRANSPORTATION

ENTRANCE AND EXIT\_RAMP  
CLOSURE DETAILS

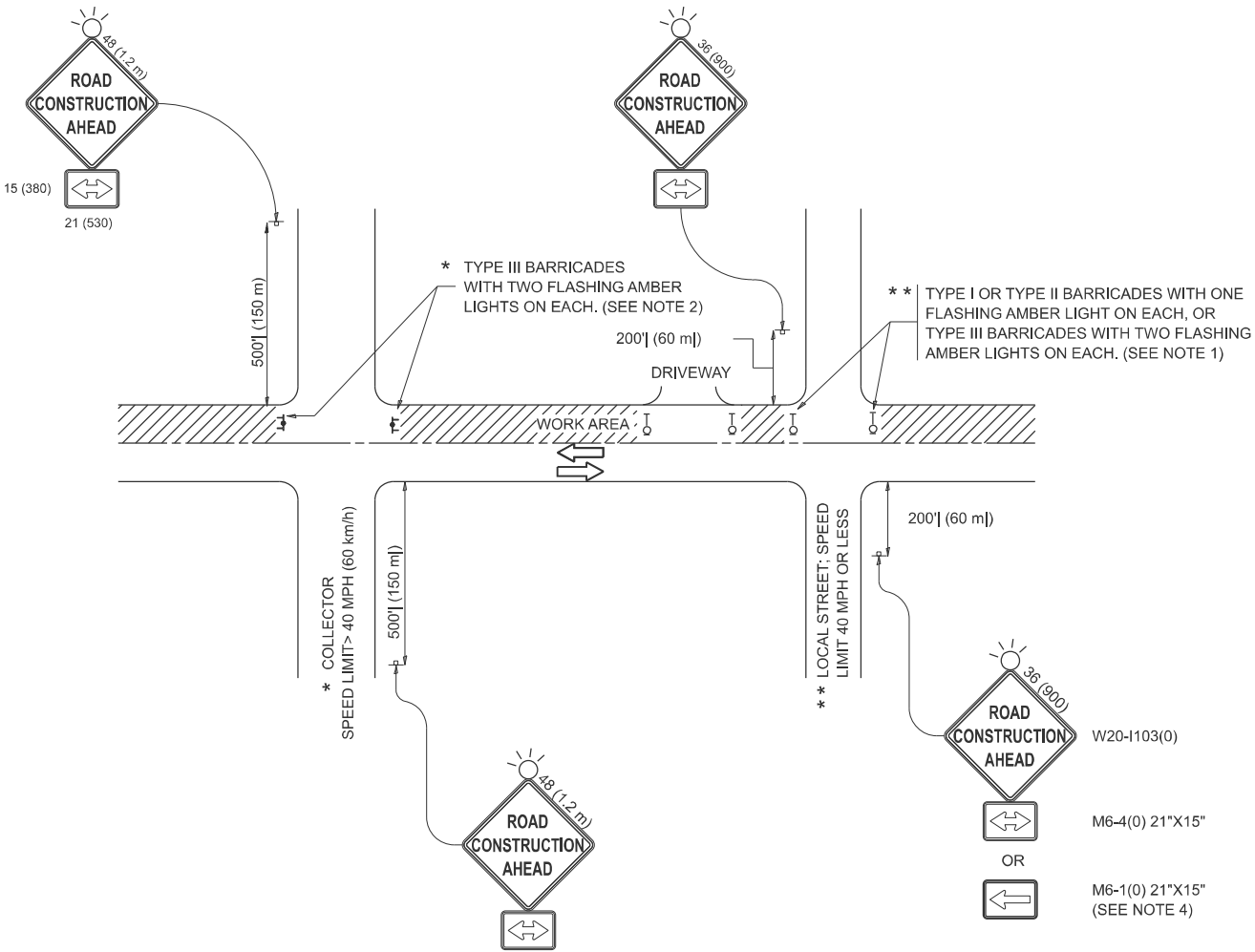
F.A. RTE.	SECTION	COUNTY	TOTAL SHEETS	SHEET NO.
**	2025-1078-FCN	*	22	18
TC-08		CONTRACT NO. 62Y37		

SCALE: NONE SHEET 1 OF 1 SHEETS STA. TO STA.

\*\*VARIOUS

ILLINOIS FED. AID PROJECT  
\*COOK, DUPAGE, KANE, LAKE, MCHENRY, & WILL

MODEL: TC-10 [Sheet]  
FILE NAME: c:\p\work\pwid\thanh.vo@illinois.gov\117287\0115625-81t-Dist\Stds.dgn



NOTES:

- SIDE ROAD WITH A SPEED LIMIT OF 40 MPH (60 km/h) OR LESS AS SHOWN ON THE DRAWING AND AS DIRECTED BY THE ENGINEER:
  - ONE "ROAD CONSTRUCTION AHEAD" SIGN 36 x 36 (900x900) WITH A FLASHER MOUNTED ON IT APPROXIMATELY 200' (60 m) IN ADVANCE OF THE MAIN ROUTE.
  - THE CLOSED PORTION OF THE MAIN ROUTE SHALL BE PROTECTED BY BLOCKING WITH TYPE I, TYPE II OR TYPE III BARRICADES, 1/3 OF THE CROSS SECTION OF THE CLOSED PORTION.
- SIDE ROAD WITH A SPEED LIMIT GREATER THAN 40 MPH (60 km/h) AS SHOWN ON THE DRAWING AND AS DIRECTED BY THE ENGINEER:
  - ONE "ROAD CONSTRUCTION AHEAD" SIGN 48 x 48 (1.2 m x 1.2 m) WITH A FLASHER MOUNTED ON IT APPROXIMATELY 500' (150 m) IN ADVANCE OF THE MAIN ROUTE.
  - THE CLOSED PORTION OF THE MAIN ROUTE SHALL BE PROTECTED BY BLOCKING WITH TYPE III BARRICADES, 1/2 OF THE CROSS SECTION OF THE CLOSED PORTION.
- CONES MAY BE SUBSTITUTED FOR BARRICADES OR DRUMS AT HALF THE SPACING DURING DAY OPERATIONS. CONES SHALL BE A MINIMUM OF 28 (710) IN HEIGHT.
- WHEN THE SIDE ROAD LIES BETWEEN THE BEGINNING OF THE MAINLINE SIGNING AND THE WORK ZONE, A SINGLE HEADED ARROW (M6-1) SHALL BE USED IN LIEU OF THE DOUBLE HEADED ARROW (M6-4).
- WHEN WORK IS BEING PERFORMED ON A SIDE ROAD OR DRIVEWAY, FOLLOW THE APPLICABLE STANDARD(S). THE DIRECTIONAL ARROW (M6-1 OR M6-4) SHALL BE COVERED OR REMOVED WHEN NO LONGER CONSISTENT WITH THE TRAFFIC CONTROL SET-UP.
- ADVANCE WARNING SIGNS ARE TO BE OMITTED ON DRIVEWAYS UNLESS OTHERWISE SPECIFIED IN THE PLANS OR BY THE ENGINEER.
- THE TRAFFIC CONTROL AND PROTECTION FOR SIDE ROADS, INTERSECTIONS, AND DRIVEWAYS SHALL BE INCLUDED IN THE COST OF SPECIFIED TRAFFIC CONTROL STANDARDS OR ITEMS.

All dimensions are in inches (millimeters) unless otherwise shown.

	USER NAME = thanh.vo	DESIGNED - L.H.A.	REVISED - T. RAMMACHER 01-06-00	STATE OF ILLINOIS DEPARTMENT OF TRANSPORTATION	TRAFFIC CONTROL AND PROTECTION FOR SIDE ROADS, INTERSECTIONS, AND DRIVEWAYS				F.A. RTE.	SECTION	COUNTY	TOTAL SHEETS	SHEET NO.
		DRAWN -	REVISED - A. SCHUETZE 07-01-13						**	2025-1078-FCN	*	22	19
		CHECKED -	REVISED - A. SCHUETZE 09-15-06		TC-10				CONTRACT NO. 62Y37				
	PLOT DATE = 11/6/2025	DATE - 06-89	REVISED - D. SENDERAK 05-03-24		SCALE:	SHEET	OF	SHEETS	STA.	TO STA.	ILLINOIS   FED. AID PROJECT		

\*\*VARIOUS \*COOK, DUPAGE, KANE, LAKE, MCHENRY, & WILL

TURN BAY ENTRANCE AT START  
OF LANE CLOSURE TAPER

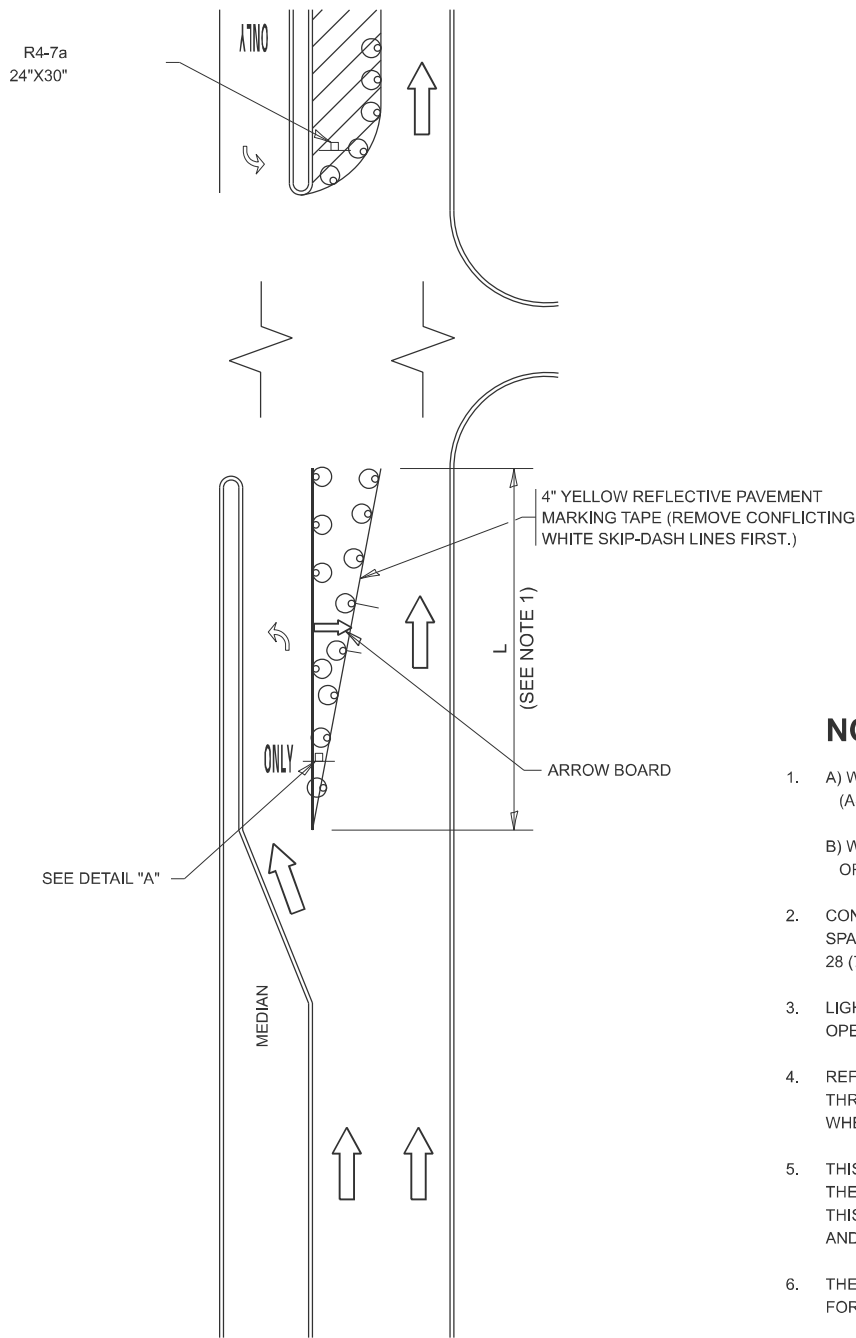


FIGURE 1

LEGEND

- WORK AREA
- LANE OPEN TO TRAFFIC
- ARROW BOARD
- TYPE I OR II BARRICADE OR DRUM WITH STEADY BURN LIGHT
- DRUM WITH STEADY BURN LIGHT
- SIGN ASSEMBLY
- TYPE I OR II CHECK BARRICADE WITH FLASHING LIGHT

NOTES:

- A) WHEN "L" IS  $\leq$  THE STORAGE LENGTH OF THE TURN LANE (AS SHOWN IN FIG. 1), USE FIGURE 1.  
B) WHEN "L" IS  $>$  THE STORAGE LENGTH OF THE TURN LANE OR THE TURN LANE IS WITHIN THE LANE CLOSURE, USE FIGURE 2.
- CONES MAY BE SUBSTITUTED FOR BARRICADES OR DRUMS AT HALF THE SPACING DURING DAY OPERATIONS. CONES SHALL BE A MINIMUM OF 28 (710) IN HEIGHT.
- LIGHTS WILL NOT BE REQUIRED ON BARRICADES OR DRUMS FOR DAY OPERATIONS. ALL LIGHTS SHALL BE MONODIRECTIONAL.
- REFLECTIVE TEMPORARY PAVEMENT MARKINGS SHALL BE PLACED THROUGHOUT THE BARRICADED AREAS OF EACH TURN BAY AS SHOWN WHERE THE CLOSURE TIME IS GREATER THAN FOURTEEN (14) DAYS.
- THIS APPLICATION ALSO APPLIES WHEN WORK IS BEING PERFORMED IN THE RIGHT LANE(S) AND THE RIGHT TURN BAY IS TO REMAIN OPEN. UNDER THIS CONDITION, "RIGHT TURN LANE" R3-I100R 24 x 24 (600 x 600) AND M6-2R 21 x 15 (530 x 380) SHALL BE USED.
- THESE CONTROLS SHALL SUPPLEMENT MAINLINE TRAFFIC CONTROL FOR LANE CLOSURES.
- THE SIGNS SHALL BE MOUNTED ABOVE THE BARRICADES/DRUMS ON SEPARATE SIGN SUPPORTS THAT MEET NCHRP 350 OR MASH REQUIREMENTS.
- TRAFFIC CONTROL AND PROTECTION AT TURN BAYS (TO REMAIN OPEN TO TRAFFIC) SHALL BE INCLUDED IN THE COST OF SPECIFIED TRAFFIC CONTROL STANDARDS OR ITEMS.

TURN BAY ENTRANCE  
WITHIN A LANE CLOSURE

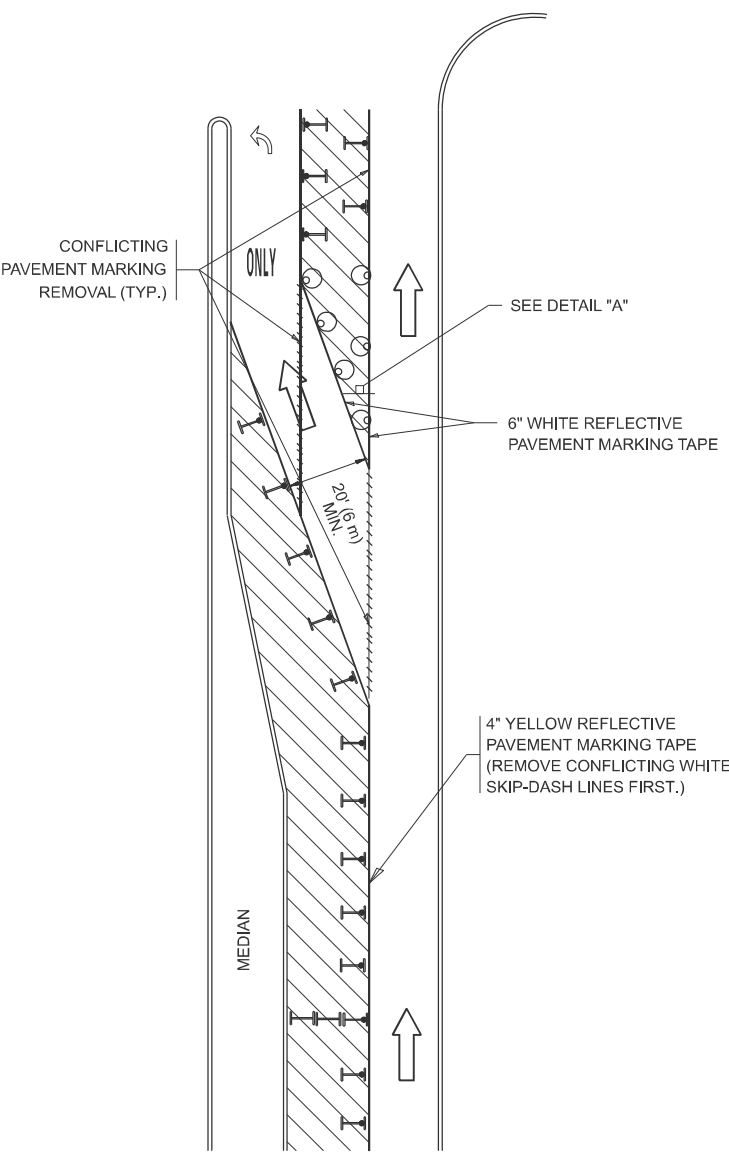
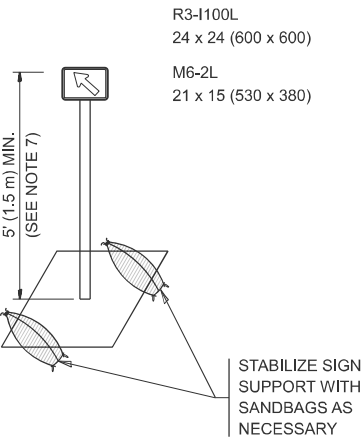


FIGURE 2



DETAIL A

All dimensions are in inches (millimeters) unless otherwise shown.

MODEL: TC-14 [Sheet]  
FILE NAME: c:\p\work\thanh.vo\illinois.gov\117287\0115625-814-Dist\Stds.dgn

USER NAME	= thanh.vo
DESIGNED	- T. RAMMACHER 09-08-94
DRAWN	- A. HOUSEH 11-07-95
CHECKED	- A. HOUSEH 10-12-96
PLOT DATE	= 11/6/2025
DATE	- T. RAMMACHER 01-06-00

REVISED	- R. BORO 09-14-09
REVISED	- A. SCHUETZE 07-01-13
REVISED	- A. SCHUETZE 09-15-16
REVISED	-

STATE OF ILLINOIS  
DEPARTMENT OF TRANSPORTATION

TRAFFIC CONTROL AND PROTECTION AT TURN BAYS  
(TO REMAIN OPEN TO TRAFFIC)

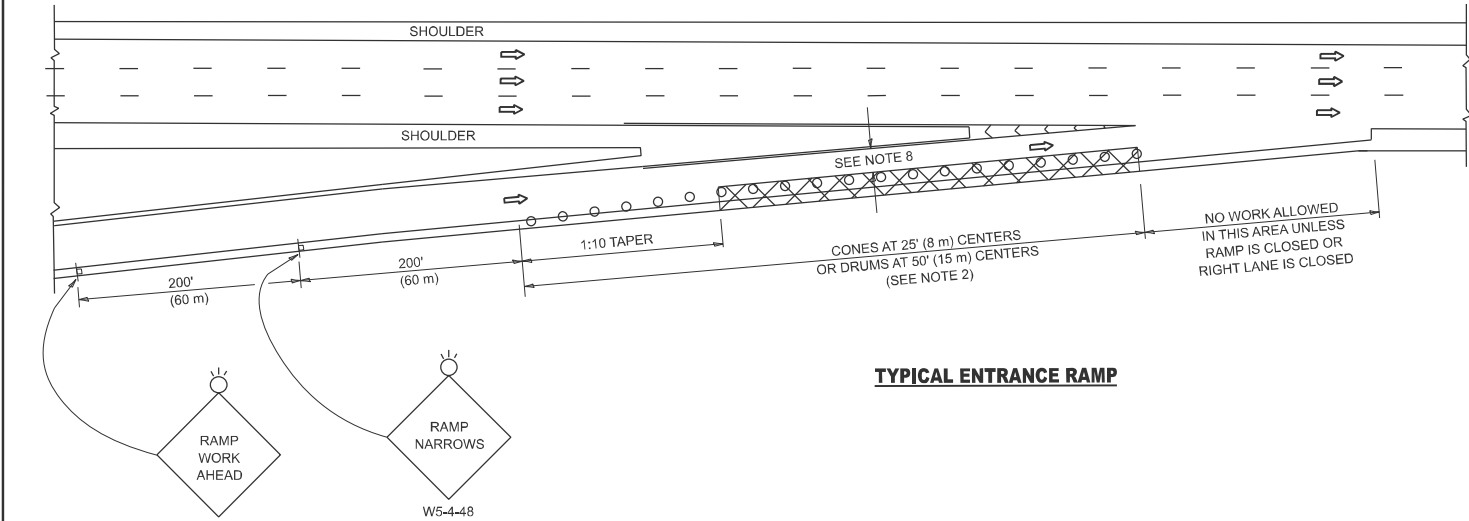
SCALE: NONE SHEET 1 OF 1 SHEETS STA. TO STA.

F.A. RTE.	SECTION	COUNTY	TOTAL SHEETS	SHEET NO.
**	2025-1078-FCN	*	22	20
TC-14		CONTRACT NO. 62Y37		
ILLINOIS		FED. AID PROJECT		

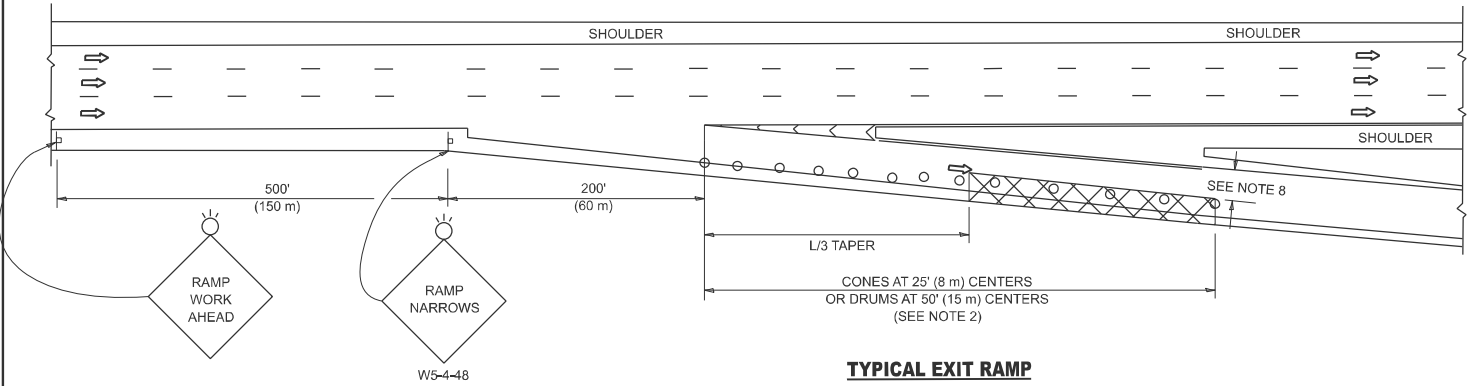
\*\*VARIOUS

\*COOK, DUPAGE, KANE, LAKE, MCHENRY, & WILL

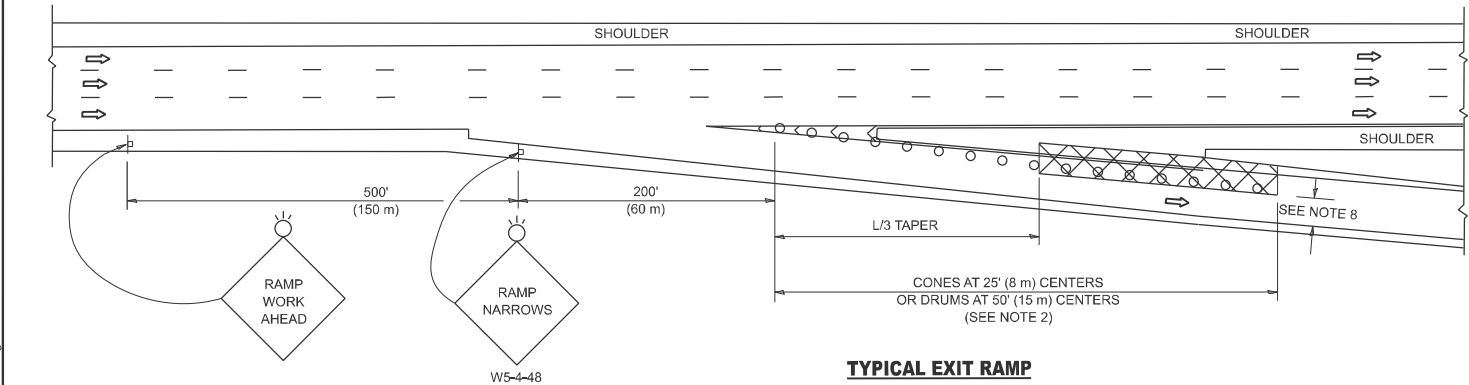
PARTIAL RAMP CLOSURE DETAILS



TYPICAL ENTRANCE RAMP



TYPICAL EXIT RAMP



TYPICAL EXIT RAMP

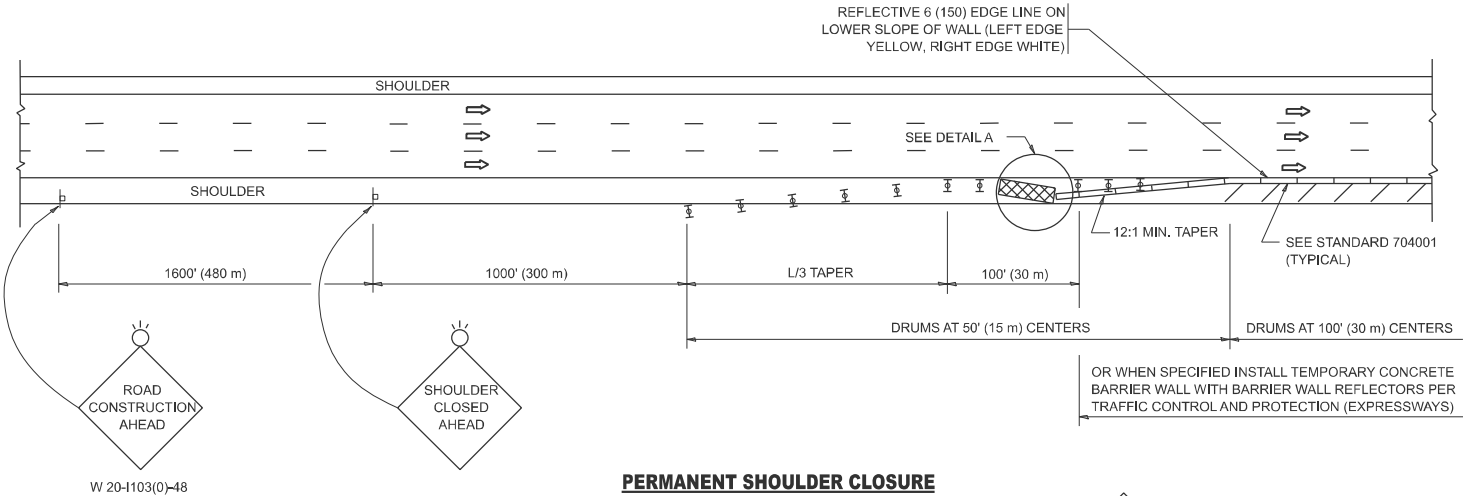
SYMBOLS

- ACTIVE WORK AREA
- SIGN ON PORTABLE OR PERMANENT SUPPORT
- FLAGGER WITH CONTROL SIGN
- TYPE II BARRICADE OR DRUM
- CONE, DRUM OR BARRICADE
- IMPACT ATTENUATOR OF TYPE AND TEST LEVEL SPECIFIED

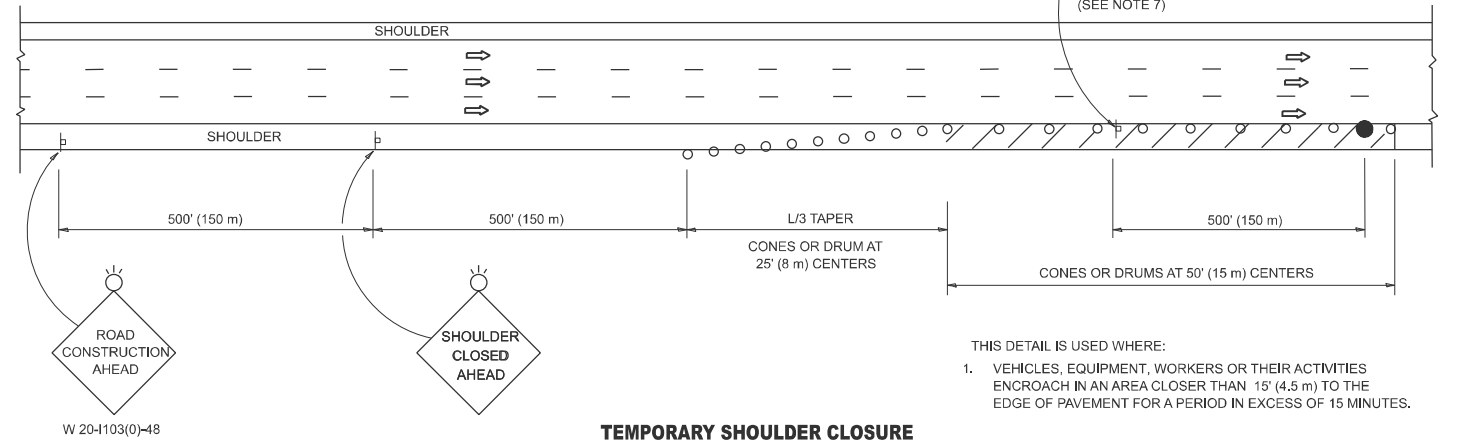
GENERAL NOTES:

- THE "L" DISTANCE EQUALS:  
SPEED LIMIT  
45 mph (80 km/h)  
OR GREATER:  
W = WIDTH OF OFFSET IN FEET (METERS)  
S = NORMAL POSTED SPEED MPH (KM/H)  
FORMULAS  
METRIC  
L=0.65(W)(S)  
ENGLISH  
L=(W)(S)
- TYPE II BARRICADES OR DRUMS ARE REQUIRED FOR ALL NIGHTTIME CLOSURES. TYPE II BARRICADES OR DRUMS WITH MONODIRECTIONAL STEADY BURN LIGHTS ARE REQUIRED FOR DELINEATING OBSTACLES, EXCAVATIONS, OR HAZARDS EXCEEDING 100 FT (30m) IN LENGTH AT NIGHT.
- ALL SIGNS SHALL BE POST MOUNTED IF THE CLOSURE TIME EXCEEDS FOUR DAYS.
- FLASHING LIGHTS SHALL BE USED DURING THE HOURS OF DARKNESS AND SHALL BE INSTALLED ABOVE THE FIRST TWO SETS OF SIGNS.

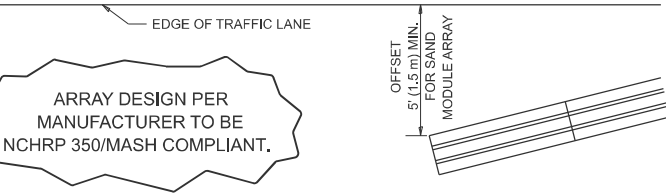
SHOULDER CLOSURE DETAILS



PERMANENT SHOULDER CLOSURE



TEMPORARY SHOULDER CLOSURE



DETAIL "A"  
IMPACT ATTENUATOR, TEMPORARY  
(SEE NOTE 5)

- THE IMPACT ATTENUATOR, TEMPORARY IS NOT REQUIRED WHEN THE TEMPORARY CONCRETE BARRIER WALL IS PROTECTED BY OR IS TIED INTO THE EXISTING GUARDRAIL. IF OFFSET IS LESS THAN 5 FEET USE NARROW USE TYPE DEVICE TO MEET NCHRP350/MASH.
- AUTHORIZATION FROM THE DISTRICT'S BUREAU OF TRAFFIC IS REQUIRED FOR ALL FREEWAY CLOSURES.
- THE FLAGGER AND FLAGGER SIGN ARE REQUIRED AT THE ABOVE WORK SITES WHEN:  
a. FOUR OR MORE WORK VEHICLES ENTER THE TRAFFIC LANES IN A ONE HOUR PERIOD.  
b. THE WORK ACTIVITY REQUIRES FREQUENT ENCR OACHMENT INTO THE LANE OPEN TO TRAFFIC.  
THE FLAGGER SHALL BE STATIONED APPROXIMATELY 100' (30 m) TO 200' (60 m) IN ADVANCE OF THE WORKERS.
- 12' MIN. WIDTH TANGENT SECTION  
16' MIN. WIDTH CURVE SECTION.
- TEMPORARY SHOULDER AND NON-SYSTEM INTERCHANGE PARTIAL RAMP CLOSURES ARE ALLOWED WEEKDAYS BETWEEN 9:00 A.M. AND 3:00 P.M. AND BETWEEN 7:00 P.M. AND 5:00 A.M. OR AS APPROVED BY THE EXPRESSWAY TRAFFIC OPERATIONS ENGINEER. PERMANENT SHOULDER AND PARTIAL RAMP CLOSURES WILL ONLY BE PERMITTED IF CALLED FOR IN THE PLANS OR AS APPROVED BY THE EXPRESSWAY OPERATIONS ENGINEER.

ALL DIMENSIONS ARE IN INCHES (MILLIMETERS) UNLESS OTHERWISE SHOWN.

STATE OF ILLINOIS  
DEPARTMENT OF TRANSPORTATION

TRAFFIC CONTROL DETAILS FOR FREEWAY  
SHOULDER CLOSURES AND PARTIAL RAMP CLOSURES

SCALE: NONE SHEET 1 OF 1 SHEETS STA. TO STA.

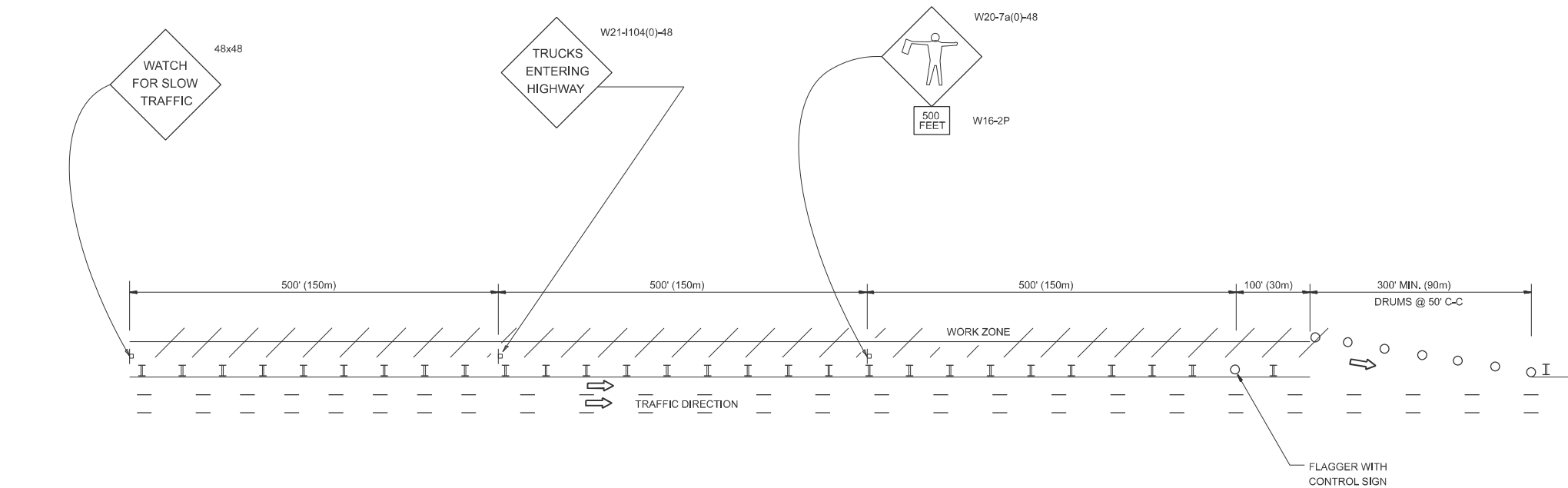
F.A. RTE.	SECTION	COUNTY	TOTAL SHEETS	SHEET NO.
**	2025-1078-FCN	*	22	21
TC-17		CONTRACT NO. 62Y37		

\*\*VARIOUS

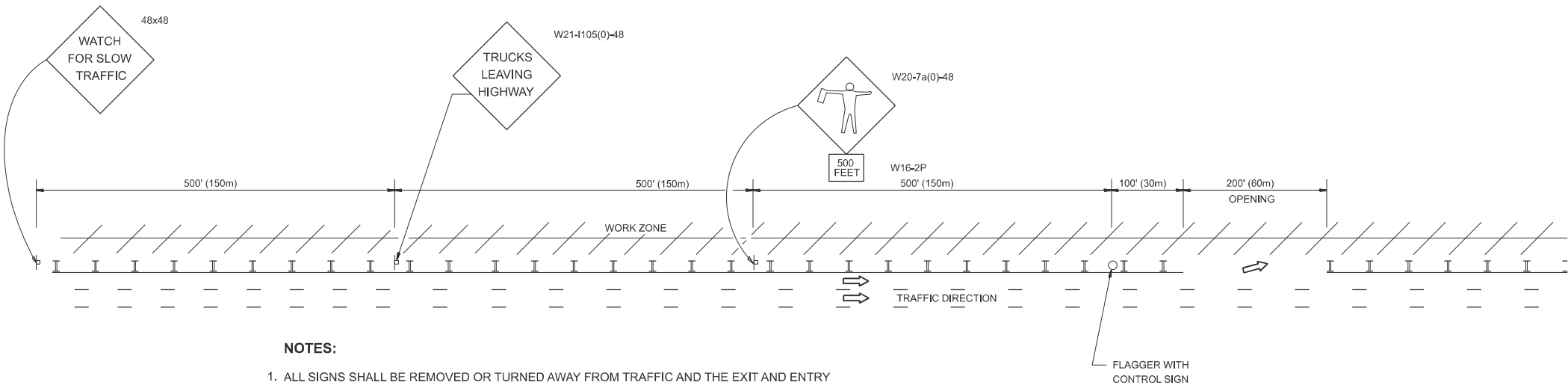
ILLINOIS FED. AID PROJECT  
\*COOK, DUPAGE, KANE, LAKE, MCHENRY, & WILL

SIGNING FOR FLAGGING OPERATIONS AT WORK ZONE OPENINGS

WORK ZONE EXIT OPENING



WORK ZONE ENTRY OPENING



NOTES:

1. ALL SIGNS SHALL BE REMOVED OR TURNED AWAY FROM TRAFFIC AND THE EXIT AND ENTRY OPENINGS SHALL BE CLOSED WHEN THE FLAGGING OPERATION CEASES. NON OPERATING EQUIPMENT SHALL COMPLY WITH ARTICLE 701.11
2. WORK ZONE OPENINGS SHALL BE A MINIMUM OF ONE HALF MILE APART AND A MINIMUM OF ONE QUARTER MILE FROM ALL ENTRANCE AND EXIT RAMPS.
3. EXITING THE WORK ZONE AT ANY PLACE OTHER THAN AT A WORK ZONE EXIT OPENING WILL BE PROHIBITED.
4. ALL VEHICLES SHALL ENTER THE WORK ZONE AT ENTRY OPENINGS, USING THEIR TURN SIGNALS TO WARN MOTORISTS
5. FLAGGERS SHALL NOT STOP TRAFFIC OR DIRECT TRAFFIC INTO AN ADJACENT LANE.

ALL DIMENSIONS ARE IN INCHES (MILLIMETERS)  
UNLESS OTHERWISE SHOWN

MODEL: TC-18 (Sheet)  
FILE NAME: c:\p\work\pwork\thanh.vo@illinois.gov\117287\0115625-81t-Dist\Std.s.dgn

	USER NAME   = thanh.vo	DESIGNED   -	REVISED   -   J.A.F. 02-06	STATE OF ILLINOIS DEPARTMENT OF TRANSPORTATION	FREEWAY / EXPRESSWAY SIGNING FOR FLAGGING OPERATIONS AT WORK ZONE OPENINGS ON FREEWAYS / EXPRESSWAYS			F.A. RTE.	SECTION	COUNTY	TOTAL SHEETS	SHEET NO.	
		DRAWN       -	REVISED   -   S.P.B. 01-07					**	2025-1078-FCN	*	22	22	
		CHECKED   -	REVISED   -   S.P.B. 12-09					TC-18		CONTRACT NO. 62Y37			
	PLOT DATE   = 11/6/2025	DATE        -	REVISED   -   M.D.06-13					SCALE: NONE		SHEET   1	OF   1	SHEETS	STA.
										ILLINOIS		FED. AID PROJECT	