

STATE OF ILLINOIS
DEPARTMENT OF TRANSPORTATION

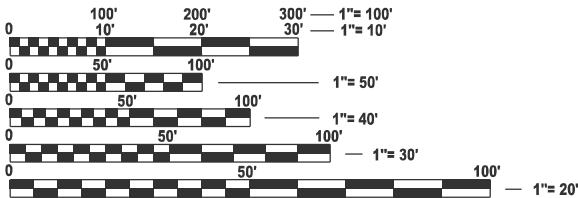
F.A. RTE.	SECTION	COUNTY	TOTAL SHEETS	SHEET NO.
VAR	D6 CABLE/GUARDRAIL 2026	VARIOUS	6	1
		ILLINOIS	CONTRACT NO. 72540	

D-96-008-26

FOR INDEX OF SHEETS, SEE SHEET NO. 2

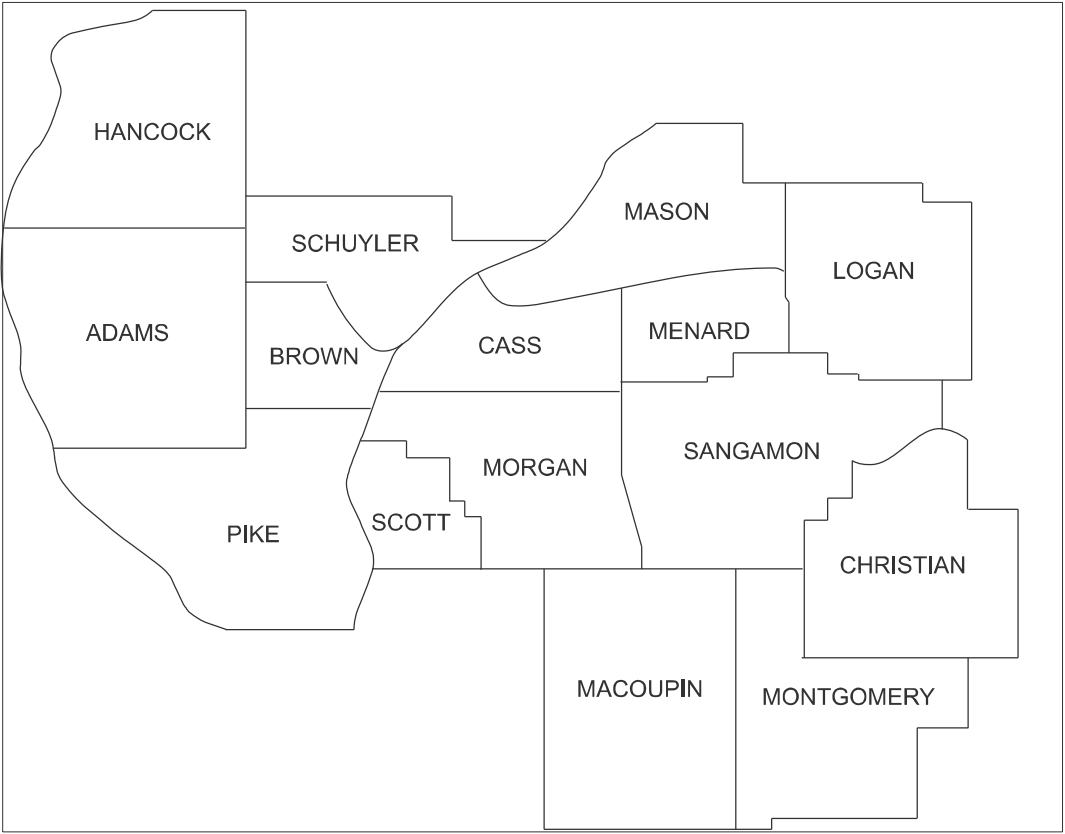
PROPOSED
HIGHWAY PLANS

VARIOUS ROUTES IN D6
SECTION D6 CABLE/GUARDRAIL 2026
GUARDRAIL REPAIR
VARIOUS COUNTIES IN D6
C-96-037-26



FULL SIZE PLANS HAVE BEEN PREPARED USING STANDARD
ENGINEERING SCALES. REDUCED SIZED PLANS WILL NOT
CONFORM TO STANDARD SCALES. IN MAKING MEASUREMENTS
ON REDUCED PLANS, THE ABOVE SCALES MAY BE USED.

J.U.L.I.E.
JOINT UTILITY LOCATION INFORMATION FOR EXCAVATION
1-800-892-0123
OR 811



PROJECT ENGINEER JAY EDWARDS (217) 785-0597
PROJECT MANAGER JONATHAN COX (217) 782-1378

CONTRACT NO. 72540

STATE OF ILLINOIS
DEPARTMENT OF TRANSPORTATION

SUBMITTED December 12, 2025

Teresa C. Price
REGIONAL ENGINEER

January 23, 2026
Scott A. Edwards
ENGINEER OF DESIGN AND ENVIRONMENT

January 23, 2026
Gregory S.
DIRECTOR OF HIGHWAYS PROJECT IMPLEMENTATION

PRINTED BY THE AUTHORITY
OF THE STATE OF ILLINOIS

GENERAL NOTES

- 1
- ALL DISTRIBUTED AREAS CAUSED BY THE CONTRACTOR'S OPERATIONS SHALL BE GRADED AND SEEDED WITH CLASS 2 ROADSIDE MIXTURE AND FERTILIZED AS STATED IN SECTION 250 OF THE STANDARD SPECIFICATIONS. COST SHALL BE CONSIDERED INCLUDED IN THE UNIT COST OF THE WORK BEING PERFORMED.

- 2
- REMOVAL OF DAMAGED IMPACT ATTENUATORS SHALL BE INCLUDED IN THE COST OF THE IMPACT ATTENUATOR BEING INSTALLED.

- 3
- REMOVAL AND DISPOSAL OF DAMAGED FENCE SHALL BE INCLUDED IN THE COST OF THE FENCE BEING INSTALLED.

INDEX OF SHEETS

- 1
- COVER SHEET
- 2
- INDEX OF SHEETS, LISTS OF STANDARDS
GENERAL NOTES AND COMMITMENTS
- 3-5
- SUMMARY OF QUANTITIES (3)
- 6
- CABLE GUARDRAIL MARKER DETAIL

STANDARDS

- 000001-09
- STANDARD SYMBOLS, ABBREVIATIONS, AND PATTERNS
- 001006
- DECIMAL OF AN INCH AND OF A FOOT
- 630001-13
- STEEL PLATE BEAM GUARDRAIL
- 630101-11
- STRONG POST GUARDRAIL ATTACHED TO CULVERT
- 630111-01
- WEAK POST GUARDRAIL ATTACHED TO CULVERT
- 630301-09
- SHOULDER WIDENING FOR TYPE 1 (SPECIAL) GUARDRAIL TERMINALS
- 631011-10
- TRAFFIC BARRIER TERMINAL TYPE 2
- 631031-18
- TRAFFIC BARRIER TERMINAL TYPE 6
- 643001-03
- SAND MODULE IMPACT ATTENUATORS
- 664001-02
- CHAIN LINK FENCE
- 665001-02
- WOVEN WIRE FENCE
- 701001-02
- OFF-ROAD OPERATIONS, 2L, 2W, MORE THAN 15' AWAY
- 701006-05
- OFF ROAD OPERATIONS, 2L, 2W, 15' TO 24" FROM PAVEMENT EDGE
- 701101-05
- OFF ROAD OPERATIONS, MULTILANE, 15' TO 24" FROM PAVEMENT EDGE
- 701106-02
- OFF ROAD OPERATIONS, MULTILANE, MORE THAN 15' AWAY
- 701201-05
- LANE CLOSURE, 2L, 2W, DAY ONLY, FOR SPEEDS > 45 MPH
- 701301-04
- LANE CLOSURE, 2L, 2W, SHORT TIME OPERATIONS
- 701400-12
- APPROACH TO LANE CLOSURE, FREEWAY/EXPRESSWAY
- 701406-13
- LANE CLOSURE, FREEWAY/EXPRESSWAY, DAY OPERATIONS ONLY
- 701411-09
- LANE CLOSURE, MULTILANE, AT ENTRANCE OR EXIT RAMP, FOR SPEEDS > 45 MPH
- 701421-08
- LANE CLOSURE, MULTILANE, DAY OPERATIONS ONLY, FOR SPEEDS > 45 MPH TO 55 MPH
- 701426-09
- LANE CLOSURE, MULTILANE, INTERMITTENT OR MOVING OPERATION, FOR SPEEDS > 45 MPH
- 701427-05
- LANE CLOSURE, MULTILANE, INTERMITTENT OR MOVING OPERATION, FOR SPEEDS < 40 MPH
- 701428-01
- TRAFFIC CONTROL SET UP AND REMOVAL FREEWAY/EXPRESSWAY
- 701456-05
- PARTIAL EXIT RAMP CLOSURE FREEWAY/EXPRESSWAY
- 701501-06
- URBAN LANE CLOSURE, 2L, 2W, UNDIVIDED
- 701502-09
- URBAN LANE CLOSURE, 2L, 2W, WITH BIDIRECTIONAL LEFT TURN LANE
- 701601-09
- URBAN LANE CLOSURE, MULTILANE, 1W OR 2W WITH NONTRAVERSABLE MEDIAN
- 701602-10
- URBAN LANE CLOSURE, MULTILANE, 2W WITH BIDIRECTIONAL LEFT TURN LANE
- 701606-10
- URBAN SINGLE LANE CLOSURE, MULTILANE, 2W WITH MOUNTABLE MEDIAN
- 701701-10
- URBAN LANE CLOSURE, MULTILANE INTERSECTION
- 701901-11
- TRAFFIC CONTROL DEVICES
- 725001-01
- OBJECT AND TERMINAL MARKERS
- 782006-01
- GUARDRAIL AND BARRIER WALL REFLECTOR MOUNTING DETAILS

STATE OF ILLINOIS
DEPARTMENT OF TRANSPORTATION
DIVISION OF HIGHWAYS
DISTRICT 6

EXAMINED December 8, 20 25
Leon C. Pucci
ENGINEER OF OPERATIONS

EXAMINED December 8, 20 25
R. P. Luntz
ENGINEER OF PROJECT IMPLEMENTATION

EXAMINED November 21, 20 25
M. V.
ENGINEER OF PROGRAM DEVELOPMENT

STATE OF ILLINOIS
DEPARTMENT OF TRANSPORTATION

GENERAL NOTES, INDEX OF SHEETS, & HIGHWAY STANDARDS

SCALE: SHEET 1 OF 1 SHEETS STA. TO STA.

F.A. RTE	SECTION	COUNTY	TOTAL SHEETS	SHEET NO.
VAR	D6 CABLE/GUARDRAIL 2026	VARIOUS	6	2
CONTRACT NO. 72540				
ILLINOIS FED. AID PROJECT				

MODEL: Summary of Quantities (Sheet)
FILE NAME: c:\p\p_work\pilot\coj\p\1175866\72540-sh1 SQO.dgn

				0-01895-6001	6-00664-9974
				100% STATE	100% MCHD
CODE NO.	ITEM	UNIT	TOTAL QUANTITY	ROADWAY	ROADWAY
				0021	0021
				RURAL	RURAL
63000001	STEEL PLATE BEAM GUARDRAIL, TYPE A, 6 FOOT POSTS	FOOT	2,800	700	2,100
63000003	STEEL PLATE BEAM GUARDRAIL, TYPE A, 9 FOOT POSTS	FOOT	175	50	125
63000030	STRONG POST GUARDRAIL ATTACHED TO CULVERT	FOOT	50	50	
63100045	TRAFFIC BARRIER TERMINAL, TYPE 2	EACH	12	10	2
63100070	TRAFFIC BARRIER TERMINAL, TYPE 5	EACH	12	10	2
63100085	TRAFFIC BARRIER TERMINAL, TYPE 6	EACH	12	10	2
63100167	TRAFFIC BARRIER TERMINAL, TYPE 1 (SPECIAL) TANGENT	EACH	40	15	25
63100169	TRAFFIC BARRIER TERMINAL, TYPE 1 (SPECIAL) FLARED	EACH	5	5	
63200310	GUARDRAIL REMOVAL	FOOT	3,250	750	2,500
64300450	IMPACT ATTENUATORS (NON-REDIRECTIVE), TEST LEVEL 3	EACH	1	1	
64401300	HIGH TENSION CABLE MEDIAN BARRIER TERMINALS	EACH	2	1	1
66400105	CHAIN LINK FENCE, 4'	FOOT	100	50	50
66500105	WOVEN WIRE FENCE, 4'	FOOT	1,300	300	1,000
67100100	MOBILIZATION	LSUM	1.0	0.5	0.5

	USER NAME = Jonathan.Cox	DESIGNED -	REVISED -	STATE OF ILLINOIS DEPARTMENT OF TRANSPORTATION	SUMMARY OF QUANTITIES				F.A. RTE.	SECTION	COUNTY	TOTAL SHEETS	SHEET NO.
		DRAWN -	REVISED -						VAR	D6 CABLE/GUARDRAIL 2026	VARIOUS	6	3
		CHECKED -	REVISED -						CONTRACT NO. 72540				
	PLOT DATE = 11/5/2025	DATE -	REVISED -		SCALE:	SHEET 1	OF 3	SHEETS	STA.	TO STA.	ILLINOIS FED. AID PROJECT		

MODEL: Summary of Quantities-1 (Sheet)
FILE NAME: c:\p\p_work\pilot\co\p\p\1175866\72540-sht SQQ.dgn

				0-01895-6001	6-00664-9974
				100% STATE	100% MCHD
				ROADWAY	ROADWAY
				0021	0021
				RURAL	RURAL
CODE NO.	ITEM	UNIT	TOTAL QUANTITY		
70100420	TRAFFIC CONTROL AND PROTECTION, STANDARD 701411	EACH	7	6	1
72501000	TERMINAL MARKER - DIRECT APPLIED	EACH	45	25	20
78200005	GUARDRAIL REFLECTORS, TYPE A	EACH	100	50	50
X6300155	STEEL PLATE BEAM GUARDRAIL, ATTACHED TO STRUCTURES (SPECIAL)	FOOT	90	40	50
X6300160	REPAIR STEEL PLATE BEAM GUARDRAIL, TYPE A	FOOT	1,825	1,025	800
X6310302	REPAIR TRAFFIC BARRIER TERMINAL, TYPE 1 SPECIAL (TANGENT)	EACH	95	60	35
X6310304	REPAIR TRAFFIC BARRIER TERMINAL, TYPE 1 SPECIAL (FLARED)	EACH	4	3	1
X6310316	REPAIR TRAFFIC BARRIER TERMINAL, TYPE 2	EACH	6	5	1
X6310326	REPAIR TRAFFIC BARRIER TERMINAL, TYPE 5	EACH	4	3	1
X6310330	REPAIR TRAFFIC BARRIER TERMINAL, TYPE 6	EACH	6	5	1
X6330801	GUARDRAIL POST REPAIR	EACH	50	50	
X6431220	REMOVE AND REPLACE IMPACT ATTENUATOR SAND MODULE	EACH	110	35	75
X6440130	REPAIR HIGH TENSION CABLE (GIBRALTAR)	FOOT	25	10	15
X6440131	REPAIR HIGH TENSION BARRIER TERMINAL (GIBRALTAR)	EACH	10	5	5

	USER NAME = Jonathan.Cox	DESIGNED -	REVISED -	STATE OF ILLINOIS DEPARTMENT OF TRANSPORTATION	SUMMARY OF QUANTITIES				F.A. RTE.	SECTION	COUNTY	TOTAL SHEETS	SHEET NO.
		DRAWN -	REVISED -						VAR	D6 CABLE/GUARDRAIL 2026	VARIOUS	6	4
		CHECKED -	REVISED -		CONTRACT NO. 72540								
	PLOT DATE = 11/5/2025	DATE -	REVISED -		SCALE:	SHEET 2	OF 3	SHEETS	STA.	TO STA.	ILLINOIS FED. AID PROJECT		

MODEL: Summary of Quantities-2 (Sheet)
FILE NAME: c:\p\p_work\pwtol\ccsy\rd1175866\72540-dht SQQ.dgn

Ø 0042

				0-01895-6001	6-00664-9974
				100% STATE	100% MCHD
CODE NO.	ITEM	UNIT	TOTAL QUANTITY	ROADWAY	ROADWAY
				0021	0021
				RURAL	RURAL
X6440133	REPAIR POSTS (GIBALTAR)	EACH	280	30	250
X6440134	REMOVE AND REPLACE POSTS (GIBALTAR)	EACH	240	40	200
X6440140	REPAIR HIGH TENSION CABLE (NU-CABLE)	FOOT	25	10	15
X6440141	REPAIR HIGH TENSION BARRIER TERMINAL (NU-CABLE)	EACH	5	3	2
X6440143	REPAIR POSTS (NU-CABLE)	EACH	25	10	15
X6440144	REMOVE AND REPLACE POSTS (NU-CABLE)	EACH	550	200	350
X7011834	TRAFFIC CONTROL AND PROTECTION, CALL OUT WORK	EACH	115	40	75
X7011836	TRAFFIC CONTROL AND PROTECTION, FREEWAY/EXPRESSWAY, CALL OUT WORK	EACH	95	20	75
X7250002	CABLE GUARD MARKER	EACH	250	150	100
Z0008759	CALL OUT	EACH	66	10	56
Z0008760	EMERGENCY WORK CALL OUT	EACH	60	10	50
Z0076604	TRAINEES TRAINING PROGRAM GRADUATE	HOOR	1000	1000	

REV - MS

	USER NAME = Jonathan.Cox	DESIGNED -	REVISED -	STATE OF ILLINOIS DEPARTMENT OF TRANSPORTATION	SUMMARY OF QUANTITIES				F.A. RTE.	SECTION	COUNTY	TOTAL SHEETS	SHEET NO.
		DRAWN -	REVISED -						VAR	D6 CABLE/GUARDRAIL 2026	VARIOUS	6	5
		CHECKED -	REVISED -						CONTRACT NO. 72540				
	PLOT DATE = 11/5/2025	DATE -	REVISED -		SCALE:	SHEET 3	OF 3	SHEETS	STA.	TO STA.	ILLINOIS FED. AID PROJECT		

