

STATE OF ILLINOIS
DEPARTMENT OF TRANSPORTATION

F.A.I. RTE.	SECTION	COUNTY	TOTAL SHEETS	SHEET NO.
64	82-1RS-2, 82-(1,2)BDR-1	ST CLAIR	27	1
		ILLINOIS	CONTRACT NO. 76U73	

FOR INDEX OF SHEETS, SEE SHEET NO. 2

TRAFFIC DATA:

FUNCTIONAL CLASSIFICATION: INTERSTATE

FAI 64 (I-64)
2023 ADT (ACTUAL): 75,800
2025 ADT (EST.): 76,900
2045 ADT (EST.): 88,400
SU: 3.0%
MU: 10.2%

PROPOSED
HIGHWAY PLANS

FAI ROUTE 64 (I-64)
SECTION 82-1RS-2, 82-(1,2)BDR-1
BRIDGE DECK OVERLAY & REPAIRS
ST CLAIR COUNTY

C-98-137-25

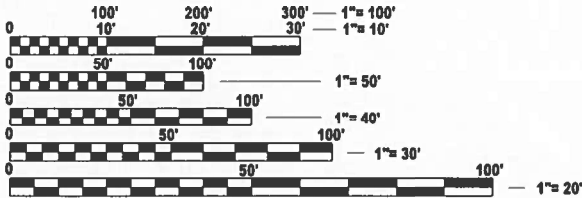
I-64 OVER NS
RAILROAD
S.N. 082-0157

I-64 OVER TRRA
RAILROAD
S.N. 082-0159

I-64 OVER 25TH ST
S.N. 082-0161

I-64 OVER 18TH ST
S.N. 082-0153

I-64 OVER ABANDONED
ROADWAY "C"
S.N. 082-0154



FULL SIZE PLANS HAVE BEEN PREPARED USING STANDARD
ENGINEERING SCALES. REDUCED SIZED PLANS WILL NOT
CONFORM TO STANDARD SCALES. IN MAKING MEASUREMENTS
ON REDUCED PLANS, THE ABOVE SCALES MAY BE USED.

J.U.L.I.E.
JOINT UTILITY LOCATION INFORMATION FOR EXCAVATION
1-800-892-0123
OR 811

PROJECT ENGINEER: BILLIE OWEN, P.E.
PROJECT MANAGER: MIKE BERG, P.E.

CONTRACT NO. 76U73

GROSS LENGTH = 1075.41 FT. = 0.204 MILE
NET LENGTH = 1075.41 FT. = 0.204 MILE



LIN ENGINEERING, LTD.
Consulting Engineers
Westmont, Illinois

STATE OF ILLINOIS
DEPARTMENT OF TRANSPORTATION

SUBMITTED Dec 10 2025

[Signature] REGIONAL ENGINEER

January 23 2026

[Signature] ENGINEER OF DESIGN AND ENVIRONMENT

January 23 2026

[Signature] DIRECTOR OF HIGHWAYS PROJECT IMPLEMENTATION

PRINTED BY THE AUTHORITY
OF THE STATE OF ILLINOIS

INDEX OF SHEETS

1	COVER SHEET
2	INDEX OF SHEETS, HIGHWAY STANDARDS, GENERAL NOTES, & COMMITMENTS
3-4	SUMMARY OF QUANTITIES
5-12	STAGING PLAN
13-15	DETOUR PLAN
16	ROADWAY PLAN
17-27	STRUCTURE PLANS

HIGHWAY STANDARDS

000001-09	STANDARD SYMBOLS, ABBREVIATIONS AND PATTERNS
001006	DECIMAL OF AN INCH AND OF A FOOT
701101-05	OFF-RD OPERATIONS, MULTILANE, 15' TO 24" FROM PAVEMENT EDGE
701106-02	OFF-RD OPERATIONS, MULTILANE, MORE THAN 15' AWAY
701400-12	APPROACH TO LANE CLOSURE FREEWAY EXPRESSWAY
701411-09	LANE CLOSURE MULTILANE ENTRANCE OR EXIT RAMP 45MPH OR MORE
701428-01	TRAFFIC CONTROL SETUP REMOVAL FREEWAY EXPRESSWAY
701446-11	TWO LANE CLOSURE FREEWAY EXPRESSWAY
701451-05	RAMP CLOSURE FREEWAY EXPRESSWAY
701501-06	URBAN LANE CLOSURE, 2L, 2W, UNDIVIDED
701601-09	URBAN LANE CLOSURE, 1W OR 2W WITH NONTRAVERSABLE MEDIAN
701701-10	URBAN LANE CLOSURE INTERSECTION
701801-06	SIDEWALK, CORNER OR CROSSWALK CLOSURE
701901-11	TRAFFIC CONTROL DEVICES

GENERAL NOTES

1. UTILITIES KNOWN TO HAVE FACILITIES WITHIN THE PROJECT AREA:

-AMEREN ILLINOIS (GAS & ELECTRIC)

-AT&T ILLINOIS (COMMUNICATIONS)

-CHARTER COMMUNICATIONS, INC. (CABLE TV)

-CLEARWAVE FIBER LLC (COMMUNICATIONS)

-CITY OF EAST ST. LOUIS (SANITARY SEWER)

-ILLINOIS AMERICAN WATER COMPANY (WATER)
2. NO SURVEY WAS PERFORMED FOR THIS PROJECT AND THE PLANS WERE CREATED USING MICROFILM AND FIELD MEASUREMENTS.
3. THE RESIDENT ENGINEER SHALL VERIFY THE EXISTENCE OF HIGHWAY LIGHTING AND/OR INTELLIGENT TRANSPORTATION SYSTEMS (I.T.S) UTILITIES WITHIN THE PROJECT LIMITS. IF HIGHWAY LIGHTING AND/OR I.T.S EXISTS WITHIN THE PROJECT LIMITS, AND IF THESE ITEMS REQUIRE LOCATING, THE CONTRACTOR SHALL BE DIRECTED TO DO SO ACCORDING TO SECTION 803 OF THE STANDARD SPECIFICATIONS. THIS WORK SHALL BE PAID FOR ACCORDING TO ARTICLE 109.04 OF THE STANDARD SPECIFICATIONS.
4. CHANGEABLE MESSAGE SIGNS SHALL BE REQUIRED FOR THIS PROJECT. THEY SHALL BE PLACED 2 WEEKS PRIOR TO ANY LANE OR ON RAMP CLOSURES AND SHALL REMAIN UP FOR THE DURATION OF THE PROJECT. THE CHANGEABLE MESSAGE SIGNS SHALL BE PLACED ALONG NB KINGSHIGHWAY SOUTH OF I-64, SB KINGSHIGHWAY NORTH OF I-64, AND WB I-64 WEST OF KINGSHIGHWAY OR AT THE DIRECTION OF THE ENGINEER, AN ADDITIONAL SIGN WILL BE REQUIRED ALONG WB I-64 FOR THE WB I-64 TO 18TH STREET RAMP CLOSURE. ADDITIONAL CHANGEABLE MESSAGE SIGNS, AS SHOWN ON THE STAGE 1 DETOUR PLANS, WILL BE REQUIRED DURING STAGE 1 WHEN SN 082-0153 IS CLOSED AND WB I-64 TRAFFIC IS DETOURED. THE CHANGEABLE MESSAGE SIGNS REQUIRED TWO WEEKS PRIOR TO ANY LANE OR ON RAMP CLOSURES SHALL BE PAID FOR SEPARATELY. THE CHANGEABLE MESSAGE SIGNS REQUIRED FOR THE DURATION OF THE PROJECT SHALL NOT BE PAID FOR SEPARATELY BUT SHALL BE INCLUDED IN THE COST TRAFFIC CONTROL AND PROTECTION, (SPECIAL) AND NO ADDITIONAL COMPENSATION WILL BE ALLOWED.
5. THE DEPARTMENT STRONGLY ENCOURAGES THE PRIME CONTRACTOR AND THEIR APPROVED SUB-CONTRACTORS TO HIRE MINORITY, WOMEN, AND DISADVANTAGED INDIVIDUALS FROM ITS FEDERALLY FUNDED HIGHWAY CONSTRUCTION CAREERS TRAINING PROGRAM (HCCTP) TO HELP MEET WORKFORCE AND TRAINEE GOALS. THIS PROGRAM IS TRAINING MINORITIES, WOMEN, AND DISADVANTAGED INDIVIDUALS IN HIGHWAY CONSTRUCTION-RELATED SKILLS, E.G., MATH FOR THE TRADES, JOB READINESS, TECHNICAL SKILLS COURSEWORK (CARPENTRY, CONCRETE FLATWORK, BLUEPRINT READING, SITE WORK, TOOLS USE, ETC.) AND OSHA 10 HOUR CERTIFICATION, TO PREPARE THEM FOR A CAREER IN THE HIGHWAY CONSTRUCTION TRADES. GRADUATES ARE WELL-TRAINED AND READY TO BECOME PRODUCTIVE ENTRY-LEVEL CONSTRUCTION WORKERS. CONTACT THE DISTRICT 8 EEO OFFICE AT 618-346-3360 AND/OR THE HCCTP COORDINATOR AT 618-874-6528 TO LEARN MORE ABOUT THE PROGRAM AND FOR ASSISTANCE IN MEETING WORKFORCE AND TRAINEE GOALS.
6. ALL TURF AREAS DISTURBED BY THE CONTRACTOR SHALL BE SEEDED WITH THE APPROPRIATE EROSION CONTROL, AS DIRECTED BY THE ENGINEER, AT THE CONTRACTOR'S EXPENSE.

COMMITMENTS

NONE

MODEL: Index [Sheet]
FILE NAME: E:\2021-8\CADD_Sheets\08\6\U73-sh1-index.dgn

<div><div></div><div>LIN ENGINEERING,LTD. Consulting Engineers Westmont, Illinois</div></div>	USER NAME = rober	DESIGNED - CB	REVISED -	STATE OF ILLINOIS DEPARTMENT OF TRANSPORTATION	F.A.I. ROUTE 64 OVER SN 082-0153, -0154, -0157, -0159 & -0161 INDEX OF SHEETS, HIGHWAY STANDARDS, GENERAL NOTES, & COMMITMENTS	F.A.I. RTE.	SECTION	COUNTY	TOTAL SHEETS	SHEET NO.
		DRAWN - CB	REVISED -			64	82-1RS-2, 82-(1,2)BDR-1	ST CLAIR	27	2
	PLOT SCALE = 0.16666633 ' / in.	CHECKED - RC	REVISED -			CONTRACT NO. 76U73				
	PLOT DATE = 11/26/2025	DATE - 12/2025	REVISED -			ILLINOIS FED. AID PROJECT				
SCALE:		SHEET 1 OF 1 SHEETS		STA.		TO STA.				

MODEL - Summary of Quantities [Sheet]
FILE NAME: E:\2021-8ICADD_Sheets\0816\73-shr-SOQ.dgn

100% STATE				CONSTRUCTION CODE					
				BRIDGE	BRIDGE	BRIDGE	BRIDGE	BRIDGE	BRIDGE
CODE NO.	ITEM	UNIT	TOTAL QUANTITY	0059	0047	0047	0047	0047	0047
				S.N. 082-0153	S.N. 082-0153	S.N. 082-0154	S.N. 082-0157	S.N. 082-0159	S.N. 082-0161
28100707	STONE DUMPED RIPRAP, CLASS A4	SQ YD	45				45		
50104650	SLOPE WALL REMOVAL	SQ YD	45				45		
50157300	PROTECTIVE SHIELD	SQ YD	1036		363		194		479
50300260	BRIDGE DECK GROOVING	SQ YD	787	787					
50300300	PROTECTIVE COAT	SQ YD	1565	817		198	138	193	219
53016000	DECK SLAB REPAIR (PARTIAL)	SQ YD	693			191	136	164	202
53016002	DECK SLAB REPAIR (FULL DEPTH, TYPE II)	SQ YD	57		2	7	2	29	17
53101007	BRIDGE DECK SCARIFICATION 2"	SQ YD	817	817					
53101607	BRIDGE DECK MICROSILICA CONCRETE OVERLAY 2"	SQ YD	817	817					
67000400	ENGINEER'S FIELD OFFICE, TYPE A	CAL MO	3	3					
67100100	MOBILIZATION	L SUM	1	0.1	0.1	0.2	0.2	0.2	0.2
70107025	CHANGEABLE MESSAGE SIGN	CAL DA	360	200	160				
70200100	NIGHTTIME WORK ZONE LIGHTING	L SUM	1	0.1	0.1	0.2	0.2	0.2	0.2
* 78003131	PREFORMED PLASTIC PAVEMENT MARKING, TYPE B - STANDARD - LINE 6"	FOOT	347	347					

*

SPECIALTY ITEM

REV - MS

<div><div></div><div>LIN ENGINEERING,LTD.</div><div>Consulting Engineers</div><div>Westmont, Illinois</div></div>	USER NAME = jkehn	DESIGNED - CB	REVISED -	STATE OF ILLINOIS DEPARTMENT OF TRANSPORTATION	F.A.I. ROUTE 64 OVER SN 082-0153, -0154, -0157, -0159 & -0161 SUMMARY OF QUANTITIES			F.A.I. RTE.	SECTION	COUNTY	TOTAL SHEETS	SHEET NO.
		DRAWN - CB	REVISED -					64	82-1RS-2, 82-(1,2)BDR-1	ST CLAIR	27	3
	PLOT SCALE = 0.16666633' / in.	CHECKED - RC	REVISED -					CONTRACT NO. 76U73				
	PLOT DATE = 12/2/2025	DATE - 12/2025	REVISED -									
	SCALE:		SHEET 1		OF 2	SHEETS	STA.	TO STA.		ILLINOIS FED. AID PROJECT		

MODEL: Summary of Quantities-1 (Sheet)
FILE NAME: E:\2021-6CAD_D_Sheets\0876\73-shit-SOO.dgn

LIN ENGINEERING,LTD.

Consulting Engineers

Westmont, Illinois

USER NAME = jkehn	DESIGNED - CB	REVISED -
DRAWN - CB	REVISED -	
PLOT SCALE = 0.16666633 ' / in.	CHECKED - RC	REVISED -
PLOT DATE = 12/1/2025	DATE - 12/2025	REVISED -

STATE OF ILLINOIS
DEPARTMENT OF TRANSPORTATION

F.A.I. ROUTE 64 OVER SN 082-0153, -0154, -0157, -0159 & -0161
SUMMARY OF QUANTITIES

SCALE: SHEET 2 OF 2 SHEETS STA. TO STA.

F.A.I. RTE.	SECTION	COUNTY	TOTAL SHEETS	SHEET NO.
64	82-1RS-2, 82-(1,2)BDR-1	ST CLAIR	27	4
CONTRACT NO. 76U73				
ILLINOIS FED. AID PROJECT				

*

REV - MS

- LEGEND
- 1

ADVANCED CONSTRUCTION ZONE SPEED LIMIT SIGNS AND SPEED LIMIT SIGNS SHALL BE PLACED AFTER THIS POINT (ALONG KINGSHIGHWAY ENTRANCE RAMP(S)).
- 2

ADVANCED CONSTRUCTION ZONE SPEED LIMIT SIGNS AND SPEED LIMIT SIGNS SHALL BE PLACED BEFORE THIS POINT (BEFORE I-64 ENTRANCES).
- 3

CHANGEABLE MESSAGE SIGN (CMS) LOCATIONS:
3A - NB KINGSHIGHWAY SOUTH OF I-64
3B - SB KINGSHIGHWAY NORTH OF I-64
3C - WB I-64 WEST OF KINGSHIGHWAY

NOTES

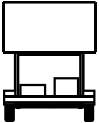
STAGING - TRAFFIC CONTROL NOTES

1. SEE THE SPECIAL PROVISIONS FOR PEAK HOUR RESTRICTIONS AND ADDITIONAL TRAFFIC CONTROL INFORMATION
2. REFLECTORIZED TEMPORARY PAVEMENT MARKING WILL NOT BE REQUIRED.
3. WORK ZONE SPEED SIGNS MAY BE MOVED TO LOCATIONS APPROVED BY THE ENGINEER WHEN THE MINIMUM SPACING CANNOT BE PROVIDED BETWEEN THE SIGNS AND THE WORKERS IN EACH SEPERATE WORK ACTIVITY.
4. BARRICADES SHALL BE PLACED AT 25FT SPACING WHEN THE TAPER AND TANGENT LENGTHS SHOWN IN THE HIGHWAY STANDARD 701446 ARE NOT MET.
5. A SPOTTER SHALL BE REQUIRED AS SHOWN IN HIGHWAY STANDARD 701446.
6. THE CHANGEABLE MESSAGE SIGNS (CMS) FOR HIGHWAY STANDARD 701400 SHALL BE PLACED AT THE LOCATION SHOWN IN PLANS OR AS DIRECTED BY THE ENGINEER. THE ADDITIONAL SIGNS BETWEEN THE CMS AND THE START OF THE LANE CLOSURE SHALL BE PLACED PROPORTIONAL TO THE SPACING SHOWN IN THE STANDARD.
7. A CHECK BARRICADE SHALL BE PLACED IN THE MIDDLE OF THE CLOSED LANE(S) AT 1000' CENTERS.

STANDARD 701400 NOTES:

1. ADVANCED CONSTRUCTION ZONE SPEED LIMIT SIGNS AND SPEED LIMITS SIGNS SHALL BE PLACED ALONG THE KINGSHIGHWAY ENTRANCE RAMP(S) AFTER THE EXIT FROM KINGSHIGHWAY AND BEFORE THE ENTRANCE ONTO I-64.
2. CHANGEABLE MESSAGE SIGN (CMS) SHALL BE PROVIDED AT THE FOLLOWING LOCATIONS FOR STANDARD 701400. EXACT LOCATIONS TO BE DETERMINED BY THE ENGINEER:

3A - NB KINGSHIGHWAY SOUTH OF I-64
3B - SB KINGSHIGHWAY NORTH OF I-64
3C - WB I-64 WEST OF KINGSHIGHWAY
3. SEE SUGGESTED STAGES OF CONSTRUCTION SHEETS FOR ADDITIONAL INFORMATION.



MODEL: 701400 Detail [Sheet]
FILE NAME: E:\2024\8\CADD_Sheets\08\6\U73-sh-t-MOT-details.dgn

LIN ENGINEERING,LTD.
Consulting Engineers
Westmont, Illinois

USER NAME	= jkehrn	DESIGNED -	CB	REVISED -	
DRAWN	- CB	REVISED -			
PLOT SCALE	= 0.16666633''/in.	CHECKED -	RC	REVISED -	
PLOT DATE	= 12/1/2025	DATE	= 12/2025	REVISED -	

STATE OF ILLINOIS
DEPARTMENT OF TRANSPORTATION

F.A.I. ROUTE 64 OVER SN 082-0153, -0154, -0157, -0159 & -0161
STAGING NOTES

SCALE: 1"=300' SHEET 1 OF 8 SHEETS STA. TO STA.

F.A.I. RTE.	SECTION	COUNTY	TOTAL SHEETS	SHEET NO.
64	82-1RS-2, 82-(1,2)BDR-1	ST CLAIR	27	5
CONTRACT NO. 76U73				
ILLINOIS FED. AID PROJECT				



MODEL: Stage 1B-1 [Sheet]
FILE NAME: E:\2021-8\CADD_Sheets\0876\U73-sh-ht-MOT-stage-2.dgn

LIN ENGINEERING, LTD.
Consulting Engineers
Westmont, Illinois

USER NAME = jkehn	DESIGNED - CB	REVISED -
	DRAWN - CB	REVISED -
PLOT SCALE = 0.16666667" / in.	CHECKED - RC	REVISED -
PLOT DATE = 12/2/2025	DATE - 12/2/2025	REVISED -

STATE OF ILLINOIS
DEPARTMENT OF TRANSPORTATION

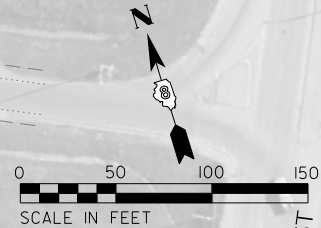
F.A.I. ROUTE 64 OVER SN 082-0153, -0154, -0157, -0159 & -0161
STAGING PLAN: STAGE 2

SCALE: 1"=50' SHEET 2 OF 8 SHEETS STA. 1301+89.00 TO STA. 1319+00.00

F.A.I. RTE.	SECTION	COUNTY	TOTAL SHEETS	SHEET NO.
64	82-1RS-2, 82-(1,2)BDR-1	ST CLAIR	27	6
CONTRACT NO. 76U73				
ILLINOIS FED. AID PROJECT				

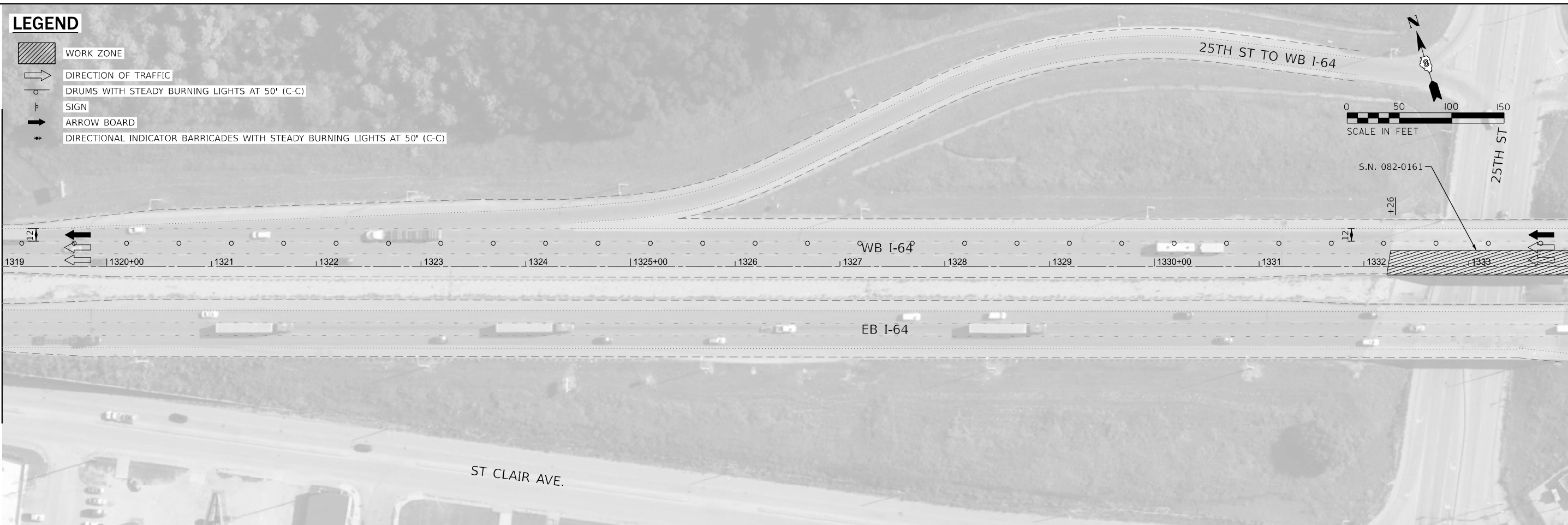
LEGEND

- WORK ZONE
- DIRECTION OF TRAFFIC
- DRUMS WITH STEADY BURNING LIGHTS AT 50' (C-C)
- SIGN
- ARROW BOARD
- DIRECTIONAL INDICATOR BARRICADES WITH STEADY BURNING LIGHTS AT 50' (C-C)



MATCHLINE STA. 1319+00.00

MATCHLINE STA. 1334+00.00



- LEGEND
- CLOSED LANE
 - OPEN LANE

MODEL: Stage 1B-2 [Sheet]
FILE NAME: E:\2024\SCADD_Sheets\0876\U73-sh-MOT-stage-2.dgn

LIN ENGINEERING,LTD.

Consulting Engineers

Westmont, Illinois

USER NAME = jkehn

PLOT SCALE = 0.16666667" / in.

PLOT DATE = 12/2/2025

DESIGNED - CB

DRAWN - CB

CHECKED - RC

DATE - 12/2/2025

REVISED -

REVISED -

REVISED -

REVISED -

STATE OF ILLINOIS

DEPARTMENT OF TRANSPORTATION

F.A.I. ROUTE 64 OVER SN 082-0153, -0154, -0157, -0159 & -0161

STAGING PLAN: STAGE 2

SCALE: 1"=50'

SHEET 3 OF 8 SHEETS

STA. 1319+00.00 TO STA. 1349+00.00

F.A.I. RTE.

SECTION

COUNTY

TOTAL SHEETS

SHEET NO.

64

82-1RS-2, 82-(1,2)BDR-1

ST CLAIR

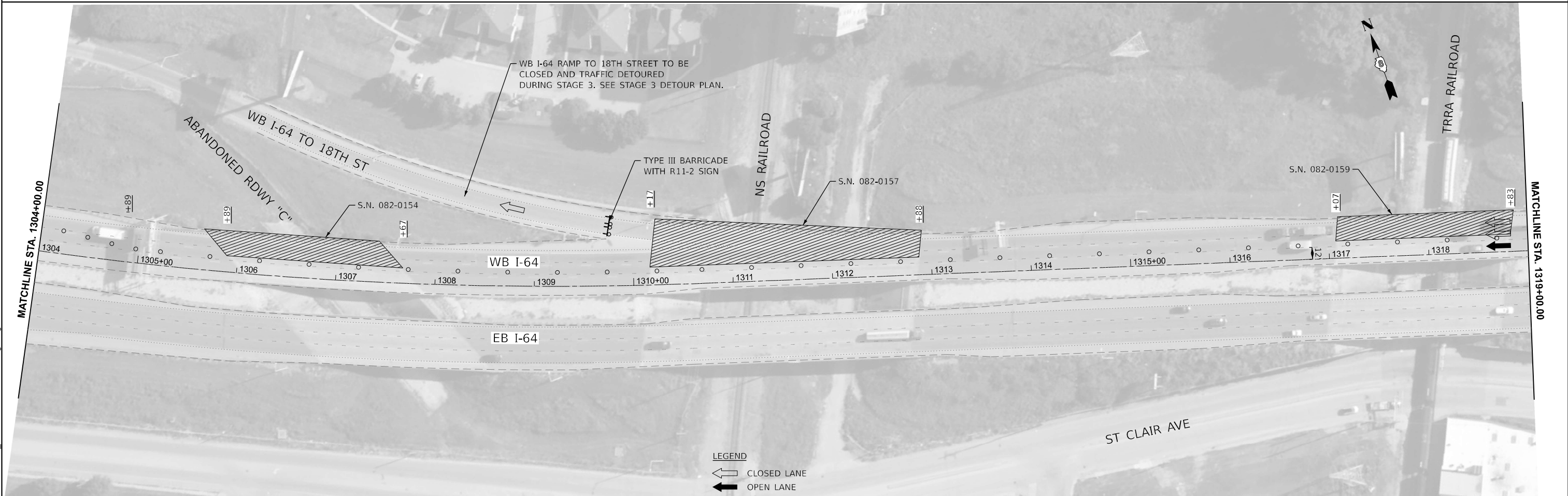
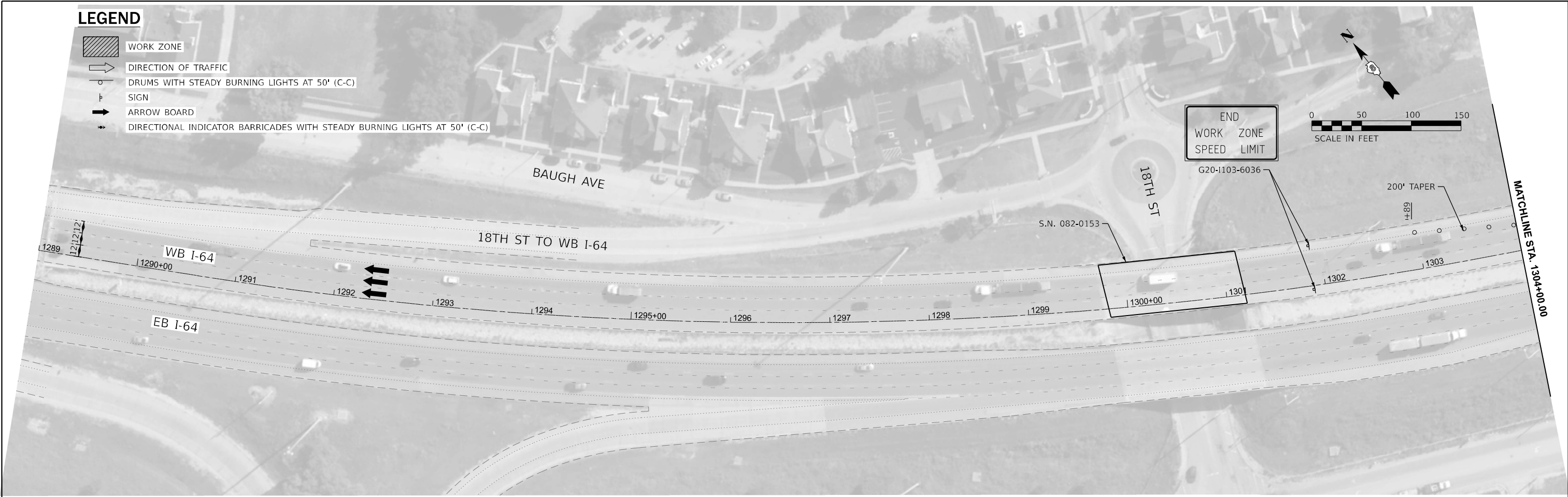
27

7

ILLINOIS

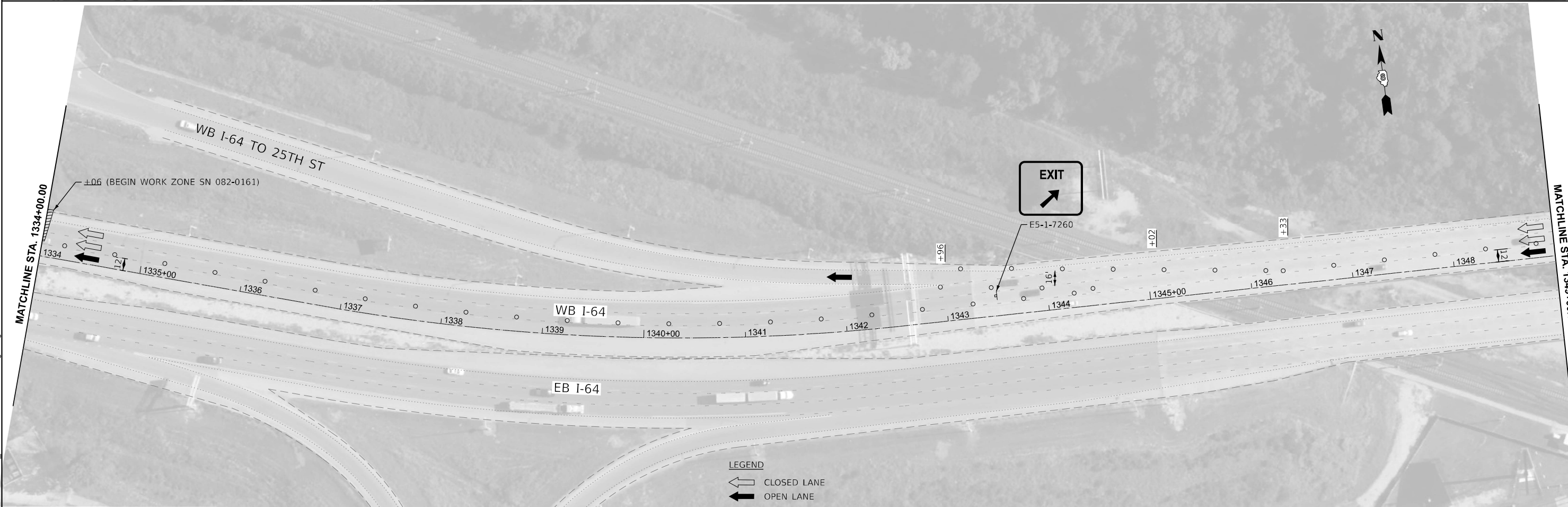
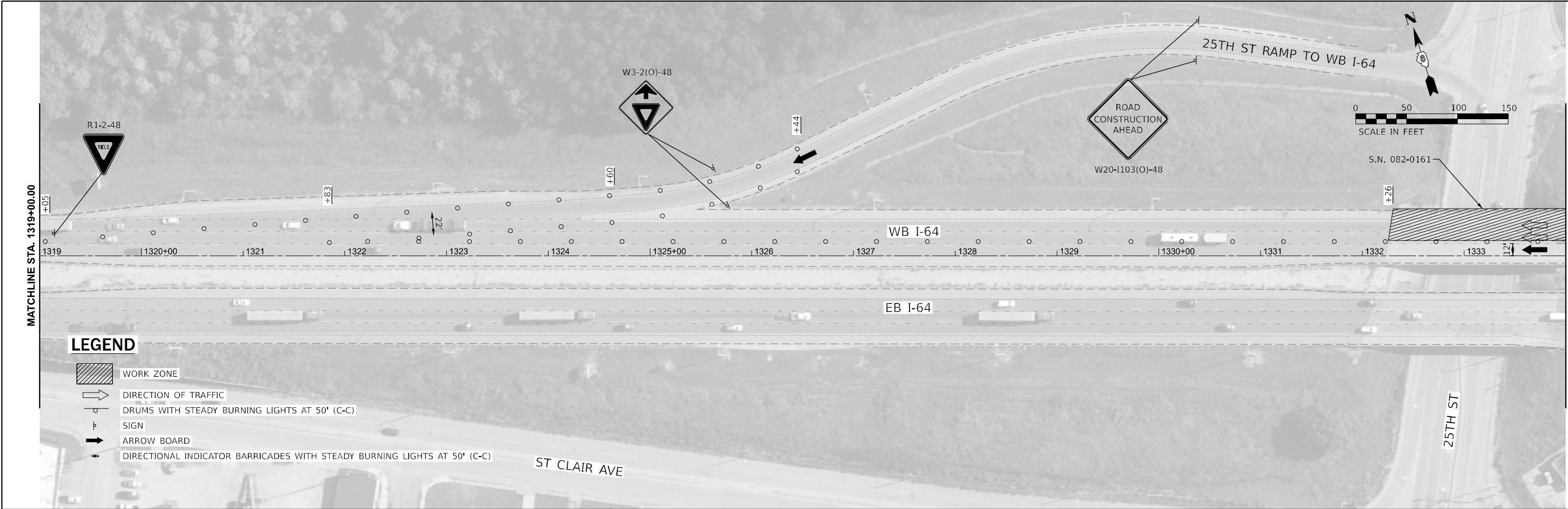
FED. AID PROJECT

CONTRACT NO. 76U73



MODEL: Stage 3B - 1 [Sheet]
FILE NAME: E:\2021-8\CADD_Sheets\08176\73-shi-MOT-stage-3.dgn

<div><div></div><div>LIN ENGINEERING,LTD.</div><div>Consulting Engineers</div><div>Westmont, Illinois</div></div>	USER NAME = jkehn	DESIGNED - CB	REVISED -	STATE OF ILLINOIS DEPARTMENT OF TRANSPORTATION	F.A.I. ROUTE 64 OVER SN 082-0153, -0154, -0157, -0159 & -0161				F.A.I. RTE.	SECTION	COUNTY	TOTAL SHEETS	SHEET NO.
	PLOT SCALE = 0.16666667" / in.	DRAWN - CB	REVISED -		STAGING PLAN: STAGE 3				64	82-1RS-2, 82-(1,2)BDR-1	ST CLAIR	27	9
	PLOT DATE = 12/2/2025	CHECKED - RC	REVISED -						CONTRACT NO. 76U73				
		DATE - 12/2/2025	REVISED -						ILLINOIS FED. AID PROJECT				
	SCALE: 1"=50'		SHEET 5	OF 8 SHEETS	STA. 1301+89.00	TO STA. 1319+00.00							



MODEL: Stage 3B-2 [Sheet]
FILE NAME: E:\2021\SCADD_Sheets\0876\73-sh-MOT-stage-3.dgn

Lin Engineering, Ltd.

Consulting Engineers

Westmont, Illinois

USER NAME	= jkehn	DESIGNED	- CB	REVISED	-
DRAWN	- CB	REVISIONS	-	REVISIONS	-
PLOT SCALE	= 0.16666667" / in.	CHECKED	- RC	REVISIONS	-
PLOT DATE	= 12/2/2025	DATE	- 12/2/2025	REVISIONS	-

STATE OF ILLINOIS

DEPARTMENT OF TRANSPORTATION

F.A.I. ROUTE 64 OVER SN 082-0153, -0154, -0157, -0159 & -0161

STAGING PLAN: STAGE 3

SCALE: 1"=50'

SHEET 6

OF 8 SHEETS

STA. 1319+00.00

TO STA. 1349+00.00

F.A.I. RTE.	SECTION	COUNTY	TOTAL SHEETS	SHEET NO.
64	82-1RS-2, 82-(1,2)BDR-1	ST CLAIR	27	10
CONTRACT NO. 76U73				
ILLINOIS FED. AID PROJECT				



MODEL: Stage 3B - 3 [Sheet]
FILE NAME: E:\2022\HSCADD_Sheets\0876\U73-sh-HOT-stage-3.dgn



LIN ENGINEERING,LTD.

Consulting Engineers

Westmont, Illinois

USER NAME = jkehr	DESIGNED - CB	REVISED -
	DRAWN - CB	REVISED -
	CHECKED - RC	REVISED -
	DATE - 12/2/2025	REVISED -
PLOT SCALE = 0.16666667" / in.		
PLOT DATE = 12/2/2025		

STATE OF ILLINOIS

DEPARTMENT OF TRANSPORTATION

F.A.I. ROUTE 64 OVER SN 082-0153, -0154, -0157, -0159 & -0161

STAGING PLAN: STAGE 3

SCALE: 1"=50'

SHEET 7 OF 8 SHEETS

STA. 1349+00.00 TO STA. 1379+00.00

F.A.I. RTE.	SECTION	COUNTY	TOTAL SHEETS	SHEET NO.
64	82-1RS-2, 82-(1,2)BDR-1	ST CLAIR	27	11
CONTRACT NO. 76U73				
ILLINOIS FED. AID PROJECT				

MODEL: Stage 3B-4 [Sheet]
FILE NAME: E:\2021-8\CADD_Sheets\08173-sh-1-MOT-stage-3.dgn



<div><div><div></div></div><div>LIN ENGINEERING, LTD.</div><div>Consulting Engineers</div><div>Westmont, Illinois</div></div>	USER NAME = jkehn	DESIGNED - CB	REVISED -	STATE OF ILLINOIS DEPARTMENT OF TRANSPORTATION	F.A.I. ROUTE 64 OVER SN 082-0153, -0154, -0157, -0159 & -0161 STAGING PLAN: STAGE 3				F.A.I. RTE.	SECTION	COUNTY	TOTAL SHEETS	SHEET NO.
	PLOT SCALE = 0.16666667" / in.	DRAWN - CB	REVISED -						64	82-1RS-2, 82-(1,2)BDR-1	ST CLAIR	27	12
	PLOT DATE = 12/2/2025	CHECKED - RC	REVISED -						CONTRACT NO. 76U73				
		DATE - 12/2025	REVISED -						ILLINOIS FED. AID PROJECT				
	SCALE: 1"=50'		SHEET 8	OF 8 SHEETS	STA. 1379+00.00	TO STA. 1381+33.00							

- NOTES:
- ENGINEER WILL CONFIRM THE MESSAGES AND THE LOCATIONS OF THE PORTABLE CHANGEABLE MESSAGE SIGNS AS WELL AS THE DETOUR SIGN ASSEMBLIES.
 - CONTRACTOR SHALL PLACE "ROAD CLOSED" PLAQUE OVER ALL EXISTING ADVANCED SIGNAGE FOR WB I-64.
 - CHANGEABLE MESSAGE SIGNS TO BE PLACED 14 DAYS PRIOR TO CLOSURE.
 - THE WB I-64 DETOUR WILL BE IN PLACE FOR THE DURATION OF STAGE 1.

PCMS MESSAGE BEFORE CLOSURE

PHASE 1

WB I-64
CLOSED
AT 18TH ST

PHASE 2

FROM
XX-XX-XX

PCMS MESSAGE AFTER START
OF CLOSURE

PHASE 1

WB I-64
CLOSED
AT 18TH ST

PHASE 2

FOLLOW
DETOUR

SIGNING LEGEND

- | | | | | | |
|----|--|-------------------------------------|----|--|-------------|
| 1 | | M4-8 36X18 | 9 | | W20-2-4848 |
| 2 | | M1-1 36X36 | 10 | | M4-8a 30X15 |
| 3 | | PORTABLE CHANGEABLE
MESSAGE SIGN | 11 | | W20-3-4848 |
| 4 | | M6-3 (3021) | 12 | | M3-4 36X18 |
| 5 | | M6-2L (3021) | | | |
| 5A | | M5-2L (3021) | | | |
| 6 | | M6-2R (3021) | | | |
| 6A | | M5-2R (3021) | | | |
| 7 | | M6-1L (3021) | | | |
| 7A | | M6-1R (3021) | | | |
| 8 | | M5-1R (3021) | | | |
| 8A | | M5-1L (3021) | | | |
- WB I-64 DETOUR

PCMS MESSAGE BEFORE CLOSURE

PHASE 1
WB I-64
CLOSED
AT 18TH ST

PHASE 2

FROM
XX-XX-XX

PCMS MESSAGE AFTER START
OF CLOSURE

PHASE 1
WB I-64
CLOSED
AT 18TH ST

PHASE 2

FOLLOW
DETOUR

STATE OF ILLINOIS
DEPARTMENT OF TRANSPORTATION

F.A.I. ROUTE 64 OVER SN 082-0153, -0154, -0157, -0159 & -0161
DETOUR PLAN - STAGE 1 WB I-64 CLOSURE (THROUGH TRAFFIC)

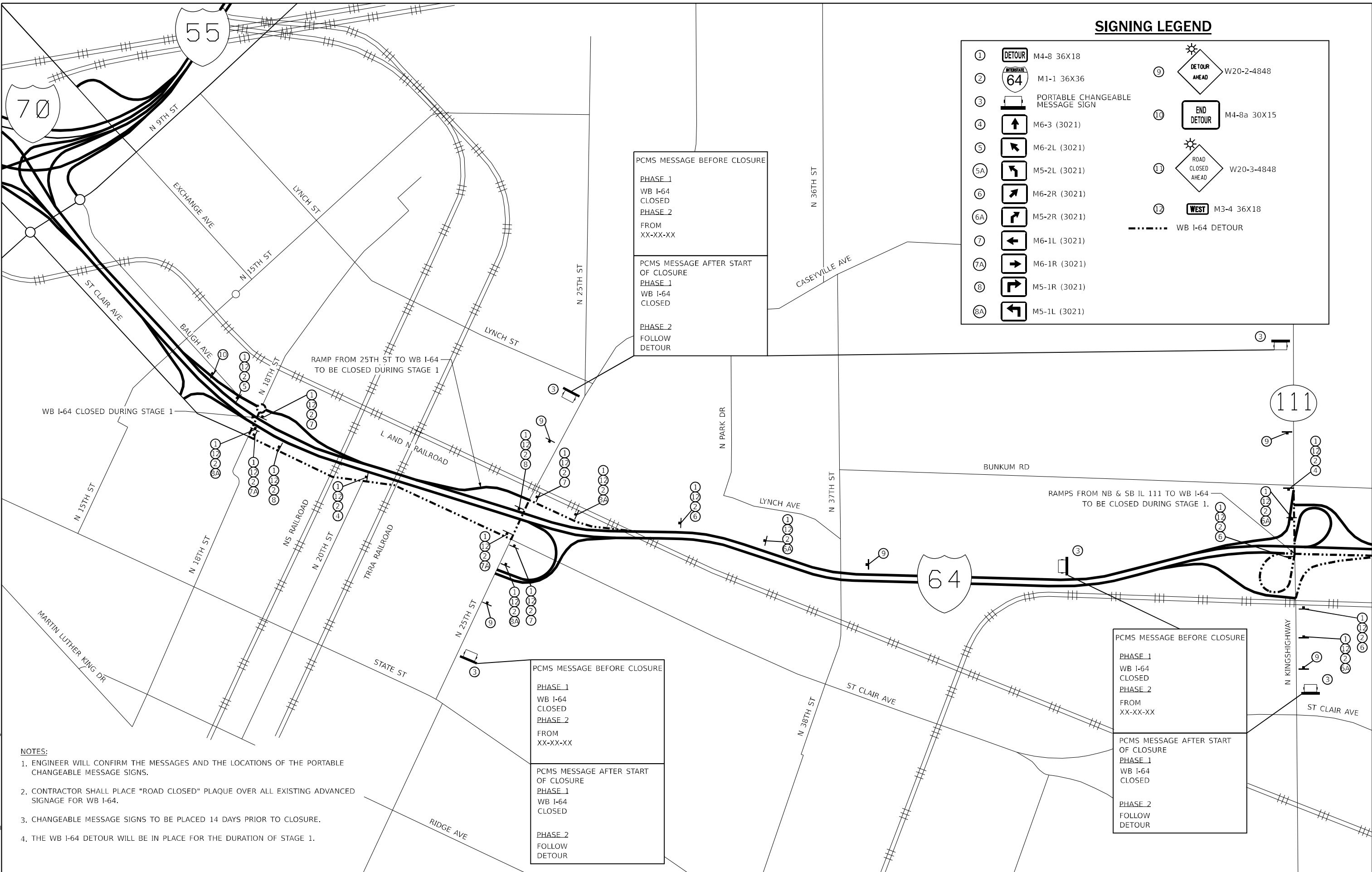
N.T.S. SHEET 1 OF 3 SHEETS STA. TO STA.

F.A.I. RTE.	SECTION	COUNTY	TOTAL SHEETS	SHEET NO.
64	82-1RS-2, 82-(1,2)BDR-1	ST CLAIR	27	13
CONTRACT NO. 76U73				
ILLINOIS FED. AID PROJECT				

MODEL: Detour [Sheet]
FILE NAME: E:\2021-8\CADD_Sheets\0876\U73-sh1-detour-03.dgn

USER NAME	= jkehn	DESIGNED	- JK	REVISED	-
		DRAWN	- JK	REVISED	-
PLOT SCALE	= 0.16666667' / in.	CHECKED	- RC	REVISED	-
PLOT DATE	= 12/2/2025	DATE	- 12/2/2025	REVISED	-

MODEL: Detour [Sheet]
FILE NAME: E:\2021-8\CADD_Sheets\0876\73-sh1-detour-02.dgn



SIGNING LEGEND

① M4-8 36X18

② M1-1 36X36

③ PORTABLE CHANGEABLE MESSAGE SIGN

④ M6-3 (3021)

⑤ M6-2L (3021)

⑤A M5-2L (3021)

⑥ M6-2R (3021)

⑥A M5-2R (3021)

⑦ M6-1L (3021)

⑦A M6-1R (3021)

⑧ M5-1R (3021)

⑧A M5-1L (3021)

⑨ W20-2-4848

⑩ M4-8a 30X15

⑪ W20-3-4848

⑫ M3-4 36X18

WB I-64 DETOUR

- NOTES:**
- ENGINEER WILL CONFIRM THE MESSAGES AND THE LOCATIONS OF THE PORTABLE CHANGEABLE MESSAGE SIGNS.
 - CONTRACTOR SHALL PLACE "ROAD CLOSED" PLAQUE OVER ALL EXISTING ADVANCED SIGNAGE FOR WB I-64.
 - CHANGEABLE MESSAGE SIGNS TO BE PLACED 14 DAYS PRIOR TO CLOSURE.
 - THE WB I-64 DETOUR WILL BE IN PLACE FOR THE DURATION OF STAGE 1.

PCMS MESSAGE BEFORE CLOSURE

PHASE 1
WB I-64
CLOSED

PHASE 2
FROM
XX-XX-XX

PCMS MESSAGE AFTER START
OF CLOSURE

PHASE 1
WB I-64
CLOSED

PHASE 2
FOLLOW
DETOUR

PCMS MESSAGE BEFORE CLOSURE

PHASE 1
WB I-64
CLOSED

PHASE 2
FROM
XX-XX-XX

PCMS MESSAGE AFTER START
OF CLOSURE

PHASE 1
WB I-64
CLOSED

PHASE 2
FOLLOW
DETOUR

PCMS MESSAGE BEFORE CLOSURE

PHASE 1
WB I-64
CLOSED

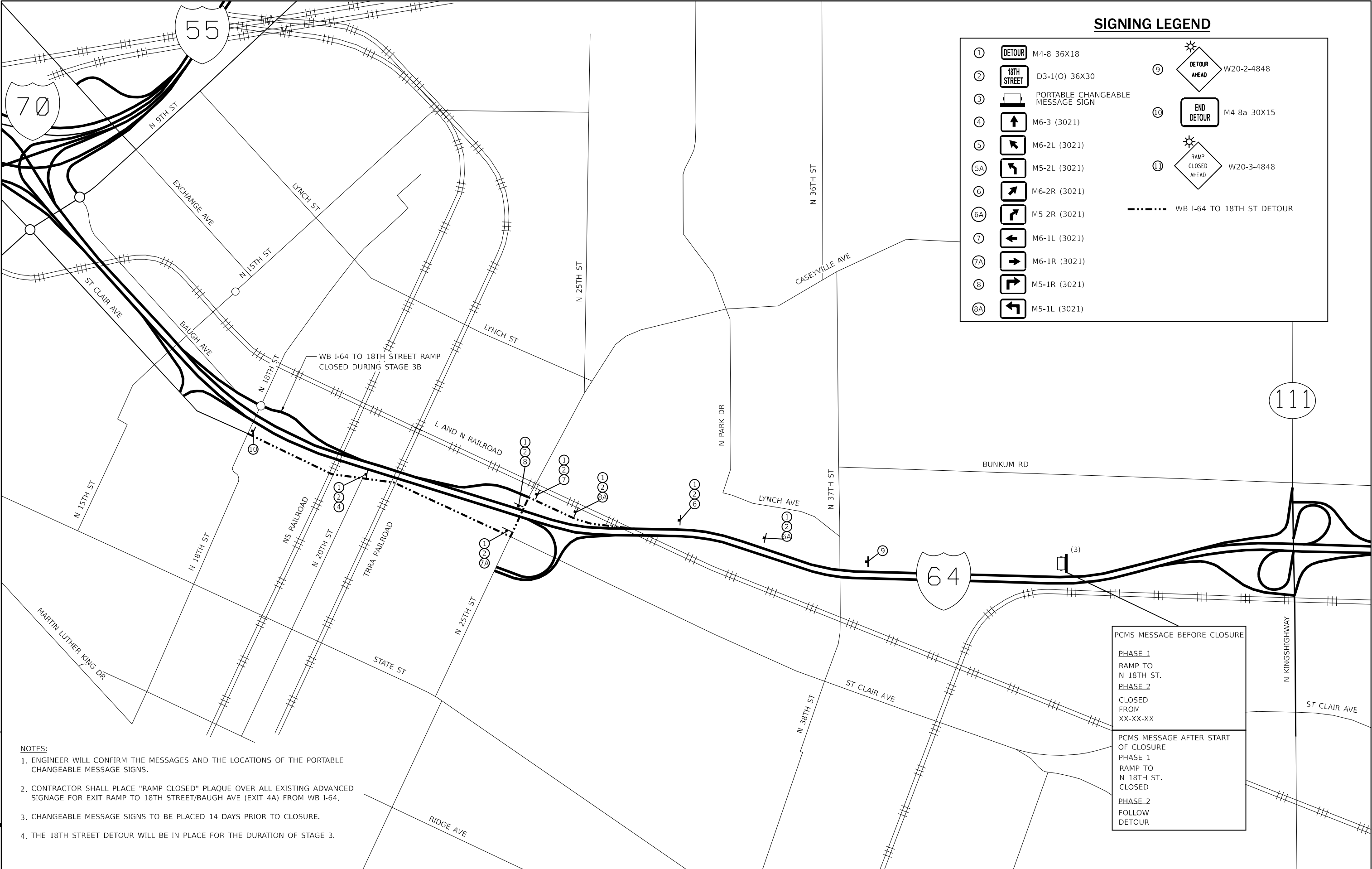
PHASE 2
FROM
XX-XX-XX

PCMS MESSAGE AFTER START
OF CLOSURE

PHASE 1
WB I-64
CLOSED

PHASE 2
FOLLOW
DETOUR

MODEL: Detour [Sheet]
FILE NAME: E:\2021-8\CADD_Sheets\0876\73-sh-1-detour-01.dgn



SIGNING LEGEND

①	DETOUR	M4-8 36X18	⑨		W20-2-4848
②	18TH STREET	D3-1(O) 36X30	⑩	END DETOUR	M4-8a 30X15
③		PORTABLE CHANGEABLE MESSAGE SIGN	⑪		W20-3-4848
④		M6-3 (3021)	----- WB I-64 TO 18TH ST DETOUR		
⑤		M6-2L (3021)			
⑤A		M5-2L (3021)			
⑥		M6-2R (3021)			
⑥A		M5-2R (3021)			
⑦		M6-1L (3021)			
⑦A		M6-1R (3021)			
⑧		M5-1R (3021)			
⑧A		M5-1L (3021)			

- NOTES:
- ENGINEER WILL CONFIRM THE MESSAGES AND THE LOCATIONS OF THE PORTABLE CHANGEABLE MESSAGE SIGNS.
 - CONTRACTOR SHALL PLACE "RAMP CLOSED" PLAQUE OVER ALL EXISTING ADVANCED SIGNAGE FOR EXIT RAMP TO 18TH STREET/BAUGH AVE (EXIT 4A) FROM WB I-64.
 - CHANGEABLE MESSAGE SIGNS TO BE PLACED 14 DAYS PRIOR TO CLOSURE.
 - THE 18TH STREET DETOUR WILL BE IN PLACE FOR THE DURATION OF STAGE 3.

PCMS MESSAGE BEFORE CLOSURE

PHASE 1
RAMP TO
N 18TH ST.

PHASE 2
CLOSED
FROM
XX-XX-XX

PCMS MESSAGE AFTER START
OF CLOSURE

PHASE 1
RAMP TO
N 18TH ST.
CLOSED

PHASE 2
FOLLOW
DETOUR

MODEL: Plan-1 [Sheet]
FILE NAME: E:\2024\3\CADD_Sheets\0876\73-sh-1-plan.dgn



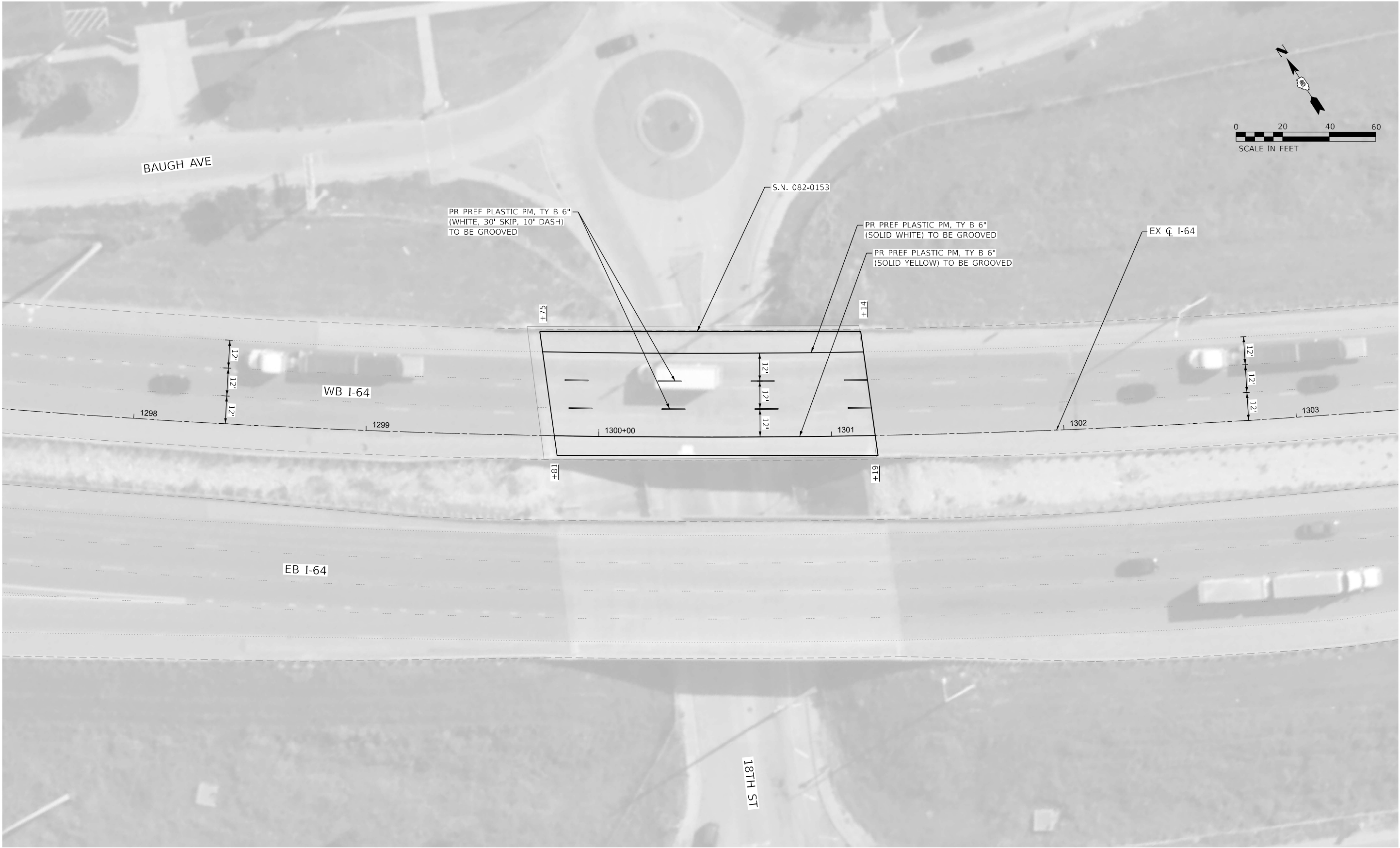
USER NAME = rober	DESIGNED - CB	REVISED -
	DRAWN - CB	REVISED -
PLOT SCALE = 0.1666667' / in.	CHECKED - RC	REVISED -
PLOT DATE = 12/5/2025	DATE - 12/2025	REVISED -

STATE OF ILLINOIS
DEPARTMENT OF TRANSPORTATION

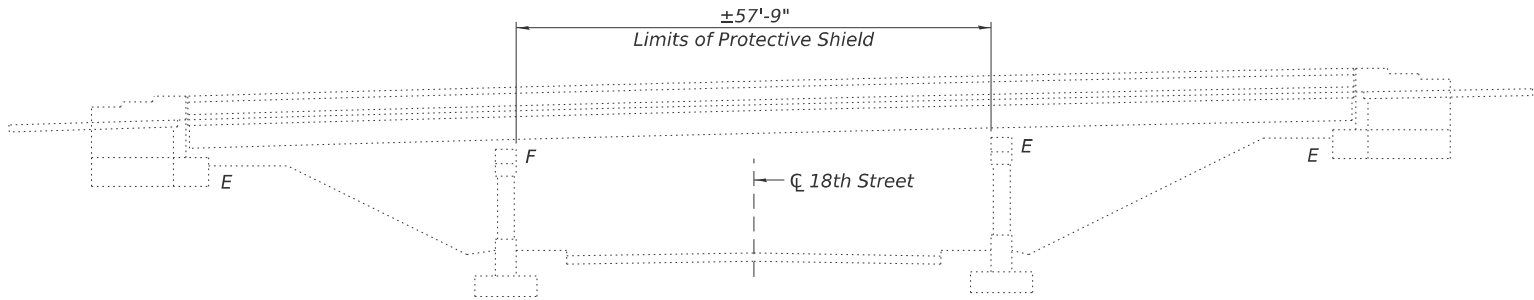
F.A.I. ROUTE 64 OVER SN 082-0153, -0154, -0157, -0159 & -0161
ROADWAY PLAN

SCALE: 1"=20' SHEET 1 OF 1 SHEETS STA. 1299+75.00 TO STA. 1301+19.00

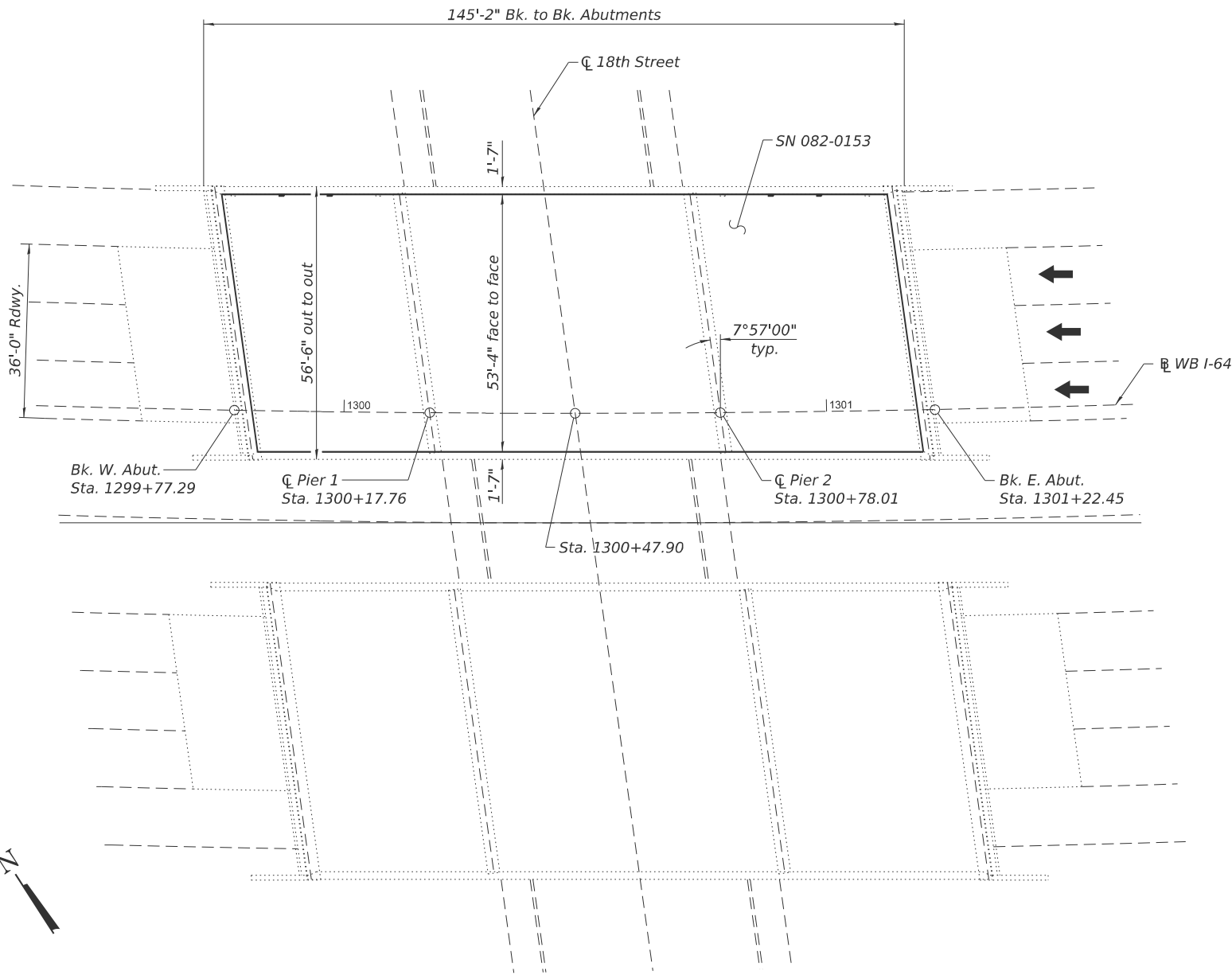
F.A.I. RTE.	SECTION	COUNTY	TOTAL SHEETS	SHEET NO.
64	82-1RS-2, 82-(1,2)BDR-1	ST CLAIR	27	16
CONTRACT NO. 76U73				
ILLINOIS FED. AID PROJECT				



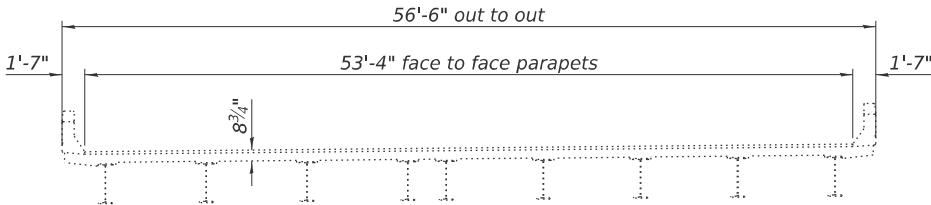
Existing Structure: SN 082-0153 built in 1974 as FAI Rte. 64, Section 82-1HB-2. The structure is a three span bridge with concrete deck on steel beams, measuring 145'-2" back to back abutments, 56'-6" out to out, with 7°57' right ahead skew. The substructure consists of concrete pile supported stub abutments and multi-column piers on timber piles. Work to be performed under closure of WB I-64.



ELEVATION



PLAN



WB CROSS SECTION
(Looking East)

GENERAL NOTES

- 1. Prior to pouring the new concrete patches, all heavy or loose rust, loose mill scale, and other loose detrimental foreign material shall be removed from the surfaces in contact with concrete (SSPC-SP3 standards). Tightly adhered paint may remain unless otherwise noted. Removal shall be accomplished by methods that will not damage the steel and the cost will be paid for according to Article 109.04 of the Standard Specifications.
- 2. Plan dimensions and details relative to the existing structure have been taken from existing plans are subject to nominal construction variations. The Contactor shall field verify existing dimensions and details affecting new construction and make necessary approved adjustments prior to construction or ordering of materials. Such variations shall not be cause for additional compensation for a change in scope of the work, however, the Contractor will be paid for the quantity actually furnished at the unit price bid for the work.
- 3. Protective Coat shall only be applied to new concrete.

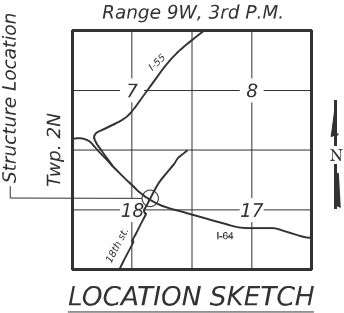
TOTAL BILL OF MATERIAL

ITEM	UNIT	TOTAL
Protective Shield	Sq. Yd.	363
Bridge Deck Grooving	Sq. Yd.	787
Protective Coat	Sq. Yd.	817
Deck Slab Repair (Full Depth, Type II)	Sq. Yd.	2
Bridge Deck Scarification 2"	Sq. Yd.	817
Bridge Deck Microsilica Concrete Overlay 2"	Sq. Yd.	817
Plug Existing Floor Drains	Each	4



Michael J. Haley
Michael T. Haley
Licensed Structural Engineer
State of Illinois No. 081-005991
Expires 11/30/2026

11/25/2025
Date

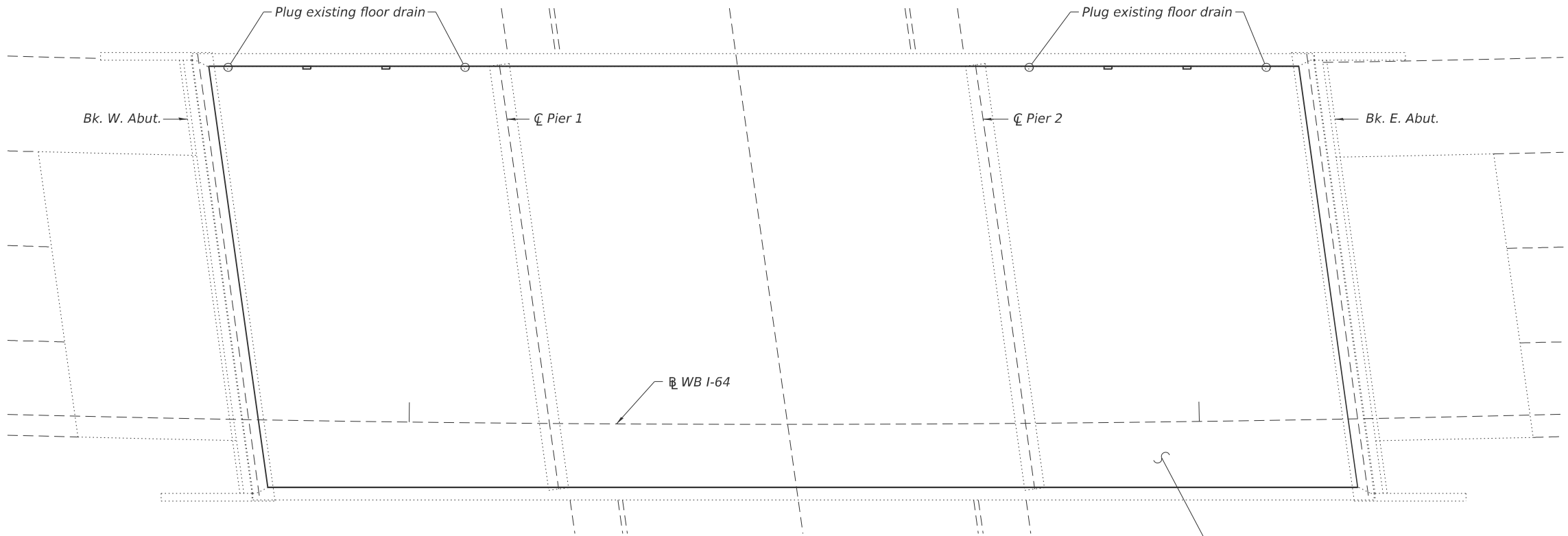


GENERAL PLAN AND ELEVATION
WB I-64 OVER 18TH STREET

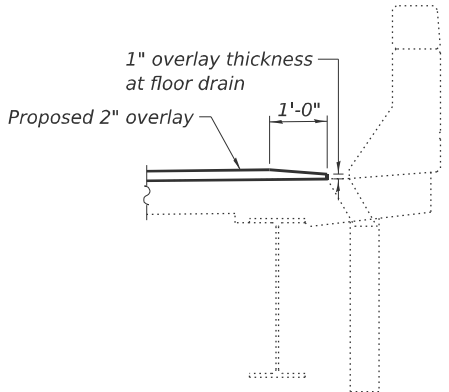
F.A.I. RTE. 64 - SEC. 82-1RS-2, 82-(1,2)BDR-1
ST. CLAIR COUNTY
STATION 1300+47.90
STRUCTURE NO. 082-0153

USER NAME = mhale	DESIGNED - MTH	REVISED -
	DRAWN - SJH	REVISED -
PLOT SCALE = \$SCALE\$	CHECKED - CL	REVISED -
PLOT DATE = 12/30/2025	CHECK DATE - 10/2025	REVISED -

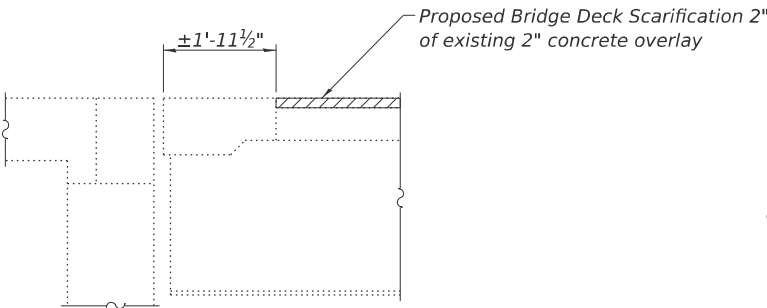
F.A.I. RTE.	SECTION	COUNTY	TOTAL SHEETS	SHEET NO.
64	82-1RS-2, 82-(1,2)BDR-1	ST. CLAIR	27	17
CONTRACT NO. 76U73				
ILLINOIS FED. AID PROJECT				



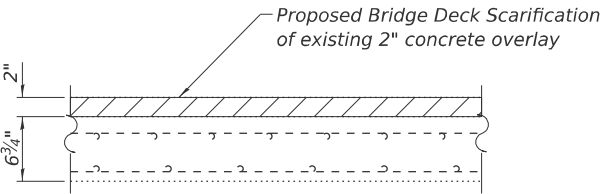
SN 082-0153 DECK PLAN



OVERLAY AT DRAIN DETAIL

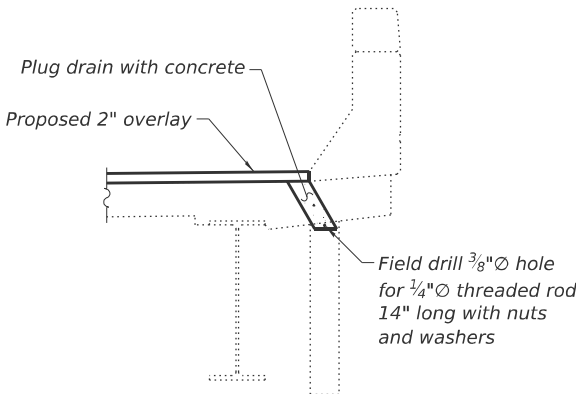


EXISTING SECTION AT JOINT

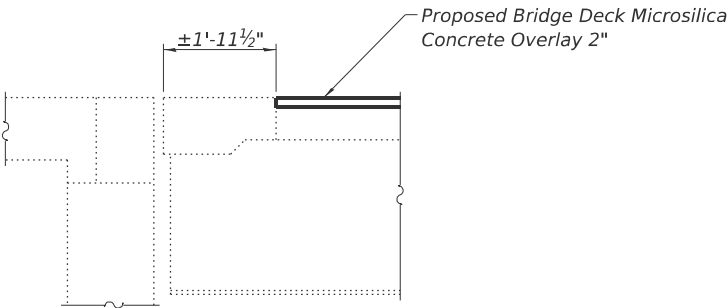


EXISTING BRIDGE DECK CROSS SECTION

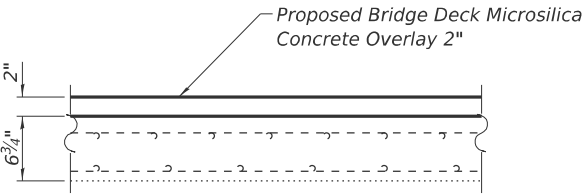
Note:
Repair area is estimated. The Engineer shall document actual locations of repairs on as-built plans.



PLUGGING FLOOR DRAIN DETAIL



PROPOSED SECTION AT JOINT



PROPOSED BRIDGE DECK CROSS SECTION

BILL OF MATERIAL

ITEM	UNIT	TOTAL
Deck Slab Repair (Full Depth, Type II)	Sq. Yd.	2
Bridge Deck Scarification 2"	Sq. Yd.	817
Bridge Deck Microsilica Concrete Overlay 2"	Sq. Yd.	817
Plug Existing Floor Drains	Each	4

MODEL: Br. Sheet Consultant
FILE NAME: E:\2021-8\Struct\CADD (ORD)\CADD_Sheets\0820153-76U73-003-DeckPlan.dgn



USER NAME = Mike Haley	DESIGNED - MTH	REVISED -
PLOT SCALE = \$SCALE\$	DRAWN - SJH	REVISED -
PLOT DATE = 12/2/2025	CHECKED - CL	REVISED -
	CHECK DATE - 10/2025	REVISED -

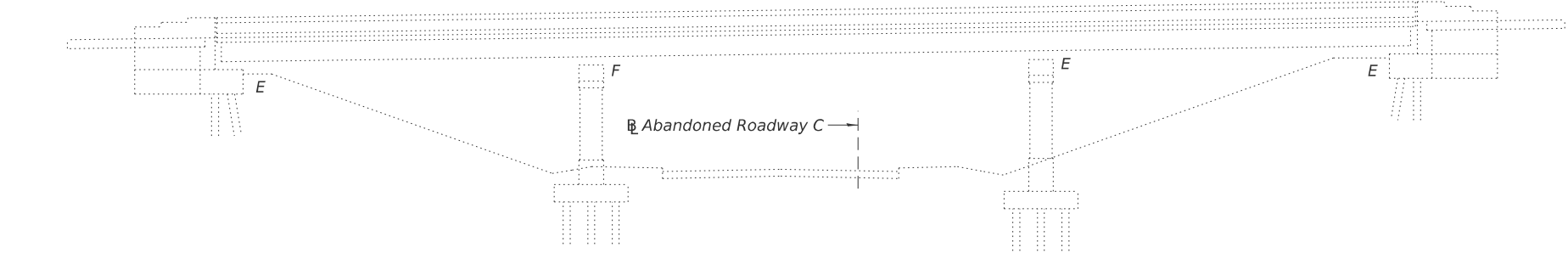
STATE OF ILLINOIS
DEPARTMENT OF TRANSPORTATION

DECK REPAIR PLAN
STRUCTURE NO. 082-0153

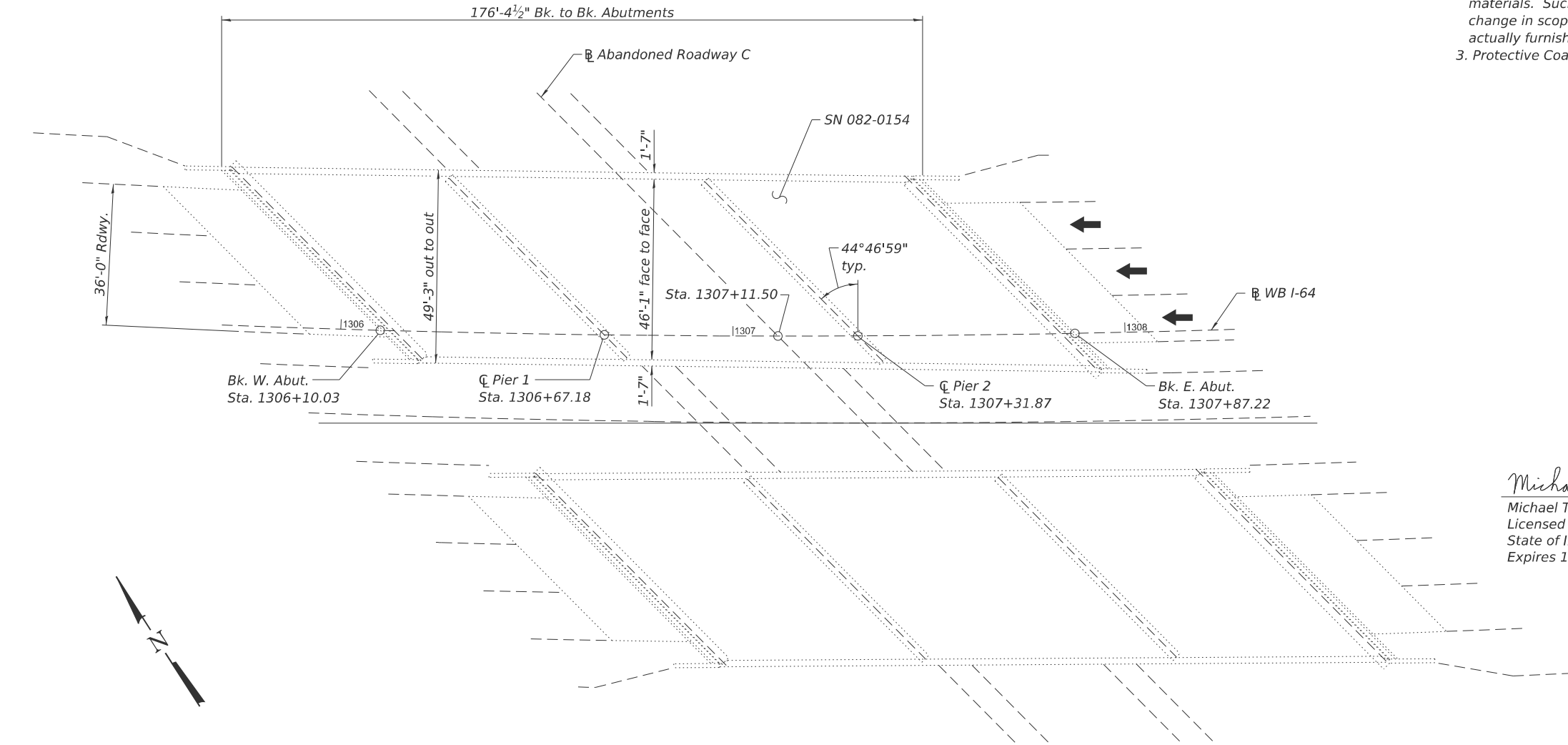
SHEET 2 OF 2 SHEETS

F.A.I. RTE.	SECTION	COUNTY	TOTAL SHEETS	SHEET NO.
64	82-1RS-2, 82-(1,2)BDR-1	ST. CLAIR	27	18
CONTRACT NO. 76U73				
ILLINOIS FED. AID PROJECT				

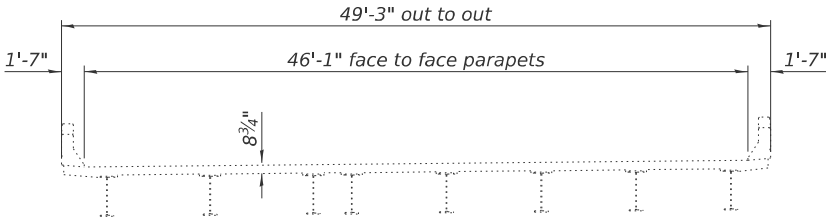
Existing Structure: SN 082-0154 built in 1968 as FAI Rte. 64, Section 82-1HB-3. The structure is a three span bridge with concrete deck on steel beams, measuring 176'-4½" back to back abutments, 49'-3" out to out, with 44°46'59" right ahead skew. The substructure consists of concrete pile supported stub abutments and multi-column piers on timber piles.



ELEVATION



PLAN



WB CROSS SECTION
(Looking East)

GENERAL NOTES

1. Prior to pouring the new concrete patches, all heavy or loose rust, loose mill scale, and other loose detrimental foreign material shall be removed from the surfaces in contact with concrete (SSPC-SP3 standards). Tightly adhered paint may remain unless otherwise noted. Removal shall be accomplished by methods that will not damage the steel and the cost will be paid for according to Article 109.04 of the Standard Specifications.
2. Plan dimensions and details relative to the existing structure have been taken from existing plans are subject to nominal construction variations. The Contactor shall field verify existing dimensions and details affecting new construction and make necessary approved adjustments prior to construction or ordering of materials. Such variations shall not be cause for additional compensation for a change in scope of the work, however, the Contractor will be paid for the quantity actually furnished at the unit price bid for the work.
3. Protective Coat shall only be applied to new concrete.

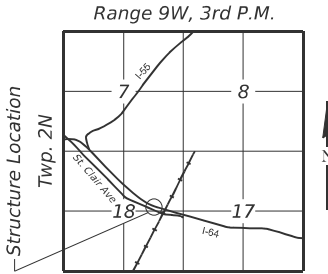
TOTAL BILL OF MATERIAL

ITEM	UNIT	TOTAL
Protective Coat	Sq. Yd.	198
Deck Slab Repair (Partial)	Sq. Yd.	191
Deck Slab Repair (Full Depth, Type II)	Sq. Yd.	7



Michael T. Haley
Licensed Structural Engineer
State of Illinois No. 081-005991
Expires 11/30/2026

11/25/2025
Date



LOCATION SKETCH

GENERAL PLAN AND ELEVATION
WB I-64 OVER ABANDONED ROADWAY C
F.A.I. RTE. 64 - SEC. 82-1RS-2, 82-(1,2)BDR-1
ST. CLAIR COUNTY
STATION 1307+11.50
STRUCTURE NO. 082-0154

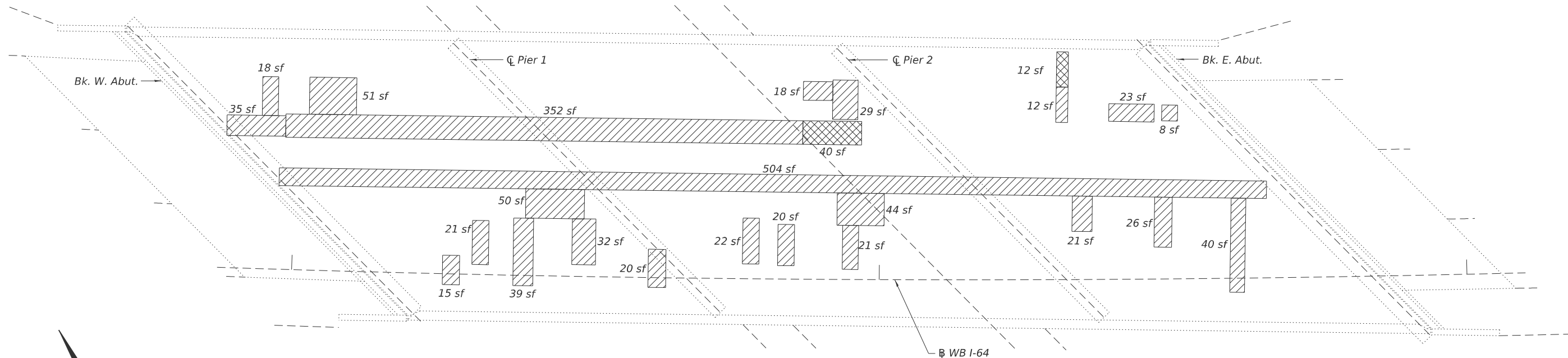


USER NAME = mhale	DESIGNED - MTH	REVISED -
DRAWN - SJH	REVISED -	
PLOT SCALE = \$SCALE\$	CHECKED - CL	REVISED -
PLOT DATE = 12/30/2025	CHECK DATE - 10/2025	REVISED -

STATE OF ILLINOIS
DEPARTMENT OF TRANSPORTATION

SHEET 1 OF 2 SHEETS

F.A.I. RTE.	SECTION	COUNTY	TOTAL SHEETS	SHEET NO.
64	82-1RS-2, 82-(1,2)BDR-1	ST. CLAIR	27	19
CONTRACT NO. 76U73				
ILLINOIS FED. AID PROJECT				



SN 082-0154 DECK PLAN

LEGEND

- Deck Slab Repair (Partial)
- Deck Slab Repair (Full Depth)
- sf Square Feet

Note:
Repair areas shown are estimated. The Engineer shall document actual locations of repairs on as-built plans.

BILL OF MATERIAL

ITEM	UNIT	TOTAL
Protective Coat	Sq. Yd.	198
Deck Slab Repair (Partial)	Sq. Yd.	191
Deck Slab Repair (Full Depth, Type II)	Sq. Yd.	7

MODEL: Br Sheet Consultant
FILE NAME: E:\2021-8\Struct\CADD (ORD)\CADD_Sheets\0820154-76U73-002-DeckPlan.dgn



USER NAME = Mike Haley	DESIGNED - MTH	REVISED -
	DRAWN - SJH	REVISED -
PLOT SCALE = \$SCALE\$	CHECKED - CL	REVISED -
PLOT DATE = 11/25/2025	CHECK DATE - 10/2025	REVISED -

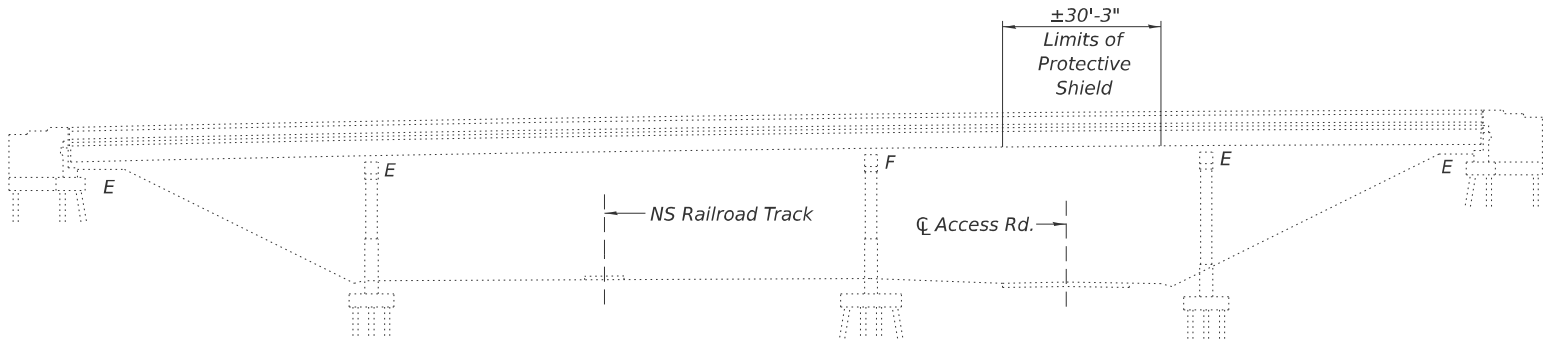
STATE OF ILLINOIS
DEPARTMENT OF TRANSPORTATION

DECK REPAIR PLAN
STRUCTURE NO. 082-0154

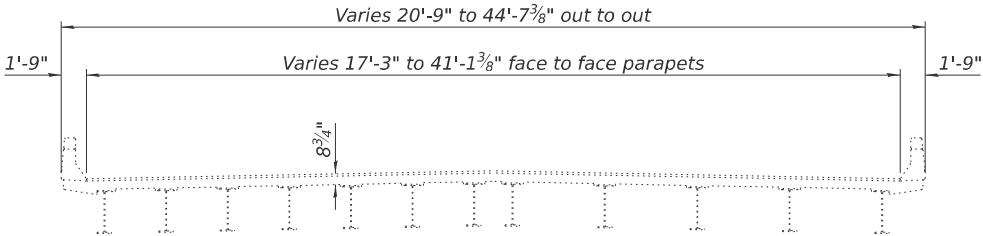
SHEET 2 OF 2 SHEETS

F.A.I. RTE.	SECTION	COUNTY	TOTAL SHEETS	SHEET NO.
64	82-1RS-2, 82-(1,2)BDR-1	ST. CLAIR	27	20
CONTRACT NO. 76U73				
ILLINOIS FED. AID PROJECT				

Existing Structure: SN 082-0157 built in 1974 as FAI Rte. 64, Section 82-1VB. The structure is a four span bridge with concrete deck on steel beams, measuring 272'-2³/₈" back to back abutments, out to out varying 20'-9" to 44'-7³/₈", with 7°28' left ahead skew. The substructure consists of concrete pile supported stub abutments and multi-column piers on timber piles.



ELEVATION



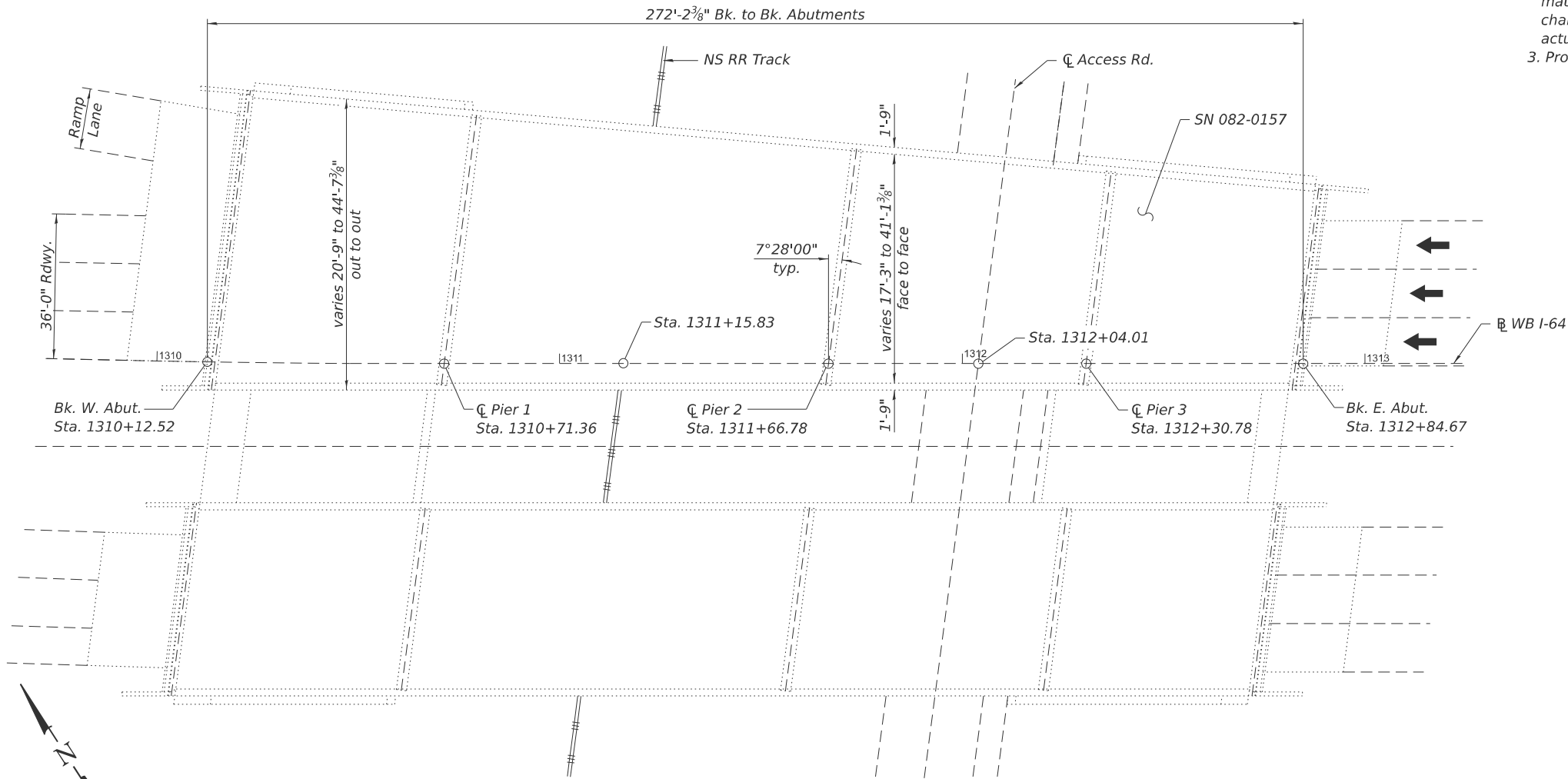
WB CROSS SECTION
(Looking East)

GENERAL NOTES

1. Prior to pouring the new concrete patches, all heavy or loose rust, loose mill scale, and other loose detrimental foreign material shall be removed from the surfaces in contact with concrete (SSPC-SP3 standards). Tightly adhered paint may remain unless otherwise noted. Removal shall be accomplished by methods that will not damage the steel and the cost will be paid for according to Article 109.04 of the Standard Specifications.
2. Plan dimensions and details relative to the existing structure have been taken from existing plans are subject to nominal construction variations. The Contactor shall field verify existing dimensions and details affecting new construction and make necessary approved adjustments prior to construction or ordering of materials. Such variations shall not be cause for additional compensation for a change in scope of the work, however, the Contractor will be paid for the quantity actually furnished at the unit price bid for the work.
3. Protective Coat shall only be applied to new concrete.

TOTAL BILL OF MATERIAL

ITEM	UNIT	TOTAL
Stone Dumped Riprap, Class A4	Sq. Yd.	45
Slope Wall Removal	Sq. Yd.	45
Protective Shield	Sq. Yd.	194
Protective Coat	Sq. Yd.	138
Deck Slab Repair (Partial)	Sq. Yd.	136
Deck Slab Repair (Full Depth, Type II)	Sq. Yd.	2

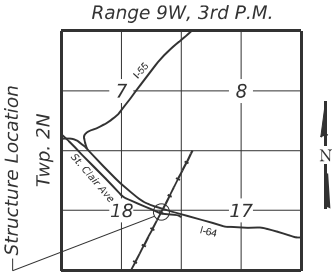


PLAN



Michael T. Haley
Licensed Structural Engineer
State of Illinois No. 081-005991
Expires 11/30/2026

11/25/2025
Date



LOCATION SKETCH

GENERAL PLAN AND ELEVATION
WB I-64 OVER NS RAILROAD
F.A.I. RTE. 64 - SEC. 82-1RS-2, 82-(1,2)BDR-1
ST. CLAIR COUNTY
STATION 1311+15.83
STRUCTURE NO. 082-0157

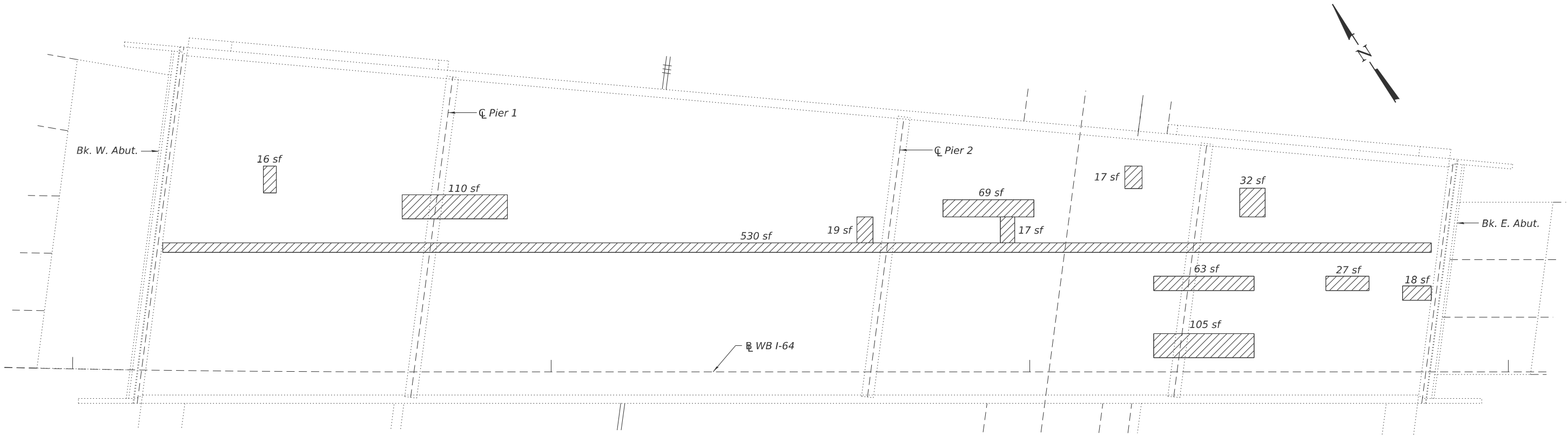


USER NAME = mhale	DESIGNED - MTH	REVISED -
	DRAWN - SJH	REVISED -
PLOT SCALE = \$SCALE\$	CHECKED - CL	REVISED -
PLOT DATE = 12/30/2025	CHECK DATE - 10/2025	REVISED -

STATE OF ILLINOIS
DEPARTMENT OF TRANSPORTATION

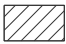

SHEET 1 OF 3 SHEETS

F.A.I. RTE.	SECTION	COUNTY	TOTAL SHEETS	SHEET NO.
64	82-1RS-2, 82-(1,2)BDR-1	ST. CLAIR	27	21
CONTRACT NO. 76U73				
ILLINOIS FED. AID PROJECT				



SN 082-0157 DECK PLAN

LEGEND

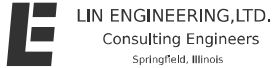
-  Deck Slab Repair (Partial)
-  Deck Slab Repair (Full Depth)
- sf Square Feet

Note:
Repair areas shown are estimated. The Engineer shall document actual locations of repairs on as-built plans.

BILL OF MATERIAL

ITEM	UNIT	TOTAL
Deck Slab Repair (Partial)	Sq. Yd.	136
Deck Slab Repair (Full Depth, Type II)	Sq. Yd.	2

MODEL: Br Sheet Consultant
FILE NAME: E:\2021-8\Struct\CADD (ORD)\CADD_Sheets\0820157-76U73-002-DeckPlan.dgn



USER NAME = Mike Haley	DESIGNED - MTH	REVISED -
	DRAWN - SJH	REVISED -
PLOT SCALE = \$SCALE\$	CHECKED - CL	REVISED -
PLOT DATE = 11/25/2025	CHECK DATE - 10/2025	REVISED -

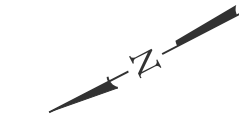
STATE OF ILLINOIS
DEPARTMENT OF TRANSPORTATION

DECK REPAIR PLAN
STRUCTURE NO. 082-0157

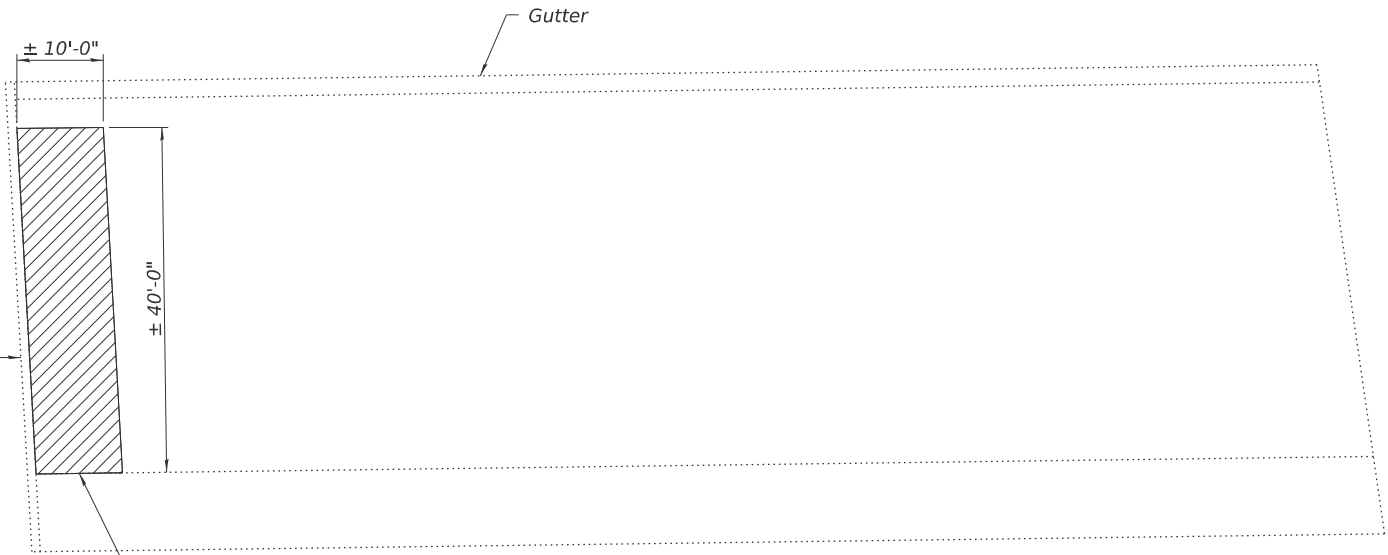
SHEET 2 OF 3 SHEETS

F.A.I. RTE.	SECTION	COUNTY	TOTAL SHEETS	SHEET NO.
64	82-1RS-2, 82-(1,2)BDR-1	ST. CLAIR	27	22
CONTRACT NO. 76U73				
ILLINOIS FED. AID PROJECT				

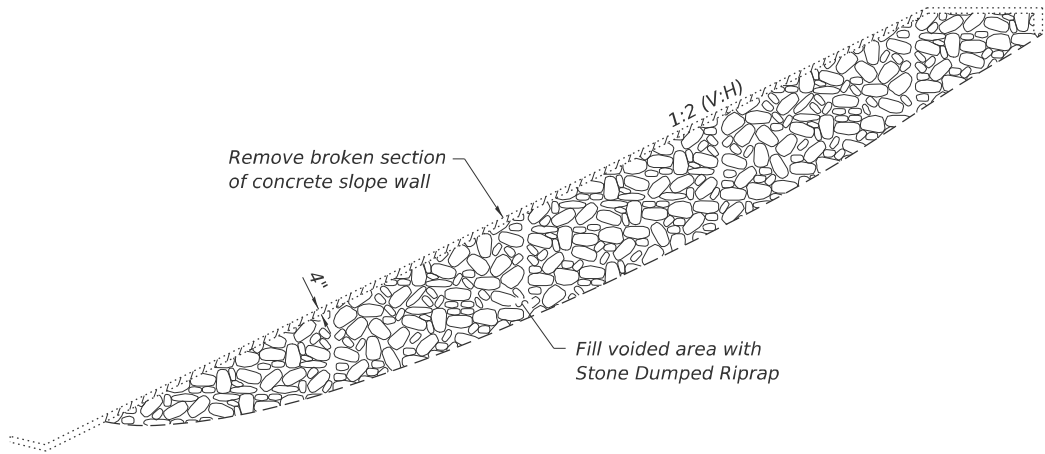
MODEL: Br Sheet Consultant
FILE NAME: E:\2021-8\Struct\CADD (ORD)\CADD_Sheets\0820157-76U73-003-SlopeWall.dgn



EAST SLOPE WALL PLAN



WEST SLOPE WALL PLAN



SLOPE WALL SECTION AT REPAIR

Notes:
Slope wall work shall include but may not be limited to the areas shown. The actual area to be repaired shall be determined by the Engineer at time of construction.
Layout and limits of the slope wall removal and riprap placement may be varied to suit conditions in the field as directed by the Engineer.
All silt, sand and other debris in the gutter at bottom of slope walls shall be removed. Cost included with Slope Wall Removal.

BILL OF MATERIAL

ITEM	UNIT	TOTAL
Stone Dumped Riprap, Class A4	Sq. Yd.	45
Slope Wall Removal	Sq. Yd.	45



USER NAME = Mike Haley	DESIGNED - MTH	REVISED -
DRAWN - SJH	REVIS	ED -
PLOT SCALE = \$SCALE\$	CHECKED - CL	REVISED -
PLOT DATE = 11/25/2025	CHECK DATE - 10/2025	REVISED -

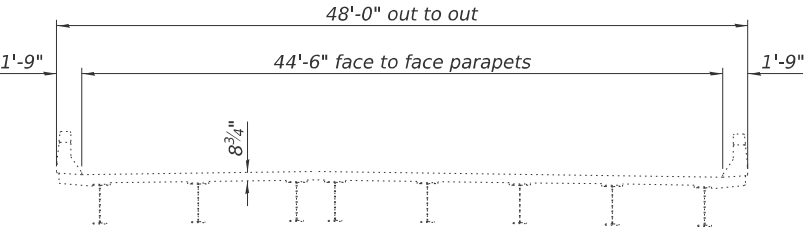
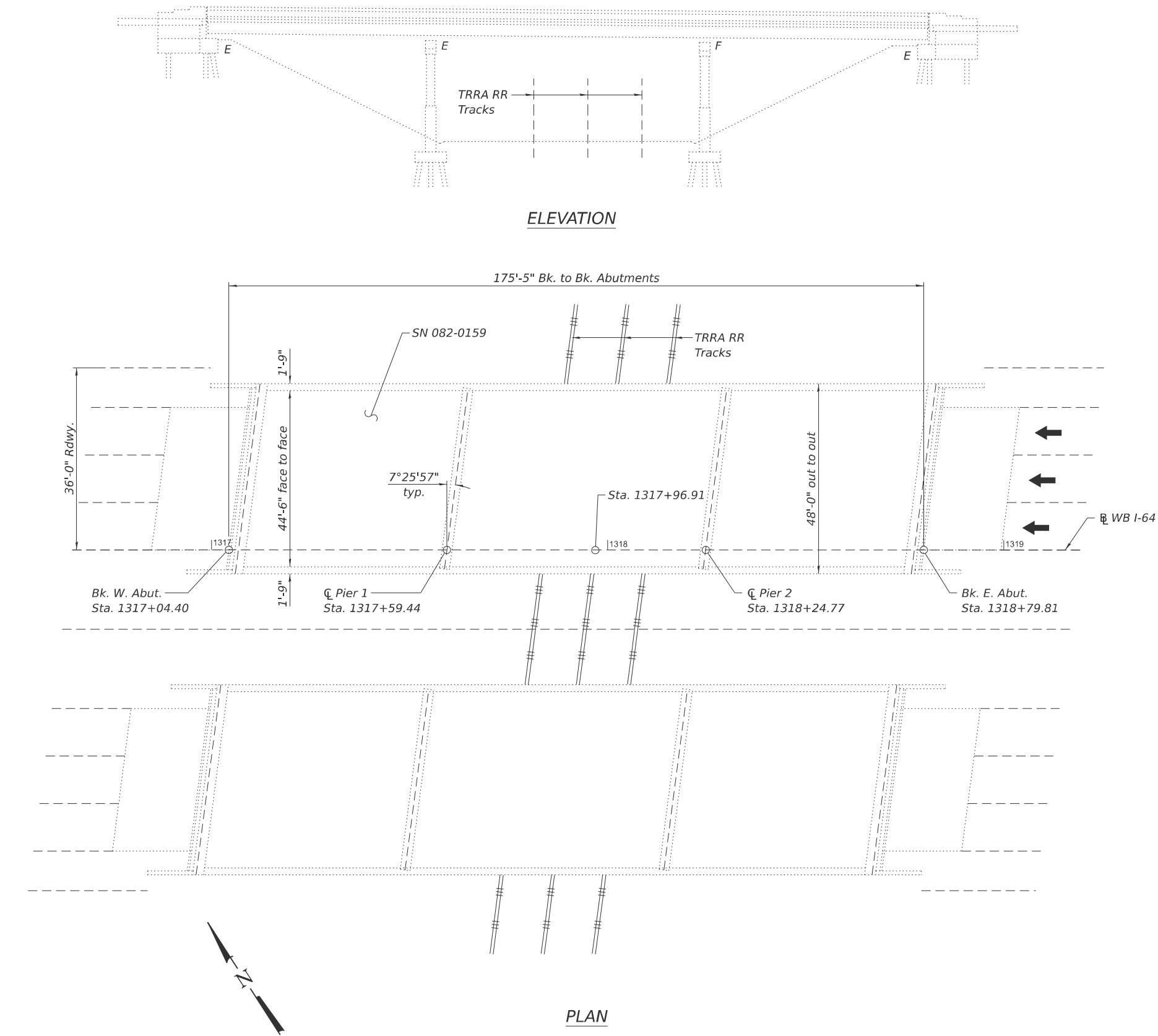
STATE OF ILLINOIS
DEPARTMENT OF TRANSPORTATION

SLOPE WALL REPAIR
STRUCTURE NO. 082-0157

SHEET 3 OF 3 SHEETS

F.A.I. RTE.	SECTION	COUNTY	TOTAL SHEETS	SHEET NO.
64	82-1RS-2, 82-(1,2)BDR-1	ST. CLAIR	27	23
CONTRACT NO. 76U73				
ILLINOIS FED. AID PROJECT				

Existing Structure: SN 082-0159 built in 1968 as FAI Rte. 64, Section 82-1VB-1. The structure is a three span bridge with concrete deck on steel beams measuring 175'-5" back to back abutments, 48'-0" out to out, with 7°25'57" left ahead skew. The substructure consists of concrete pile supported stub abutments and multi-column piers on timber piles.



WB CROSS SECTION
(Looking East)

GENERAL NOTES

1. Prior to pouring the new concrete patches, all heavy or loose rust, loose mill scale, and other loose detrimental foreign material shall be removed from the surfaces in contact with concrete (SSPC-SP3 standards). Tightly adhered paint may remain unless otherwise noted. Removal shall be accomplished by methods that will not damage the steel and the cost will be paid for according to Article 109.04 of the Standard Specifications.
2. Plan dimensions and details relative to the existing structure have been taken from existing plans are subject to nominal construction variations. The Contactor shall field verify existing dimensions and details affecting new construction and make necessary approved adjustments prior to construction or ordering of materials. Such variations shall not be cause for additional compensation for a change in scope of the work, however, the Contractor will be paid for the quantity actually furnished at the unit price bid for the work.
3. Protective Coat shall only be applied to new concrete.

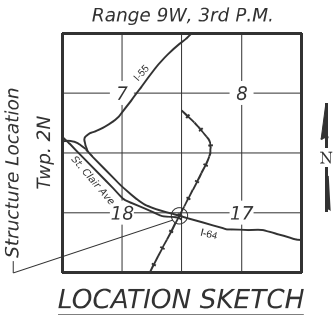
TOTAL BILL OF MATERIAL

ITEM	UNIT	TOTAL
Protective Coat	Sq. Yd.	193
Deck Slab Repair (Partial)	Sq. Yd.	164
Deck Slab Repair (Full Depth, Type II)	Sq. Yd.	29



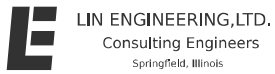
Michael T. Haley
Licensed Structural Engineer
State of Illinois No. 081-005991
Expires 11/30/2026

11/25/2025
Date



GENERAL PLAN AND ELEVATION
WB I-64 OVER TRRA RAILROAD
F.A.I. RTE. 64 - SEC. 82-1RS-2, 82-(1,2)BDR-1
ST. CLAIR COUNTY
STATION 1317+96.91
STRUCTURE NO. 082-0159

MODEL: Br Sheet Consultant
FILE NAME: E:\2021\8\Struct\CADD (ORD)\CADD_Sheets\0820159-78U73-001-CPE.dgn

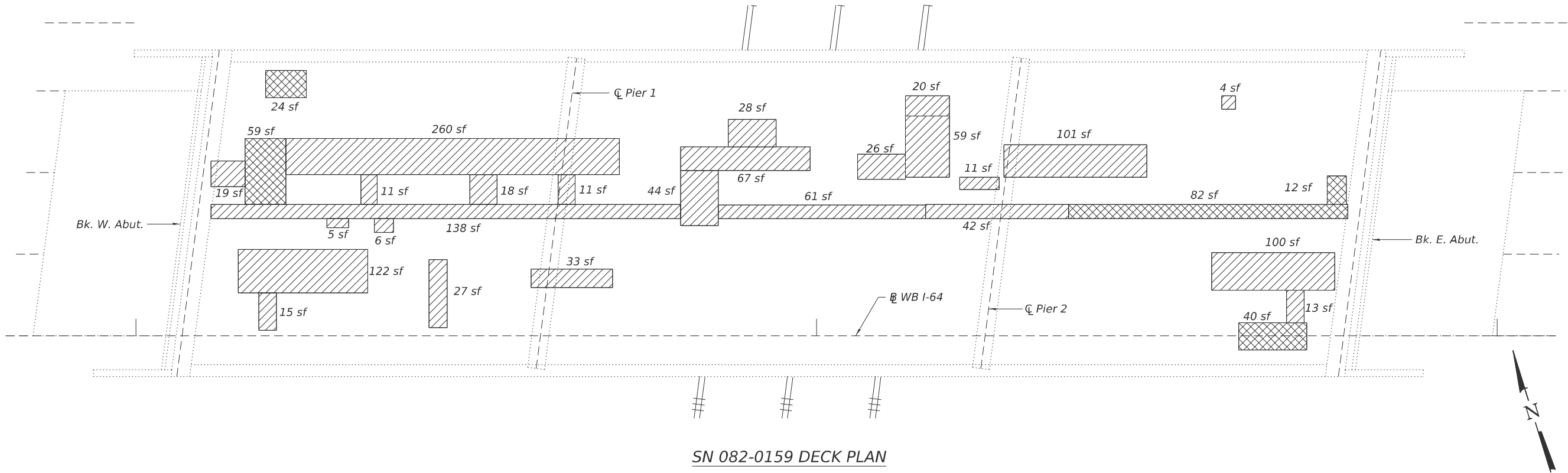


USER NAME = mhale	DESIGNED - MTH	REVISED -
	DRAWN - SJH	REVISED -
PLOT SCALE = \$SCALE\$	CHECKED - CL	REVISED -
PLOT DATE = 12/30/2025	CHECK DATE = 10/2025	REVISED -

STATE OF ILLINOIS
DEPARTMENT OF TRANSPORTATION


SHEET 1 OF 2 SHEETS

F.A.I. RTE.	SECTION	COUNTY	TOTAL SHEETS	SHEET NO.
64	82-1RS-2, 82-(1,2)BDR-1	ST. CLAIR	27	24
CONTRACT NO. 76U73				
ILLINOIS FED. AID PROJECT				



SN 082-0159 DECK PLAN

LEGEND

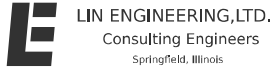
-  Deck Slab Repair (Partial)
-  Deck Slab Repair (Full Depth)
- sf Square Feet

Note:
Repair areas shown are estimated. The Engineer shall document actual locations of repairs on as-built plans.

BILL OF MATERIAL

ITEM	UNIT	TOTAL
Deck Slab Repair (Partial)	Sq. Yd.	164
Deck Slab Repair (Full Depth, Type II)	Sq. Yd.	29

MODEL: Br Sheet Consultant
FILE NAME: E:\2021-8\Struct\CADD (ORD)\CADD_Sheets\0820159-76U73-002-DeckPlan.dgn



USER NAME = Mike Haley	DESIGNED - MTH	REVISED -
	DRAWN - SJH	REVISED -
PLOT SCALE = \$SCALE\$	CHECKED - CL	REVISED -
PLOT DATE = 11/25/2025	CHECK DATE - 10/2025	REVISED -

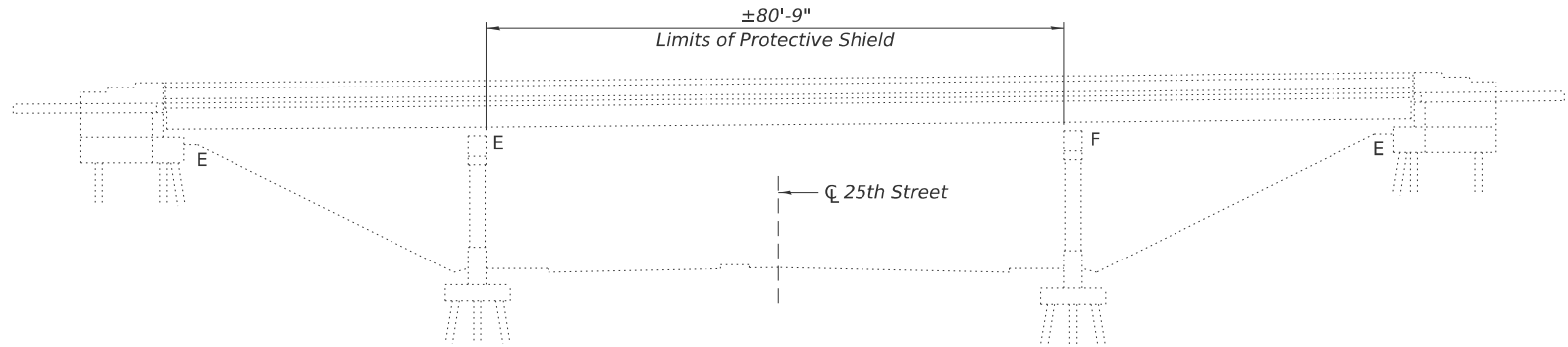
STATE OF ILLINOIS
DEPARTMENT OF TRANSPORTATION

DECK REPAIR PLAN
STRUCTURE NO. 082-0159

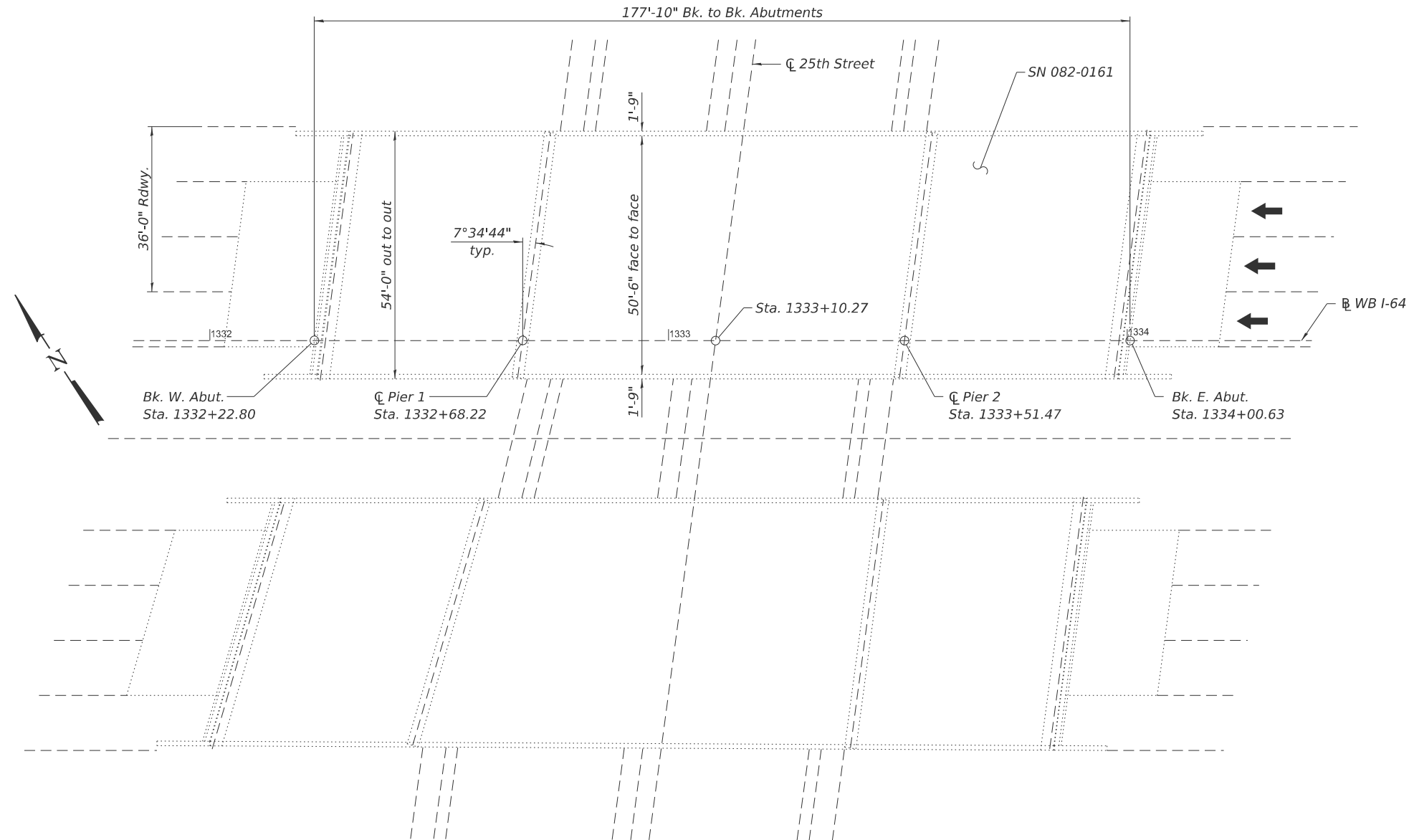
SHEET 2 OF 2 SHEETS

F.A.I. RTE.	SECTION	COUNTY	TOTAL SHEETS	SHEET NO.
64	82-1RS-2, 82-(1,2)BDR-1	ST. CLAIR	27	25
CONTRACT NO. 76U73				
ILLINOIS FED. AID PROJECT				

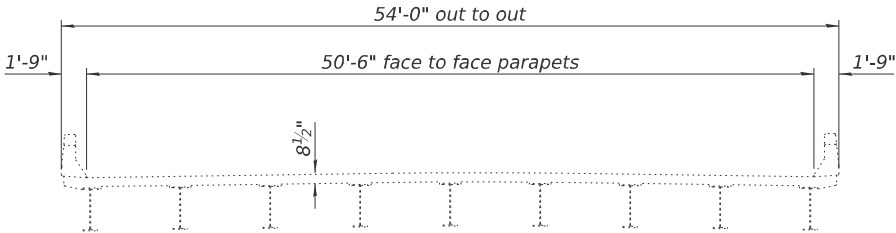
Existing Structure: SN 082-0161 built in 1974 as FAI Rte. 64, Section 82-2HB. The structure is a three span bridge with concrete deck on steel beams measuring 177'-10" back to back abutments, 54'-0" out to out, with 7°34'44" left ahead skew. The substructure consists of concrete pile supported stub abutments and multi-column piers on timber piles.



ELEVATION



PLAN



WB CROSS SECTION
(Looking East)

GENERAL NOTES

1. Prior to pouring the new concrete patches, all heavy or loose rust, loose mill scale, and other loose detrimental foreign material shall be removed from the surfaces in contact with concrete (SSPC-SP3 standards). Tightly adhered paint may remain unless otherwise noted. Removal shall be accomplished by methods that will not damage the steel and the cost will be paid for according to Article 109.04 of the Standard Specifications.
2. Plan dimensions and details relative to the existing structure have been taken from existing plans are subject to nominal construction variations. The Contactor shall field verify existing dimensions and details affecting new construction and make necessary approved adjustments prior to construction or ordering of materials. Such variations shall not be cause for additional compensation for a change in scope of the work, however, the Contractor will be paid for the quantity actually furnished at the unit price bid for the work.
3. Protective Coat shall only be applied to new concrete.

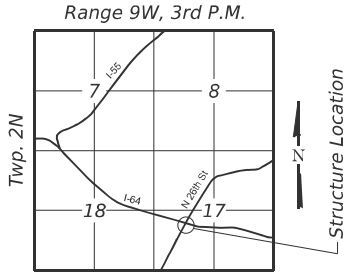
TOTAL BILL OF MATERIAL

ITEM	UNIT	TOTAL
Protective Shield	Sq. Yd.	479
Protective Coat	Sq. Yd.	219
Deck Slab Repair (Partial)	Sq. Yd.	202
Deck Slab Repair (Full Depth, Type II)	Sq. Yd.	17



Michael T. Haley
Licensed Structural Engineer
State of Illinois No. 081-005991
Expires 11/30/2026

11/25/2025
Date



GENERAL PLAN AND ELEVATION
WB I-64 OVER 25TH STREET

F.A.I. RTE. 64 - SEC. 82-1RS-2, 82-(1,2)BDR-1

ST. CLAIR COUNTY

STATION 1333+10.27

STRUCTURE NO. 082-0161

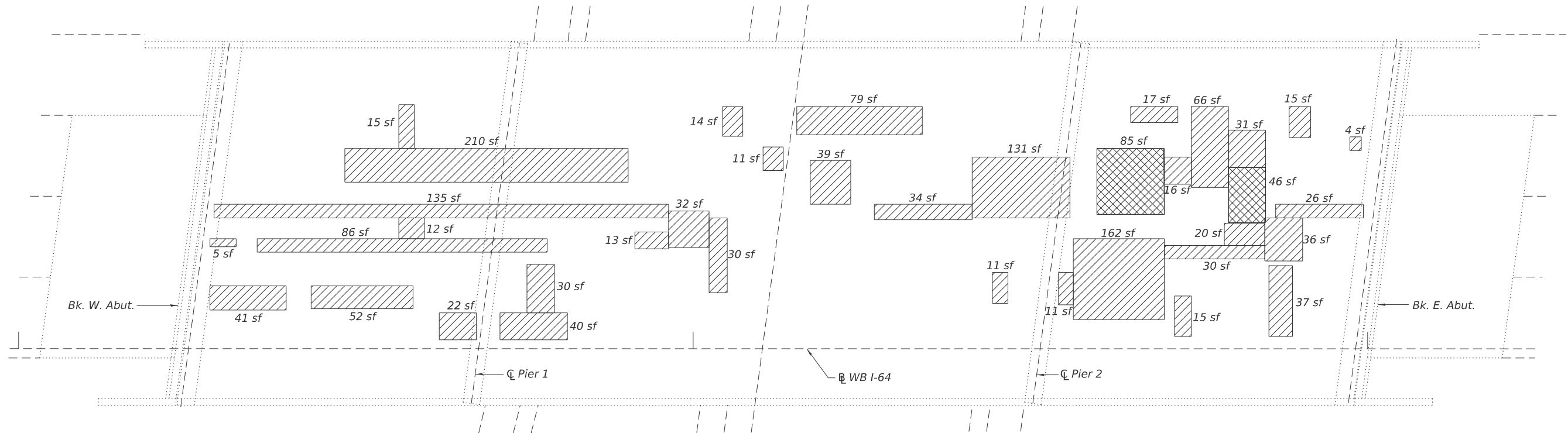


USER NAME = mhale	DESIGNED - MTH	REVISED -
	DRAWN - SJH	REVISED -
PLOT SCALE = \$SCALE\$	CHECKED - CL	REVISED -
PLOT DATE = 12/30/2025	CHECK DATE - 10/2025	REVISED -

STATE OF ILLINOIS
DEPARTMENT OF TRANSPORTATION

SHEET 1 OF 2 SHEETS

F.A.I. RTE.	SECTION	COUNTY	TOTAL SHEETS	SHEET NO.
64	82-1RS-2, 82-(1,2)BDR-1	ST. CLAIR	27	26
CONTRACT NO. 76U73				
ILLINOIS FED. AID PROJECT				



SN 082-0161 DECK PLAN

LEGEND

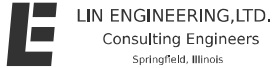
- Deck Slab Repair (Partial)
- Deck Slab Repair (Full Depth)
- sf Square Feet

Note:
Repair areas shown are estimated. The Engineer shall document actual locations of repairs on as-built plans.

BILL OF MATERIAL

ITEM	UNIT	TOTAL
Deck Slab Repair (Partial)	Sq. Yd.	202
Deck Slab Repair (Full Depth, Type II)	Sq. Yd.	17

MODEL: Br. Sheet Consultant
FILE NAME: E:\2021-8\Struct\CADD (ORD)\CADD_Sheets\0820161-76U73-002-DeckPlan.dgn



USER NAME = Mike Haley	DESIGNED - MTH	REVISED -
	DRAWN - SJH	REVISED -
PLOT SCALE = \$SCALE\$	CHECKED - CL	REVISED -
PLOT DATE = 11/25/2025	CHECK DATE - 10/2025	REVISED -

STATE OF ILLINOIS
DEPARTMENT OF TRANSPORTATION

DECK REPAIR PLAN
STRUCTURE NO. 082-0161

SHEET 2 OF 2 SHEETS

F.A.I. RTE.	SECTION	COUNTY	TOTAL SHEETS	SHEET NO.
64	82-1RS-2, 82-(1,2)BDR-1	ST. CLAIR	27	27
CONTRACT NO. 76U73				
ILLINOIS FED. AID PROJECT				