

STATE OF ILLINOIS
DEPARTMENT OF TRANSPORTATION

F.A.P. RTE.	SECTION	COUNTY	TOTAL SHEETS	SHEET NO.
322	(28,29-2)RS-1	MARION	22	1
		ILLINOIS	CONTRACT NO. 76U40	

FOR INDEX OF SHEETS, SEE SHEET NO. 2

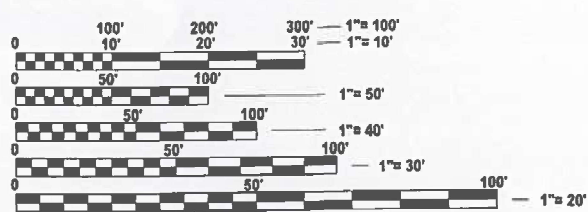
PROPOSED
HIGHWAY PLANS

FAP 322 (US ROUTE 51)
SECTION (28,29-2)RS-1
PROJECT NHPP-NHDK(340)
DESIGNED OVERLAY RESURFACING
MARION COUNTY
C-98-092-25

TRAFFIC DATA:

FROM END PROJECT TO RED STRIPE RD.
2023 ADT=3900
MU=6.4% SU=5.5%

FROM RED STRIPE RD. TO BEGIN PROJECT
2023 ADT= 4050
2026 ADT= 4100 (ESTIMATED)
2046 ADT= 4500 (ESTIMATED)
MU= 6.2% SU=6.2%

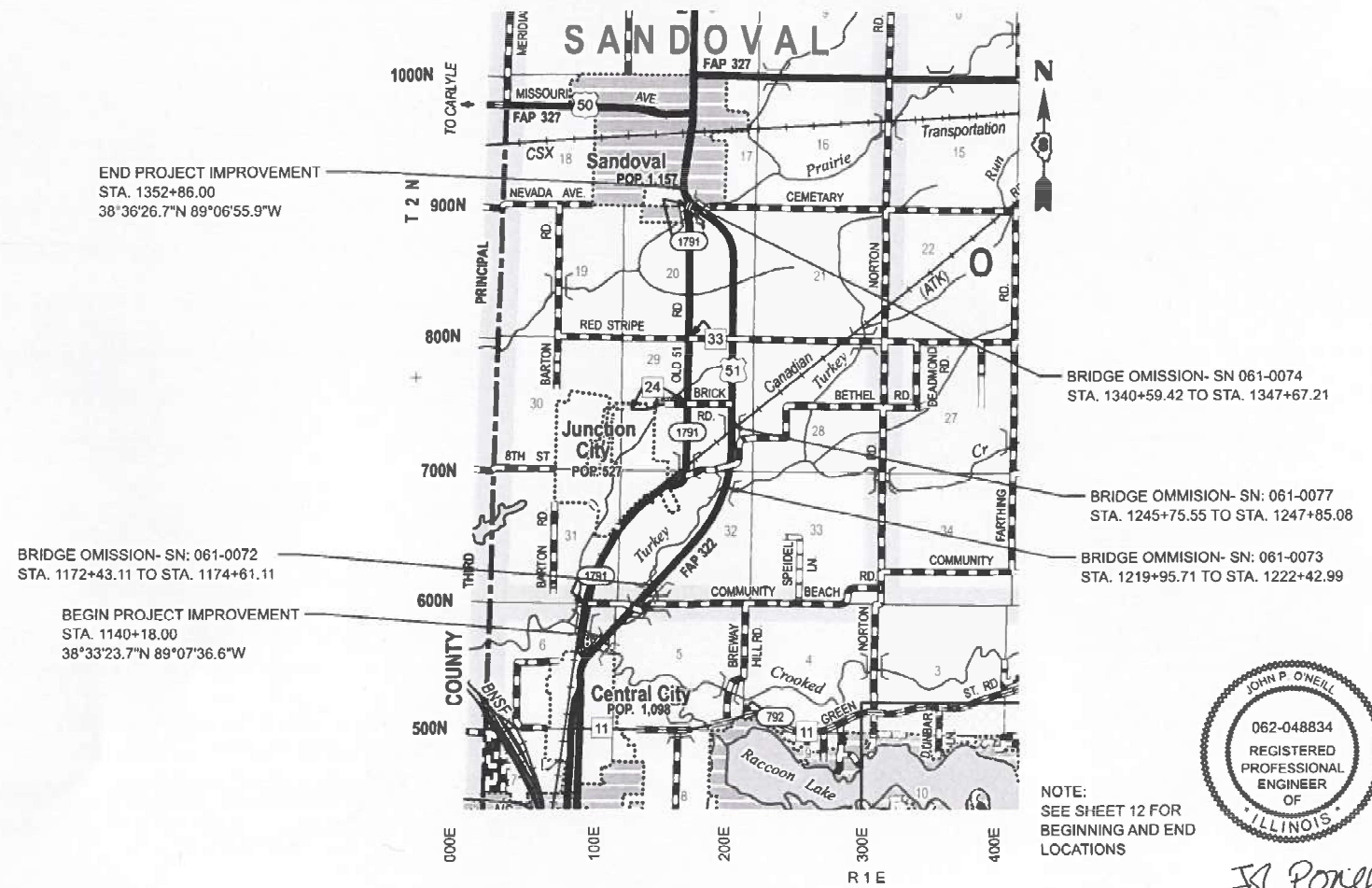


FULL SIZE PLANS HAVE BEEN PREPARED USING STANDARD
ENGINEERING SCALES. REDUCED SIZED PLANS WILL NOT
CONFORM TO STANDARD SCALES. IN MAKING MEASUREMENTS
ON REDUCED PLANS, THE ABOVE SCALES MAY BE USED.

J.U.L.I.E.
JOINT UTILITY LOCATION INFORMATION FOR EXCAVATION
1-800-892-0123
OR 811

PROJECT ENGINEER: CHERYL KEPLAR
PROJECT MANAGER: BRANDON HUMPHREYS

B BLA, Inc.
CONTRACT NO. 76U40

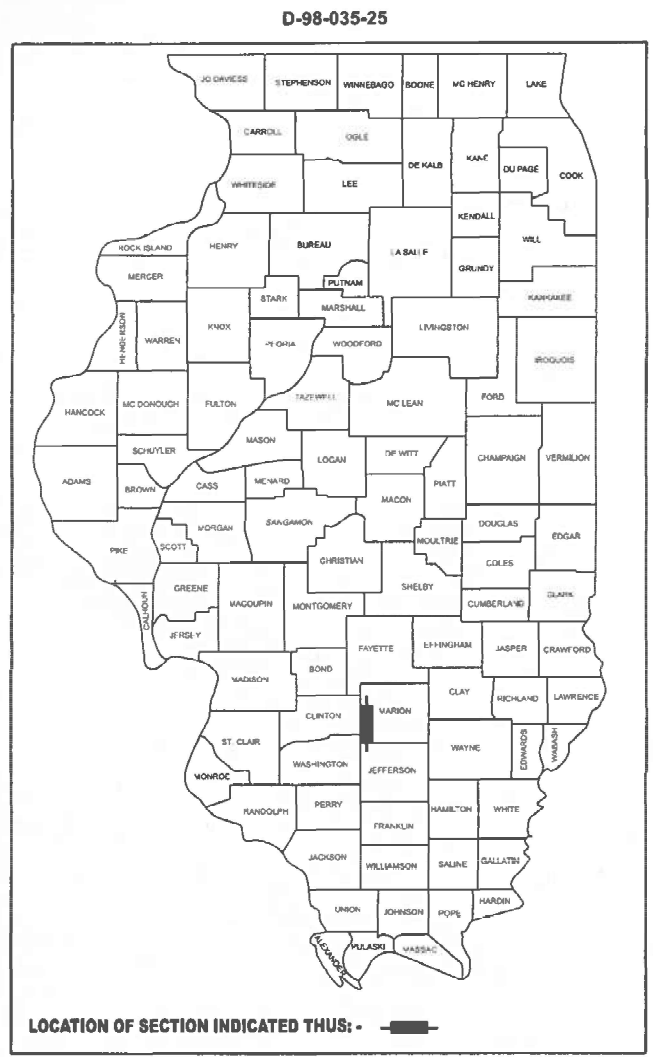


NOTE:
SEE SHEET 12 FOR
BEGINNING AND END
LOCATIONS



12-03-2025 DATE
JOHN
O'NEILL
BLA, INC.
NO.: 062-048834
EXP.: 11-30-2025
APPLY TO SHEETS:
1-22

LOCATION MAP
NOT TO SCALE
GROSS LENGTH = 21,168 FT. = 4.01 MILES
NET LENGTH = 20,385 FT. = 3.86 MILES



STATE OF ILLINOIS
DEPARTMENT OF TRANSPORTATION

SUBMITTED Dec 15 2025

[Signature] REGIONAL ENGINEER

January 23, 2026

[Signature] ENGINEER OF DESIGN AND ENVIRONMENT

January 23, 2026

[Signature] DIRECTOR OF HIGHWAYS PROJECT IMPLEMENTATION

PRINTED BY THE AUTHORITY
OF THE STATE OF ILLINOIS

INDEX OF SHEETS

1	COVER SHEET
2	INDEX OF SHEETS, HIGHWAY STANDARDS, GENERAL NOTES, AND COMMITMENTS
3-5	SUMMARY OF QUANTITIES
6-7	TYPICAL SECTIONS
8-11	SCHEDULE OF QUANTITIES
12	LOCATION MAP
13-15	TRANSITION DETAILS
16-20	GUARDRAIL DETAILS
21-22	DISTRICT 8 DETAILS

HIGHWAY STANDARDS

000001-09	STANDARD SYMBOLS, ABBREBIATIONS AND PATTERNS
001001-02	AREAS OF REINFORCEMENT BARS
001006	DECIMAL OF AN INCH AND OF A FOOT
442201-04	CLASS C AND D PATCHES
482011-03	HMA SHOULDER STRIPS WITH RESURFACING OR WIDING & RESURFACING PROJECTS
606001-09	CONCRETE CURB TYPE B AND COMBINATION CONCRETE CURB AND GUTTER
630001-13	STEEL PLATE BEAM GUARDRAIL
630301-09	SHOULDER WIDENING FOR TYPE 1 GUARDRAIL TERMINALS
631031-18	TRAFFIC BARRIER TERMINAL TYPE 6
701201-05	LANE CLOSURE, 2L 2W, DAY ONLY 45MPH OR MORE
701301-04	LANE CLOSURE, 2L 2W, SHORT TIME OPERATIONS
701306-04	LANE CLOSURE, 2L 2W, SLOW MOVING OPERATIONS DAY ONLY 45MPH OR MORE
701326-04	LANE CLOSURE, 2L 2W, PAVEMENT WIDENING 45MPH OR MORE
701336-07	LANE CLOSURE, 2L 2W, WORK AREAS IN SERIES 45MPH OR MORE
701501-06	URBAN LANE CLOSURE, 2L 2W, UNDIVIDED
701601-09	URBAN LANE CLOSURE MULTILANE, 1W 2W WITH NONTRAVERSABLE MEDIAN
701901-11	TRAFFIC CONTROL DEVICES
780001-05	TYPICAL PAVEMENT MARKINGS
781001-04	TYPICAL APPLICATIONS RAISED REFLECTIVE PAVEMENT MARKERS
782006-01	GUARDRAIL AND BARRIER WALL REFLECTOR MOUNTING DETALS

GENERAL NOTES

1. UTILITIES KNOWN TO HAVE FACILITIES WITHIN THE PROJECT AREA ARE AS FOLLOWS:

a. AMEREN ILLINOIS GAS & ELECTRIC (AERIAL AND BURIED)

b. AT&T ILLINOIS COMMUNICATIONS (AERIAL AND BURIED)

c. CITY OF CENTRALIA WATER & SANITARY SEWER (BURIED)

d. CHARTER COMMUNICATIONS, INC. COMMUNICATIONS (AERIAL AND BURIED)

e. CLEARWAVE FIBER LLC COMMUNICATIONS (AERIAL AND BURIED)

f. COUNTRYMARK COOPERATIVE, LLP PIPELINE (BURIED)

g. FRONTIER COMMUNICATIONS COMMUNICATIONS (AERIAL AND BURIED)

h. METRO COMMUNICATIONS (AERIAL AND BURIED)

i. VILLAGE OF ODIN WATER & SANITARY SEWER (BURIED)

j. VILLAGE OF SANDOVAL -- WATER & SANITARY SEWER (BURIED)

k. WINDSTREAM KDL, INC. COMMUNICATIONS (AERIAL AND BURIED)
2. NO SURVEY WAS PERFORMED FOR THIS PROJECT, AND THE PLANS WERE CREATED USING BING MAPS.
3. NO OVERNIGHT LANE CLOSURES WILL BE PERMITTED.
4. THE USE OF VIBRATORY ROLLERS WILL NOT BE PERMITTED FOR THIS PROJECT. THIS DOES NOT RELIEVE THE CONTRACTOR OF DENSITY REQUIREMENTS FOR THE CONSTRUCTION OF THE BITUMINOUS PAVEMENTS AS SPECIFIED IN SECTIONS 406 & 407 OF THE STANDARD SPECIFICATIONS.
5. THE PROPOSED PAVEMENT MARKING SHALL MATCH THE LOCATIONS OF THE EXISTING PAVEMENT MARKING, OR AS DIRECTED BY THE ENGINEER.
6. 2 CHANGEABLE MESSAGE BOARDS SHALL BE REQUIRED FOR THIS PROJECT. THEY SHALL BE PLACED 2 WEEKS PRIOR TO ANY LANE CLOSURES. THE CHANGEABLE MESSAGE SHALL BE PLACED ALONG US ROUTE 51 AT THE DIRECTION OF THE ENGINEER.
7. ONLY SHORT TERM PAVEMENT MARKING REMOVAL FROM THE FINAL SURFACE SHALL BE PAID FOR AS "SHORT TERM PAVEMENT MARKING REMOVAL."
8. THE TEMPORARY RAMPS USED ON ALL SIDE STREETS AND ENTRANCES SHALL BE 2 OR 3 FEET IN LENGTH SO AS NOT TO INTERFERE WITH THE THRU TRAFFIC LANES.
9. THE CONTRACTOR SHALL BE AWARE THAT THERE ARE MANHOLES AND INLETS LOCATED WITHIN THE DESIGN OVERLAY AREAS. CARE SHALL BE TAKEN IN THESE LOCATIONS DURING OVERLAY OPERATIONS.

GENERAL NOTES (CONT.)

10. THE CONTRACTOR SHALL PROVIDE POSITIVE AND ADEQUATE DRAINAGE AT ALL TIMES. THIS MAY INCLUDE, BUT IS NOT LIMITED TO, REPLACEMENT OR RECONSTRUCTION OF EXISTING DRAINAGE STRUCTURES THAT HAVE BEEN DAMAGED OR REMOVED, REGRADING, PLUGGING ABANDONED PIPES, OR OTHER ACTIVITIES REQUIRED BY THE ENGINEER.
11. ALL AREAS DISTURBED FOR ANY REASON SHALL BE PERMANENTLY SEEDED AS DIRECTED BY THE ENGINEER. ALL AREAS DISTURBED BY THE CONTRACTOR OUTSIDE THE PROPOSED CONSTRUCTION LIMITS SHALL BE SEEDED AT THE CONTRACTOR'S EXPENSE.
12. THE USE OF A MATERIAL TRANSFER DEVICE SHALL BE PERMITTED FOR THE PAVING OPERATIONS FOR THIS PROJECT. THE MATERIAL TRANSFER DEVICE MAY OPERATE IN AN UNLOADED CONDITION WITH A MAXIMUM GROSS WEIGHT OF 40 TONS ON SN 061-0072, SN 061-0073, SN 061-0074, SN 061-0075, SN 061-0076, AND SN 061-0077.

COMMITMENTS

NONE.

HOT-MIX ASPHALT MIXTURE REQUIREMENTS

MIXTURE USE(S):	SURFACE	BINDER	SHOULDER SURFACE	SHOULDER BINDER	SIDE STREET SURFACE	SIDE STREET BINDER	CLASS D PATCH, 10"	PARTIAL DEPTH PATCHING
AC/PG	PG 64-22	PG 64-22	PG 64-22	PG 64-22	PG 64-22	PG 64-22	PG 64-22	PG 64-22
RAP % (MAX)	SEE SPECIAL PROVISION	SEE SPECIAL PROVISION	SEE SPECIAL PROVISION	SEE SPECIAL PROVISION	SEE SPECIAL PROVISION	SEE SPECIAL PROVISION	SEE SPECIAL PROVISION	SEE SPECIAL PROVISION
DESIGN AIR VOIDS:	4.0% @ Ndes=70	4.0% @ Ndes=70	4.0% @ Ndes=30	4.0% @ Ndes=30	4.0% @ Ndes=70	4.0% @ Ndes=70	4.0% @ Ndes=50	4.0% @ Ndes=70
MIXTURE COMPOSITION (GRADATION MIXTURE)	IL-9.5	IL-19.0	IL-9.5L	IL-19.0L	IL-9.5	IL-19.0	IL-19.0	IL-9.5
FRICTION AGGREGATE	MIXTURE "D"	MIXTURE "B"	MIXTURE "C"	-	MIXTURE "D"	MIXTURE "B"	-	MIXTURE "D"
QUALITY MANAGEMENT PROGRAM	QCP	QCP	QC/QA	QC/QA	QC/QA	QC/QA	QC/QA	QC/QA
MATERIAL TRANSFER DEVICE (REQUIRED?)	YES	YES	NO	NO	NO	NO	NO	NO

PLAN QUANTITIES FOR BITUMINOUS CONCRETE SURFACE COURSE ITEMS ARE CALCULATED USING A UNIT WEIGHT OF 112 LB/ SQ YD/ IN.

MODEL: Default
FILE NAME: W:\191+210 IDOT_214043_TOI_US51 Overlay\CADD Sheets\us8_d-98-035-25_general notes.dgn

MODEL: Default
FILE NAME: W:\191-210 IDOT 214043_TO1_US51 Overlay\CADD Sheets\48_d-98-035-25_sq.dgn

NHPP 80% FED 20% STATE					
CODE NO.	ITEM	UNIT OF MEASURE	TOTAL	ROADWAY	ROADWAY
				URBAN	RURAL
				0005	0005
20201200	REMOVAL AND DISPOSAL OF UNSUITABLE MATERIAL	CUYD	100	50	50
35101600	AGGREGATE BASE COURSE, TYPE B 4"	SQ YD	113	-	113
40600405	MATERIAL TRANSFER DEVICE	TON	12,245	6,425	5,820
40603085	HOT-MIX ASPHALT BINDER COURSE, IL-19.0, N70	TON	7,797	4,059	3,738
40604062	HOT-MIX ASPHALT SURFACE COURSE, IL-9.5, MIX "D", N70	TON	5,198	2,706	2,492
40600290	BITUMINOUS MATERIALS (TACK COAT)	POUND	87,191	45,310	41,881
40600370	LONGITUDINAL JOINT SEALANT	FOOT	21,865	11,472	10,393
40600982	HOT-MIX ASPHALT SURFACE REMOVAL - BUTT JOINT	SQ YD	155	61	94
40600985	PORTLAND CEMENT CONCRETE SURFACE REMOVAL - BUTT JOINT	SQ YD	889	622	267

* SPECIALTY ITEM

NHPP 80% FED 20% STATE					
CODE NO.	ITEM	UNIT OF MEASURE	TOTAL	ROADWAY	ROADWAY
				URBAN	RURAL
				0005	0005
40800050	INCIDENTAL HOT-MIX ASPHALT SURFACING	TON	500	250	250
42001300	PROTECTIVE COAT	SQ YD	113	-	113
44000500	COMBINATION CURB AND GUTTER REMOVAL	FOOT	396	-	396
44201769	CLASS D PATCHES, TYPE III, 10 INCH	SQ YD	64	32	32
44213000	PATCHING REINFORCEMENT	SQ YD	2,236	836	1,400
44213200	SAW CUTS	FOOT	4,044	1,788	2,256
44213204	TIE BARS 3/4"	EACH	685	301	384
48101498	AGGREGATE SHOULDERS, TYPE B 4"	SQ YD	9,915	5,237	4,678
48102100	AGGREGATE WEDGE SHOULDER, TYPE B	TON	2,321	1,108	1,213
48203100	HOT-MIX ASPHALT SHOULDERS	TON	8,163	4,283	3,880
60255500	MANHOLES TO BE ADJUSTED	EACH	1	-	1
60260100	INLETS TO BE ADJUSTED	EACH	1	-	1
60605000	COMBINATION CONCRETE CURB AND GUTTER, TYPE B-6.24	FOOT	396	-	396
63000001	STEEL PLATE BEAM GUARDRAIL, TYPE A, 6 FOOT POSTS	FOOT	1,363	1,150	213
63100085	TRAFFIC BARRIER TERMINAL, TYPE 6	EACH	18	12	6

* SPECIALTY ITEM

REV - MS

MODEL: Default
FILE NAME: W:\191-210 IDOT 214043_TO1_US51 Overlay\CADD Sheets\48_d-98-035-25_soa.dgn

NHPP 80% FED 20% STATE					
CODE NO.	ITEM	UNIT OF MEASURE	TOTAL	ROADWAY	ROADWAY
				URBAN	RURAL
				0005	0005
63100167	TRAFFIC BARRIER TERMINAL, TYPE 1(SPECIAL) TANGENT	EACH	18	12	6
63200310	GUARDRAIL REMOVAL	FOOT	2,702	2,012	690
67000400	ENGINEER'S FIELD OFFICE, TYPE A	CAL MO	7	3.5	3.5
67100100	MOBILIZATION	L SUM	1	0.5	0.5
70100450	TRAFFIC CONTROL AND PROTECTION, STANDARD 701201	L SUM	1	0.5	0.5
70100460	TRAFFIC CONTROL AND PROTECTION, STANDARD 701306	L SUM	1	0.5	0.5
70100500	TRAFFIC CONTROL AND PROTECTION, STANDARD 701326	L SUM	1	0.5	0.5
70100600	TRAFFIC CONTROL AND PROTECTION, STANDARD 701336	L SUM	1	0.5	0.5
70102620	TRAFFIC CONTROL AND PROTECTION, STANDARD 701501	L SUM	1	0.5	0.5
70102630	TRAFFIC CONTROL AND PROTECTION, STANDARD 701601	L SUM	1	0.5	0.5
70107025	CHANGEABLE MESSAGE SIGN	CAL DA	128	64	64
70300100	SHORT TERM PAVEMENT MARKING	FOOT	5,586	2,916	2,670
70300150	SHORT TERM PAVEMENT MARKING REMOVAL	SQ FT	2,973	1,530	1,443
70300241	TEMPORARY PAVEMENT MARKING - LINE 6"- PAINT	FOOT	49,198	25,813	23,385

* SPECIALTY ITEM

NHPP 80% FED 20% STATE					
CODE NO.	ITEM	UNIT OF MEASURE	TOTAL	ROADWAY	ROADWAY
				URBAN	RURAL
				0005	0005
70300281	TEMPORARY PAVEMENT MARKING - LINE 24"- PAINT	FOOT	120	48	72
72501000	TERMINAL MARKER - DIRECT APPLIED	EACH	18	12	6
78000400	THERMOPLASTIC PAVEMENT MARKING - LINE 6"	FOOT	49,198	25,813	23,385
78000650	THERMOPLASTIC PAVEMENT MARKING - LINE 24"	FOOT	120	48	72
78100100	RAISED REFLECTIVE PAVEMENT MARKER	EACH	273	143	130
78200005	GUARDRAIL REFLECTORS, TYPE A	EACH	57	49	8
78300200	RAISED REFLECTIVE PAVEMENT MARKER REMOVAL	EACH	273	143	130
X4210307	WIDE FLANGE BEAM TERMINAL JOINT REPAIR (SPECIAL)	EACH	8	6	2
X4406620	PARTIAL DEPTH REMOVAL, TYPE IV, 2"	SQ YD	9,184	9,184	-
X4406803	PORTLAND CEMENT CONCRETE SURFACE REMOVAL 1/4"	SQ YD	97,180	50,988	46,192
X4420525	CLASS A PATCH - EXPANSION JOINT	FOOT	240	168	72
X4420551	CLASS A PATCHES, TYPE I, 10 INCH (SPECIAL)	SQ YD	32	4	28
X4420553	CLASS A PATCHES, TYPE II, 10 INCH (SPECIAL)	SQ YD	118	24	94
X4420557	CLASS A PATCHES, TYPE III, 10 INCH (SPECIAL)	SQ YD	89	36	53
X4420559	CLASS A PATCHES, TYPE IV, 10 INCH (SPECIAL)	SQ YD	1,997	772	1,225

* SPECIALTY ITEM

REV - MS



USER NAME	= malvarez	DESIGNED	-	REVISED	-
		DRAWN	-	REVISED	-
		CHECKED	-	REVISED	-
PLOT DATE	= 12/2/2025	DATE	-	REVISED	-

STATE OF ILLINOIS
DEPARTMENT OF TRANSPORTATION

SUMMARY OF QUANTITIES

SCALE: N/A	SHEET 2	OF 3	SHEETS	STA. N/A	TO STA. N/A
------------	---------	------	--------	----------	-------------

F.A.P. RTE.	SECTION	COUNTY	TOTAL SHEETS	SHEET NO.
322	(28, 29-2) RS-1	MARION	22	4
CONTRACT NO. 76U40				
ILLINOIS FED. AID PROJECT				

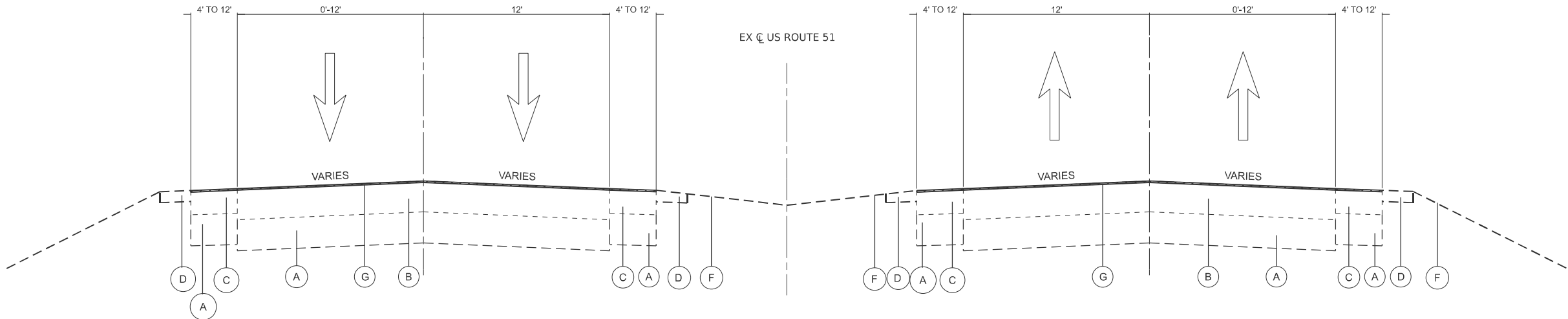
NHPP
80% FED
20% STATE

CODE NO.	ITEM	UNIT OF MEASURE	TOTAL	ROADWAY	ROADWAY
				URBAN	RURAL
				0005	0005
X4421000	PARTIAL DEPTH PATCHING	TON	1,029	1,029	-
Z0013798	CONSTRUCTION LAYOUT	L SUM	1	0.5	0.5

* SPECIALTY ITEM

 BLA, Inc.	USER NAME = malvarez	DESIGNED -	REVISED -	<div style="text-align: center;"> STATE OF ILLINOIS DEPARTMENT OF TRANSPORTATION </div>	<div style="text-align: center;"> SUMMARY OF QUANTITIES </div>				F.A.P. RTE.	SECTION	COUNTY	TOTAL SHEETS	SHEET NO.
		DRAWN -	REVISED -						322	(28, 29-2) RS-1	MARION	22	5
		CHECKED -	REVISED -		CONTRACT NO. 76U40								
	PLOT DATE = 12/2/2025	DATE -	REVISED -		SCALE: N/A	SHEET 3	OF 3	SHEETS	STA. N/A	TO STA. N/A	ILLINOIS	FED. AID PROJECT	

MODEL: Default
FILE NAME: W:\191+210 IDOT_214043_TO1_US51 Overlay\CADD Sheets\48_d-98-035-25_typical sections.dgn

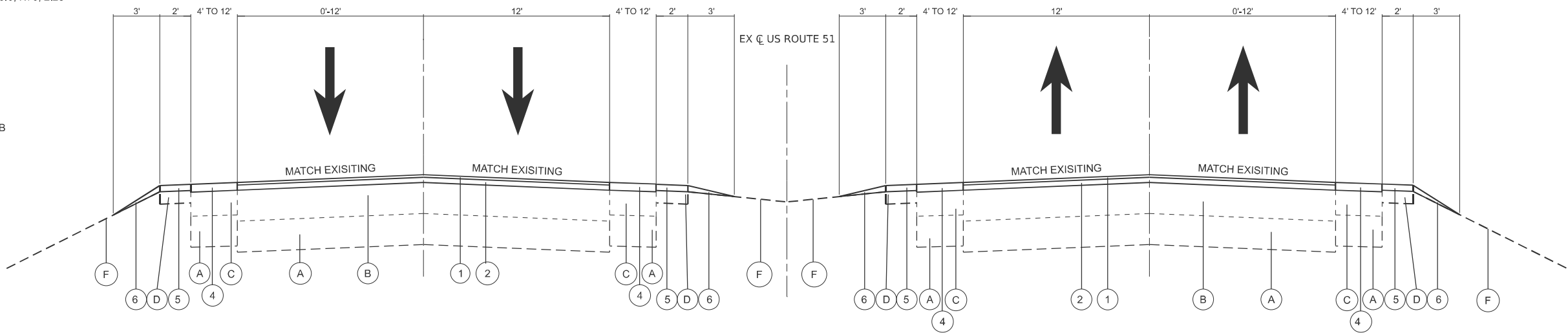


EXISTING TYPICAL SECTION

STA. 1140+18.00 TO STA. 1155+98.08 (US ROUTE 51)

LEGEND

- (A) EXISTING SUBGRADE
- (B) EXISTING PORTLAND CEMENT CONCRETE PAVEMENT
- (C) EXISTING HOT-MIX ASPHALT SHOULDER
- (D) EXISTING AGGREGATE SHOULDER
- (E) EXISTING GUARDRAILS (TO BE REMOVED)
- (F) EXISTING GROUND
- (G) PORTLAND CEMENT CONCRETE SURFACE REMOVAL 1/4"
- (1) PROPOSED HOT-MIX ASPHALT SURFACE COURSE, IL-9.5, MIX "D", N70, 1.5"
- (2) PROPOSED HOT-MIX ASPHALT BINDER COURSE, IL-19.0, N70, 2.25"
- (3) PROPOSED GUARDRAIL
- (4) PROPOSED HOT-MIX ASPHALT SHOULDERS
- (5) PROPOSED AGGREGATE SHOULDERS, TYPE B 4"
- (6) PROPOSED AGGREGATE WEDGE SHOULDER, TYPE B



PROPOSED TYPICAL SECTION

STA. 1140+18.00 TO STA. 1155+98.08 (US ROUTE 51)



USER NAME = malvarez	DESIGNED -	REVISED -
	DRAWN -	REVISED -
	CHECKED -	REVISED -
PLOT DATE = 12/10/2025	DATE -	REVISED -

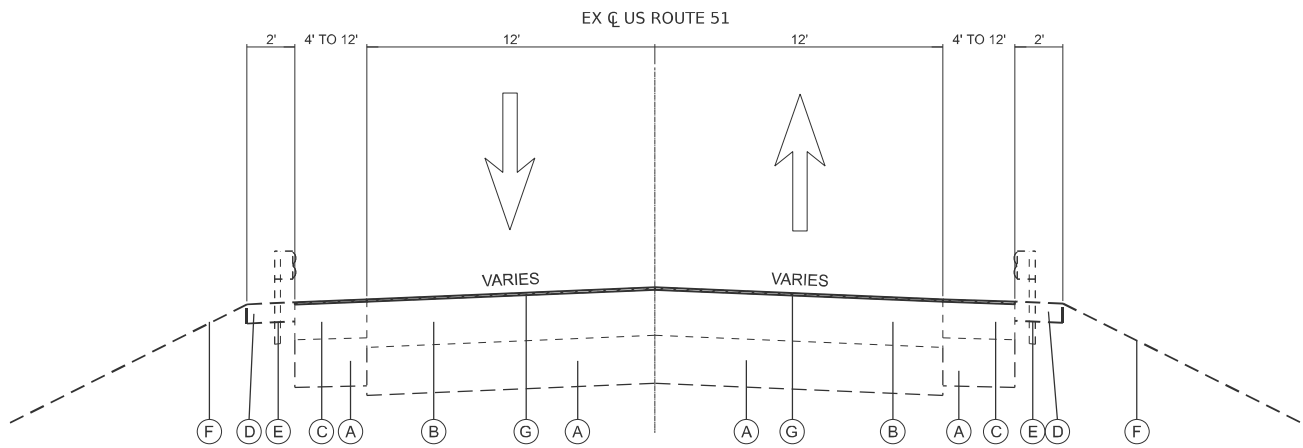
STATE OF ILLINOIS
DEPARTMENT OF TRANSPORTATION

TYPICAL SECTIONS

SCALE: NTS SHEET 1 OF 2 SHEETS STA. N/A TO STA. N/A

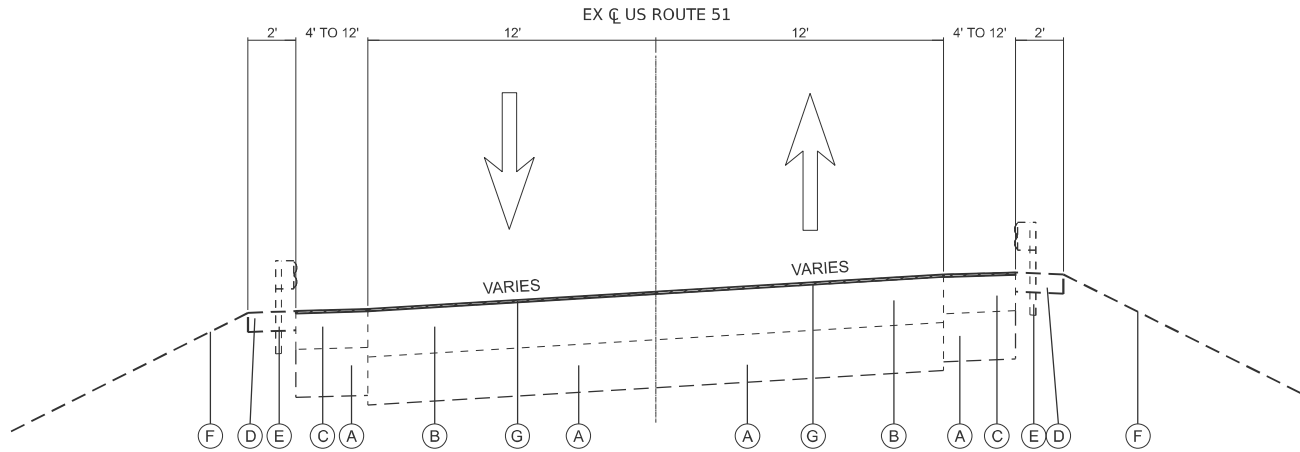
F.A.P. RTE.	SECTION	COUNTY	TOTAL SHEETS	SHEET NO.
322	(28,29-2)RS-1	MARION	22	6
CONTRACT NO. 76U40				
ILLINOIS FED. AID PROJECT				

MODEL: Default
FILE NAME: W:\191+210 IDOT_214043_TO1_US51 Overlay\CADD Sheets\48_d-98-035-25 Typical sections.dgn



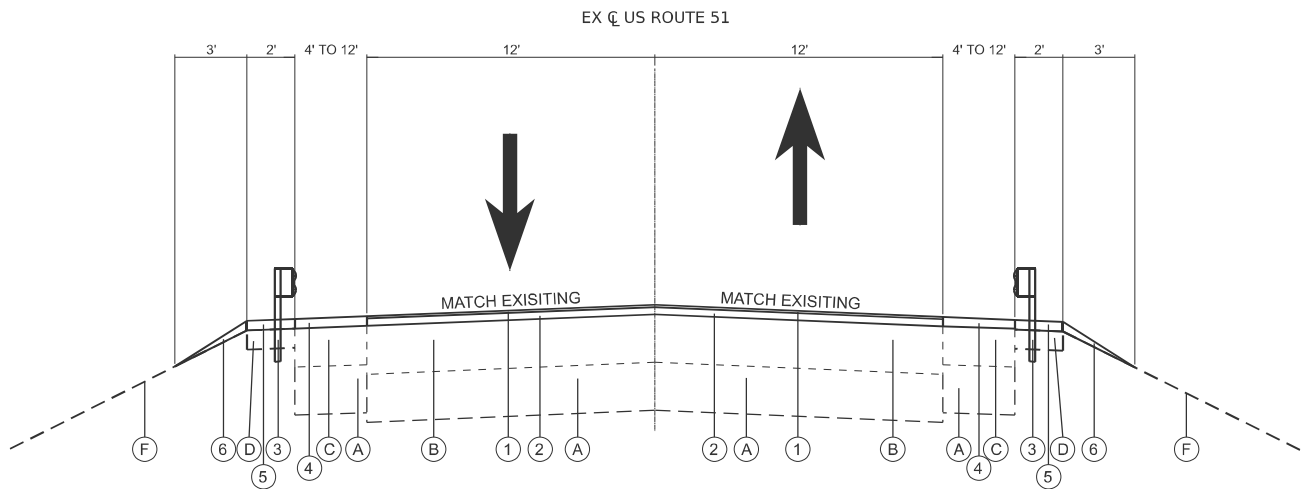
EXISTING TYPICAL SECTION

STA. 1155+99.09 TO 1198+64.77; STA. 1239+26.04 TO STA. 1317+10.75; STA. 1336+80.86 TO STA. 1344+14.33; STA. 1351+89.44 TO STA. 1352+86.00 (US ROUTE 51)
BRIDGE OMISSIONS: STA. 1172+43.11 TO STA. 1174+61.11; STA. 1245+75.55 TO STA. 1247+85.08; STA. 1340+59.42 TO STA. 1341+67.21



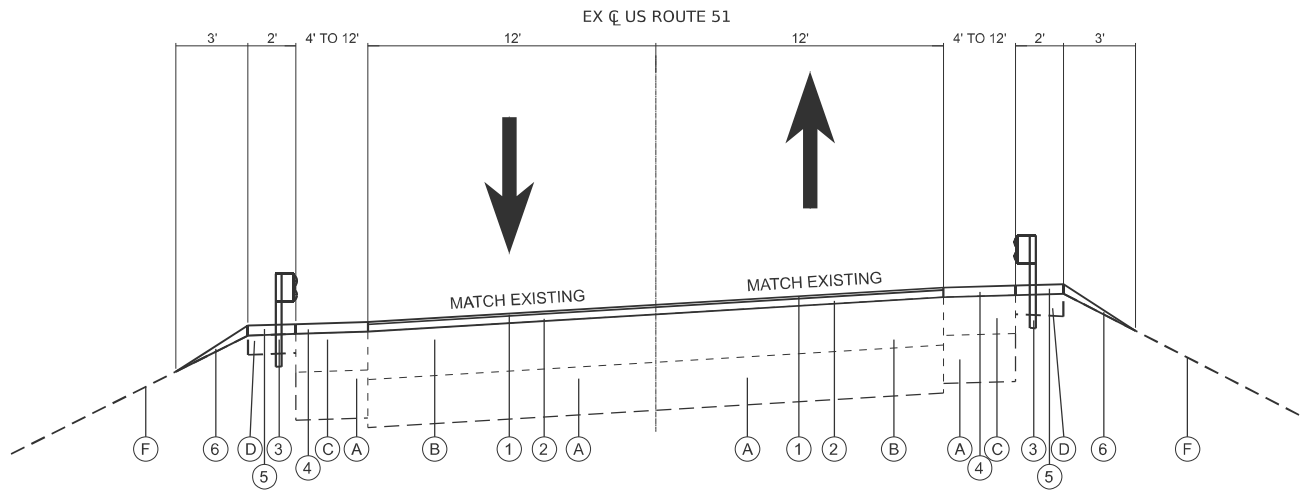
EXISTING TYPICAL SECTION

STA. 1198+64.77 TO STA. 1239+26.04; STA. 1317+10.75 TO STA. 1336+80.86; STA. 1344+14.33 TO STA. 1351+89.44 (US ROUTE 51)
BRIDGE OMISSIONS: STA. 1219+95.71 TO STA. 1222+42.99



PROPOSED TYPICAL SECTION

STA. 1155+99.09 TO 1198+64.77; STA. 1239+26.04 TO STA. 1317+10.75; STA. 1336+80.86 TO STA. 1344+14.33; STA. 1351+89.44 TO STA. 1352+86.00 (US ROUTE 51)
BRIDGE OMISSIONS: STA. 1172+43.11 TO STA. 1174+61.11; STA. 1245+75.55 TO STA. 1247+85.08; STA. 1340+59.42 TO STA. 1341+67.21



PROPOSED TYPICAL SECTION

STA. 1198+64.77 TO STA. 1239+26.04; STA. 1317+10.75 TO STA. 1336+80.86; STA. 1344+14.33 TO STA. 1351+89.44 (US ROUTE 51)
BRIDGE OMISSIONS: STA. 1219+95.71 TO STA. 1222+42.99

LEGEND

- | | |
|---|---|
| (A) EXISTING SUBGRADE | (1) PROPOSED HOT-MIX ASPHALT SURFACE COURSE, IL-9.5, MIX "D", N70, 1.5" |
| (B) EXISTING PORTLAND CEMENT CONCRETE PAVEMENT | (2) PROPOSED HOT-MIX ASPHALT BINDER COURSE, IL-19.0, N70, 2.25" |
| (C) EXISTING HOT-MIX ASPHALT SHOULDER | (3) PROPOSED GUARDRAIL |
| (D) EXISTING AGGREGATE SHOULDER | (4) PROPOSED HOT-MIX ASPHALT SHOULDERS |
| (E) EXISTING GUARDRAILS (TO BE REMOVED) | (5) PROPOSED AGGREGATE SHOULDERS, TYPE B 4" |
| (F) EXISTING GROUND | (6) PROPOSED AGGREGATE WEDGE SHOULDER, TYPE B |
| (G) PORTLAND CEMENT CONCRETE SURFACE REMOVAL 1/4" | |

NOTE: SEE PLAN DETAILS FOR
PROPOSED GUARDRAIL LOCATIONS



USER NAME = malvarez	DESIGNED -	REVISED -
	DRAWN -	REVISED -
	CHECKED -	REVISED -
PLOT DATE = 12/10/2025	DATE -	REVISED -

STATE OF ILLINOIS
DEPARTMENT OF TRANSPORTATION

TYPICAL SECTIONS

SCALE: NTS SHEET 2 OF 2 SHEETS STA. N/A TO STA. N/A

F.A.P. RTE.	SECTION	COUNTY	TOTAL SHEETS	SHEET NO.
322	(28,29-2)RS-1	MARION	22	7
CONTRACT NO. 76U40				
ILLINOIS FED. AID PROJECT				

MODEL: Default
FILE NAME: W:\191+210 IDOT_214043_TOI_US51 Overlay\CADD Sheets\us8_d-98-035-25_schedule of quantities.dgn

PAVEMENT REMOVAL SCHEDULE						
STATION	STATION	LOCATION	STREET NAME LOCATED WITHIN STATION RANGE	PORTLAND CEMENT CONCRETE SURFACE REMOVAL 1/4"	PORTLAND CEMENT CONCRETE SURFACE REMOVAL - BUTT JOINT	HOT-MIX ASPHALT SURFACE REMOVAL - BUTT JOINT
				(SQ YD)	(SQ YD)	(SQ YD)
1141+18.00	1155+98.09	LT/RT	-	13,156	178	-
1155+98.09	1162+24.00	LT/RT	COMMUNITY BEACH ROAD	2,782	-	34
1162+24.00	1172+43.11	LT/RT	-	4,529	89	-
1172+43.11	1174+61.11	BRIDGE OMISSION		-	-	-
1174+61.11	1219+95.71	LT/RT	-	20,154	178	-
1219+95.71	1222+42.99	BRIDGE OMISSION		-	-	-
1222+42.99	1233+33.13	LT/RT	BETHEL ROAD	4,845	89	27
1233+33.13	1245+75.55	LT/RT	-	5,522	89	-
1245+75.55	1247+85.08	BRIDGE OMISSION		-	-	-
1247+85.08	1258+03.99	LT/RT	BRINK ROAD	4,528	89	12
1258+03.99	1284+55.93	LT/RT	RED STRIPE ROAD	11,786	-	34
1284+55.93	1339+46.77	LT/RT	CEMETERY ROAD	24,404	-	19
1339+46.77	1340+59.42	LT/RT	-	501	89	-
1340+59.42	1341+67.21	BRIDGE OMISSION		-	-	-
1341+67.21	1346+82.75	LT/RT	OLD 51 ROAD	2,291	89	13
1346+82.75	1352+86.00	LT/RT	TEXAS AVENUE	2,681	-	16
TOTAL				97,180	889	155

PAVEMENT SCHEDULE										
STATION	STATION	LOCATION	STREET NAME LOCATED WITHIN STATION RANGE	HOT-MIX ASPHALT BINDER COURSE, IL-19.0, N70	HOT-MIX ASPHALT SURFACE COURSE, IL-9.5, MIX "D", N70	HOT-MIX ASPHALT SHOULDERS	AGGREGATE SHOULDERS, TYPE B 4"	AGGREGATE WEDGE SHOULDER, TYPE B	BITUMINOUS MATERIALS (TACK COAT)	LONGITUDINAL JOINT SEALANT
				(TON)	(TON)	(TON)	(SQ YD)	(TON)	(POUND)	(FOOT)
1141+18.00	1155+98.09	LT/RT	-	995	663	1,105	1,355	115	11,249	2,960
1155+98.09	1162+24.00	LT/RT	COMMUNITY BEACH ROAD	327	218	234	278	73	3,316	626
1162+24.00	1172+43.11	LT/RT	-	342	228	380	473	119	3,873	1,019
1172+43.11	1174+61.11	BRIDGE OMISSION		-	-	-	-	-	-	-
1174+61.11	1219+95.71	LT/RT	-	1,524	1,016	1,693	2,055	529	17,231	4,535
1219+95.71	1222+42.99	BRIDGE OMISSION		-	-	-	-	-	-	-
1222+42.99	1233+33.13	LT/RT	BETHEL ROAD	454	303	407	504	127	4,920	1,090
1233+33.13	1245+75.55	LT/RT	-	417	278	464	572	145	4,721	1,242
1245+75.55	1247+85.08	BRIDGE OMISSION		-	-	-	-	-	-	-
1247+85.08	1258+03.99	LT/RT	BRINK ROAD	380	253	380	473	119	4,217	1,019
1258+03.99	1284+55.93	LT/RT	RED STRIPE ROAD	981	654	990	1,179	309	10,873	2,652
1284+55.93	1339+46.77	LT/RT	CEMETERY ROAD	1,892	1,261	2,050	2,440	641	21,330	5,491
1339+46.77	1340+59.42	LT/RT	-	38	25	42	70	13	428	113
1340+59.42	1341+67.21	BRIDGE OMISSION		-	-	-	-	-	-	-
1341+67.21	1346+82.75	LT/RT	OLD 51 ROAD	212	141	192	249	60	2,418	516
1346+82.75	1352+86.00	LT/RT	TEXAS AVENUE	235	157	225	268	70	2,615	603
TOTAL				7,797	5,198	8,163	9,915	2,321	87,191	21,865



USER NAME = malvarez	DESIGNED -	REVISED -
	DRAWN -	REVISED -
	CHECKED -	REVISED -
PLOT DATE = 12/8/2025	DATE -	REVISED -

STATE OF ILLINOIS
DEPARTMENT OF TRANSPORTATION

SCHEDULE OF QUANTITIES

SCALE: N/A	SHEET 1	OF 4	SHEETS	STA. N/A	TO STA. N/A
------------	---------	------	--------	----------	-------------

F.A.P. RTE.	SECTION	COUNTY	TOTAL SHEETS	SHEET NO.
322	(28, 29-2) RS-1	MARION	22	8
		CONTRACT NO. 76U40		
		ILLINOIS	FED. AID PROJECT	

MODEL: Default
FILE NAME: W:\191+210 IDOT_214043_TOI_US51 Overlay\CADD Sheets\8_d-98-035-25_schedule of quantities.dgn

CURB SCHEDULE							
STATION	OFFSET	STATION	OFFSET	AGGREGATE BASE COURSE, TYPE B 4"	COMBINATION CURB AND GUTTER REMOVAL	COMBINATION CONCRETE CURB AND GUTTER, TYPE B-6.24	PROTECTIVE COAT
				(SQ YD)	(FOOT)	(FOOT)	(SQ YD)
1350+25.98	19.65 LT	1352+24.76	65.07 LT	66	229	229	66
1352+54.44	50.18 LT	1352+86.00	16.40 LT	14	50	50	14
1351+67.94	18.15 RT	1352+86.00	15.17 RT	34	117	117	34
TOTAL				113	396	396	113

MILE STATION	LOCATION	INLETS TO BE ADJUSTED
		(EACH)
1352+66.57	RT	1
TOTAL		1

MILE STATION	LOCATION	MANHOLES TO BE ADJUSTED
		(EACH)
1352+36.31	LT	1
TOTAL		1

GUARDRAIL SCHEDULE		
MILE STATION	LOCATION	TRAFFIC BARRIER TERMINAL, TYPE 6
		(EACH)
1141+66.38	LT	1
1141+80.80	LT	1
1171+96.36	LT	1
1171+75.23	RT	1
1175+24.12	LT	1
1175+07.48	RT	1
1219+42.81	LT	1
1219+40.55	RT	1
1222+99.42	LT	1
1222+96.41	RT	1
1245+03.45	LT	1
1245+39.82	RT	1
1248+16.49	LT	1
1248+58.90	RT	1
1340+21.03	LT	1
1339+91.73	RT	1
1342+32.26	LT	1
1342+07.63	RT	1
TOTAL		18

GUARDRAIL SCHEDULE			
MILE STATION	LOCATION	TRAFFIC BARRIER TERMINAL, TYPE 1 (SPECIAL) TANGENT	TERMINAL MARKER - DIRECT APPLIED
		(EACH)	(EACH)
1143+16.42	LT	1	1
1142+80.69	LT	1	1
1171+21.43	LT	1	1
1170+75.25	RT	1	1
1176+24.11	LT	1	1
1175+82.43	RT	1	1
1218+67.50	LT	1	1
1218+40.97	RT	1	1
1223+99.78	LT	1	1
1223+71.23	RT	1	1
1244+53.31	LT	1	1
1244+02.18	RT	1	1
1249+66.38	LT	1	1
1249+21.44	RT	1	1
1340+21.03	LT	1	1
1339+91.73	RT	1	1
1342+32.26	LT	1	1
1342+07.63	RT	1	1
TOTAL		18	18

GUARDRAIL REMOVAL			
MILE STATION	MILE STATION	LOCATION	GUARDRAIL REMOVAL
			(FOOT)
1141+28.88	1143+61.02	LT	232
1141+43.25	1143+25.92	LT	183
1170+99.50	1172+33.85	LT	134
1170+31.86	1172+12.68	RT	181
1174+86.58	1176+70.46	LT	184
1174+78.03	1176+03.46	RT	133
1218+45.57	1219+80.40	LT	134
1217+98.92	1219+77.99	RT	180
1222+61.76	1224+44.97	LT	182
1222+59.15	1223+91.92	RT	133
1244+32.59	1245+40.90	LT	108
1243+44.87	1245+71.70	RT	227
1247+78.95	1250+16.33	LT	237
1248+14.44	1249+29.43	RT	115
1339+74.64	1340+58.53	LT	84
1339+52.07	1340+29.21	RT	77
1341+94.76	1342+81.23	LT	86
1341+70.12	1342+60.27	RT	90
TOTAL			2,702

GUARDRAIL POST SCHEDULE				
STATION	STATION	LOCATION	STEEL PLATE BEAM GUARDRAIL, TYPE A, 6 FOOT POSTS	GUARDRAIL REFLECTORS, TYPE A
			(FOOT)	(EACH)
1141+66.38	1143+16.42	LT	150	5
1141+80.80	1142+80.69	LT	100	4
1171+21.43	1171+96.36	LT	75	4
1170+75.25	1171+75.23	RT	100	4
1175+24.12	1176+24.11	LT	100	4
1175+07.48	1175+82.48	RT	75	4
1218+67.50	1219+42.81	LT	75	4
1218+40.97	1219+40.55	RT	100	4
1222+99.42	1223+99.78	LT	100	4
1222+96.41	1223+71.23	RT	75	4
1244+53.31	1245+03.45	LT	50	3
1243+89.78	1245+39.82	RT	150	5
1248+16.49	1249+66.38	LT	150	5
1248+58.90	1249+21.44	RT	63	3
TOTAL			1,363	57



USER NAME = malvarez	DESIGNED -	REVISED -
	DRAWN -	REVISED -
	CHECKED -	REVISED -
PLOT DATE = 12/2/2025	DATE -	REVISED -

STATE OF ILLINOIS
DEPARTMENT OF TRANSPORTATION

SCHEDULE OF QUANTITIES

SCALE: N/A	SHEET 2	OF 4	SHEETS	STA. N/A	TO STA. N/A
------------	---------	------	--------	----------	-------------

F.A.P. RTE.	SECTION	COUNTY	TOTAL SHEETS	SHEET NO.
322	(28, 29-2) RS-1	MARION	22	9
		CONTRACT NO. 76U40		
		ILLINOIS	FED. AID PROJECT	

MODEL: Default
FILE NAME: W:\191+210 IDOT_214043_TO1_US51 Overlay\CADD Sheets\48_d-98-035-25_schedule of quantities.dgn

CLASS A (SPECIAL) PATCHING SCHEDULE												
STATION	BOUND	LENGTH	WIDTH	CLASS A PATCHES, 10 INCH (SPECIAL)				PARTIAL DEPTH REMOVAL, TYPE IV, 2"	PARTIAL DEPTH PATCHING	PATCHING REINFORCEMENT	TIE BARS 3/4"	SAW CUTS
				TYPE I	TYPE II	TYPE III	TYPE IV					
		FEET	FEET	SQYD				SQ YD	TON	SQ YD	EACH	FOOT
1141+18.00	NB/SB	9603	4	-	-	-	-	4,268	478	-	-	-
1144+00.00	NB	100	12	-	-	-	-	133	15	-	-	-
1147+50.00	NB	300	20	-	-	-	-	667	75	-	-	-
1147+50.00	NB	20	12	-	-	-	27	-	-	27	7	40
1182+50.00	NB	350	12	-	-	-	-	467	52	-	-	-
1185+00.00	NB	12	12	-	-	16	-	-	-	16	-	-
1186+00.00	NB	50	12	-	-	-	67	-	-	67	17	100
1187+00.00	NB	20	12	-	-	-	27	-	-	27	7	40
1189+00.00	SB	6	12	-	8	-	-	-	-	8	-	-
1190+00.00	NB	30	12	-	-	-	40	-	-	40	10	60
1192+00.00	NB	6	6	4	-	-	-	-	-	4	-	-
1201+00.00	SB	150	12	-	-	-	-	200	22	-	-	-
1202+50.00	SB	80	6	-	-	-	53	-	-	53	27	160
1207+00.00	SB	12	6	-	8	-	-	-	-	8	-	-
1207+50.00	SB	24	12	-	-	-	32	-	-	32	8	48
1209+50.00	NB	20	12	-	-	-	27	-	-	27	7	40
1215+00.00	SB	300	12	-	-	-	-	400	45	-	-	-
1217+00.00	SB	100	12	-	-	-	133	-	-	133	34	200
1227+50.00	NB	100	12	-	-	-	-	133	15	-	-	-
1228+50.00	SB	250	12	-	-	-	-	333	37	-	-	-
1237+21.00	NB/SB	11621	2	-	-	-	-	2,583	289	-	-	-
1253+00.00	SB	15	12	-	-	20	-	-	-	20	-	-
1236+50.00	SB	12	6	-	8	-	-	-	-	8	-	-
1242+50.00	SB	300	6	-	-	-	200	-	-	200	100	600
1242+50.00	NB	250	6	-	-	-	167	-	-	167	84	500
1252+50.00	SB	30	12	-	-	-	40	-	-	40	10	60
1262+50.00	SB	24	12	-	-	-	32	-	-	32	8	48
1264+50.00	SB	50	12	-	-	-	67	-	-	67	17	100
1266+00.00	SB	6	6	4	-	-	-	-	-	4	-	-
1268+00.00	SB	6	6	4	-	-	-	-	-	4	-	-
1288+50.00	SB	24	6	-	-	16	-	-	-	16	8	48
1290+00.00	SB	100	6	-	-	-	67	-	-	67	34	200
1296+00.00	NB	20	6	-	13	-	-	-	-	13	7	40
1296+40.00	NB	8	12	-	11	-	-	-	-	11	-	-
1298+00.00	SB	6	6	4	-	-	-	-	-	4	-	-
1302+00.00	NB	30	6	-	-	20	-	-	-	20	10	60
1307+50.00	NB	20	12	-	-	-	27	-	-	27	7	40
1310+00.00	SB	8	12	-	11	-	-	-	-	11	-	-
1316+00.00	NB	6	6	4	-	-	-	-	-	4	-	-
1317+65.00	NB	40	12	-	-	-	53	-	-	53	14	80
1318+40.00	SB	75	12	-	-	-	100	-	-	100	25	150
1319+00.00	NB	24	12	-	-	-	32	-	-	32	8	48
1322+75.00	SB	200	12	-	-	-	267	-	-	267	67	400
1323+25.00	SB	26	6	-	-	17		-	-	17	9	52
1324+20.00	NB	25	12	-	-	-	33	-	-	33	9	50
1324+20.00	SB	6	12	-	8	-	-	-	-	8	-	-
1325+00.00	SB	6	12	-	8	-	-	-	-	8	-	-
SUBTOTAL				20	75	89	1,490	9,184	1,029	1,674	534	3,164

NOTE:
STATION INDICATED IS THE START OF THE
PATCH IN THE DIRECTION OF TRAVEL.

NBDL = NORTHBOUND DRIVING LANE
NBPL = NORTHBOUND PASSING LANE
SBDL = SOUTHBOUND DRIVING LANE
SBPL = SOUTHBOUND PASSING LANE



USER NAME = malvarez	DESIGNED -	REVISED -
	DRAWN -	REVISED -
	CHECKED -	REVISED -
PLOT DATE = 12/2/2025	DATE -	REVISED -

STATE OF ILLINOIS
DEPARTMENT OF TRANSPORTATION

SCHEDULE OF QUANTITIES

SCALE: N/A SHEET 3 OF 4 SHEETS STA. N/A TO STA. N/A

F.A.P. RTE.	SECTION	COUNTY	TOTAL SHEETS	SHEET NO.
322	(28, 29-2) RS-1	MARION	22	10
		CONTRACT NO. 76U40		
		ILLINOIS	FED. AID PROJECT	

MODEL: Default
FILE NAME: W:\191+210 IDOT_214043_TO1_US51 Overlay\CADD Sheets\us8_d-98-035-25_schedule of quantities.dgn

CLASS A (SPECIAL) PATCHING SCHEDULE												
STATION	BOUND	LENGTH	WIDTH	CLASS A PATCHES, 10 INCH (SPECIAL)				PARTIAL DEPTH REMOVAL, TYPE IV, 2"	PARTIAL DEPTH PATCHING	PATCHING REINFORCEMENT	TIE BARS 3/4"	SAW CUTS
				TYPE I	TYPE II	TYPE III	TYPE IV					
		FEET	FEET	SQYD				SQ YD	TON	SQ YD	EACH	FOOT
1331+02.00	SB	40	12	-	-	-	53	-	-	53	14	80
1331+94.00	SB	12	6	-	8	-	-	-	-	8	-	-
1332+86.00	NB	12	6	-	8	-	-	-	-	8	-	-
1333+66.00	SB	6	6	4	-	-	-	-	-	4	-	-
1334+46.00	SB	6	6	4	-	-	-	-	-	4	-	-
1334+92.00	SB	6	6	4	-	-	-	-	-	4	-	-
1335+32.00	SB	20	6	-	13	-	-	-	-	13	7	40
1336+52.00	SB	20	12	-	-	-	27	-	-	27	7	40
1337+32.00	SB	40	6	-	-	-	27	-	-	27	14	80
1338+52.00	SB	40	12	-	-	-	53	-	-	53	14	80
1348+12.00	NB	120	12	-	-	-	160	-	-	160	40	240
1349+92.00	NB	80	12	-	-	-	107	-	-	107	27	160
1350+42.00	NB	20	12	-	-	-	27	-	-	27	7	40
1350+92.00	NB	40	12	-	-	-	53	-	-	53	14	80
1351+42.00	NB	20	6	-	13	-	-	-	-	13	7	40
SUBTOTAL				12	43	-	507	-	-	562	151	880
TOTAL				32	118	89	1,997	9,184	1,029	2,236	685	4,044

NOTE:
STATION INDICATED IS THE START OF THE PATCH IN THE DIRECTION OF TRAVEL.

NBDL = NORTHBOUND DRIVING LANE
NBPL = NORTHBOUND PASSING LANE
SBDL = SOUTHBOUND DRIVING LANE
SBPL = SOUTHBOUND PASSING LANE

HMA PATCHING/JOINT REPAIR SCHEDULE							
STATION	BOUND	ADJACENT RIVER/STRUCTURE	LENGTH	WIDTH	CLASS A PATCH - EXPANSION JOINT	WIDE FLANGE BEAM TERMINAL JOINT REPAIR (SPECIAL)	CLASS D PATCH, 10 INCH
			FEET	FEET	FOOT	EACH	SQ YD
1141+18.00	NB	CROOKED CREEK	6	24	24	-	16
1141+18.00	SB	CROOKED CREEK	6	24	24	1	-
1172+43.11	NB/SB	TURKEY CREEK	6	24	24	1	-
1174+61.11	NB/SB	TURKEY CREEK	6	24	24	1	-
1219+95.71	NB/SB	TURKEY CREEK	6	24	24	1	-
1222+42.99	NB/SB	TURKEY CREEK	6	24	24	1	-
1245+75.55	NB/SB	RAILROAD	6	24	24	1	-
1247+85.08	NB/SB	RAILROAD	6	24	24	1	-
1340+59.42	NB/SB	PRAIRIE CREEK	6	24	24	1	-
1341+67.21	NB/SB	PRAIRIE CREEK	6	24	24	-	16
TOTAL					240	8	32

PAVEMENT MARKING SCHEDULE											
STATION	STATION	LOCATION	STREET NAME LOCATED WITHIN STATION RANGE	SHORT TERM PAVEMENT MARKING	SHORT TERM PAVEMENT MARKING REMOVAL	TEMPORARY PAVEMENT MARKING – LINE 6" PAINT	TEMPORARY PAVEMENT MARKING – LINE 24" PAINT	THERMOPLASTIC PAVEMENT MARKING - LINE 6"	THERMOPLASTIC PAVEMENT MARKING - LINE 24"	RAISED REFLECTIVE PAVEMENT MARKER	RAISED REFLECTIVE PAVEMENT MARKER REMOVAL
				(FOOT)	(SQ FT)	(FOOT)	(FOOT)	(FOOT)	(FOOT)	(EACH)	(EACH)
1141+18.00	1155+98.09	LT/RT	-	740	370	6,660	-	6,660	-	37	37
1155+98.09	1162+24.00	LT/RT	COMMUNITY BEACH ROAD	180	126	1,408	24	1,408	24	8	8
1162+24.00	1172+43.11	LT/RT	-	255	127	2,293	-	2,293	-	13	13
1172+43.11	1174+61.11	BRIDGE OMISSION		-	-	-	-	-	-	-	-
1174+61.11	1219+95.71	LT/RT	-	1,134	567	10,203	-	10,203	-	57	57
1219+95.71	1222+42.99	BRIDGE OMISSION		-	-	-	-	-	-	-	-
1222+42.99	1233+33.13	LT/RT	BETHEL ROAD	297	184	2,453	24	2,453	24	14	14
1233+33.13	1245+75.55	LT/RT	-	311	155	2,795	-	2,795	-	16	16
1245+75.55	1247+85.08	BRIDGE OMISSION		-	-	-	-	-	-	-	-
1247+85.08	1258+03.99	LT/RT	BRINK ROAD	267	151	2,293	12	2,293	12	13	13
1258+03.99	1284+55.93	LT/RT	RED STRIPE ROAD	687	379	5,967	24	5,967	24	33	33
1284+55.93	1339+46.77	LT/RT	CEMETERY ROAD	1,385	710	12,354	12	12,354	12	69	69
1339+46.77	1340+59.42	LT/RT	-	28	14	253	-	253	-	1	1
1340+59.42	1341+67.21	BRIDGE OMISSION		-	-	-	-	-	-	-	-
1341+67.21	1346+82.75	LT/RT	OLD 51 ROAD	141	88	1,160	12	1,160	12	6	6
1346+82.75	1352+86.00	LT/RT	TEXAS AVENUE	163	99	1,357	12	1,357	12	8	8
TOTAL				5,586	2,973	49,197	120	49,197	120	273	273

<div><div></div><div>BLA, Inc.</div></div>	USER NAME = malvarez		DESIGNED -	REVISED -	STATE OF ILLINOIS DEPARTMENT OF TRANSPORTATION	SCHEDULE OF QUANTITIES				F.A.P. RTE.	SECTION	COUNTY	TOTAL SHEETS	SHEET NO.
			DRAWN -	REVISED -						322	(28, 29-2) RS-1	MARION	22	11
			CHECKED -	REVISED -						CONTRACT NO. 76U40				
	PLOT DATE = 1/15/2026		DATE -	REVISED -		SCALE: N/A	SHEET 4	OF 4	SHEETS	STA. N/A	TO STA. N/A	ILLINOIS FED. AID PROJECT		

MODEL: Default
FILE NAME: W:\191-210 IDOT_214043_TOI_US51 Overlay\CADD Sheets\48_d-98-035-25 layout map.dgn



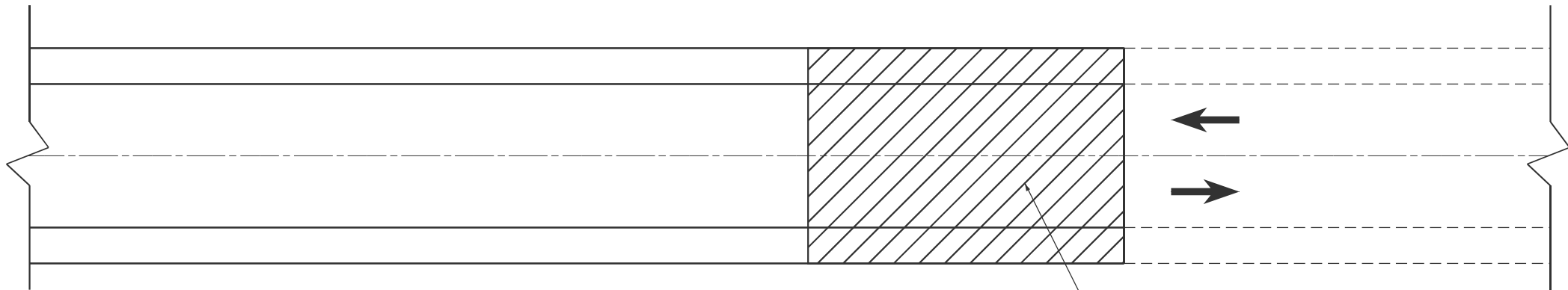
DETAIL B
END PROJECT IMPROVEMENTS
STA. 1352+86.00
SOUTH OF BUTT JOINT ON US ROUTE 51



DETAIL A
BEGIN PROJECT IMPROVEMENTS
STA. 1141+18.00
NORTH OF JOINT BETWEEN BRIDGE AND BRIDGE APPROACH
ON US ROUTE 51 BRIDGE SN 061-0075 & SN 061-0076

USER NAME = malvarez	DESIGNED -	REVISED -
	DRAWN -	REVISED -
	CHECKED -	REVISED -
PLOT DATE = 12/2/2025	DATE -	REVISED -

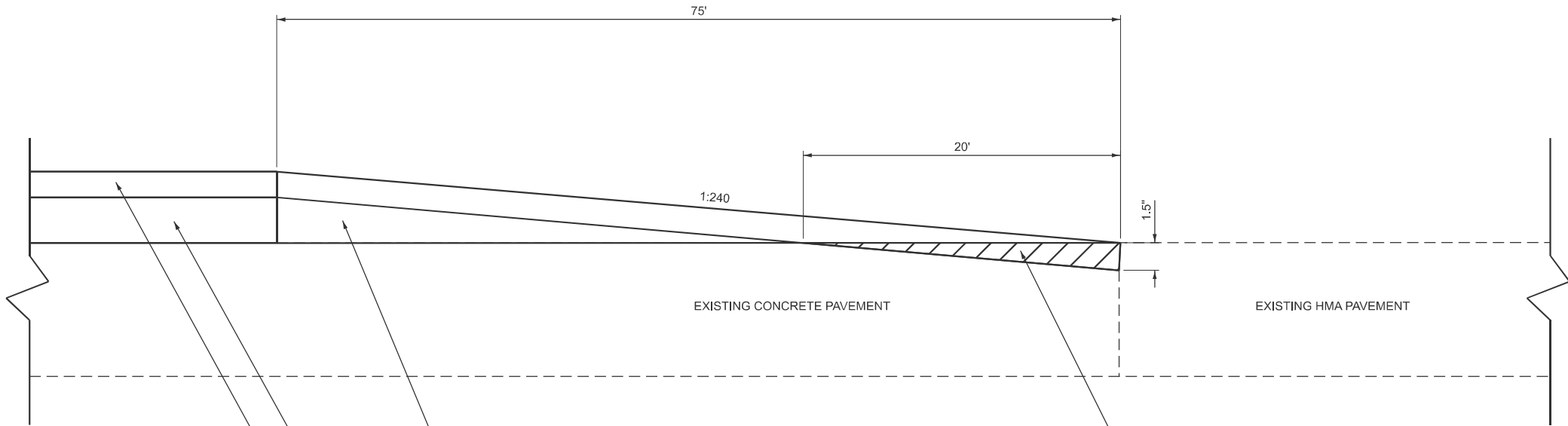
F.A.P. RTE.	SECTION	COUNTY	TOTAL SHEETS	SHEET NO.
322	(28,29-2)RS-1	MARION	22	12
CONTRACT NO. 76U40				
ILLINOIS FED. AID PROJECT				



END PROJECT TRANSITION DETAIL

(PLAN VIEW) - NOT TO SCALE
APPLICABLE TO: STA. 1352+86.00

PORTLAND CEMENT CONCRETE SURFACE REMOVAL- BUTT JOINT



END PROJECT TRANSITION DETAIL

(ELEVATION) - NOT TO SCALE
APPLICABLE TO: STA. 1352+86.00

PORTLAND CEMENT CONCRETE SURFACE REMOVAL- BUTT JOINT

HOT-MIX ASPHALT BINDER COURSE, IL-19.0, N70, VARIABLE DEPTH

HOT-MIX ASPHALT BINDER COURSE, IL-19.0, N70, 2.25"

HOT-MIX ASPHALT SURFACE COURSE, IL-9.5, MIX "D", N70, 1.5"

EXISTING CONCRETE PAVEMENT

EXISTING HMA PAVEMENT

MODEL: Default
FILE NAME: W:\191-210 IDOT_214043_TO1_US51 Overlay\CADD Sheets\08_d-98-035-25 transition details.dgn



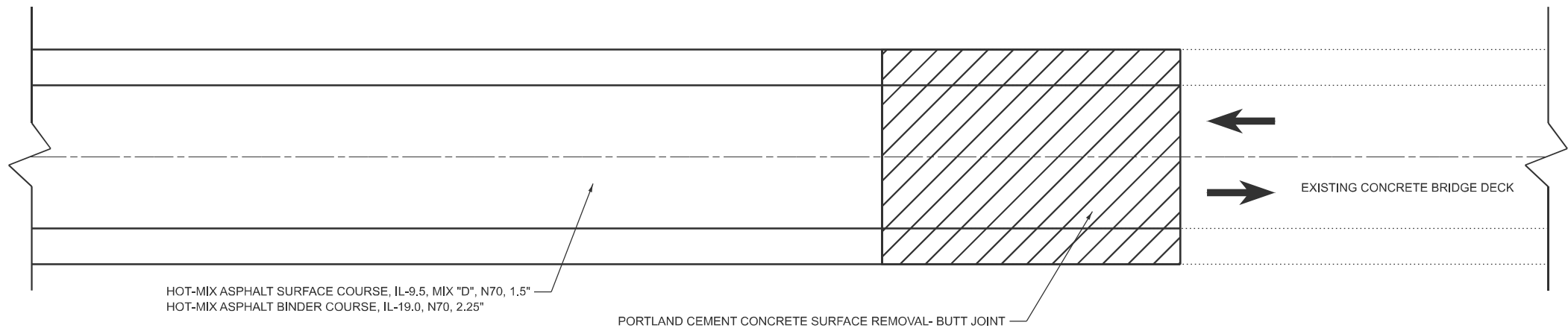
USER NAME	= malvarez	DESIGNED	-	REVISED	-
		DRAWN	-	REVISED	-
		CHECKED	-	REVISED	-
PLOT DATE	= 12/2/2025	DATE	-	REVISED	-

**STATE OF ILLINOIS
DEPARTMENT OF TRANSPORTATION**

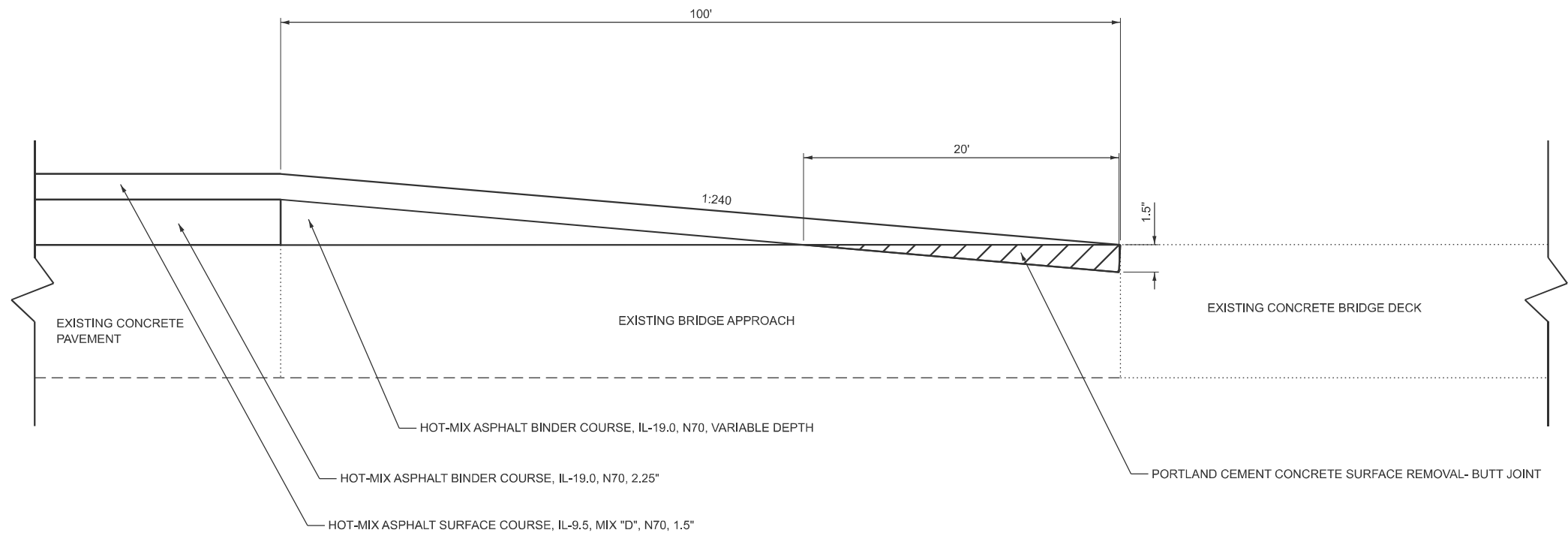
END TRANSITION DETAILS

SCALE: NTS SHEET 1 OF 1 SHEETS STA. N/A TO STA. N/A

F.A.P. RTE.	SECTION	COUNTY	TOTAL SHEETS	SHEET NO.
322	(28,29-2)RS-1	MARION	22	13
CONTRACT NO. 76U40				
ILLINOIS FED. AID PROJECT				



BRIDGE APPROACH TRANSITION DETAIL
(PLAN VIEW) - NOT TO SCALE
APPLICABLE TO: SN 061-0075, 061-0076, 061-0072, 061-0073, 061-0077, 061-0074



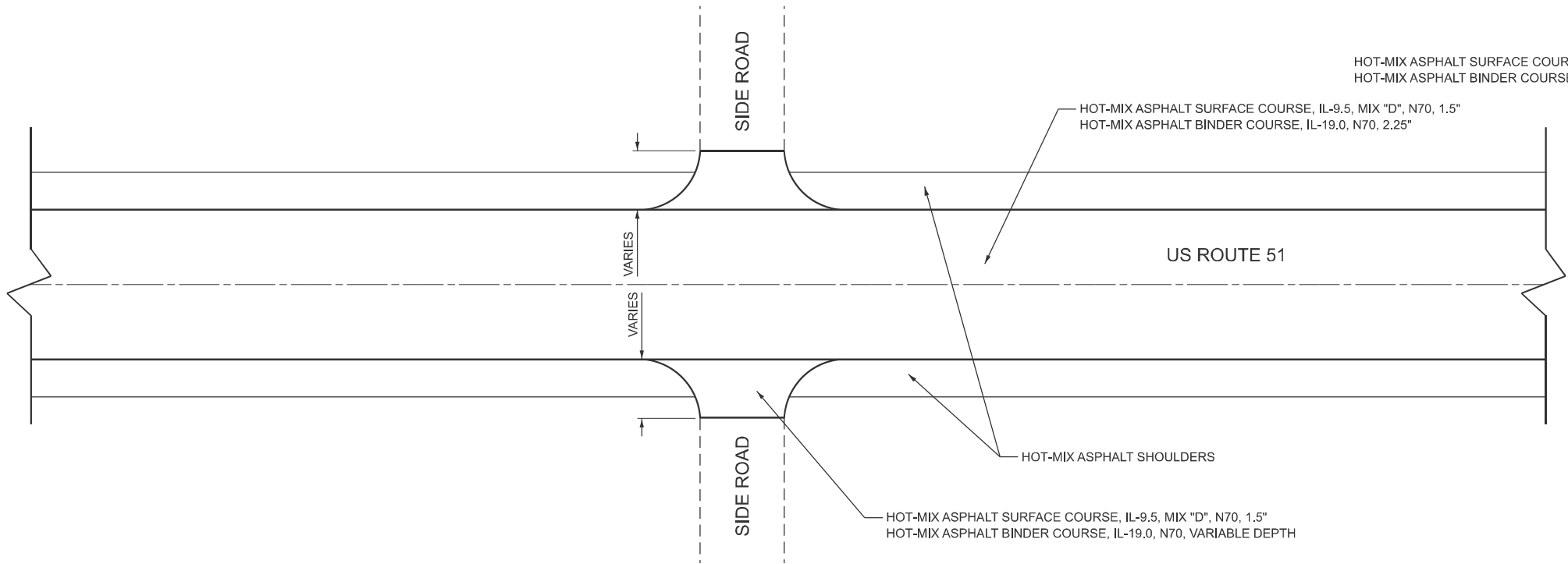
BRIDGE APPROACH TRANSITION DETAIL
(ELEVATION) - NOT TO SCALE
APPLICABLE TO: SN 061-0075, 061-0076, 061-0072, 061-0073, 061-0077, 061-0074

NOTE:
CONTRACTOR TO AVOID ANY IMPACTS TO
EXISTING BRIDGE EXPANSION/ RELIEF JOINTS
WHEN INSTALLING PCC BUTT JOINTS.

MODEL: Default
FILE NAME: W:\191-210 IDOT_214043_TO1_US51 Overlay\CADD Sheets\08_d-98-035-25 transition details.dgn

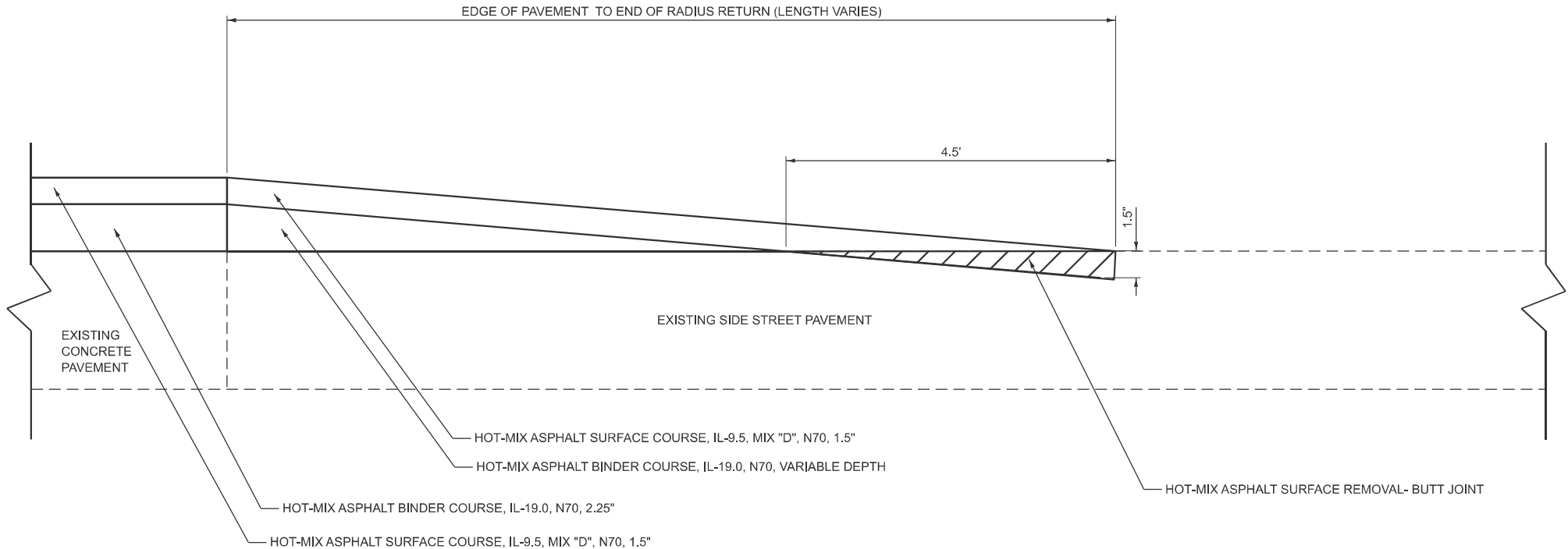
	USER NAME = malvarez	DESIGNED -	REVISED -	STATE OF ILLINOIS DEPARTMENT OF TRANSPORTATION	BRIDGE APPROACH TRANSITION DETAILS			F.A.P. RTE.	SECTION	COUNTY	TOTAL SHEETS	SHEET NO.
		DRAWN -	REVISED -					322	(28,29-2)RS-1	MARION	22	14
		CHECKED -	REVISED -					CONTRACT NO. 76U40				
	PLOT DATE = 12/2/2025	DATE -	REVISED -		SCALE: NTS	SHEET 1	OF 1 SHEETS	STA. N/A	TO STA. N/A	ILLINOIS FED. AID PROJECT		

MODEL: Default
FILE NAME: W:\191+210 IDOT_214043_TO1_US51 Overlay\CADD Sheets\us8_d-98-035-25 transition details.dgn



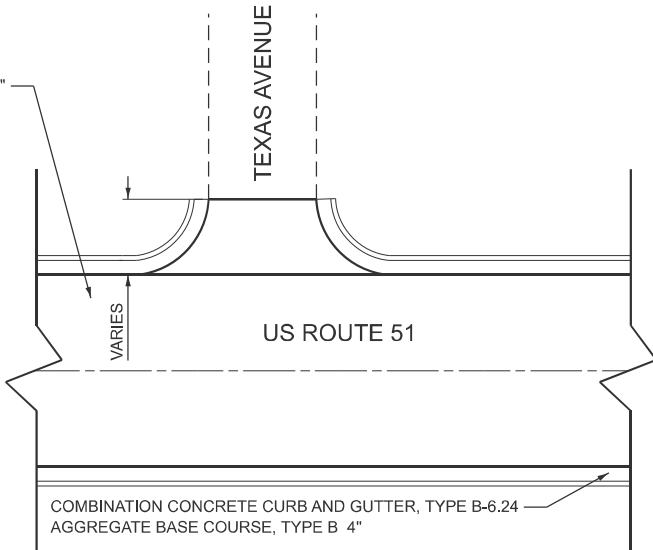
SIDE ROAD TRANSITION DETAIL

(PLAN VIEW) - NOT TO SCALE
APPLICABLE TO: OLD 51 ROAD, COMMUNITY BEACH ROAD, BETHEL ROAD,
BRINK ROAD , RED STRIPE ROAD, OLD ROAD 51 , TEXAS AVENUE



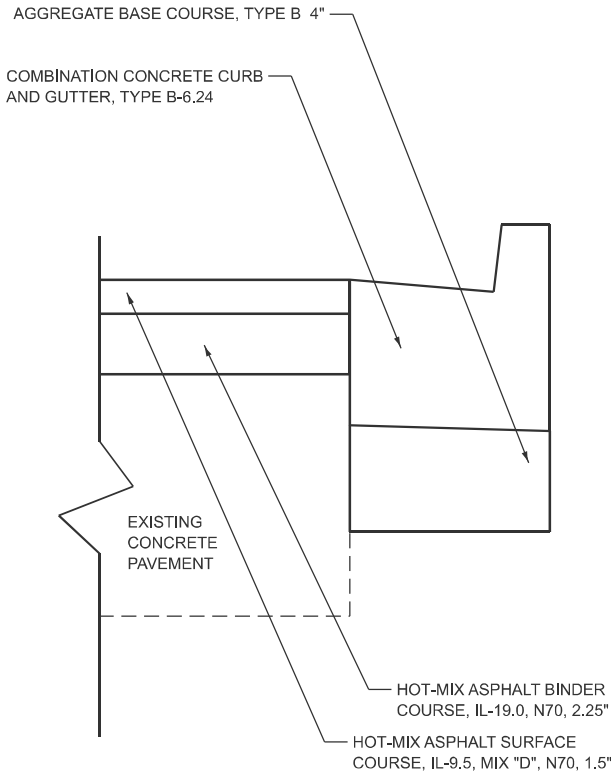
SIDE ROAD TRANSITION DETAIL

(ELEVATION VIEW) - NOT TO SCALE
APPLICABLE TO: OLD 51 ROAD, COMMUNITY BEACH ROAD, BETHEL ROAD,
BRINK ROAD , RED STRIPE ROAD, OLD ROAD 51 , TEXAS AVENUE



COMBINATION CURB AND GUTTER DETAIL

(PLAN VIEW) - NOT TO SCALE
APPLICABLE TO: TEXAS AVENUE (STA. 1350+25.98 TO STA. 1352+86.00)



COMBINATION CURB AND GUTTER DETAIL

(ELEVATION VIEW) - NOT TO SCALE
APPLICABLE TO: TEXAS AVENUE (STA. 1350+25.98 TO STA. 1352+86.00)



USER NAME	= malvarez	DESIGNED	-	REVISED	-
		DRAWN	-	REVISED	-
		CHECKED	-	REVISED	-
PLOT DATE	= 12/2/2025	DATE	-	REVISED	-

STATE OF ILLINOIS
DEPARTMENT OF TRANSPORTATION

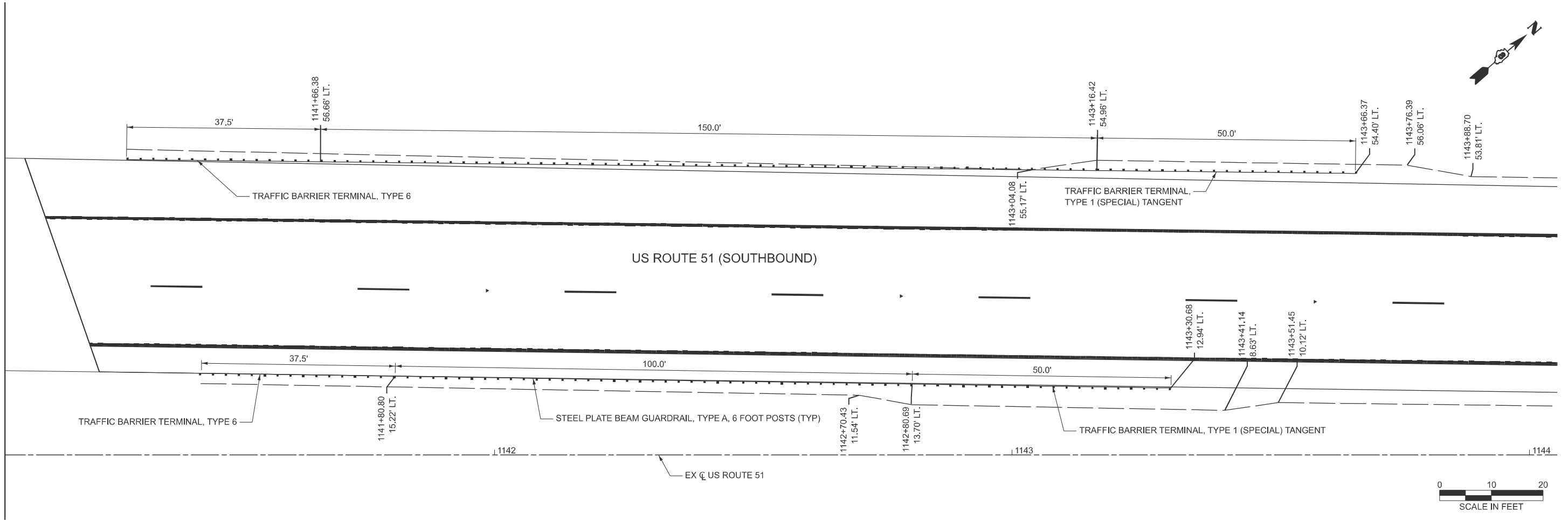
SIDE ROAD TRANSITION DETAILS

SCALE: NTS SHEET 1 OF 2 SHEETS STA. N/A TO STA. N/A

F.A.P. RTE.	SECTION	COUNTY	TOTAL SHEETS	SHEET NO.
322	(28,29-2)RS-1	MARION	22	15
CONTRACT NO. 76U40				
ILLINOIS FED. AID PROJECT				

MODEL: EXCL_US51 - Plan 1 [Sheet]
FILE NAME: W:\191-210 IDOT_214043_TO1_US51 Overlay\CADD Sheets\48_d-98-035-25_guardrail details.dgn

MATCH LINE
SN 061-0075



USER NAME = malvarez	DESIGNED -	REVISED -
	DRAWN -	REVISED -
	CHECKED -	REVISED -
PLOT DATE = 12/2/2025	DATE -	REVISED -

STATE OF ILLINOIS
DEPARTMENT OF TRANSPORTATION

GUARDRAIL DETAILS

SCALE: NTS SHEET 1 OF 5 SHEETS STA. 9+26.40 TO STA. 18+04.68

F.A.P. RTE.	SECTION	COUNTY	TOTAL SHEETS	SHEET NO.
322	(28,29-2)RS-1	MARION	22	16
CONTRACT NO. 76U40				
ILLINOIS FED. AID PROJECT				

MODEL: EXCL_US51 - Plan 3 [Sheet]
FILE NAME: W:\191-210 IDOT_214043_TO1_US51 Overlay\CADD Sheets\48_d-98-035-25_guardrail details.dgn

MATCH LINE
SN 061-0072



USER NAME = malvarez

PLOT DATE = 12/2/2025

DESIGNED -

DRAWN -

CHECKED -

DATE -

REVISED -

REVISED -

REVISED -

REVISED -

STATE OF ILLINOIS
DEPARTMENT OF TRANSPORTATION

GUARDRAIL DETAILS

SCALE: NTS SHEET 2 OF 5 SHEETS STA. 44+12.33 TO STA. 50+82.73

F.A.P.
RTE.

322

SECTION

(28,29-2)RS-1

COUNTY

MARION

TOTAL
SHEETS

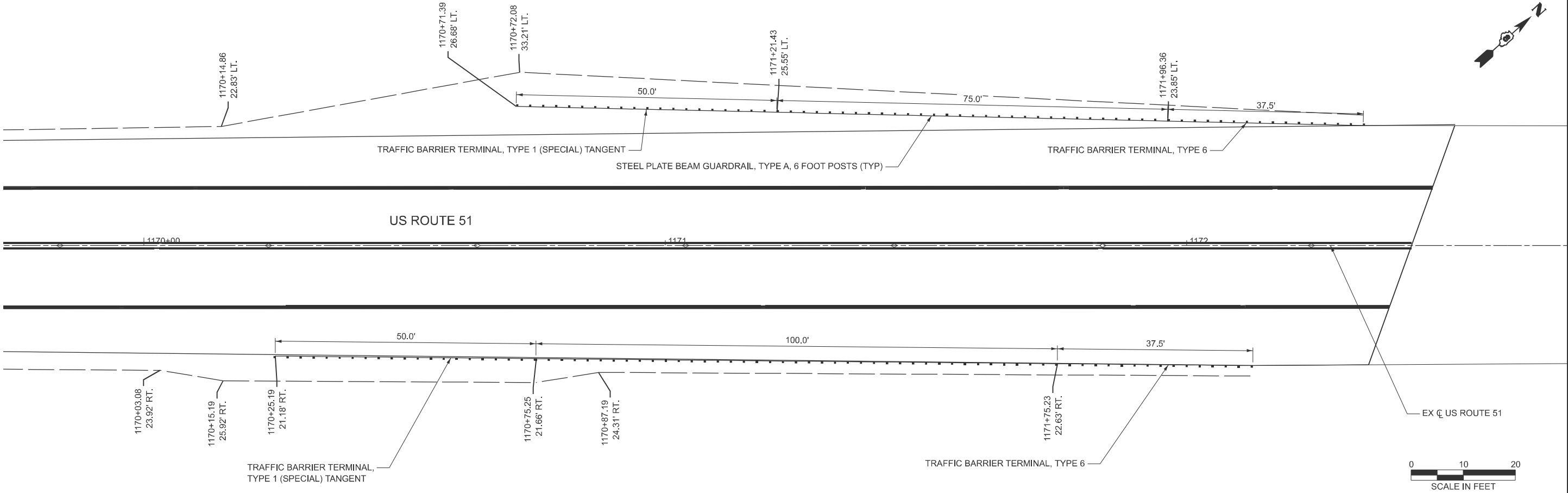
22

SHEET
NO.

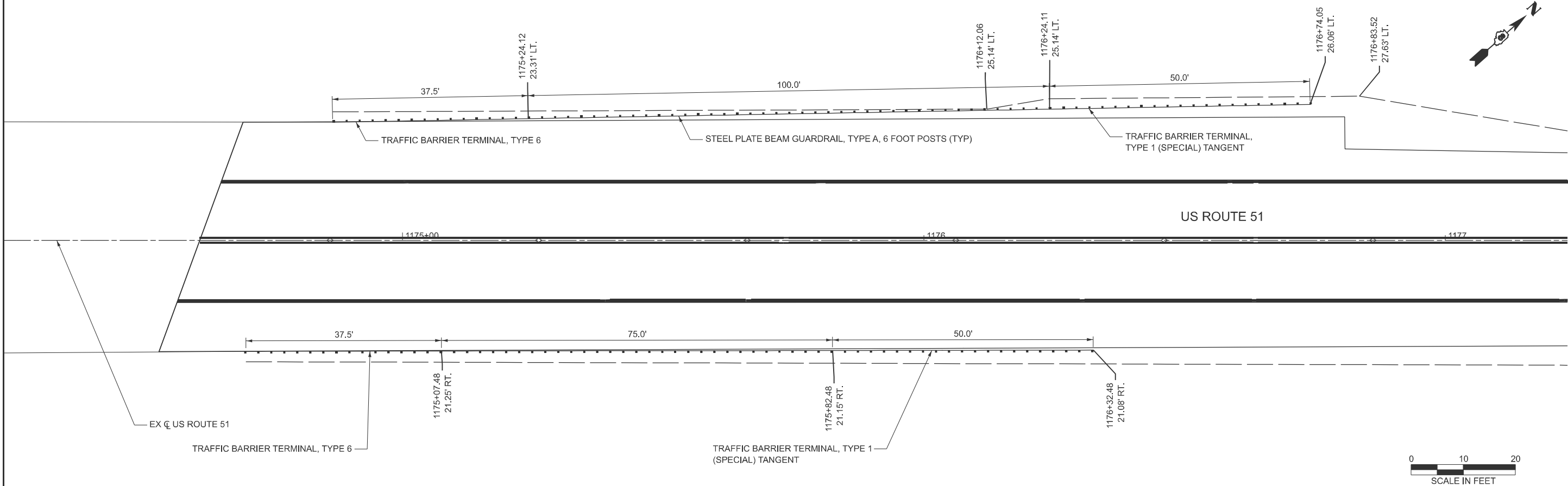
17

CONTRACT NO. 76U40

ILLINOIS FED. AID PROJECT



MATCH LINE
SN 061-0072



MODEL: EXCL_US51 - Plan 5 [Sheet]
FILE NAME: W:\191-210 IDOT 214043_TO1_US51 Overlay\CADD Sheets\48_d-98-035-25_guardrail_details.dgn

MATCH LINE
SN 061-0073



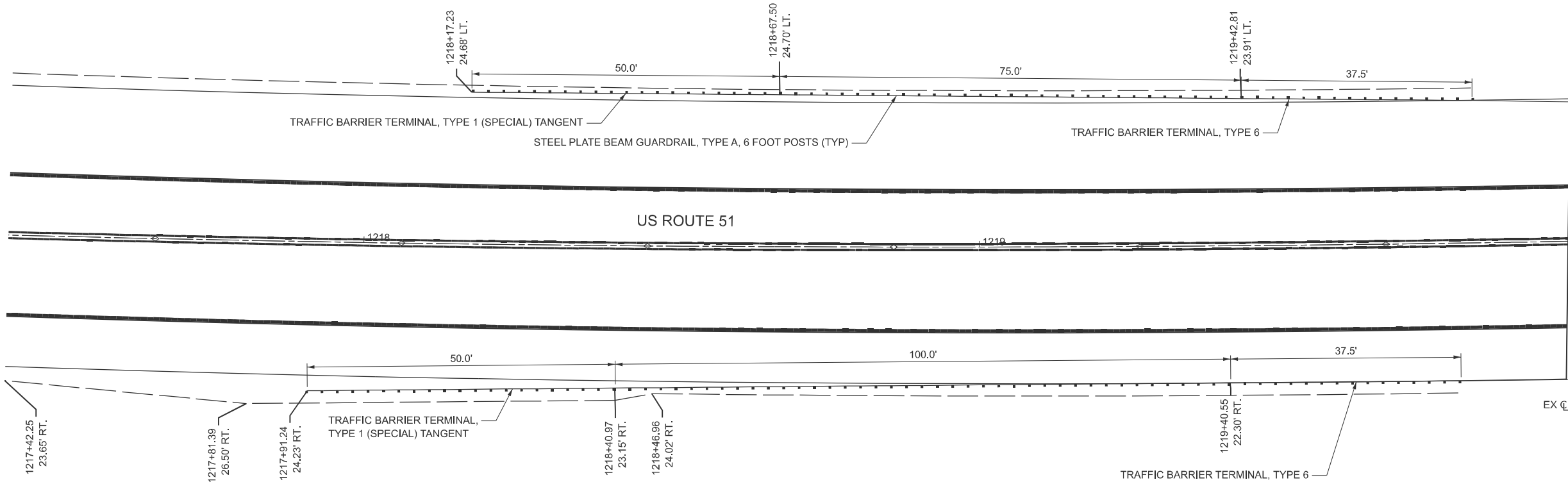
USER NAME = malvarez	DESIGNED -	REVISED -
	DRAWN -	REVISED -
	CHECKED -	REVISED -
PLOT DATE = 6/23/2025	DATE -	REVISED -

STATE OF ILLINOIS
DEPARTMENT OF TRANSPORTATION

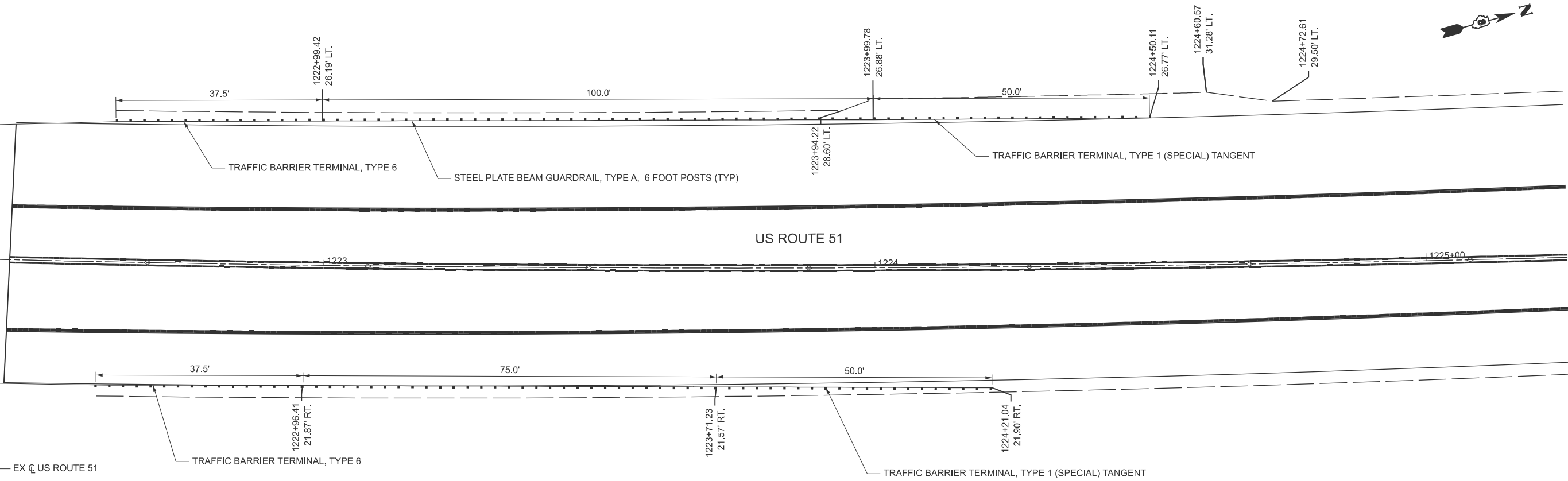
GUARDRAIL DETAILS

SCALE: NTS SHEET 3 OF 5 SHEETS STA. 91+41.52 TO STA. 99+24.91

F.A.P. RTE.	SECTION	COUNTY	TOTAL SHEETS	SHEET NO.
322	(28,29-2)RS-1	MARION	22	18
CONTRACT NO. 76U40				
ILLINOIS FED. AID PROJECT				



MATCH LINE
SN 061-0073



MODEL: EXCL_US51 - Plan 7 [Sheet]
FILE NAME: W:\191-210 IDOT_214043_TO1_US51 Overlay\CADD Sheets\us8_d98-035-25_guardrail details.dgn

MATCH LINE
SN 061-0077



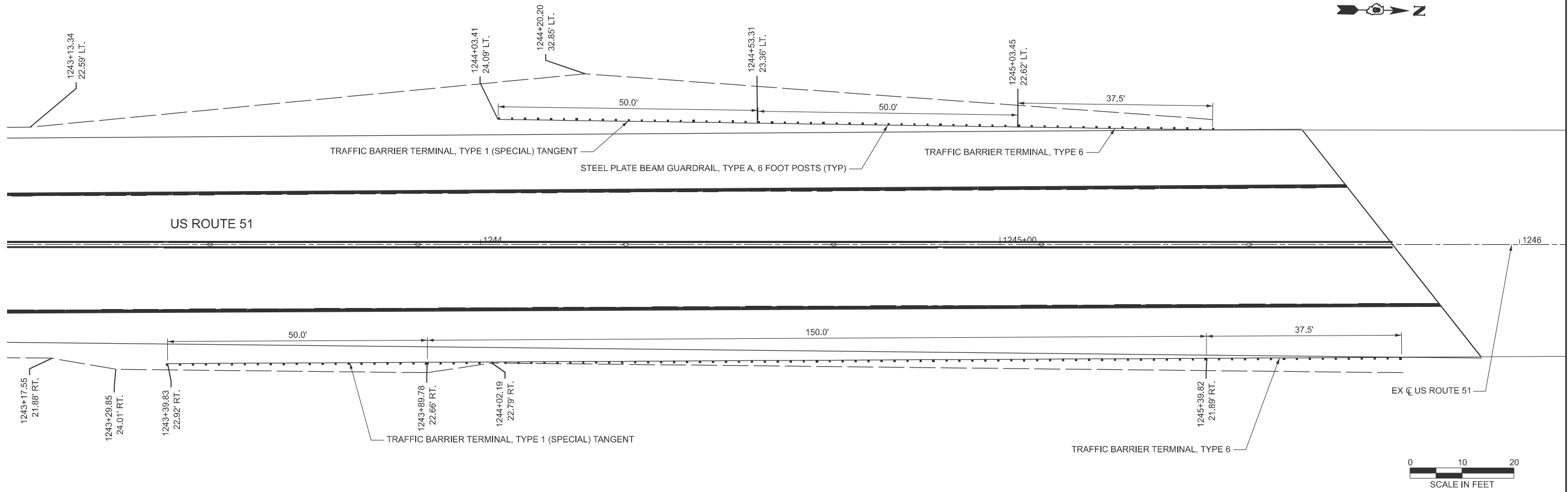
USER NAME = malvarez	DESIGNED -	REVISED -
	DRAWN -	REVISED -
	CHECKED -	REVISED -
PLOT DATE = 12/2/2025	DATE -	REVISED -

STATE OF ILLINOIS
DEPARTMENT OF TRANSPORTATION

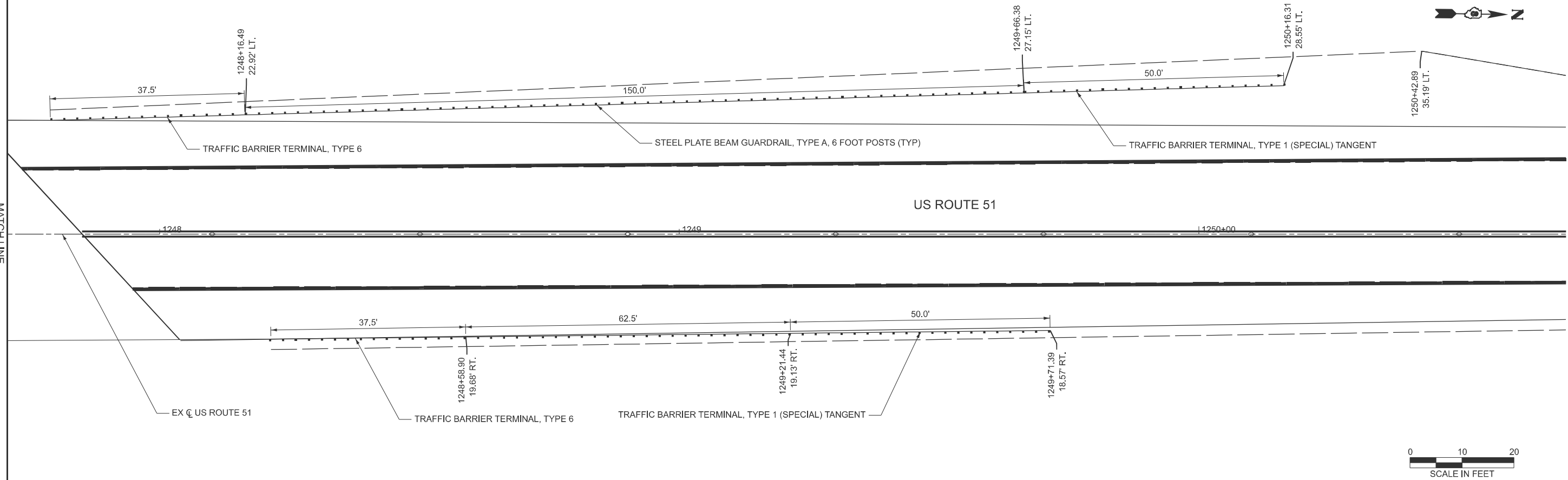
GUARDRAIL DETAILS

SCALE: NTS SHEET 4 OF 5 SHEETS STA. 117+08.22 TO STA. 124+69.93

F.A.P. RTE.	SECTION	COUNTY	TOTAL SHEETS	SHEET NO.
322	(28,29-2)RS-1	MARION	22	19
CONTRACT NO. 76U40				
ILLINOIS FED. AID PROJECT				



MATCH LINE
SN 061-0077



MODEL: EXCL_US51 - Plan 9 [Sheet]
FILE NAME: W:\191-210 IDOT_214043_TOI_US51 Overlay\CADD Sheets\us8_d-98-035-25_guardrail details.dgn

MATCH LINE
SN 061-0074



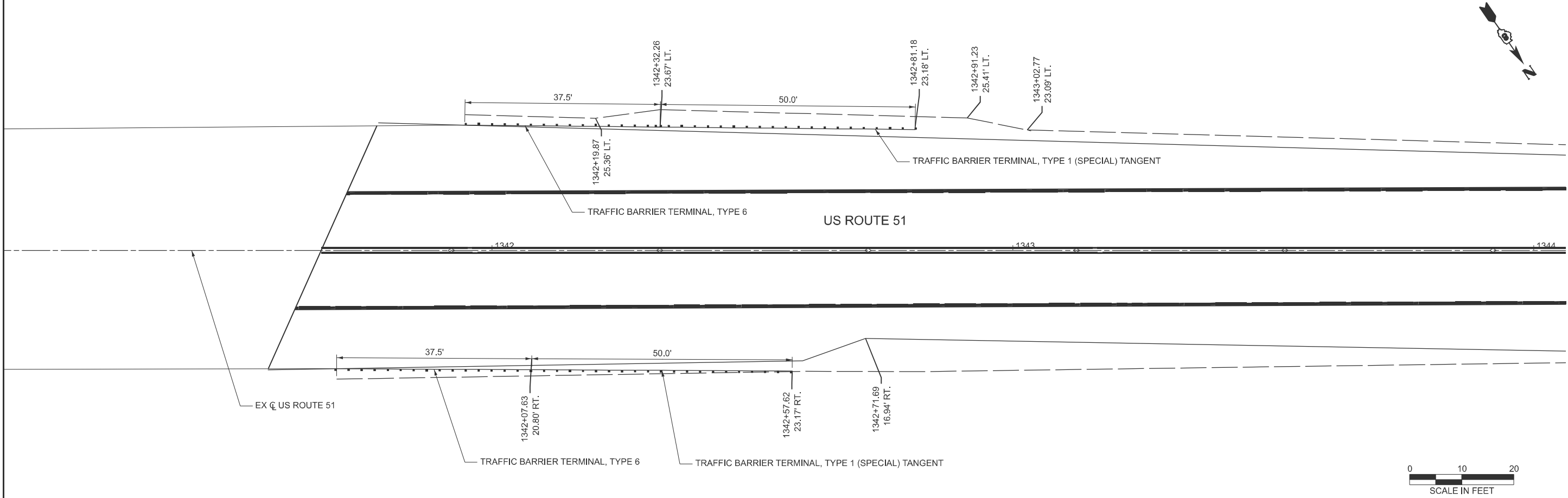
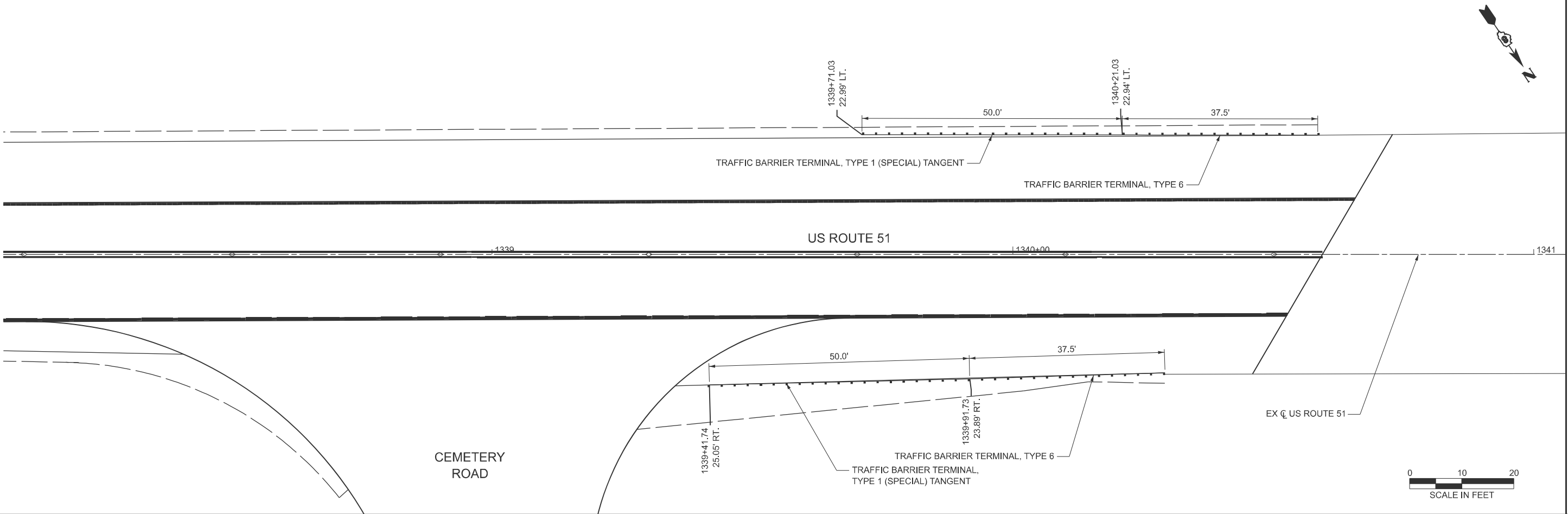
USER NAME = malvarez	DESIGNED -	REVISED -
	DRAWN -	REVISED -
	CHECKED -	REVISED -
PLOT DATE = 12/2/2025	DATE -	REVISED -

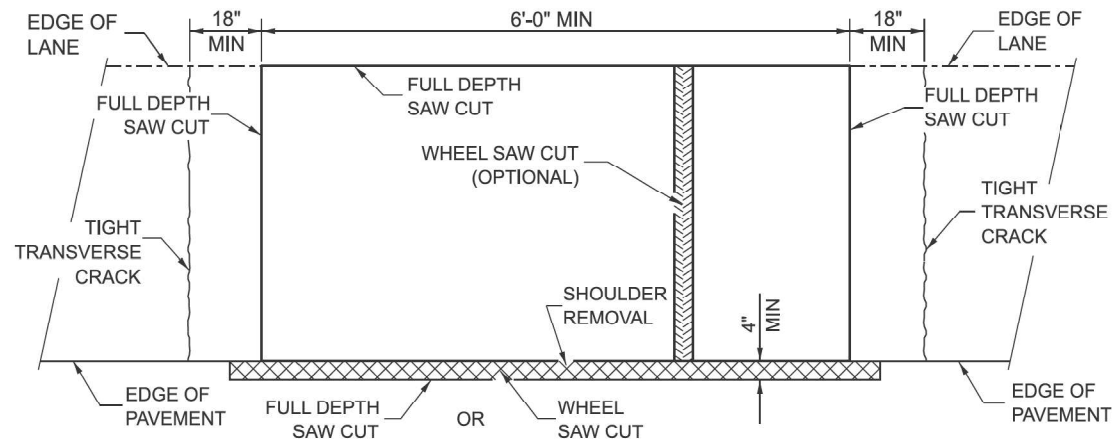
STATE OF ILLINOIS
DEPARTMENT OF TRANSPORTATION

GUARDRAIL DETAILS

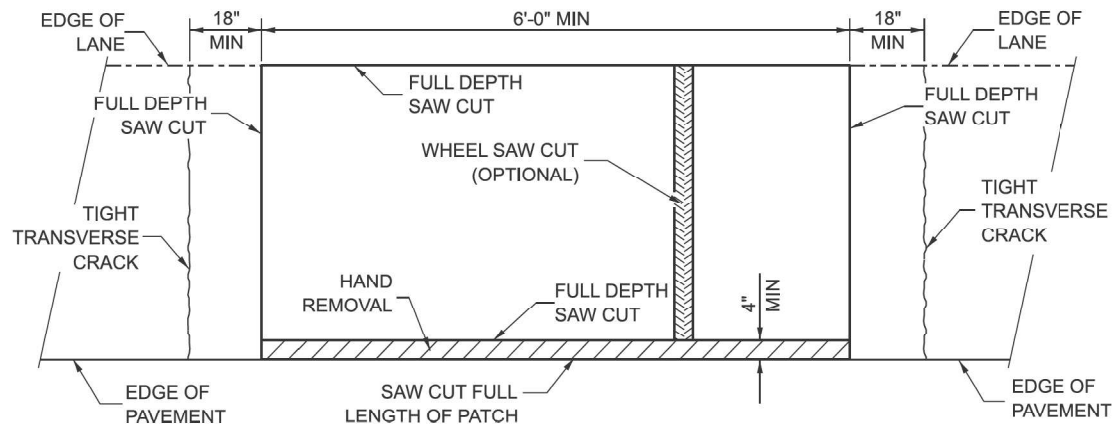
SCALE: NTS SHEET 5 OF 5 SHEETS STA. 212+05.46 TO STA. 218+05.46

F.A.P. RTE.	SECTION	COUNTY	TOTAL SHEETS	SHEET NO.
322	(28,29-2)RS-1	MARION	22	20
CONTRACT NO. 76U40				
ILLINOIS FED. AID PROJECT				

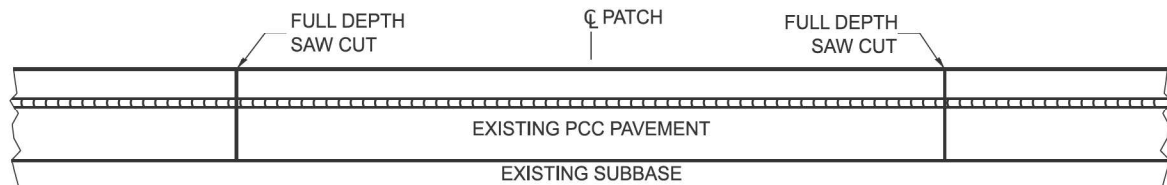




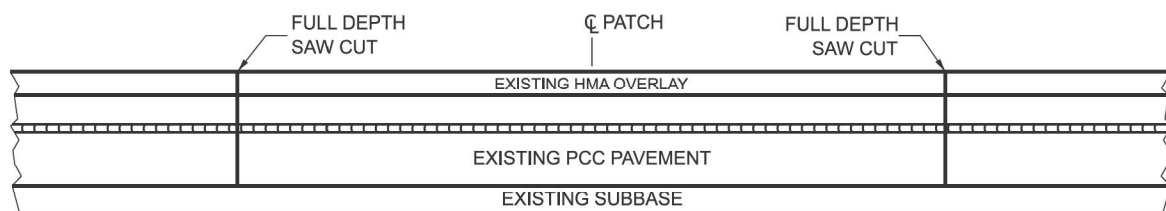
**PAVEMENT SAWING DETAIL
(HMA SHOULDER)**



**PAVEMENT SAWING DETAIL
(PCC SHOULDER)**

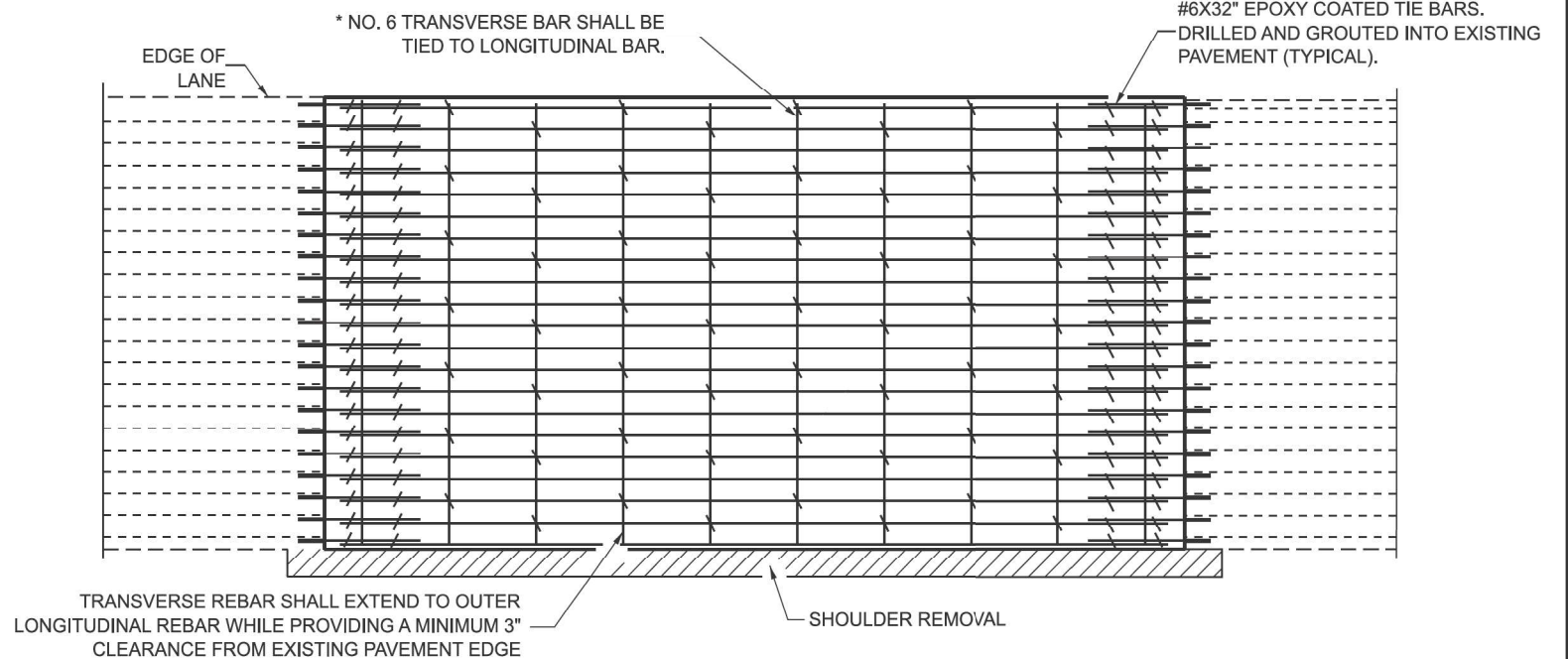


EXISTING PAVEMENT WITHOUT HMA SURFACE

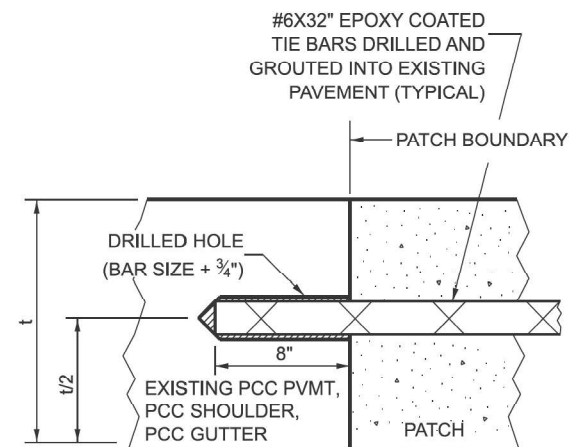


EXISTING PAVEMENT WITH HMA SURFACE

**PAVEMENT SAWING DETAIL FOR CLASS A PATCHING
(CRC PAVEMENT)**



PAVEMENT REINFORCEMENT DETAIL



LONGITUDINAL CONSTRUCTION JOINT

NOTES:

EXISTING LONGITUDINAL REINFORCEMENT SPACING; $\pm 6\frac{1}{2}$ ".

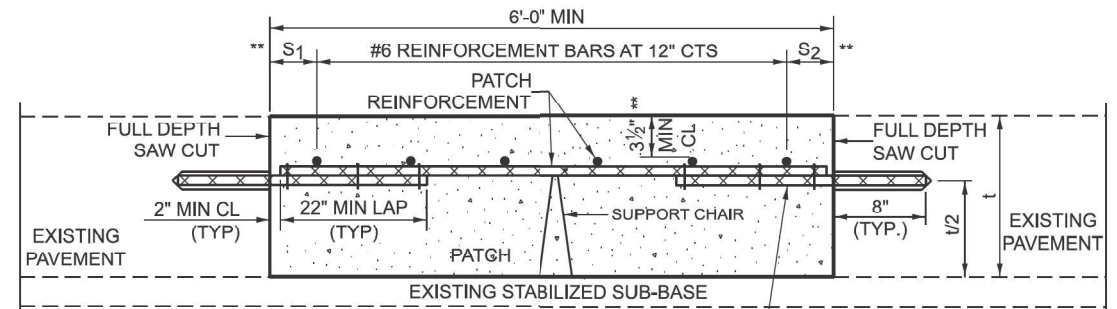
SPACING OF NEW LONGITUDINAL REINFORCEMENT AND NEW LONGITUDINAL TIE BARS SHALL MATCH SPACING OF EXISTING REINFORCEMENT AND SHALL BE TIED TOGETHER WITH A MINIMUM OF TWO TIES PER BAR.

SUPPORT CHAIRS SHALL BE REQUIRED WHENEVER PATCH LENGTH EXCEEDS 6'-0"

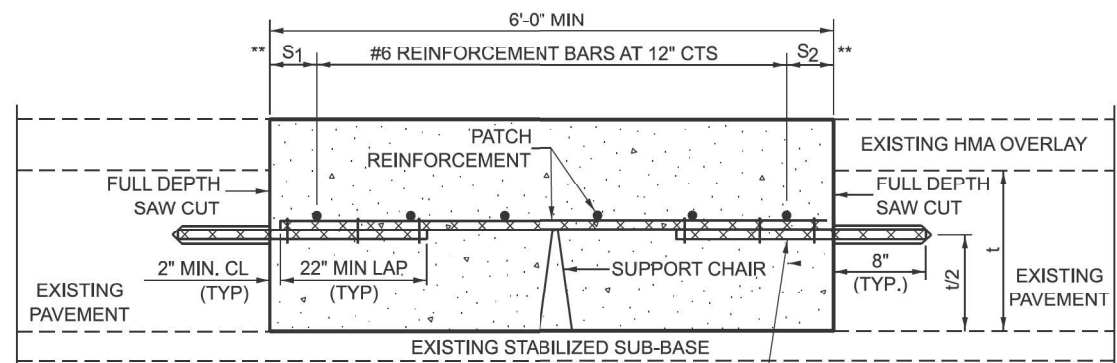
PATCHES GREATER THAN 20 FEET IN LENGTH SHALL REQUIRE AN ADDITIONAL TRANSVERSE SAW CUT EVERY 10 FEET.

* EVERY THIRD INTERSECTION MUST BE TIED. WHEN THE MINIMUM CLEARANCE CANNOT BE OBTAINED WITH THE TRANSVERSE REBAR ON TOP, THEN THE TRANSVERSE REBAR SHALL BE TIED TO THE BOTTOM OF THE LONGITUDINAL REBAR.

** VARIABLES WHERE S_1 AND S_2 ARE $2\frac{1}{2}$ " MIN. AND 12" MAX.



WITHOUT HMA OVERLAY



WITH HMA OVERLAY

**PATCHING DETAIL FOR CLASS A PATCHING
(CRC PAVEMENT)**

**STATE OF ILLINOIS
DEPARTMENT OF TRANSPORTATION**

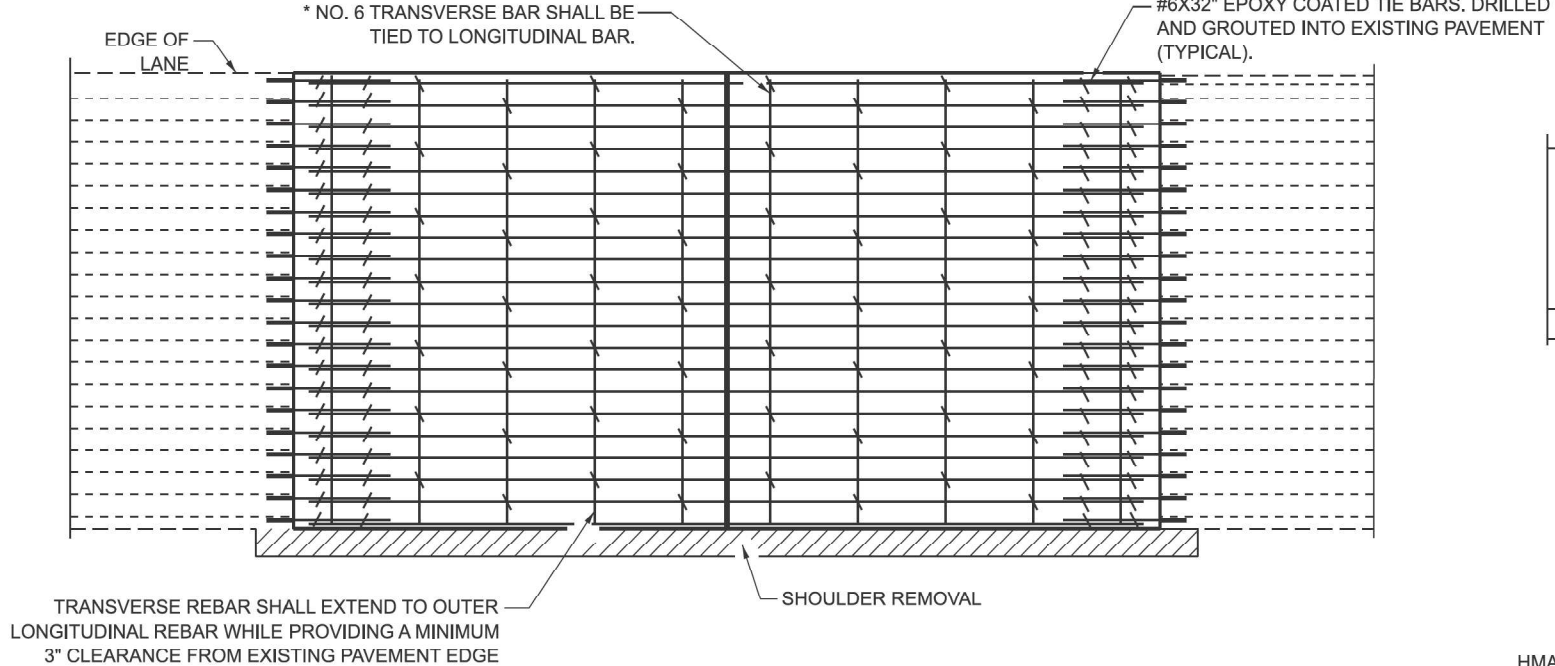
CLASS A PATCHES (SPECIAL) DETAILS

SCALE: 1"=50' SHEET 1 OF 2 SHEETS STA. N/A TO STA. N/A

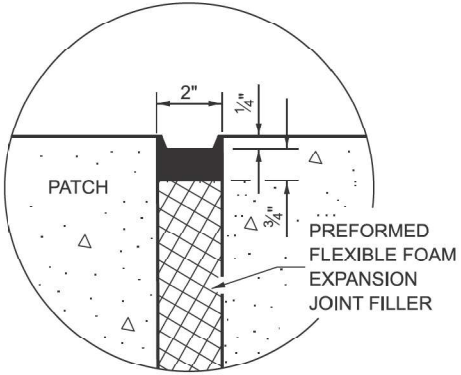
F.A.P. RTE.	SECTION	COUNTY	TOTAL SHEETS	SHEET NO.
322	(28,29-2)RS-1	MARION	22	21
CONTRACT NO. 76U40				
ILLINOIS FED. AID PROJECT				

MODEL: Unnamed Plan-4 - Plan 2 (Sheet)
FILE NAME: p:\dot\sp\pavement\DOT Office\Dir\90RD Projects\B37693\CADD\Drawings\NEW\Proposed\ClassA (Special)

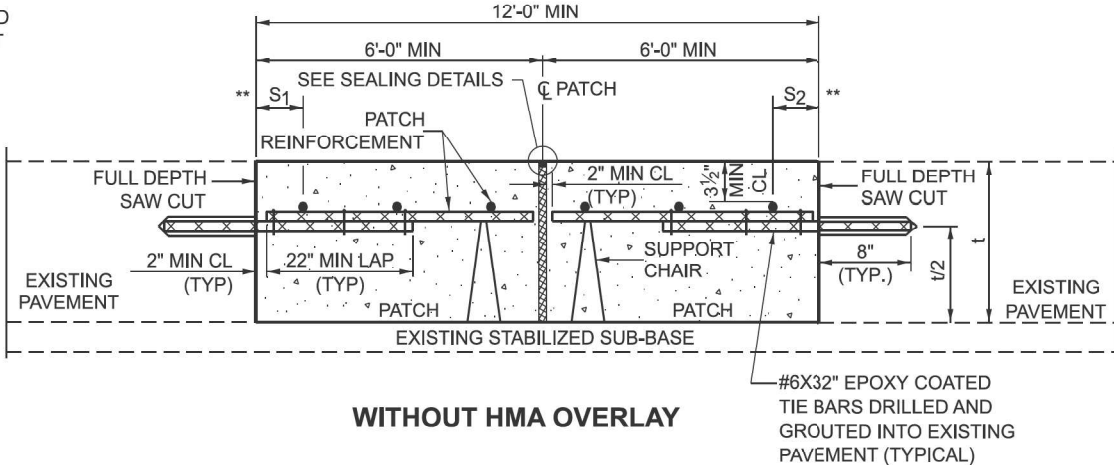
TRANSVERSE EXPANSION JOINTS



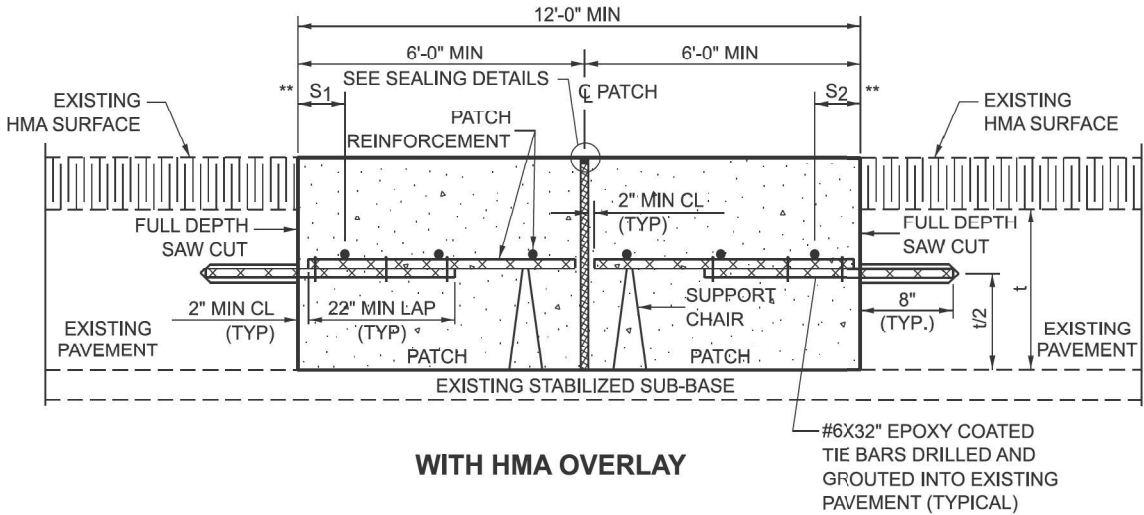
PAVEMENT REINFORCEMENT DETAIL



SEALING DETAIL



WITHOUT HMA OVERLAY



WITH HMA OVERLAY

CLASS A PATCH WITH EXPANSION JOINT

NOTES:

EXISTING LONGITUDINAL REINFORCEMENT SPACING; $\pm 6\frac{1}{2}"$.

SPACING OF NEW LONGITUDINAL REINFORCEMENT AND NEW LONGITUDINAL TIE BARS SHALL MATCH SPACING OF EXISTING REINFORCEMENT AND SHALL BE TIED TOGETHER WITH A MINIMUM OF TWO TIES PER BAR.

SUPPORT CHAIRS SHALL BE REQUIRED WHENEVER PATCH LENGTH EXCEEDS 6'-0"

PATCHES GREATER THAN 20 FEET IN LENGTH SHALL REQUIRE AN ADDITIONAL TRANSVERSE SAW CUT EVERY 10 FEET.

- * EVERY THIRD INTERSECTION MUST BE TIED. WHEN THE MINIMUM CLEARANCE CANNOT BE OBTAINED WITH THE TRANSVERSE REBAR ON TOP, THEN THE TRANSVERSE REBAR SHALL BE TIED TO THE BOTTOM OF THE LONGITUDINAL REBAR.

** VARIABLES WHERE S₁ AND S₂ ARE 2½" MIN. AND 12" MAX.

USER NAME = Brandon.Humphreys	DESIGNED - ____	REVISED - ____	STATE OF ILLINOIS DEPARTMENT OF TRANSPORTATION	CLASS A PATCHES (SPECIAL) DETAILS					F.A.P. RTE.	SECTION	COUNTY	TOTAL SHEETS	SHEET NO.
	DRAWN - ____	REVISED - ____							322	(28,29-2)RS-1	MARION	22	22
PLOT SCALE = 0.16666633" / In.	CHECKED - ____	REVISED - ____		SCALE: 1"=50' SHEET 2 OF 2 SHEETS STA. N/A TO STA. N/A					CONTRACT NO. 76U40				
PLOT DATE = 3/17/2023	DATE - ____	REVISED - ____							ILLINOIS FED. AID PROJECT				

MODEL: Unnamed Plan-7 - Plan 3 (Sheet)
FILE NAME: pw:\ldot-pw.bentley.com\2\WICOT\Documents\DOT Offices\District 8\ORD Projects\D876883\CADDData\CADsheets\NEW\ProposedClassA\Special