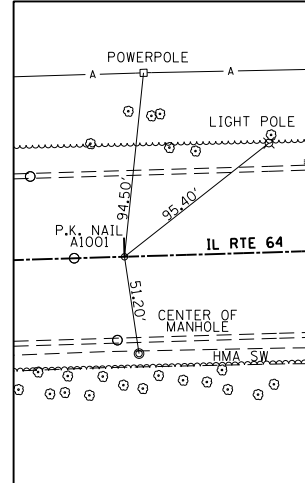
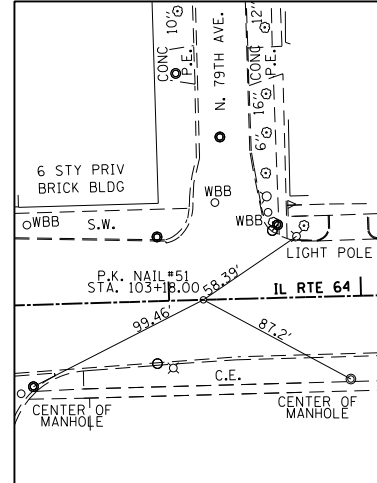


CENTERLINE TIE_IL RTE 64
 BEGIN PROJECT
 P.K. NAIL #A1001
 STA. 92+00
 N 1909660.6218
 E 1122070.1258



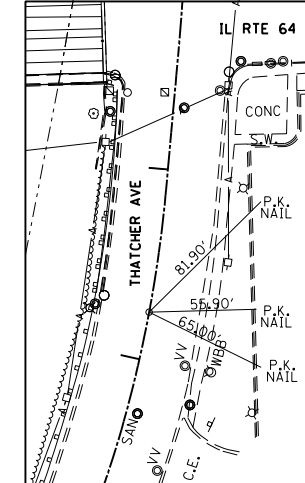
CENTERLINE TIE_IL RTE 64
 END PROJECT
 P.K. NAIL #51
 STA. 103+18.00
 N 1909694.2514
 E 1123187.6198



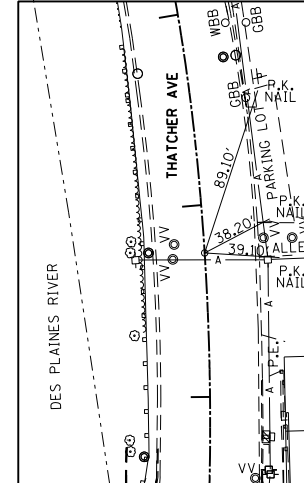
BENCHMARKS

BM "CONTROL POINT #1" IDOT #101
 CROSS CUT IN SIDEWALK @ SE CORNER OF IL 64 (NORTH AVE)
 & THATCHER AVE. 21.23' W. FROM T.S. FOUNDATION, 4.93' S.
 OF CROSS CUT IN CONC. C & G, 6.60' NE OF P.K. IN POWER POLE.
 N 1909635.56
 E 1122899.40
 ELEV=625.23'

CENTERLINE TIE_THATCHER
 BEGIN PROJECT
 P.K. NAIL
 STA. 6+25
 N 1909513.4533
 E 1122851.8032



CENTERLINE TIE_THATCHER
 END PROJECT
 P.K. NAIL
 STA. 9+75
 N 1909862.3123
 E 1122869.6385



ILLINOIS ROUTE 64

THATCHER AVENUE

PROP. CURVE P_THTCH-5
 PI STA. = 12+35.14
 $\Delta = 21^\circ 14' 36''$ (LT)
 D = 5° 12' 31"
 R = 1,100.00'
 T = 206.29'
 L = 407.84'
 E = 19.18'
 e = ----
 T.R. = ----
 S.E. RUN = ----
 P.C. STA. = 10+28.85
 P.T. STA. = 14+36.69

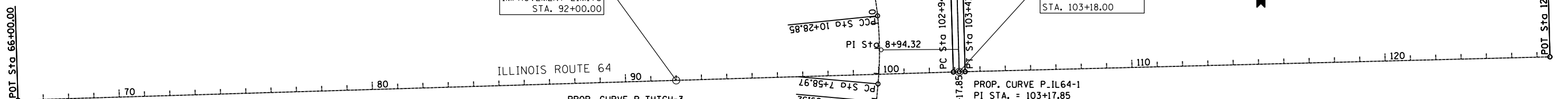
PROP. CURVE P_THTCH-4
 PI STA. = 8+94.32
 $\Delta = 10^\circ 59' 37''$ (LT)
 D = 4° 04' 25"
 R = 1,406.54'
 T = 135.36'
 L = 269.88'
 E = 6.50'
 e = ----
 T.R. = ----
 S.E. RUN = ----
 P.C. STA. = 7+58.97
 P.T. STA. = 10+28.85

PROP. CURVE P_THTCH-3
 PI STA. = 6+28.10
 $\Delta = 10^\circ 26' 15''$ (LT)
 D = 8° 30' 01"
 R = 674.04'
 T = 61.56'
 L = 122.79'
 E = 2.81'
 e = ----
 T.R. = ----
 S.E. RUN = ----
 P.C. STA. = 5+66.53
 P.T. STA. = 6+89.32

PROP. CURVE P_IL64-1
 PI STA. = 103+17.85
 $\Delta = 0^\circ 15' 59''$ (RT)
 D = 0° 34' 23"
 R = 10,000.00'
 T = 23.25'
 L = 46.51'
 E = 0.03'
 e = ----
 T.R. = ----
 S.E. RUN = ----
 P.C. STA. = 102+94.59
 P.T. STA. = 103+41.10

PROP. CURVE P_THTCH-1
 PI STA. = 1+43.98
 $\Delta = 41^\circ 30' 09''$ (RT)
 D = 15° 04' 40"
 R = 380.00'
 T = 143.98'
 L = 275.25'
 E = 26.36'
 e = ----
 T.R. = ----
 S.E. RUN = ----
 P.C. STA. = 0+00.00
 P.T. STA. = 2+75.25

PROP. CURVE P_THTCH-2
 PI STA. = 4+24.27
 $\Delta = 29^\circ 48' 07''$ (LT)
 D = 10° 13' 53"
 R = 560.00'
 T = 149.01'
 L = 291.28'
 E = 19.49'
 e = ----
 T.R. = ----
 S.E. RUN = ----
 P.C. STA. = 2+75.25
 P.T. STA. = 5+66.53



FILE NAME = M:\191-130-100T_IL64\CADD_Sheets\0160J11-sh1-ATB.dgn



| | | |
|------------------------------|-------------------|-----------|
| USER NAME = cesario | DESIGNED - MTC | REVISED - |
| PLOT SCALE = 400.0000' / in. | DRAWN - MTC | REVISED - |
| PLOT DATE = 8/16/2013 | CHECKED - JIP | REVISED - |
| | DATE - 06/07/2013 | REVISED - |

**STATE OF ILLINOIS
 DEPARTMENT OF TRANSPORTATION**

**ILLINOIS ROUTE 64 (NORTH AVE) OVER THE DES PLAINES RIVER
 ALIGNMENT, TIES, AND BENCHMARKS**

SCALE: 1"=200' SHEET NO. 1 OF 1 SHEETS STA. TO STA.

| F.A.P. RTE. | SECTION | COUNTY | TOTAL SHEETS | SHEET NO. |
|---------------------------|----------|--------|--------------|-----------|
| 307 | 541Y-3-B | COOK | 143 | 19 |
| CONTRACT NO. 60J11 | | | | |
| ILLINOIS FED. AID PROJECT | | | | |