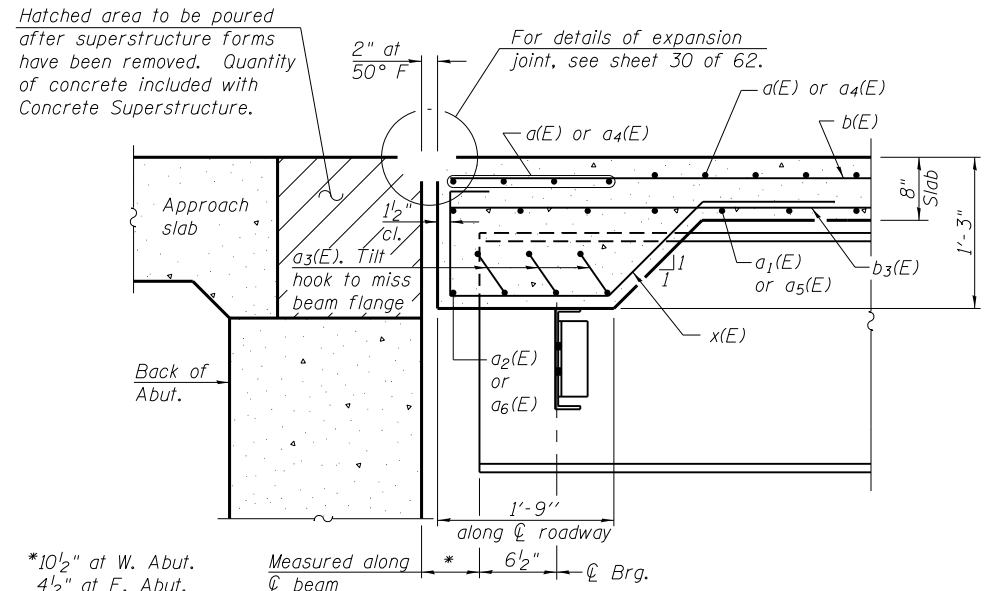


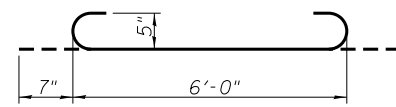
Hatched area to be poured after superstructure forms have been removed. Quantity of concrete included with Concrete Superstructure.



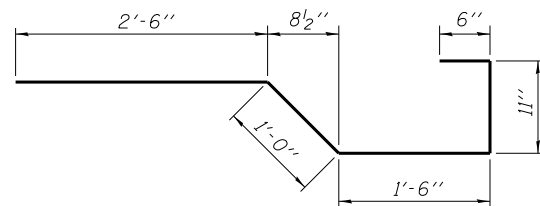
SECTION A-A

*10 1/2" at W. Abut.
4 1/2" at E. Abut.

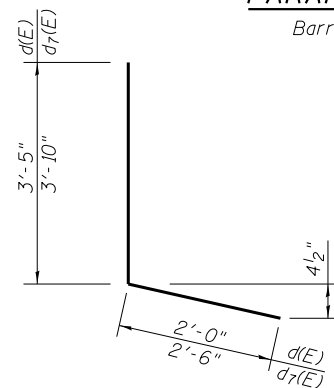
Measured along \bar{c} beam
6 1/2" \bar{c} Brg.



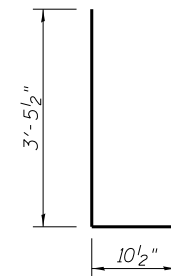
BAR a3(E)



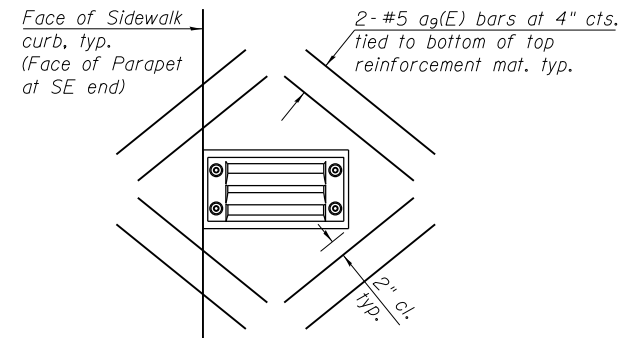
BAR x(E)



BARS d(E) & d7(E)

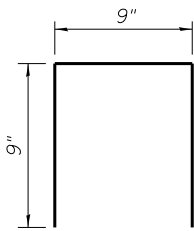


BAR d1(E)

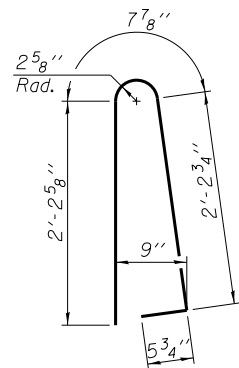


PLAN AT SCUPPER

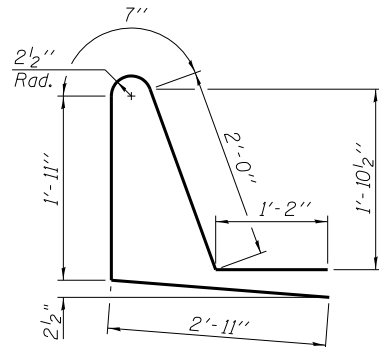
Cut longitudinal reinforcement to clear drainage scuppers.



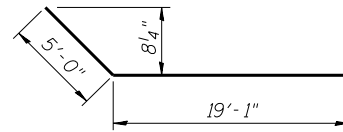
BAR d2(E)



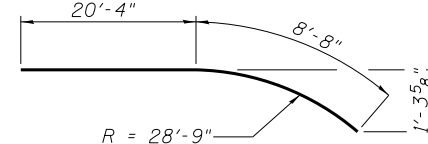
BAR d5(E)



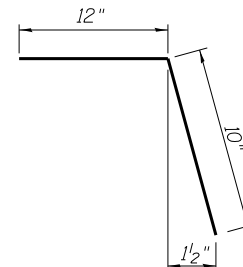
BAR d6(E)



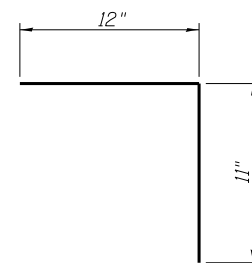
BAR b6(E)



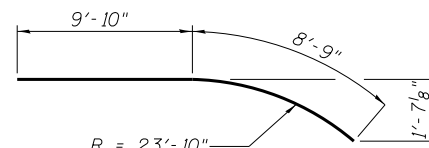
BAR b7(E)



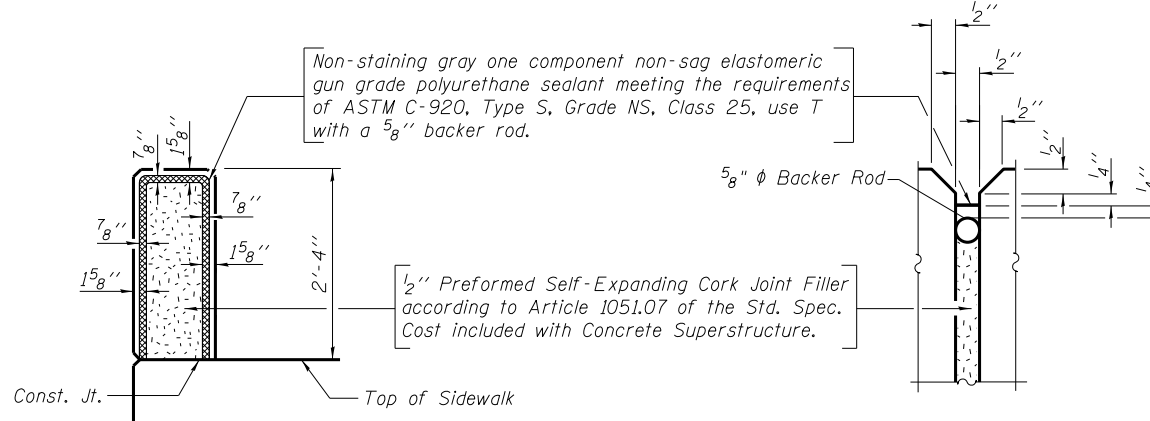
BAR c(E)



BAR c2(E)

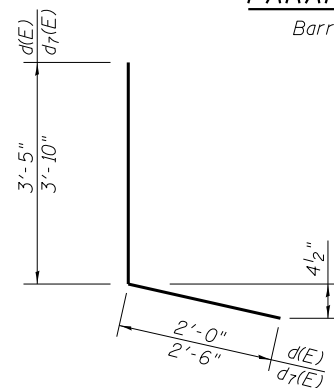


BAR e5(E)



PARAPET JOINT DETAILS

Barrier joint details similar



CONDUIT EXPANSION FITTING

Note:

- All conduit fittings and couplings shall be included in the cost of Conduit Embedded in Structure 2" dia. PVC and Conduit attached to structure 2" dia. Galvanized Steel.
- Use O-Z Gedney AX-200 or approved equal (East side of bridge) (4-Req'd)
- US O-Z Gedney AXB-200 or approved equal (West side of bridge) (1 Req'd)
- Furnished and installed by Bridge Contractor

SUPERSTRUCTURE
BILL OF MATERIAL

Bar	No.	Size	Length	Shape
a(E)	708	#5	26'-1"	—
a1(E)	460	#5	25'-4"	—
a2(E)	4	#5	26'-0"	—
a3(E)	90	#5	7'-2"	—
a4(E)	708	#5	29'-5"	—
a5(E)	460	#5	28'-8"	—
a6(E)	4	#5	29'-3"	—
a7(E)	30	#5	4'-4"	—
a8(E)	69	#5	5'-9"	—
a9(E)	48	#5	2'-0"	—
a10(E)	185	#5	2'-2"	—
b(E)	888	#5	29'-6"	—
b1(E)	106	#6	34'-6"	—
b2(E)	106	#6	36'-8"	—
b3(E)	688	#5	26'-2"	—
b4(E)	8	#5	5'-6"	—
b5(E)	2	#5	17'-0"	—
b6(E)	2	#5	24'-1"	—
b7(E)	8	#5	29'-0"	—
c(E)	192	#5	1'-10"	—
c1(E)	192	#5	5'-7"	—
c2(E)	155	#5	1'-11"	—
c3(E)	169	#5	11'-8"	—
c4(E)	10	#5	2'-0"	—
d(E)	192	#4	5'-5"	—
d1(E)	211	#6	4'-4"	—
d2(E)	82	#4	2'-3"	—
d3(E)	174	#4	3'-4"	—
d4(E)	174	#6	3'-4"	—
d5(E)	23	#5	5'-7"	—
d6(E)	23	#5	8'-7"	—
d7(E)	19	#4	6'-4"	—
e(E)	48	#4	16'-11"	—
e1(E)	32	#4	8'-2"	—
e2(E)	48	#4	15'-5"	—
e3(E)	32	#4	8'-11"	—
e4(E)	16	#4	18'-7"	—
e5(E)	8	#4	18'-7"	—
e6(E)	16	#4	18'-10"	—
e7(E)	10	#4	17'-8"	—
e8(E)	8	#4	19'-6"	—
e9(E)	1	#8	19'-6"	—
x(E)	160	#5	6'-5"	—
Reinforcement Bars, Epoxy Coated		Pound	137,660	
Concrete Superstructure		Cu. Yd.	653.6	
Bridge Deck Grooving		Sq. Yd.	1821	
Protective Coat		Sq. Yd.	2347	

FILE NAME = W:\191-130-100T-1164\CADD_Sheets\Structure\1166011-11-18_SupStsDet.dgn

LE LIN ENGINEERING, LTD.
Consulting Engineers
Springfield, Illinois

USER NAME =	DESIGNED - HP	REVISED
PLOT SCALE =	CHECKED - MTH	REVISED
PLOT DATE = 8/15/2013	DRAWN - AJF	REVISED
	CHECKED - MTH	REVISED

STATE OF ILLINOIS
DEPARTMENT OF TRANSPORTATION

SUPERSTRUCTURE DETAILS
STRUCTURE NO. 016-3035

SHEET NO. 21 OF 62 SHEETS

F.A.P. RTE.	SECTION	COUNTY	TOTAL SHEETS	SHEET NO.
307	541Y-3-B	COOK	143	82
CONTRACT NO. 60J11				
ILLINOIS FED. AID PROJECT				