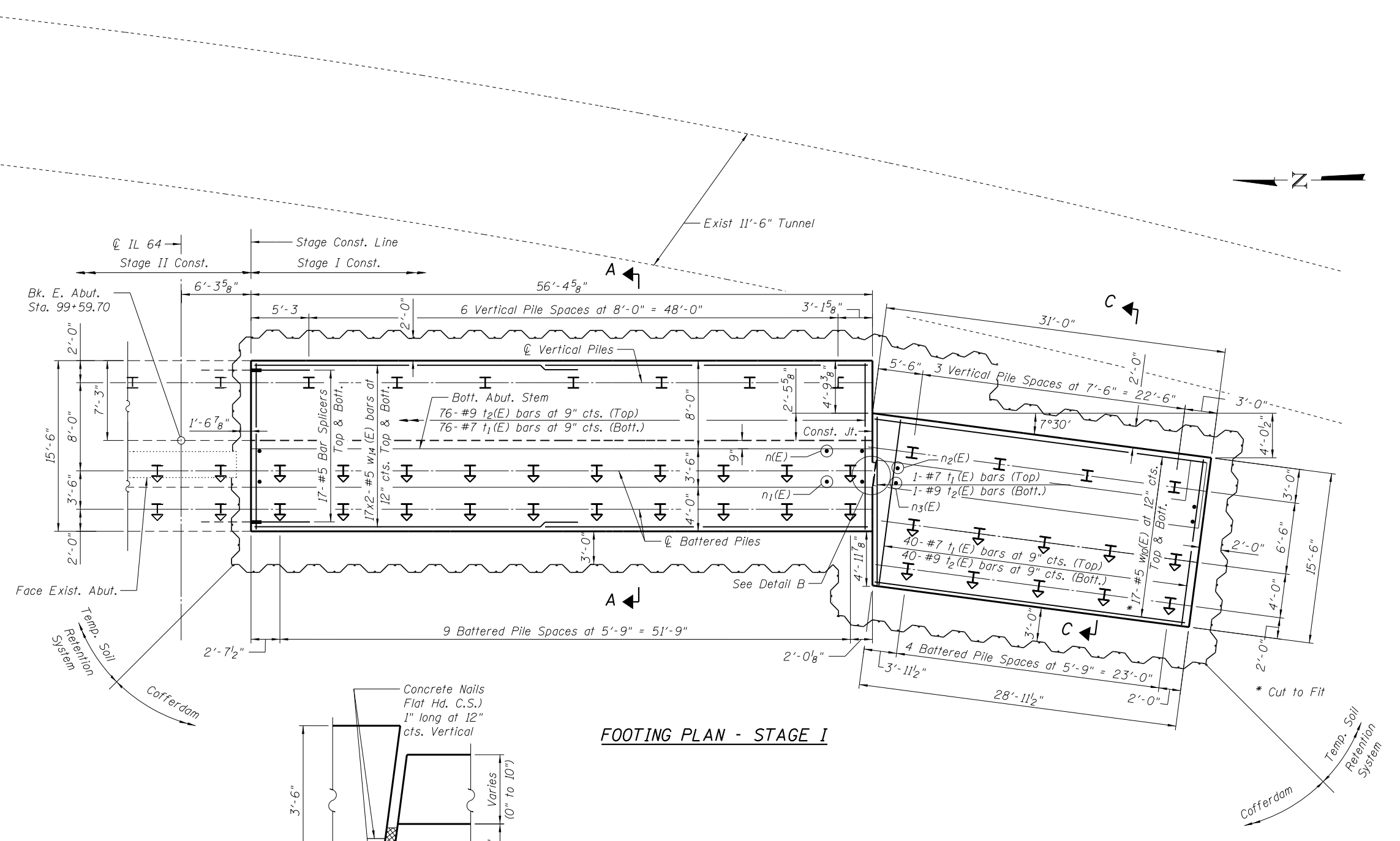
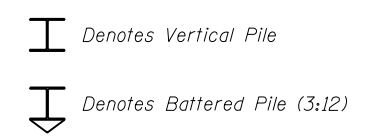


FILE NAME = W:\191-130-1001-IL64\CADD\_Sheets\Structure\166011-ht-33a\_E AbutPlan.dgn

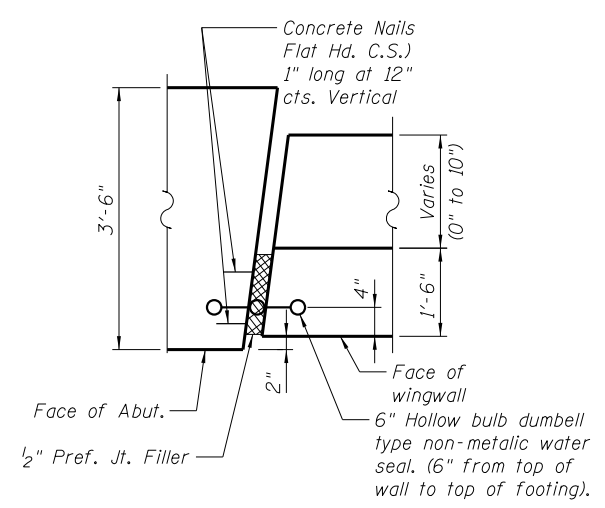


**PILE DATA - STAGE I**

Type: HP 12x53 with Pile Shoes  
 Nominal Required Bearing: 419 kips  
 Factored Resistance Available: 230 kips  
 Est. Length: 31'  
 No. Production Piles: 40  
 No. Test Piles: 1



Notes:  
 E.F. Denotes Each Face.  
 See Sheet 52 of 62 for Pile Details.  
 See Sections A-A, B-B, C-C, and F-F on Sheets 44 and 45 of 62 for Limits of Seal Coat.  
 Bars indicated thus 17x2-#5 etc. indicates 17 lines of bars with 2 lengths per line.  
 Work Sheets 40 thru 45 of 62 together.  
 See Sheet 53 of 62 for Bar Splicer Details.



**FOOTING PLAN - STAGE I**

**DETAIL B**  
**EXPANSION JOINT**  
 South Shown, North Similar

**MINIMUM BAR LAP**

#5 bars = 2'-11"

**Bollinger, Lach & Associates, Inc.**  
 ITASCA, ILLINOIS

USER NAME =	DESIGNED - JMT	REVISED
	CHECKED - JJI	REVISED
PLOT SCALE =	DRAWN - GJE	REVISED
PLOT DATE = 8/16/2013	CHECKED - JJI	REVISED

**STATE OF ILLINOIS**  
**DEPARTMENT OF TRANSPORTATION**

**EAST ABUTMENT FOOTING-STAGE I**  
**STRUCTURE NO. 016-3035**

SHEET NO. 41 OF 62 SHEETS

F.A.P. RTE.	SECTION	COUNTY	TOTAL SHEETS	SHEET NO.
307	541Y-3-B	COOK	143	102
CONTRACT NO. 60J11				

ILLINOIS FED. AID PROJECT