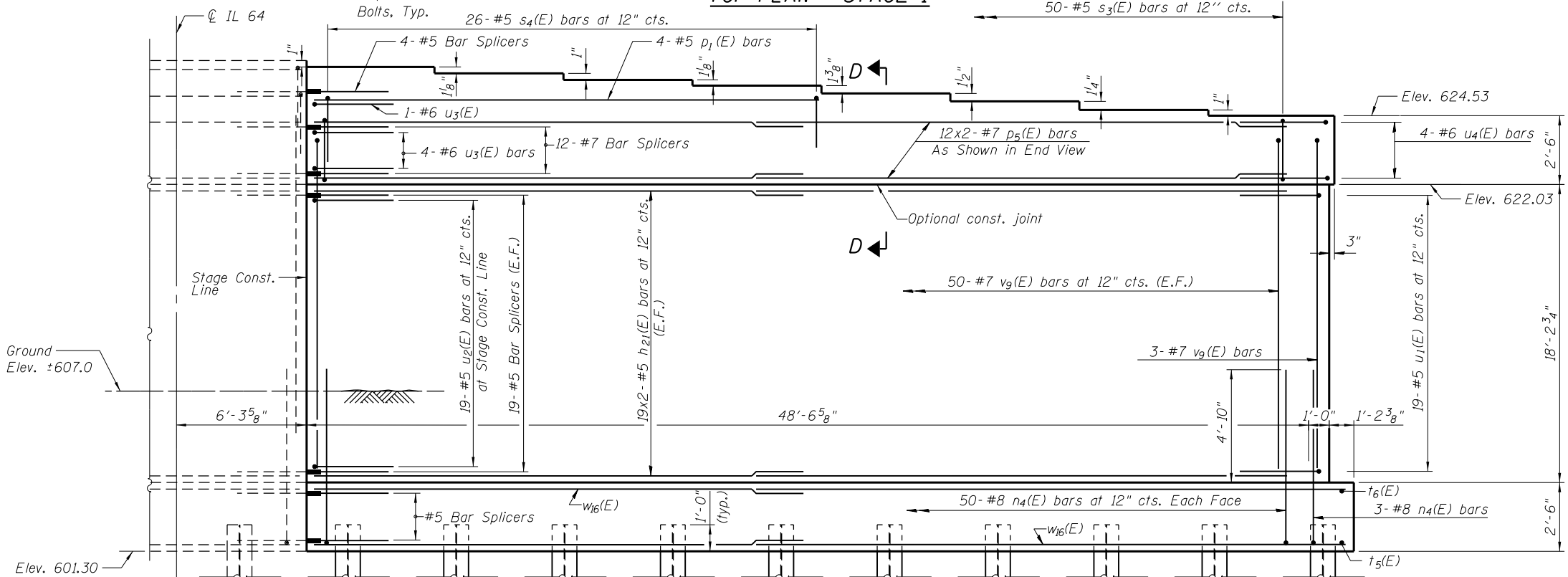
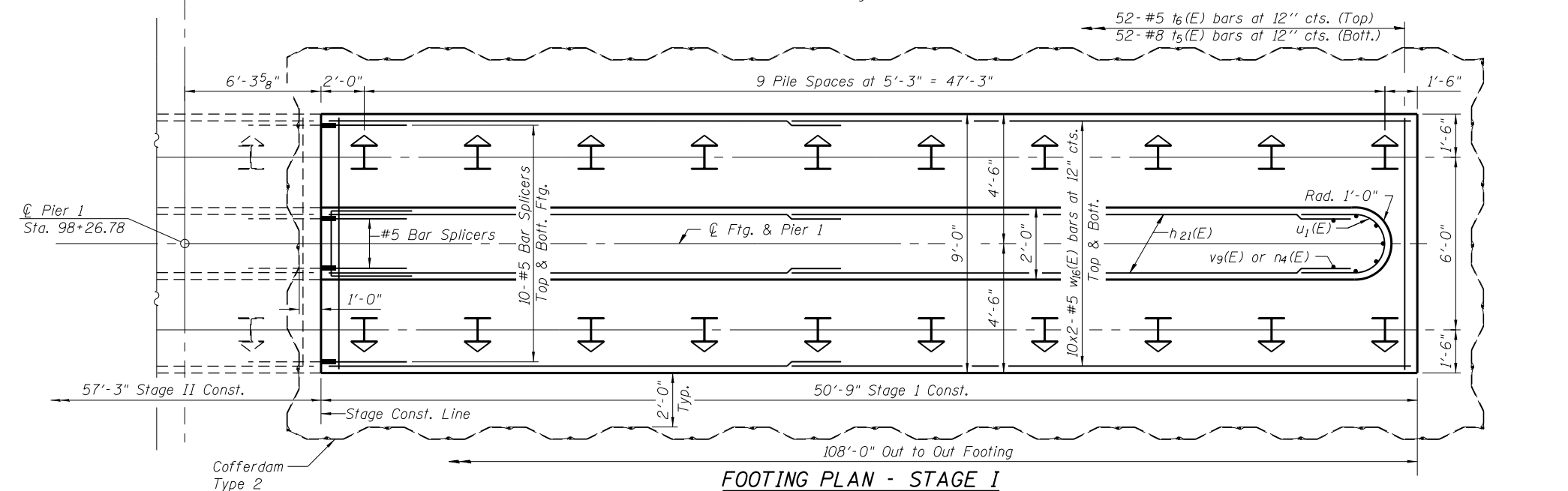


TOP PLAN - STAGE I



ELEVATION - STAGE I
(Looking East)



FOOTING PLAN - STAGE I

**BEARING SEAT
ELEVATION TABLE - STAGE I**

Beam No.	℄ Brg.
9	625.36
10	625.26
11	625.16
12	625.06
13	624.97
14	624.85
15	624.72
16	624.61
17	624.52

PILE DATA - STAGE I

Type: HP 12x53 with Pile Shoes
 Nominal Required Bearing: 419 kips
 Factored Resistance Available: 230 kips
 Est. Length: 40'
 No. Production Piles: 19
 No. Test Piles: 1

↓ Denotes Battered Pile (1:12)

Notes:
 Space reinforcement in cap to miss anchor bolts.
 Pour steps monolithically with cap.
 See sheet 52 of 62 for details of piles.
 See sheet 53 of 62 for Bar Splicer details.
 See sheet 48 of 62 for anchor bolt locations.
 End View and Section D-D.
 Bars indicated thus 4x2-#7 etc. indicates 4 lines of bars with 2 lengths per line.
 E.F. Denotes Each Face.

MINIMUM BAR LAP

#5 Bars = 2'-11"
 #7 Bars = 4'-8"

FILE NAME = W:\191-130-1001-IL64-CADD-Sheets\Structure\166011-Str-37-Pier-1.dgn

Bollinger, Lach & Associates, Inc.
 ITASCA, ILLINOIS

USER NAME =
 PLOT SCALE =
 PLOT DATE = 8/16/2013

DESIGNED - JMT
 CHECKED - JJI
 DRAWN - GM
 CHECKED - JJI

REVISED
 REVISED
 REVISED
 REVISED

**STATE OF ILLINOIS
 DEPARTMENT OF TRANSPORTATION**

**PIER 1 - STAGE I
 STRUCTURE NO. 016-3035**

SHEET NO. 46 OF 62 SHEETS

F.A.P. RTE.	SECTION	COUNTY	TOTAL SHEETS	SHEET NO.
307	541Y-3-B	COOK	143	107

CONTRACT NO. 60J11

ILLINOIS FED. AID PROJECT