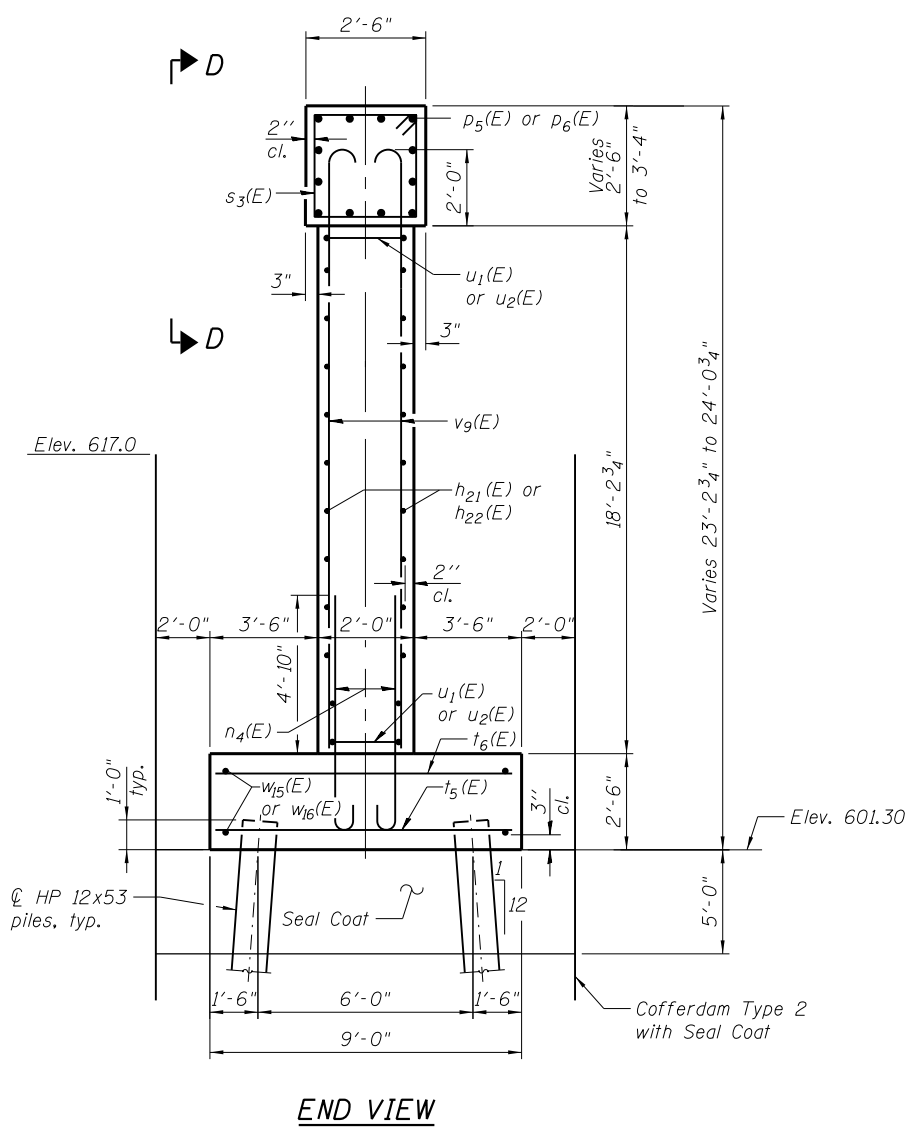
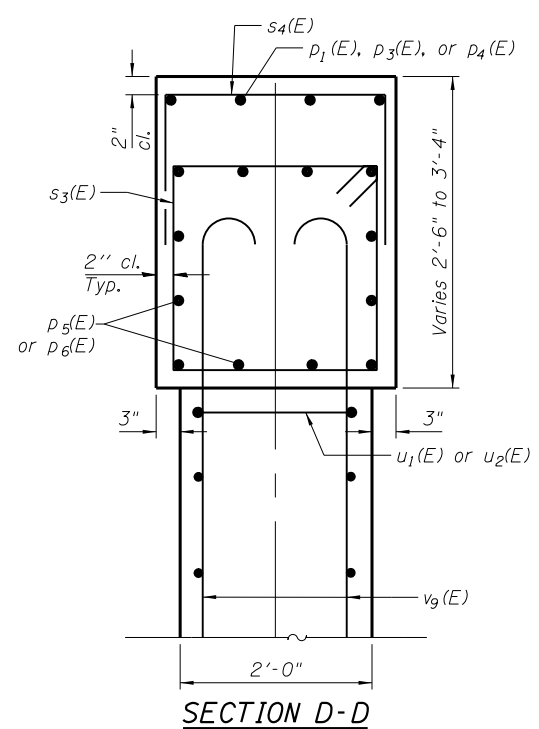


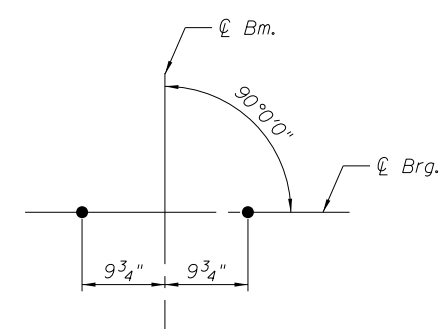
FILE NAME = W:\191-130-100T-11.64\CA00_Sheets\Structure\1160111-ht-38_Pier-1_Details.dgn



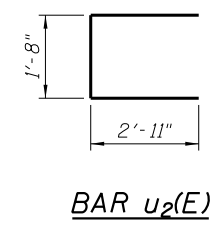
END VIEW



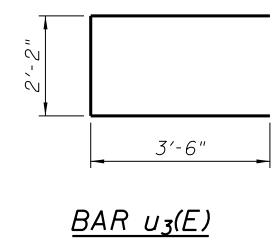
SECTION D-D



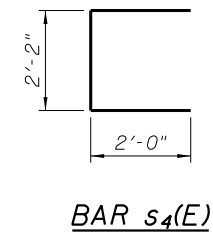
ANCHOR BOLT DETAILS



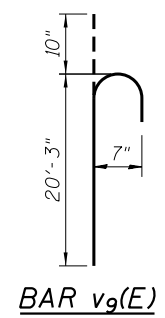
BAR u₂(E)



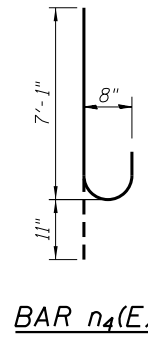
BAR u₃(E)



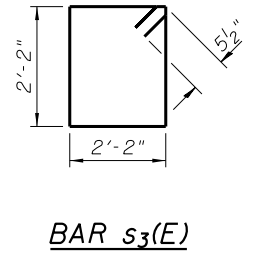
BAR s₄(E)



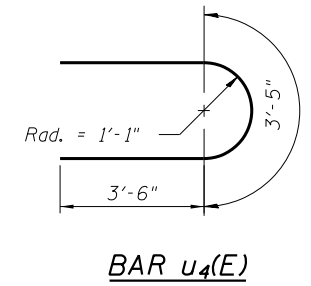
BAR v₉(E)



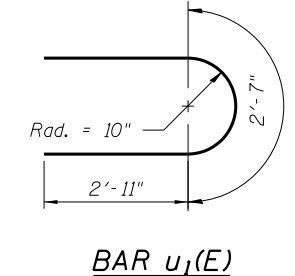
BAR n₄(E)



BAR s₃(E)



BAR u₄(E)



BAR u₁(E)

**PIER 1
BILL OF MATERIAL**

Bar	No.	Size	Length	Shape
h ₂₁ (E)	76	#5	25'-8"	—
h ₂₂ (E)	76	#5	28'-11"	—
n ₄ (E)	218	#8	8'-0"	U
p ₁ (E)	4	#5	24'-6"	—
p ₃ (E)	4	#5	37'-3"	—
p ₄ (E)	4	#5	12'-3"	—
p ₅ (E)	24	#7	26'-7"	—
p ₆ (E)	24	#7	29'-10"	—
s ₃ (E)	106	#5	9'-7"	□
s ₄ (E)	79	#5	6'-2"	U
t ₅ (E)	110	#8	8'-8"	—
t ₆ (E)	110	#5	8'-8"	—
u ₁ (E)	38	#5	8'-5"	U
u ₂ (E)	19	#5	7'-6"	U
u ₃ (E)	5	#6	9'-2"	U
u ₄ (E)	8	#6	10'-5"	U
v ₉ (E)	218	#7	21'-1"	U
w ₁₅ (E)	40	#5	29'-11"	—
w ₁₆ (E)	40	#5	26'-8"	—
Cofferdam Excavation		Cu. Yd.	577	
Concrete Structures		Cu. Yd.	261.7	
Reinforcement Bars, Epoxy Coated		Pound	29,600	
Furnishing Steel Piles HP 12x53		Foot	1640	
Driving Piles		Foot	1640	
Test Pile Steel HP 12x53		Each	1	
Pile Shoes		Each	42	
Cofferdam (Type 2) (Location -1)		Each	1	
Seal Coat Concrete		Cu. Yd.	269.6	

Bollinger, Lach & Associates, Inc.
ITASCA, ILLINOIS

USER NAME =	DESIGNED - JMT	REVISED
PLOT SCALE =	CHECKED - JJI	REVISED
PLOT DATE = 8/16/2013	DRAWN - GJE	REVISED
	CHECKED - JJI	REVISED

**STATE OF ILLINOIS
DEPARTMENT OF TRANSPORTATION**

**PIER 1 DETAILS
STRUCTURE NO. 016-3035**
SHEET NO. 48 OF 62 SHEETS

F.A.P. RTE. 307	SECTION 541Y-3-B	COUNTY COOK	TOTAL SHEETS 143	SHEET NO. 109
CONTRACT NO. 60J11				
ILLINOIS FED. AID PROJECT				