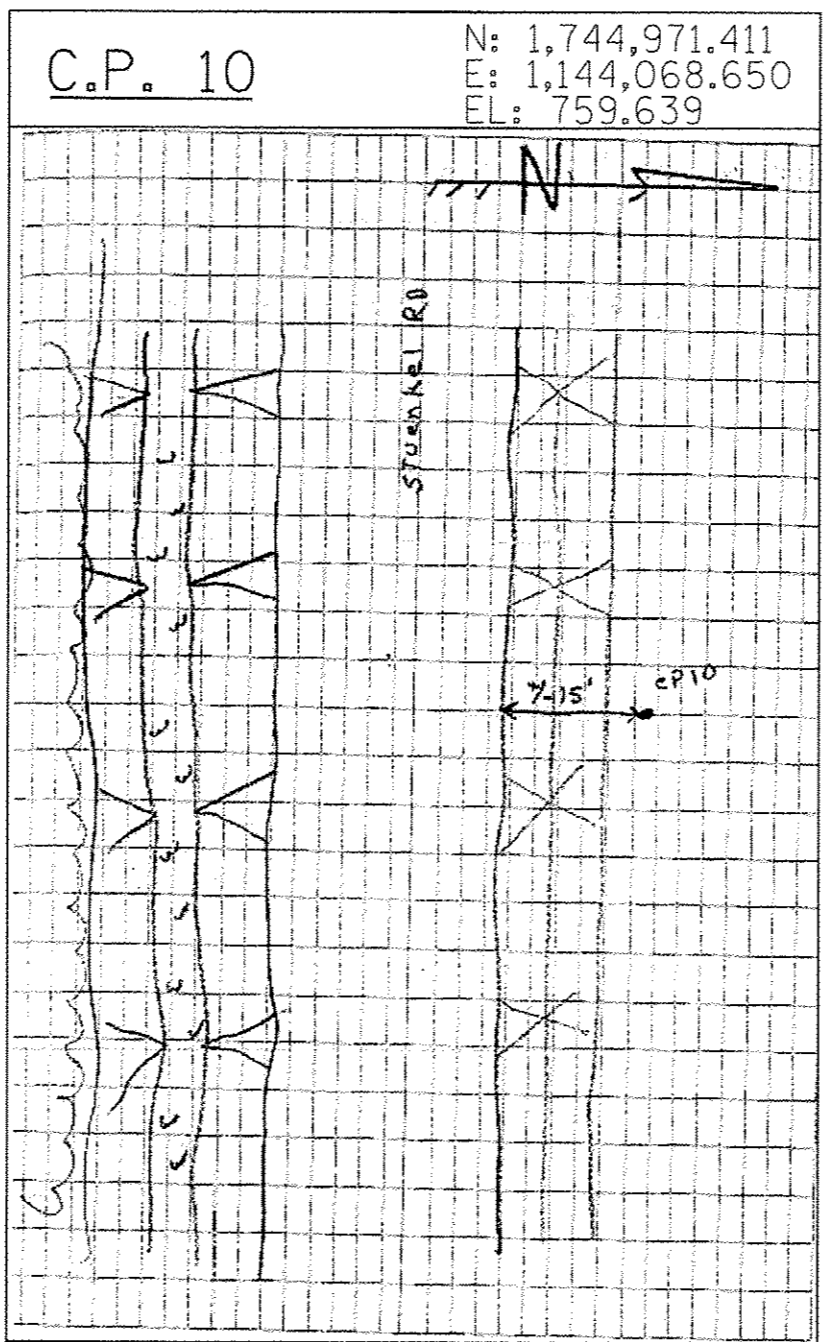
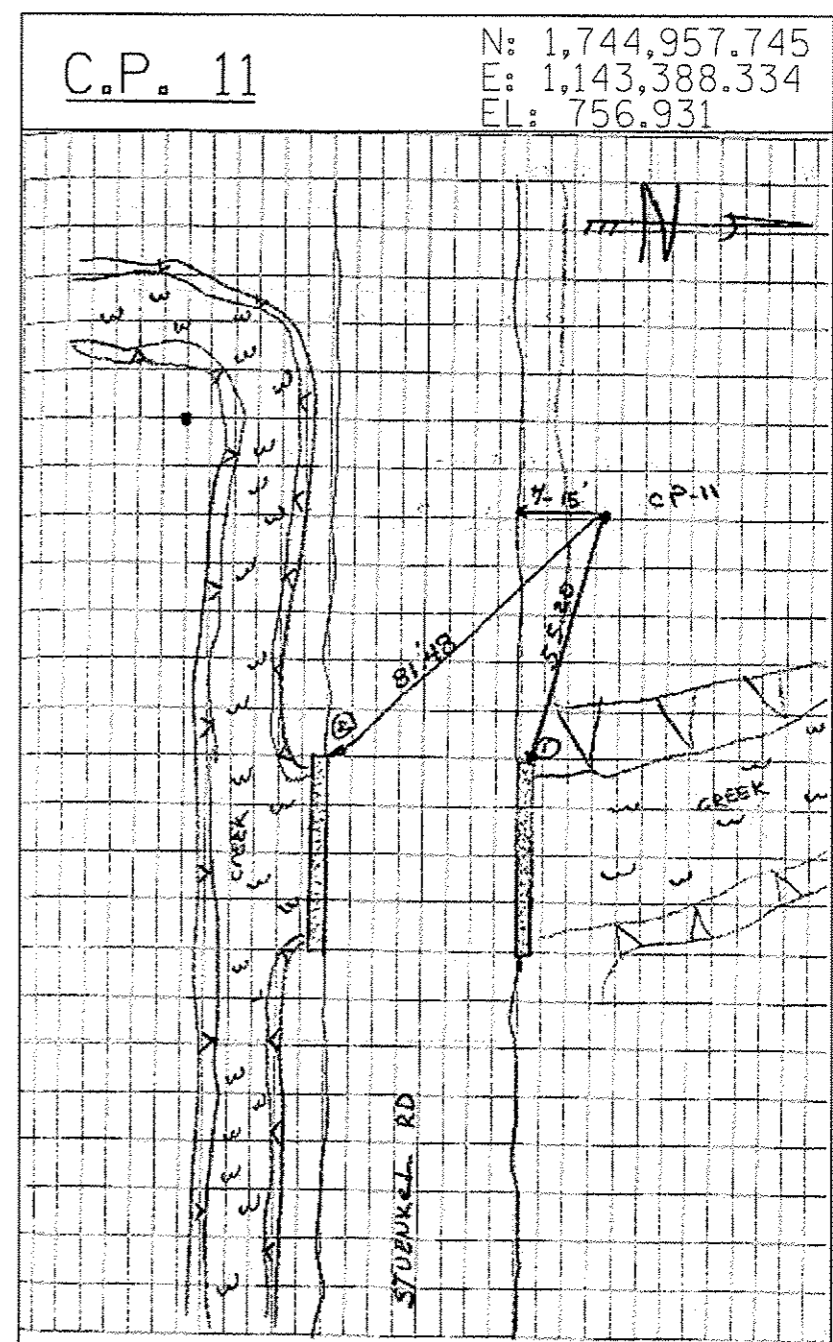


CPT 1 BRASS MON (SECTION COR)  
TIE 1 NW FACE OF STREET LIGHT @ SEX.  
STUENKEL & CENTRAL



CPT 10 IR W/ CENTER PUNCH  
UNTIEABLE  
+/- 500 WEST OF CP1  
+/- 15' NORTH OF GRAVEL RD EDGE



CPT 11 IR W/ CENTER PUNCH  
+/- 15' NORTH OF EDGE OF GRAVEL RD.  
TIE 1: 55.20 NWX OF HEAD WALL  
ON N. SIDE OF STUENKEL RD  
TIE 2: 81.48 NWX OF HEAD WALL  
ON S. SIDE OF STUENKEL RD

TYLIN INTERNATIONAL	USER NAME	DESIGNED - BES	REVISOR	STATE OF ILLINOIS DEPARTMENT OF TRANSPORTATION	STUENKEL ROAD AT I-57 RIDGELAND AVENUE TO CENTRAL AVENUE		F.A.I. RTE.	SECTION	COUNTY	TOTAL SHEETS	SHEET NO.	
	PROJECT SCALE	DRAWN - BES	REVISIONS		57	99-1HB-R1	WILL	679	31			
	PLT DATE	CHECKED - JPM	DATE		05/10/2013	SURVEY TIES FOR CONTROL POINTS		CONTRACT NO. 60L69				
					SCALE: N.T.S.	SHEET 1 OF 5 SHEETS	STA. TO STA.	ILLINOIS FED. AID PROJECT				

P:\6026121-57\_01\_Stuenkel\Road\NC\_31\torahonga\NC3\_01\_511105.dgn