

REMOVE AND REINSTALL HIGH TENSION
CABLE MEDIAN BARRIER - 7500 FT LENGTH
(REMOVE GUARDPOST FOUNDATIONS
AS NECESSARY) (CONTINUED NEXT SHEET)

BOX CULVERT REMOVAL
2 - 7' (SPAN) X 6' (RISE) - 200 LF

1 3/4" SURFACE REMOVAL

SHOULDER REMOVAL (TYP)

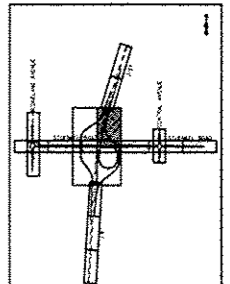
GUARDRAIL REMOVAL (TYP)

STUENKEL ROAD C
FOR STUENKEL ROAD REMOVALS
SEE REMOVAL PLAN SHEETS 2 AND 3 OF 14

NOTE: REMOVAL OF EXISTING
SURFACE INCLUDED IN PATCH

LEGEND:

- PAVEMENT REMOVAL
- AGGREGATE REMOVAL (PAID FOR AS EARTH EXCAVATION)
- FIELD ENTRANCE REMOVAL (PAID FOR AS EARTH EXCAVATION)
- DRAINAGE STRUCTURE REMOVAL
- DRIVEWAY PAVEMENT REMOVAL
- TRAFFIC SIGN REMOVAL
- MAILBOX REMOVAL & TEMPORARILY RELOCATED
- TREE REMOVAL
- TREE REMOVAL (ACRE)
- TREE REMOVAL (UNITS SPECIFIED)
- PAVED SHOULDER REMOVAL
- CCC&G REMOVAL
- CABLE BARRIER REMOVAL
- GUARDRAIL REMOVAL
- FENCE REMOVAL
- STORM SEWER REMOVAL
- PAVEMENT CRACKING & SEATING



0 50 100
SCALE: 1" = 50'-0"

TYLIN INTERNATIONAL

DESIGNED	JTP
DRAWN	JTP
CHECKED	JPM
DATE	05/10/2013

REVISED	10/18/2013
REVISED	
REVISED	
REVISED	

STATE OF ILLINOIS
DEPARTMENT OF TRANSPORTATION

STUENKEL ROAD AT I-57 RIDGELAND AVENUE TO CENTRAL AVENUE
RAMP A, B, D, I-57 REMOVAL PLAN

SCALE: 1" = 50' SHEET 12 OF 14 SHEETS STA. 1454+00 TO STA. 1468+00

F.A.I. RTE.	SECTION	COUNTY	TOTAL SHEETS	SHEET NO.
57	99-JHB-R1	WILL	679	70
CONTRACT NO. 60L69			ILLINOIS FED. AID PROJECT	