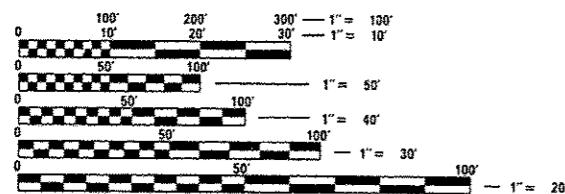
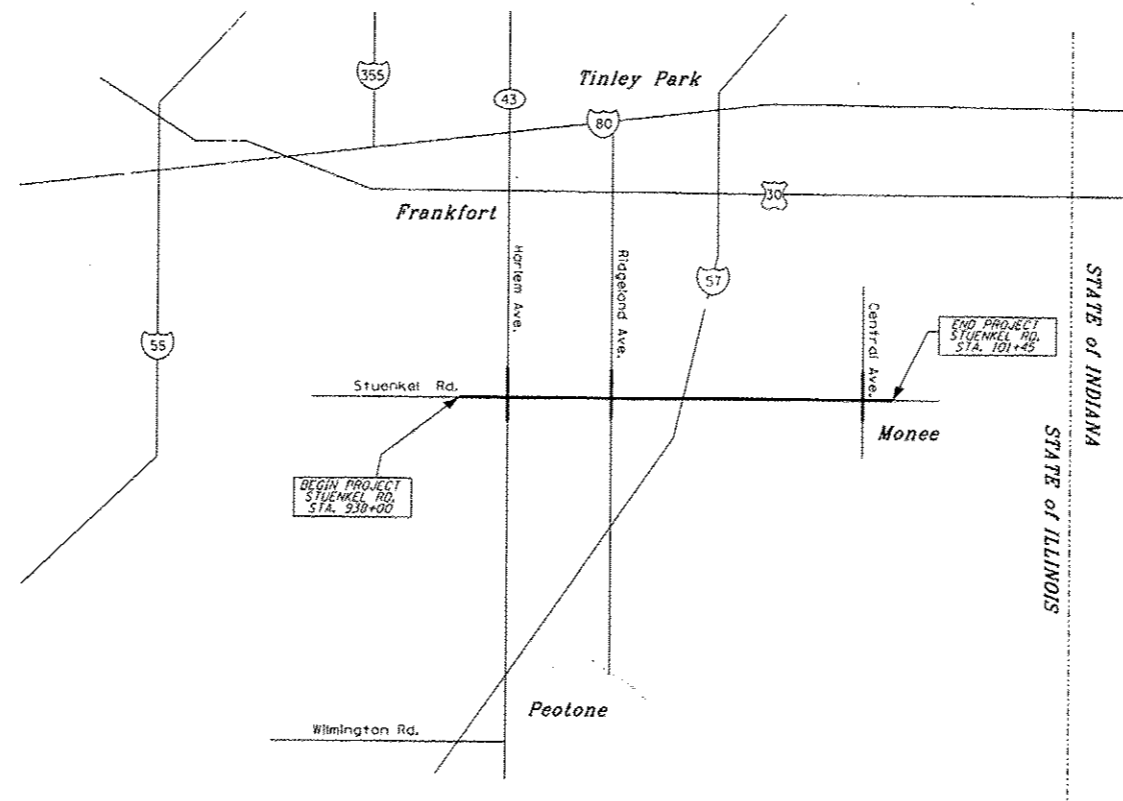


STATE OF ILLINOIS
DEPARTMENT OF TRANSPORTATION
**PLAT OF HIGHWAYS
FOR PROPOSED
FEDERAL AID HIGHWAY**

ROUTE: I-57
SECTION:
JOB NO.: R91-037-09
COUNTY: WILL
LIMITS: STUENKEL ROAD

F.A. RTE.	SECTION	COUNTY	TOTAL SHEETS	SHEET NO.
		WILL	21	1
FED. ROAD DIST. NO.	ILLINOIS	CONTRACT NO.		



FULL SIZE PLANS HAVE BEEN PREPARED USING STANDARD ENGINEERING SCALES. REDUCED SIZED PLANS WILL NOT CONFORM TO STANDARD SCALES. IN MAKING MEASUREMENTS ON REDUCED PLANS, THE ABOVE SCALES MAY BE USED.

J.U.L.I.E.
JOINT UTILITY LOCATION INFORMATION FOR EXCAVATION
1-800-892-0123
OR 811

PROJECT ENGINEER
PROJECT MANAGER

CONTRACT NO.

RUETTIGER, TONELLI & ASSOCIATES, INC.
Land Surveyors/Engineers/Planners/Landscape Architects/G.I.S. Consultants
2174 ONEIDA STREET
JOLIET, ILLINOIS 60435
PH. (815) 744-6600 FAX (815) 744-0101

RECEIVED
SEP 11 2012
PLATS & LEGALS.

APPROVED _____	20 _____
LOCAL AGENCY OFFICIAL	
APPROVED _____	20 _____
ENGINEER OF LAND ACQUISITION	
APPROVED _____	20 _____
ENGINEER OF LOCAL ROADS & STREETS	
APPROVED _____	20 _____
DISTRICT ENGINEER	
STATE OF ILLINOIS DEPARTMENT OF TRANSPORTATION	

**PRINTED BY THE AUTHORITY
OF THE STATE OF ILLINOIS** 679 | 234

PROJECT LENGTH = 13345.34 L.F. = 2.53 MILES STUENKEL RD.