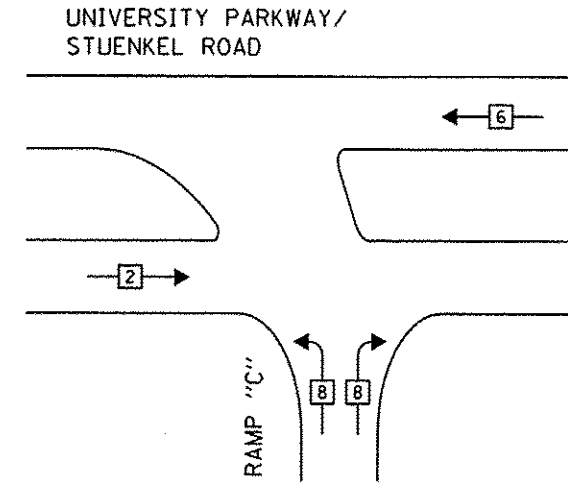


SCHEDULE OF QUANTITIES

QUANTITY	UNIT	ITEM
17.5	SO FT	SIGN PANEL - TYPE 1
18.75	SO FT	SIGN PANEL - TYPE 2
1	EACH	SERVICE INSTALLATION - POLE MOUNTED
833	FOOT	UNDERGROUND CONDUIT, GALVANIZED STEEL, 2" DIA.
140	FOOT	UNDERGROUND CONDUIT, GALVANIZED STEEL, 2 1/2" DIA.
213	FOOT	UNDERGROUND CONDUIT, GALVANIZED STEEL, 3" DIA.
402	FOOT	UNDERGROUND CONDUIT, GALVANIZED STEEL, 4" DIA.
7	EACH	HANDHOLE
1	EACH	FULL-ACTUATED CONTROLLER AND TYPE V CABINET
1	EACH	HEAVY-DUTY HANDHOLE
1	EACH	DOUBLE HANDHOLE
1	EACH	TRANSCEIVER-FIBER OPTIC
264	FOOT	ELECTRIC CABLE IN CONDUIT, SIGNAL NO. 14 2C
** 914	FOOT	ELECTRIC CABLE IN CONDUIT, SIGNAL NO. 14 3C
2685	FOOT	ELECTRIC CABLE IN CONDUIT, SIGNAL NO. 14 5C
2030	FOOT	ELECTRIC CABLE IN CONDUIT, LEAD-IN, NO. 14 1 PAIR
67	FOOT	ELECTRIC CABLE IN CONDUIT, SERVICE, NO. 6 2C
950	FOOT	ELECTRIC CABLE IN CONDUIT, EQUIPMENT GROUNDING CONDUCTOR, NO. 6 1C
3	EACH	TRAFFIC SIGNAL POST, GALVANIZED STEEL 14 FT.
1	EACH	STEEL MAST ARM ASSEMBLY AND POLE 20 FT.
1	EACH	STEEL MAST ARM ASSEMBLY AND POLE 30 FT.
1	EACH	STEEL COMBINATION MAST ARM ASSEMBLY AND POLE 30 FT.
1	EACH	STEEL COMBINATION MAST ARM ASSEMBLY AND POLE 34 FT.
12	FOOT	CONCRETE FOUNDATION, TYPE A
4	FOOT	CONCRETE FOUNDATION, TYPE C
10	FOOT	CONCRETE FOUNDATION, TYPE E 30-INCH DIAMETER
33	FOOT	CONCRETE FOUNDATION, TYPE E 36-INCH DIAMETER
8	EACH	SIGNAL HEAD, LED, 1-FACE, 3-SECTION, MAST ARM MOUNTED
4	EACH	SIGNAL HEAD, LED, 1-FACE, 3-SECTION, BRACKET MOUNTED
8	EACH	TRAFFIC SIGNAL BACKPLATE, LOUVERED, ALUMINUM
7	EACH	INDUCTIVE LOOP DETECTOR
350	FOOT	PREFORMED DETECTOR LOOP
• 2	EACH	LIGHT DETECTOR
• 1	EACH	LIGHT DETECTOR AMPLIFIER
• 636	FOOT	EMERGENCY VEHICLE PRIORITY SYSTEM LINE SENSOR CABLE, NO. 20 3/C
1	EACH	UNINTERRUPTABLE POWER SUPPLY, SPECIAL

• 100% OF THE COST TO THE VILLAGE OF UNIVERSITY PARK
 ** 636' IS USED FOR CONFIRMATION BEACONS (TO BE PAID FOR BY THE VILLAGE OF UNIVERSITY PARK) AND 278' IS USED FOR PEDESTRIAN SIGNAL HEADS

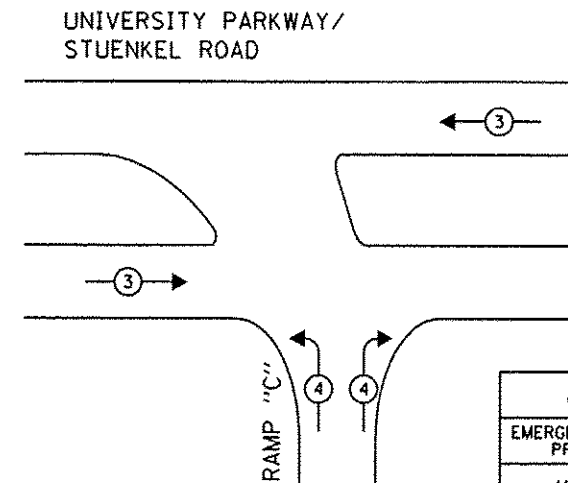
CONTROLLER SEQUENCE



LEGEND

- ← ⊙ → DUAL ENTRY PHASE
- ← ⊠ → SINGLE ENTRY PHASE
- ◊ O.L. OVERLAP
- ← ⊙ → PEDESTRIAN PHASE
- NUMBER REFERS TO ASSOCIATED PHASE

PHASE DESIGNATION DIAGRAM



EMERGENCY VEHICLE PREEMPTORS		
EMERGENCY VEHICLE PREEMPTOR	3	4
MOVEMENT	↔	↗ ↘

EMERGENCY VEHICLE PREEMPTION SEQUENCE

I:\3271\DCAN_CADD_Sheets\DWG\60L69-sht-15-15.dgn 26-DEC-2013 14:57



USER NAME • kprajapati	DESIGNED - MC	REVISED Δ- ADDENDUM 1 1/03/14
PLT SCALE • 40,000000/1.000000	DRAWN - MC	REVISED -
PLT DATE • 26-DEC-2013 14:57	CHECKED - KGP/YD	REVISED -
	DATE - 05/09/2013	REVISED -

**STATE OF ILLINOIS
DEPARTMENT OF TRANSPORTATION**

**SCHEDULE OF QUANTITIES, PHASE DESIGNATION DIAGRAM,
AND EMERGENCY VEHICLE PREEMPTION SEQUENCE
STUENKEL ROAD AT RAMP C**

F.A.I. RTE.	SECTION	COUNTY	TOTAL SHEETS	SHEET NO.
57	99-IHB-R	WILL	679	320
				CONTRACT NO. 60L69
ILLINOIS FED. AID PROJECT				

1 ENTIRE SHEET REVISED