

GENERAL NOTES:

Reinforcement Bars designated (E) shall be epoxy coated.

For backfilling and embankment, see Standard Specifications.

Layout of stone riprap may be varied in the field to suit ground conditions as directed by the engineer.

Excavation required for construction of the culvert as shown in these plans and in accordance with the Standard Specifications shall be included in the cost of Concrete Box Culverts. Excavation for Soldier Pile walls shall be paid for as "Structure Excavation".

The Contractor is responsible for the design and performance of the lagging using no less than 3 in. nominal rough-sawn thickness and timber with a minimum allowable bending stress of 1000 psi.

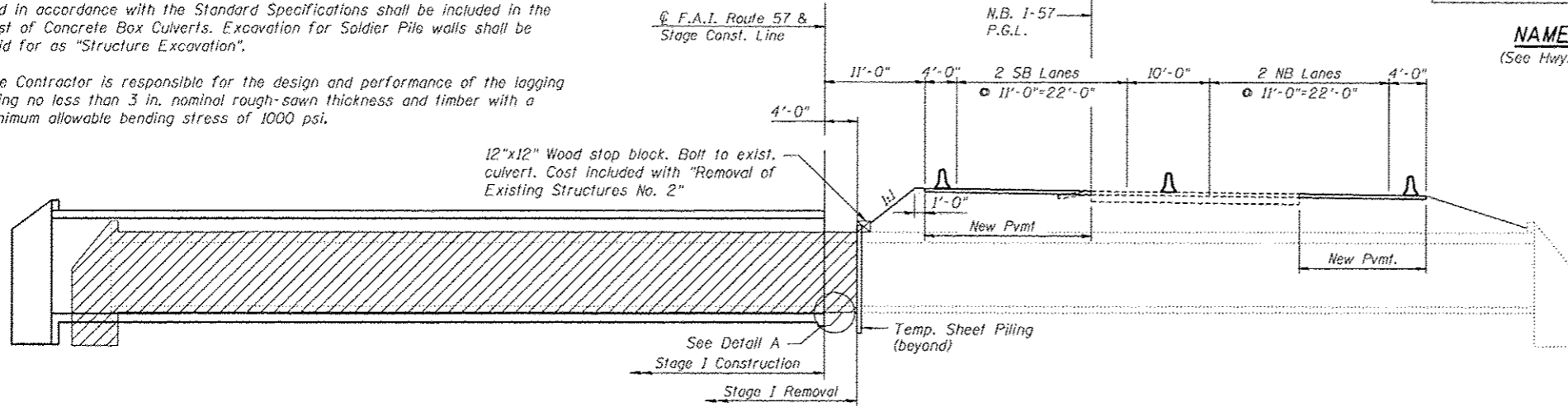
STATION 1463+36.83
 BUILT 20... BY
 STATE OF ILLINOIS
 F.A.I. 57 SEC. 99-1HB-R1
 LOADING HL-93
 STR. NO. 099-0608

TOTAL BILL OF MATERIAL

Item	Unit	Total
Stone Rip Rap, Class A4	Sq Yd	396
Filter Fabric	Sq Yd	396
Removal of Existing Structures No. 2	Each	1
Structure Excavation	Cu Yd	30
Concrete Structures	Cu Yd	9.1
Stud Shear Connectors	Each	86
Reinforcement Bars	Pound	244,180
Reinforcement Bars, Epoxy Coated	Pound	1,110
Bar Splicers	Each	152
Name Plates	Each	1
Concrete Box Culverts	Cu Yd	1,003.2
Geocomposite Wall Drain	Sq Yd	8
Driving Soldier Piles	Foot	156
Permanent Steel Sheet Piling	Sq Ft	919
Untreated Timber Lagging	Sq Ft	199
Furnishing Soldier Piles (HP Section)	Foot	156
Temporary Sheet Piling	Sq Ft	531

NAME PLATE

(See Hwy. Std. 515001)



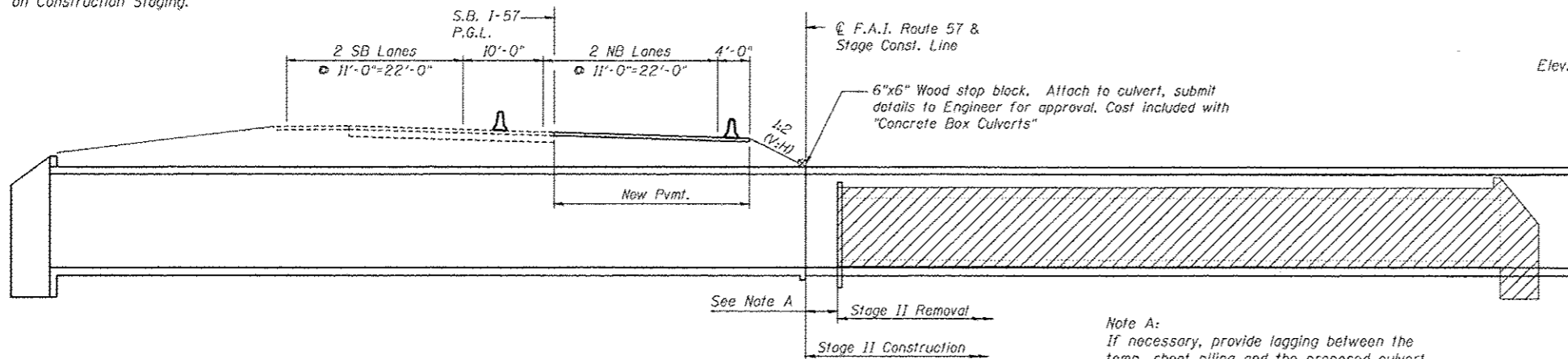
12"x12" Wood stop block. Bolt to exist. culvert. Cost included with "Removal of Existing Structures No. 2"

Note:

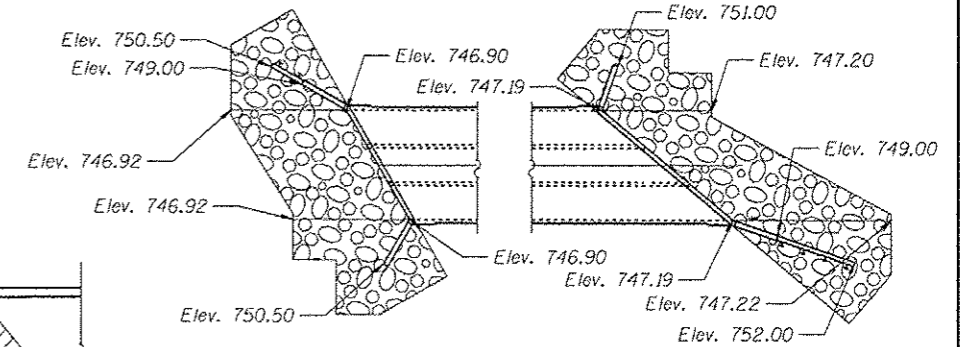
See Roadway Plans for additional information on Construction Staging.

STAGE I REMOVAL AND CONSTRUCTION

(Dimensions are Radial to C F.A.I. Route 57 unless noted)



6"x6" Wood stop block. Attach to culvert, submit details to Engineer for approval. Cost included with "Concrete Box Culverts"

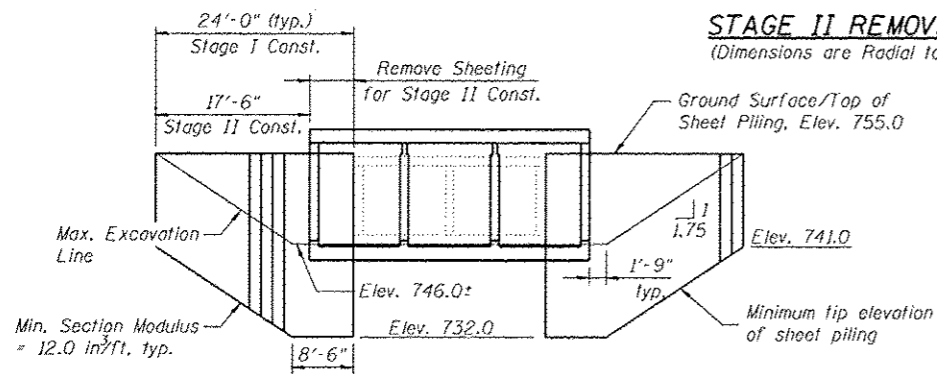


RIPRAP LAYOUT

(Showing top of riprap elevations)

STAGE II REMOVAL AND CONSTRUCTION

(Dimensions are Radial to C F.A.I. Route 57 unless noted)



ELEVATION-TEMPORARY SHEET PILING

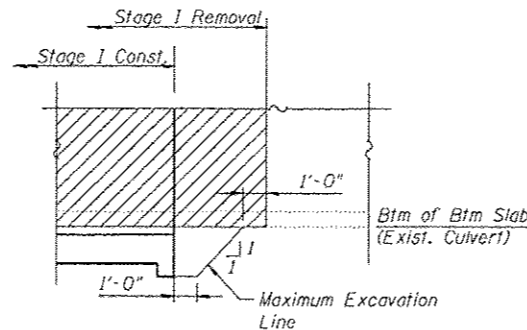
(Slopes and Distances shown parallel to C I-57)

If the Contractor chooses to alter the temporary cantilevered sheet pile design requirements shown on the plans, a design submittal including plan details and calculations will be required for review and acceptance by the Engineer.

Note A:
 If necessary, provide lagging between the temp. sheet piling and the proposed culvert. Provide details to the Engineer for approval. Cost included with "Temporary Sheet Piling".

LEGEND

Denotes Removal



DETAIL A

INDEX OF SHEETS

- SC-1 General Plan
- SC-2 General Notes, Index of Sheets & Bill of Material
- SC-3 Culvert Plan and Details - 1
- SC-4 Culvert Plan and Details - 2
- SC-5 Culvert Sections and Details - 1
- SC-6 Culvert Sections and Details - 2
- SC-7 Culvert Sections and Details - 3
- SC-8 Culvert Sections and Details - 4
- SC-8a Soldier Pile Wall Details
- SC-8b HP Pile Details
- SC-8c Bar Splicer Assembly and Mechanical Splicer Details
- SC-9 Boring Logs
- SC-10 Boring Logs

FILE NAME # TYLIN INTERNATIONAL	USER NAME #	DESIGNED - SP	REVISION 1/6/2014 S.P.	STATE OF ILLINOIS DEPARTMENT OF TRANSPORTATION	GENERAL NOTES, INDEX OF SHEETS & BILL OF MATERIAL STRUCTURE NO. 099-0608	F.A.I. RTE. 57	SECTION 99-1HB-R1	COUNTY WILL.	TOTAL SHEETS 679	SHEET NO. 374
	PLOT SCALE #	DRAWN - PK	REVISION			CONTRACT NO. 60L69			ILLINOIS FED. AID PROJECT	
PLOT DATE #	CHECKED - SP	REVISION	SHEET NO. SC-2 OF SC-10 SHEETS							

△ Entire Sheet Revised

A:\020201-57-9-stuenvet\structural\sc-2\time-change\culverts\current drawings\515001-2014\sc-2.dwg 4-13-2014