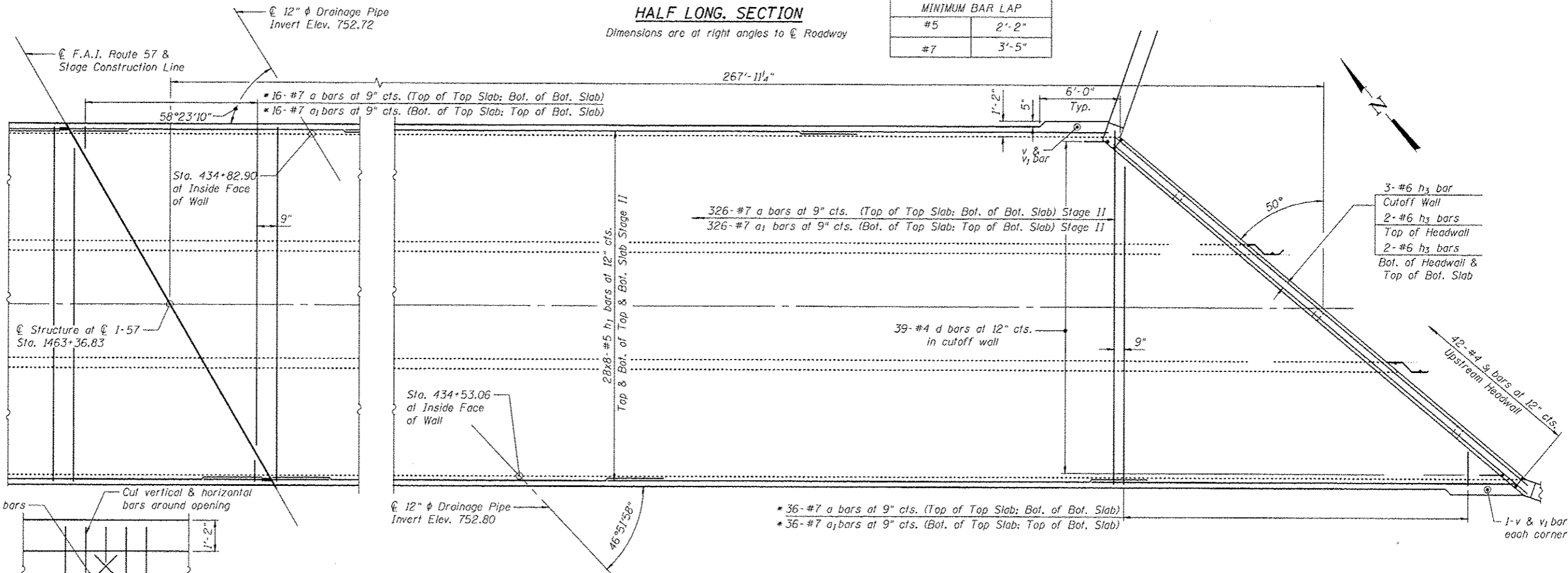


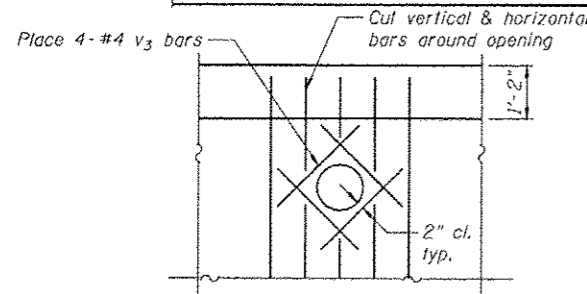
HALF LONG SECTION

Dimensions are at right angles to $\text{\textcircled{C}}$ Roadway

MINIMUM BAR LAP	
#5	2'-2"
#7	3'-5"



DETAIL A



Notes:
 * Order a , a_1 bars full length. Cut to fit skew and use remainder of bar in same mat at same end.
 A distance of half the length of the wingwall but not less than six feet of the barrel shall be poured monolithically with the wingwalls.
 Bars indicated thus 12x4-#5 etc. indicates 12 lines of bars with 4 lengths per line.
 For wingwall reinforcement, see sheet SC-6 of SC-10

FILE NAME = TYLIN INTERNATIONAL	USER NAME =	DESIGNED - RL	REVISION 1/6/2014 S.P.	STATE OF ILLINOIS DEPARTMENT OF TRANSPORTATION	CULVERT PLAN AND DETAILS - 2 STRUCTURE NO. 099-0608	F.A.I. RTE. = 57	SECTION = 99-1HB-RI	COUNTY = WILL	TOTAL SHEETS = 679	SHEET NO. = 376
	PLOT SCALE =	DRAWN - TB/PK	REVISION			CONTRACT NO. 60L69				
	PLOT DATE =	CHECKED - AMD	REVISION			ILLINOIS FED. AID PROJECT				
	Entire Sheet Revised					SHEET NO. SC-4 OF SC-10 SHEETS				