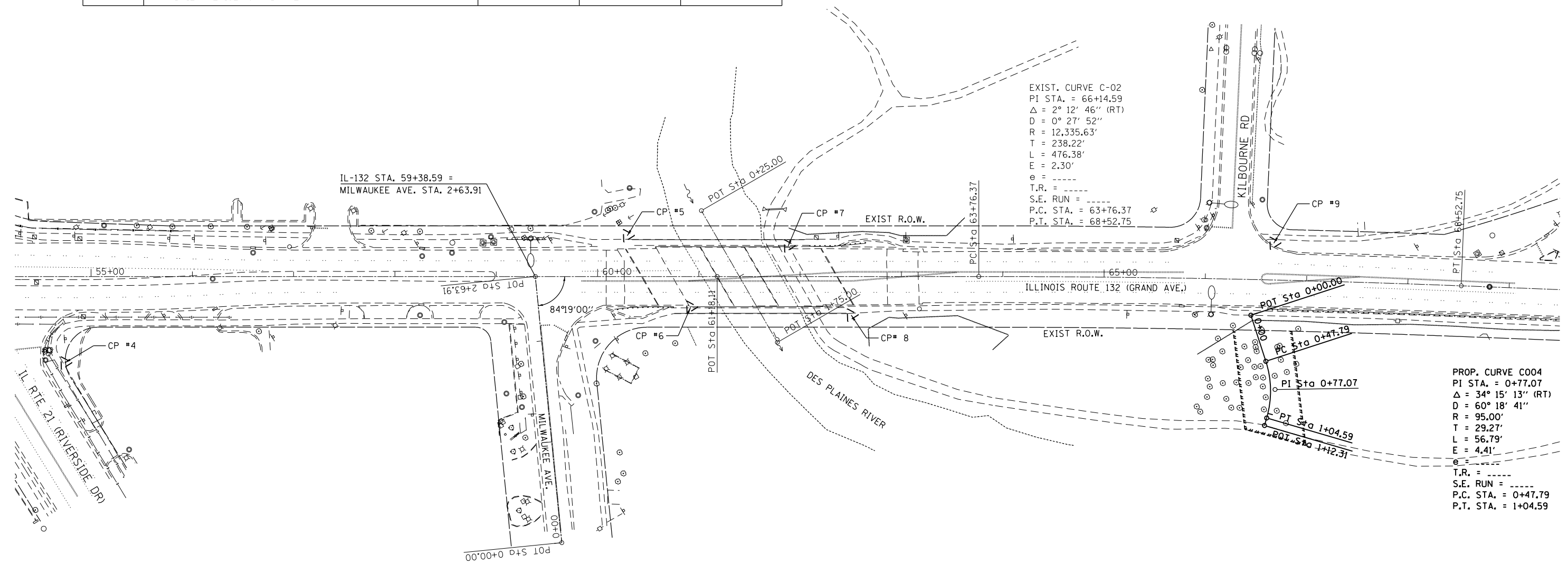
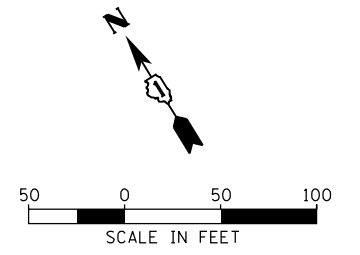


HORIZONTAL CONTROL & SITE BENCHMARKS

NUMBER	DESCRIPTION	NORTHING	EASTING	ELEVATION (FT.)
CP #4	5/8" RB FOUND AT THE SOUTHEAST CORNER OF IL RTE 21 (RIVERDALE DR) AND IL RTE 132 (GRAND AVE)	2078730.246	1094853.705	673.41
CP # 5	SET 5/8" RB AT THE NORTHWEST CORNER OF THE BRIDGE ON IL 132 OVER DES PLAINES RIVER.	2078543.607	1095391.527	667.48
CP #6	CUT CROSS SET ON BARRIER WALL AT THE SOUTHWEST CORNER OF THE BRIDGE ON IL 132 OVER DES PLAINES RIVER	2078450.503	1095407.332	671.05
CP #7	CUT CROSS SET ON BARRIER WALL AT THE NORTHEAST CORNER OF THE BRIDGE OVER DES PLAINES RIVER	2078451.170	1095521.027	671.50
CP #8	SET 5/8" RB AT THE SOUTHEAST CORNER OF THE BRIDGE OVER DES PLAINES RIVER.	2078360.396	1095537.861	667.56
CP #9	SET 5/8" RB AT THE NORTHEAST CORNER OF KILBOURNE RD AND IL RTE 132 (GRAND AVE)	2078200.250	1095929.641	NOT RELIABLE



EXIST. CURVE C-02
 PI STA. = 66+14.59
 $\Delta = 2^\circ 12' 46''$ (RT)
 $D = 0^\circ 27' 52''$
 $R = 12,335.63'$
 $T = 238.22'$
 $L = 476.38'$
 $E = 2.30'$
 $e = \text{---}$
 $T.R. = \text{---}$
 $S.E. RUN = \text{---}$
 $P.C. STA. = 63+76.37$
 $P.T. STA. = 68+52.75$

PROP. CURVE C004
 PI STA. = 0+77.07
 $\Delta = 34^\circ 15' 13''$ (RT)
 $D = 60^\circ 18' 41''$
 $R = 95.00'$
 $T = 29.27'$
 $L = 56.79'$
 $E = 4.41'$
 $e = \text{---}$
 $T.R. = \text{---}$
 $S.E. RUN = \text{---}$
 $P.C. STA. = 0+47.79$
 $P.T. STA. = 1+04.59$

SOURCE BENCHMARK

VILLAGE OF GURNEE BENCH MARK #15
 ON KILBOURNE AT THE MOTHER RUDD HOUSE PARKING LOT.
 CUT SQUARE IN CONC. PAD FOR STREET LIGHT CONTROL BOX.
 PAD IS $\pm 35'$ SELY OF SE CORNER OF RUDD HOUSE.
 ELEVATION: 666.131
 VERTICAL DATUM: NAVD 88

ILLINOIS ROUTE 132 (GRAND AVE.) ALIGNMENT DATA

DESCRIPTION	NORTHING	EASTING	STATION
POINT OF TANGENT	2079539.805	1093713.316	40+78.13
POINT OF TANGENT	2078462.506	1095445.641	61+18.11
POINT OF CURVATURE	2078326.125	1095664.946	63+76.37
POINT OF TANGENT	2078066.803	1096064.527	68+52.75

PROPOSED MULTI-USE PATH CONNECTION ALIGNMENT DATA

DESCRIPTION	NORTHING	EASTING	STATION
POINT OF TANGENT	2078151.860	1095872.886	0+00.00
POINT OF CURVATURE	2078105.465	1095861.418	0+47.79
POINT OF TANGENT	2078057.509	1095832.592	1+04.59
POINT OF TANGENT	2078052.356	1095826.841	1+12.31

M:\IL_132_over_DesPlaines_River\12-154-001\DRAWINGS\CADD_Sheets\1132-shr-ATB.dgn



USER NAME = KyoC	DESIGNED - BCB	REVISED -
PLOT SCALE =	DRAWN - BCB	REVISED -
PLOT DATE = 9/3/2013	CHECKED - DPA	REVISED -
	DATE - 09/03/13	REVISED -

STATE OF ILLINOIS
 DEPARTMENT OF TRANSPORTATION

IL 132 (GRAND AVE.) OVER DES PLAINES RIVER
 ALIGNMENT, TIES AND BENCHMARKS

SCALE: SHEET NO. OF SHEETS STA. TO STA.

F.A.P. RTE. 541	SECTION X-6-B-1-1	COUNTY LAKE	TOTAL SHEETS 93	SHEET NO. 16
CONTRACT NO. 60N22				
ILLINOIS FED. AID PROJECT				