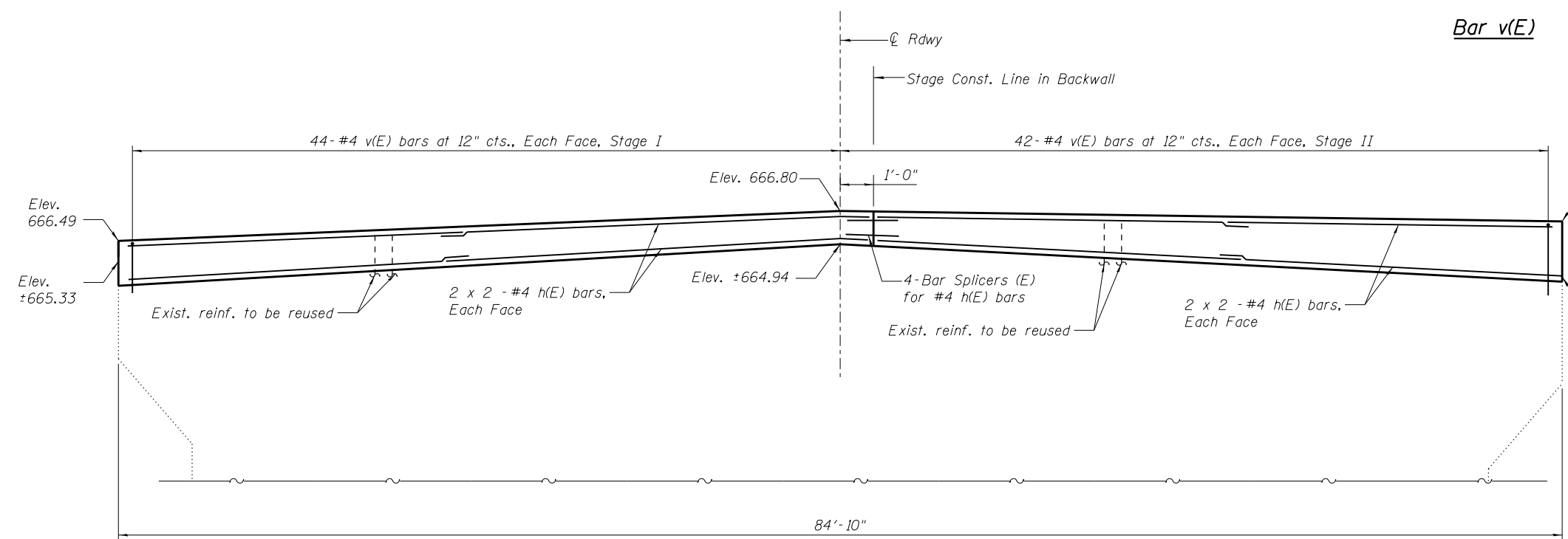
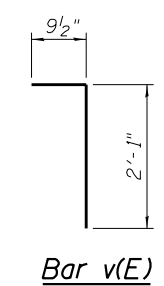
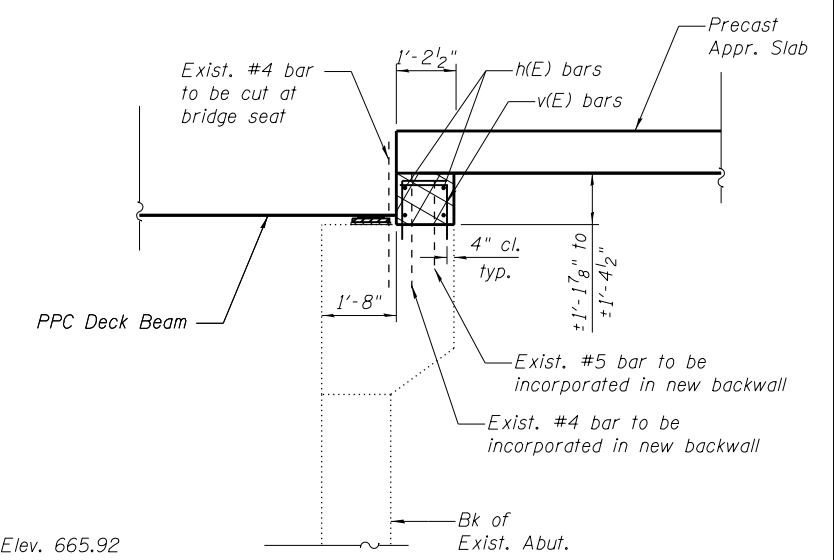
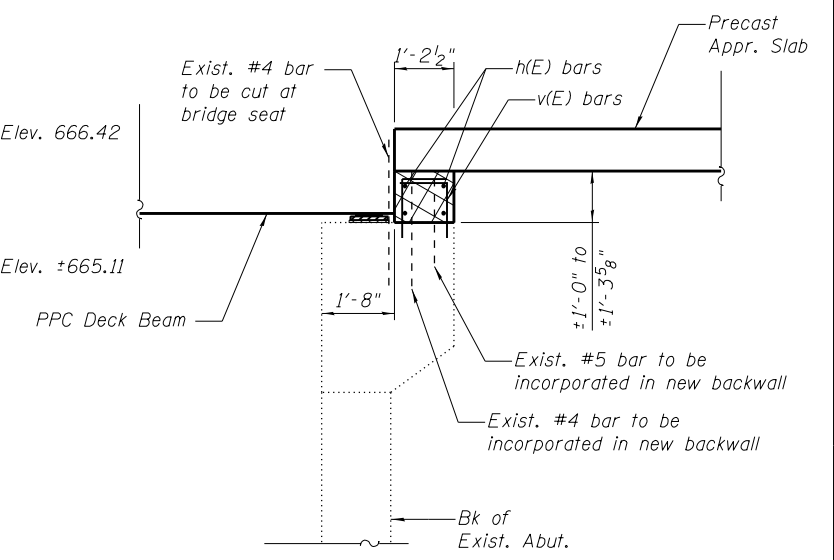


EAST ABUTMENT ELEVATION
(Looking east)



WEST ABUTMENT ELEVATION
(Looking West)



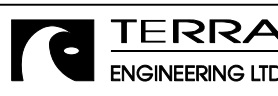
**TWO ABUTMENTS
BILL OF MATERIAL**

Bar	No.	Size	Length	Shape
h(E)	32	#4	22'-7"	—
v(E)	344	#4	2'-10 1/2"	┌
Concrete Structures			Cu. Yd.	10.2
Reinforcement Bars, Epoxy Coated			Pound	1140

Notes:
 shall be poured after PPC Deck beams are in place.
 v(E) bars shall be drilled and grouted into a minimum of 6" of sound concrete in accordance with Section 584 of the Standard Specification. Holes shall be approx. 4" from edge of existing member to avoid existing longitudinal reinf. Cost included in Reinforcement Bars, Epoxy Coated.

At areas of Concrete Removal, the existing reinforcement extending into the areas of new construction shall be cleaned, straightened and incorporated into the new construction. Included in cost of Concrete Removal.

M:\JL 132 over- Des\James River\12-15-00\1\DRAWINGS\Structural\Final Plans\CADD Sheets\049-0062.20-abutments.dgn



USER NAME = JPS	DESIGNED - OY	REVISED
FILE NAME = 049-0062.20-abutments.dgn	CHECKED - DB	REVISED
PLOT DATE = 9/3/2013	DRAWN - CM	REVISED
	CHECKED - OY	REVISED

**STATE OF ILLINOIS
DEPARTMENT OF TRANSPORTATION**

**ABUTMENTS
STRUCTURE NO. 049-0062**
SHEET NO. S20 OF S23 SHEETS

F.A.P. RTE.	SECTION	COUNTY	TOTAL SHEETS	SHEET NO.
541	X-6B-R	LAKE	93	61
ILLINOIS FED. AID PROJECT			CONTRACT NO. 60N22	