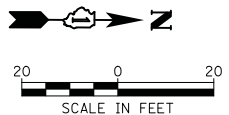
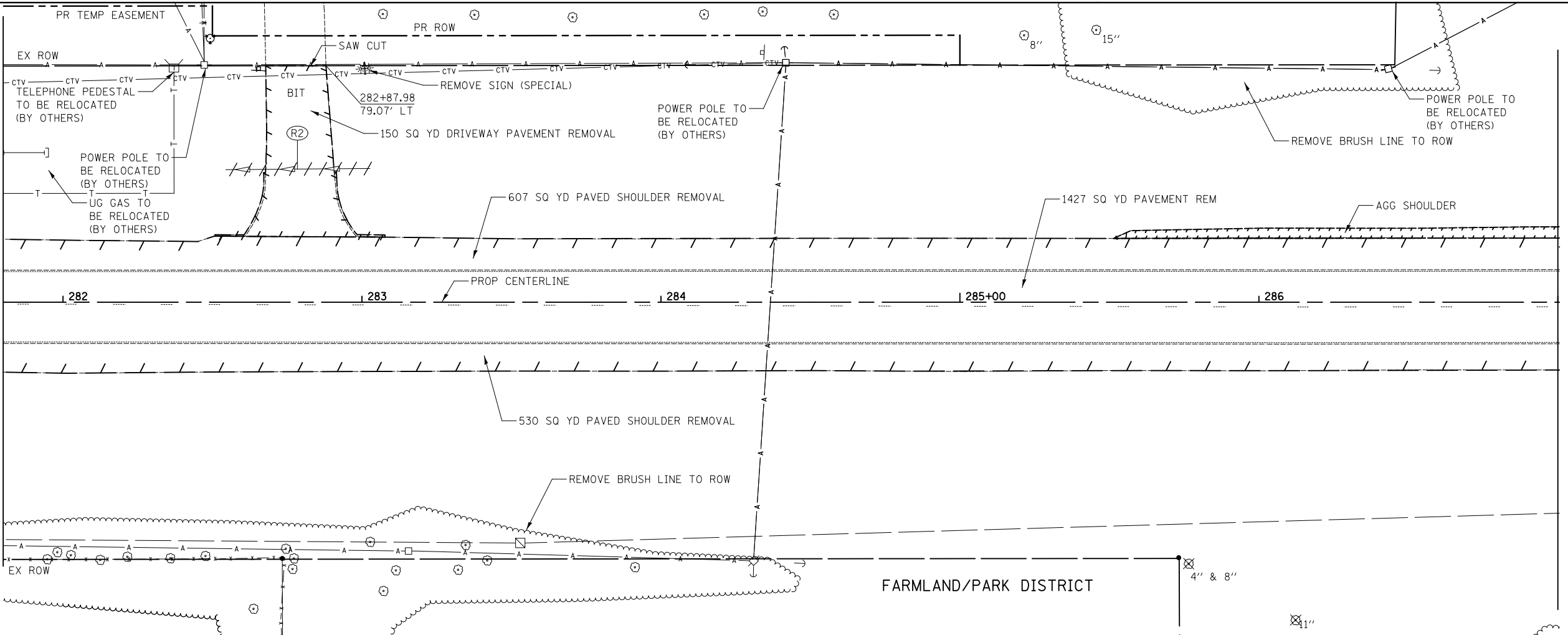


PLAN	SURVEYED	DATE
	PLOTTED	BY
	CHECKED	
	NOTED	
	FILE NAME	
	NO.	

PROFILE	SURVEYED	DATE
	GRADES CHECKED	BY
	STRUCTURE	
	NOTATIONS	
	NO.	

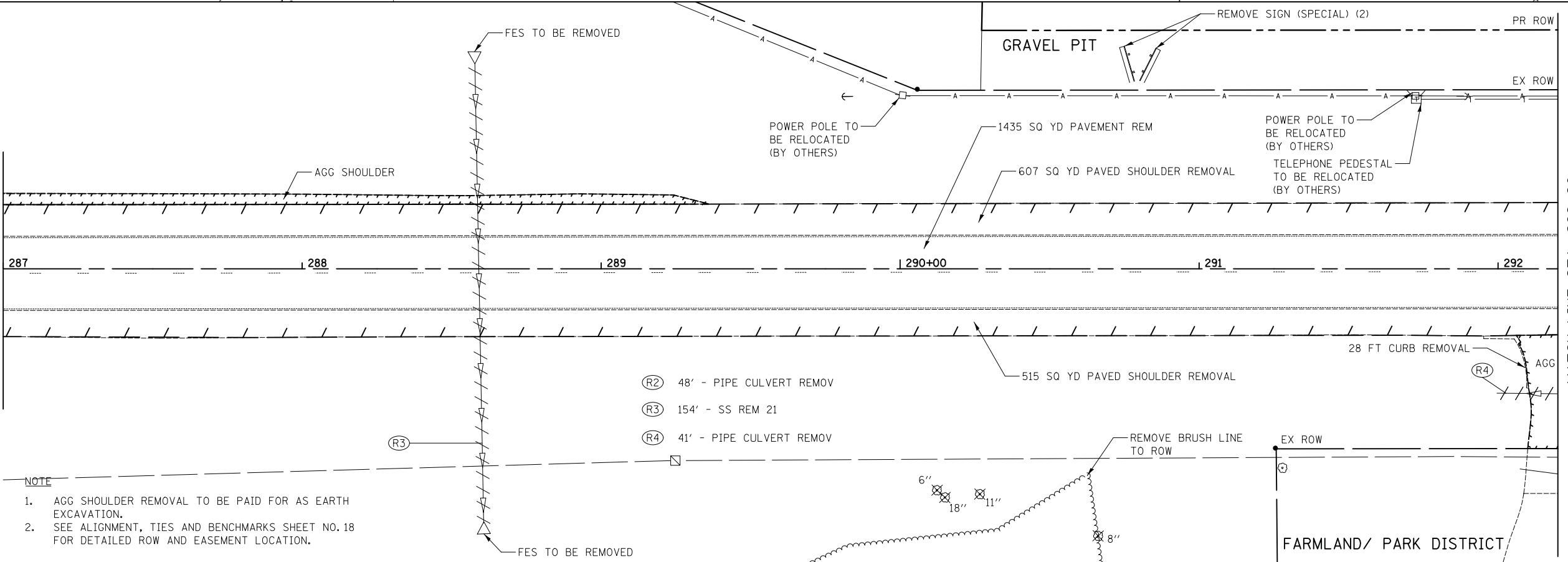
MATCH LINE STA. 281+80
SEE SHEET NO. 33

MATCH LINE STA. 287+00



MATCH LINE STA. 287+00

MATCH LINE STA. 292+20
SEE SHEET NO. 35



NOTE

1. AGG SHOULDER REMOVAL TO BE PAID FOR AS EARTH EXCAVATION.
2. SEE ALIGNMENT, TIES AND BENCHMARKS SHEET NO. 18 FOR DETAILED ROW AND EASEMENT LOCATION.

- (R2) 48' - PIPE CULVERT REMOV
- (R3) 154' - SS REM 21
- (R4) 41' - PIPE CULVERT REMOV

FILE NAME	USER NAME = kwh	DESIGNED - DTE	REVISED -
...\\07-Removals\2278NG_REM_02.dgn		DRAWN - DTE	REVISED -
		CHECKED - GAB	REVISED -
		DATE - 12/17/2013	REVISED -

**STATE OF ILLINOIS
DEPARTMENT OF TRANSPORTATION**

REMOVAL PLAN	
SCALE: 1" = 20'	SHEET NO. 2 OF 5 SHEETS
STA. 281+80	TO STA. 292+20

F.A.U. RTE.	SECTION	COUNTY	TOTAL SHEETS	SHEET NO.
3887	18W&RS-5 (12)	McHENRY	151	34
CONTRACT NO. 60V72				
FED. ROAD DIST. NO. 1 ILLINOIS FED. AID PROJECT				