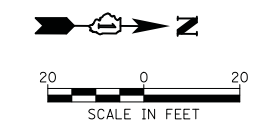


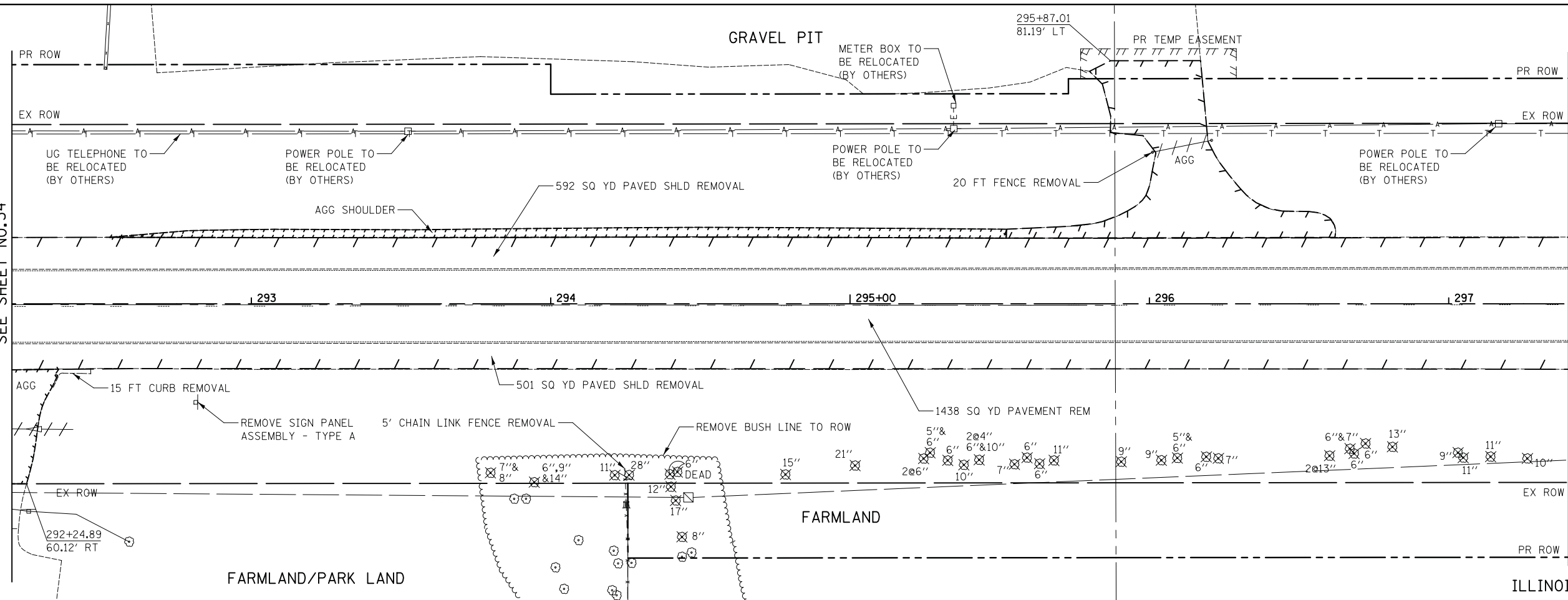
PLAN	SURVEYED	BY	DATE
	PLOTTED		
	GRADES CHECKED		
	STRUCTURE NOTATIONS CHECKED		
	NOTE BOOK NO.		
	CADD FILE NAME		

PROFILE	SURVEYED	BY	DATE
	PLOTTED		
	GRADES CHECKED		
	STRUCTURE NOTATIONS CHECKED		
	NOTE BOOK NO.		
	CADD FILE NAME		



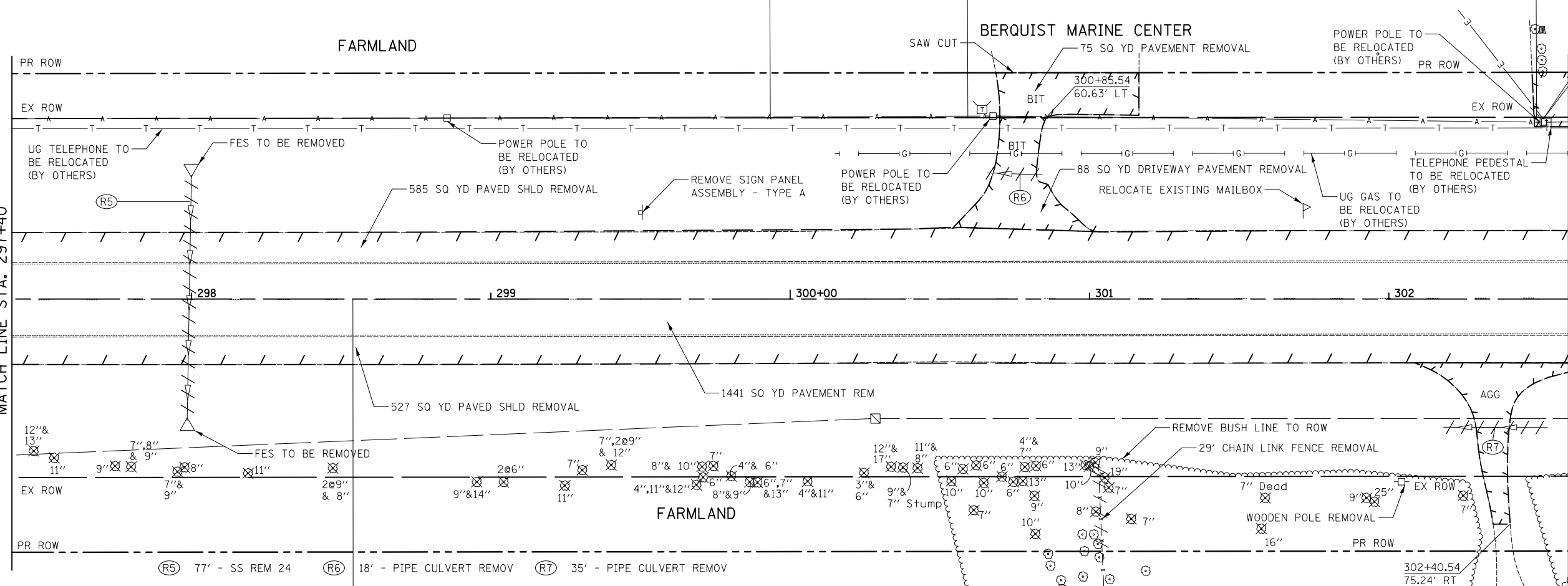
MATCH LINE STA. 292+20  
SEE SHEET NO. 34

MATCH LINE STA. 297+40



MATCH LINE STA. 297+40

MATCH LINE STA. 302+60  
SEE SHEET NO. 36



- NOTE
1. AGG SHOULDER REMOVAL TO BE PAID FOR AS EARTH EXCAVATION.
  2. SEE ALIGNMENT, TIES AND BENCHMARKS SHEET NO. 18 FOR DETAILED ROW AND EASEMENT LOCATION.

FILE NAME	USER NAME = kwh	DESIGNED - DTE	REVISED -
...\\07-Removals\2278NG_REM_03.dgn		DRAWN - DTE	REVISED -
		CHECKED - GAB	REVISED -
		DATE - 06/24/2013	REVISED -

**STATE OF ILLINOIS  
DEPARTMENT OF TRANSPORTATION**

<b>REMOVAL PLAN</b>	
SCALE: 1" = 20'	SHEET NO. 3 OF 5 SHEETS
STA. 292+20	TO STA. 302+60

F.A.U. RTE.	SECTION	COUNTY	TOTAL SHEETS	SHEET NO.
3887	18W&RS-5 (12)	MCHEMERY	151	35
CONTRACT NO. 60V72				
FED. ROAD DIST. NO. 1 ILLINOIS FED. AID PROJECT				